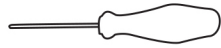




## REQUIRED TOOLS:



10mm (7/16")  
Wrench or  
Socket Wrench



Phillips Screwdriver

### STEP 1

Remove your old machine heads, any screws, and bushings

### STEP 2

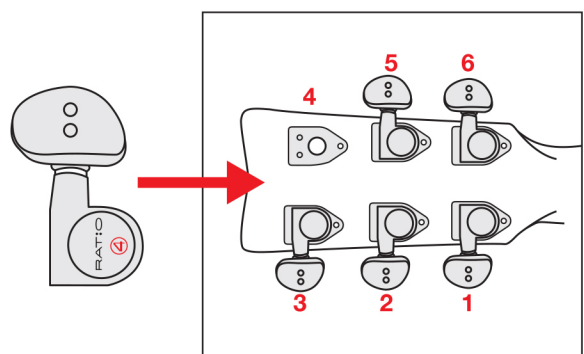
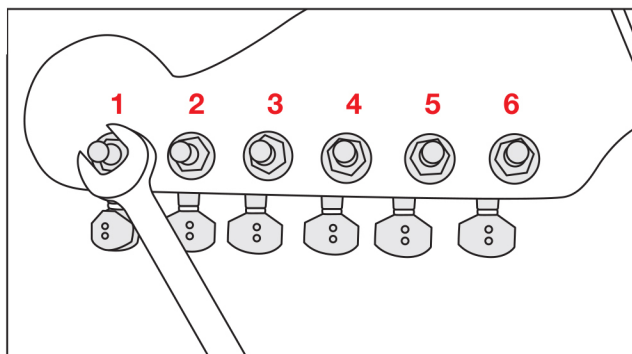
Use the aluminum InvisoMatch mounting plates included in your kit, that correspond to your old machine head screw pattern. Chrome, Gold, etc premium plates are available for purchase from Graph Tech. (if none match, proceed to "Alternate Method")

### STEP 3

Screw down matching Invisomatch plates using pre-existing screw hole(s)

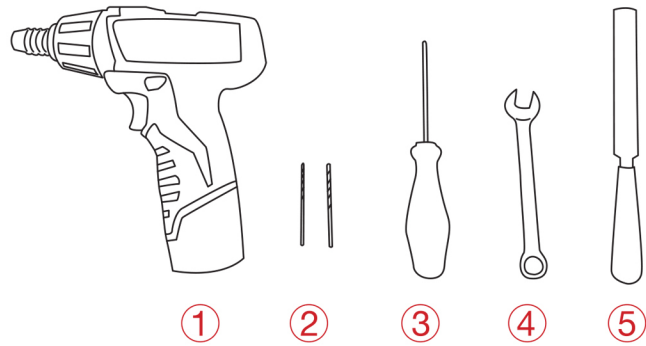
### IMPORTANT

- Ratio machine heads need to be installed to the matching string position. Each machine head is numbered 1 to 6
- Tighten all nuts using 10mm (7/16") wrench.
- Tighten bushings so they are snug, do not overtighten.
- Place washer so the center is in the high point.



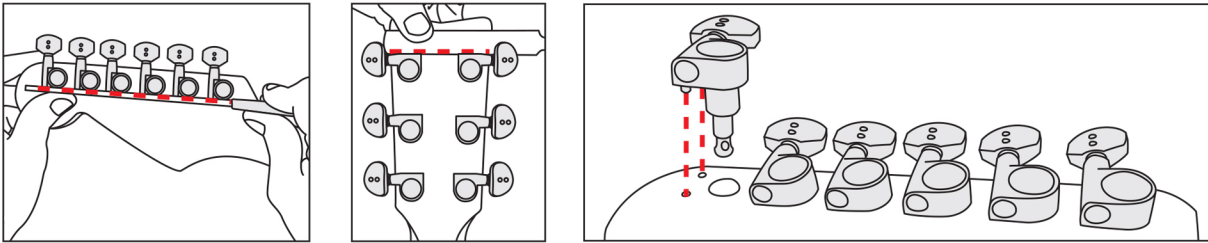
# INSTALLATION: Alternate Method

- ① Drill
- ② Drill bits: 1/16" (1.6mm / #52) and 7/64" (2.5mm / #40)
- ③ Phillips Screwdriver (required only for screw mount machine heads)
- ④ 10mm (7/16") Wrench or Socket Wrench
- ⑤ Straight edge



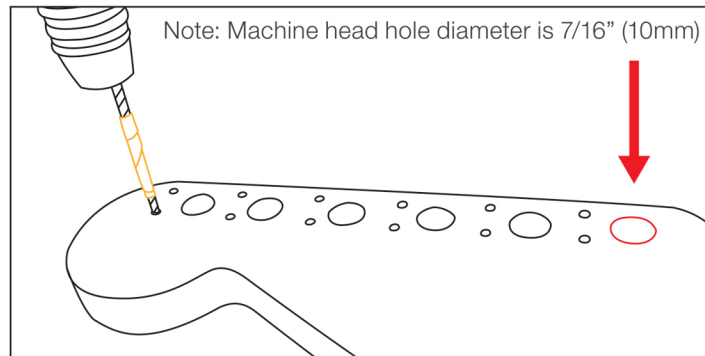
## STEP 1 Mark Alignment Holes

- Use one of the invisomatch mounting plates provided as a template to mark the position of the two pin holes you will need to drill (use a straight edge if necessary)
- Use a fine tip marker or center punch to mark the 2 pin hole locations"



## STEP 2 Drill Alignment Holes

- Using a 1/16" (1.6mm / #52) drill bit, drill pilot holes to a depth of 1/8" (3mm). Use masking tape to mark drill bit for your drilling depth
- Using a 7/64" (2.5mm / #40) drill bit, drill alignment holes to same depth.
- Test machine head to ensure fit.
- Repeat for all machine heads.



## STEP 3 Install Machine Heads

- Install Ratio machine heads in the correct order (refer to red numbers in images) using the supplied washer and bushing.
- Tighten all nuts using 10mm (7/16") wrench.
- Tighten bushings so they are snug, do not overtighten.
- Place washer so the center is in the high point.

