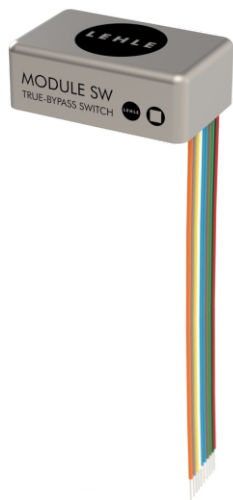




LEHLE MODULE SW

COMPACT EFFECTS LOOP TRUE BYPASS SWITCHING UNIT



LEHLE MODULE SW-L



LEHLE MODULE SW-OFL



LEHLE MODULE SW-OF

- Equipped with a gold-plated contact relay for lossless signal routing
- Active pop suppression circuit
- Can be used as AB switch
- Three different operating modes: Latching, Momentary or Mixed Mode
- Fits perfectly to the LEHLE SWITCH BTN

The LEHLE MODULE SW is a true bypass switching unit with relay and an active pop suppression function controlled by an intelligent microcontroller circuit. Thereby allowing the LEHLE MODULE SW to switch even faster than mechanical switches, noise-free and without wear. In combination with the LEHLE SWITCH BTN it is the perfect replacement for the standard 3PDT latching switch, which can be unreliable and noisy.

The size of the module is smaller than a 9-volt battery - so if it's used as true bypass unit, it can be easily placed in the battery compartment of an effects pedal. The LEHLE MODULE SW can also be used to switch between two instruments with one amp, or vice versa, between two amps with one instrument.

The three operating modes make the LEHLE MODULE SW work as either a latching or momentary switch, allowing for short or rhythmic stutter-effects. The third mode combines a mixture of operating mode one and two: a short press engages the latching function and a long press is momentary. Enjoy your next step - with the LEHLE MODULE SW.



LEHLE MODULE SW

TECHNICAL SPECIFICATIONS

Module type	SW-L	SW-OFL	SW-OF
Weight	34 g [1.2 oz]	8 g [0.3 oz]	6 g [0.2 oz]
Length	40 mm [1.6"]	38.5 mm [1.5"]	38.5 mm [1.5"]
Width	25 mm [0.98"]	23.6 mm [0.93"]	23.6 mm [0.93"]
Overall height w/o cables	14 mm [0.55"]	11 mm [0.43"]	11 mm [0.43"]
Cable length	100 mm [3.94"]	100 mm [3.94"]	-
Cable material	AWG26 7/34 halogen-free leads w tinned endings		-
Supply voltage	9 V	9 V	9 V
Current consumption OFF	7 mA	7 mA	7 mA
Current consumption ON w/o LED	21 mA	21 mA	21 mA
Series resistor LED	82 Ohm	82 Ohm	82 Ohm
Max level	12 dBu	12 dBu	12 dBu
Compliance	RoHS II according to Directive 2011/65/EU		

ORDERING INFORMATION

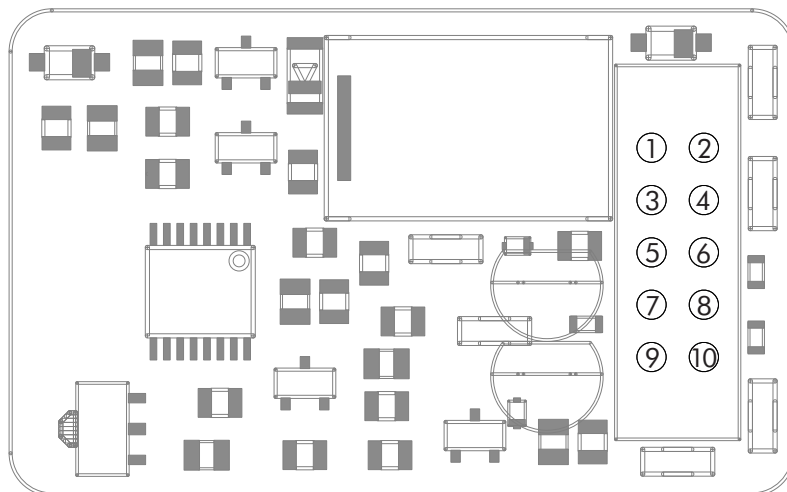
Module type	SW-L	SW-OFL	SW-OF
Order code (for a single unit)	6000	6001	6002
EAN13 Barcode (for a single unit)	4260142210576	4260142210583	4260142210590



LEHLE MODULE SW

CABLE AND PIN ASSIGNMENT

Module type	SW-L	SW-OFL	SW-OF
Power supply +9 V		red lead	Pin 1
Ground		black lead	Pin 2
LED (+) Anode		green lead	Pin 3
LED (-) Cathode		brown lead	Pin 4
Switch pin 1		blue lead	Pin 5
Switch pin 2		blue lead	Pin 6
Input		white lead	Pin 7
Send		yellow lead	Pin 8
Return		grey lead	Pin 9
Output		orange lead	Pin 10





LEHLE MODULE SW

SELECTING THE SWITCH MODE

You can change the behaviour of the connected switch (blue leads, pin 5 & 6), so it works latching, momentary or in a mixed mode. According to the switch mode following configurations are given:

- Latching Mode:

The connected switch "latches" by a press and release.

- Momentary Mode:

The connected switch triggers a contact and disconnects once released.

- Mixed Mode:

A mix between latching and momentary. A short press lets the connected switch act as latching, a longer press is momentary.

To change the mode please proceed as follows:

1. Disconnect the power supply.
2. Press and hold the foot switch.
3. Reconnect the power.
4. The LED starts flashing in following order:
 - for Latching Mode
 - for Momentary Mode
 - for Mixed Mode
5. If you release the foot switch after the first flash, the Latching Mode is selected. After 2x flashes you're in the Momentary Mode and after 3x it's the Mixed Mode.
6. The LEHLE MODULE SW turns off and reboots.

The selection of the switch mode is stored in the flash memory of the microcontroller and recalled every time the module is powered on.

Specifications and products listed herein are subject to change without notice.