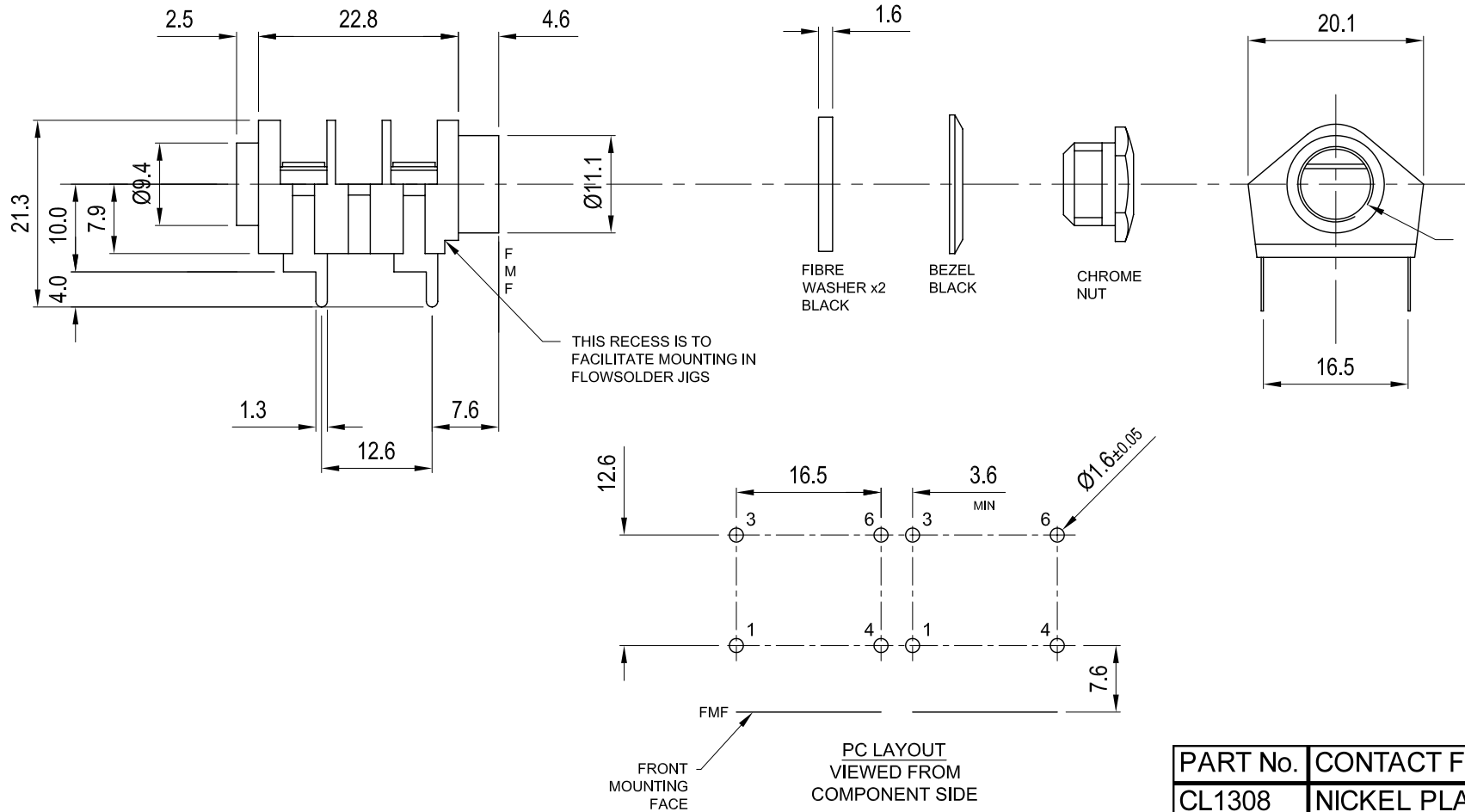
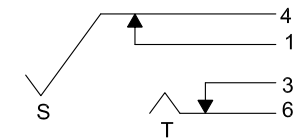


ISS.	AMEND	DATE
1	ISSUED	26/04/2012
2	VARIANTS TABLE ADD	06/06/2012

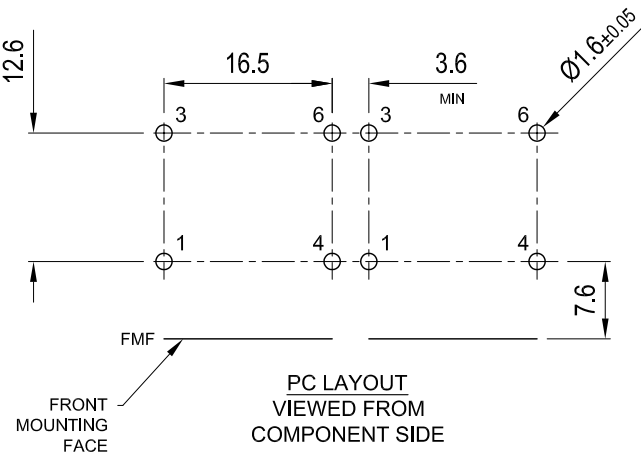


INTERNAL THREAD
3/8" BSF x 20 TPI

SCHEMATIC



SWITCH CONTACTS OPEN
WHEN PLUG IS INSERTED,
CLOSE WHEN PLUG IS
WITHDRAWN.



NOTES:-

1. MAXIMUM PANEL THICKNESS 4.3mm.
2. SUPPLIED WITH NUT, BEZEL & WASHERS UNASSEMBLED.
3. CL1308T JACK HAS ALL CONTACTS PLATED WITH A LOW LOSS FINISH.

PART No.	CONTACT FINISH
CL1308	NICKEL PLATED
CL1308G	GOLD PLATED
CL1308T	TIN PLATED

RoHS
COMPLIANT

TOLERANCE
NO DEC. PLACE ±
1 DEC. PLACE ±
2 DEC. PLACE ±
HOLE Ø ±
ANGLES ±
UNLESS
OTHERWISE STATED

1ST DRAWN : 11/01/1991

3rd ANGLE PROJECTION:

DO NOT SCALE

Cliff Electronic Components Ltd.

76 Holmethorpe Avenue, Holmethorpe Industrial Estate,
Redhill, Surrey, RH1 2PF, England, UK

Tel: 01737-771375 Fax: 01737-766012 Website: www.cliffuk.co.uk

THE CONTENTS OF THIS DOCUMENT MUST NOT BE COPIED OR DISCLOSED
TO A 3rd PARTY WITHOUT WRITTEN PERMISSION OF CLIFF UK. © 1991

DIMENSIONS IN MILLIMETERS UNLESS OTHERWISE STATED. WORK TO DIMENSIONS. REMOVE ALL BURRS. IF IN DOUBT ASK.

MATERIAL: NYLON / NiAg / FIBRE

FINISH: AS MOULDED / SEE TABLE

DRAWN: NJB

APPROVED: RWT

TITLE: S4/BNB/PCA JACK SOCKET

DRWG. No. **CL 1308**

FORM: A4DRWGH