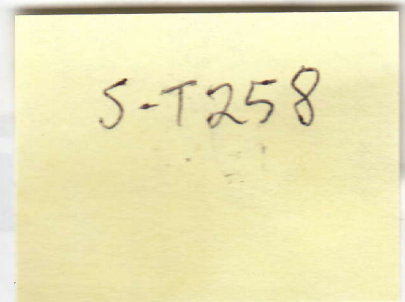


# ELECTRONIC DIGITAL CALIPER

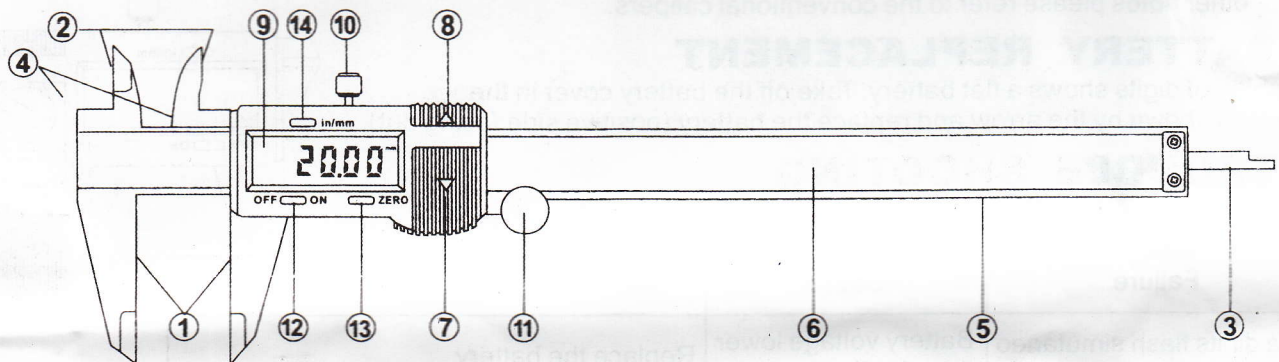
## ● TECHNICAL SPECIFICATIONS

Measuring range:	0-150mm/0-6in,0-200mm/0-8in,0-300mm/0-12in.
Resolution:	0.01mm/0.0005in.
Accuracy:	±0.02mm/0.001in (<100mm). ±0.03mm/0.001in (>100-200mm). ±0.04mm/0.0015in(< 200-300mm).
Repeatability:	0.01mm/0.0005in.
Max measuring speed:	1.5m/sec, 60in/sec.
Measuring system:	Linear capacitive measuring system.
Display:	LCD display.
Power:	One silver oxide battery 1.55V , type SR44. capacity: 180mAh.
Working temperature:	5°C-40°C/41 to 104 degree F.
Influence of humidity:	Not important under 80% of relative humidity.



## ● NOMENCLATURE

- |  |                               |
|--|-------------------------------|
| 1. Outside measuring faces               | 2. Inside measuring faces     |
| 3. Depth measuring blade                 | 4. Step measuring faces       |
| 5. Beam                                  | 6. Main scale                 |
| 7. Battery compartment lid               | 8. Output connector           |
| 9. Display(LCD)                          | 10. Slider clamp screw        |
| 11. Thumb roller(depending on the model) | 12. Power ON/OFF switch       |
| 13. ZERO switch                          | 14. Inch/mm conversion switch |



## ● APPLICATIONS

### 1. PREPARATIONS:

- (1).Slider can be removed only after the locking screw (No.10 item of the Nomenclature) is loosened.
- (2).Wipe clean all the measuring faces and caliper ber. No organic solutions are allowed.
- (3).Check to see if all the buttons, switches, and LCD display respond well.

### 2. BASIC MEASURING METHODS:

- (1).Loosen the locking screw.
- (2).Switch the unit on with a press on "ON" button. Then select the unit system needed by pressing Inch/Metric