



TAD – 12AU7A/ECC82 High Performance Medium-Mu Twin Triode

The TAD™ 12AU7A/ECC82 Premium Selected in its latest revision with pleasing sonical performance and rich tone.

This TAD™ 12AU7A/ECC82 has strong systems which are selected to provide two symmetric triodes as for stereo applications or ideal balanced driver stage; perfect choice for HiFi stereo applications and as driver stage.

The TAD™ 12AU7A/ECC82 is a direct replacement for also E82CC, ECC802, 6N10, 6189W, 5814A and others.

Characteristics of a bogey tube:

Electrical		
Heater:	Series	Parallel
Voltage (AC or DC)	12.6V +/-1.0	6.3+/-0.5
Current	0.15	0.3
Heating		Indirect
Cathode-to-heater potential, max.		180 V
Direct interelectrode capacitances, max.***		
Grid to plate		1.4 pF
Grid to cathode		1.8 pF
Grid to heater		0.2 pF
Plate to cathode		0.3 pF
Mechanical		
Operating Position		Any
Base	E9-1, Small Buton 9 Pin	
Dimensions:		
Height		57 mm
Seated height		50 mm
Diameter		22.7 mm
Cooling		conventional
Approximate net weight		13 g

***Without external shielding, nominal values

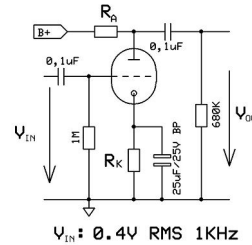
AF Power Amplifier

Maximum ratings	
DC plate voltage	330 V
Positive DC Grid Voltage	0 V
Negative DC Grid Voltage	-100 V
Cathode Current	20 mA
Plate dissipation	2.75 W
Bulb temperature (surface hottest point)	200°C

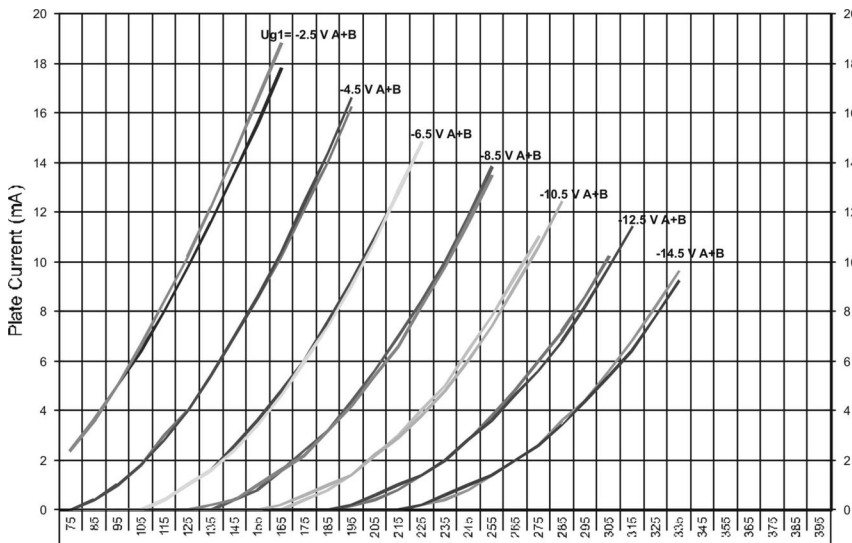
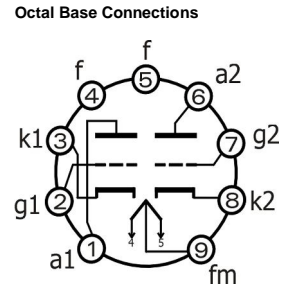
RT005, 12AU7A/ECC82

B+ / V	R _A / kΩ	R _K / kΩ	V _{Out} / V _{RMS}	V _{Out} / V _{IN}	THD / %	I _A / mA
200	47	1,20	6,5	16,3	0,6	2,3
250	47	1,20	6,6	16,5	0,5	3,0
300	47	1,20	6,6	16,5	0,4	3,6
350	47	1,20	6,7	16,8	0,3	4,3
400	47	1,20	6,8	17,0	0,3	5,0
200	100	2,20	6,6	16,5	0,7	1,2
250	100	2,20	6,7	16,8	0,6	1,6
300	100	2,20	6,8	17,0	0,5	1,9
350	100	2,20	6,8	17,0	0,4	2,2
400	100	2,20	6,9	17,3	0,3	2,5
200	220	3,90	6,5	16,3	0,7	0,6
250	220	3,90	6,6	16,5	0,6	0,8
300	220	3,90	6,7	16,8	0,5	1,0
350	220	3,90	6,8	17,0	0,4	1,1
400	220	3,90	6,8	17,0	0,4	1,3

Test arrangement:



Bottom View



Outline View

