



# Technical Information Clorox Healthcare® Bleach Germicidal Cleaner



PRODUCTS  
& SAFETY

## OVERVIEW

Clorox Healthcare® Bleach Germicidal Cleaner is engineered as a ready-to-use sporicidal cleaner-disinfectant system for healthcare facilities.

This EPA-registered disinfectant contains sodium hypochlorite and other ingredients to kill *C. difficile* spores and other healthcare-relevant pathogens in 3 minutes or less on a variety of hard, nonporous healthcare surfaces.

### INGREDIENT INFORMATION

Active ingredient: sodium hypochlorite.....0.65%\*  
 Other ingredients:.....99.35%  
 Total:.....100%  
 \*0.62% (6175 ppm) available chlorine

## AVAILABLE FORMATS

Clorox Healthcare® Bleach Germicidal Cleaner is available in multiple sizes and formats to accomplish different disinfecting jobs.

At a Glance Clorox Healthcare® Bleach Germicidal Cleaner	
EPA Registration Number	56392-7
Product Classification	Trigger spray
Dilution	Ready-to-use
Disinfectant Type	1-step cleaner-disinfectant
Active Ingredient Chemistry	Sodium Hypochlorite (Bleach) (1:10 dilution of bleach) 0.65% (6500 ppm)
Odor	fruity, floral, bleach
Shelf Life	Expiration date listed on each package: month, day, year
Toxicity Signal Word	Caution
HMIS Rating	1-0-1-A
PPE Required	Follow your facility's protocols

	Designed for	Item #	Quantity	Shelf Life
<b>Trigger Sprays</b> 	<b>Convenient application</b> Enable quick and easy surface coverage	68967	22 oz. spray, 8/case	18 months
		68970	32 oz. spray, 6/case	18 months
<b>Pull-tops</b> 	<b>Minimizing Aerosolization</b> Leverage for larger surfaces or areas where sprays are not preferred	68832	32 oz. pull-top, 6/case	18 months
<b>Refills</b> 	<b>Easy refilling</b> Minimize packaging waste and meet the needs of heavy users.	68973	64 oz. refill, 6/case	18 months
		68978	128 oz. refill, 4/case	18 months



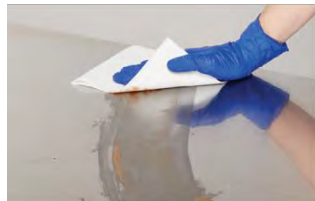
# Technical Information Clorox Healthcare® Bleach Germicidal Cleaner



PRODUCTS  
& SAFETY

## DISINFECTION DIRECTIONS FOR USE#

### TRIGGER SPRAY



**1.** Don PPE, then REMOVE gross soil if visible. When disinfecting surfaces contaminated with *C. difficile* spores, always clean surface prior to disinfecting.\*



**2.** SPRAY 6"-8" from surface until surface is thoroughly wet.



**3.** To DISINFECT, surface should remain wet for 1 MINUTE. To kill *C. difficile* spores, surface should remain wet for 3 MINUTES.



**4.** WIPE surface with a clean, damp cloth to prevent residue buildup.

#### Special Instructions for Cleaning Prior to Disinfection Against *Clostridium difficile* spores:

- **Personal Protection:** Wear appropriate barrier protection such as gloves, gowns, masks and eye covering.
- **Cleaning Procedure:** Fecal matter/waste must be thoroughly cleaned from surfaces/objects before disinfection by application with this product. Cleaning is to include vigorous wiping and/or scrubbing, until all visible soil is removed. Special attention is needed for high-touch surfaces. Surfaces in patient rooms are to be cleaned in an appropriate manner, such as from right to left or left to right on horizontal surfaces, and top to bottom on vertical surfaces to minimize spreading of the spores. Restrooms are to be cleaned last. Do not reuse soiled cloths.
- **Infectious Materials Disposal:** Materials used in the cleaning process that may contain feces/waste are to be disposed of immediately in accordance with local regulations for infectious materials disposal.
- **Disinfection Procedure:** Spray 6"-8" from surface until surface is completely wet. Let stand for 3 minutes. Wipe with a clean, damp cloth or paper towel or allow to air dry.

#### Special Instructions for Cleaning and Decontamination Against HIV-1 (AIDS Virus), HBV and HCV on surfaces/Objects Soiled with Blood/Body Fluids.

- **Personal Protection:** When handling items soiled with blood or body fluids, use disposable gloves, gowns, masks, and eye coverings.
- **Cleaning Procedure:** Blood and other body fluids must be thoroughly cleaned from surfaces and objects before applying this product.
- **Contact Time:** Let stand for 1 minute. For all other organisms, see directions for contact times.
- **Disposal of Infectious Materials:** Use disposable impervious gloves, gowns, masks and eye coverings. Blood and other body fluids must be autoclaved and disposed of according to local regulations for infectious waste disposal.

This product is not to be used as a terminal sterilant/high-level disinfectant on any surface or instrument that **(1)** is introduced directly into the human body, either into or in contact with the bloodstream or normally sterile areas of the body, or **(2)** contacts intact mucous membranes but which does not ordinarily penetrate the blood barrier or otherwise enter normally sterile areas of the body. This product may be used to preclean or decontaminate critical or semi-critical medical devices prior to sterilization or high-level disinfection.

# See product label for complete instructions. This is a one-step product. Precleaning is required only if blood, vomit, fecal matter or other soil is visible, or in advance of disinfecting *C. difficile* spores.