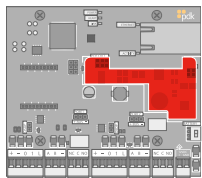
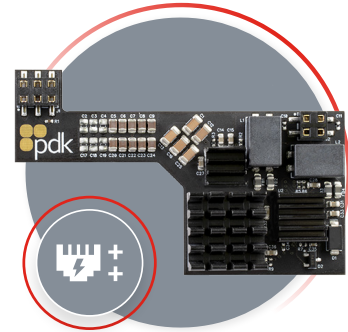


Red Module Kits

Every Red controller and expansion board features a built-in network input. When a cat5 or cat6 is plugged in, the controller will automatically be discovered and communicate with any other controller on the network. In addition, Red boards are built to be modular. Meaning you can choose alternative methods of communication from controller to controller using pdk's plug and play module kits.



Model

PoE++ Module | PN: RMPOE

PoE++ Module Kit

Plug-and-play connection options are available with our Red™ PoE++ Kit making installations faster and easier than ever before. Each module plugs seamlessly into the door controller and is instantly ready to go. With PoE, you automatically save on cable runs and can fully power up to 4 doors, making pdk controllers the most flexible and intuitive controllers on the market today!

	PoE Switch Requirements		
Product	PoE Switch	PoE + Switch	PoE ++ Switch
Red 1	11w/0.8a	24w/1.7a	27w/2a
Red 2	11w/0.8a	24w/1.7a	27w/2a
Red 4	11w/0.8a	24w/1.7a	49w/3.5a
Aux 8	11w/0.8a	24w/1.7a	49w/3.5a

	PoE Module Specifications
Communication	Ethernet
Enviromental	Temperature: -4° ~ +140° F / -20° ~ +60° C
	Humidity: 0 - 95% relative humidity non condensing

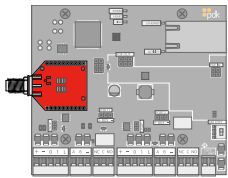
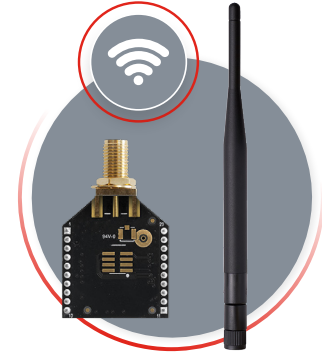
Manufacturer's Limited Warranty

One to five-year warranty against defects in materials and workmanship. For full details, visit www.prodatakey.com/warranty.

Visit www.prodatakey.com or prodatakey.zendesk.com to access marketing, installation, and support resources. For questions about pdk Red Module Kits, please contact support@prodatakey.com.

Red Module Kits

Every Red controller and expansion board features a built-in network input. When a cat5 or cat6 is plugged in, the controller will automatically be discovered and communicate with any other controller on the network. In addition, Red boards are built to be modular. Meaning you can choose alternative methods of communication from controller to controller using pdk's plug and play module kits.



Model

WiMAC Wireless Module | PN: RMW

WiMAC Module Kit

Plug-and-play connection options are available with our Red™ PoE++ Kit making installations faster and easier than ever before. Each module plugs seamlessly into the door controller and is instantly ready to go. To enable wireless communication over WiMAC wireless, simply add the wireless module kit to any Red board. Once plugged in, the controller will automatically know to communicate with other controllers over WiMAC wireless.

WiMAC Module Specifications	
Communication	WiMAC Wireless Mesh (2.4 GHz / 802.15.4)
	Wireless Range: 1 Mile Line-of-Sight, 450 ft. indoor average
	AES 128-bit encryption
Enviromental	Temperature: -4° ~ +140° F / -20° ~ +60° C
	Humidity: 0 - 95% relative humidity non condensing



plug'n'play**connectivity**



self**discoverable**



supervised**connectivity**

Manufacturer's Limited Warranty

One to five-year warranty against defects in materials and workmanship. For full details, visit www.prodatakey.com/warranty.

Visit www.prodatakey.com or prodatakey.zendesk.com to access marketing, installation, and support resources. For questions about pdk Red Module Kits, please contact support@prodatakey.com.