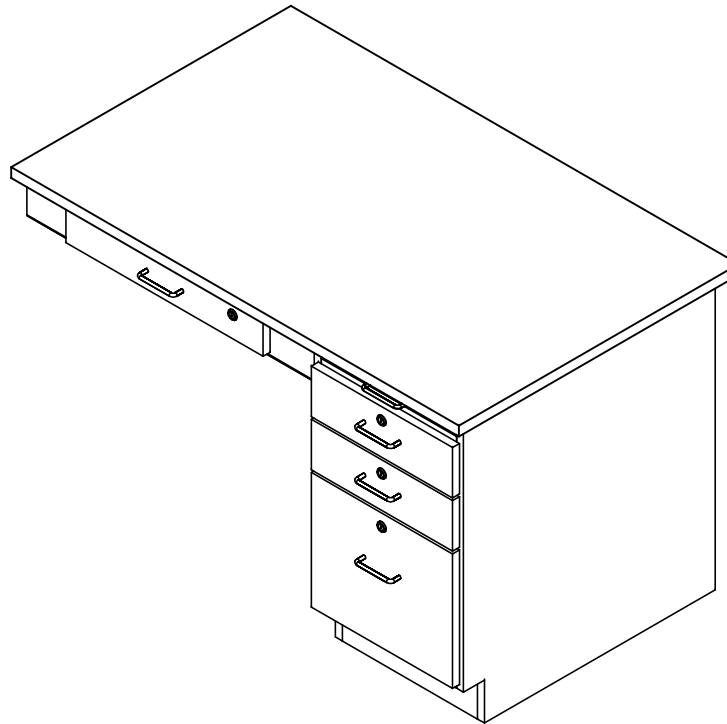


SIDE DESK

1144K & 1146K

ASSEMBLY INSTRUCTIONS



NOTE:

1. MODEL VIEWS MAY NOT REPRESENT EXACT MODEL PURCHASED

DWN BY:	EMK	DWN DATE:	11/9/16
APR BY:		DATE APR:	
APR BY:		DATE APR:	

UNLESS OTHERWISE SPECIFIED
DIMENSION ARE IN INCHES

CABINET SQUARENESS ± .0625
FRACTIONAL VALUES ± 1/32"
- ALL VALUES ± OVERALL -



300 South Krueger Street
Suring, WI 54174
diversifiedwoodcrafts.com

TITLE:
**SIDE DESK
ASSEMBLY INSTRUCTIONS**

REV.	DESCRIPTION	DATE	NAME	ECN NO.
A	CREATED DRAWING	11/9/16	EMK	-
REVISION LEVEL				

THIS DRAWING IS THE SOLE PROPERTY OF
DIVERSIFIED WOOD CRAFTS. IT MAY NOT
BE ALTERED OR CHANGED WITHOUT
PERMISSION

DRAWING NUMBER:	SCALE:	SHEET:	REVISION:
1144K & 1146K	NTS	1 OF 5	REV A

TOOLS REQUIRED

CONTACT CEMENT
SCREW DRIVER
C-CLAMPS
SHIM STOCK (IF NEEDED)

ASSEMBLY COMPONENTS

ITEMS INCLUDED	PART #	PART DESCRIPTION	QTY
TOP	VARIES	TOP, (STYLE VARIES), 1.00X30X48,BLK	1
CABINET	N/A	16"W X 29"H X 27"D	1
BACK PANEL	N/A	31"W X 25"H X 0.75"D	1
APRON ASSEMBLY	N/A	APRON ASSEMBLY (FACTORY ASSEMBLED)	1
CLEATS	N/A	1"THK X 24.50"L X 0.75"D	2
SCREWS - CLEAT	100478	SCREW,#8X1 ¼ SQ. WASHER FLAT HEAD	15
L BRACKET	100355	BRACKET, RAIL 1.25X1.25X4.25	2
SCREWS - L BRACKET	100649	SCREW,#8X¾ PHIL TRUSS HEAD SMS	8
SILICONE	100711	SILICONE,SEALANT,CLEAR	1
RUBBER BASE MOLDING	100283	RUBBER BASE MOLDING (SOLD BY FOOT)	7
STAINLESS STEEL CORNERS	100057	CORNER-STAINLESS STEEL, BASE	4
SCREWS - BASE	100064	SCREW,#6X½ PTH SMS SS SCREW	16

NOTE:

- TOPS ARE EITHER PHENOLIC OR EPOXY.

DWN BY:	EMK	DWN DATE:	11/9/16
APR BY:		DATE APR:	
APR BY:		DATE APR:	

UNLESS OTHERWISE SPECIFIED
DIMENSION ARE IN INCHES
CABINET SQUARENESS ± .0625
FRACTIONAL VALUES ± 1/32"
- ALL VALUES ± OVERALL -



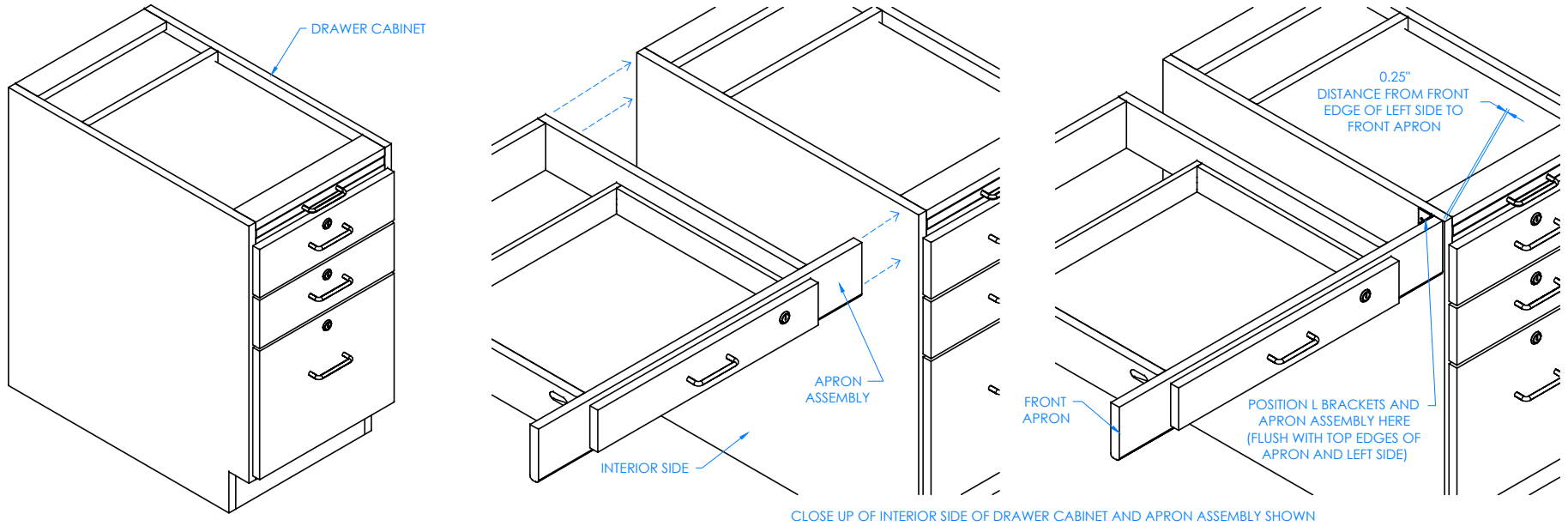
300 South Krueger Street
Suring, WI 54174
diversifiedwoodcrafts.com

TITLE:
SIDE DESK
TOOLS AND ASSEMBLY COMPONENTS

REV.	DESCRIPTION	DATE	NAME	ECN NO.
A	CREATED DRAWING	11/9/16	EMK	-

THIS DRAWING IS THE SOLE PROPERTY OF
DIVERSIFIED WOOD CRAFTS. IT MAY NOT
BE ALTERED OR CHANGED WITHOUT
PERMISSION

DRAWING NUMBER:	SCALE:	SHEET:	REVISION:
1144K & 1146K	NTS	2 OF 5	REV A



CLOSE UP OF INTERIOR SIDE OF DRAWER CABINET AND APRON ASSEMBLY SHOWN

STEP 1:
 SET DRAWER CABINET ON SIDE OF EXISTING INSTRUCTOR'S DESK YOU WANT THE SIDE DESK TO BE ON WITH ENOUGH SPACE IN BETWEEN CABINET AND INSTRUCTOR'S DESK FOR APRON ASSEMBLY AND BACK PANEL. SIDE DESK CAN BE ATTACHED TO EITHER SIDE OF AN INSTRUCTOR'S DESK. THESE INSTRUCTIONS SHOWN ARE FOR PLACEMENT ON RIGHT SIDE (MIRROR IMAGES FOR PLACEMENT ON LEFT SIDE).

STEP 2:
 WITH HELP FROM ANOTHER PERSON, POSITION THE APRON ASSEMBLY UP TO INTERIOR SIDE OF DRAWER CABINET SO IT IS POSITIONED CORRECTLY AND FLUSH WITH TOP EDGE OF DRAWER CABINET. POSITION THE L BRACKET IN CORRECT POSITION ON APRON ASSEMBLY AND LEFT SIDE OF CABINET (SHOULD BE FLUSH WITH TOP EDGES OF FRONT APRON AND LEFT SIDE). MARK ON THE SIDE OF THE CABINET WHERE THE L BRACKET NEEDS TO BE ATTACHED. REPEAT ON OTHER SIDE OF APRON ASSEMBLY TO EXISTING INSTRUCTOR'S DESK. SET APRON ASSEMBLY AND L BRACKETS DOWN.

NOTE:
 1.

DWN BY:	EMK	DWN DATE:	11/9/16
APR BY:		DATE APR:	
APR BY:		DATE APR:	

UNLESS OTHERWISE SPECIFIED DIMENSION ARE IN INCHES

CABINET SQUARENESS ± .0625
 FRACTIONAL VALUES ± 1/32"
 - ALL VALUES ± OVERALL -

DIVERSIFIED WOODCRAFTS, INC

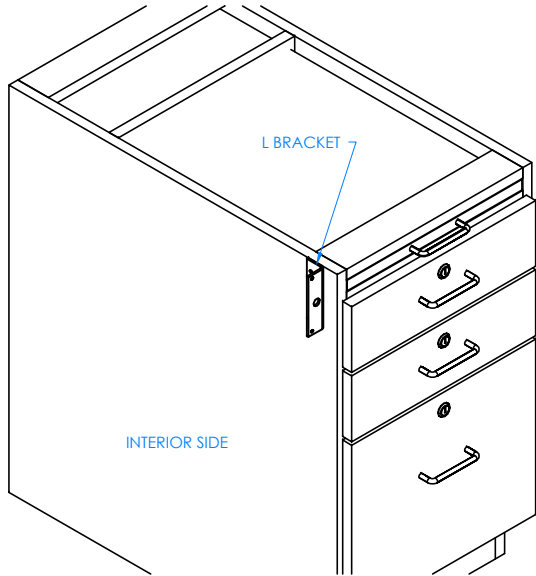
300 South Krueger Street
 Suring, WI 54174
 diversifiedwoodcrafts.com

TITLE:
SIDE DESK ASSEMBLY INSTRUCTIONS

DRAWING NUMBER:	SCALE:	SHEET:	REVISION:
1144K & 1146K	NTS	3 OF 5	REV A

REV.	DESCRIPTION	DATE	NAME	ECN NO.
A	CREATED DRAWING	11/9/16	EMK	-
REVISION LEVEL				

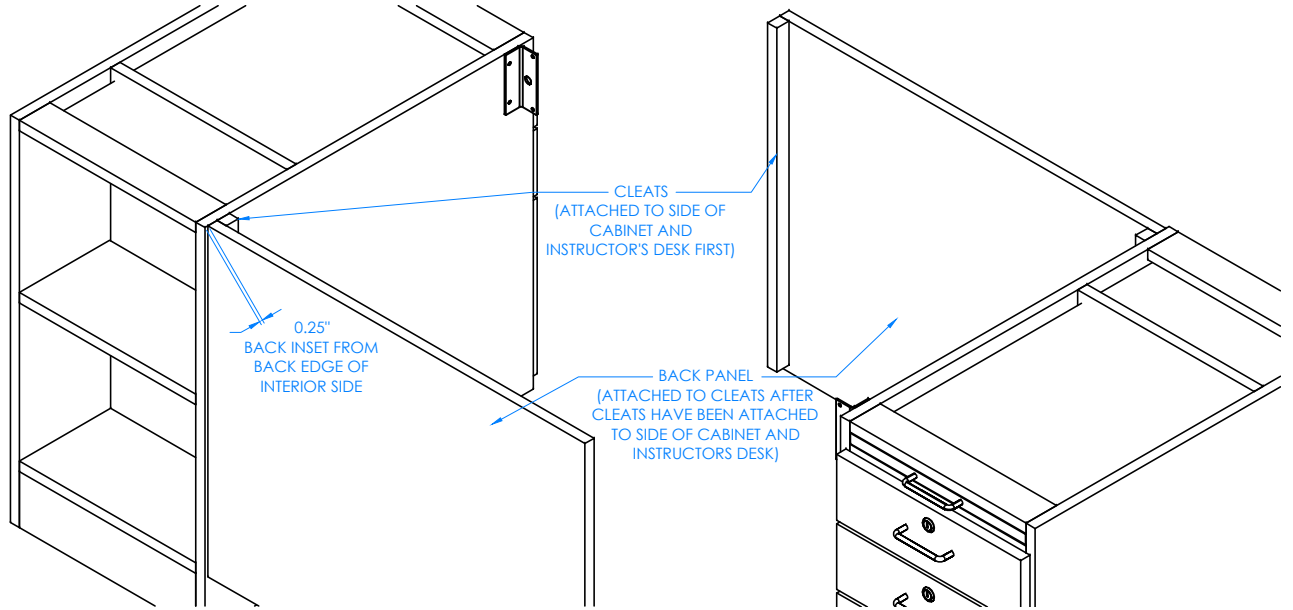
THIS DRAWING IS THE SOLE PROPERTY OF DIVERSIFIED WOOD CRAFTS. IT MAY NOT BE ALTERED OR CHANGED WITHOUT PERMISSION



CLOSE UP OF INTERIOR SIDE OF DRAWER CABINET SHOWN

STEP 3:

ATTACH L BRACKETS TO INTERIOR SIDE OF CABINET AND TO EXISTING INSTRUCTORS DESK (NOT SHOWN) WITH THE SCREWS PROVIDED.



STEP 4:

WITH HELP FROM ANOTHER PERSON, POSITION BACK PANEL ONTO BACK OF SIDE DESK AND INSTRUCTOR'S DESK. BACK SHOULD BE INSET $\frac{1}{4}$ " FROM BACK EDGE OF LEFT SIDE FOR BEST FIT. TOP EDGE OF BACK PANEL SHOULD BE FLUSH WITH TOP EDGE OF INTERIOR SIDE. POSITION CLEATS IN CORRECT LOCATION ON BOTH CORNERS OF BACK PANEL. MARK ON THE SIDES OF DRAWER CABINET AND INSTRUCTORS DESK WHERE THE CLEATS NEED TO BE. SET BACK PANEL DOWN. ATTACH CLEATS TO CABINET AND INSTRUCTOR'S DESK WITH THE SCREWS PROVIDED. PLACE BACK PANEL BACK ONTO CLEATS AND ATTACH TO CLEATS FROM INSIDE OF SIDE DESK. PRE DRILL HOLES IN CLEATS TO PREVENT CRACKING.

NOTE:

- 1.

DWN BY:	EMK	DWN DATE:	11/9/16
APR BY:		DATE APR:	
APR BY:		DATE APR:	



300 South Krueger Street
Suring, WI 54174
diversifiedwoodcrafts.com

UNLESS OTHERWISE SPECIFIED
DIMENSION ARE IN INCHES

CABINET SQUARENESS ± .0625
FRACTIONAL VALUES ± 1/32"
- ALL VALUES ± OVERALL -

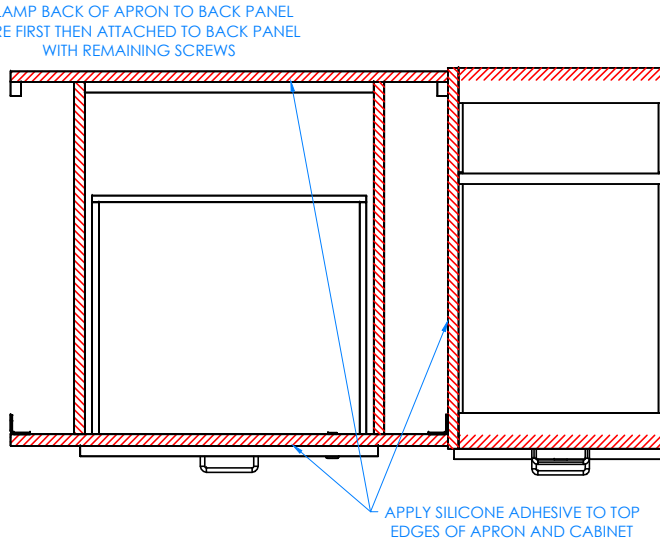
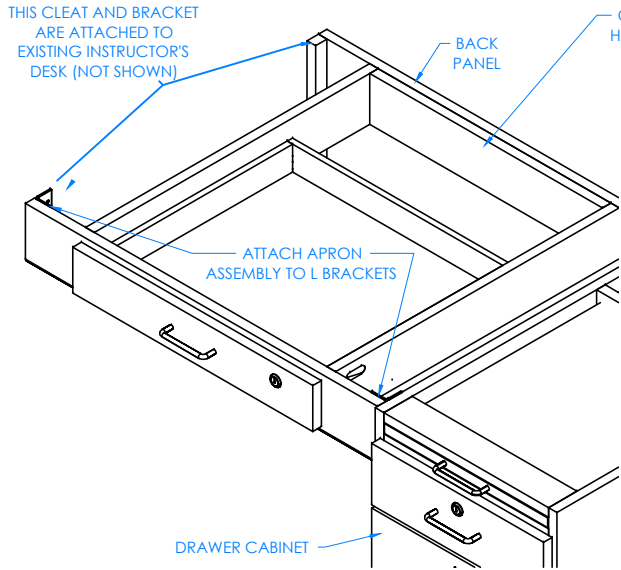
TITLE:
SIDE DESK
ASSEMBLY INSTRUCTIONS

REV.	DESCRIPTION	DATE	NAME	ECN NO.
A	CREATED DRAWING	11/9/16	EMK	-
REVISION LEVEL				

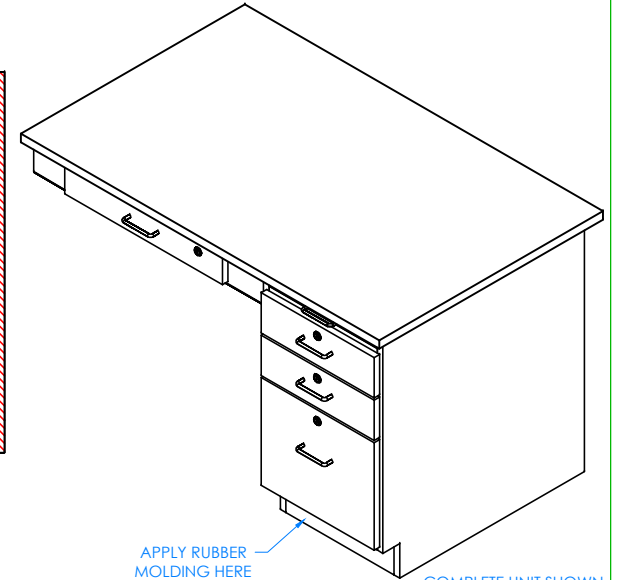
THIS DRAWING IS THE SOLE PROPERTY OF
DIVERSIFIED WOOD CRAFTS. IT MAY NOT
BE ALTERED OR CHANGED WITHOUT
PERMISSION

DRAWING NUMBER:	SCALE:	SHEET:	REVISION:
1144K & 1146K	NTS	4 OF 5	REV A

ASSEMBLY TEMPLATE



TOP VIEW OF INSTRUCTOR'S DESK SHOWN



COMPLETE UNIT SHOWN

STEP 5

WITH HELP FROM ANOTHER PERSON, POSITION APRON ASSEMBLY IN BETWEEN DRAWER CABINET AND INSTRUCTOR'S DESK SO TOP EDGES ARE FLUSH WITH TOP EDGE OF CABINET. MAKE SURE SIDE DESK IS LEVEL TO INSTRUCTOR'S DESK. CLAMP BACK OF APRON ASSEMBLY ONTO BACK PANEL. ATTACH FRONT APRON TO L BRACKETS ON SIDE OF CABINET AND EXISTING INSTRUCTOR'S DESK. REMOVE CLAMPS AND ATTACH APRON ASSEMBLY TO BACK PANEL WITH REMAINING SCREWS PROVIDED.

STEP 6:

APPLY SILICONE ADHESIVE TO TOP EDGES OF CABINET AND APRONS. PLACE TOP ON UNIT WITH PROPER OVERHANG (FLUSH TO INSTRUCTOR'S DESK AND CENTERED FRONT AND BACK). CLAMP ON TOP TO TOP RAILS OF CABINET AND APRON TO REMOVE ANY WARP USING SHIMS AND C-CLAMPS, IF NEEDED, WHEN ALIGNING THE TOP (DO THIS BEFORE ADHESIVE SETS UP). LET CURE FOR 6-12 HOURS.

STEP 7:

ATTACH RUBBER MOLDING TO BASE OF INSTRUCTOR'S DESK USING CONTACT CEMENT. AFTER MOLDING IS IN PLACE, SCREW STAINLESS STEEL CORNER BRACKETS ON EACH CORNER OVER BASE MOLDING WITH THE SCREWS PROVIDED.

NOTE:

1.

DWN BY:	EMK	DWN DATE:	11/9/16
APR BY:		DATE APR:	
APR BY:		DATE APR:	

UNLESS OTHERWISE SPECIFIED DIMENSION ARE IN INCHES

CABINET SQUARENESS ± .0625
FRACTIONAL VALUES ± 1/32"
- ALL VALUES ± OVERALL -



300 South Krueger Street
Suring, WI 54174
diversifiedwoodcrafts.com

TITLE:
SIDE DESK
ASSEMBLY INSTRUCTIONS

REV.	DESCRIPTION	DATE	NAME	ECN NO.
A	CREATED DRAWING	11/9/16	EMK	-
REVISION LEVEL				

THIS DRAWING IS THE SOLE PROPERTY OF
DIVERSIFIED WOOD CRAFTS. IT MAY NOT
BE ALTERED OR CHANGED WITHOUT
PERMISSION

DRAWING NUMBER:

1144K & 1146K

SCALE:	SHEET:	REVISION:
NTS	5 OF 5	REV A