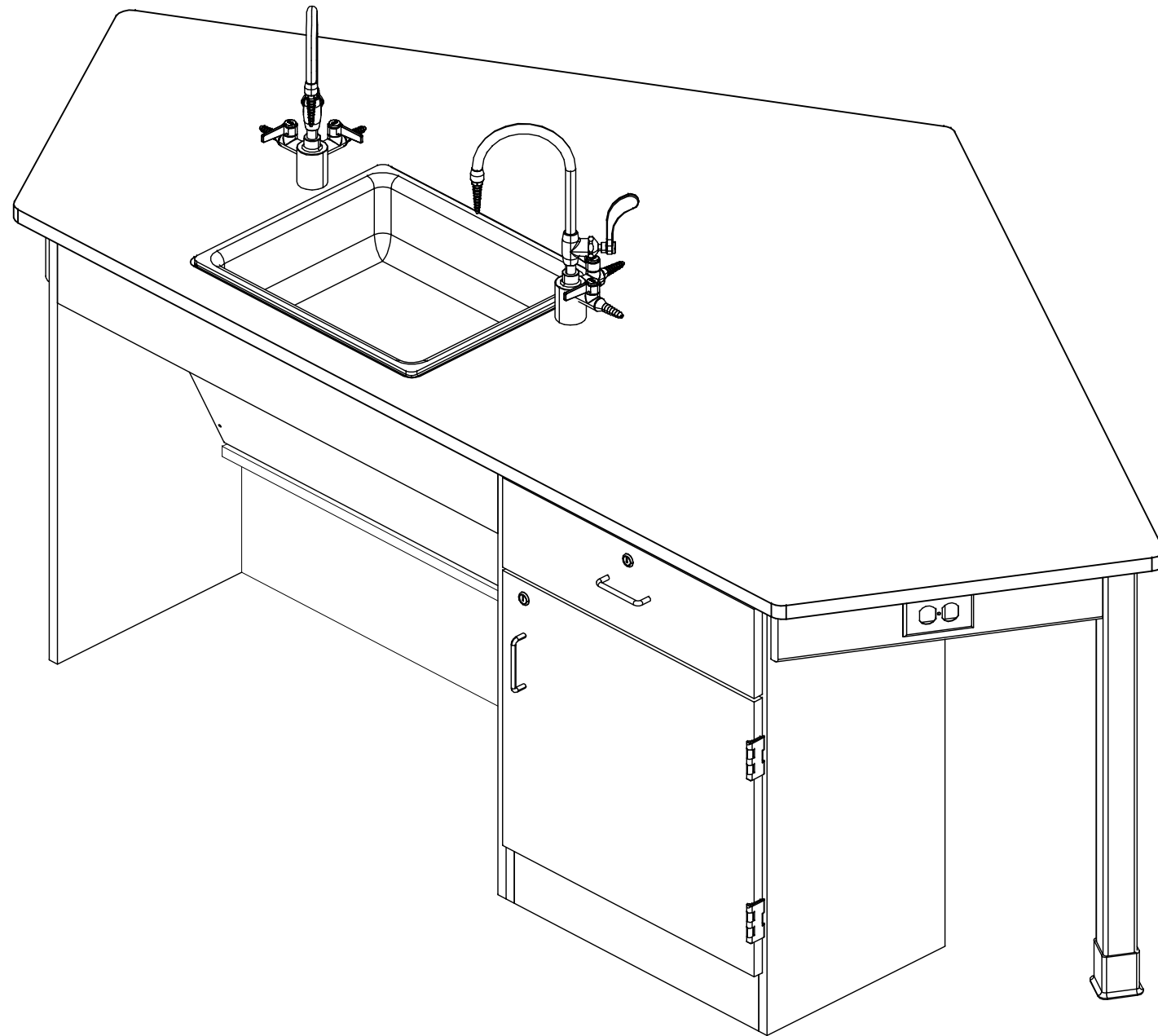


FORWARD VISION ADA

2946K-L-ADA, 2946KF-L-ADA, 2946K-R-ADA, 2946KF-R-ADA, 2956K-L-ADA, 2956KF-L-ADA, 2956K-R-ADA, & 2956KF-R-ADA SERIES
 ASSEMBLY INSTRUCTIONS



NOTE:

1. MODEL VIEWS MAY NOT REPRESENT EXACT MODEL PURCHASED

ALL DIMENSIONS ARE IN INCHES UNLESS NOTED OTHERWISE	DWN BY:	EMR	DATE DWN:	11/14/16
DECIMALS: .X = ± .030	APR BY:		DATE APR:	
.XX = ± .020	APR BY:		DATE APR:	
.XXX = ± .010	APR BY:		DATE APR:	
ANGLES: = ± 1°				
CABINET SQUARENESS = ± .0625				

CONFIDENTIAL:
 ALL DESIGN RIGHTS RESERVED.
 THE INFORMATION, DATA, DESIGN, AND DRAWINGS EMBODIED IN THIS DOCUMENT AND ALL REPRODUCTIONS THEREOF ARE THE EXCLUSIVE PROPERTY OF DIVERSIFIED WOODCRAFTS, INC.

THESE DOCUMENTS ARE SUPPLIED WITH THE UNDERSTANDING THAT THEY WILL NOT BE DISCLOSED TO THIRD PARTIES WITHOUT WRITTEN CONSENT OF DIVERSIFIED WOODCRAFTS, INC. ANY REPRODUCTION IN PART OR WHOLE WITHOUT WRITTEN CONSENT IS SUBJECT TO LEGAL ACTION.



300 South Krueger Street
 Suring, WI 54174
 diversifiedwoodcrafts.com

TITLE:
 FORWARD VISION ADA
 ASSEMBLY INSTRUCTIONS

REV.	DESCRIPTION	DATE	NAME	ECN NO.
B	UPDATED SILICONE PROCEDURE	8/21/23	RJM	-
A	CREATED DRAWING	11/14/16	EMR	-

REVISION LEVEL

DRAWING NUMBER:	SCALE:	SHEET:	REVISION:
FORWARD VISION ADA	NTS	1 OF 12	REV B

TOOLS REQUIRED

1/2" WRENCH
1/2" SOCKET AND TORQUE WRENCH - OPTIONAL
CONTACT CEMENT
SCREW DRIVER
C-CLAMPS
SHIM STOCK (IF NEEDED)

ASSEMBLY COMPONENTS

ITEMS INCLUDED	PART #	PART DESCRIPTION	QTY
TOP	VARIES	TOP,EPOXY,1.00X50.19X95.88XBLK, (FIXTURE OR FLAT)	1
CABINET	N/A	24"W X 32.50"H X 16."D	1
CABINET	N/A	42"W X 32.50"H X 22"D	1
LONG APRON	N/A	0.81"THK X 4.50"W X 49"L	2
SHORT APRON	N/A	0.81"THK X 4.50"W X 21.88"L	2
BRACKET - APRON TO CABINET	100972	BRACKET, APRON TO CABINET	2
SCREWS - APRON TO CABINET	100037	SCREW,#10X5/8 QUAD PNHD LUB	4
BOLT - APRON TO CABINET	100387	BOLT, 3/8 -16X1.50 HEX HEAD	4
NUT - APRON TO CABINET	100621	NUT, 3/8 -16 HEX ZINC	4
WASHER - APRON TO CABINET	100451	WASHER,5/16 FLAT ZINC PLATED	4
BRACKET - APRON TO APRON	100376	BRACKET, APRON TO APRON	1
SCREWS - APRON TO APRON	100037	SCREW,#10X5/8 QUAD PNHD LUB	8
BOLT - APRON TO APRON	100381	BOLT,5/16 X2- 3/4, CARRIAGE BOLT	2
NUT - APRON TO APRON	100044	NUT,HEX 5/16 -18 STEEL ZINC	2
WASHER - APRON TO APRON	100451	WASHER,5/16 FLAT ZINC PLATED	2
BRACKET - CORNER LEG	100077	CORNERS,STEEL TABLE APRON	2
SCREWS - CORNER LEG	100037	SCREW,#10X5/8 QUAD PNHD LUB	8
LEGS	500103	LEG,OAK,2.25X2.25X32.25	3
LEG HARDWARE KIT	520001	LEG HARDWARE KIT,1 LEG	2
LEG LEVELER	100079	LEG LEVELER,BLK,BASE 1	1
LEG BOOT	100076	LEG BOOT,BLK RUBBER	3

NOTE:

- **XX** INDICATES ITEMS USED ONLY FOR THE "K" SERIES.

REV.	DESCRIPTION	DATE	NAME	ECN NO.
B	UPDATED SILICONE PROCEDURE	8/21/23	RJM	-
A	CREATED DRAWING	11/14/16	EMR	-
REVISION LEVEL				

ALL DIMENSIONS ARE IN INCHES UNLESS NOTED OTHERWISE DECIMALS: .X = ± .030 .XX = ± .020 .XXX = ± .010 ANGLES: = ± 1° CABINET SQUARENESS = ± .0625	DWN BY: EMR APR BY: APR BY:	DATE DWN: 11/14/16 DATE APR: DATE APR:
---	-----------------------------------	--

CONFIDENTIAL:
ALL DESIGN RIGHTS RESERVED
THE INFORMATION, DATA, DESIGN, AND DRAWINGS EMBODIED IN THIS DOCUMENT AND ALL REPRODUCTIONS THEREOF ARE THE EXCLUSIVE PROPERTY OF DIVERSIFIED WOODCRAFTS, INC.

THESE DOCUMENTS ARE SUPPLIED WITH THE UNDERSTANDING THAT THEY WILL NOT BE DISCLOSED TO THIRD PARTIES WITHOUT WRITTEN CONSENT OF DIVERSIFIED WOODCRAFTS, INC. ANY REPRODUCTION IN PART OR WHOLE WITHOUT WRITTEN CONSENT IS SUBJECT TO LEGAL ACTION.



300 South Krueger Street
Suring, WI 54174
diversifiedwoodcrafts.com

TITLE:
FORWARD VISION ADA
TOOLS AND ASSEMBLY COMPONENTS

DRAWING NUMBER: FORWARD VISION ADA	SCALE: NTS	SHEET: 2 OF 12	REVISION: REV B
--	---------------	-------------------	--------------------

ASSEMBLY COMPONENTS

ITEMS INCLUDED	PART #	PART DESCRIPTION	QTY
SILICONE	100711	SILICONE,SEALANT,CLEAR	1
RUBBER BASE MOLDING	100283	RUBBER BASE MOLDING (SOLD BY FOOT)	21
STAINLESS STEEL CORNERS	100057	CORNERS-STAINLESS STEEL,BASE	10
SCREWS - BASE	100064	SCREW,#6X 1/2 PTH SMS SS SCREW	40
ELECTRICAL BOX	100033	ELECTRICAL BOX 3.00X2X2.5 DEEP	2
ELECTRICAL OUTLET	100034	ELEC,OUTLET,GFI,20A 125V,BLK	2
FIXTURE - FAUCET	223575	FIXTURE,L65-DIV-BH-WSA(MULTI-SERVICE)	2
FIXTURE - SINK	100690	SINK,EPOXY LADA 25,BLK	1
FIXTURE - SINK TRAP	100056	SINK TRAP,PLASTIC ADJUSTABLE	1
FIXTURE - SINK STOPPER	100112	SINK STOPPER 1 1/2,BLK	1
FIXTURE - STRAINER	100055	SINK,OUTLET/STRAINER EPOXY,BLK	1

NOTE:

- **XX** INDICATES ITEMS USED ONLY FOR THE "K" SERIES.

REV.	DESCRIPTION	DATE	NAME	ECN NO.
B	UPDATED SILICONE PROCEDURE	8/21/23	RJM	-
A	CREATED DRAWING	11/14/16	EMR	-
REVISION LEVEL				

ALL DIMENSIONS ARE IN INCHES UNLESS NOTED OTHERWISE DECIMALS: .X = ± .030 .XX = ± .020 .XXX = ± .010 ANGLES: = ± 1° CABINET SQUARENESS = ± .0625	DWN BY: EMR APR BY: APR BY:	DATE DWN: 11/14/16 DATE APR: DATE APR:
---	-----------------------------------	--

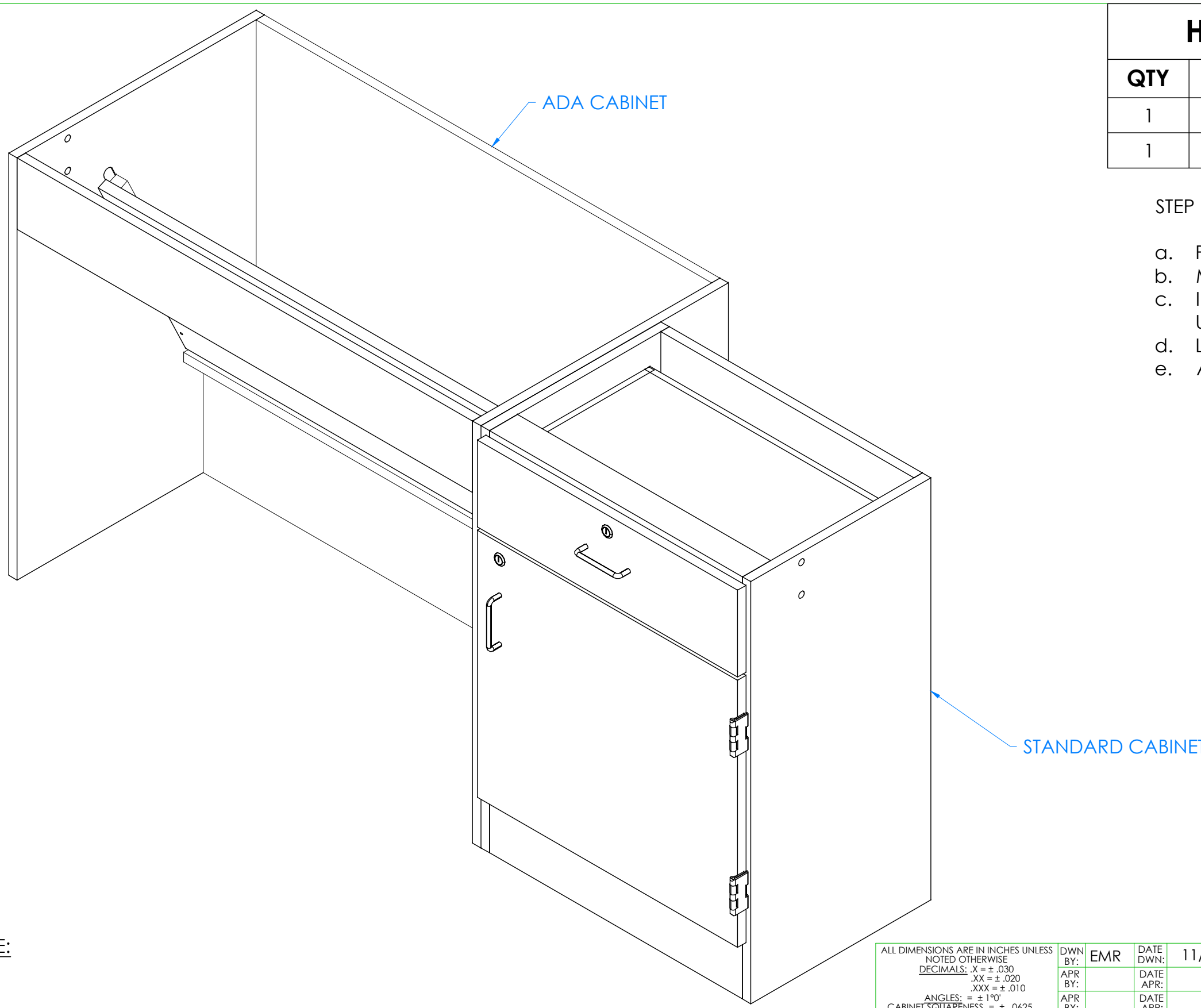
CONFIDENTIAL:
 ALL DESIGN RIGHTS RESERVED.
 THE INFORMATION, DATA, DESIGN, AND DRAWINGS EMBODIED IN THIS DOCUMENT AND ALL REPRODUCTIONS THEREOF ARE THE EXCLUSIVE PROPERTY OF DIVERSIFIED WOODCRAFTS, INC.

THESE DOCUMENTS ARE SUPPLIED WITH THE UNDERSTANDING THAT THEY WILL NOT BE DISCLOSED TO THIRD PARTIES WITHOUT WRITTEN CONSENT OF DIVERSIFIED WOODCRAFTS, INC. ANY REPRODUCTION IN PART OR WHOLE WITHOUT WRITTEN CONSENT IS SUBJECT TO LEGAL ACTION.

300 South Krueger Street
Suring, WI 54174
diversifiedwoodcrafts.com

TITLE:
FORWARD VISION ADA TOOLS AND ASSEMBLY COMPONENTS

DRAWING NUMBER:	SCALE:	SHEET:	REVISION:
FORWARD VISION ADA	NTS	3 OF 12	REV B



HARDWARE REQUIRED FOR STEP

QTY	DESCRIPTION	PART NUMBER
1	CABINET	N/A
1	CABINET	N/A

STEP 1:

- a. POSITION THE TWO CABINETS IN DESIRED LOCATION.
- b. MAKE SURE DOOR HINGES ARE ON THE OUTSIDE.
- c. IF YOU HAVE A "K" SERIES UNIT, PLACE UNIT OVER UTILITY HOOKUPS.
- d. LEVEL CABINETS.
- e. ATTACH TO FLOOR.

NOTE:

1.

ALL DIMENSIONS ARE IN INCHES UNLESS NOTED OTHERWISE DECIMALS: .X = ± .030 .XX = ± .020 .XXX = ± .010 ANGLES: = ± 1° CABINET SQUARENESS = ± .0625	DWN BY: EMR APR BY: APR BY:	DATE DWN: 11/14/16 DATE APR: DATE APR:
---	-----------------------------------	--



300 South Krueger Street
Suring, WI 54174
diversifiedwoodcrafts.com

CONFIDENTIAL:
ALL DESIGN RIGHTS RESERVED.
THE INFORMATION, DATA, DESIGN, AND DRAWINGS EMBODIED IN THIS DOCUMENT AND ALL REPRODUCTIONS THEREOF ARE THE EXCLUSIVE PROPERTY OF DIVERSIFIED WOODCRAFTS, INC.

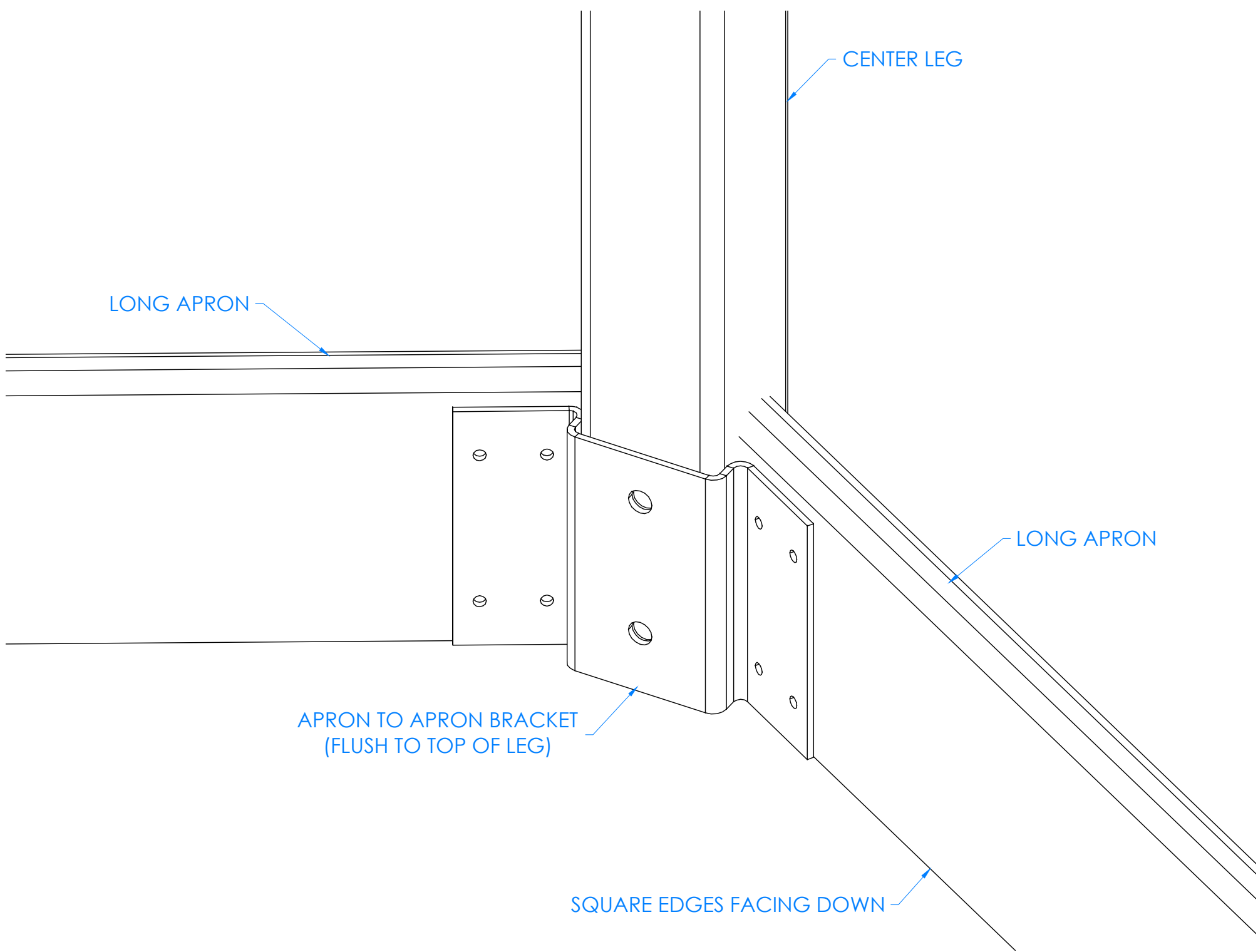
TITLE:
FORWARD VISION ADA ASSEMBLY INSTRUCTIONS

REV.	DESCRIPTION	DATE	NAME	ECN NO.
B	UPDATED SILICONE PROCEDURE	8/21/23	RJM	-
A	CREATED DRAWING	11/14/16	EMR	-

REVISION LEVEL

THESE DOCUMENTS ARE SUPPLIED WITH THE UNDERSTANDING THAT THEY WILL NOT BE DISCLOSED TO THIRD PARTIES WITHOUT WRITTEN CONSENT OF DIVERSIFIED WOODCRAFTS, INC. ANY REPRODUCTION IN PART OR WHOLE WITHOUT WRITTEN CONSENT IS SUBJECT TO LEGAL ACTION.

DRAWING NUMBER: FORWARD VISION ADA	SCALE: NTS	SHEET: 4 OF 12	REVISION: REV B
--	---------------	-------------------	--------------------



HARDWARE REQUIRED FOR STEP

QTY	DESCRIPTION	PART NUMBER
2	LONG APRON	N/A
1	BRACKET - APRON TO APRON	100376
8	SCREWS - APRON TO APRON	100037
1	LEG	500103
2	BOLT - APRON TO APRON	100381
2	NUT - APRON TO APRON	100044
2	WASHER - APRON TO APRON	100451

STEP 2:

- a. LAYOUT WORKSTATION FRAME WITH SQUARE EDGES OF APRONS ON FLOOR AND BOTTOM OF LEGS FACING UP.
- b. ATTACH THE APRON TO APRON BRACKET ONTO CENTER LEG WITH HARDWARE PROVIDED.
- c. MAKE SURE BRACKET IS FLUSH TO TOP OF LEG.
- d. TIGHTEN NUTS USING A 1/2" WRENCH OR 1/2" SOCKET AND TORQUE WRENCH, TO A MINIMUM OF 12FT LBS BUT NOT TO EXCEED 17FT LBS.
- e. ATTACH THE TWO LONG APRONS TO THE APRON TO APRON BRACKET WITH HARDWARE PROVIDED.

NOTE:

1.

CLOSE UP OF CENTER LEG AND APRON TO APRON BRACKET ASSEMBLY

REV.	DESCRIPTION	DATE	NAME	ECN NO.
B	UPDATED SILICONE PROCEDURE	8/21/23	RJM	-
A	CREATED DRAWING	11/14/16	EMR	-
REVISION LEVEL				

ALL DIMENSIONS ARE IN INCHES UNLESS NOTED OTHERWISE
 DECIMALS: .X = ± .030
 .XX = ± .020
 .XXX = ± .010
 ANGLES: = ± 1°
 CABINET SQUARENESS = ± .0625

DWN BY:	EMR	DATE DWN:	11/14/16
APR BY:		DATE APR:	
APR BY:		DATE APR:	

CONFIDENTIAL:
 ALL DESIGN RIGHTS RESERVED.
 THE INFORMATION, DATA, DESIGN, AND DRAWINGS EMBODIED IN THIS DOCUMENT AND ALL REPRODUCTIONS THEREOF ARE THE EXCLUSIVE PROPERTY OF DIVERSIFIED WOODCRAFTS, INC.

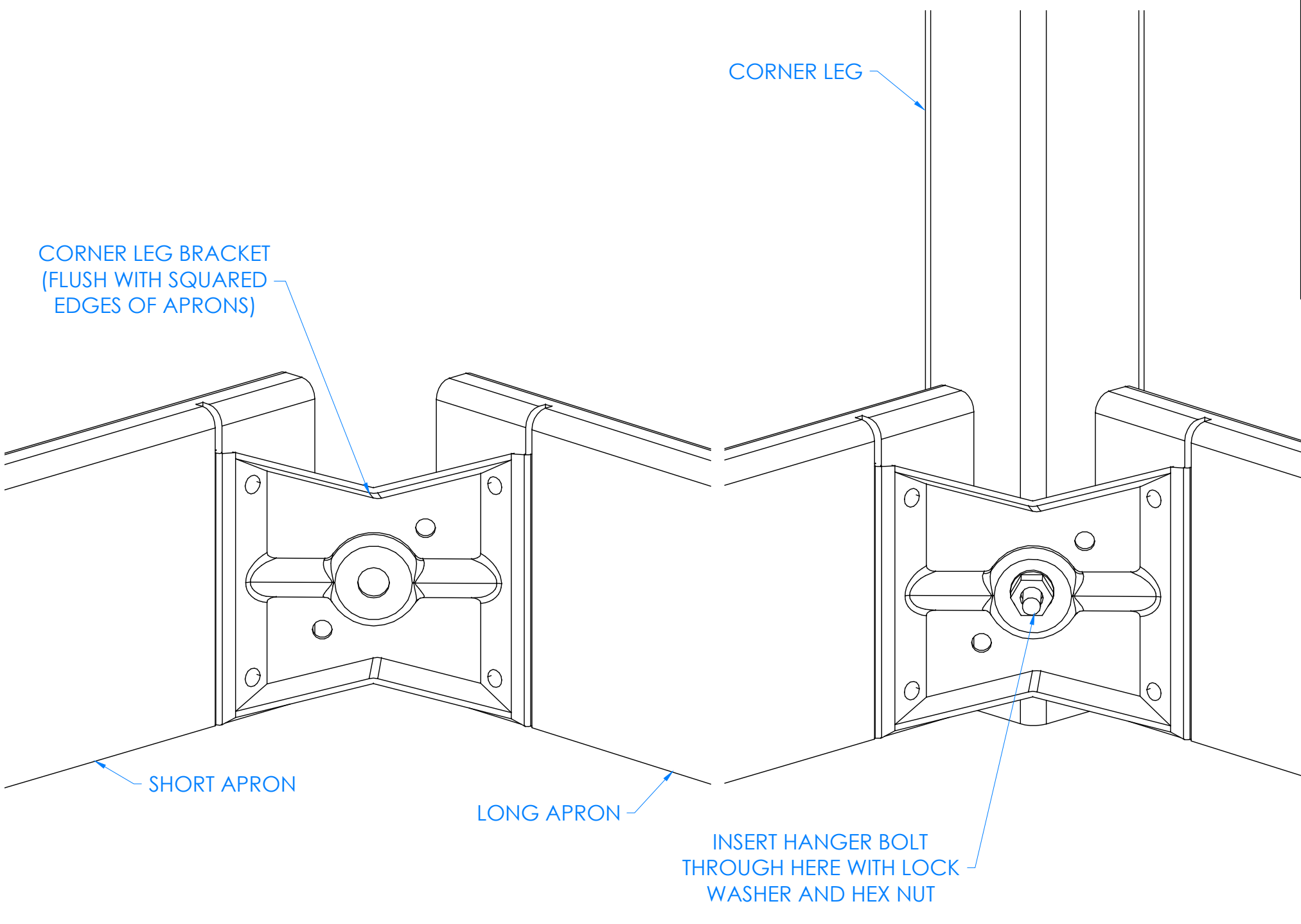
THESE DOCUMENTS ARE SUPPLIED WITH THE UNDERSTANDING THAT THEY WILL NOT BE DISCLOSED TO THIRD PARTIES WITHOUT WRITTEN CONSENT OF DIVERSIFIED WOODCRAFTS, INC. ANY REPRODUCTION IN PART OR WHOLE WITHOUT WRITTEN CONSENT IS SUBJECT TO LEGAL ACTION.



300 South Krueger Street
 Suring, WI 54174
 diversifiedwoodcrafts.com

TITLE:
FORWARD VISION ADA ASSEMBLY INSTRUCTIONS

DRAWING NUMBER:	SCALE:	SHEET:	REVISION:
FORWARD VISION ADA	NTS	5 OF 12	REV B



HARDWARE REQUIRED FOR STEP		
QTY	DESCRIPTION	PART NUMBER
2	SHORT APRON	N/A
2	BRACKET - CORNER LEG	100077
8	SCREWS - CORNER LEG	100037
2	LEG	500103
2	LEG HARDWARE KIT	520001

STEP 3:

- a. CONNECT LONG APRON AND SHORT APRON TOGETHER BY USING THE CORNER LEG BRACKET.
- b. MAKE SURE BRACKET IS FLUSH WITH SQUARE EDGES OF APRONS.
- c. INSERT HANGER BOLT ON ONE OF LEGS THROUGH THE CORNER BRACKET AND INSERT LOCK WASHER AND HEX NUT.
- d. TIGHTEN NUT USING A 1/2" WRENCH OR 1/2" SOCKET AND TORQUE WRENCH, TO A MINIMUM OF 12FT LBS BUT NOT TO EXCEED 17FT LBS.
- e. REPEAT FOR OTHER CORNER LEG.

NOTE:

1.

CLOSE UP OF CORNER LEG AND CORNER LEG BRACKET ASSEMBLY

ALL DIMENSIONS ARE IN INCHES UNLESS NOTED OTHERWISE DECIMALS: .X = ± .030 .XX = ± .020 .XXX = ± .010 ANGLES: = ± 1° CABINET SQUARENESS = ± .0625	DWN BY: EMR APR BY: APR BY:	DATE DWN: 11/14/16 DATE APR: DATE APR:
---	-----------------------------------	--



300 South Krueger Street
Suring, WI 54174
diversifiedwoodcrafts.com

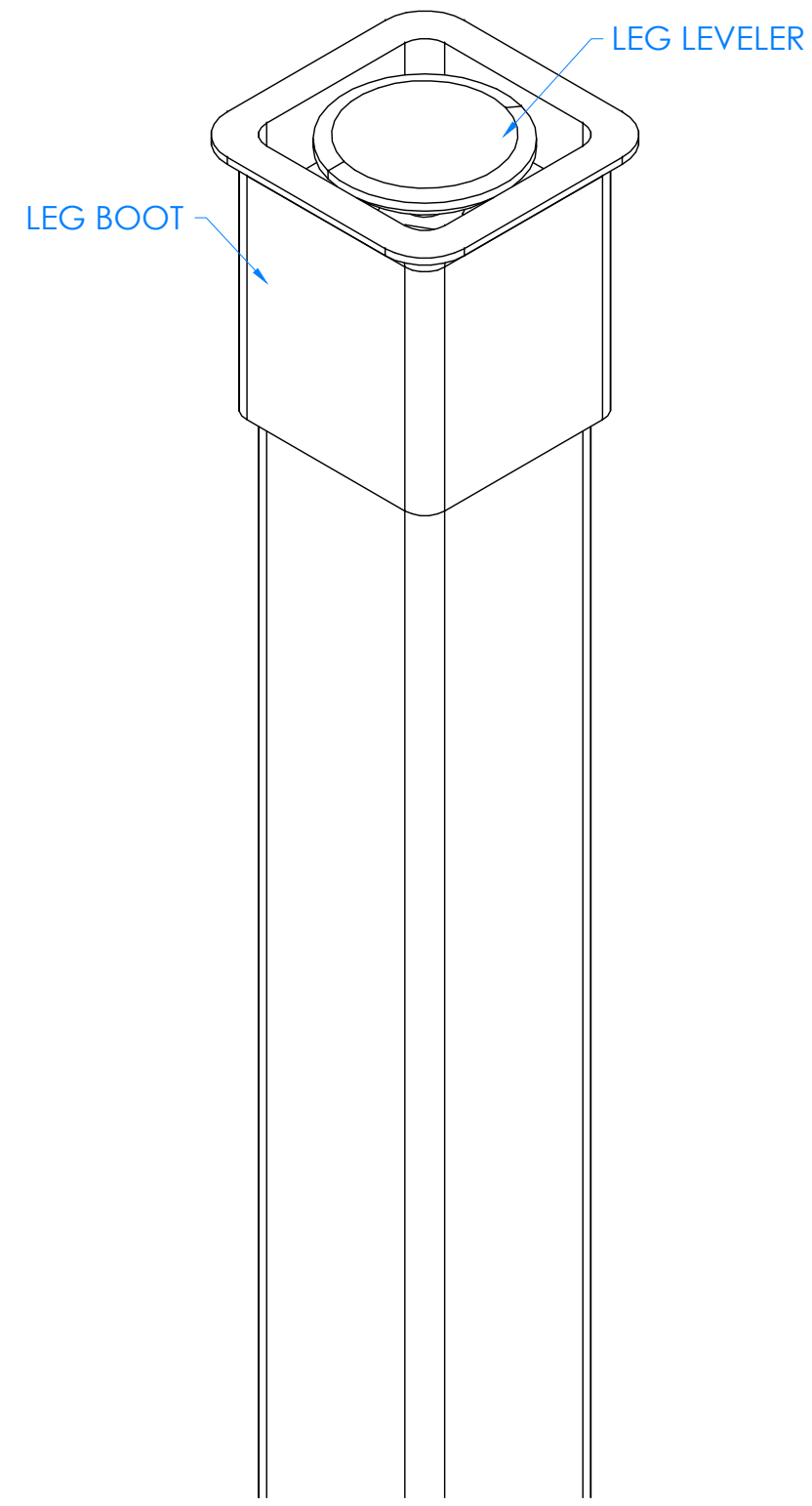
CONFIDENTIAL:
ALL DESIGN RIGHTS RESERVED.
THE INFORMATION, DATA, DESIGN, AND DRAWINGS EMBODIED IN THIS DOCUMENT AND ALL REPRODUCTIONS THEREOF ARE THE EXCLUSIVE PROPERTY OF DIVERSIFIED WOODCRAFTS, INC.

TITLE:
FORWARD VISION ADA ASSEMBLY INSTRUCTIONS

THESE DOCUMENTS ARE SUPPLIED WITH THE UNDERSTANDING THAT THEY WILL NOT BE DISCLOSED TO THIRD PARTIES WITHOUT WRITTEN CONSENT OF DIVERSIFIED WOODCRAFTS, INC. ANY REPRODUCTION IN PART OR WHOLE WITHOUT WRITTEN CONSENT IS SUBJECT TO LEGAL ACTION.

DRAWING NUMBER: FORWARD VISION ADA	SCALE: NTS	SHEET: 6 OF 12	REVISION: REV B
--	---------------	-------------------	--------------------

REV.	DESCRIPTION	DATE	NAME	ECN NO.
B	UPDATED SILICONE PROCEDURE	8/21/23	RJM	-
A	CREATED DRAWING	11/14/16	EMR	-
REVISION LEVEL				



HARDWARE REQUIRED FOR STEP		
QTY	DESCRIPTION	PART NUMBER
2	LEG HARDWARE KIT	520001
1	LEG LEVELER	100079
3	LEG BOOT	100076

STEP 4:

- a. SLIDE LEG BOOT ONTO LEG WITH FLARED END TOWARDS BOTTOM OF LEG.
- b. SCREW LEG LEVELER INTO T-NUT ON BOTTOM OF THE LEG.
- c. REPEAT FOR ALL LEGS.

CLOSE UP OF LEG LEVELER AND LEG BOOT ASSEMBLY

NOTE:

1.

ALL DIMENSIONS ARE IN INCHES UNLESS NOTED OTHERWISE DECIMALS: .X = ± .030 .XX = ± .020 .XXX = ± .010 ANGLES: = ± 1° CABINET SQUARENESS = ± .0625	DWN BY: EMR APR BY: APR BY:	DATE DWN: 11/14/16 DATE APR: DATE APR:
---	-----------------------------------	--



300 South Krueger Street
Suring, WI 54174
diversifiedwoodcrafts.com

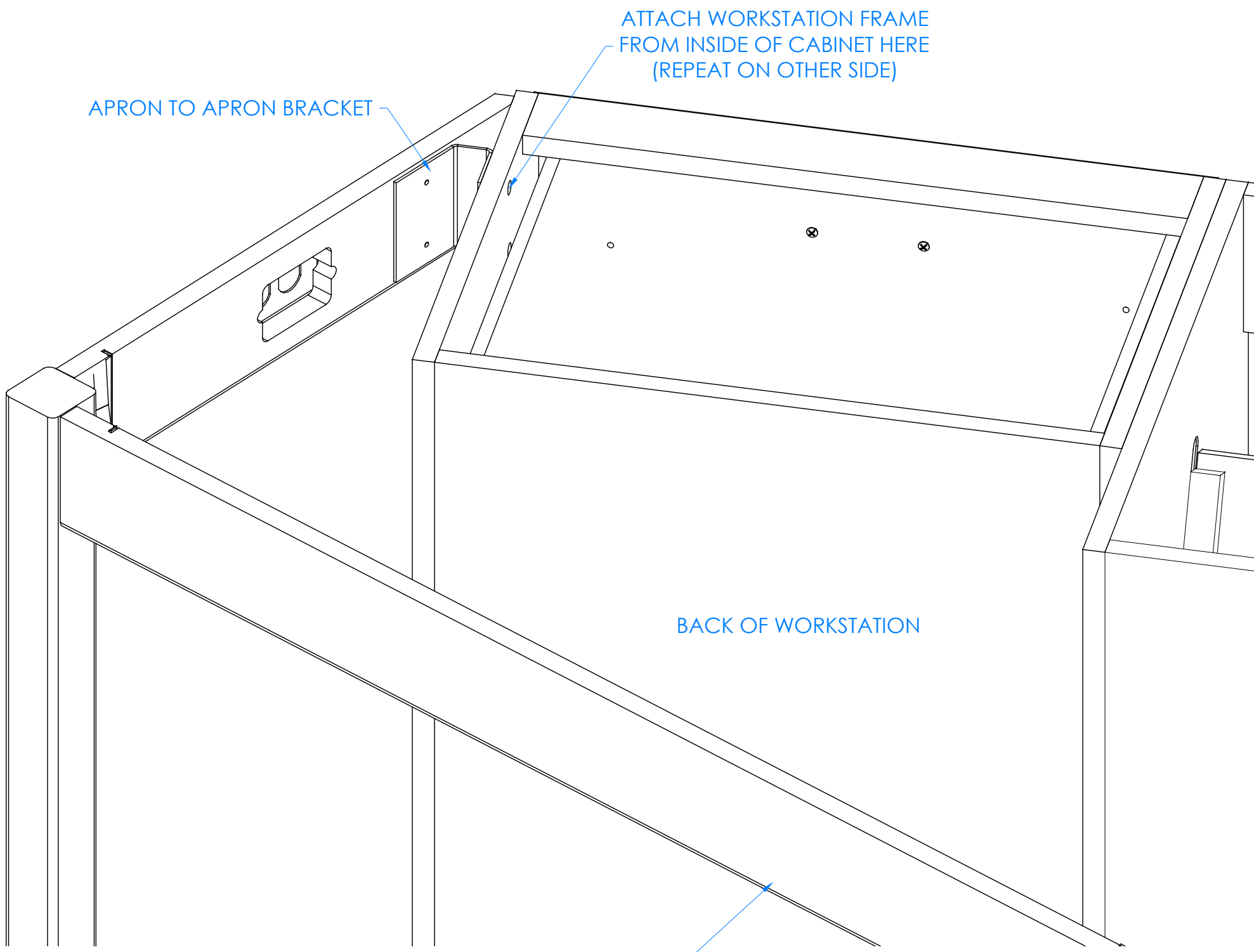
CONFIDENTIAL:
ALL DESIGN RIGHTS RESERVED.
THE INFORMATION, DATA, DESIGN, AND DRAWINGS EMBODIED IN THIS DOCUMENT AND ALL REPRODUCTIONS THEREOF ARE THE EXCLUSIVE PROPERTY OF DIVERSIFIED WOODCRAFTS, INC.

TITLE:
FORWARD VISION ADA
ASSEMBLY INSTRUCTIONS

THESE DOCUMENTS ARE SUPPLIED WITH THE UNDERSTANDING THAT THEY WILL NOT BE DISCLOSED TO THIRD PARTIES WITHOUT WRITTEN CONSENT OF DIVERSIFIED WOODCRAFTS, INC. ANY REPRODUCTION IN PART OR WHOLE WITHOUT WRITTEN CONSENT IS SUBJECT TO LEGAL ACTION.

DRAWING NUMBER: FORWARD VISION ADA	SCALE: NTS	SHEET: 7 OF 12	REVISION: REV B
--	---------------	-------------------	--------------------

REV.	DESCRIPTION	DATE	NAME	ECN NO.
B	UPDATED SILICONE PROCEDURE	8/21/23	RJM	-
A	CREATED DRAWING	11/14/16	EMR	-
REVISION LEVEL				



HARDWARE REQUIRED FOR STEP		
QTY	DESCRIPTION	PART NUMBER
2	BRACKET - APRON TO CABINET	100972
4	SCREWS - APRON TO CABINET	100037
4	BOLT - APRON TO CABINET	100387
4	NUT - APRON TO CABINET	100621
4	WASHER - APRON TO CABINET	100451

STEP 5:

- a. WITH HELP FROM ANOTHER PERSON, STAND WORKSTATION FRAME UP.
- b. POSITION FRAME UP TO CABINET, MAKING SURE APRONS ARE SET IN 1/4" FROM FRONT OF CABINETS.
- c. ATTACH APRON TO CABINET BRACKET ONTO APRON WITH REMAINING SCREWS PROVIDED.
- d. ATTACH BRACKET ONTO SIDES OF WORKSTATION BY GOING INSIDE OF THE CABINETS AND PLACING BOLTS THROUGH THE HOLES PROVIDED ON SIDES OF CABINET.
- e. INSERT WASHERS, AND NUTS ON OUTSIDE .
- f. TIGHTEN NUTS USING A 1/2" WRENCH OR 1/2" SOCKET AND TORQUE WRENCH, TO A MINIMUM OF 12FT LBS BUT NOT TO EXCEED 17FT LBS.

NOTE:

1.

WORKSTATION FRAME

ALL DIMENSIONS ARE IN INCHES UNLESS NOTED OTHERWISE DECIMALS: .X = ± .030 .XX = ± .020 .XXX = ± .010 ANGLES: = ± 1° CABINET SQUARENESS = ± .0625	DWN BY: EMR APR BY: APR BY:	DATE DWN: 11/14/16 DATE APR: DATE APR:
---	-----------------------------------	--



300 South Krueger Street
Suring, WI 54174
diversifiedwoodcrafts.com

CONFIDENTIAL:
ALL DESIGN RIGHTS RESERVED
THE INFORMATION, DATA, DESIGN, AND DRAWINGS EMBODIED IN THIS DOCUMENT AND ALL REPRODUCTIONS THEREOF ARE THE EXCLUSIVE PROPERTY OF DIVERSIFIED WOODCRAFTS, INC.

TITLE:
FORWARD VISION ADA
ASSEMBLY INSTRUCTIONS

THESE DOCUMENTS ARE SUPPLIED WITH THE UNDERSTANDING THAT THEY WILL NOT BE DISCLOSED TO THIRD PARTIES WITHOUT WRITTEN CONSENT OF DIVERSIFIED WOODCRAFTS, INC. ANY REPRODUCTION IN PART OR WHOLE WITHOUT WRITTEN CONSENT IS SUBJECT TO LEGAL ACTION.

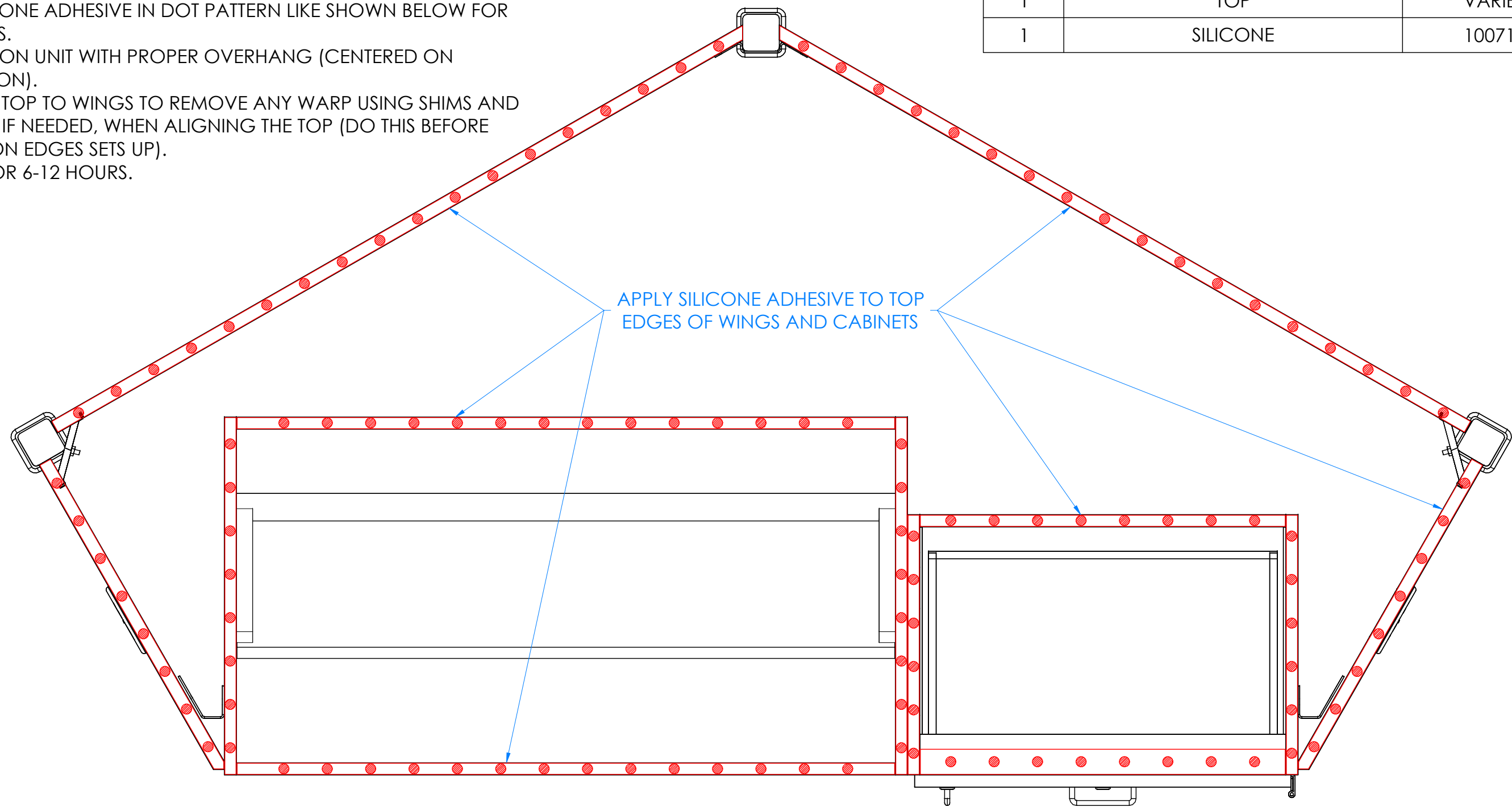
REV.	DESCRIPTION	DATE	NAME	ECN NO.
B	UPDATED SILICONE PROCEDURE	8/21/23	RJM	-
A	CREATED DRAWING	11/14/16	EMR	-

DRAWING NUMBER: FORWARD VISION ADA	SCALE: NTS	SHEET: 8 OF 12	REVISION: REV B
--	---------------	-------------------	--------------------

STEP 6:

- a. ADJUST LEG LEVELERS TO LEVEL WORKSTATION FRAME WITH CABINETS.
- b. APPLY SILICONE ADHESIVE TO TOP EDGES OF CABINET AND WINGS.
- c. APPLY SILICONE ADHESIVE IN DOT PATTERN LIKE SHOWN BELOW FOR BEST RESULTS.
- d. PLACE TOP ON UNIT WITH PROPER OVERHANG (CENTERED ON WORKSTATION).
- e. CLAMP ON TOP TO WINGS TO REMOVE ANY WARP USING SHIMS AND C-CLAMPS, IF NEEDED, WHEN ALIGNING THE TOP (DO THIS BEFORE ADHESIVE ON EDGES SETS UP).
- f. LET CURE FOR 6-12 HOURS.

HARDWARE REQUIRED FOR STEP		
QTY	DESCRIPTION	PART NUMBER
1	TOP	VARIES
1	SILICONE	100711



NOTE:

1.

TOP VIEW OF WORKSTATION SHOWN

ALL DIMENSIONS ARE IN INCHES UNLESS NOTED OTHERWISE	DWN BY: EMR	DATE DWN: 11/14/16
DECIMALS: .X = ± .030	APR BY:	DATE APR:
.XX = ± .020	APR BY:	DATE APR:
.XXX = ± .010	APR BY:	DATE APR:
ANGLES: = ± 1°		
CABINET SQUARENESS = ± .0625		



300 South Krueger Street
Suring, WI 54174
diversifiedwoodcrafts.com

CONFIDENTIAL:
ALL DESIGN RIGHTS RESERVED.
THE INFORMATION, DATA, DESIGN, AND DRAWINGS EMBODIED IN THIS DOCUMENT AND ALL REPRODUCTIONS THEREOF ARE THE EXCLUSIVE PROPERTY OF DIVERSIFIED WOODCRAFTS, INC.

TITLE:
FORWARD VISION ADA
ASSEMBLY INSTRUCTIONS

THESE DOCUMENTS ARE SUPPLIED WITH THE UNDERSTANDING THAT THEY WILL NOT BE DISCLOSED TO THIRD PARTIES WITHOUT WRITTEN CONSENT OF DIVERSIFIED WOODCRAFTS, INC. ANY REPRODUCTION IN PART OR WHOLE WITHOUT WRITTEN CONSENT IS SUBJECT TO LEGAL ACTION.

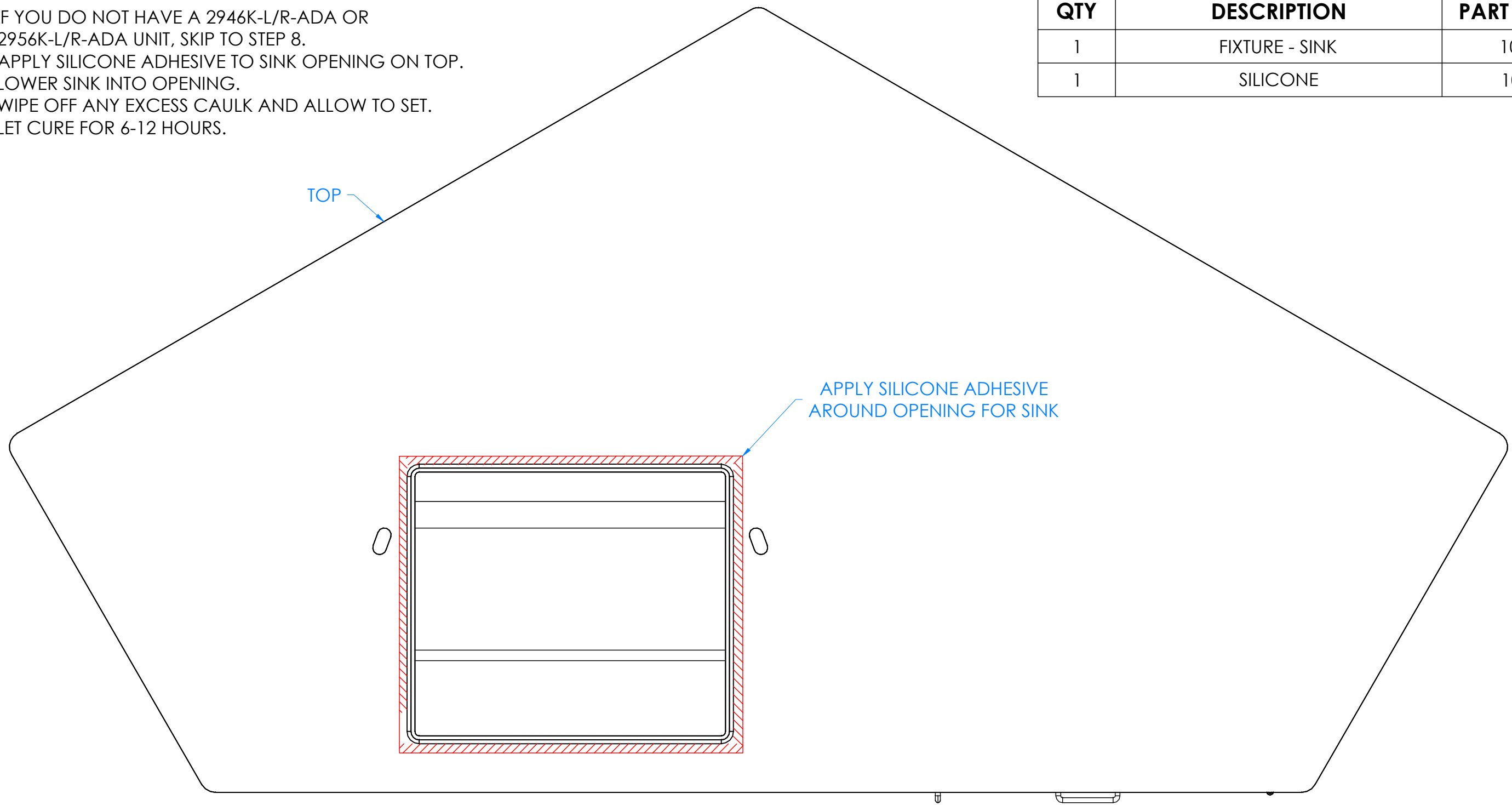
REV.	DESCRIPTION	DATE	NAME	ECN NO.
B	UPDATED SILICONE PROCEDURE	8/21/23	RJM	-
A	CREATED DRAWING	11/14/16	EMR	-
REVISION LEVEL				

DRAWING NUMBER:	SCALE:	SHEET:	REVISION:
FORWARD VISION ADA	NTS	9 OF 12	REV B

STEP 7:

- a. IF YOU DO NOT HAVE A 2946K-L/R-ADA OR 2956K-L/R-ADA UNIT, SKIP TO STEP 8.
- b. APPLY SILICONE ADHESIVE TO SINK OPENING ON TOP.
- c. LOWER SINK INTO OPENING.
- d. WIPE OFF ANY EXCESS CAULK AND ALLOW TO SET.
- e. LET CURE FOR 6-12 HOURS.

HARDWARE REQUIRED FOR STEP		
QTY	DESCRIPTION	PART NUMBER
1	FIXTURE - SINK	100690
1	SILICONE	100711



NOTE:
1.

TOP VIEW OF WORKSTATION SHOWN

ALL DIMENSIONS ARE IN INCHES UNLESS NOTED OTHERWISE	DWN BY: EMR	DATE DWN: 11/14/16
DECIMALS: .X = ± .030	APR BY:	DATE APR:
.XX = ± .020	APR BY:	DATE APR:
.XXX = ± .010	APR BY:	DATE APR:
ANGLES: = ± 1°		
CABINET SQUARENESS = ± .0625		



300 South Krueger Street
Suring, WI 54174
diversifiedwoodcrafts.com

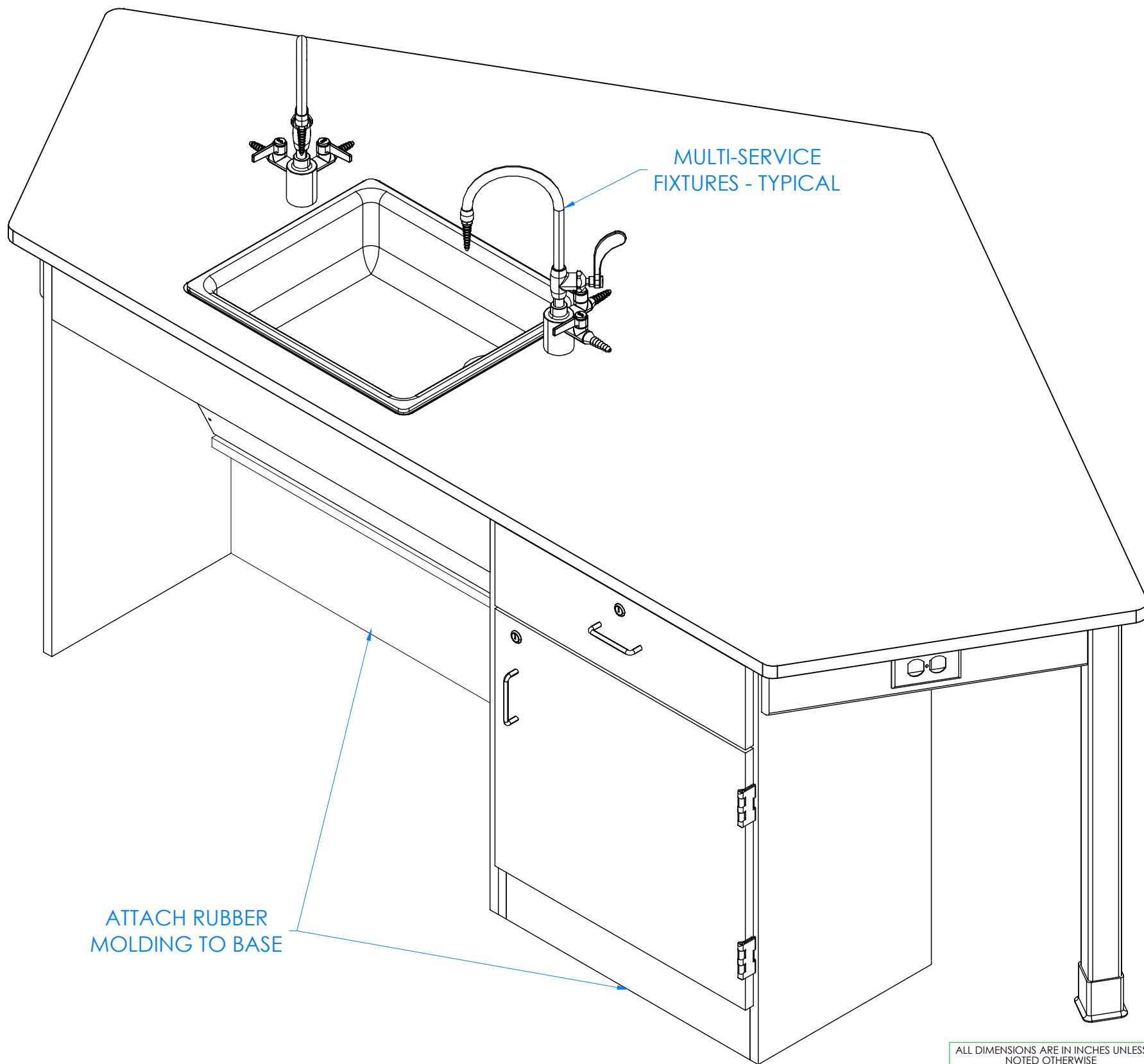
CONFIDENTIAL:
ALL DESIGN RIGHTS RESERVED.
THE INFORMATION, DATA, DESIGN, AND DRAWINGS EMBODIED IN THIS DOCUMENT AND ALL REPRODUCTIONS THEREOF ARE THE EXCLUSIVE PROPERTY OF DIVERSIFIED WOODCRAFTS, INC.

TITLE:
FORWARD VISION ADA ASSEMBLY INSTRUCTIONS

THESE DOCUMENTS ARE SUPPLIED WITH THE UNDERSTANDING THAT THEY WILL NOT BE DISCLOSED TO THIRD PARTIES WITHOUT WRITTEN CONSENT OF DIVERSIFIED WOODCRAFTS, INC. ANY REPRODUCTION IN PART OR WHOLE WITHOUT WRITTEN CONSENT IS SUBJECT TO LEGAL ACTION.

REV.	DESCRIPTION	DATE	NAME	ECN NO.
B	UPDATED SILICONE PROCEDURE	8/21/23	RJM	-
A	CREATED DRAWING	11/14/16	EMR	-
REVISION LEVEL				

DRAWING NUMBER:	SCALE:	SHEET:	REVISION:
FORWARD VISION ADA	NTS	10 OF 12	REV B



HARDWARE REQUIRED FOR STEP

QTY	DESCRIPTION	PART NUMBER
21	RUBBER BASE MOLDING	100283
10	STAINLESS STEEL CORNERS	100057
40	SCREWS - BASE	100064
2	FIXTURE - FAUCET	223575
1	FIXTURE - SINK TRAP	100056
1	FIXTURE - SINK STOPPER	100112
1	FIXTURE - STRAINER	100055

STEP 8:

- a. ATTACH RUBBER MOLDING TO BASE OF WORKSTATION USING CONTACT CEMENT.
- b. SCREW STAINLESS STEEL CORNER BRACKETS ON EACH CORNER OVER BASE MOLDING WITH HARDWARE PROVIDED.
- c. IF YOU HAVE A "K/M" SERIES UNIT, INSTALL MULTI-SERVICE FIXTURES IN THE HOLES PROVIDED ON TOP.

ATTACH RUBBER MOLDING TO BASE

COMPLETE UNIT SHOWN

NOTE:

- 1. ALL WATER, ELECTRICAL, AND GAS CONNECTIONS SHOULD BE PERFORMED BY A TRAINED PROFESSIONAL PER LOCAL CODE.

ALL DIMENSIONS ARE IN INCHES UNLESS NOTED OTHERWISE	DWN BY: EMR	DATE DWN: 11/14/16
DECIMALS: .X = ± .030	APR BY:	DATE APR:
.XX = ± .020	APR BY:	DATE APR:
.XXX = ± .010	APR BY:	DATE APR:
ANGLES: = ± 1°		
CABINET SQUARENESS = ± .0625		



300 South Krueger Street
Suring, WI 54174
diversifiedwoodcrafts.com

CONFIDENTIAL:
ALL DESIGN RIGHTS RESERVED.
THE INFORMATION, DATA, DESIGN, AND DRAWINGS EMBODIED IN THIS DOCUMENT AND ALL REPRODUCTIONS THEREOF ARE THE EXCLUSIVE PROPERTY OF DIVERSIFIED WOODCRAFTS, INC.

TITLE:
FORWARD VISION ADA
ASSEMBLY INSTRUCTIONS

THESE DOCUMENTS ARE SUPPLIED WITH THE UNDERSTANDING THAT THEY WILL NOT BE DISCLOSED TO THIRD PARTIES WITHOUT WRITTEN CONSENT OF DIVERSIFIED WOODCRAFTS, INC. ANY REPRODUCTION IN PART OR WHOLE WITHOUT WRITTEN CONSENT IS SUBJECT TO LEGAL ACTION.

REV.	DESCRIPTION	DATE	NAME	ECN NO.
B	UPDATED SILICONE PROCEDURE	8/21/23	RJM	-
A	CREATED DRAWING	11/14/16	EMR	-

DRAWING NUMBER:	SCALE:	SHEET:	REVISION:
FORWARD VISION ADA	NTS	11 OF 12	REV B

REVISION LEVEL

TROUBLESHOOTING YOUR GFCI ELECTRICAL RECEPTACLE:

PLEASE NOTE: THROUGHOUT ANY OF THE FOLLOWING STEPS (PROCEDURES); IF YOU ARE NOT SURE YOU CAN DO THIS JOB SAFELY, AND COMPETENTLY, REFER THIS WORK TO QUALIFIED PROFESSIONAL!

If your unit comes equipped with a GFCI (Ground Fault Circuit Interrupter) electrical receptacle, and there is no power in the receptacle please consider/check the following:

- The extension cord (if being used) is working properly.
- The breaker hasn't been tripped, or turned off.

This type of GFCI has two testing-related buttons on it. One button is appropriately labeled "TEST", and the other button is labeled "RESET". To test the GFCI receptacle follow these steps:

- Plug in an appliance (lamp or night light) into the outlet. The light should now be on. Then press the "TEST" button on the GFCI. The GFCI "RESET" button should pop out, and the light should go out.
- If the "RESET" button pops out, but the light doesn't go out, the GFCI has been improperly wired. In this case please contact a certified professional. There may also be a problem with other wiring in the same circuit.
- If the "RESET" button doesn't pop out, the GFCI is defective, or malfunctioned, and should be replaced.
- If the GFCI is functioning properly, and the lamp goes out, press the "RESET" button to restore power to the outlet.

Conversely, if you have a GFI that has tripped (which is common) and it will not reset, you may have a wiring short in the circuit, a defective appliance on the circuit, or the GFI itself has become defective. To test a tripping GFCI follow these steps:

- Remove every appliance connected to the GFCI's circuit and reset it. If it doesn't reset there may either be a wiring fault behind a socket outlet, or your GFCI itself has become faulty.
- Make sure whatever you are plugging into to the GFCI is dry and not damaged.
- Only plug in one item at a time. If you are plugging in a defective item it will cause the GFCI to trip, and that item therefore should be replaced.

If you are still having difficulty the easiest way to troubleshoot a GFI is to obtain a GFI tester, which is available at most hardware stores. It plugs into the GFI outlet, and will supply you with a "snapshot" of your connections, indicating wiring problems and/or the condition of the GFI. Another way to troubleshoot is to simply purchase a new GFI and install it.