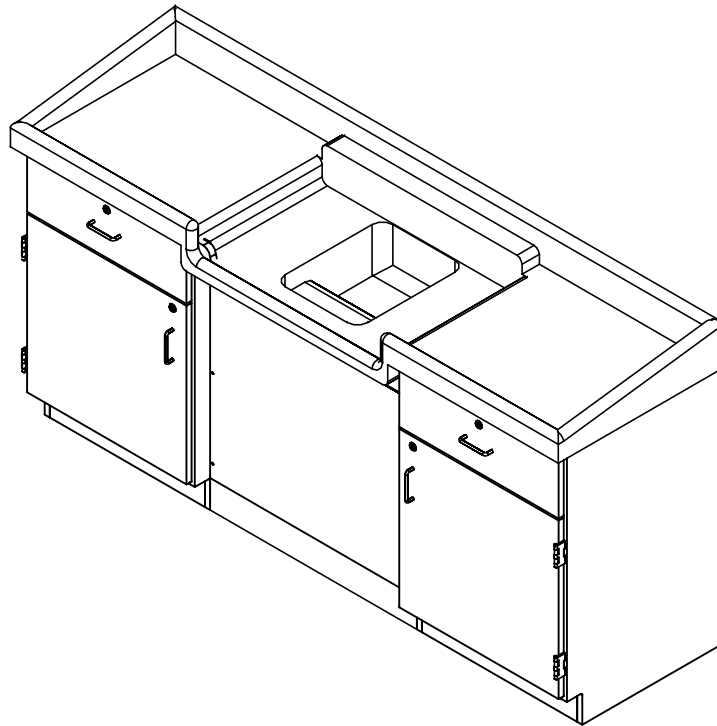


RINSE AWAY SINK

3020K & 3020K-ADA ASSEMBLY INSTRUCTIONS



NOTE:

1. MODEL VIEWS MAY NOT REPRESENT EXACT MODEL PURCHASED

DWN BY:	EMK	DWN DATE:	12/11/17
APR BY:		DATE APR:	
APR BY:		DATE APR:	

UNLESS OTHERWISE SPECIFIED
DIMENSION ARE IN INCHES

CABINET SQUARENESS ± .0625
FRACTIONAL VALUES ± 1/32"
- ALL VALUES ± OVERALL -



300 South Krueger Street
Suring, WI 54174
diversifiedwoodcrafts.com

TITLE:
**RINSE AWAY SINK
ASSEMBLY INSTRUCTIONS**

REV.	DESCRIPTION	DATE	NAME	ECN NO.
A	CREATED DRAWING	12/11/17	EMK	-
REVISION LEVEL				

THIS DRAWING IS THE SOLE PROPERTY OF
DIVERSIFIED WOOD CRAFTS. IT MAY NOT
BE ALTERED OR CHANGED WITHOUT
PERMISSION

DRAWING NUMBER:	SCALE:	SHEET:	REVISION:
3020K & 3020K-ADA	NTS	1 OF 7	REV A

TOOLS REQUIRED

CONTACT CEMENT

SCREW DRIVER

ASSEMBLY COMPONENTS

ITEMS INCLUDED	PART #	PART DESCRIPTION	QTY
TOP	253514	SINK,RINSE-AWAY,BLK,FIBERGLASS,24"X 79.50"	1
CABINET	N/A	B18 - 24"W X 22"D X (HEIGHT VARIES)	1
CABINET	N/A	B19 - 24"W X 22"D X (HEIGHT VARIES)	1
TOEKICK	N/A	0.75"THK X 4"W X 30"L	1
APRON	N/A	0.81"THK X 4.50"W X 30"L	1
BACK RAIL	N/A	0.75"THK X 4"W X 30"L	1
REMOVABLE PANEL	N/A	REMOVABLE PANEL - 0.75"THK X 30"W X 26.75"L	1
UPPER REMOVABLE PANEL	N/A	UPPER REMOVABLE PANEL - 0.75"THK X 29.94"W X 19.13"L	1
LOWER REMOVABLE PANEL	N/A	LOWER REMOVABLE PANEL - "0.75"THK X 29.94"W X 9.25"L	1
SCREWS - REMOVABLE PANELS AND TOEKICK	100495	SCREW,# 10X1-1/2 PHIL TR. SMS,ZN	VARIES
BRACKET - KNEE SPACE APRON	100355	BRACKET,RAIL 1.25X1.25X4.25	2
BRACKET - KNEE SPACE BACK RAIL	100525	BRACKET,RAIL 1.5X1.5X.125,1.885L	2
SCREWS - BRACKETS	100649	SCREW,#8X3/4 PHIL TRUSS HEAD SMS	16
TOP MOUNTING BRACKET	100728	TABLE MOUNTING L-BRACKET	6
SCREWS - TOP MOUNTING BRACKET	100111	SCREW,5/8 TRUSS HEAD	18
FAUCET	253565	DUAL VALVE DM PANTRY FAUCET W/5" GOOSENECK SPOUT	1

NOTE:

1. CABINET HEIGHTS VARY WITH STYLE OF UNIT PURCHASED.
 - 1.1. EX. 3020K = 35"H OR 3020K-ADA = 32.50"H
2. KNEE SPACE PARTS VARY WITH STYLE OF UNIT PURCHASED.
 - 2.1. EX. 3020K = WILL GET TOEKICK, APRON, AND BACK RAIL.
 - 2.2. EX. 3020K-ADA = WILL GET UPPER AND LOWER REMOVABLE PANELS.

DWN BY:	EMK	DWN DATE:	12/11/17
APR BY:		DATE APR:	
APR BY:		DATE APR:	

UNLESS OTHERWISE SPECIFIED DIMENSION ARE IN INCHES
 CABINET SQUARENESS ± .0625
 FRACTIONAL VALUES ± 1/32"
 - ALL VALUES ± OVERALL -



300 South Krueger Street
 Suring, WI 54174
 diversifiedwoodcrafts.com

TITLE:
 RINSE AWAY SINK
 TOOLS AND ASSEMBLY COMPONENTS

REV.	DESCRIPTION	DATE	NAME	ECN NO.
A	CREATED DRAWING	12/11/17	EMK	-
REVISION LEVEL				

THIS DRAWING IS THE SOLE PROPERTY OF DIVERSIFIED WOOD CRAFTS. IT MAY NOT BE ALTERED OR CHANGED WITHOUT PERMISSION

DRAWING NUMBER:	SCALE:	SHEET:	REVISION:
3020K & 3020K-ADA	NTS	2 OF 7	REV A

ASSEMBLY COMPONENTS

ITEMS INCLUDED	PART #	PART DESCRIPTION	QTY
RUBBER BASE MOLDING	100283	RUBBER BASE MOLDING (SOLD BY FOOT)	VARIABLES
STAINLESS STEEL CORNERS	100057	CORNERS-STAINLESS STEEL,BASE	VARIABLES
SCREWS - BASE	100064	SCREW,#6X½ PTH SMS SS SCREW	VARIABLES
SHELF CLIPS	100027	SHELF CLIPS,PLASTIC,5MM PIN	8

NOTE:

1. CABINET HEIGHTS VARY WITH STYLE OF UNIT PURCHASED.
 - 1.1. EX. 3020K = 35"H OR 3020K-ADA = 32.50"H
2. KNEE SPACE PARTS VARY WITH STYLE OF UNIT PURCHASED.
 - 2.1. EX. 3020K = WILL GET TOEKICK, APRON, AND BACK RAIL.
 - 2.2. EX. 3020K-ADA = WILL GET UPPER AND LOWER REMOVABLE PANELS.

DWN BY:	EMK	DWN DATE:	12/11/17
APR BY:		DATE APR:	
APR BY:		DATE APR:	

UNLESS OTHERWISE SPECIFIED
DIMENSION ARE IN INCHES

CABINET SQUARENESS ± .0625
FRACTIONAL VALUES ± 1/32"
- ALL VALUES ± OVERALL -



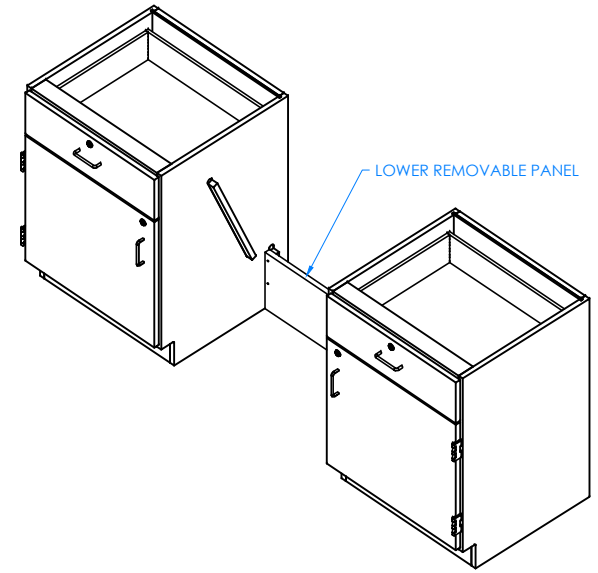
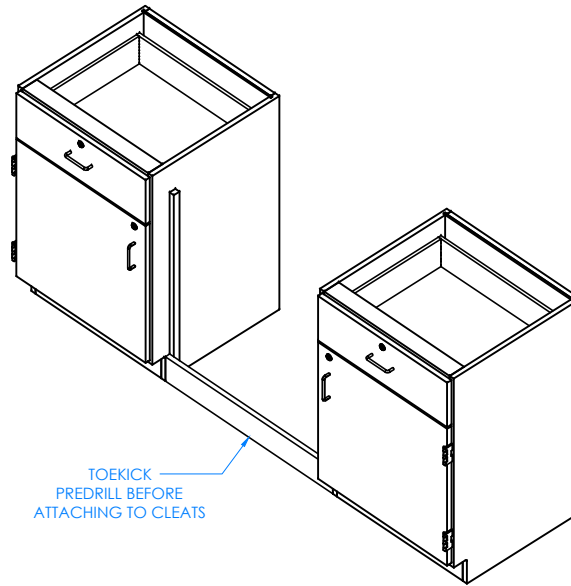
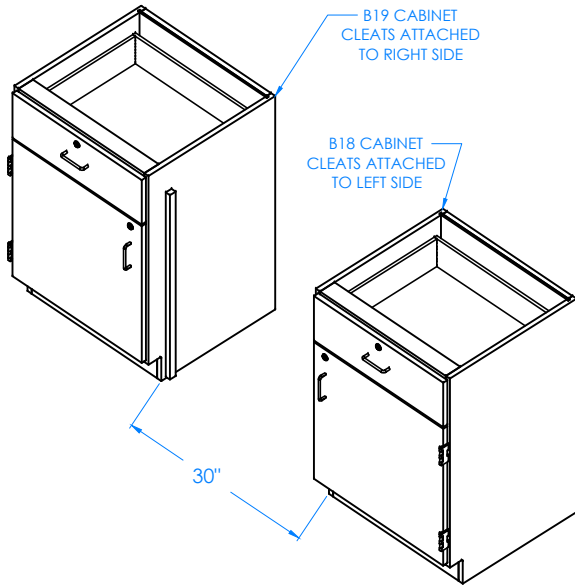
300 South Krueger Street
Suring, WI 54174
diversifiedwoodcrafts.com

TITLE:
RINSE AWAY SINK
TOOLS AND ASSEMBLY COMPONENTS

A	CREATED DRAWING	12/11/17	EMK	-
REV.	DESCRIPTION	DATE	NAME	ECN NO.

THIS DRAWING IS THE SOLE PROPERTY OF
DIVERSIFIED WOOD CRAFTS. IT MAY NOT
BE ALTERED OR CHANGED WITHOUT
PERMISSION

DRAWING NUMBER:	SCALE:	SHEET:	REVISION:
3020K & 3020K-ADA	NTS	3 OF 7	REV A



3020K UNIT SHOWN

3020K-ADA UNIT SHOWN

STEP 1:

PLACE THE TWO CABINETS AGAINST THE WALL. CLEATS SHOULD BE FACING EACH OTHER. LEAVE ENOUGH ROOM IN BETWEEN CABINETS FOR REMOVABLE PANELS, APRONS, AND BACK RAIL. LEVEL CABINETS AND ATTACH TO FLOOR.

STEP 2:

IF YOU HAVE A 3020K, ATTACH TOEKICK ONTO THE CLEATS WITH THE SCREWS PROVIDED. MAKE SURE BOTTOM EDGE OF TOEKICK IS FLUSH WITH BOTTOM EDGE OF CABINETS. IF YOU HAVE A 3020K-ADA, ATTACH THE LOWER REMOVABLE PANEL ONTO THE SMALLER CLEATS LOCATED ON THE BACK OF THE CABINETS WITH THE SCREWS PROVIDED. PRE-DRILL HOLES IN TOEKICK AND CLEATS TO PREVENT CRACKING.

NOTE:

- 1.

DWN BY:	EMK	DWN DATE:	12/11/17
APR BY:		DATE APR:	
APR BY:		DATE APR:	

UNLESS OTHERWISE SPECIFIED DIMENSION ARE IN INCHES
 CABINET SQUARENESS ± .0625
 FRACTIONAL VALUES ± 1/32"
 - ALL VALUES ± OVERALL -



300 South Krueger Street
 Suring, WI 54174
 diversifiedwoodcrafts.com

TITLE:
**RINSE AWAY SINK
 ASSEMBLY INSTRUCTIONS**

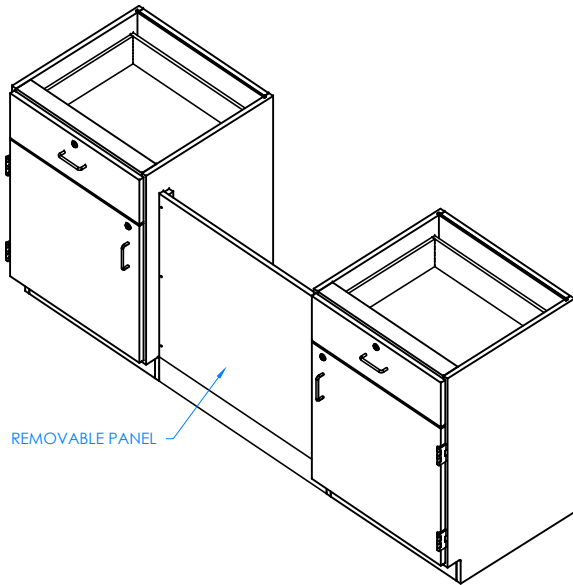
REV.	DESCRIPTION	DATE	NAME	ECN NO.
A	CREATED DRAWING	12/11/17	EMK	-
REVISION LEVEL				

THIS DRAWING IS THE SOLE PROPERTY OF DIVERSIFIED WOOD CRAFTS. IT MAY NOT BE ALTERED OR CHANGED WITHOUT PERMISSION

DRAWING NUMBER:

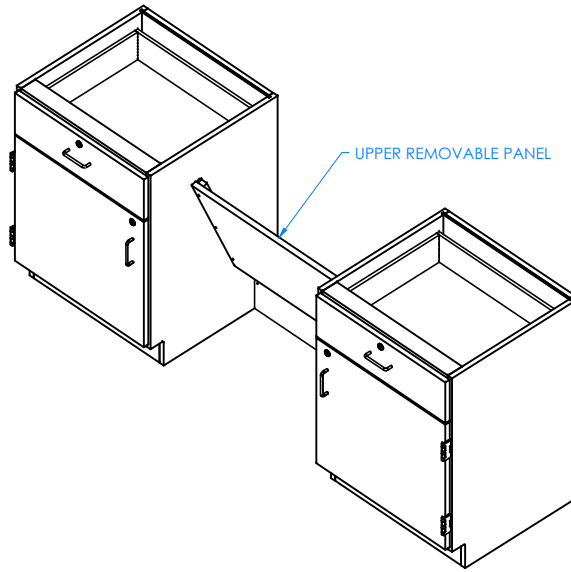
3020K & 3020K-ADA

SCALE:	SHEET:	REVISION:
NTS	4 OF 7	REV A



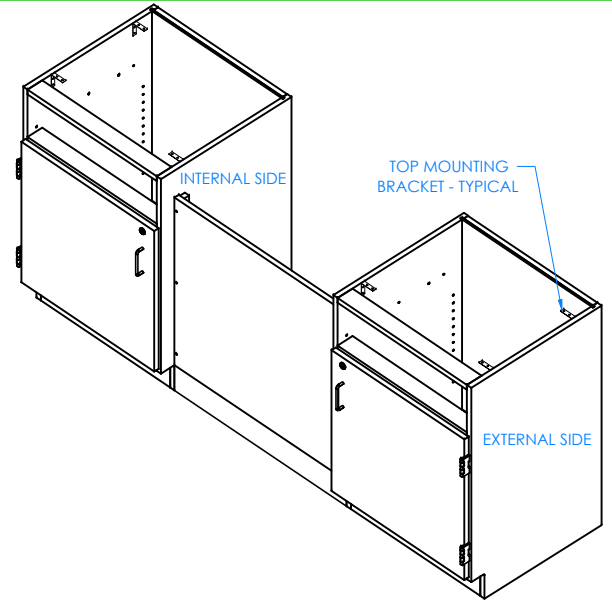
REMOVABLE PANEL

3020K UNIT SHOWN



UPPER REMOVABLE PANEL

3020K-ADA UNIT SHOWN



INTERNAL SIDE

TOP MOUNTING BRACKET - TYPICAL

EXTERNAL SIDE

STEP 4:

REMOVE THE DRAWER BOXES AND ATTACH TOP MOUNTING BRACKETS TO THE SIDES OF THE CABINETS WITH THE SCREWS PROVIDED. THERE SHOULD BE THREE IN EACH CABINET (TWO ON THE EXTERNAL SIDES AND ONE ON THE INTERNAL SIDES).

STEP 3:

IF YOU HAVE A 3020K, ATTACH REMOVABLE PANEL ONTO CLEATS WITH THE SCREWS PROVIDED. IF YOU HAVE A 3020K-ADA, ATTACHED UPPER REMOVABLE PANEL ONTO THE ANGLED CLEATS WITH THE REMAINING SCREWS PROVIDED. PRE-DRILL HOLES IN CLEATS TO PREVENT CRACKING.

NOTE:

- 1.

DWN BY:	EMK	DWN DATE:	12/11/17
APR BY:		DATE APR:	
APR BY:		DATE APR:	



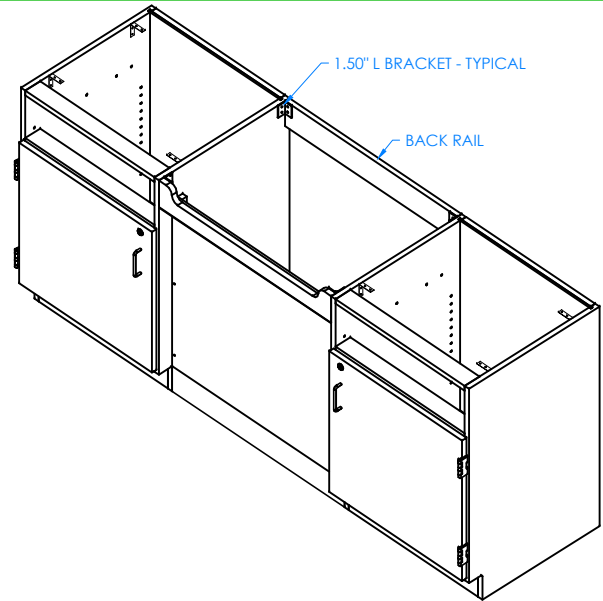
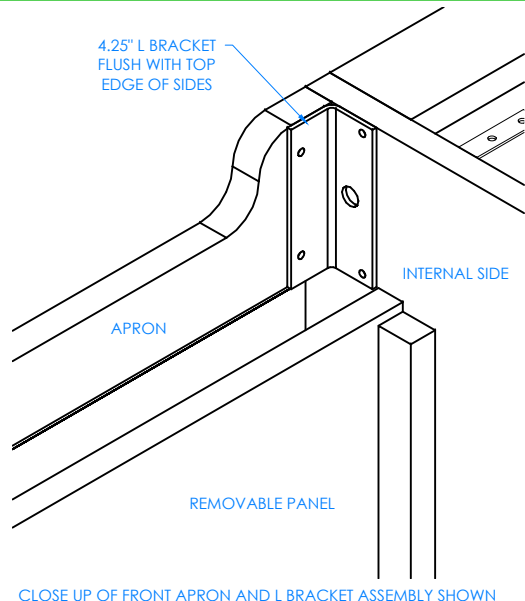
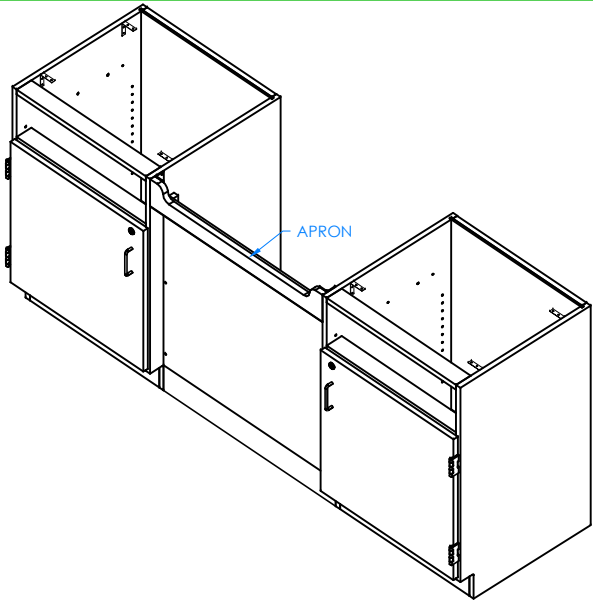
300 South Krueger Street
Suring, WI 54174
diversifiedwoodcrafts.com

UNLESS OTHERWISE SPECIFIED
DIMENSION ARE IN INCHES
CABINET SQUARENESS ± .0625
FRACTIONAL VALUES ± 1/32"
- ALL VALUES ± OVERALL -
THIS DRAWING IS THE SOLE PROPERTY OF
DIVERSIFIED WOOD CRAFTS. IT MAY NOT
BE ALTERED OR CHANGED WITHOUT
PERMISSION

TITLE:
RINSE AWAY SINK
ASSEMBLY INSTRUCTIONS

REVISION LEVEL	DESCRIPTION	DATE	NAME	ECN NO.
A	CREATED DRAWING	12/11/17	EMK	-

DRAWING NUMBER:	SCALE:	SHEET:	REVISION:
3020K & 3020K-ADA	NTS	5 OF 7	REV A



STEP 5:

POSITION APRON IN BETWEEN EACH CABINET. MAKING SURE FRONT EDGE IS FLUSH WITH THE FRONT EDGE OF SIDES AND TOP EDGE IS FLUSH WITH TOP EDGE OF SIDES. WITH HELP FROM ANOTHER PERSON, ATTACH THE 4.25" L BRACKET ONTO THE APRON AND INTERNAL SIDES WITH THE SCREWS PROVIDED. MAKE SURE BRACKET IS FLUSH WITH TOP EDGE OF CABINETS.

STEP 6:

REPEAT STEP 5 FOR THE BACK RAIL BUT USE THE 1.50" BRACKET INSTEAD. MAKE SURE BACK RAIL IS FLUSH WITH BACK EDGE AND TOP EDGE OF SIDES AND THE BRACKET IS FLUSH WITH TOP EDGE OF SIDES.

NOTE:

- 1.

DWN BY:	EMK	DWN DATE:	12/11/17
APR BY:		DATE APR:	
APR BY:		DATE APR:	

UNLESS OTHERWISE SPECIFIED DIMENSION ARE IN INCHES

CABINET SQUARENESS ± .0625
 FRACTIONAL VALUES ± 1/32"
 - ALL VALUES ± OVERALL -



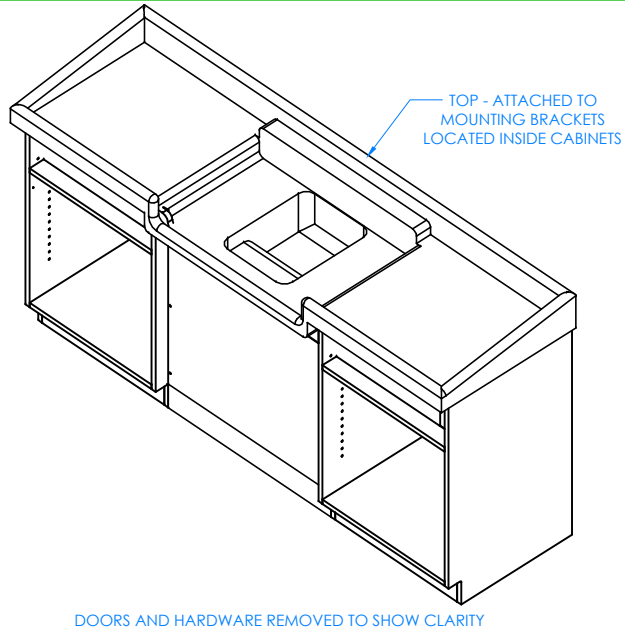
300 South Krueger Street
 Suring, WI 54174
 diversifiedwoodcrafts.com

TITLE:
**RINSE AWAY SINK
 ASSEMBLY INSTRUCTIONS**

REV.	DESCRIPTION	DATE	NAME	ECN NO.
A	CREATED DRAWING	12/11/17	EMK	-
REVISION LEVEL				

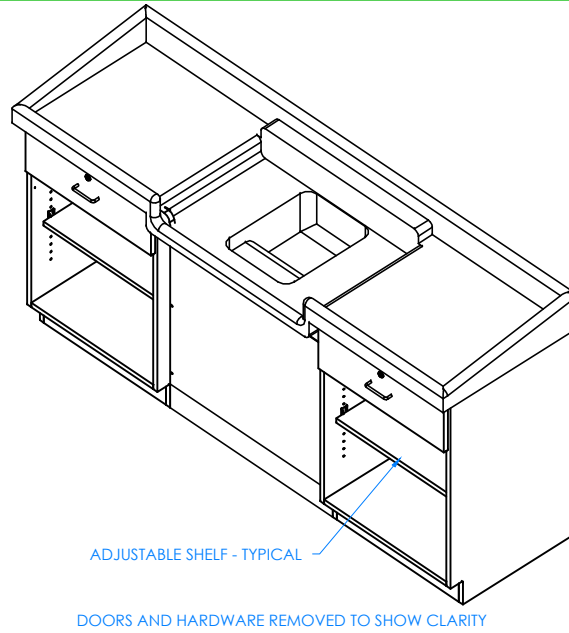
THIS DRAWING IS THE SOLE PROPERTY OF DIVERSIFIED WOOD CRAFTS. IT MAY NOT BE ALTERED OR CHANGED WITHOUT PERMISSION

DRAWING NUMBER:	SCALE:	SHEET:	REVISION:
3020K & 3020K-ADA	NTS	6 OF 7	REV A



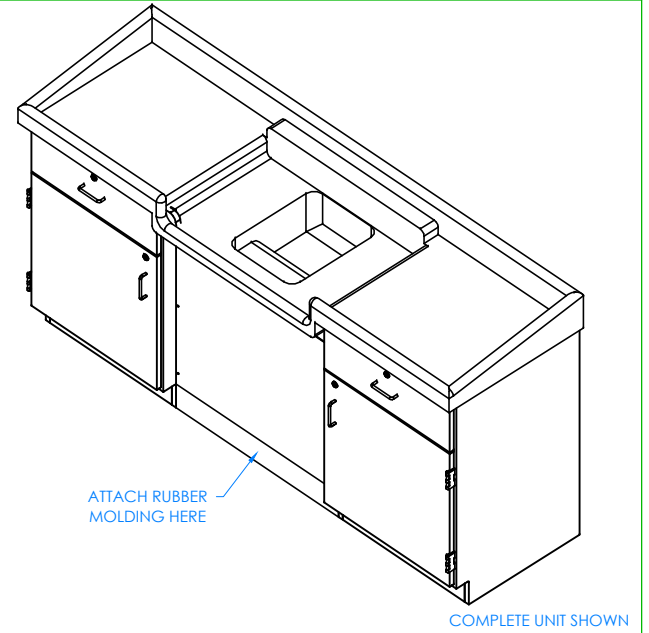
STEP 7:

WITH HELP FROM ANOTHER PERSON, PLACE THE TOP ONTO CABINETS WITH THE PROPER OVERHANG (CENTERED ON UNIT). FROM INSIDE THE CABINETS, ATTACH TOP TO TOP MOUNTING BRACKETS WITH THE SCREWS PROVIDED.



STEP 8:

PLACE TOP DRAWERS BACK INTO CABINET. INSERT SHELF CLIPS IN DESIRED LOCATION. PLACE SHELVES ON CLIPS, MAKING SURE THEY ARE LEVEL.



STEP 9:

ATTACH RUBBER MOLDING TO BASE OF UNIT USING CONTACT CEMENT. AFTER MOLDING IS IN PLACE, SCREW STAINLESS STEEL CORNER BRACKETS ONTO EACH CORNER OVER BASE MOLDING WITH THE SCREWS PROVIDED. INSTALL FAUCET TO TOP (NOT SHOWN).

NOTE:

1. ALL PLUMBING NEEDS TO BE DONE BY A LICENSED PLUMBER PER LOCAL CODE.

DWN BY:	EMK	DWN DATE:	12/11/17
APR BY:		DATE APR:	
APR BY:		DATE APR:	

UNLESS OTHERWISE SPECIFIED DIMENSION ARE IN INCHES
 CABINET SQUARENESS ± .0625
 FRACTIONAL VALUES ± 1/32"
 - ALL VALUES ± OVERALL -



300 South Krueger Street
 Suring, WI 54174
 diversifiedwoodcrafts.com

TITLE:
**RINSE AWAY SINK
 ASSEMBLY INSTRUCTIONS**

REV.	DESCRIPTION	DATE	NAME	ECN NO.
A	CREATED DRAWING	12/11/17	EMK	-
REVISION LEVEL				

THIS DRAWING IS THE SOLE PROPERTY OF DIVERSIFIED WOOD CRAFTS. IT MAY NOT BE ALTERED OR CHANGED WITHOUT PERMISSION

DRAWING NUMBER:	SCALE:	SHEET:	REVISION:
3020K & 3020K-ADA	NTS	7 OF 7	REV A