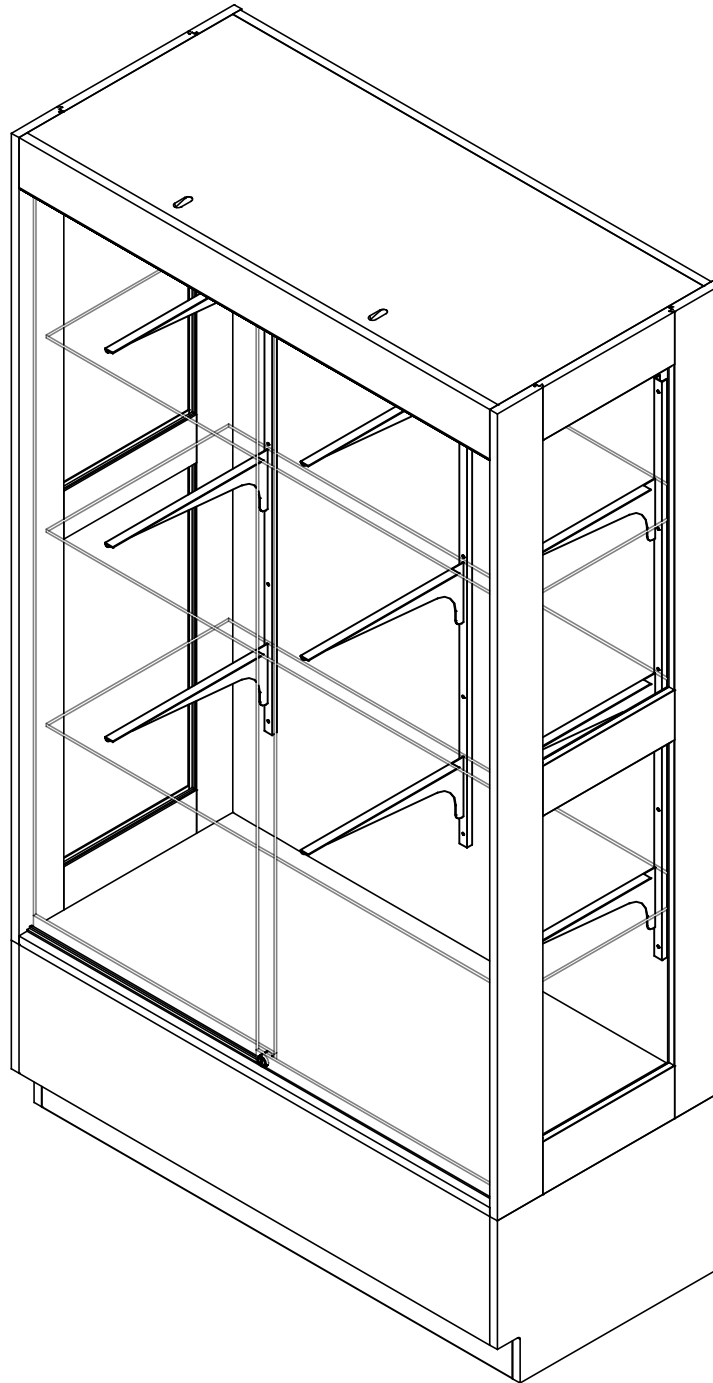


DISPLAY CABINET

380-4822 (OAK OR MAPLE)
ASSEMBLY INSTRUCTIONS



NOTE:

1. MODEL VIEWS MAY NOT REPRESENT EXACT MODEL PURCHASED.

ALL DIMENSIONS ARE IN INCHES UNLESS NOTED OTHERWISE	DWN BY:	EMR	DATE DWN:	5/19/21
DECIMALS: X = ± .030	APR BY:		DATE APR:	
XX = ± .020	APR BY:		DATE APR:	
XXX = ± .010	APR BY:		DATE APR:	
ANGLES: ± 1°				
CABINET SQUARENESS: ± .0625				

CONFIDENTIAL:
ALL DESIGN RIGHTS RESERVED
THE INFORMATION, DATA, DESIGN, AND DRAWINGS EMBODIED IN THIS DOCUMENT AND ALL REPRODUCTIONS THEREOF ARE THE EXCLUSIVE PROPERTY OF DIVERSIFIED WOODCRAFTS, INC.



300 South Krueger Street
Suring, WI 54174
diversifiedwoodcrafts.com

TITLE:
PREMIER DISPLAY CABINET
ASSEMBLY INSTRUCTIONS

REV.	DESCRIPTION	DATE	NAME	ECN No.
C	ADDED LAST SHEET WITH LOCK HOLE DETAILS	08/08/2023	JCF	N/A
B	LIGHT BAR AND POWER CORD UPDATED	7/28/23	RJM	1398
A	CREATED DRAWING	5/19/21	EMR	N/A

THESE DOCUMENTS ARE SUPPLIED WITH THE UNDERSTANDING THAT THEY WILL NOT BE DISCLOSED TO THIRD PARTIES WITHOUT WRITTEN CONSENT OF DIVERSIFIED WOODCRAFTS, INC. ANY REPRODUCTION IN PART OR WHOLE WITHOUT WRITTEN CONSENT IS SUBJECT TO LEGAL ACTION.

DRAWING NUMBER:	SCALE:	SHEET:	REVISION:
380-4822	NTS	1 OF 14	REV C

TOOLS REQUIRED

CONTACT CEMENT

SCREW DRIVER

ASSEMBLY COMPONENTS

ITEMS INCLUDED	PART #	PART DESCRIPTION	QTY
GLASS DOOR	244856DWI	DOOR,ASSYGLASS,SLIDING,46.5WX67.25 H	1
GLASS SHELF	247057	GLASS,SHELF,TEMP,.25X18.00X46.312	3
RUBBER GROMMETS	247071	GROMMETS,RUBBER,PUSH IN,1/4"ID	27
LIGHT BAR	258624	LIGHT BAR,LED,36 INCH	1
POWER CORD	258781	POWER CORD,LED LIGHT BAR	1
SHELF BRACKET	100124-16	SHELF BRACKET,LEFT HAND-16	9
SHELF STANDARDS	100920	SHELF STANDARD,KV0083 ANO 48	3
CORNER	100057	CORNER,STAINLESS STEEL,BASE	2
CORNER - SCREWS	100064	SCREW,#6 X 1/2"	8
SHELF STANDARD - SCREWS	100484	SCREW,#8 X 1"	15
RUBBER BASE MOLDING	100283	RUBBER BASE MOLDING (SOLD BY FOOT)	7.66
BASE - SCREWS	236355	SCREW,#8 X 2"	6

NOTE:

1.

REV.	DESCRIPTION	DATE	NAME	ECN No.
C	ADDED LAST SHEET WITH LOCK HOLE DETAILS	08/08/2023	JCF	N/A
B	LIGHT BAR AND POWER CORD UPDATED	7/28/23	RJM	1398
A	CREATED DRAWING	5/19/21	EMR	N/A
REVISION LEVEL				

ALL DIMENSIONS ARE IN INCHES UNLESS NOTED OTHERWISE
 DECIMALS: .X = ± .030
 .XX = ± .020
 .XXX = ± .010
 ANGLES: = ± 1°
 CABINET SQUARENESS = ± .0625

DWN BY:	EMR	DATE DWN:	4/25/13
APR BY:		DATE APR:	
APR BY:		DATE APR:	

CONFIDENTIAL:
 ALL DESIGN RIGHTS RESERVED
 THE INFORMATION, DATA, DESIGN, AND DRAWINGS EMBODIED IN THIS DOCUMENT AND ALL REPRODUCTIONS THEREOF ARE THE EXCLUSIVE PROPERTY OF DIVERSIFIED WOODCRAFTS, INC.

THESE DOCUMENTS ARE SUPPLIED WITH THE UNDERSTANDING THAT THEY WILL NOT BE DISCLOSED TO THIRD PARTIES WITHOUT WRITTEN CONSENT OF DIVERSIFIED WOODCRAFTS, INC. ANY REPRODUCTION IN PART OR WHOLE WITHOUT WRITTEN CONSENT IS SUBJECT TO LEGAL ACTION.



300 South Krueger Street
 Suring, WI 54174
 diversifiedwoodcrafts.com

TITLE:
PREMIER DISPLAY CABINET TOOLS AND ASSEMBLY COMPONENTS

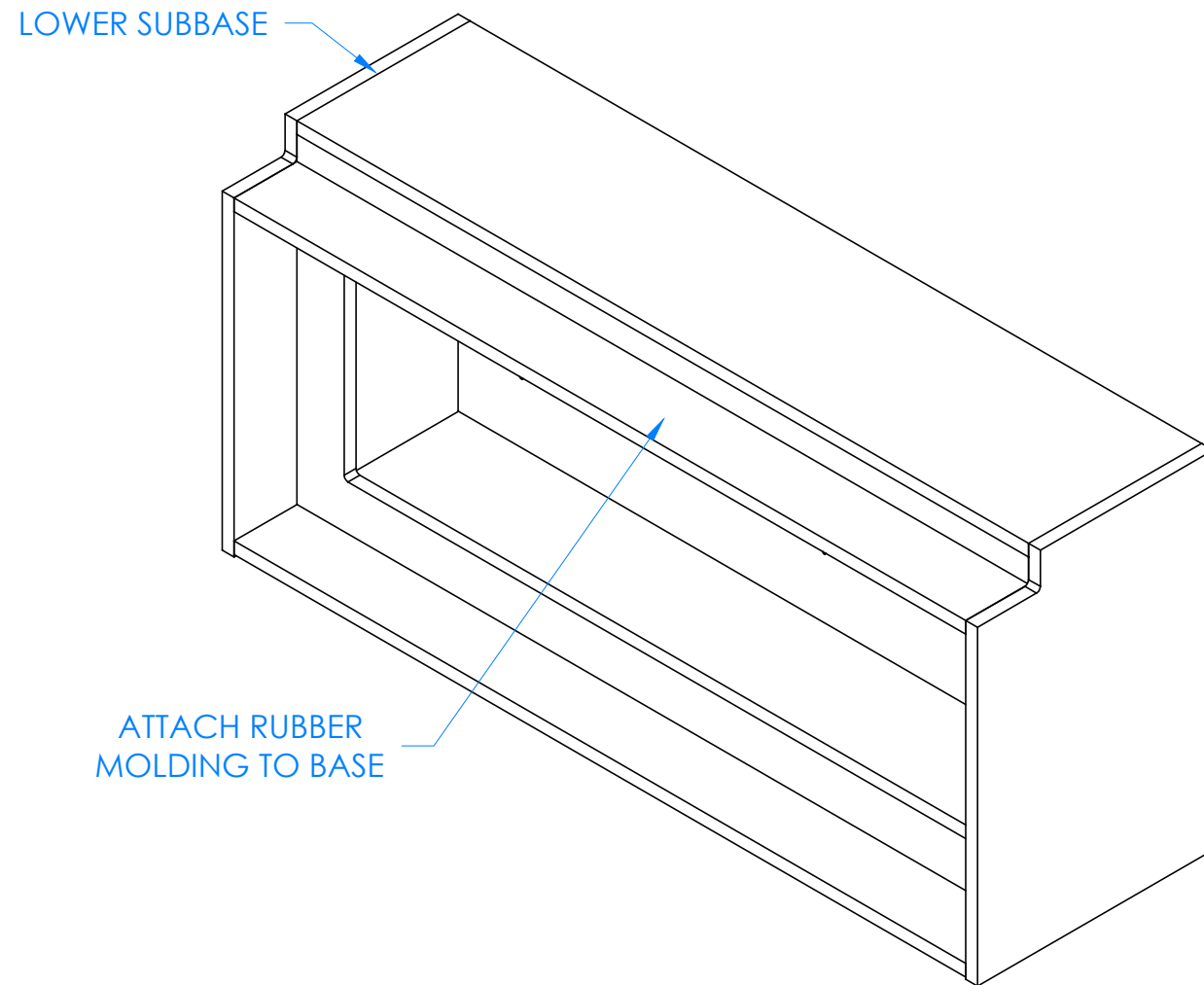
DRAWING NUMBER:	SCALE:	SHEET:	REVISION:
380-4822	NTS	2 OF 14	REV C

HARDWARE REQUIRED FOR STEP

QTY	DESCRIPTION	PART NUMBER
2	CORNER	100057
8	CORNER - SCREWS	100064

STEP 1:

- a. ATTACH RUBBER MOLDING TO BASE OF LOWER SUBBASE.
- b. SCREW STAINLESS STEEL CORNER BRACKETS ON EACH CORNER OVER BASE MOLDING USING PROVIDED HARDWARE LISTED ABOVE.



NOTE:

1.

ALL DIMENSIONS ARE IN INCHES UNLESS NOTED OTHERWISE DECIMALS: .X = ± .030 .XX = ± .020 .XXX = ± .010 ANGLES: = ± 1° CABINET SQUARENESS = ± .0625	DWN BY:	EMR	DATE DWN:	4/25/13
	APR BY:		DATE APR:	
	APR BY:		DATE APR:	
	APR BY:		DATE APR:	



300 South Krueger Street
Suring, WI 54174
diversifiedwoodcrafts.com

CONFIDENTIAL:
ALL DESIGN RIGHTS RESERVED
THE INFORMATION, DATA, DESIGN, AND DRAWINGS EMBODIED IN THIS DOCUMENT AND ALL REPRODUCTIONS THEREOF ARE THE EXCLUSIVE PROPERTY OF DIVERSIFIED WOODCRAFTS, INC.

TITLE:
**PREMIER DISPLAY CABINET
ASSEMBLY INSTRUCTIONS**

REV.	DESCRIPTION	DATE	NAME	ECN No.
C	ADDED LAST SHEET WITH LOCK HOLE DETAILS	08/08/2023	JCF	N/A
B	LIGHT BAR AND POWER CORD UPDATED	7/28/23	RJM	1398
A	CREATED DRAWING	5/19/21	EMR	N/A
REVISION LEVEL				

THESE DOCUMENTS ARE SUPPLIED WITH THE UNDERSTANDING THAT THEY WILL NOT BE DISCLOSED TO THIRD PARTIES WITHOUT WRITTEN CONSENT OF DIVERSIFIED WOODCRAFTS, INC. ANY REPRODUCTION IN PART OR WHOLE WITHOUT WRITTEN CONSENT IS SUBJECT TO LEGAL ACTION.

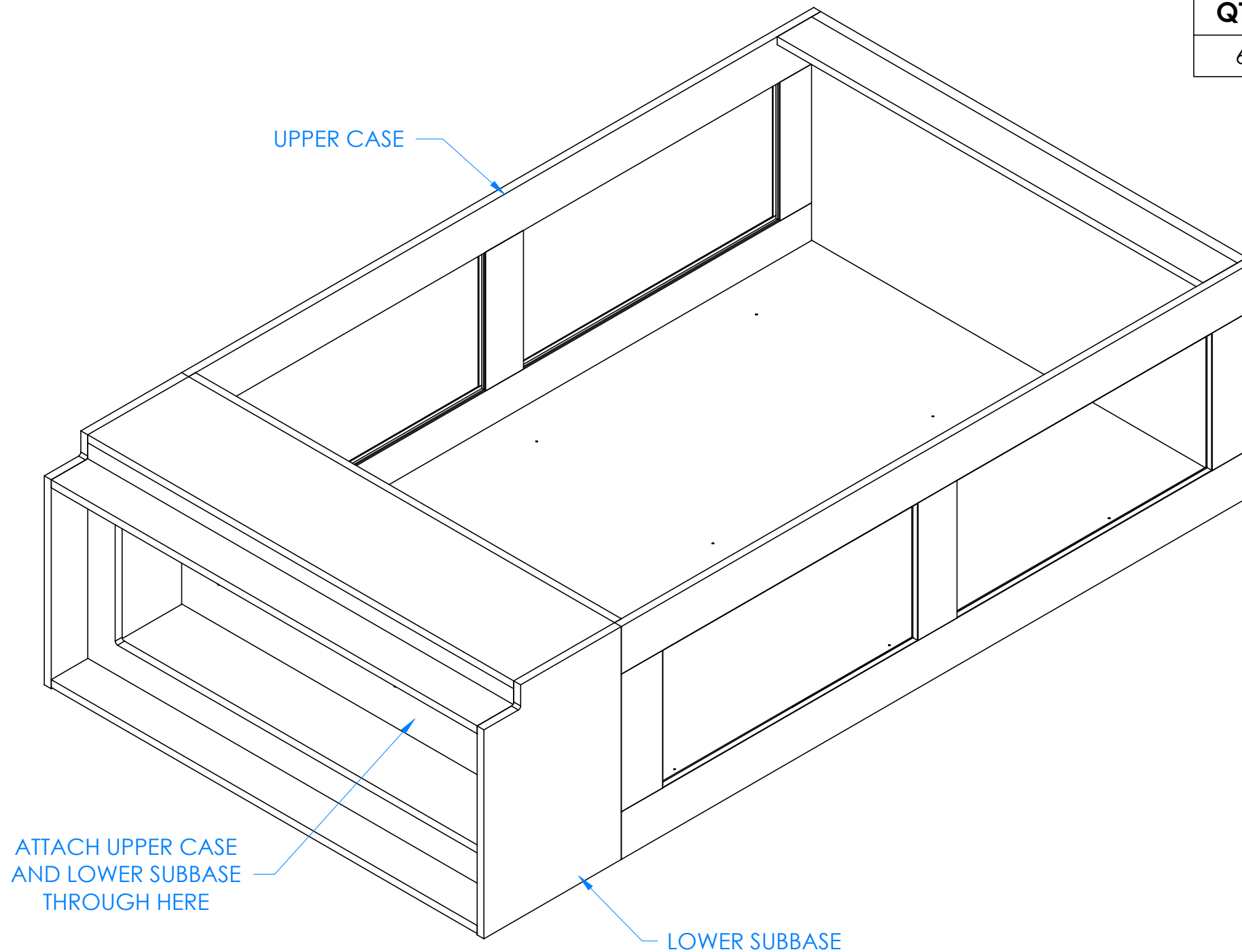
DRAWING NUMBER:	SCALE:	SHEET:	REVISION:
380-4822	NTS	3 OF 14	REV C

HARDWARE REQUIRED FOR STEP

QTY	DESCRIPTION	PART NUMBER
6	BASE - SCREWS	236355

STEP 2:

- a. ATTACH LOWER SUBBASE TO UPPER CASE WITH HARDWARE PROVIDED.



NOTE:

1.

ALL DIMENSIONS ARE IN INCHES UNLESS NOTED OTHERWISE DECIMALS: .X = ± .030 .XX = ± .020 .XXX = ± .010 ANGLES: = ± 1° CABINET SQUARENESS = ± .0625	DWN BY:	EMR	DATE DWN:	4/25/13
	APR BY:		DATE APR:	
	APR BY:		DATE APR:	
	APR BY:		DATE APR:	

300 South Krueger Street
Suring, WI 54174
diversifiedwoodcrafts.com

CONFIDENTIAL:
ALL DESIGN RIGHTS RESERVED
THE INFORMATION, DATA, DESIGN, AND DRAWINGS EMBODIED IN THIS DOCUMENT AND ALL REPRODUCTIONS THEREOF ARE THE EXCLUSIVE PROPERTY OF DIVERSIFIED WOODCRAFTS, INC.

TITLE:
PREMIER DISPLAY CABINET ASSEMBLY INSTRUCTIONS

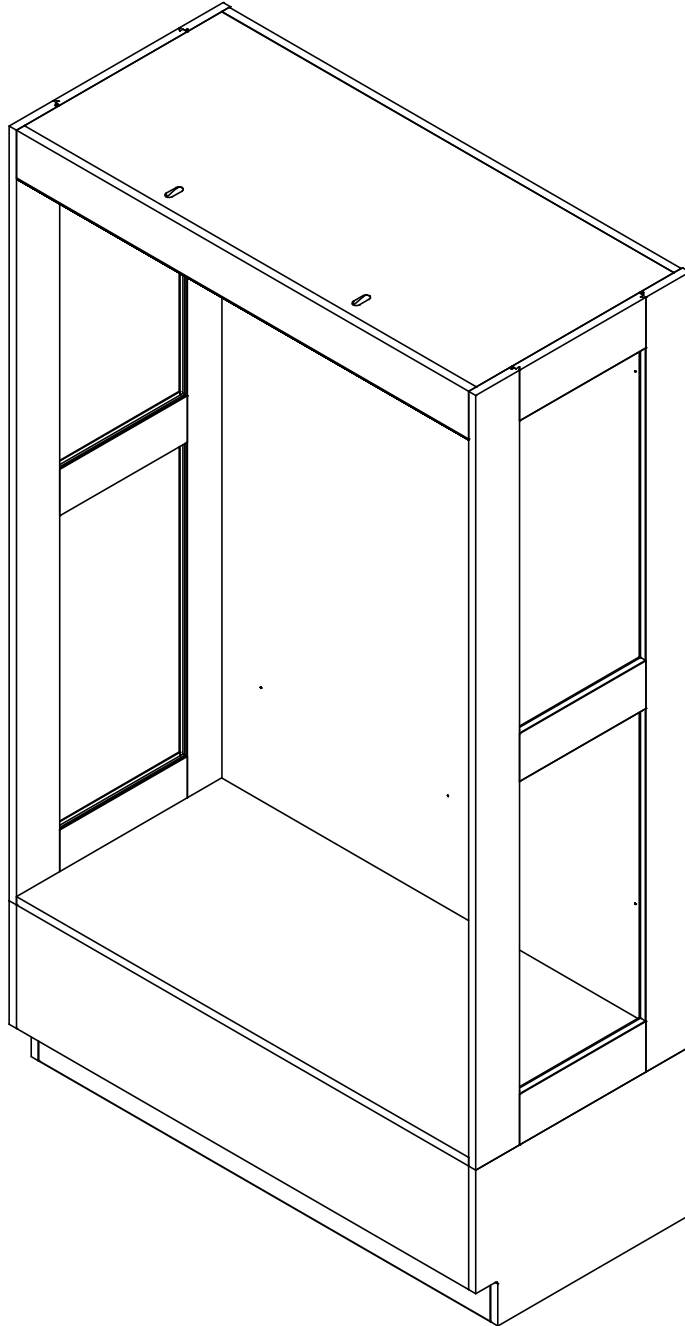
REV.	DESCRIPTION	DATE	NAME	ECN No.
C	ADDED LAST SHEET WITH LOCK HOLE DETAILS	08/08/2023	JCF	N/A
B	LIGHT BAR AND POWER CORD UPDATED	7/28/23	RJM	1398
A	CREATED DRAWING	5/19/21	EMR	N/A
REVISION LEVEL				

THESE DOCUMENTS ARE SUPPLIED WITH THE UNDERSTANDING THAT THEY WILL NOT BE DISCLOSED TO THIRD PARTIES WITHOUT WRITTEN CONSENT OF DIVERSIFIED WOODCRAFTS, INC. ANY REPRODUCTION IN PART OR WHOLE WITHOUT WRITTEN CONSENT IS SUBJECT TO LEGAL ACTION.

DRAWING NUMBER:	SCALE:	SHEET:	REVISION:
380-4822	NTS	4 OF 14	REV C

STEP 3:

- a. WITH HELP FROM ANOTHER PERSON, CAREFULLY TIP UPRIGHT.
- b. LEVEL CABINET.
- c. SECURE TO WALL.



****NOTE****
 CABINET MUST BE LEVELED OR
 DOORS AND DRAWERS MAY
 NOT OPEN OR CLOSE
 CORRECTLY

NOTE:

1.

ALL DIMENSIONS ARE IN INCHES UNLESS NOTED OTHERWISE	DWN BY:	EMR	DATE DWN:	5/19/21
DECIMALS: X = ± .030	APR BY:		DATE APR:	
XX = ± .020	APR BY:		DATE APR:	
XXX = ± .010	APR BY:		DATE APR:	
ANGLES: ± 1°				
CABINET SQUARENESS: ± .0625				



300 South Krueger Street
 Suring, WI 54174
 diversifiedwoodcrafts.com

CONFIDENTIAL:
 ALL DESIGN RIGHTS RESERVED
 THE INFORMATION, DATA, DESIGN, AND DRAWINGS EMBODIED
 IN THIS DOCUMENT AND ALL REPRODUCTIONS THEREOF ARE
 THE EXCLUSIVE PROPERTY OF DIVERSIFIED WOODCRAFTS, INC.

TITLE:
 PREMIER DISPLAY CABINET
 ASSEMBLY INSTRUCTIONS

REV.	DESCRIPTION	DATE	NAME	ECN No.
C	ADDED LAST SHEET WITH LOCK HOLE DETAILS	08/08/2023	JCF	N/A
B	LIGHT BAR AND POWER CORD UPDATED	7/28/23	RJM	1398
A	CREATED DRAWING	5/19/21	EMR	N/A
REV.	DESCRIPTION	DATE	NAME	ECN No.
REVISION LEVEL				

THESE DOCUMENTS ARE SUPPLIED WITH THE UNDERSTANDING
 THAT THEY WILL NOT BE DISCLOSED TO THIRD PARTIES WITHOUT
 WRITTEN CONSENT OF DIVERSIFIED WOODCRAFTS, INC. ANY
 REPRODUCTION IN PART OR WHOLE WITHOUT WRITTEN
 CONSENT IS SUBJECT TO LEGAL ACTION.

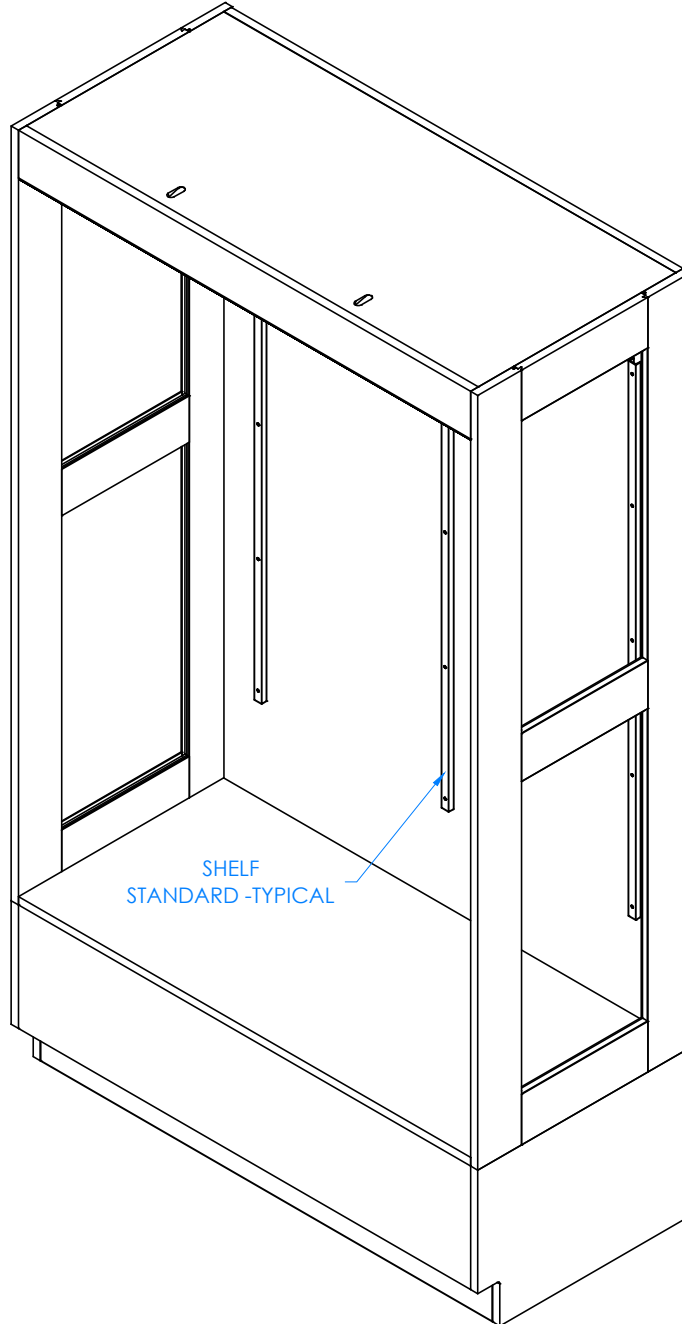
DRAWING NUMBER:	SCALE:	SHEET:	REVISION:
380-4822	NTS	5 OF 14	REV C

HARDWARE REQUIRED FOR STEP

QTY	DESCRIPTION	PART NUMBER
15	SHELF STANDARD - SCREWS	100484

STEP 4:

- a. ATTACH SHELF STANDARDS TO BACK OF CABINET USING PROVIDED HARDWARE LISTED ABOVE.



NOTE:

1.

ALL DIMENSIONS ARE IN INCHES UNLESS NOTED OTHERWISE DECIMALS: X = ± .030 XX = ± .020 XXX = ± .010 ANGLES: ± 1° CABINET SQUARENESS: ± .0625	DWN BY: EMR APR BY: APR BY:	DATE DWN: 5/19/21 DATE APR: DATE APR:
---	-----------------------------------	---

CONFIDENTIAL:
ALL DESIGN RIGHTS RESERVED
THE INFORMATION, DATA, DESIGN, AND DRAWINGS EMBODIED IN THIS DOCUMENT AND ALL REPRODUCTIONS THEREOF ARE THE EXCLUSIVE PROPERTY OF DIVERSIFIED WOODCRAFTS, INC.

THESE DOCUMENTS ARE SUPPLIED WITH THE UNDERSTANDING THAT THEY WILL NOT BE DISCLOSED TO THIRD PARTIES WITHOUT WRITTEN CONSENT OF DIVERSIFIED WOODCRAFTS, INC. ANY REPRODUCTION IN PART OR WHOLE WITHOUT WRITTEN CONSENT IS SUBJECT TO LEGAL ACTION.



300 South Krueger Street
Suring, WI 54174
diversifiedwoodcrafts.com

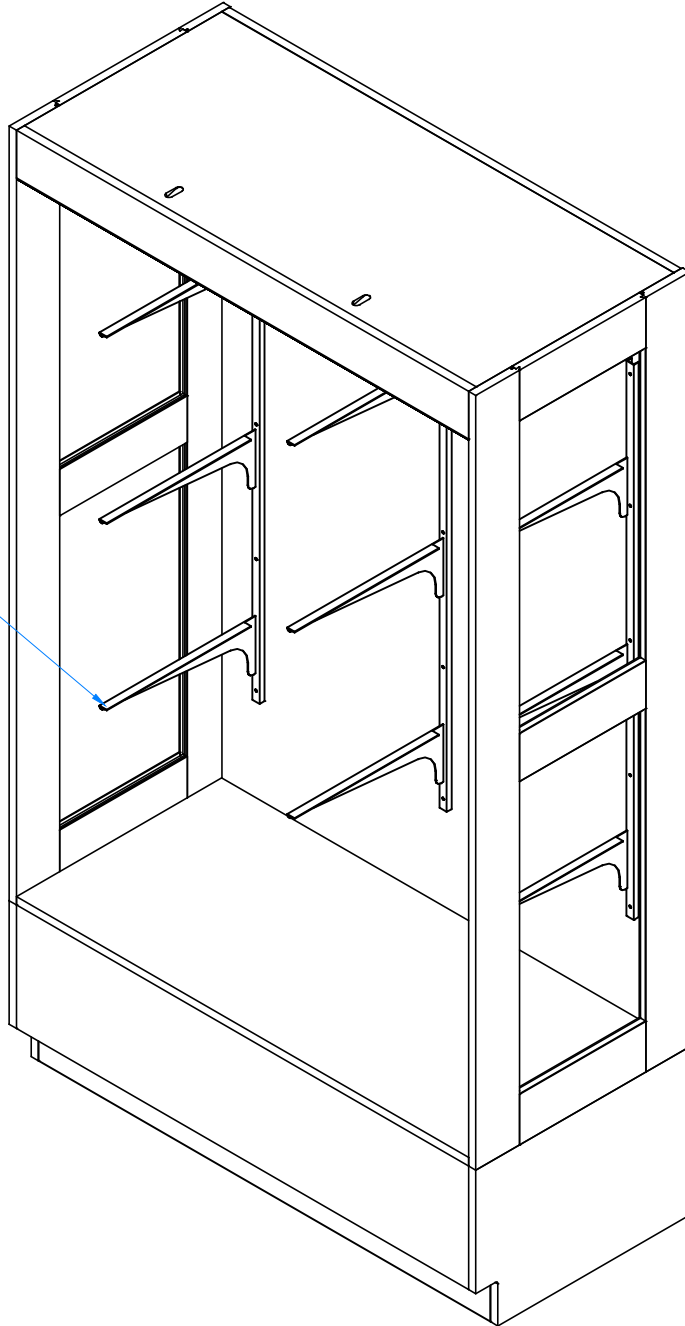
TITLE:
PREMIER DISPLAY CABINET
ASSEMBLY INSTRUCTIONS

REV.	DESCRIPTION	DATE	NAME	ECN No.
C	ADDED LAST SHEET WITH LOCK HOLE DETAILS	08/08/2023	JCF	N/A
B	LIGHT BAR AND POWER CORD UPDATED	7/28/23	RJM	1398
A	CREATED DRAWING	5/19/21	EMR	N/A
REV.	DESCRIPTION	DATE	NAME	ECN No.

DRAWING NUMBER: 380-4822	SCALE: NTS	SHEET: 6 OF 14	REVISION: REV C
------------------------------------	---------------	-------------------	--------------------

STEP 5:

- a. ATTACH SHELF BRACKETS TO SHELF STANDARDS IN DESIRED LOCATION.
- b. MAKE SURE SHELVES WILL BE LEVEL.



SHELF BRACKET - TYPICAL

NOTE:

1.

ALL DIMENSIONS ARE IN INCHES UNLESS NOTED OTHERWISE	DWN BY:	EMR	DATE DWN:	5/19/21
DECIMALS: X = ± .030	APR BY:		DATE APR:	
XX = ± .020	APR BY:		DATE APR:	
XXX = ± .010	APR BY:		DATE APR:	
ANGLES: ± 1°	APR BY:		DATE APR:	
CABINET SQUARENESS: ± .0625	APR BY:		DATE APR:	

CONFIDENTIAL:
ALL DESIGN RIGHTS RESERVED
THE INFORMATION, DATA, DESIGN, AND DRAWINGS EMBODIED IN THIS DOCUMENT AND ALL REPRODUCTIONS THEREOF ARE THE EXCLUSIVE PROPERTY OF DIVERSIFIED WOODCRAFTS, INC.

THESE DOCUMENTS ARE SUPPLIED WITH THE UNDERSTANDING THAT THEY WILL NOT BE DISCLOSED TO THIRD PARTIES WITHOUT WRITTEN CONSENT OF DIVERSIFIED WOODCRAFTS, INC. ANY REPRODUCTION IN PART OR WHOLE WITHOUT WRITTEN CONSENT IS SUBJECT TO LEGAL ACTION.



300 South Krueger Street
Suring, WI 54174
diversifiedwoodcrafts.com

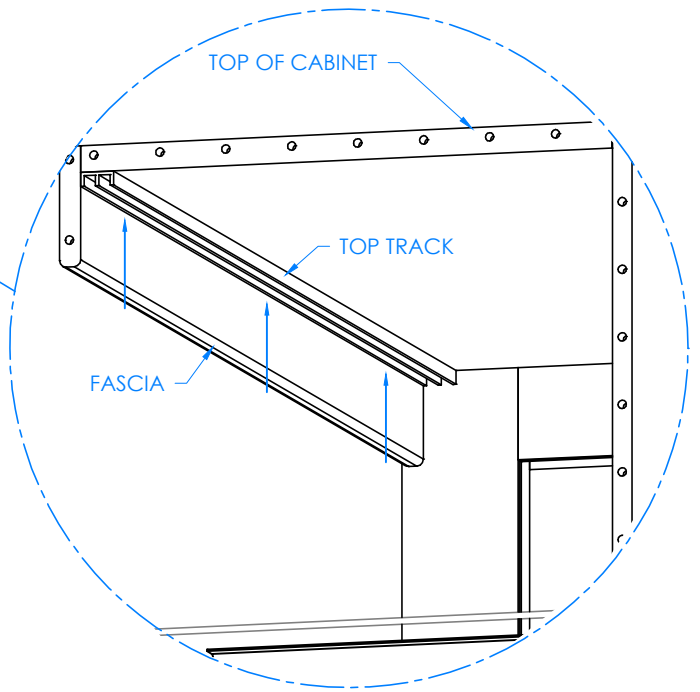
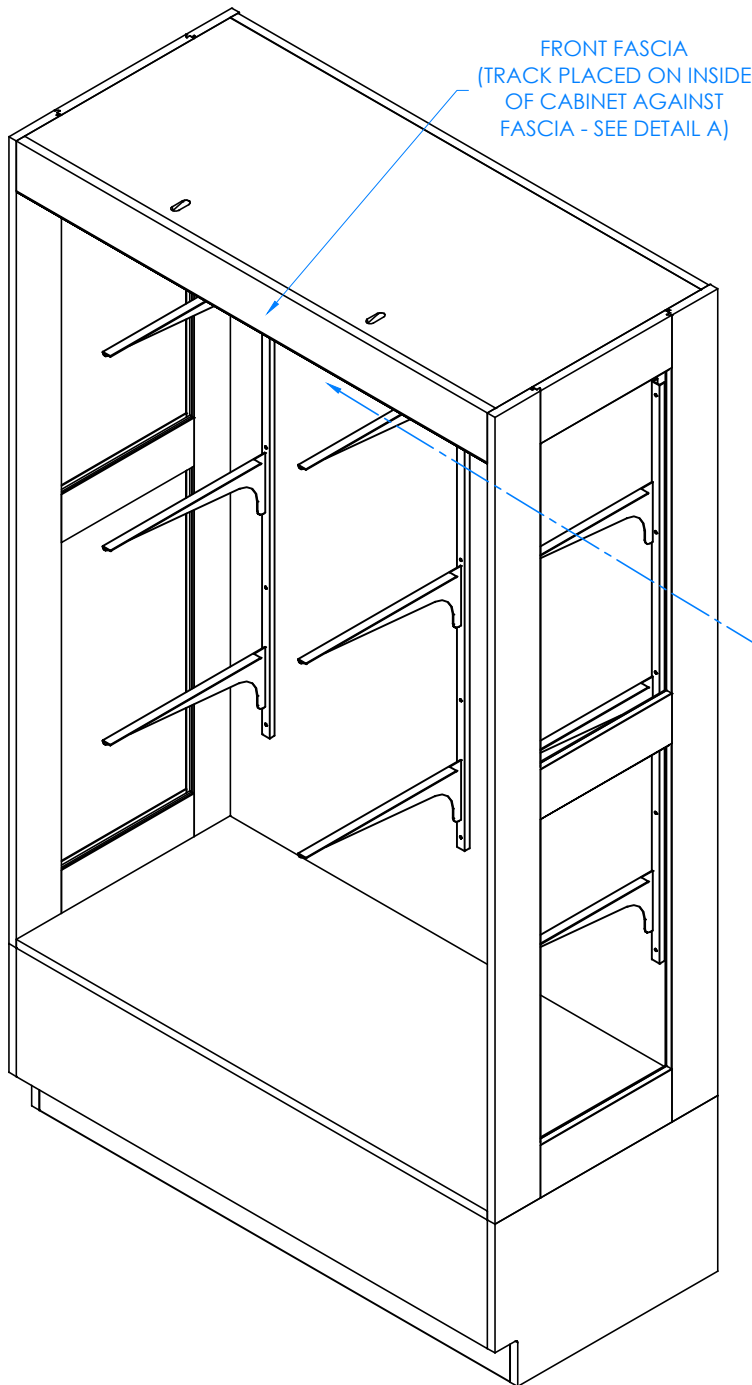
TITLE:
PREMIER DISPLAY CABINET
ASSEMBLY INSTRUCTIONS

REV.	DESCRIPTION	DATE	NAME	ECN No.
C	ADDED LAST SHEET WITH LOCK HOLE DETAILS	08/08/2023	JCF	N/A
B	LIGHT BAR AND POWER CORD UPDATED	7/28/23	RJM	1398
A	CREATED DRAWING	5/19/21	EMR	N/A
REV.	DESCRIPTION	DATE	NAME	ECN No.
REVISION LEVEL				

DRAWING NUMBER:	SCALE:	SHEET:	REVISION:
380-4822	NTS	7 OF 14	REV C

STEP 6:

- a. PLACE UPPER TRACK INSIDE CABINET TIGHT AGAINST FRONT FASCIA (SEE DETAIL A).
- b. PRE-DRILL HOLES IN TOP OF CABINET TO PREVENT CRACKING.
- c. ATTACH USING HARDWARE PROVIDED.
- d. MAKE SURE SCREWS ARE ON TIGHT TRACK IS ON SECURE.



DETAIL A - CLOSE UP OF TOP TRACK ASSEMBLY
RIGHT SIDE OF CABINET REMOVED TO SHOW CLARITY

NOTE:

1.

ALL DIMENSIONS ARE IN INCHES UNLESS NOTED OTHERWISE	DWN BY:	EMR	DATE DWN:	5/19/21
DECIMALS: X = ± .030	APR BY:		DATE APR:	
XX = ± .020	APR BY:		DATE APR:	
XXX = ± .010	APR BY:		DATE APR:	
ANGLES: = ± 1°				
CABINET SQUARENESS: = ± .0625				



300 South Krueger Street
Suring, WI 54174
diversifiedwoodcrafts.com

CONFIDENTIAL:
ALL DESIGN RIGHTS RESERVED
THE INFORMATION, DATA, DESIGN, AND DRAWINGS EMBODIED IN THIS DOCUMENT AND ALL REPRODUCTIONS THEREOF ARE THE EXCLUSIVE PROPERTY OF DIVERSIFIED WOODCRAFTS, INC.

TITLE:
PREMIER DISPLAY CABINET
ASSEMBLY INSTRUCTIONS

REV.	DESCRIPTION	DATE	NAME	ECN No.
C	ADDED LAST SHEET WITH LOCK HOLE DETAILS	08/08/2023	JCF	N/A
B	LIGHT BAR AND POWER CORD UPDATED	7/28/23	RJM	1398
A	CREATED DRAWING	5/19/21	EMR	N/A
REV.	DESCRIPTION	DATE	NAME	ECN No.
REVISION LEVEL				

THESE DOCUMENTS ARE SUPPLIED WITH THE UNDERSTANDING THAT THEY WILL NOT BE DISCLOSED TO THIRD PARTIES WITHOUT WRITTEN CONSENT OF DIVERSIFIED WOODCRAFTS, INC. ANY REPRODUCTION IN PART OR WHOLE WITHOUT WRITTEN CONSENT IS SUBJECT TO LEGAL ACTION.

DRAWING NUMBER:

380-4822

SCALE:

NTS

SHEET:

8 OF 14

REVISION:

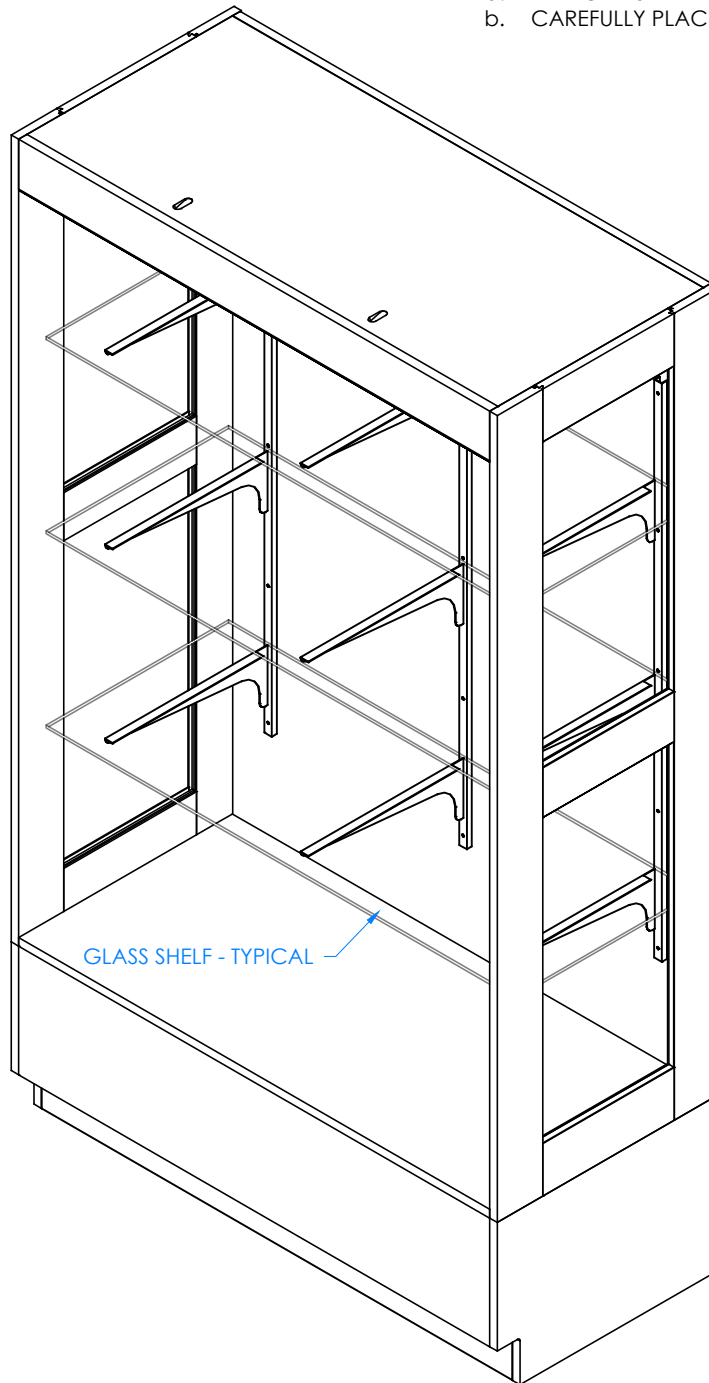
REV C

HARDWARE REQUIRED FOR STEP

QTY	DESCRIPTION	PART NUMBER
27	RUBBER GROMMETS	247071

STEP 7:

- a. ATTACH RUBBER GROMMETS TO BRACKETS.
- b. CAREFULLY PLACE SHELVES ON BRACKETS.



NOTE:

1.

ALL DIMENSIONS ARE IN INCHES UNLESS NOTED OTHERWISE	DWN BY:	EMR	DATE DWN:	5/19/21
DECIMALS: X = ± .030	APR BY:		DATE APR:	
XX = ± .020	APR BY:		DATE APR:	
XXX = ± .010	APR BY:		DATE APR:	
ANGLES: ± 1°	APR BY:		DATE APR:	
CABINET SQUARENESS: ± .0625	APR BY:		DATE APR:	



300 South Krueger Street
Suring, WI 54174
diversifiedwoodcrafts.com

CONFIDENTIAL:
ALL DESIGN RIGHTS RESERVED
THE INFORMATION, DATA, DESIGN, AND DRAWINGS EMBODIED IN THIS DOCUMENT AND ALL REPRODUCTIONS THEREOF ARE THE EXCLUSIVE PROPERTY OF DIVERSIFIED WOODCRAFTS, INC.

TITLE:
PREMIER DISPLAY CABINET
ASSEMBLY INSTRUCTIONS

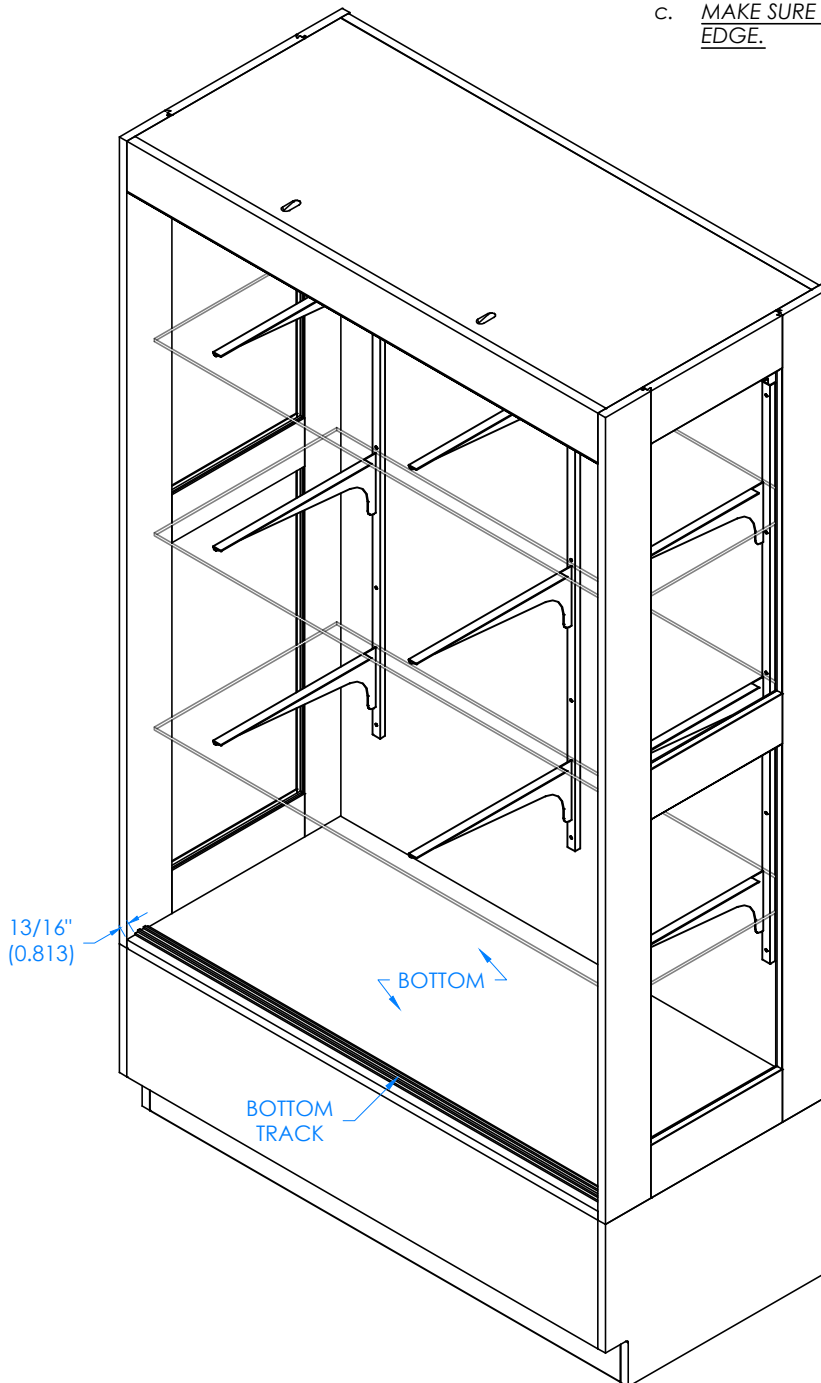
REV.	DESCRIPTION	DATE	NAME	ECN No.
C	ADDED LAST SHEET WITH LOCK HOLE DETAILS	08/08/2023	JCF	N/A
B	LIGHT BAR AND POWER CORD UPDATED	7/28/23	RJM	1398
A	CREATED DRAWING	5/19/21	EMR	N/A
REV.	DESCRIPTION	DATE	NAME	ECN No.
REVISION LEVEL				

THESE DOCUMENTS ARE SUPPLIED WITH THE UNDERSTANDING THAT THEY WILL NOT BE DISCLOSED TO THIRD PARTIES WITHOUT WRITTEN CONSENT OF DIVERSIFIED WOODCRAFTS, INC. ANY REPRODUCTION IN PART OR WHOLE WITHOUT WRITTEN CONSENT IS SUBJECT TO LEGAL ACTION.

DRAWING NUMBER:	SCALE:	SHEET:	REVISION:
380-4822	NTS	9 OF 14	REV C

STEP 8:

- a. ATTACH BOTTOM TRACK TO BOTTOM OF CABINET WITH HARDWARE PROVIDED.
- b. PRE-DRILL HOLES IN BOTTOM TO PREVENT CRACKING.
- c. MAKE SURE TRACK IS PLACED $13/16"$ FROM FRONT EDGE.



NOTE:

1.

ALL DIMENSIONS ARE IN INCHES UNLESS NOTED OTHERWISE	DWN BY:	EMR	DATE DWN:	5/19/21
DECIMALS: X = ± .030	APR BY:		DATE APR:	
XX = ± .020	APR BY:		DATE APR:	
XXX = ± .010	APR BY:		DATE APR:	
ANGLES: ± 1°				
CABINET SQUARENESS: ± .0625				

CONFIDENTIAL:
ALL DESIGN RIGHTS RESERVED
THE INFORMATION, DATA, DESIGN, AND DRAWINGS EMBODIED IN THIS DOCUMENT AND ALL REPRODUCTIONS THEREOF ARE THE EXCLUSIVE PROPERTY OF DIVERSIFIED WOODCRAFTS, INC.

THESE DOCUMENTS ARE SUPPLIED WITH THE UNDERSTANDING THAT THEY WILL NOT BE DISCLOSED TO THIRD PARTIES WITHOUT WRITTEN CONSENT OF DIVERSIFIED WOODCRAFTS, INC. ANY REPRODUCTION IN PART OR WHOLE WITHOUT WRITTEN CONSENT IS SUBJECT TO LEGAL ACTION.



300 South Krueger Street
Suring, WI 54174
diversifiedwoodcrafts.com

TITLE:
PREMIER DISPLAY CABINET
ASSEMBLY INSTRUCTIONS

REV.	DESCRIPTION	DATE	NAME	ECN No.
C	ADDED LAST SHEET WITH LOCK HOLE DETAILS	08/08/2023	JCF	N/A
B	LIGHT BAR AND POWER CORD UPDATED	7/28/23	RJM	1398
A	CREATED DRAWING	5/19/21	EMR	N/A
REV.	DESCRIPTION	DATE	NAME	ECN No.

DRAWING NUMBER:	SCALE:	SHEET:	REVISION:
380-4822	NTS	10 OF 14	REV C

STEP 9:

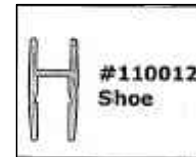
- a. ATTACH LOCKING MECHANISM TO DOOR WITH PREDRILLED LOCK HOLE.
- b. TAKE REAR DOOR (WITHOUT LOCK) AND POSITION UP INTO TOP TRACK SO THE "TOP GUIDES" FIT INTO TOP TRACK.
- c. NOTE: DOOR WILL NEED TO BE TILTED IN ORDER TO FIT "SHOE" INTO BOTTOM TRACK.
- d. PUSH DOOR UP HIGH ENOUGH SO "SHOE" ON BOTTOM OF DOORS FIT INSIDE BOTTOM TRACK.
- e. REPEAT STEP FOR FRONT DOOR (WITH LOCK). POSITION SO THAT LOCK IN NEAR CENTER OF CABINET WHEN BOTH DOORS ARE CLOSED.
- f. RUBBER BUMPERS NEED TO BE ATTACHED TO SIDES TO PREVENT DAMAGE TO GLASS DOORS.
- g. WITH BOTH DOORS FULLY CLOSED, MARK THE LOCATION OF THE LOCK PLUNGER ON THE REAR DOOR AND DRILL A MINIMUM 3/8" DIA HOLE FOR THE PLUNGER TO ENGAGE.
- g.a. SEE FINAL SHEET IN THIS DOCUMENT FOR DETAILS

PARTS USED ON DOORS:

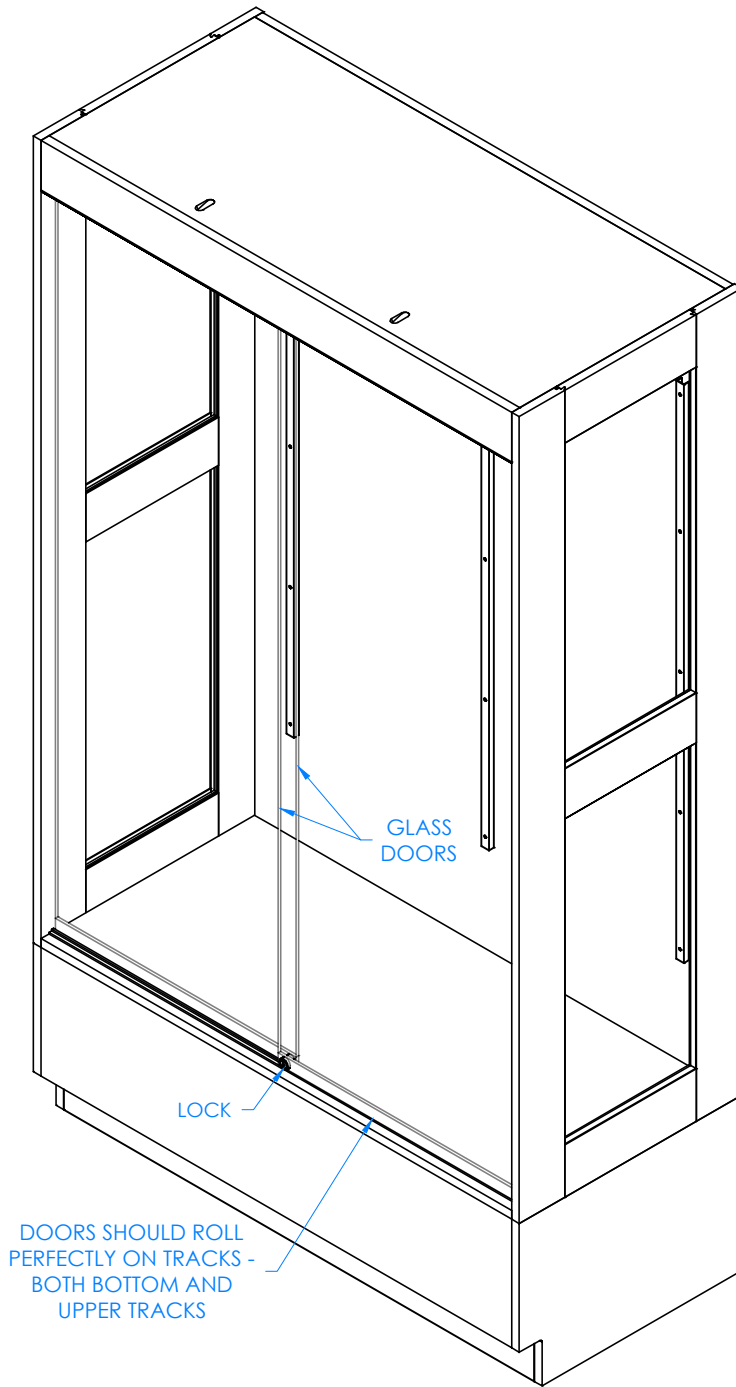
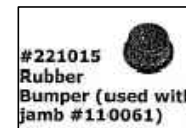
TOP GUIDE ATTACHED TO TOP OF EACH GLASS DOOR



SHOE ATTACHED TO BOTTOM OF EACH GLASS DOOR



RUBBER BUMPERS ATTACHED TO EACH SIDE OF CABINET



GLASS SHELVES, AND SHELF BRACKETS REMOVED TO SHOW CLARITY

NOTE:

1.

ALL DIMENSIONS ARE IN INCHES UNLESS NOTED OTHERWISE	DWN BY:	EMR	DATE DWN:	5/19/21
DECIMALS: X = ± .030	APR BY:		DATE APR:	
XX = ± .020	APR BY:		DATE APR:	
XXX = ± .010	APR BY:		DATE APR:	
ANGLES: = ± 1°				
CABINET SQUARENESS: = ± .0625				

CONFIDENTIAL:
ALL DESIGN RIGHTS RESERVED
THE INFORMATION, DATA, DESIGN, AND DRAWINGS EMBODIED IN THIS DOCUMENT AND ALL REPRODUCTIONS THEREOF ARE THE EXCLUSIVE PROPERTY OF DIVERSIFIED WOODCRAFTS, INC.

THESE DOCUMENTS ARE SUPPLIED WITH THE UNDERSTANDING THAT THEY WILL NOT BE DISCLOSED TO THIRD PARTIES WITHOUT WRITTEN CONSENT OF DIVERSIFIED WOODCRAFTS, INC. ANY REPRODUCTION IN PART OR WHOLE WITHOUT WRITTEN CONSENT IS SUBJECT TO LEGAL ACTION.



300 South Krueger Street
Suring, WI 54174
diversifiedwoodcrafts.com

TITLE:
PREMIER DISPLAY CABINET
ASSEMBLY INSTRUCTIONS

REV.	DESCRIPTION	DATE	NAME	ECN No.
C	ADDED LAST SHEET WITH LOCK HOLE DETAILS	08/08/2023	JCF	N/A
B	LIGHT BAR AND POWER CORD UPDATED	7/28/23	RJM	1398
A	CREATED DRAWING	5/19/21	EMR	N/A
REV.	DESCRIPTION	DATE	NAME	ECN No.
REVISION LEVEL				

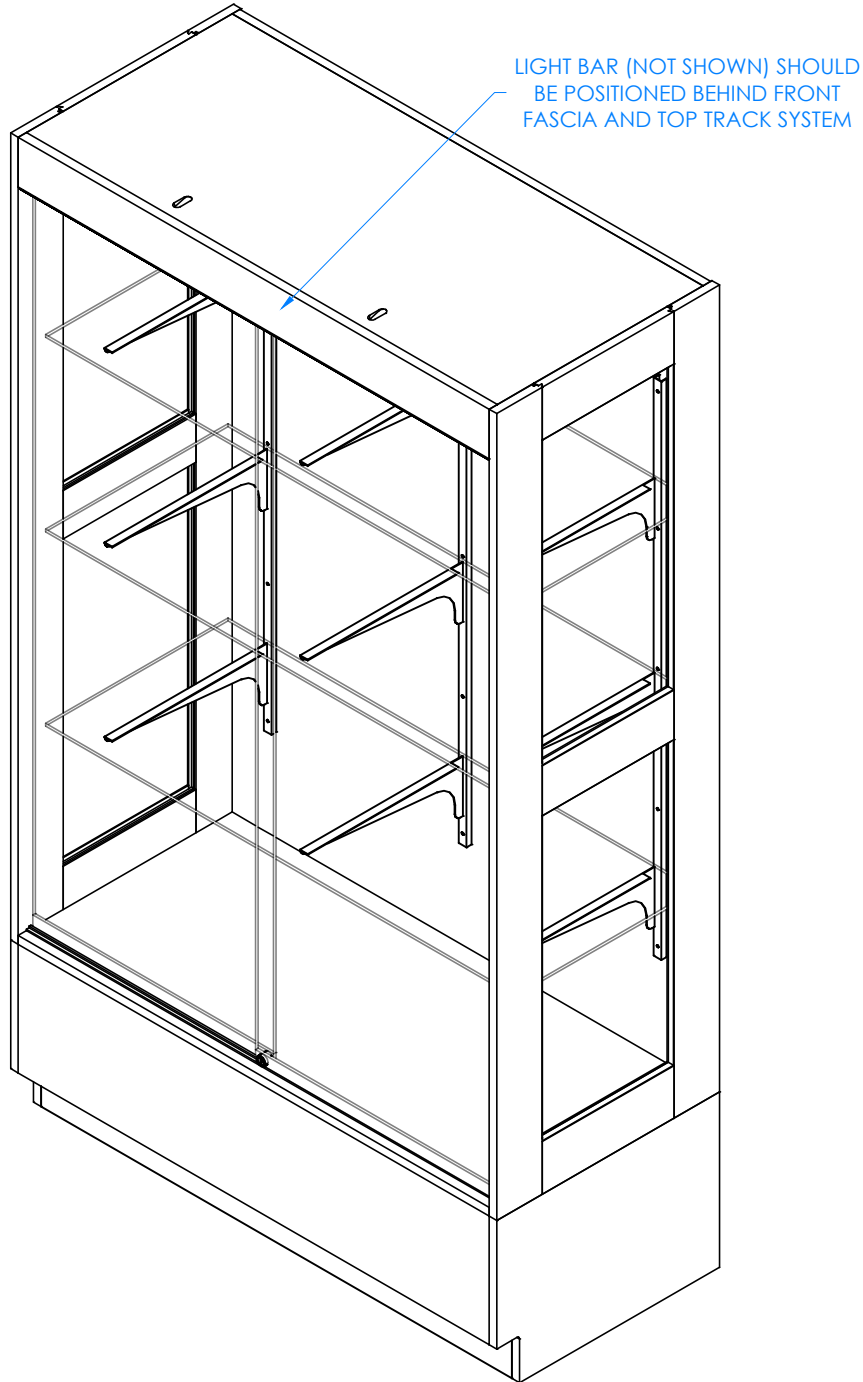
DRAWING NUMBER:	380-4822	SCALE:	NTS	SHEET:	11 OF 14	REVISION:	REV C
-----------------	----------	--------	-----	--------	----------	-----------	-------

STEP 10:

- a. ADD LIGHT BAR IN DESIRED LOCATION (NOT SHOWN).
- b. LIGHT BAR IS POSITIONED IN THE FRONT BEHIND FRONT FASCIA AFTER GLASS RAIL SYSTEM IS INSTALLED WITH HARDWARE PROVIDED.
- c. DEPENDING ON LOCATION OF POWER SOURCE, YOU CAN DRILL THROUGH TOP, BACK, OR SIDES.

HARDWARE REQUIRED FOR STEP

QTY	DESCRIPTION	PART NUMBER
1	LIGHT BAR	258624
1	POWER CORD	258781



NOTE:

1.

ALL DIMENSIONS ARE IN INCHES UNLESS NOTED OTHERWISE DECIMALS: X = ± .030 XX = ± .020 XXX = ± .010 ANGLES: = ± 1° CABINET SQUARENESS: = ± .0625	DWN BY: EMR APR BY: APR BY:	DATE DWN: 5/19/21 DATE APR: DATE APR:
---	-----------------------------------	---



300 South Krueger Street
Suring, WI 54174
diversifiedwoodcrafts.com

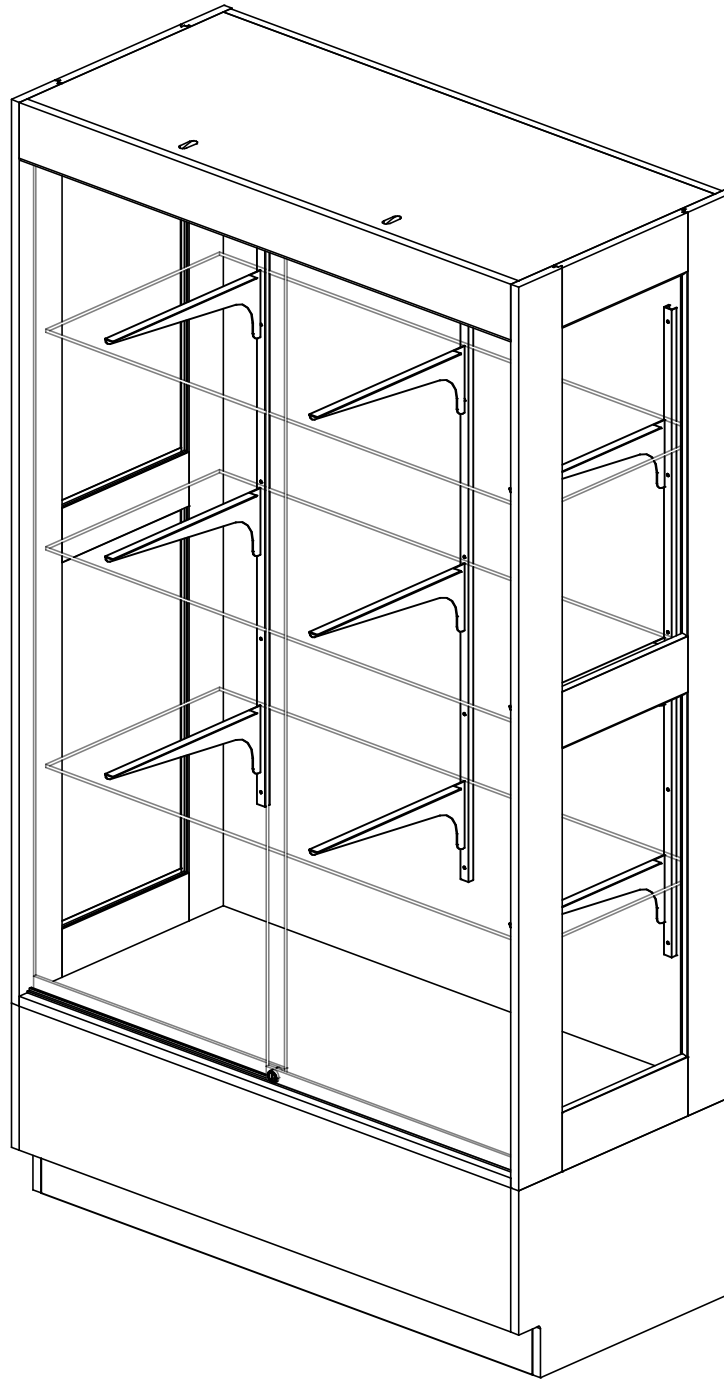
CONFIDENTIAL:
ALL DESIGN RIGHTS RESERVED
THE INFORMATION, DATA, DESIGN, AND DRAWINGS EMBODIED IN THIS DOCUMENT AND ALL REPRODUCTIONS THEREOF ARE THE EXCLUSIVE PROPERTY OF DIVERSIFIED WOODCRAFTS, INC.

TITLE:
PREMIER DISPLAY CABINET
ASSEMBLY INSTRUCTIONS

REV.	DESCRIPTION	DATE	NAME	ECN No.
C	ADDED LAST SHEET WITH LOCK HOLE DETAILS	08/08/2023	JCF	N/A
B	LIGHT BAR AND POWER CORD UPDATED	7/28/23	RJM	1398
A	CREATED DRAWING	5/19/21	EMR	N/A
REV.	DESCRIPTION	DATE	NAME	ECN No.

THESE DOCUMENTS ARE SUPPLIED WITH THE UNDERSTANDING THAT THEY WILL NOT BE DISCLOSED TO THIRD PARTIES WITHOUT WRITTEN CONSENT OF DIVERSIFIED WOODCRAFTS, INC. ANY REPRODUCTION IN PART OR WHOLE WITHOUT WRITTEN CONSENT IS SUBJECT TO LEGAL ACTION.

DRAWING NUMBER:	SCALE:	SHEET:	REVISION:
380-4822	NTS	12 OF 14	REV C



COMPLETE UNIT SHOWN

NOTE:

1.

ALL DIMENSIONS ARE IN INCHES UNLESS NOTED OTHERWISE	DWN BY:	EMR	DATE DWN:	5/19/21
DECIMALS: X = ± .030	APR BY:		DATE APR:	
XX = ± .020	APR BY:		DATE APR:	
XXX = ± .010	APR BY:		DATE APR:	
ANGLES: ± 1°	APR BY:		DATE APR:	
CABINET SQUARENESS: ± .0625	APR BY:		DATE APR:	

CONFIDENTIAL:
ALL DESIGN RIGHTS RESERVED
THE INFORMATION, DATA, DESIGN, AND DRAWINGS EMBODIED IN THIS DOCUMENT AND ALL REPRODUCTIONS THEREOF ARE THE EXCLUSIVE PROPERTY OF DIVERSIFIED WOODCRAFTS, INC.



300 South Krueger Street
Suring, WI 54174
diversifiedwoodcrafts.com

TITLE:
PREMIER DISPLAY CABINET
ASSEMBLY INSTRUCTIONS

REV.	DESCRIPTION	DATE	NAME	ECN No.
C	ADDED LAST SHEET WITH LOCK HOLE DETAILS	08/08/2023	JCF	N/A
B	LIGHT BAR AND POWER CORD UPDATED	7/28/23	RJM	1398
A	CREATED DRAWING	5/19/21	EMR	N/A
REV.	DESCRIPTION	DATE	NAME	ECN No.
REVISION LEVEL				

THESE DOCUMENTS ARE SUPPLIED WITH THE UNDERSTANDING THAT THEY WILL NOT BE DISCLOSED TO THIRD PARTIES WITHOUT WRITTEN CONSENT OF DIVERSIFIED WOODCRAFTS, INC. ANY REPRODUCTION IN PART OR WHOLE WITHOUT WRITTEN CONSENT IS SUBJECT TO LEGAL ACTION.

DRAWING NUMBER:

380-4822

SCALE:

NTS

SHEET:

13 OF 14

REVISION:

REV C

Installation Instructions for #511040 Plunger Locks in #110012 Shoe for Sliding Glass Doors

1. Assemble the lock to the front door shoe with the provided bent retaining clip as shown in the diagram below.
2. For a snugger fit, remove the glass from the shoe and with the flat side of the lock facing the flat interior surface of the shoe, use a 1/8" dia. Punch and peen the web of the door shoe onto the flat portion of the lock (See diagram below).
3. Once the doors are installed onto the track, close them completely. Gently push the plunger lock in until it makes contact with the shoe on the inside door. Make a mark of that contact point, remove both glass panels and drill a 5/16" hole at the point marked.

