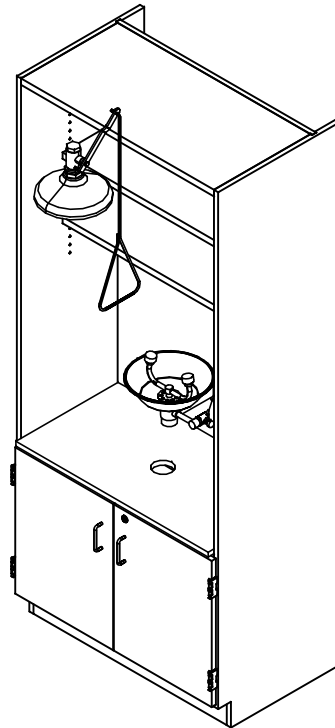


# SHOWER/EYEWASH STATION

6900K & 6900K-ADA  
ASSEMBLY INSTRUCTIONS



NOTE:

1. MODEL VIEWS MAY NOT REPRESENT EXACT MODEL PURCHASED

DWN BY:	EMK	DWN DATE:	4/9/15
APR BY:		DATE APR:	
APR BY:		DATE APR:	

UNLESS OTHERWISE SPECIFIED  
DIMENSION ARE IN INCHES  
CABINET SQUARENESS ± .0625  
FRACTIONAL VALUES ± 1/32"  
- ALL VALUES ± OVERALL -



300 South Krueger Street  
Suring, WI 54174  
diversifiedwoodcrafts.com

TITLE:  
SHOWER/EYEWASH STATION  
ASSEMBLY INSTRUCTIONS

REV.	DESCRIPTION	DATE	NAME	ECN NO.
A	CREATED ASSEMBLY INSTRUCTIONS	4/9/15	EMK	-
REVISION LEVEL				

THIS DRAWING IS THE SOLE PROPERTY OF  
DIVERSIFIED WOOD CRAFTS. IT MAY NOT  
BE ALTERED OR CHANGED WITHOUT  
PERMISSION

DRAWING NUMBER:	SCALE:	SHEET:	REVISION:
6900K & 6900K-ADA	NTS	1 OF 3	REV A

## TOOLS REQUIRED

CONTACT CEMENT

SCREW DRIVER

## ASSEMBLY COMPONENTS

ITEMS INCLUDED	PART #	PART DESCRIPTION	QTY
RUBBER BASE MOLDING	100283	RUBBER BASE MOLDING (SOLD BY FOOT)	13.5
STAINLESS STEEL CORNERS	100057	CORNERS-STAINLESS STEEL,BASE	4
SCREWS-BASE	100064	SCREW,#6X 1/2 PTH SMS SS SCREW	16
SHELF CLIPS	100027	SHELF CLIPS,PLASTIC,5MM PIN	12
FIXTURE	100615	FIXTURE,EW814 WALL MNT. EYEWASH	1
FIXTURE	100614	FIXTURE,ES635 VERTICAL MTD SHOWER	1
**FIXTURE**	226460	FIXTURE,ES643 W/47.5 PULL ROD ADA	1
**FIXTURE**	100633	FIXTURE, EW808 EYEWASH FOR ADA UNIT	1

**NOTE:**

1. **\*\*XX\*\*** INDICATES ITEMS USED ONLY FOR THE 6900K-ADA.

DWN BY:	EMK	DWN DATE:	4/9/15
APR BY:		DATE APR:	
APR BY:		DATE APR:	

UNLESS OTHERWISE SPECIFIED  
DIMENSION ARE IN INCHES  
CABINET SQUARENESS ± .0625  
FRACTIONAL VALUES ± 1/32"  
- ALL VALUES ± OVERALL -



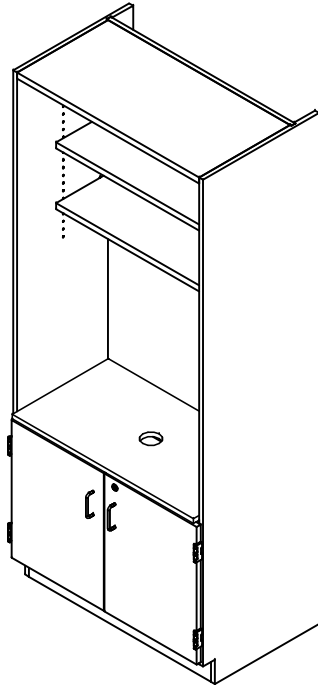
300 South Krueger Street  
Suring, WI 54174  
diversifiedwoodcrafts.com

TITLE:  
SHOWER/EYEWASH STATION  
TOOLS AND ASSEMBLY COMPONENTS

REV.	DESCRIPTION	DATE	NAME	ECH NO.
A	CREATED ASSEMBLY INSTRUCTIONS	4/9/15	EMK	-
				REVISION LEVEL

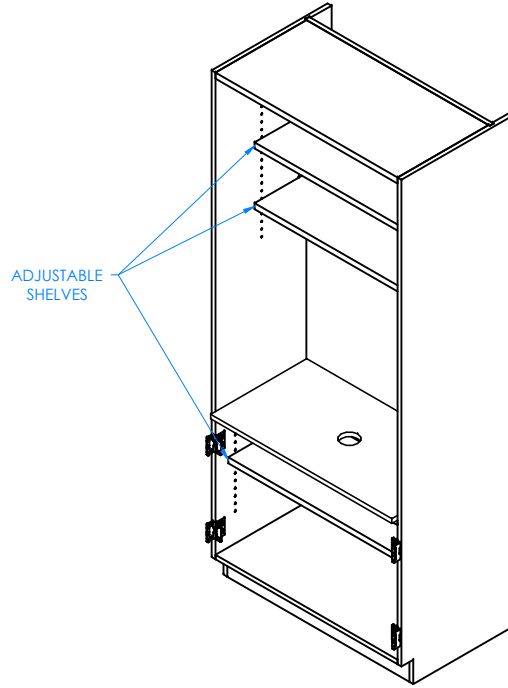
THIS DRAWING IS THE SOLE PROPERTY OF  
DIVERSIFIED WOOD CRAFTS. IT MAY NOT  
BE ALTERED OR CHANGED WITHOUT  
PERMISSION

DRAWING NUMBER:	SCALE:	SHEET:	REVISION:
6900K & 6900K-ADA	NTS	2 OF 3	REV A



STEP 1:

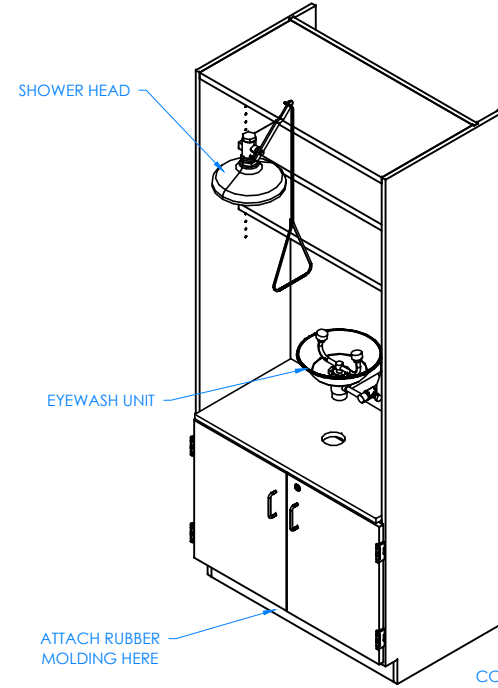
POSITION CABINET IN YOUR DESIRED LOCATION. LEVEL THE CABINET AND ANCHOR TO WALL AS CABINET WILL BE TOP HEAVY. CABINETS MUST BE LEVELED OR DOORS AND DRAWERS MAY NOT OPEN OR CLOSE CORRECTLY.



DOORS REMOVED TO SHOW CLARITY

STEP 2:

INSERT SHELF CLIPS IN DESIRED LOCATION. PLACE SHELVES ON CLIPS, MAKING SURE THEY ARE LEVEL.



COMPLETE UNIT SHOWN

STEP 3:

IF YOU HAVE A 6900K UNIT, ATTACH RUBBER MOLDING TO BASE OF CABINET USING CONTACT CEMENT. AFTER MOLDING IS IN PLACE, SCREW STAINLESS STEEL CORNER BRACKETS ON EACH CORNER OVER THE BASE MOLDING WITH THE SCREWS PROVIDED. ATTACH SHOWER HEAD AND EYEWASH UNIT.

**NOTE:**

1. ALL PLUMBING NEEDS TO BE DONE BY A LICENSED PLUMBER PER LOCAL CODE.

DWN BY:	EMK	DWN DATE:	4/9/15
APR BY:		DATE APR:	
APR BY:		DATE APR:	

UNLESS OTHERWISE SPECIFIED DIMENSION ARE IN INCHES  
 CABINET SQUARENESS ± .0625  
 FRACTIONAL VALUES ± 1/32"  
 - ALL VALUES ± OVERALL -



300 South Krueger Street  
 Suring, WI 54174  
 diversifiedwoodcrafts.com

TITLE:  
**SHOWER/EYEWASH STATION  
 ASSEMBLY INSTRUCTIONS**

REV.	DESCRIPTION	DATE	NAME	ECH NO.
A	CREATED ASSEMBLY INSTRUCTIONS	4/9/15	EMK	-
REVISION LEVEL				

THIS DRAWING IS THE SOLE PROPERTY OF DIVERSIFIED WOOD CRAFTS. IT MAY NOT BE ALTERED OR CHANGED WITHOUT PERMISSION

DRAWING NUMBER:	SCALE:	SHEET:	REVISION:
<b>6900K &amp; 6900K-ADA</b>	NTS	3 OF 3	REV A