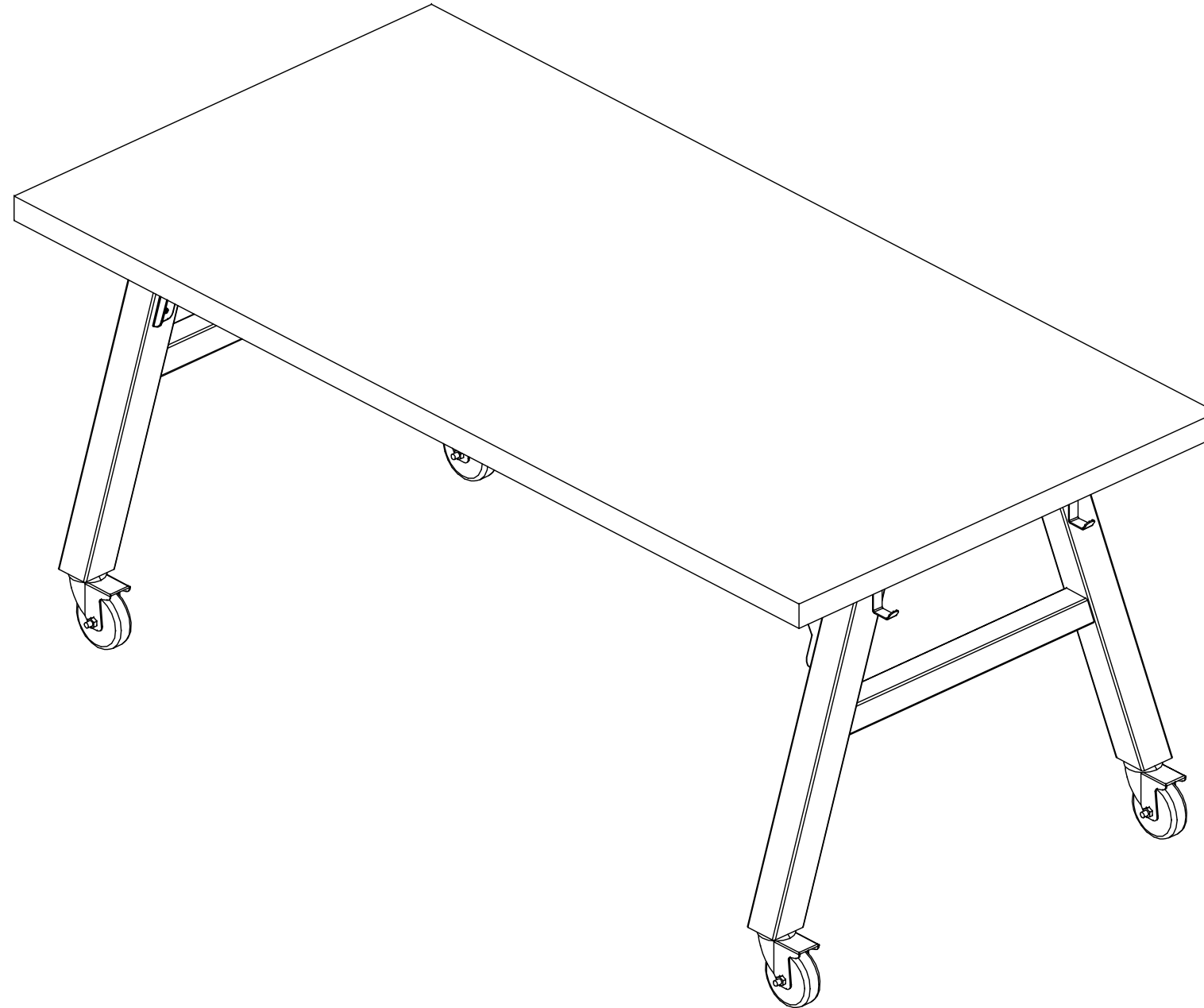


# A-FRAME TABLE

## AFT SERIES TABLES ASSEMBLY INSTRUCTIONS



**NOTE:**

1. MODEL VIEWS MAY NOT REPRESENT EXACT MODEL PURCHASED

ALL DIMENSIONS ARE IN INCHES UNLESS NOTED OTHERWISE	DWN BY:	EMR	DATE DWN:	4/1/20
DECIMALS: .X = ± .030	APR BY:		DATE APR:	
.XX = ± .020	APR BY:		DATE APR:	
.XXX = ± .010	APR BY:		DATE APR:	
ANGLES: = ± 1°				
CABINET SQUARENESS = ± .0625				



300 South Krueger Street  
Suring, WI 54174  
diversifiedwoodcrafts.com

CONFIDENTIAL:  
ALL DESIGN RIGHTS RESERVED.  
THE INFORMATION, DATA, DESIGN, AND DRAWINGS EMBODIED IN THIS DOCUMENT AND ALL REPRODUCTIONS THEREOF ARE THE EXCLUSIVE PROPERTY OF DIVERSIFIED WOODCRAFTS, INC.

TITLE:  
A-FRAME TABLES  
ASSEMBLY INSTRUCTIONS

THESE DOCUMENTS ARE SUPPLIED WITH THE UNDERSTANDING THAT THEY WILL NOT BE DISCLOSED TO THIRD PARTIES WITHOUT WRITTEN CONSENT OF DIVERSIFIED WOODCRAFTS, INC. ANY REPRODUCTION IN PART OR WHOLE WITHOUT WRITTEN CONSENT IS SUBJECT TO LEGAL ACTION.

REV.	DESCRIPTION	DATE	NAME	ECN NO.
C	UPDATED SILICONE PROCEDURE	8/24/23	RJM	-
A	CREATED DRAWING	4/1/20	EMR	-
REVISION LEVEL				

DRAWING NUMBER:	SCALE:	SHEET:	REVISION:
AFT SERIES TABLES	NTS	1 OF 10	REV C

## TOOLS REQUIRED

1/16" WRENCH
1/16" SOCKET AND TORQUE WRENCH - OPTIONAL
SCREW DRIVER
DRILL
3/16" DRILL BIT
#8 SQUARE DRIVE BIT

## ASSEMBLY COMPONENTS

ITEMS INCLUDED	PART #	PART DESCRIPTION	QTY
TOP	VARIES	TOP (STYLE, SIZE, AND THICKNESS VARIES)	1
SCREWS - TOP	100369	SCREW,#12.00X7/8 PHIL PAN HEAD SM	VARIES
A-FRAME	VARIES	FRAME,A-FRAME TABLE (SIZE AND COLOR VARIES)	1
LEFT GUSSET	258708	GUSSET,STEEL,LEFT,MATTE/SATIN	2
RIGHT GUSSET	258709	GUSSET,STEEL,RIGHT,MATTE/SATIN	2
SCREWS - GUSSET	258789	SCREW,#8-18X1/2" SQ DRIVE SELF DRILLING PAN HEAD, 10 PER BAG	2
A-FRAME HARDWARE - BOLTS	256008-X	BOLT,3/8X3-1/2,CARRIAGE BOLT, (COLOR VARIES)	8
A-FRAME HARDWARE NUTS	255266	NUT,LOCK,3/8"-16,ZINC FINISH,NYLON JAM LOCK NUT	8
**CASTER - DUETTO**	255813	CASTER,DUETTO,100MM TWIN WHEEL,BLACK,TOTAL LOCKING DEVICE	4
**CASTER - INDUSTRIAL**	255721	CASTER,4",TOTAL LOCK STEM CASTER M12 - 1.75MM X 1.75"	4
**LOCK WASHER - INDUSTRIAL CASTER**	257150	WASHER,1/2" STEEL LOCK WASHER,ZINC	4
**GLIDE**	255723	GLIDE,NYLON,M12X20MM THREADED STEM,59MM HIGH,45MM NECK, BLACK	4
**SILICONE**	100711	SILICONE,SEALANT,CLEAR	1
BACK PACK HOOK - OPTIONAL	256063-X	HOOK,BACKPACK,POWDERCOAT, (COLOR VARIES)	VARIES

**NOTE:**

1. COMPONENTS VARY WITH STYLE OF TABLE PURCHASED.
  - 1.1. FRAME COLORS:
    - 1.1.1. BLACK, WHITE, CARROT, LIME, AQUA, SILVER, LIGHT GREY, OR DARK GREY.
  - 1.2. TOP SELECTIONS:
    - 1.2.1. CHEMGUARD, PHENOLIC, 1 3/4" MAPLE, EPOXY, SHOPTOP, BUTCHER BLOCK (WALNUT), COLORED PLASTIC LAMINATE, OR WOOD GRAIN LAMINATE (STUDIO & LOFT).
  - 1.3. SIZES OF TABLE:
    - 1.3.1. WIDTH = 48", 60", 72", 84", & 96"; DEPTH = 36", 42", & 48"; HEIGHT = 30", 36", & 42".
2. \*\*XX\*\* INDICATES ITEMS THAT MAY NOT COME WITH UNIT (DEPENDING ON MODEL PURCHASED).

REV.	DESCRIPTION	DATE	NAME	ECN NO.
C	UPDATED SILICONE PROCEDURE	8/24/23	RJM	-
A	CREATED DRAWING	4/1/20	EMR	-
REVISION LEVEL				

ALL DIMENSIONS ARE IN INCHES UNLESS NOTED OTHERWISE DECIMALS: .X = ± .030 .XX = ± .020 .XXX = ± .010 ANGLES: = ± 1° CABINET SQUARENESS = ± .0625	DWN BY: EMR	DATE DWN: 4/1/20
	APR BY:	DATE APR:
	APR BY:	DATE APR:

CONFIDENTIAL:  
ALL DESIGN RIGHTS RESERVED  
THE INFORMATION, DATA, DESIGN, AND DRAWINGS EMBODIED IN THIS DOCUMENT AND ALL REPRODUCTIONS THEREOF ARE THE EXCLUSIVE PROPERTY OF DIVERSIFIED WOODCRAFTS, INC.

THESE DOCUMENTS ARE SUPPLIED WITH THE UNDERSTANDING THAT THEY WILL NOT BE DISCLOSED TO THIRD PARTIES WITHOUT WRITTEN CONSENT OF DIVERSIFIED WOODCRAFTS, INC. ANY REPRODUCTION IN PART OR WHOLE WITHOUT WRITTEN CONSENT IS SUBJECT TO LEGAL ACTION.



300 South Krueger Street  
Suring, WI 54174  
diversifiedwoodcrafts.com

TITLE:  
A-FRAME TABLES  
TOOLS AND ASSEMBLY COMPONENTS

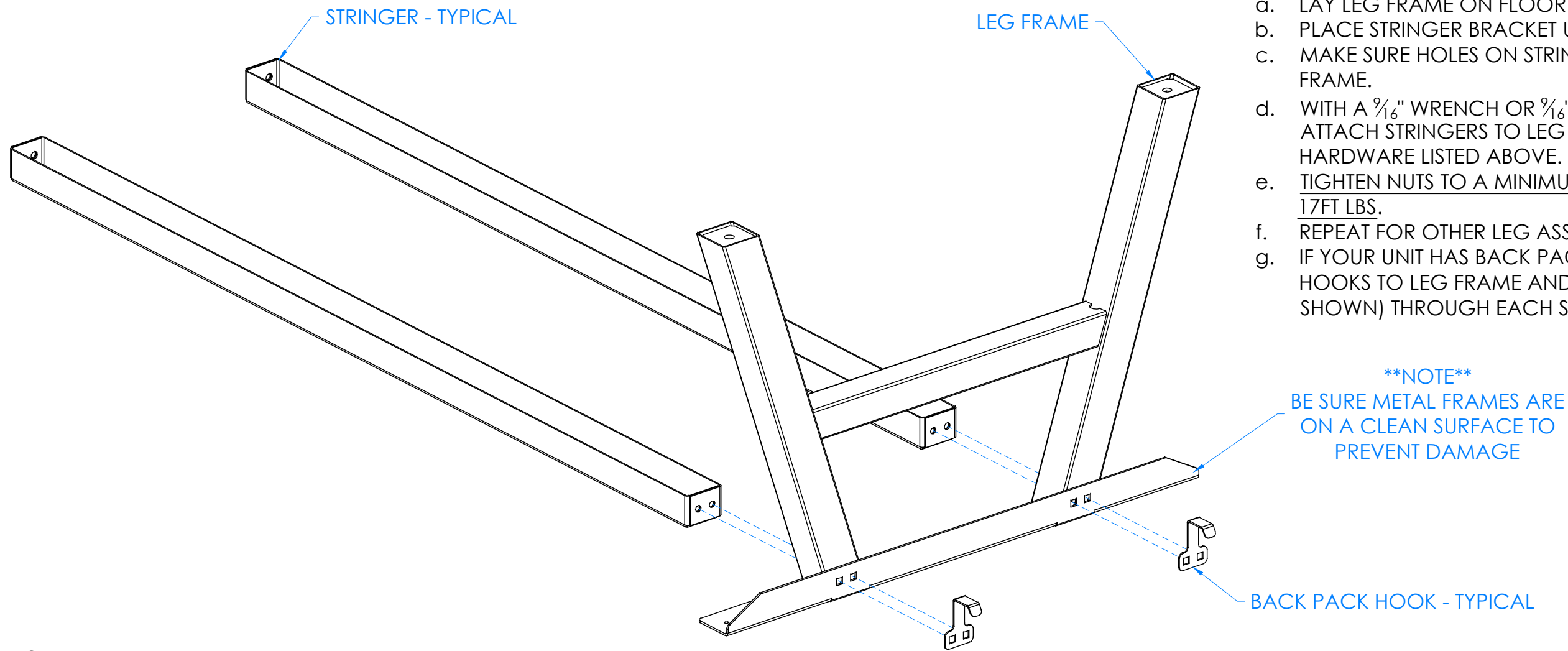
DRAWING NUMBER:	SCALE:	SHEET:	REVISION:
AFT SERIES TABLES	NTS	2 OF 10	REV C

## HARDWARE REQUIRED FOR STEP

QTY	DESCRIPTION	PART NUMBER
1	A-FRAME	VARIES
VARIES	BACK PACK HOOK	256063-X
8	A-FRAME HARDWARE - BOLTS	256008-X
8	A-FRAME HARDWARE - NUTS	255266

STEP 1:

- a. LAY LEG FRAME ON FLOOR.
- b. PLACE STRINGER BRACKET UP TO LEG FRAME.
- c. MAKE SURE HOLES ON STRINGERS LINE UP WITH HOLES ON LEG FRAME.
- d. WITH A  $\frac{9}{16}$ " WRENCH OR  $\frac{9}{16}$ " SOCKET AND TORQUE WRENCH, ATTACH STRINGERS TO LEG ASSEMBLY USING REQUIRED HARDWARE LISTED ABOVE.
- e. TIGHTEN NUTS TO A MINIMUM OF 12FT LBS BUT NOT TO EXCEED 17FT LBS.
- f. REPEAT FOR OTHER LEG ASSEMBLY.
- g. IF YOUR UNIT HAS BACK PACK HOOKS, LINE UP HOLES ON HOOKS TO LEG FRAME AND PLACE CARRIAGE BOLT (NOT SHOWN) THROUGH EACH SET OF HOLES.



**\*\*NOTE\*\***

BE SURE METAL FRAMES ARE ON A CLEAN SURFACE TO PREVENT DAMAGE

**NOTE:**

1.

ALL DIMENSIONS ARE IN INCHES UNLESS NOTED OTHERWISE DECIMALS: .X = ± .030 .XX = ± .020 .XXX = ± .010 ANGLES: = ± 1° CABINET SQUARENESS = ± .0625	DWN BY:	EMR	DATE DWN:	4/1/20
	APR BY:		DATE APR:	
	APR BY:		DATE APR:	
	APR BY:		DATE APR:	



300 South Krueger Street  
Suring, WI 54174  
diversifiedwoodcrafts.com

CONFIDENTIAL:  
ALL DESIGN RIGHTS RESERVED.  
THE INFORMATION, DATA, DESIGN, AND DRAWINGS EMBODIED IN THIS DOCUMENT AND ALL REPRODUCTIONS THEREOF ARE THE EXCLUSIVE PROPERTY OF DIVERSIFIED WOODCRAFTS, INC.

TITLE:  
**A-FRAME TABLES  
ASSEMBLY INSTRUCTIONS**

THESE DOCUMENTS ARE SUPPLIED WITH THE UNDERSTANDING THAT THEY WILL NOT BE DISCLOSED TO THIRD PARTIES WITHOUT WRITTEN CONSENT OF DIVERSIFIED WOODCRAFTS, INC. ANY REPRODUCTION IN PART OR WHOLE WITHOUT WRITTEN CONSENT IS SUBJECT TO LEGAL ACTION.

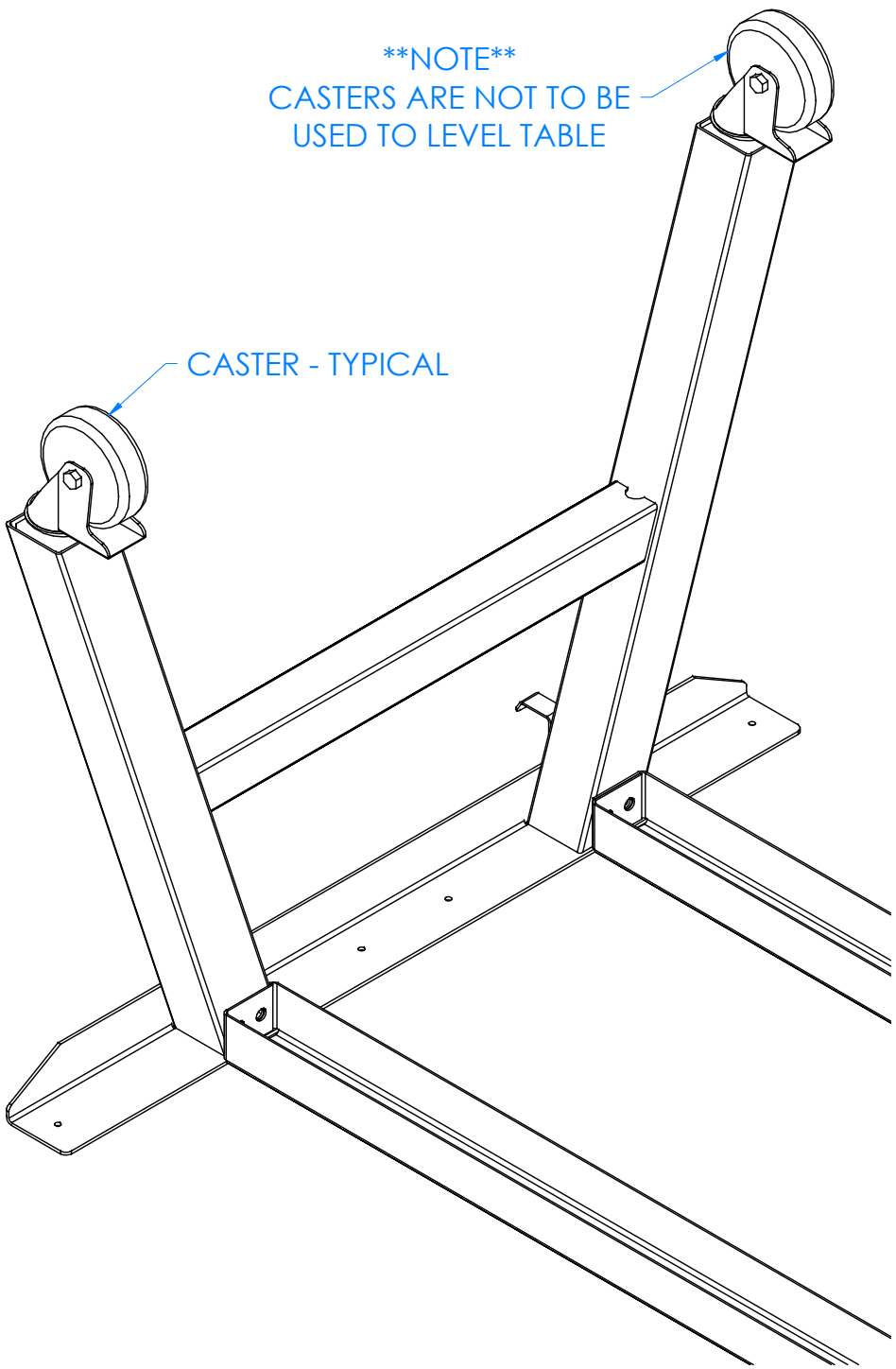
REV.	DESCRIPTION	DATE	NAME	ECN NO.
C	UPDATED SILICONE PROCEDURE	8/24/23	RJM	-
A	CREATED DRAWING	4/1/20	EMR	-
REVISION LEVEL				

DRAWING NUMBER:	SCALE:	SHEET:	REVISION:
<b>AFT SERIES TABLES</b>	NTS	3 OF 10	REV C

### HARDWARE REQUIRED FOR STEP

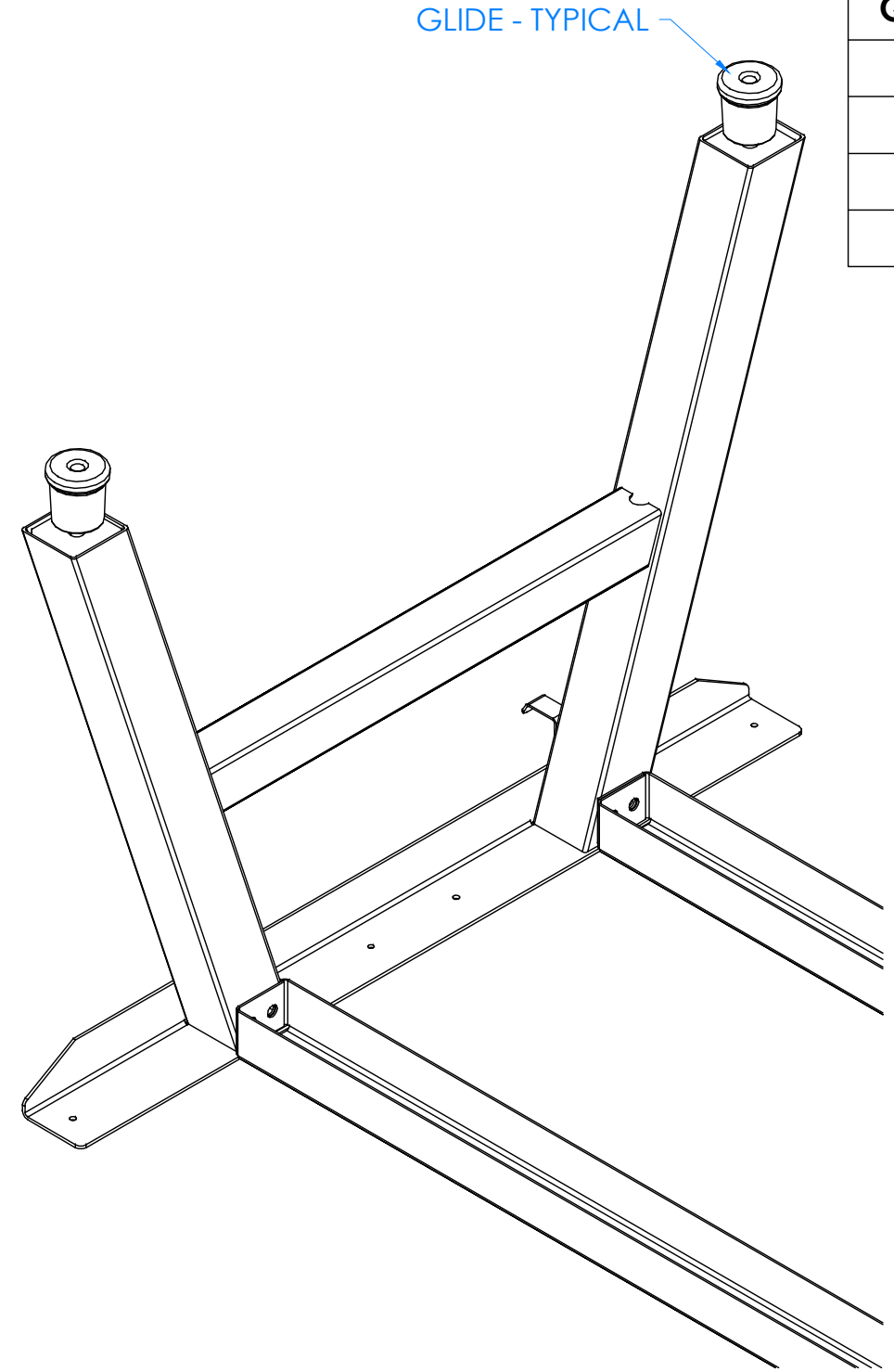
QTY	DESCRIPTION	PART NUMBER
4	CASTER - DUETTO	255813
4	CASTER - INDUSTRIAL	255721
4	LOCK WASHER - INDUSTRIAL CASTER	257150
4	GLIDE	255723

**\*\*NOTE\*\***  
 CASTERS ARE NOT TO BE  
 USED TO LEVEL TABLE



CASTER - TYPICAL

GLIDE - TYPICAL



STEP 2:

- a. ATTACH EITHER CASTERS OR GLIDES TO THE BOTTOM OF EACH LEG INSERT.
- b. MAKE SURE CASTERS ARE THREADED ALL THE WAY AND ARE FULLY TIGHTENED.
- c. IF YOU HAVE "INDUSTRIAL" CASTERS, MAKE SURE YOU APPLY LOCK WASHER (NOT SHOWN) TO CASTERS BEFORE ATTACHING TO LEGS!
- d. IF YOU HAVE "DUETTO" CASTERS (NOT SHOWN), TAKE WHEEL OFF FROM STEM AND TIGHTEN CASTER FULLY TO EACH LEG! PUT WHEEL BACK ON ONCE FINISHED.
- e. CASTERS ARE NOT TO BE USED TO LEVEL TABLE!

NOTE:

1.

ALL DIMENSIONS ARE IN INCHES UNLESS NOTED OTHERWISE DECIMALS: .X = ± .030 .XX = ± .020 .XXX = ± .010 ANGLES: = ± 1° CABINET SQUARENESS = ± .0625	DWN BY: EMR APR BY: APR BY:	DATE DWN: 4/1/20 DATE APR: DATE APR:
---	-----------------------------------	--



300 South Krueger Street  
 Suring, WI 54174  
 diversifiedwoodcrafts.com

CONFIDENTIAL:  
 ALL DESIGN RIGHTS RESERVED  
 THE INFORMATION, DATA, DESIGN, AND DRAWINGS EMBODIED IN THIS DOCUMENT AND ALL REPRODUCTIONS THEREOF ARE THE EXCLUSIVE PROPERTY OF DIVERSIFIED WOODCRAFTS, INC.

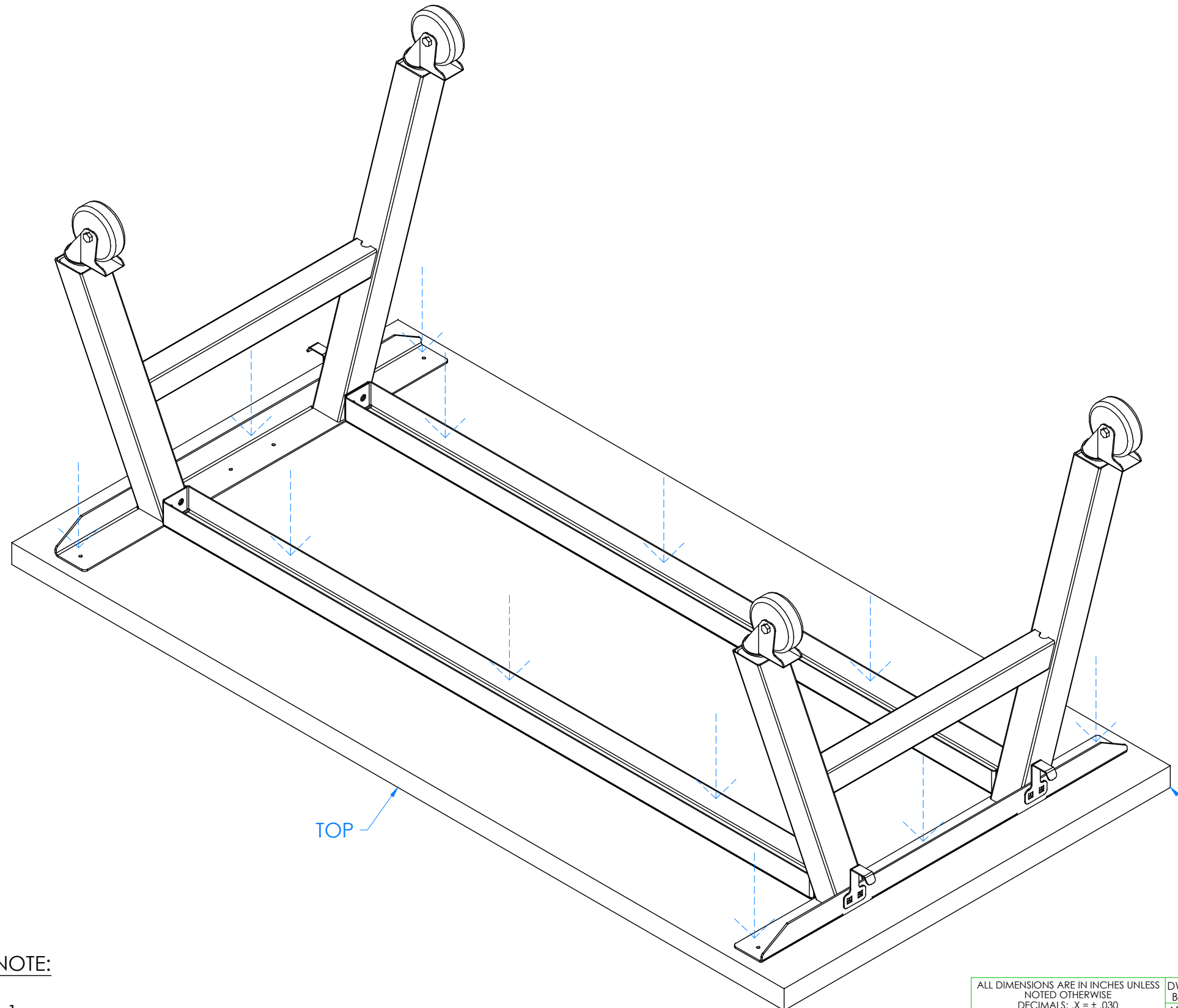
TITLE:  
**A-FRAME TABLES  
 ASSEMBLY INSTRUCTIONS**

REV.	DESCRIPTION	DATE	NAME	ECN NO.
C	UPDATED SILICONE PROCEDURE	8/24/23	RJM	-
A	CREATED DRAWING	4/1/20	EMR	-

REVISION LEVEL

THESE DOCUMENTS ARE SUPPLIED WITH THE UNDERSTANDING THAT THEY WILL NOT BE DISCLOSED TO THIRD PARTIES WITHOUT WRITTEN CONSENT OF DIVERSIFIED WOODCRAFTS, INC. ANY REPRODUCTION IN PART OR WHOLE WITHOUT WRITTEN CONSENT IS SUBJECT TO LEGAL ACTION.

DRAWING NUMBER: <b>AFT SERIES TABLES</b>	SCALE: NTS	SHEET: 4 OF 10	REVISION: REV C
---	---------------	-------------------	--------------------



### HARDWARE REQUIRED FOR STEP

QTY	DESCRIPTION	PART NUMBER
1	TOP	VARIES
VARIES	SCREWS - TOP	100369

STEP 3:

- a. IF YOU HAVE AN EPOXY OR PHENOLIC TOP, SKIP TO STEP 5.
- b. WITH PROPER OVERHANG (CENTERED), ATTACH FRAME TO TOP USING PROVIDED HARDWARE LISTED ABOVE.
- c. IF YOU HAVE A PLASTIC LAMINATE, SHOPTOP, OR BUTCHER BLOCK TOP, PRE-DRILL HOLES  $\frac{7}{8}$ " IN TOP USING A  $\frac{3}{16}$ " DRILL BIT TO PREVENT CRACKING.
- d. PLEASE MEASURE PROPER DEPTH!
- e. NOTE:  $\frac{7}{8}$ " IS ONLY TO BE USED FOR  $1\frac{1}{4}$ " OR THICKER TOPS!!

NOTE:  
1.

REV.	DESCRIPTION	DATE	NAME	ECN NO.
C	UPDATED SILICONE PROCEDURE	8/24/23	RJM	-
A	CREATED DRAWING	4/1/20	EMR	-

REVISION LEVEL

ALL DIMENSIONS ARE IN INCHES UNLESS NOTED OTHERWISE  
 DECIMALS: .X = ± .030  
 .XX = ± .020  
 .XXX = ± .010  
 ANGLES: = ± 1°  
 CABINET SQUARENESS = ± .0625

DWN BY:	EMR	DATE DWN:	4/1/20
APR BY:		DATE APR:	
APR BY:		DATE APR:	

CONFIDENTIAL:  
 ALL DESIGN RIGHTS RESERVED.  
 THE INFORMATION, DATA, DESIGN, AND DRAWINGS EMBODIED IN THIS DOCUMENT AND ALL REPRODUCTIONS THEREOF ARE THE EXCLUSIVE PROPERTY OF DIVERSIFIED WOODCRAFTS, INC.

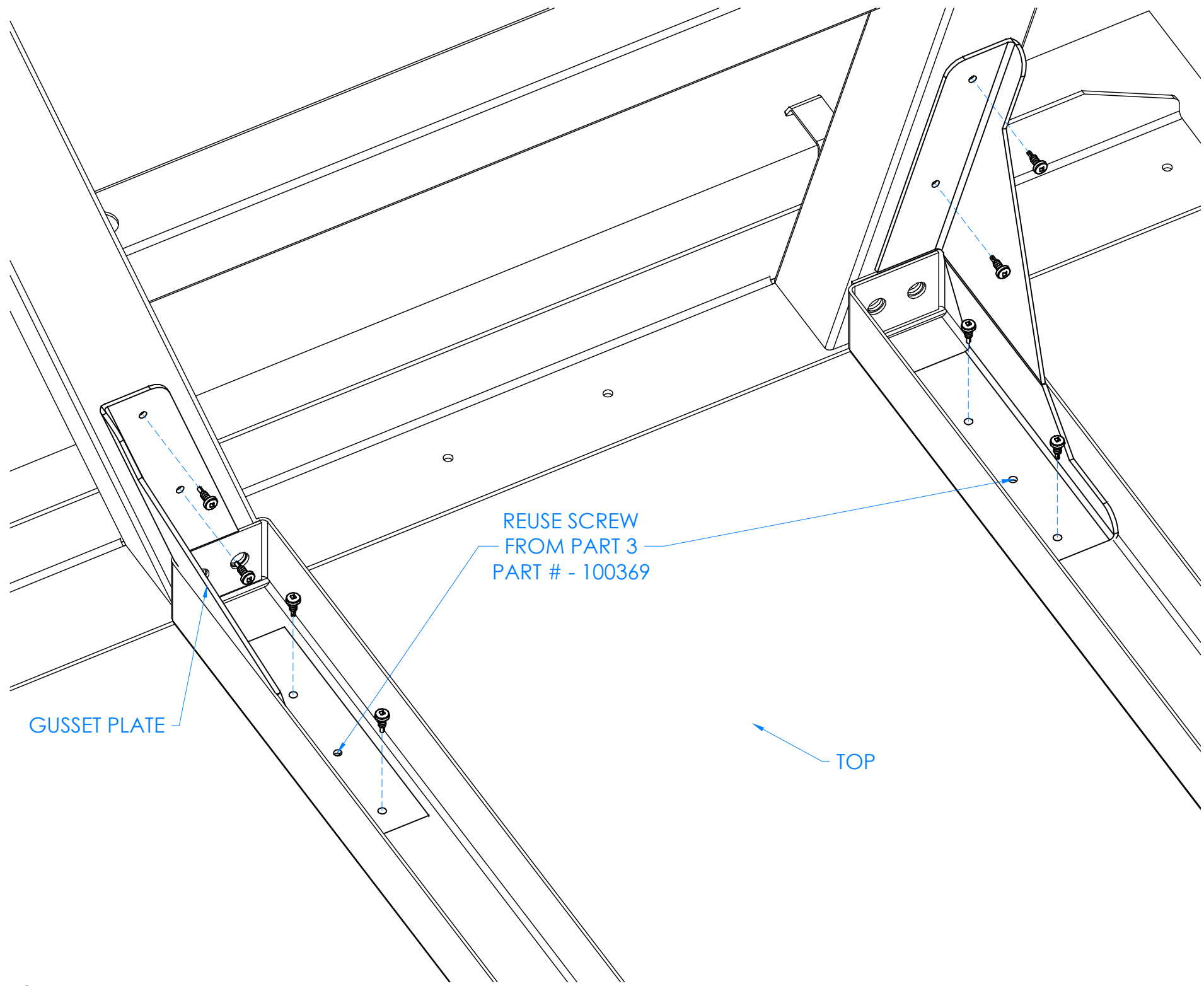
THESE DOCUMENTS ARE SUPPLIED WITH THE UNDERSTANDING THAT THEY WILL NOT BE DISCLOSED TO THIRD PARTIES WITHOUT WRITTEN CONSENT OF DIVERSIFIED WOODCRAFTS, INC. ANY REPRODUCTION IN PART OR WHOLE WITHOUT WRITTEN CONSENT IS SUBJECT TO LEGAL ACTION.



300 South Krueger Street  
 Suring, WI 54174  
 diversifiedwoodcrafts.com

TITLE:  
**A-FRAME TABLES  
 ASSEMBLY INSTRUCTIONS**

DRAWING NUMBER:	SCALE:	SHEET:	REVISION:
<b>AFT SERIES TABLES</b>	NTS	5 OF 10	REV C



HARDWARE REQUIRED FOR STEP		
QTY	DESCRIPTION	PART NUMBER
2	LEFT GUSSET	258708
2	RIGHT GUSSET	258709
2	SCREWS - GUSSET	258789

STEP 4:

- a. ATTACH GUSSETS TO STRETCHERS AND LEGS USING PROVIDED HARDWARE LISTED ABOVE.
- b. REPEAT FOR BOTH SIDES.

NOTE:

1.

ALL DIMENSIONS ARE IN INCHES UNLESS NOTED OTHERWISE DECIMALS: .X = ± .030 .XX = ± .020 .XXX = ± .010 ANGLES: = ± 1° CABINET SQUARENESS = ± .0625	DWN BY:	EMR	DATE DWN:	4/1/20
	APR BY:		DATE APR:	
	APR BY:		DATE APR:	
	APR BY:		DATE APR:	



300 South Krueger Street  
Suring, WI 54174  
diversifiedwoodcrafts.com

CONFIDENTIAL:  
ALL DESIGN RIGHTS RESERVED.  
THE INFORMATION, DATA, DESIGN, AND DRAWINGS EMBODIED IN THIS DOCUMENT AND ALL REPRODUCTIONS THEREOF ARE THE EXCLUSIVE PROPERTY OF DIVERSIFIED WOODCRAFTS, INC.

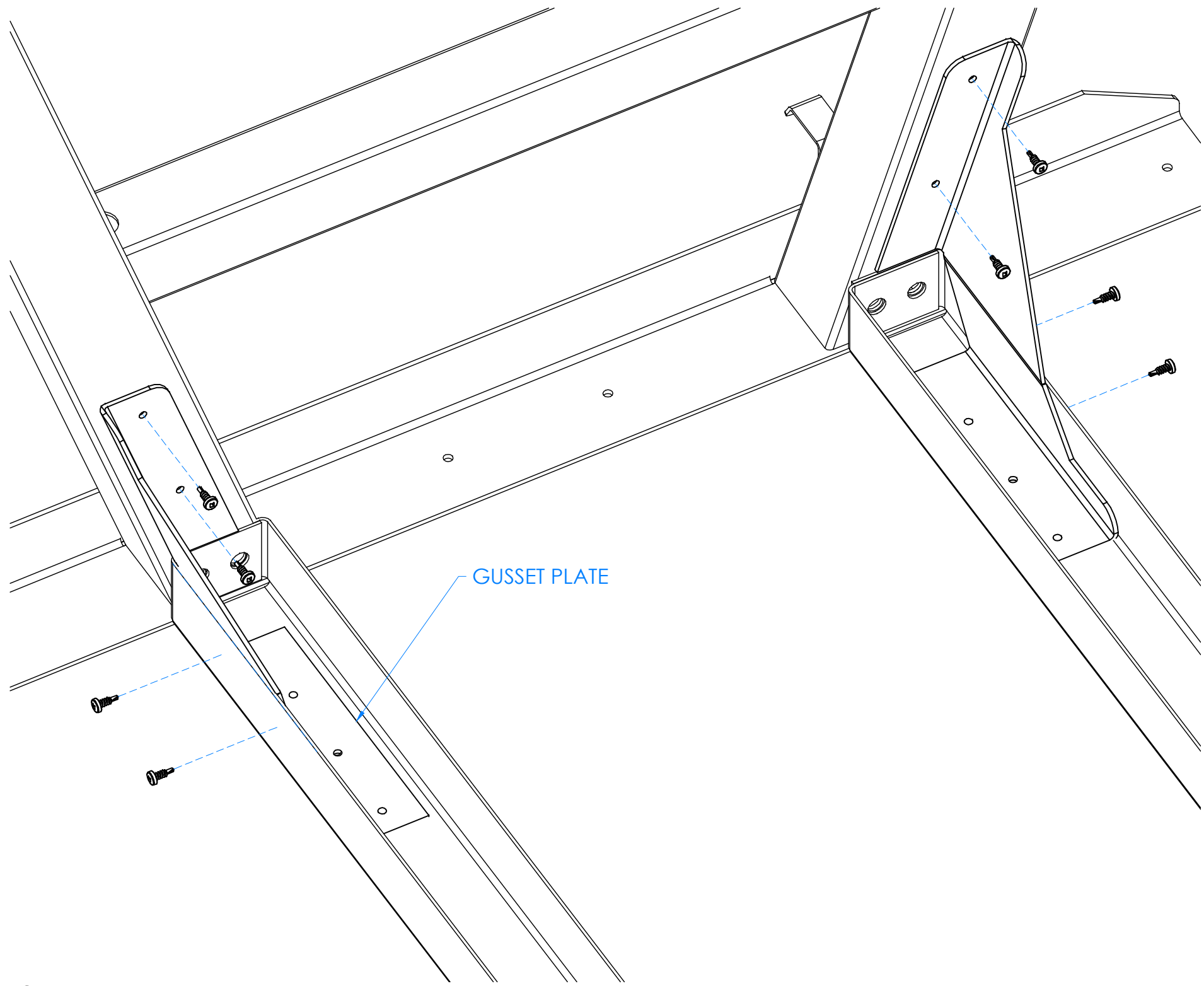
TITLE:  
**A-FRAME TABLES  
ASSEMBLY INSTRUCTIONS**

REV.	DESCRIPTION	DATE	NAME	ECN NO.
C	UPDATED SILICONE PROCEDURE	8/24/23	RJM	-
A	CREATED DRAWING	4/1/20	EMR	-

REVISION LEVEL

THESE DOCUMENTS ARE SUPPLIED WITH THE UNDERSTANDING THAT THEY WILL NOT BE DISCLOSED TO THIRD PARTIES WITHOUT WRITTEN CONSENT OF DIVERSIFIED WOODCRAFTS, INC. ANY REPRODUCTION IN PART OR WHOLE WITHOUT WRITTEN CONSENT IS SUBJECT TO LEGAL ACTION.

DRAWING NUMBER:	SCALE:	SHEET:	REVISION:
<b>AFT SERIES TABLES</b>	NTS	6 OF 10	REV C



HARDWARE REQUIRED FOR STEP		
QTY	DESCRIPTION	PART NUMBER
2	LEFT GUSSET	258708
2	RIGHT GUSSET	258709
2	SCREWS - GUSSET	258789

STEP 5:

- a. IF YOU DO NOT HAVE AN EPOXY OR PHENOLIC TOP, SKIP TO STEP 7.
- b. ATTACH GUSSETS TO SIDE OF STRETCHERS AND LEGS USING PROVIDED HARDWARE LISTED ABOVE.
- c. PRE DRILL HOLES WITH  $\frac{3}{16}$ " DRILL BIT IF NECESSARY.
- d. REPEAT FOR BOTH SIDES.

NOTE:

1.

ALL DIMENSIONS ARE IN INCHES UNLESS NOTED OTHERWISE DECIMALS: .X = ± .030 .XX = ± .020 .XXX = ± .010 ANGLES: = ± 1° CABINET SQUARENESS = ± .0625	DWN BY:	EMR	DATE DWN:	4/1/20
	APR BY:		DATE APR:	
	APR BY:		DATE APR:	
	APR BY:		DATE APR:	



300 South Krueger Street  
Suring, WI 54174  
diversifiedwoodcrafts.com

CONFIDENTIAL:  
ALL DESIGN RIGHTS RESERVED.  
THE INFORMATION, DATA, DESIGN, AND DRAWINGS EMBODIED IN THIS DOCUMENT AND ALL REPRODUCTIONS THEREOF ARE THE EXCLUSIVE PROPERTY OF DIVERSIFIED WOODCRAFTS, INC.

TITLE:  
**A-FRAME TABLES  
ASSEMBLY INSTRUCTIONS**

REV.	DESCRIPTION	DATE	NAME	ECN NO.
C	UPDATED SILICONE PROCEDURE	8/24/23	RJM	-
A	CREATED DRAWING	4/1/20	EMR	-

REVISION LEVEL

THESE DOCUMENTS ARE SUPPLIED WITH THE UNDERSTANDING THAT THEY WILL NOT BE DISCLOSED TO THIRD PARTIES WITHOUT WRITTEN CONSENT OF DIVERSIFIED WOODCRAFTS, INC. ANY REPRODUCTION IN PART OR WHOLE WITHOUT WRITTEN CONSENT IS SUBJECT TO LEGAL ACTION.

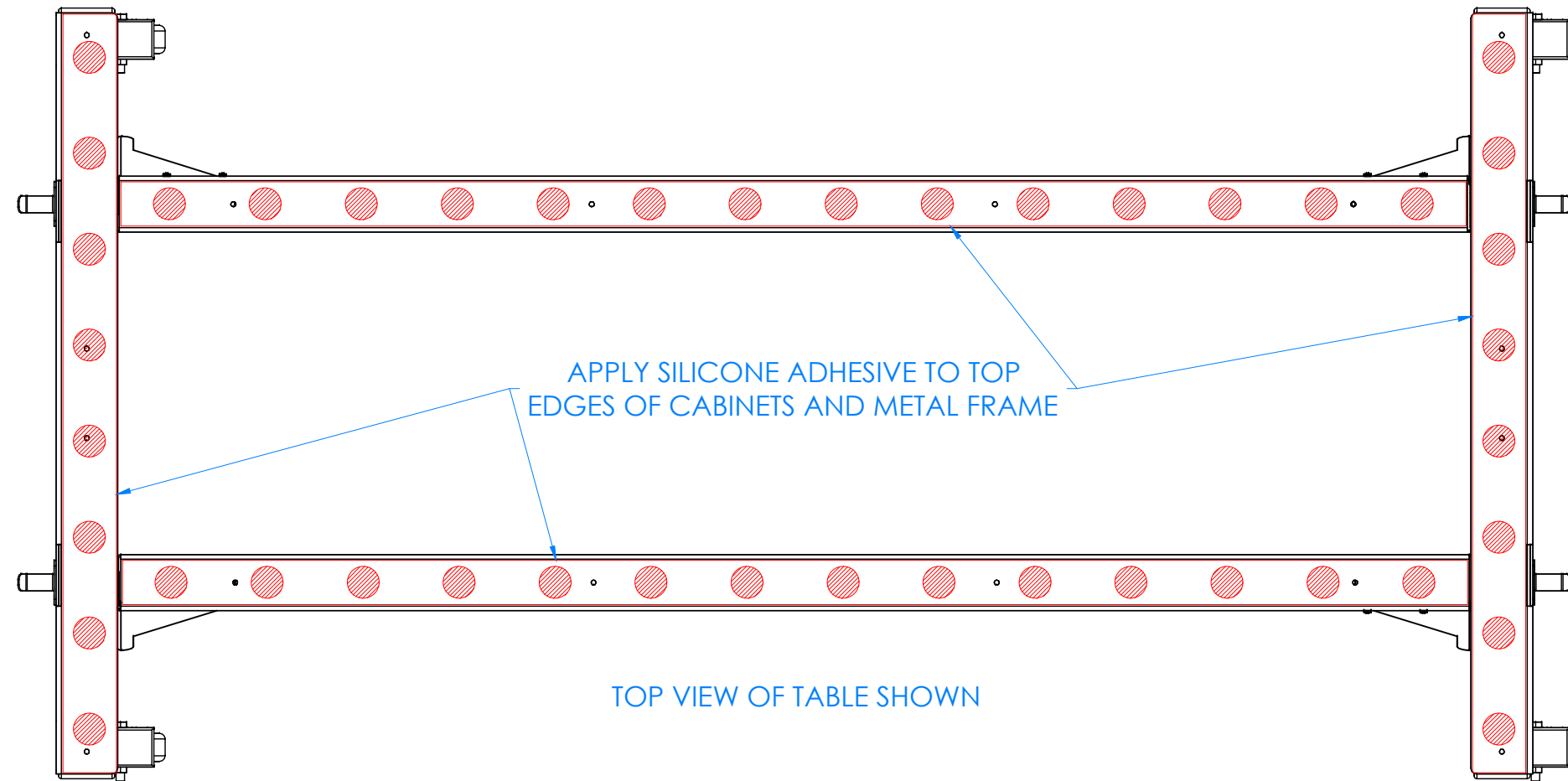
DRAWING NUMBER:	SCALE:	SHEET:	REVISION:
<b>AFT SERIES TABLES</b>	NTS	7 OF 10	REV C

STEP 6:

- a. APPLY SILICONE ADHESIVE TO TOP EDGES OF METAL FRAME.
- b. APPLY SILICONE ADHESIVE IN DOT PATTERN LIKE SHOWN BELOW FOR BEST RESULTS.
- c. PLACE TOP ON METAL FRAME WITH PROPER OVERHANG (CENTERED ON WORKSTATION).
- d. CLAMP ON TOP TO METAL FRAME TO REMOVE ANY WARP USING SHIMS AND C-CLAMPS, IF NEEDED, WHEN ALIGNING THE TOP (DO THIS BEFORE ADHESIVE SETS UP).
- e. LET CURE FOR 6-12 HOURS.

**HARDWARE REQUIRED FOR STEP**

QTY	DESCRIPTION	PART NUMBER
1	TOP	VARIABLES
1	SILICONE	100711



NOTE:

1.

ALL DIMENSIONS ARE IN INCHES UNLESS NOTED OTHERWISE DECIMALS: .X = ± .030 .XX = ± .020 .XXX = ± .010 ANGLES: = ± 1° CABINET SQUARENESS = ± .0625	DWN BY:	EMR	DATE DWN:	4/1/20
	APR BY:		DATE APR:	
	APR BY:		DATE APR:	
	APR BY:		DATE APR:	



300 South Krueger Street  
 Suring, WI 54174  
 diversifiedwoodcrafts.com

CONFIDENTIAL:  
 ALL DESIGN RIGHTS RESERVED.  
 THE INFORMATION, DATA, DESIGN, AND DRAWINGS EMBODIED IN THIS DOCUMENT AND ALL REPRODUCTIONS THEREOF ARE THE EXCLUSIVE PROPERTY OF DIVERSIFIED WOODCRAFTS, INC.

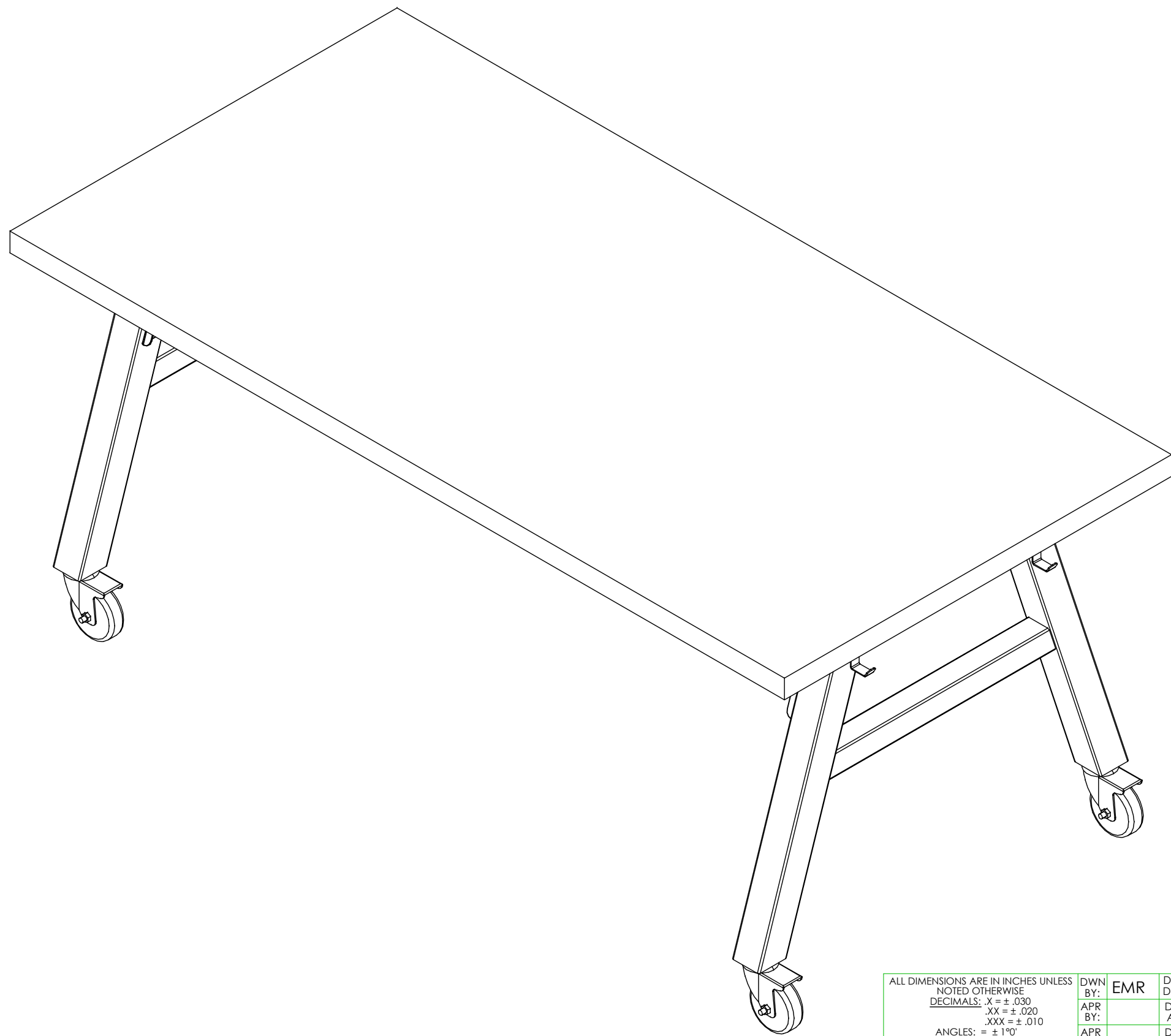
TITLE:  
**A-FRAME TABLES  
 ASSEMBLY INSTRUCTIONS**

THESE DOCUMENTS ARE SUPPLIED WITH THE UNDERSTANDING THAT THEY WILL NOT BE DISCLOSED TO THIRD PARTIES WITHOUT WRITTEN CONSENT OF DIVERSIFIED WOODCRAFTS, INC. ANY REPRODUCTION IN PART OR WHOLE WITHOUT WRITTEN CONSENT IS SUBJECT TO LEGAL ACTION.

DRAWING NUMBER:	SCALE:	SHEET:	REVISION:
<b>AFT SERIES TABLES</b>	NTS	8 OF 10	REV C

REV.	DESCRIPTION	DATE	NAME	ECN NO.
C	UPDATED SILICONE PROCEDURE	8/24/23	RJM	-
A	CREATED DRAWING	4/1/20	EMR	-
REVISION LEVEL				





STEP 7:

- a. WITH HELP FROM ANOTHER PERSON, TURN TABLE OVER ONTO CASTERS/GLIDES.
- b. PLACE TABLE IN DESIRED LOCATION.

NOTE:

1.

COMPLETE UNIT SHOWN

REV.	DESCRIPTION	DATE	NAME	ECN NO.
C	UPDATED SILICONE PROCEDURE	8/24/23	RJM	-
A	CREATED DRAWING	4/1/20	EMR	-
REVISION LEVEL				

ALL DIMENSIONS ARE IN INCHES UNLESS NOTED OTHERWISE  
 DECIMALS: .X = ± .030  
 .XX = ± .020  
 .XXX = ± .010  
 ANGLES: = ± 1°  
 CABINET SQUARENESS = ± .0625

DWN BY:	EMR	DATE DWN:	4/1/20
APR BY:		DATE APR:	
APR BY:		DATE APR:	

CONFIDENTIAL:  
 ALL DESIGN RIGHTS RESERVED  
 THE INFORMATION, DATA, DESIGN, AND DRAWINGS EMBODIED IN THIS DOCUMENT AND ALL REPRODUCTIONS THEREOF ARE THE EXCLUSIVE PROPERTY OF DIVERSIFIED WOODCRAFTS, INC.

THESE DOCUMENTS ARE SUPPLIED WITH THE UNDERSTANDING THAT THEY WILL NOT BE DISCLOSED TO THIRD PARTIES WITHOUT WRITTEN CONSENT OF DIVERSIFIED WOODCRAFTS, INC. ANY REPRODUCTION IN PART OR WHOLE WITHOUT WRITTEN CONSENT IS SUBJECT TO LEGAL ACTION.



300 South Krueger Street  
 Suring, WI 54174  
 diversifiedwoodcrafts.com

TITLE:  
**A-FRAME TABLES  
 ASSEMBLY INSTRUCTIONS**

DRAWING NUMBER: <b>AFT SERIES TABLES</b>	SCALE: NTS	SHEET: 9 OF 10	REVISION: REV C
---	---------------	-------------------	--------------------

PRODUCT

# Butcher Block (Varnished Tops) *Maintenance & Repair*

## SPILLS

- Be sure any spills are cleaned up immediately. Excessive moisture and certain chemicals allowed to stand on a finished surface can cause damage.
- Clean spills or soiled areas with a damp cloth and dry thoroughly.
- Periodically, apply a coat of spray wax, paste wax, or lemon oil to finished surface. This will enhance and protect the finish and insure a moisture barrier is intact in the event the finish becomes scratched or worn.

## SCRATCHES & DENTS

- Minor scratches and dents can be easily repaired by rubbing the affected area with steel wool or fine grit (#220) sandpaper. Remember, when rubbing or sanding always sand with the grain of the wood. Feather edges of repair in to the surrounding area. Remove all dust and residue and apply a coat of clear lacquer type finish or paint. Clear lacquer type finish can be purchased at most paint or hardware stores. Small cans of touch-up paint are available from your dealer or representative. Paint colors can easily be matched at most paint stores. Confine touch-up only to the area that was sanded. Remember, follow manufacturing directions on product label when refinishing.
- Major scratches and gouges where large portions of wood have been removed or damaged should be handled by a professional experienced in furniture repair with the proper tools and equipment.

## MINERAL STREAKS

- Mineral Streaks—Natural Coloring of wood due to mineral deposits in the tree. Repair is not required and will add to the individuality of your table. Sizes can range up to a 1/4" wide and up to 3" in length.

## HUMIDITY GUIDELINES

Your Butcher Block was kiln-dried to an initial moisture content of 7.6%. In order to maintain the beauty and integrity of your Butcher Block, it is recommended that special care be taken to keep the relative humidity and temperature within your home or warehouse in the highlighted range. This will limit the amount of expansion and contraction in your natural wood product and minimize the risk of environmental damage.

- **Environment Acclimation:** Environmental damage does not constitute defective product. Allowing your Butcher Block to acclimate to the environment for at least 72 hours prior to installation, following recommended installation practices that allow your Butcher Block to move with the conditions and controlling the environment itself are all key factors that determine the life of your product.
- **Temperature Changes:** It is important to note that as winter temperatures drop, so does relative humidity in the air. The heaters come on which further dries the air. Keeping the area humidified to an acceptable level usually becomes necessary during the winter months. The opposite is true in spring and summer as humidity rises, dehumidifiers and air conditioners become the method of control.

		RELATIVE HUMIDITY %																	
		5	10	15	20	25	30	35	40	45	50	55	60	65	70	75	80	85	90
TEMPERATURE (°F)	30	1.4	2.6	3.7	4.6	5.5	6.3	7.1	7.8	8.7	9.5	10.4	11.3	12.4	13.5	14.9	17	18.5	21
	40	1.4	2.6	3.7	4.6	5.5	6.3	7.1	7.8	8.7	9.5	10.4	11.3	12.4	13.5	14.9	17	18.5	21
	50	1.4	2.6	3.6	4.6	5.5	6.3	7.1	7.9	8.7	9.5	10.3	11.2	12.3	13.4	14.8	16	18.4	20.9
	60	1.3	2.5	3.6	4.6	5.4	6.2	7	7.8	8.6	9.4	10.2	11.1	12.1	13.3	14.6	16	18.2	20.7
	70	1.3	2.5	3.5	4.5	5.4	6.2	6.9	7.7	8.5	9.2	10.1	11	12	13.1	14.4	16	17.9	20.5
	80	1.3	2.4	3.5	4.4	5.3	6.1	6.8	7.6	8.3	9.1	9.9	10.8	11.7	12.9	14.2	16	17.7	20.2
	90	1.2	2.3	3.4	4.3	5.1	5.9	6.7	7.4	8.1	8.9	9.7	10.5	11.85	12.6	13.9	15	17.3	19.8
100	1.2	2.3	3.3	4.2	5	5.8	6.5	7.2	7.9	8.7	9.5	10.3	11.2	12.3	13.6	15	17	19.5	

*Example: If conditions in a warehouse are 60% relative humidity at 50 degrees Fahrenheit Dry wood will pick up moisture until 11.2% is reached, regardless of wood species and initial moisture content.*