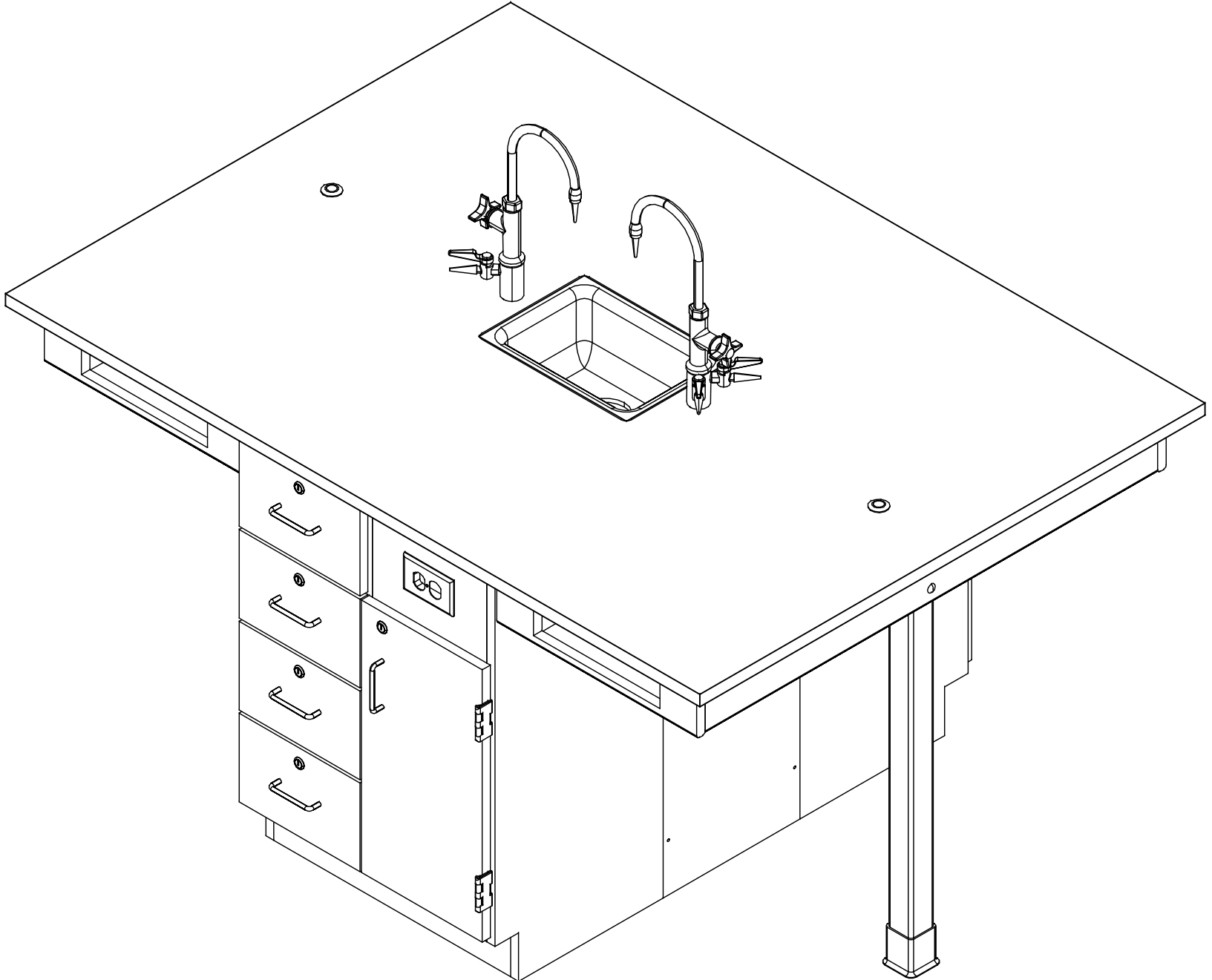


STUDENT SERVICE ISLAND-DOUBLE

C2410, C2410F, C2610, & C2610F SERIES
ASSEMBLY INSTRUCTIONS



NOTE:

1. MODEL VIEWS MAY NOT REPRESENT EXACT MODEL PURCHASED

ALL DIMENSIONS ARE IN INCHES UNLESS NOTED OTHERWISE
 DECIMALS: .X = ± .030
 .XX = ± .020
 .XXX = ± .010
 ANGLES: = ± 1°
 CABINET SQUARENESS = ± .0625

DWN BY:	EMR	DATE DWN:	10/31/16
APR BY:		DATE APR:	
APR BY:		DATE APR:	



300 South Krueger Street
Suring, WI 54174
diversifiedwoodcrafts.com

CONFIDENTIAL:
 ALL DESIGN RIGHTS RESERVED.
 THE INFORMATION, DATA, DESIGN, AND DRAWINGS EMBODIED IN THIS DOCUMENT AND ALL REPRODUCTIONS THEREOF ARE THE EXCLUSIVE PROPERTY OF DIVERSIFIED WOODCRAFTS, INC.

TITLE:
STUDENT SERVICE ISLAND-DOUBLE ASSEMBLY INSTRUCTIONS

REV.	DESCRIPTION	DATE	NAME	ECN NO.
C	UPDATED SILICONE PROCEDURE	8/24/23	RJM	-
A	CREATED DRAWING	10/31/16	EMR	-
REVISION LEVEL				

THESE DOCUMENTS ARE SUPPLIED WITH THE UNDERSTANDING THAT THEY WILL NOT BE DISCLOSED TO THIRD PARTIES WITHOUT WRITTEN CONSENT OF DIVERSIFIED WOODCRAFTS, INC. ANY REPRODUCTION IN PART OR WHOLE WITHOUT WRITTEN CONSENT IS SUBJECT TO LEGAL ACTION.

DRAWING NUMBER:	SCALE:	SHEET:	REVISION:
STUDENT SERVICE ISLAND	NTS	1 OF 14	REV C

TOOLS REQUIRED

½" WRENCH
½" SOCKET AND TORQUE WRENCH - OPTIONAL
DRILL
⅛" DRILL BIT
CONTACT CEMENT
SCREW DRIVER
C-CLAMPS
SHIM STOCK (IF NEEDED)

ASSEMBLY COMPONENTS

ITEMS INCLUDED	PART #	PART DESCRIPTION	QTY
TOP	VARIES	TOP (STYLE VARIES), 1.00 X 48 X 66	1
CABINET W/ REMOVABLE PANEL CLEATS ATTACHED	N/A	CABINET - 24"W X 35"H X 16"D CLEATS - 1"W X 34.50"H X 0.75"D	2
REMOVABLE PANELS	N/A	REM PANELS - 13"W X 35"H X 0.75"D	2
SCREWS - REMOVABLE PANELS	100495	SCREW, #10X1-½ PHIL TR. SMS,ZN	12
APRON ASSEMBLY	N/A	APRON ASSEMBLY (FACTORY ASSEMBLED)	2
SILICONE	100711	SILICONE,SEALANT,CLEAR	1
LEGS	500101	LEG,OAK 2.25X2.25X34.25	2
LEG LEVELER	100079	LEG LEVELER,BLK BASE 1	2
LEG BOOT	100076	LEG BOOT,BLK RUBBER	2
CARRIAGE BOLT	227159	BOLT,5/16X3-1/2,CARRIAGE	4
HEX NUT	100044	NUT,HEX 5/16-18 STEEL ZINC	4
WASHER	100451	WASHER,5/16 FLAT ZINC PLATED	4
RUBBER BASE MOLDING	100283	RUBBER BASE MOLDING(SOLD BY FOOT)	11
STAINLESS STEEL CORNERS	100057	CORNERS-STAINLESS STEEL,BASE	4
SCREWS - BASE	100064	SCREW,#6X½ PTH SMS SS SCREW	16
ELECTRICAL BOX	100033	ELECTRICAL BOX 3.00X2X2.50 DEEP	1
ELECTRICAL OUTLET	100034	ELEC,OUTLET,GFI,20A 125V,BLK	1
L BRACKET	100355	BRACKET,RAIL 1.25X1.25X4.25	4
SCREWS - L BRACKET	100649	SCREW,#8X¾ PHIL TRUSS HEAD SMS	16

NOTE:

- TOPS ARE EITHER PHENOLIC OR EPOXY.


REV.	DESCRIPTION	DATE	NAME	ECN NO.
C	UPDATED SILICONE PROCEDURE	8/24/23	RJM	-
A	CREATED DRAWING	10/31/16	EMR	-
REVISION LEVEL				

ALL DIMENSIONS ARE IN INCHES UNLESS NOTED OTHERWISE
 DECIMALS: .X = ± .030
 .XX = ± .020
 .XXX = ± .010
 ANGLES: = ± 1°
 CABINET SQUARENESS = ± .0625

DWN BY: EMR DATE DWN: 10/31/16
 APR BY: DATE APR:
 APR BY: DATE APR:

CONFIDENTIAL:
 ALL DESIGN RIGHTS RESERVED
 THE INFORMATION, DATA, DESIGN, AND DRAWINGS EMBODIED IN THIS DOCUMENT AND ALL REPRODUCTIONS THEREOF ARE THE EXCLUSIVE PROPERTY OF DIVERSIFIED WOODCRAFTS, INC.

THESE DOCUMENTS ARE SUPPLIED WITH THE UNDERSTANDING THAT THEY WILL NOT BE DISCLOSED TO THIRD PARTIES WITHOUT WRITTEN CONSENT OF DIVERSIFIED WOODCRAFTS, INC. ANY REPRODUCTION IN PART OR WHOLE WITHOUT WRITTEN CONSENT IS SUBJECT TO LEGAL ACTION.



300 South Krueger Street
 Suring, WI 54174
 diversifiedwoodcrafts.com

TITLE:
 STUDENT SERVICE ISLAND-DOUBLE TOOLS AND ASSEMBLY COMPONENTS

DRAWING NUMBER: STUDENT SERVICE ISLAND SCALE: NTS SHEET: 2 OF 14 REVISION: REV C

ASSEMBLY COMPONENTS


ITEMS INCLUDED	PART #	PART DESCRIPTION	QTY
FIXTURE - FAUCETS	100074-BKR	FIXTURE,L65-WSA-DIV (MULTI-SERVICE)	2
FIXTURE - SINK	100691	SINK,EPOXY L3,BLK	1
FIXTURE - SINK TRAP	100056	SINK TRAP,PLATIC ADJUSTABLE	1
FIXTURE - SINK OUTLET/STRAINER	254047	SINK OUTLET TAIL PIECE/INTEGRAL STRAINER,BLK	1
ROD SOCKETS	206505	ROD SOCKET ASSY,SOCKET,WASHER,NUT	2

NOTE:

- **XX** INDICATES ITEMS USED ONLY FOR UNITS WITH A SINK OR FIXTURES.

REV.	DESCRIPTION	DATE	NAME	ECN NO.
C	UPDATED SILICONE PROCEDURE	8/24/23	RJM	-
A	CREATED DRAWING	10/31/16	EMR	-
REVISION LEVEL				

<p>ALL DIMENSIONS ARE IN INCHES UNLESS NOTED OTHERWISE DECIMALS: .X = ± .030 .XX = ± .020 .XXX = ± .010 ANGLES: = ± 1° CABINET SQUARENESS = ± .0625</p>	<table border="1" style="width: 100%; border-collapse: collapse;"> <tr> <td>DWN BY:</td> <td>EMR</td> <td>DATE DWN:</td> <td>10/31/16</td> </tr> <tr> <td>APR BY:</td> <td></td> <td>DATE APR:</td> <td></td> </tr> <tr> <td>APR BY:</td> <td></td> <td>DATE APR:</td> <td></td> </tr> </table>	DWN BY:	EMR	DATE DWN:	10/31/16	APR BY:		DATE APR:		APR BY:		DATE APR:	
DWN BY:	EMR	DATE DWN:	10/31/16										
APR BY:		DATE APR:											
APR BY:		DATE APR:											
<p>CONFIDENTIAL: ALL DESIGN RIGHTS RESERVED THE INFORMATION, DATA, DESIGN, AND DRAWINGS EMBODIED IN THIS DOCUMENT AND ALL REPRODUCTIONS THEREOF ARE THE EXCLUSIVE PROPERTY OF DIVERSIFIED WOODCRAFTS, INC.</p>													
<p>THESE DOCUMENTS ARE SUPPLIED WITH THE UNDERSTANDING THAT THEY WILL NOT BE DISCLOSED TO THIRD PARTIES WITHOUT WRITTEN CONSENT OF DIVERSIFIED WOODCRAFTS, INC. ANY REPRODUCTION IN PART OR WHOLE WITHOUT WRITTEN CONSENT IS SUBJECT TO LEGAL ACTION.</p>													



300 South Krueger Street
 Suring, WI 54174
 diversifiedwoodcrafts.com

TITLE: STUDENT SERVICE ISLAND-DOUBLE TOOLS AND ASSEMBLY COMPONENTS

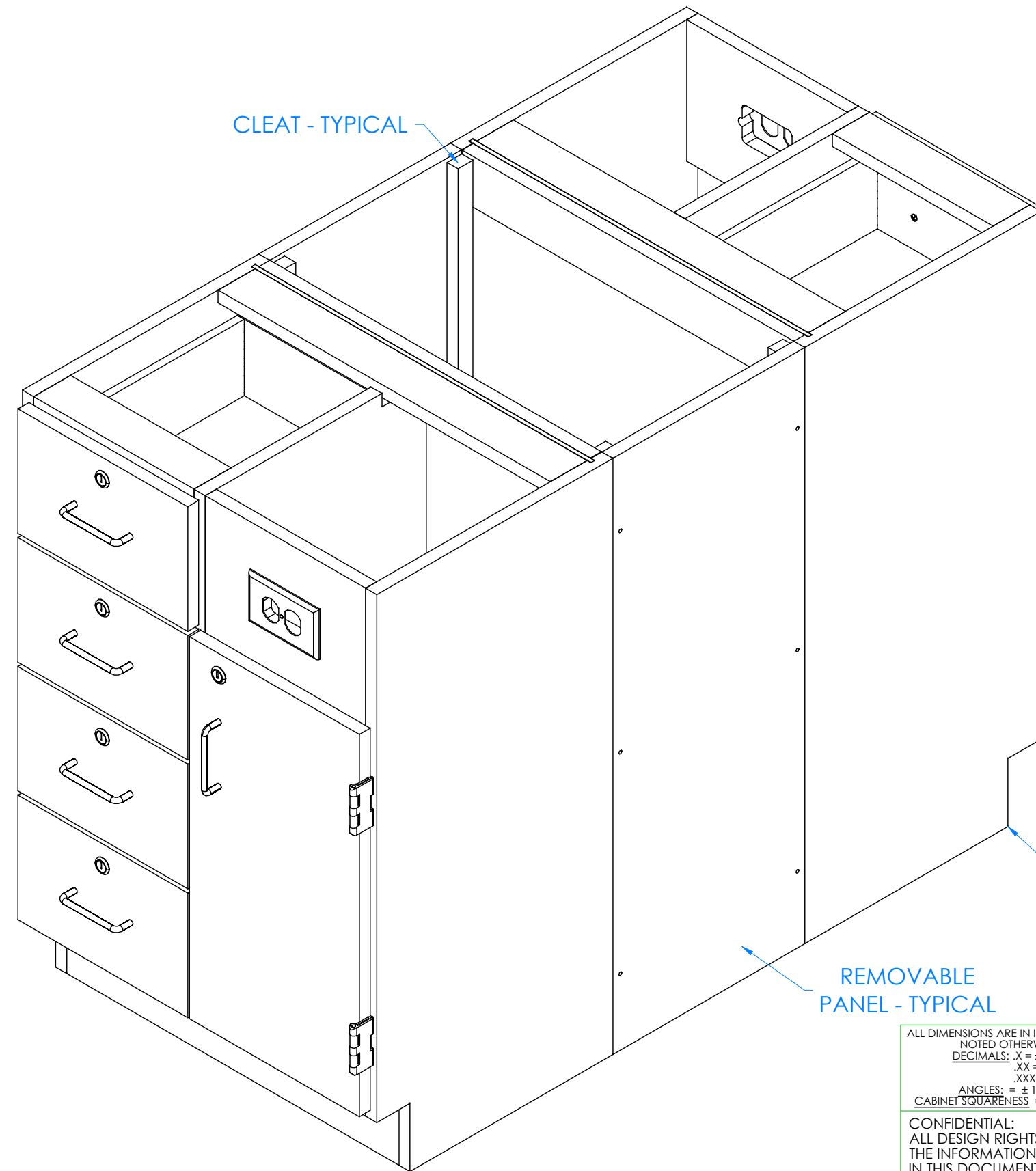
DRAWING NUMBER:	SCALE:	SHEET:	REVISION:
STUDENT SERVICE ISLAND	NTS	3 OF 14	REV C

HARDWARE REQUIRED FOR STEP

QTY	DESCRIPTION	PART NUMBER
2	CABINET	N/A
2	REMOVABLE PANELS	N/A
12	SCREWS - REMOVABLE PANELS	100495

STEP 1:

- a. PLACE CABINETS BACK TO BACK IN DESIRED LOCATION.
- b. IF YOU HAVE A UNIT WITH SINK/FIXTURES, PLACE CABINETS OVER UTILITY HOOK-UPS.
- c. LEVEL CABINETS.
- d. ATTACH TO FLOOR.
- e. ATTACH REMOVABLE PANELS WITH HARDWARE PROVIDED TO CLEATS LOCATED ON BACK OF CABINETS.
- f. PRE-DRILL HOLES IN CLEAT TO PREVENT CRACKING.



NOTE:

1.

ALL DIMENSIONS ARE IN INCHES UNLESS NOTED OTHERWISE	DWN BY: EMR	DATE DWN: 10/31/16
DECIMALS: .X = ± .030	APR BY:	DATE APR:
.XX = ± .020	APR BY:	DATE APR:
.XXX = ± .010	APR BY:	DATE APR:
ANGLES: = ± 1°		
CABINET SQUARENESS = ± .0625		

CONFIDENTIAL:
 ALL DESIGN RIGHTS RESERVED.
 THE INFORMATION, DATA, DESIGN, AND DRAWINGS EMBODIED IN THIS DOCUMENT AND ALL REPRODUCTIONS THEREOF ARE THE EXCLUSIVE PROPERTY OF DIVERSIFIED WOODCRAFTS, INC.

THESE DOCUMENTS ARE SUPPLIED WITH THE UNDERSTANDING THAT THEY WILL NOT BE DISCLOSED TO THIRD PARTIES WITHOUT WRITTEN CONSENT OF DIVERSIFIED WOODCRAFTS, INC. ANY REPRODUCTION IN PART OR WHOLE WITHOUT WRITTEN CONSENT IS SUBJECT TO LEGAL ACTION.



300 South Krueger Street
 Suring, WI 54174
 diversifiedwoodcrafts.com

TITLE:
STUDENT SERVICE ISLAND-DOUBLE ASSEMBLY INSTRUCTIONS

REV.	DESCRIPTION	DATE	NAME	ECN NO.
C	UPDATED SILICONE PROCEDURE	8/24/23	RJM	-
A	CREATED DRAWING	10/31/16	EMR	-

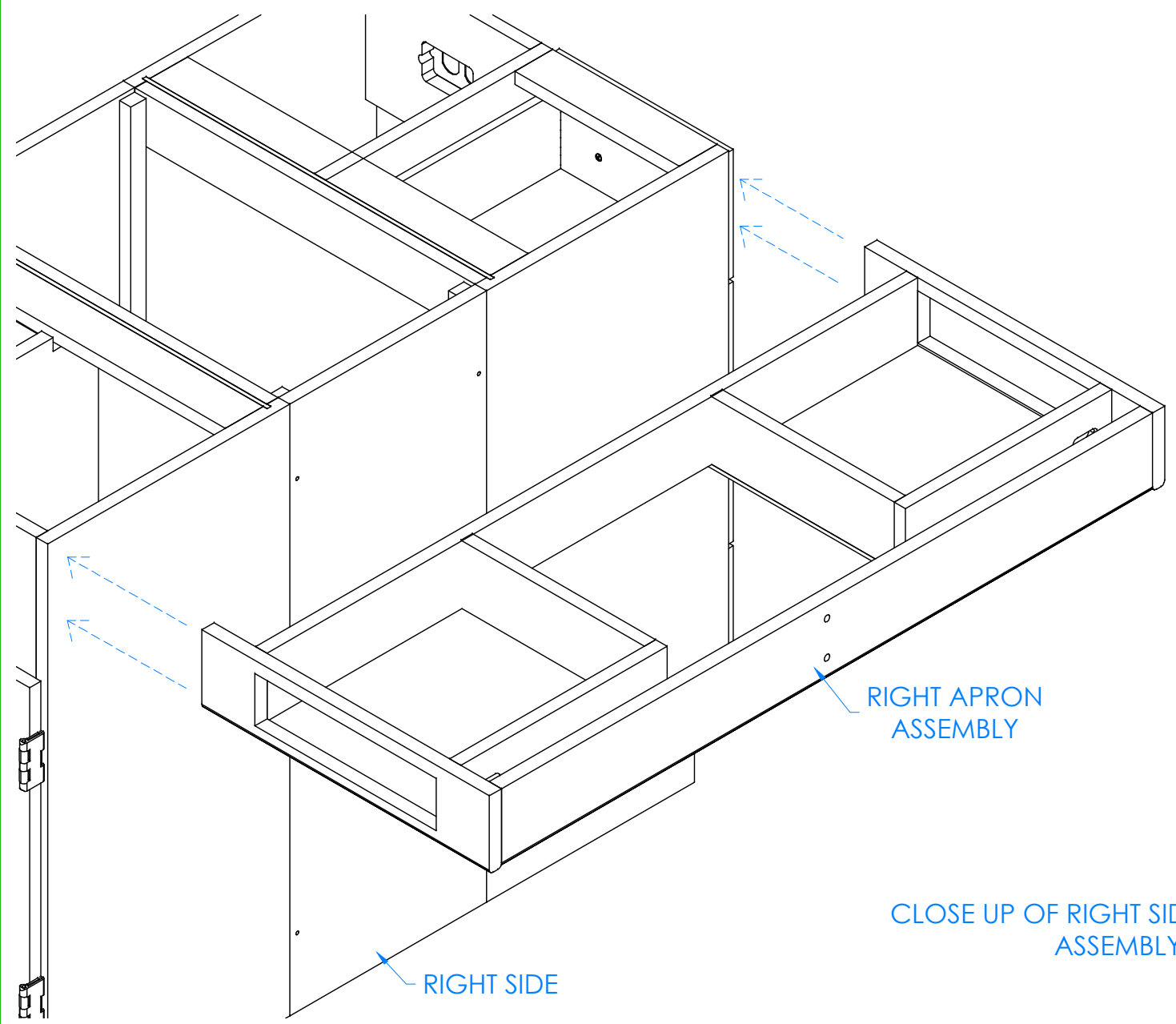
REVISION LEVEL

DRAWING NUMBER:	SCALE:	SHEET:	REVISION:
STUDENT SERVICE ISLAND	NTS	4 OF 14	REV C

STEP 2:

- a. WITH HELP FROM ANOTHER PERSON, POSITION RIGHT APRON ASSEMBLY UP TO RIGHT SIDE OF CABINET SO IT IS CENTERED CORRECTLY AND FLUSH WITH TOP OF BASE CABINETS.
- b. PLACE L-BRACKETS IN CORRECT POSITION ON APRON ASSEMBLY AND SIDE OF CABINET (SHOULD BE FLUSH WITH TOP EDGE OF FRONT AND BACK APRONS).
- c. MARK ON SIDE OF CABINETS WHERE L-BRACKET NEEDS TO BE ATTACHED.
- d. SET APRON ASSEMBLY AND L-BRACKETS DOWN.
- e. REPEAT FOR LEFT SIDE.

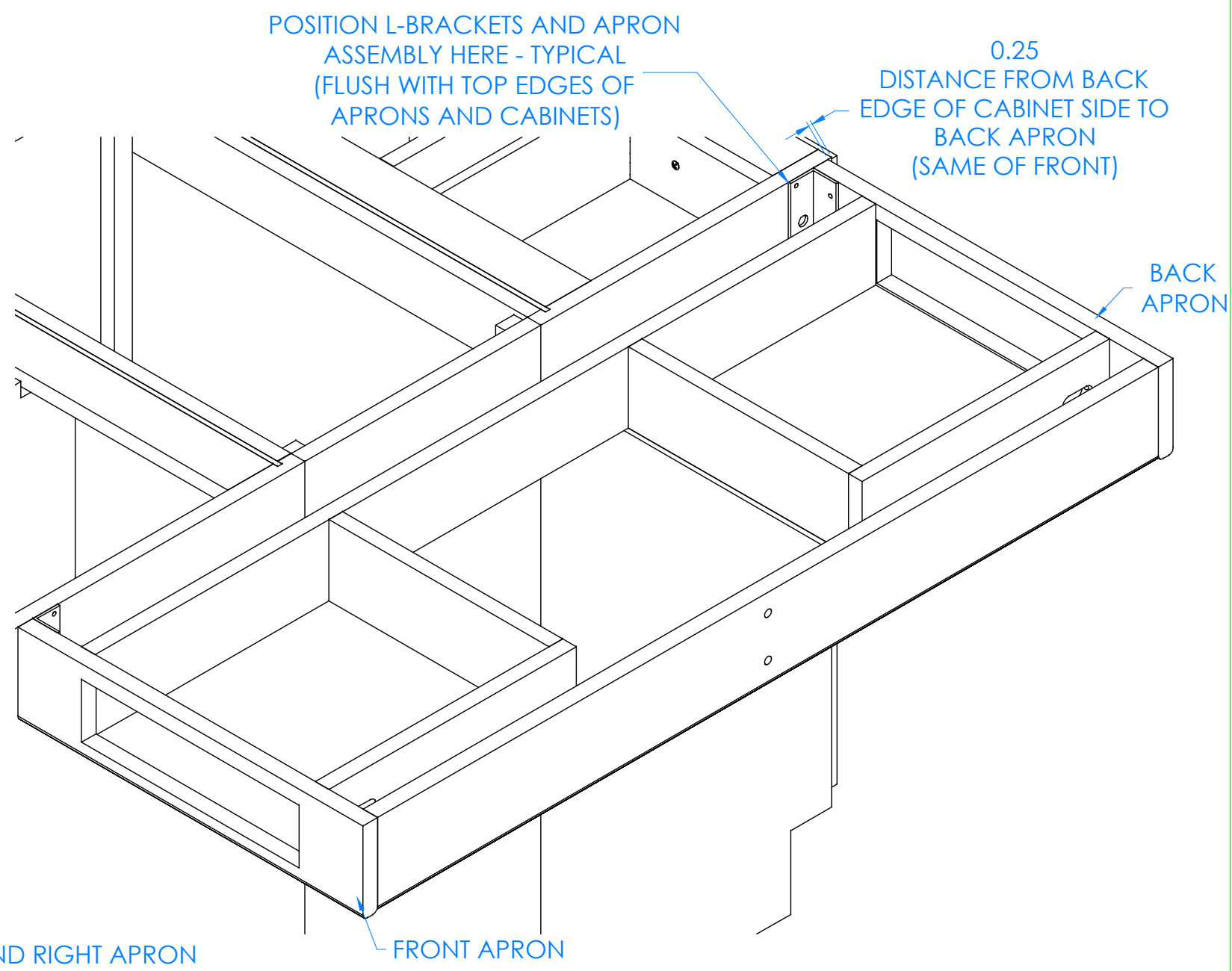
HARDWARE REQUIRED FOR STEP		
QTY	DESCRIPTION	PART NUMBER
2	APRON ASSEMBLY	N/A
4	L BRACKET	100355



RIGHT APRON ASSEMBLY

RIGHT SIDE

CLOSE UP OF RIGHT SIDE AND RIGHT APRON ASSEMBLY SHOWN



FRONT APRON

NOTE:

1.

REV.	DESCRIPTION	DATE	NAME	ECN NO.
C	UPDATED SILICONE PROCEDURE	8/24/23	RJM	-
A	CREATED DRAWING	10/31/16	EMR	-

REVISION LEVEL

ALL DIMENSIONS ARE IN INCHES UNLESS NOTED OTHERWISE DECIMALS: .X = ± .030 .XX = ± .020 .XXX = ± .010 ANGLES: = ± 1° CABINET SQUARENESS = ± .0625	DWN BY: EMR APR BY: APR BY:	DATE DWN: 10/31/16 DATE APR: DATE APR:
---	-----------------------------------	--

CONFIDENTIAL: ALL DESIGN RIGHTS RESERVED. THE INFORMATION, DATA, DESIGN, AND DRAWINGS EMBODIED IN THIS DOCUMENT AND ALL REPRODUCTIONS THEREOF ARE THE EXCLUSIVE PROPERTY OF DIVERSIFIED WOODCRAFTS, INC.

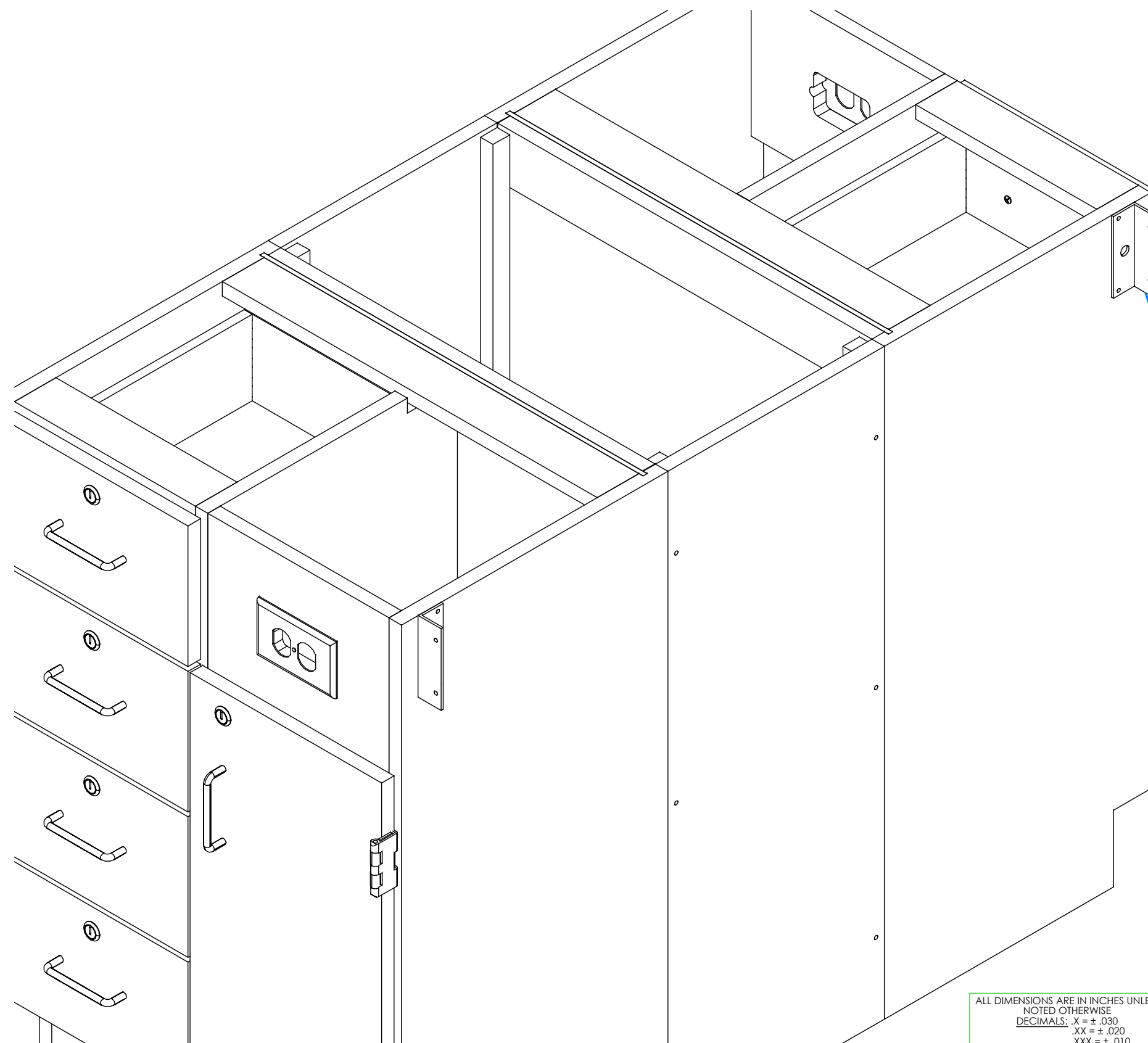
THESE DOCUMENTS ARE SUPPLIED WITH THE UNDERSTANDING THAT THEY WILL NOT BE DISCLOSED TO THIRD PARTIES WITHOUT WRITTEN CONSENT OF DIVERSIFIED WOODCRAFTS, INC. ANY REPRODUCTION IN PART OR WHOLE WITHOUT WRITTEN CONSENT IS SUBJECT TO LEGAL ACTION.



300 South Krueger Street
Suring, WI 54174
diversifiedwoodcrafts.com

TITLE: STUDENT SERVICE ISLAND-DOUBLE ASSEMBLY INSTRUCTIONS

DRAWING NUMBER:	SCALE:	SHEET:	REVISION:
STUDENT SERVICE ISLAND	NTS	5 OF 14	REV C



HARDWARE REQUIRED FOR STEP

QTY	DESCRIPTION	PART NUMBER
4	L BRACKET	100355
8	SCREWS - L BRACKET	100649

STEP 3:

- a. ATTACH L-BRACKETS TO RIGHT SIDE OF CABINET USING PROVIDED HARDWARE LISTED ABOVE.
- b. REPEAT ON LEFT SIDE.

L-BRACKET - TYPICAL

NOTE:

1.

CLOSE UP OF RIGHT SIDE SHOWN

REV.	DESCRIPTION	DATE	NAME	ECN NO.
C	UPDATED SILICONE PROCEDURE	8/24/23	RJM	-
A	CREATED DRAWING	10/31/16	EMR	-

REVISION LEVEL

ALL DIMENSIONS ARE IN INCHES UNLESS NOTED OTHERWISE DECIMALS: .X = ± .030 .XX = ± .020 .XXX = ± .010 ANGLES: = ± 1° CABINET SQUARENESS = ± .0625	DWN BY: EMR APR BY: APR BY:	DATE DWN: 10/31/16 DATE APR: DATE APR:
---	-----------------------------------	--

CONFIDENTIAL:
ALL DESIGN RIGHTS RESERVED
THE INFORMATION, DATA, DESIGN, AND DRAWINGS EMBODIED IN THIS DOCUMENT AND ALL REPRODUCTIONS THEREOF ARE THE EXCLUSIVE PROPERTY OF DIVERSIFIED WOODCRAFTS, INC.

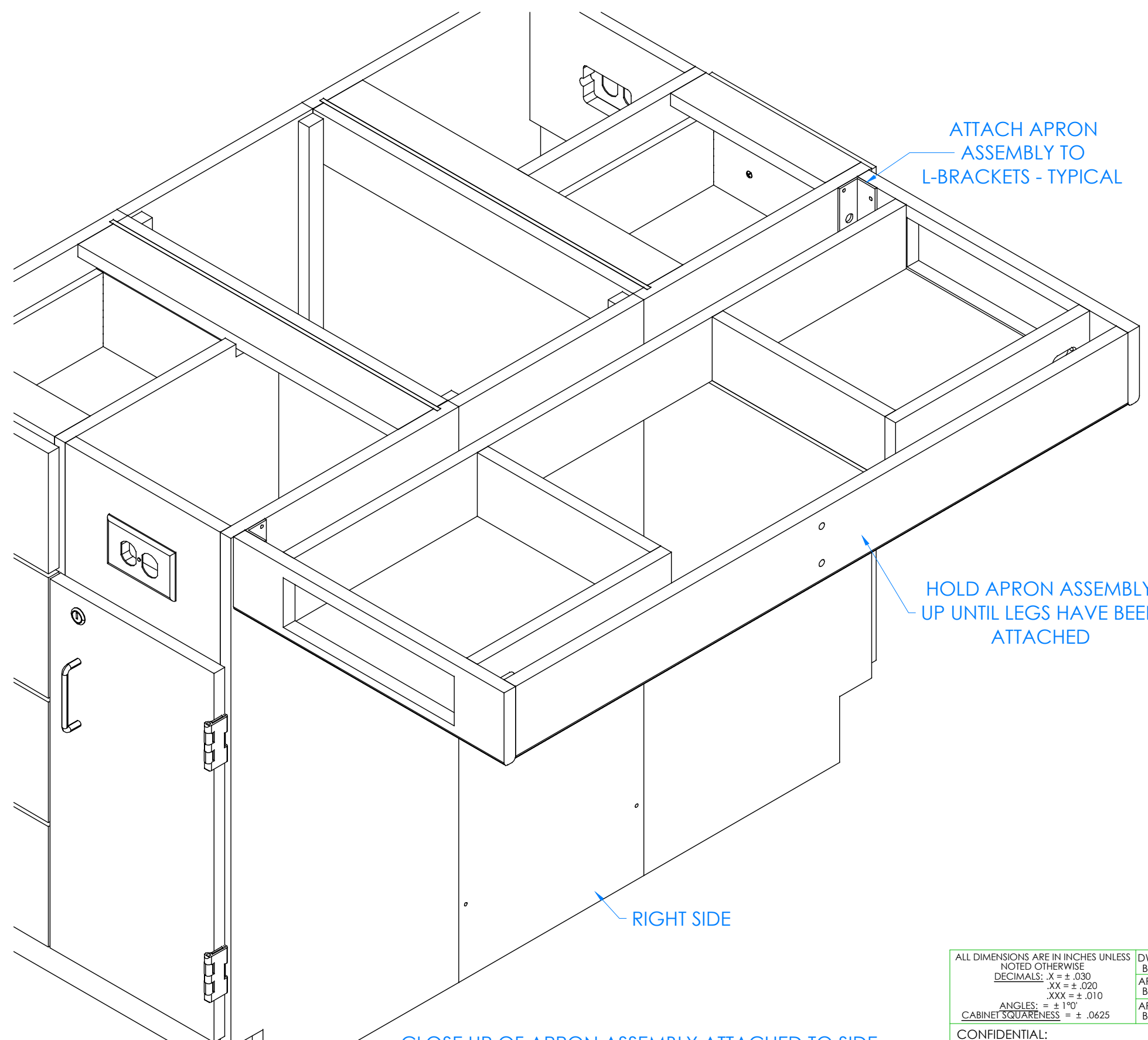
THESE DOCUMENTS ARE SUPPLIED WITH THE UNDERSTANDING THAT THEY WILL NOT BE DISCLOSED TO THIRD PARTIES WITHOUT WRITTEN CONSENT OF DIVERSIFIED WOODCRAFTS, INC. ANY REPRODUCTION IN PART OR WHOLE WITHOUT WRITTEN CONSENT IS SUBJECT TO LEGAL ACTION.



300 South Krueger Street
Suring, WI 54174
diversifiedwoodcrafts.com

TITLE:
STUDENT SERVICE ISLAND-DOUBLE ASSEMBLY INSTRUCTIONS

DRAWING NUMBER: STUDENT SERVICE ISLAND	SCALE: NTS	SHEET: 6 OF 14	REVISION: REV C
--	---------------	-------------------	--------------------



HARDWARE REQUIRED FOR STEP

QTY	DESCRIPTION	PART NUMBER
2	APRON ASSEMBLY	N/A
8	SCREWS - L BRACKET	100649

STEP 4:

- a. WITH HELP FROM ANOTHER PERSON, PLACE APRON ASSEMBLY UP TO SIDE AND ATTACH TO L-BRACKETS USING PROVIDED HARDWARE LISTED ABOVE.
- b. SUPPORT THIS ASSEMBLY UNTIL LEGS HAVE BEEN ATTACHED, IT IS NOT STRONG ENOUGH TO WITHSTAND WEIGHT UNTIL LEGS AND TOP ARE ATTACHED.
- c. REPEAT ON LEFT SIDE.

NOTE:

1.

CLOSE UP OF APRON ASSEMBLY ATTACHED TO SIDE OF CABINET SHOWN

REV.	DESCRIPTION	DATE	NAME	ECN NO.
C	UPDATED SILICONE PROCEDURE	8/24/23	RJM	-
A	CREATED DRAWING	10/31/16	EMR	-

REVISION LEVEL

ALL DIMENSIONS ARE IN INCHES UNLESS NOTED OTHERWISE DECIMALS: .X = ± .030 .XX = ± .020 .XXX = ± .010 ANGLES: = ± 1° CABINET SQUARENESS = ± .0625	DWN BY: EMR APR BY: APR BY:	DATE DWN: 10/31/16 DATE APR: DATE APR:
---	-----------------------------------	--

CONFIDENTIAL:
ALL DESIGN RIGHTS RESERVED.
THE INFORMATION, DATA, DESIGN, AND DRAWINGS EMBODIED IN THIS DOCUMENT AND ALL REPRODUCTIONS THEREOF ARE THE EXCLUSIVE PROPERTY OF DIVERSIFIED WOODCRAFTS, INC.

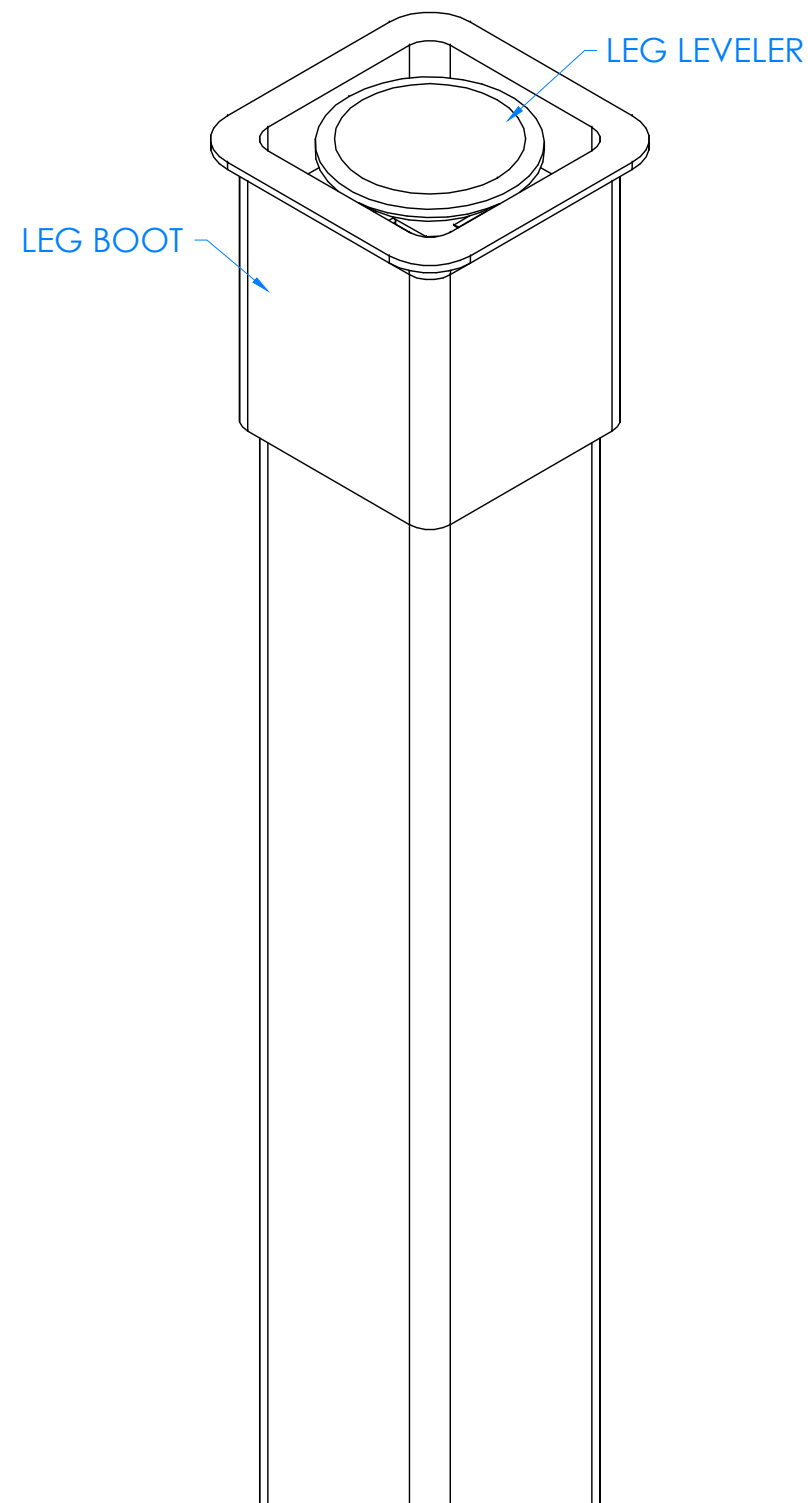
THESE DOCUMENTS ARE SUPPLIED WITH THE UNDERSTANDING THAT THEY WILL NOT BE DISCLOSED TO THIRD PARTIES WITHOUT WRITTEN CONSENT OF DIVERSIFIED WOODCRAFTS, INC. ANY REPRODUCTION IN PART OR WHOLE WITHOUT WRITTEN CONSENT IS SUBJECT TO LEGAL ACTION.



300 South Krueger Street
Suring, WI 54174
diversifiedwoodcrafts.com

TITLE:
STUDENT SERVICE ISLAND-DOUBLE ASSEMBLY INSTRUCTIONS

DRAWING NUMBER: STUDENT SERVICE ISLAND	SCALE: NTS	SHEET: 7 OF 14	REVISION: REV C
--	---------------	-------------------	--------------------



HARDWARE REQUIRED FOR STEP

QTY	DESCRIPTION	PART NUMBER
2	LEGS	500101
2	LEG LEVELER	100079
2	LEG BOOT	100076

STEP 5:

- a. SLIDE LEG BOOT ONTO LEG WITH FLARED END TOWARDS BOTTOM OF LEGS.
- b. SCREW LEG LEVELER INTO T-NUT ON BOTTOM OF LEGS.

CLOSE UP OF LEG LEVELER AND LEG BOOT ASSEMBLY

NOTE:

1.

ALL DIMENSIONS ARE IN INCHES UNLESS NOTED OTHERWISE DECIMALS: .X = ± .030 .XX = ± .020 .XXX = ± .010 ANGLES: = ± 1° CABINET SQUARENESS = ± .0625	DWN BY:	EMR	DATE DWN:	10/31/16
	APR BY:		DATE APR:	
	APR BY:		DATE APR:	
	APR BY:		DATE APR:	



300 South Krueger Street
Suring, WI 54174
diversifiedwoodcrafts.com

CONFIDENTIAL:
 ALL DESIGN RIGHTS RESERVED.
 THE INFORMATION, DATA, DESIGN, AND DRAWINGS EMBODIED IN THIS DOCUMENT AND ALL REPRODUCTIONS THEREOF ARE THE EXCLUSIVE PROPERTY OF DIVERSIFIED WOODCRAFTS, INC.

THESE DOCUMENTS ARE SUPPLIED WITH THE UNDERSTANDING THAT THEY WILL NOT BE DISCLOSED TO THIRD PARTIES WITHOUT WRITTEN CONSENT OF DIVERSIFIED WOODCRAFTS, INC. ANY REPRODUCTION IN PART OR WHOLE WITHOUT WRITTEN CONSENT IS SUBJECT TO LEGAL ACTION.

TITLE: STUDENT SERVICE ISLAND-DOUBLE ASSEMBLY INSTRUCTIONS			
DRAWING NUMBER: STUDENT SERVICE ISLAND	SCALE: NTS	SHEET: 8 OF 14	REVISION: REV C

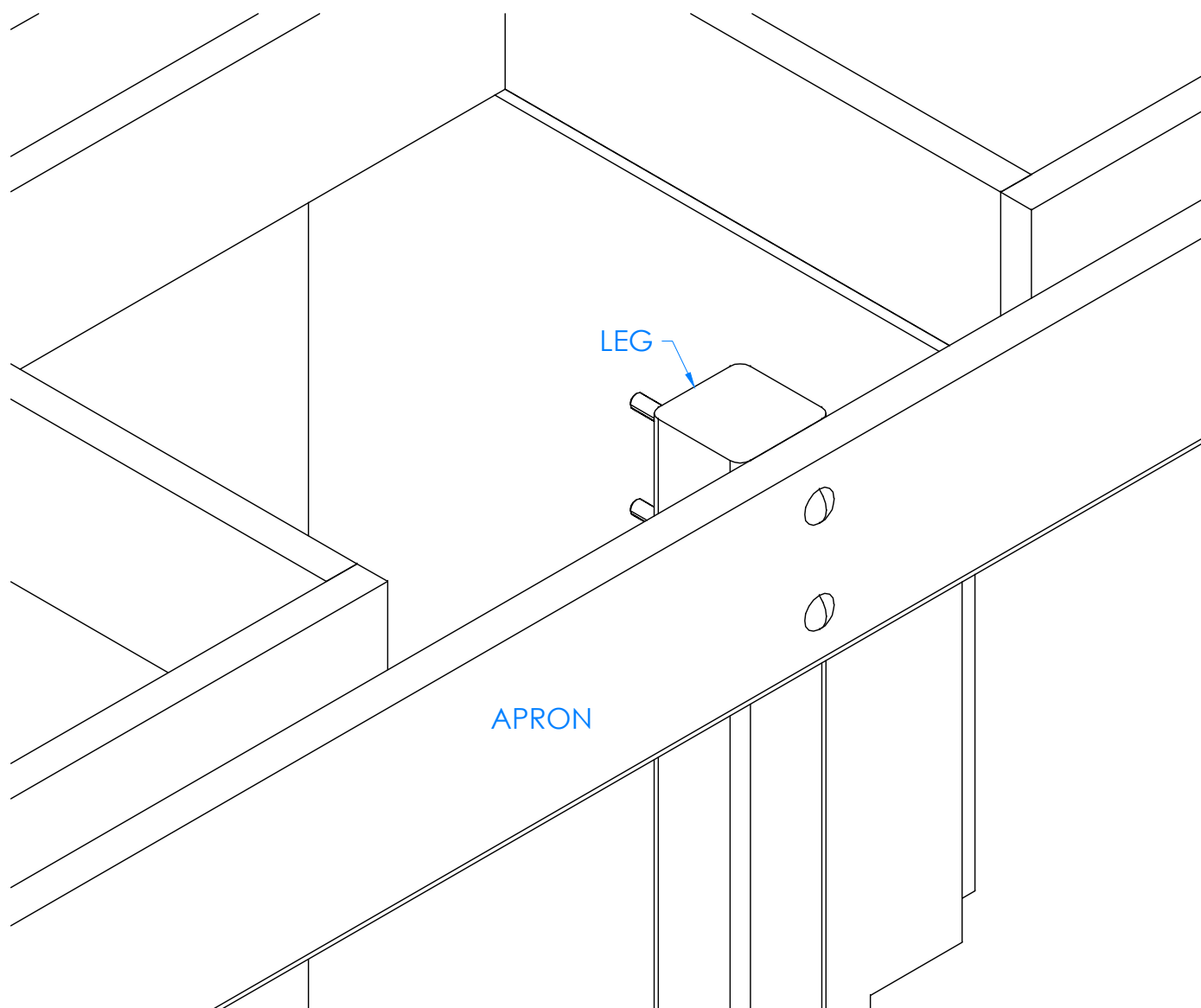
REV.	DESCRIPTION	DATE	NAME	ECN NO.
C	UPDATED SILICONE PROCEDURE	8/24/23	RJM	-
A	CREATED DRAWING	10/31/16	EMR	-
REVISION LEVEL				

STEP 6:

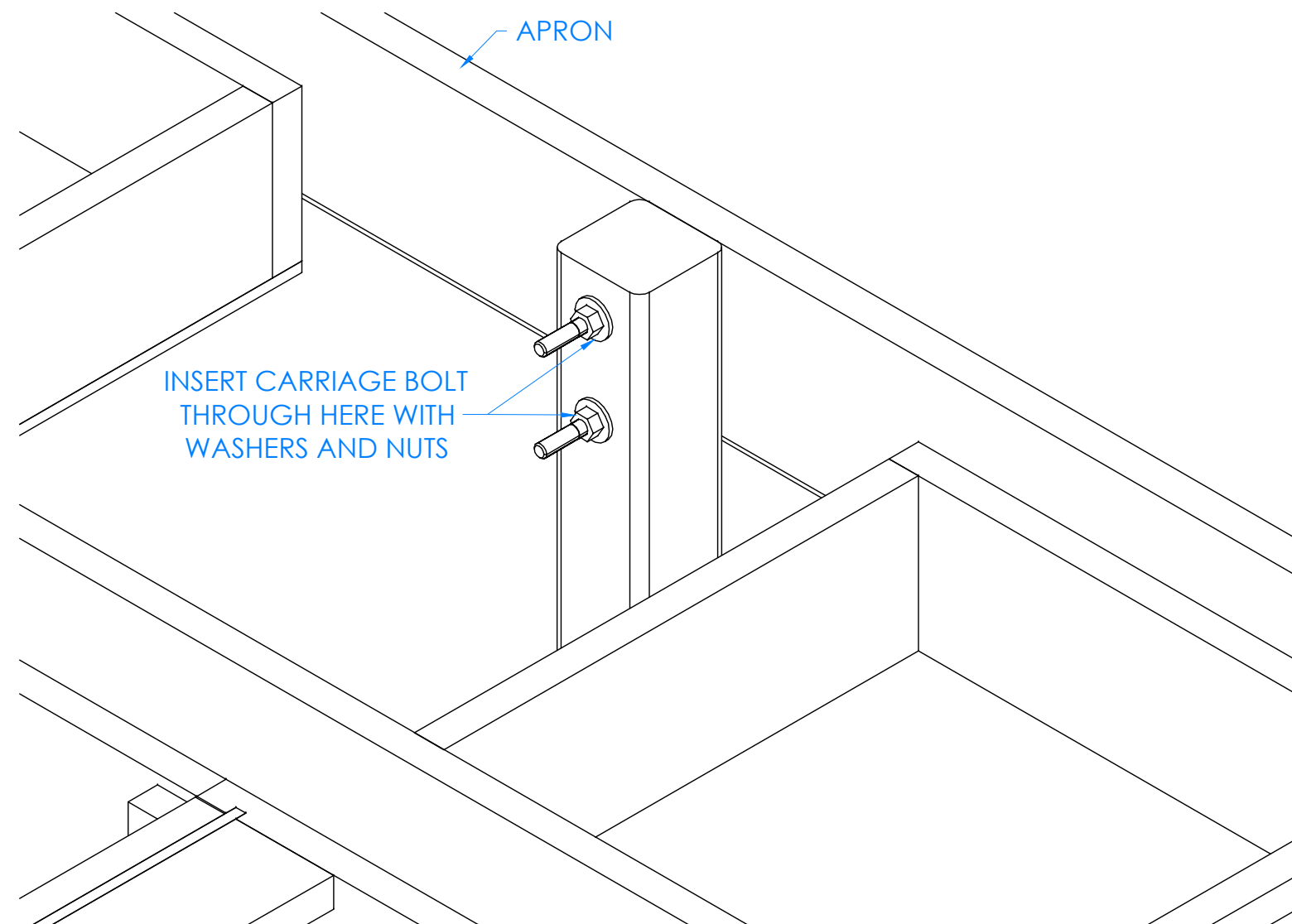
- a. LINE UP HOLES ON APRON WITH HOLES ON LEG AND INSERT CARRIAGE BOLTS, WASHERS, AND HEX NUTS.
- b. TIGHTEN NUTS USING A 1/2" WRENCH OR 1/2" SOCKET AND TORQUE WRENCH, TO A MINIMUM OF 12FT LBS BUT NOT TO EXCEED 17FT LBS.
- c. LEG SHOULD BE PERPENDICULAR TO THE APRON.
- d. REPEAT FOR OTHER LEG.
- e. DO NOT APPLY PRESSURE TO THE APRON ASSEMBLIES AT THIS TIME.
- f. THEY ARE NOT STRONG ENOUGH TO WITHSTAND WEIGHT UNTIL TOP IS ATTACHED.

HARDWARE REQUIRED FOR STEP

QTY	DESCRIPTION	PART NUMBER
2	LEGS	500101
4	CARRIAGE BOLT	227159
4	HEX NUT	100044
4	WASHER	100451



OUTSIDE OF CENTER LEG ASSEMBLY SHOWN



INSIDE OF CENTER LEG ASSEMBLY SHOWN

NOTE:

1.

ALL DIMENSIONS ARE IN INCHES UNLESS NOTED OTHERWISE DECIMALS: .X = ± .030 .XX = ± .020 .XXX = ± .010 ANGLES: = ± 1° CABINET SQUARENESS = ± .0625	DWN BY:	EMR	DATE DWN:	10/31/16
	APR BY:		DATE APR:	
	BY:		DATE APR:	
	APR BY:		DATE APR:	



300 South Krueger Street
Suring, WI 54174
diversifiedwoodcrafts.com

CONFIDENTIAL:
ALL DESIGN RIGHTS RESERVED
THE INFORMATION, DATA, DESIGN, AND DRAWINGS EMBODIED IN THIS DOCUMENT AND ALL REPRODUCTIONS THEREOF ARE THE EXCLUSIVE PROPERTY OF DIVERSIFIED WOODCRAFTS, INC.

TITLE:
STUDENT SERVICE ISLAND-DOUBLE
ASSEMBLY INSTRUCTIONS

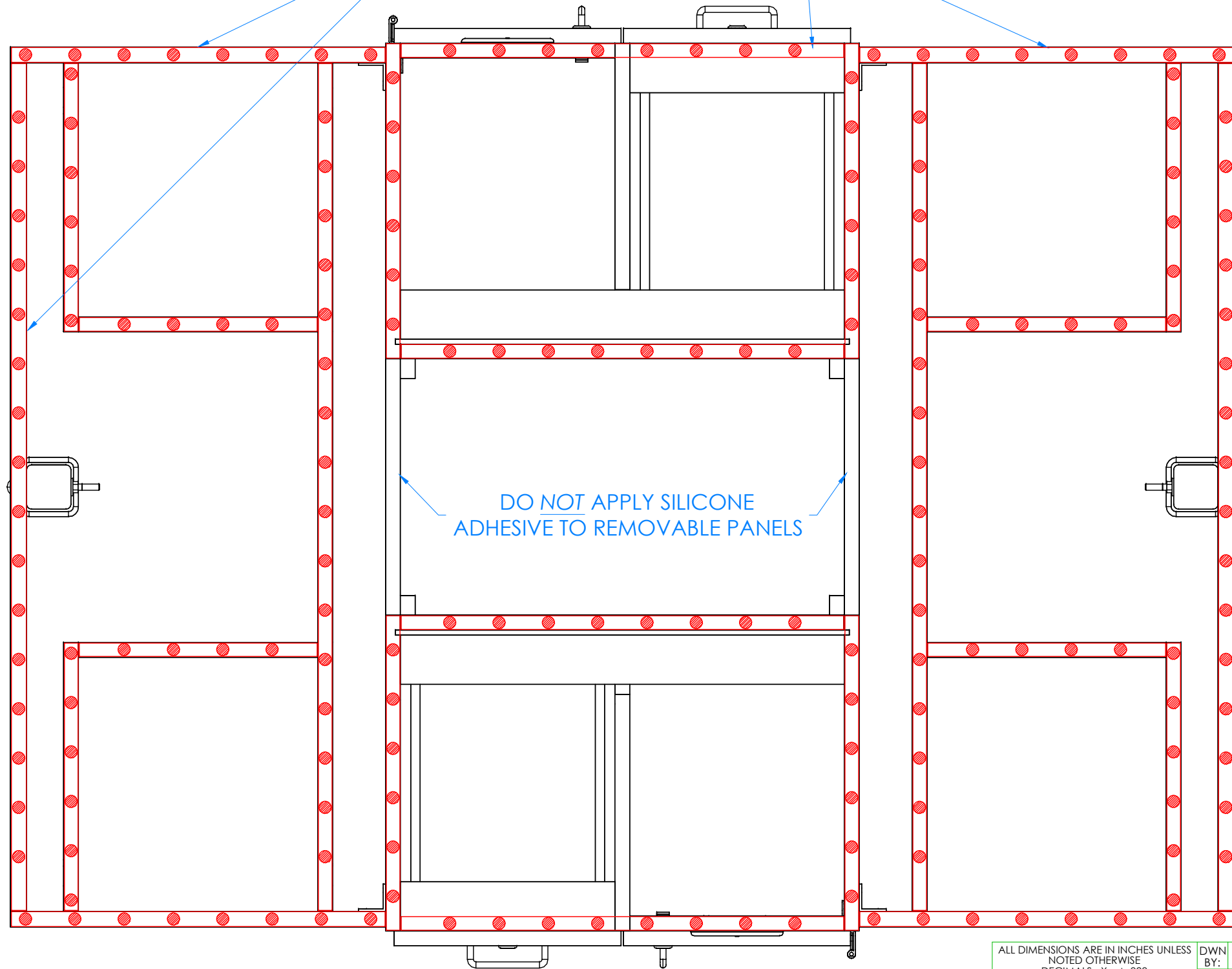
THESE DOCUMENTS ARE SUPPLIED WITH THE UNDERSTANDING THAT THEY WILL NOT BE DISCLOSED TO THIRD PARTIES WITHOUT WRITTEN CONSENT OF DIVERSIFIED WOODCRAFTS, INC. ANY REPRODUCTION IN PART OR WHOLE WITHOUT WRITTEN CONSENT IS SUBJECT TO LEGAL ACTION.

DRAWING NUMBER:	SCALE:	SHEET:	REVISION:
STUDENT SERVICE ISLAND	NTS	9 OF 14	REV C

REV.	DESCRIPTION	DATE	NAME	ECN NO.
C	UPDATED SILICONE PROCEDURE	8/24/23	RJM	-
A	CREATED DRAWING	10/31/16	EMR	-
REVISION LEVEL				

APPLY SILICONE ADHESIVE TO TOP EDGES OF CABINETS AND APRONS

DO NOT APPLY SILICONE ADHESIVE TO REMOVABLE PANELS



HARDWARE REQUIRED FOR STEP

QTY	DESCRIPTION	PART NUMBER
1	TOP	VARIABLES
1	SILICONE	100711

STEP 7:

- a. ADJUST LEG LEVELERS TO LEVEL LEGS WITH CABINETS.
- b. APPLY SILICONE ADHESIVE TO TOP EDGES OF CABINET AND APRONS.
- c. APPLY SILICONE ADHESIVE IN DOT PATTERN LIKE SHOWN FOR BEST RESULTS.
- d. PLACE TOP ON UNIT WITH PROPER OVERHANG (2" OVERHANG ON SIDES AND 1.25" ON FRONT AND BACK).
- e. CLAMP ON TOP TO APRONS TO REMOVE ANY WARP USING SHIMS AND C-CLAMPS, IF NEEDED, WHEN ALIGNING THE TOP (DO THIS BEFORE ADHESIVE ON EDGES SETS UP).
- f. LET CURE FOR 6-12 HOURS.
- g. DO NOT APPLY SILICONE ADHESIVE TO REMOVABLE PANELS.

NOTE:

1.

TOP VIEW OF TABLE SHOWN

ALL DIMENSIONS ARE IN INCHES UNLESS NOTED OTHERWISE	DWN BY: EMR	DATE DWN: 10/31/16
DECIMALS: .X = ± .030	APR BY:	DATE APR:
.XX = ± .020	APR BY:	DATE APR:
.XXX = ± .010	APR BY:	DATE APR:
ANGLES: = ± 1°		
CABINET SQUARENESS = ± .0625		

CONFIDENTIAL:
ALL DESIGN RIGHTS RESERVED.
THE INFORMATION, DATA, DESIGN, AND DRAWINGS EMBODIED IN THIS DOCUMENT AND ALL REPRODUCTIONS THEREOF ARE THE EXCLUSIVE PROPERTY OF DIVERSIFIED WOODCRAFTS, INC.

THESE DOCUMENTS ARE SUPPLIED WITH THE UNDERSTANDING THAT THEY WILL NOT BE DISCLOSED TO THIRD PARTIES WITHOUT WRITTEN CONSENT OF DIVERSIFIED WOODCRAFTS, INC. ANY REPRODUCTION IN PART OR WHOLE WITHOUT WRITTEN CONSENT IS SUBJECT TO LEGAL ACTION.



300 South Krueger Street
Suring, WI 54174
diversifiedwoodcrafts.com

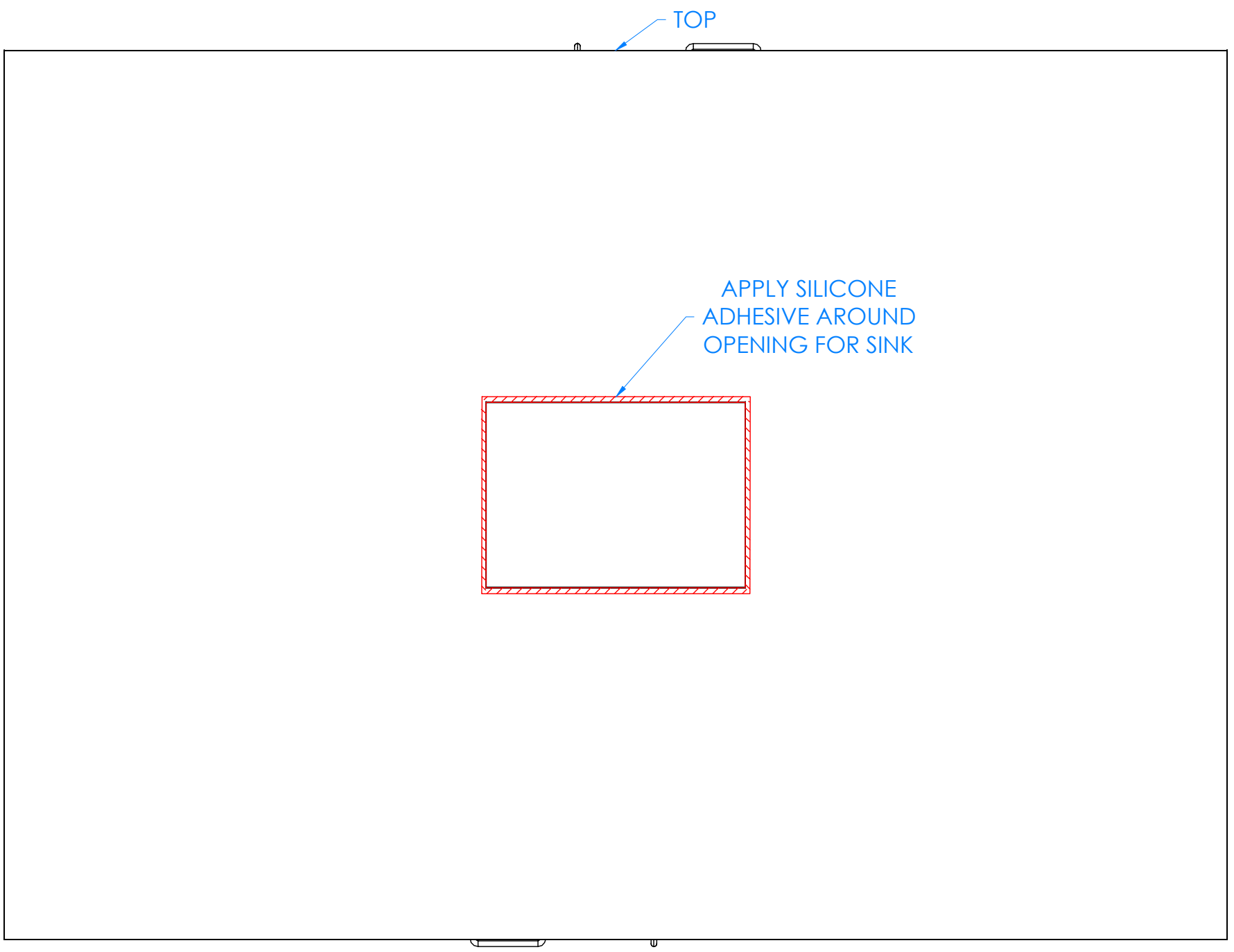
TITLE:
STUDENT SERVICE ISLAND-DOUBLE
ASSEMBLY INSTRUCTIONS

REV.	DESCRIPTION	DATE	NAME	ECN NO.
C	UPDATED SILICONE PROCEDURE	8/24/23	RJM	-
A	CREATED DRAWING	10/31/16	EMR	-

REVISION LEVEL

DRAWING NUMBER:	SCALE:	SHEET:	REVISION:
STUDENT SERVICE ISLAND	NTS	10 OF 14	REV C

HARDWARE REQUIRED FOR STEP		
QTY	DESCRIPTION	PART NUMBER
1	FIXTURE - SINK	100691
1	SILICONE	100711



STEP 8:

- a. IF YOU DON'T HAVE A UNIT WITH A SINK OR FIXTURES, SKIP TO STEP 10.
- b. APPLY SILICONE ADHESIVE TO SINK OPENING ON TOP.
- c. LOWER SINK INTO OPENING.
- d. WIPE OFF ANY EXCESS CAULK AND ALLOW TO SET.
- e. LET CURE FOR 6-12 HOURS.

NOTE:

1.

TOP VIEW OF TABLE SHOWN

REV.	DESCRIPTION	DATE	NAME	ECN NO.
C	UPDATED SILICONE PROCEDURE	8/24/23	RJM	-
A	CREATED DRAWING	10/31/16	EMR	-

REVISION LEVEL

ALL DIMENSIONS ARE IN INCHES UNLESS NOTED OTHERWISE
 DECIMALS: .X = ± .030
 .XX = ± .020
 .XXX = ± .010
 ANGLES: = ± 1°
 CABINET SQUARENESS = ± .0625

DWN BY:	EMR	DATE DWN:	10/31/16
APR BY:		DATE APR:	
APR BY:		DATE APR:	

CONFIDENTIAL:
 ALL DESIGN RIGHTS RESERVED.
 THE INFORMATION, DATA, DESIGN, AND DRAWINGS EMBODIED IN THIS DOCUMENT AND ALL REPRODUCTIONS THEREOF ARE THE EXCLUSIVE PROPERTY OF DIVERSIFIED WOODCRAFTS, INC.

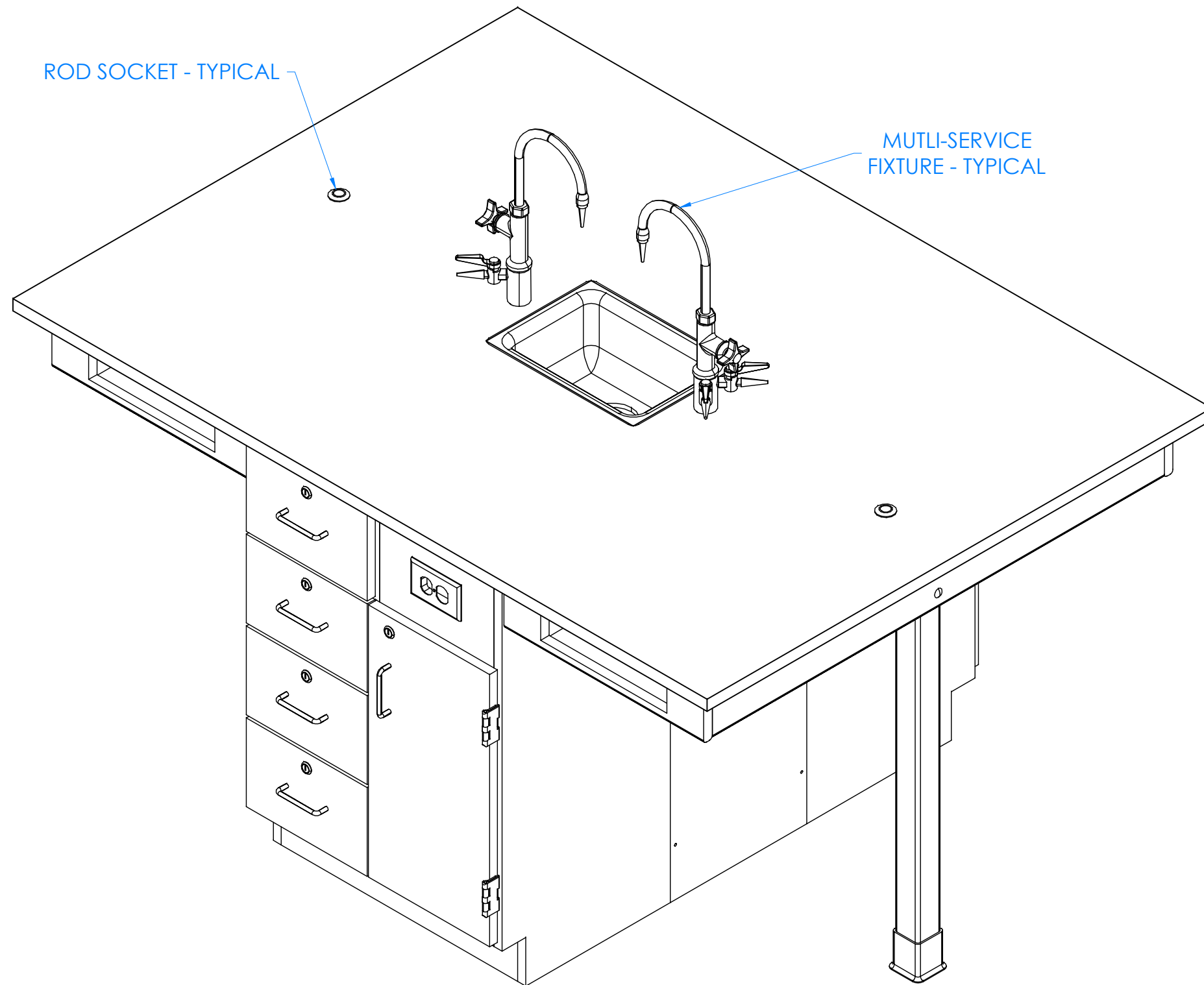
THESE DOCUMENTS ARE SUPPLIED WITH THE UNDERSTANDING THAT THEY WILL NOT BE DISCLOSED TO THIRD PARTIES WITHOUT WRITTEN CONSENT OF DIVERSIFIED WOODCRAFTS, INC. ANY REPRODUCTION IN PART OR WHOLE WITHOUT WRITTEN CONSENT IS SUBJECT TO LEGAL ACTION.



300 South Krueger Street
 Suring, WI 54174
 diversifiedwoodcrafts.com

TITLE:
STUDENT SERVICE ISLAND-DOUBLE ASSEMBLY INSTRUCTIONS

DRAWING NUMBER:	SCALE:	SHEET:	REVISION:
STUDENT SERVICE ISLAND	NTS	11 OF 14	REV C



HARDWARE REQUIRED FOR STEP

QTY	DESCRIPTION	PART NUMBER
2	FIXTURE - FAUCETS	100074-BKR
1	FIXTURE - SINK TRAP	100056
1	FIXTURE - SINK OUTLET/STRAINER	254047
2	ROD SOCKETS	206505

STEP 9:

- a. INSTALL MULTI-SERVICE FIXTURES IN HOLES PROVIDED ON TOP.
- b. INSERT ROD SOCKETS INTO PRE-DRILLED HOLES IN TOP.

NOTE:

- 1. ALL WATER, ELECTRICAL, AND GAS CONNECTIONS SHOULD BE PERFORMED BY A TRAINED PROFESSIONAL PER LOCAL CODE.

REV.	DESCRIPTION	DATE	NAME	ECN NO.
C	UPDATED SILICONE PROCEDURE	8/24/23	RJM	-
A	CREATED DRAWING	10/31/16	EMR	-

REVISION LEVEL

ALL DIMENSIONS ARE IN INCHES UNLESS NOTED OTHERWISE	DWN BY:	EMR	DATE DWN:	10/31/16
DECIMALS: .X = ± .030 .XX = ± .020 .XXX = ± .010	APR BY:		DATE APR:	
ANGLES: = ± 1°	APR BY:		DATE APR:	
CABINET SQUARENESS = ± .0625				

CONFIDENTIAL:
ALL DESIGN RIGHTS RESERVED.
THE INFORMATION, DATA, DESIGN, AND DRAWINGS EMBODIED IN THIS DOCUMENT AND ALL REPRODUCTIONS THEREOF ARE THE EXCLUSIVE PROPERTY OF DIVERSIFIED WOODCRAFTS, INC.

THESE DOCUMENTS ARE SUPPLIED WITH THE UNDERSTANDING THAT THEY WILL NOT BE DISCLOSED TO THIRD PARTIES WITHOUT WRITTEN CONSENT OF DIVERSIFIED WOODCRAFTS, INC. ANY REPRODUCTION IN PART OR WHOLE WITHOUT WRITTEN CONSENT IS SUBJECT TO LEGAL ACTION.



300 South Krueger Street
Suring, WI 54174
diversifiedwoodcrafts.com

TITLE:
STUDENT SERVICE ISLAND-DOUBLE ASSEMBLY INSTRUCTIONS

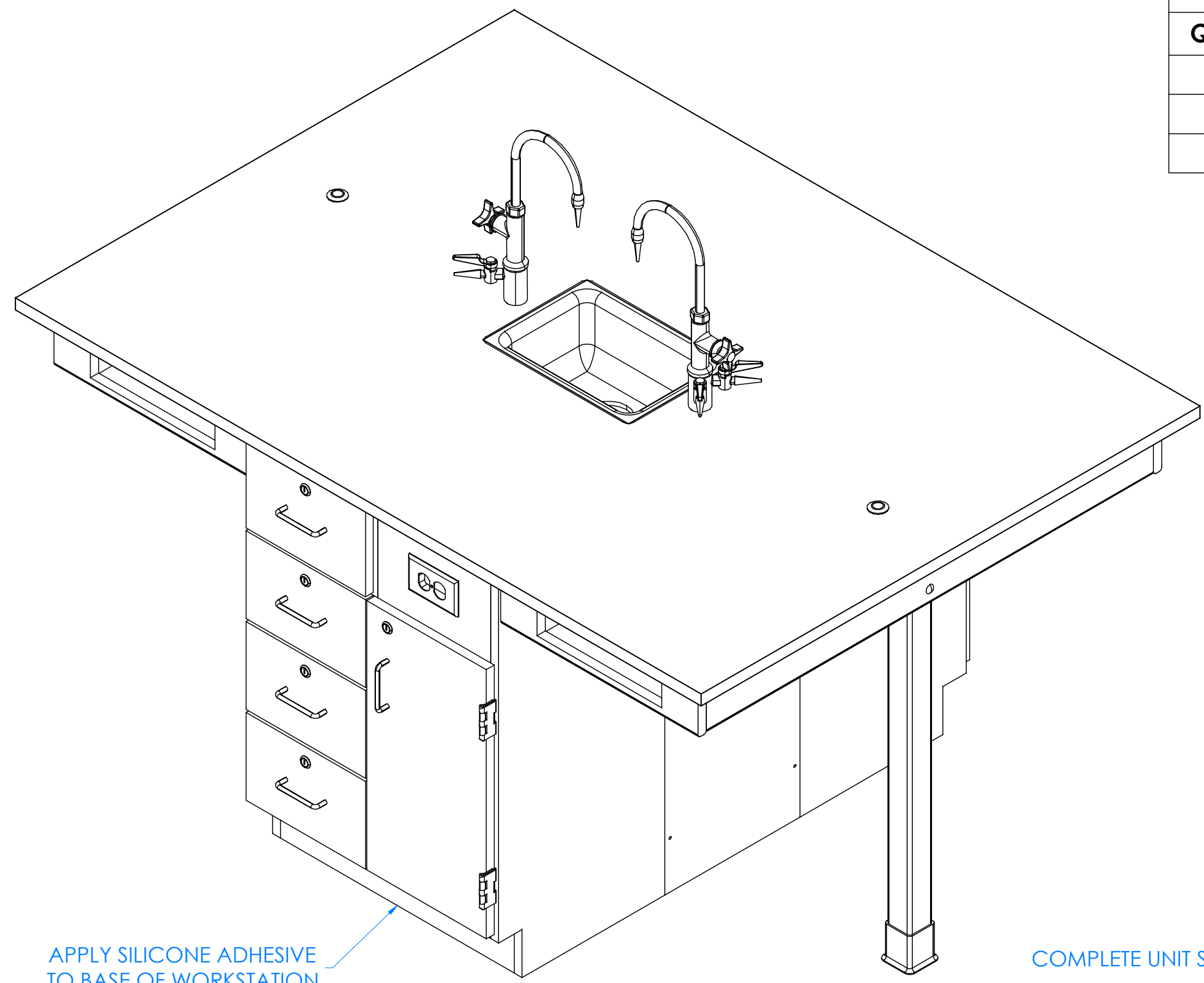
DRAWING NUMBER:	SCALE:	SHEET:	REVISION:
STUDENT SERVICE ISLAND	NTS	12 OF 14	REV C

HARDWARE REQUIRED FOR STEP

QTY	DESCRIPTION	PART NUMBER
11	RUBBER BASE MOLDING	100283
4	STAINLESS STEEL CORNERS	100057
16	SCREWS - BASE	100064

STEP 10:

- a. ATTACH RUBBER MOLDING TO BASE OF CABINET USING CONTACT CEMENT.
- b. SCREW STAINLESS STEEL CORNER BRACKETS ON EACH CORNER OVER BASE MOLDING USING HARDWARE LISTED ABOVE.



APPLY SILICONE ADHESIVE TO BASE OF WORKSTATION

COMPLETE UNIT SHOWN

NOTE:

1.

ALL DIMENSIONS ARE IN INCHES UNLESS NOTED OTHERWISE DECIMALS: .X = ± .030 .XX = ± .020 .XXX = ± .010 ANGLES: = ± 1° CABINET SQUARENESS = ± .0625	DWN BY: EMR APR BY: APR BY:	DATE DWN: 10/31/16 DATE APR: DATE APR:
---	-----------------------------------	--



300 South Krueger Street
Suring, WI 54174
diversifiedwoodcrafts.com

CONFIDENTIAL:
ALL DESIGN RIGHTS RESERVED.
THE INFORMATION, DATA, DESIGN, AND DRAWINGS EMBODIED IN THIS DOCUMENT AND ALL REPRODUCTIONS THEREOF ARE THE EXCLUSIVE PROPERTY OF DIVERSIFIED WOODCRAFTS, INC.

TITLE:
STUDENT SERVICE ISLAND-DOUBLE ASSEMBLY INSTRUCTIONS

REV.	DESCRIPTION	DATE	NAME	ECN NO.
C	UPDATED SILICONE PROCEDURE	8/24/23	RJM	-
A	CREATED DRAWING	10/31/16	EMR	-

REVISION LEVEL

THESE DOCUMENTS ARE SUPPLIED WITH THE UNDERSTANDING THAT THEY WILL NOT BE DISCLOSED TO THIRD PARTIES WITHOUT WRITTEN CONSENT OF DIVERSIFIED WOODCRAFTS, INC. ANY REPRODUCTION IN PART OR WHOLE WITHOUT WRITTEN CONSENT IS SUBJECT TO LEGAL ACTION.

DRAWING NUMBER: STUDENT SERVICE ISLAND	SCALE: NTS	SHEET: 13 OF 14	REVISION: REV C
--	---------------	--------------------	--------------------

TROUBLESHOOTING YOUR GFCI ELECTRICAL RECEPTACLE:

PLEASE NOTE: THROUGHOUT ANY OF THE FOLLOWING STEPS (PROCEDURES); IF YOU ARE NOT SURE YOU CAN DO THIS JOB SAFELY, AND COMPETENTLY, REFER THIS WORK TO QUALIFIED PROFESSIONAL!

If your unit comes equipped with a GFCI (Ground Fault Circuit Interrupter) electrical receptacle, and there is no power in the receptacle please consider/check the following:

- The extension cord (if being used) is working properly.
- The breaker hasn't been tripped, or turned off.

This type of GFCI has two testing-related buttons on it. One button is appropriately labeled "TEST", and the other button is labeled "RESET". To test the GFCI receptacle follow these steps:

- Plug in an appliance (lamp or night light) into the outlet. The light should now be on. Then press the "TEST" button on the GFCI. The GFCI "RESET" button should pop out, and the light should go out.
- If the "RESET" button pops out, but the light doesn't go out, the GFCI has been improperly wired. In this case please contact a certified professional. There may also be a problem with other wiring in the same circuit.
- If the "RESET" button doesn't pop out, the GFCI is defective, or malfunctioned, and should be replaced.
- If the GFCI is functioning properly, and the lamp goes out, press the "RESET" button to restore power to the outlet.

Conversely, if you have a GFI that has tripped (which is common) and it will not reset, you may have a wiring short in the circuit, a defective appliance on the circuit, or the GFI itself has become defective. To test a tripping GFCI follow these steps:

- Remove every appliance connected to the GFCI's circuit and reset it. If it doesn't reset there may either be a wiring fault behind a socket outlet, or your GFCI itself has become faulty.
- Make sure whatever you are plugging into to the GFCI is dry and not damaged.
- Only plug in one item at a time. If you are plugging in a defective item it will cause the GFCI to trip, and that item therefore should be replaced.

If you are still having difficulty the easiest way to troubleshoot a GFI is to obtain a GFI tester, which is available at most hardware stores. It plugs into the GFI outlet, and will supply you with a "snapshot" of your connections, indicating wiring problems and/or the condition of the GFI. Another way to troubleshoot is to simply purchase a new GFI and install it.