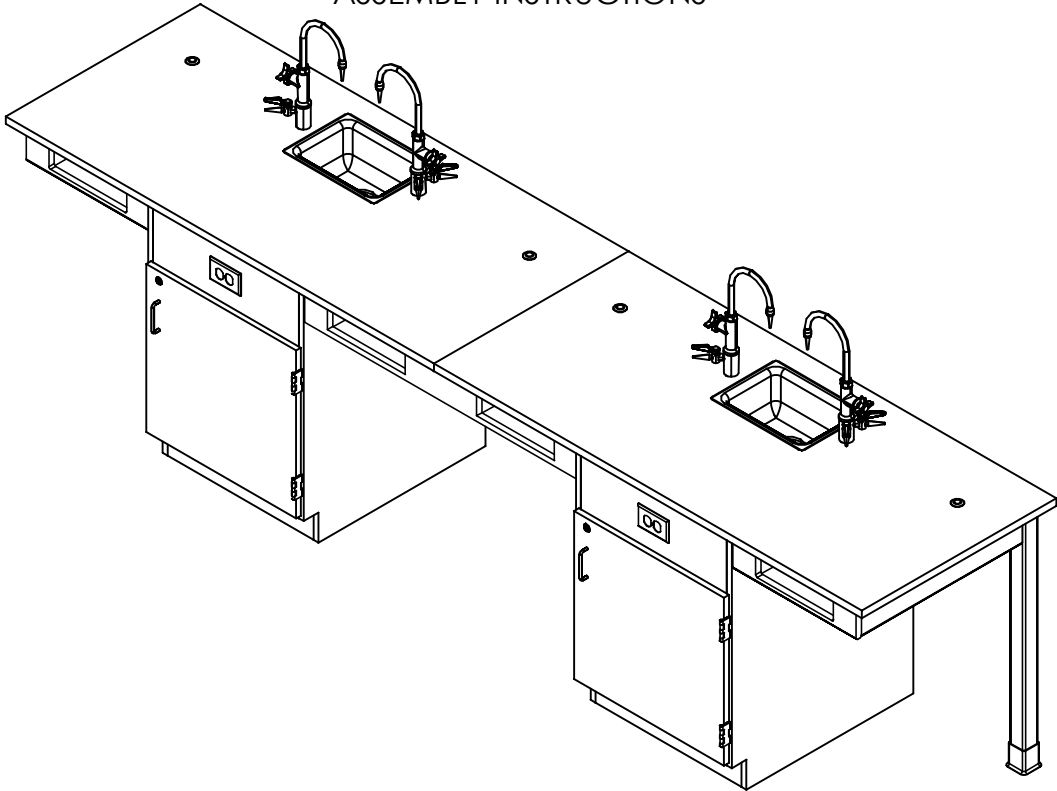


# STUDENT SERVICE ISLAND-SINGLE

C2520K, C2520KF, C2530K , C2530KF, C2540K, C2540KF, C2720K, C2720KF, C2730K, C2730KF, C2740K, & C2740KF SERIES  
ASSEMBLY INSTRUCTIONS



NOTE:

1. MODEL VIEWS MAY NOT REPRESENT EXACT MODEL PURCHASED

A	CREATED DRAWING	10/31/16	EMR	-
REV.	DESCRIPTION	DATE	NAME	ECN NO.
REVISION LEVEL				

ALL DIMENSIONS ARE IN INCHES UNLESS NOTED OTHERWISE DECIMALS: X = ± .000 XX = ± .020 XXX = ± .010 ANGLES: = ± 1° CABINET SQUARENESS: = ± .0625				DWN BY: EMR	DATE DWN: 10/31/16
CONFIDENTIAL: ALL DESIGN RIGHTS RESERVED THE INFORMATION, DATA, DESIGN, AND DRAWINGS EMBODIED IN THIS DOCUMENT AND ALL REPRODUCTIONS THEREOF ARE THE EXCLUSIVE PROPERTY OF DIVERSIFIED WOODCRAFTS, INC.				APR BY:	DATE APR:
THESE DOCUMENTS ARE SUPPLIED WITH THE UNDERSTANDING THAT THEY WILL NOT BE DISCLOSED TO THIRD PARTIES WITHOUT WRITTEN CONSENT OF DIVERSIFIED WOODCRAFTS, INC. ANY REPRODUCTION IN PART OR WHOLE WITHOUT WRITTEN CONSENT IS SUBJECT TO LEGAL ACTION.				APR BY:	DATE APR:



300 South Krueger Street  
Suring, WI 54174  
diversifiedwoodcrafts.com

TITLE:  
STUDENT SERVICE ISLAND-SINGLE  
ASSEMBLY INSTRUCTIONS

DRAWING NUMBER:  
STUDENT SERVICE ISLAND

SCALE:  
NTS

SHEET:  
1 OF 13

REVISION:  
REV A

## TOOLS REQUIRED

½" WRENCH
½" SOCKET AND TORQUE WRENCH - OPTIONAL
CONTACT CEMENT
SCREW DRIVER
C-CLAMPS
SHIM STOCK (IF NEEDED)

## ASSEMBLY COMPONENTS

ITEMS INCLUDED	PART #	PART DESCRIPTION	QTY
TOP	VARIES	TOP (STYLE VARIES), 1.00 X 30 X 66	VARIES
CABINET	N/A	24"W X 35"H X 28"D	VARIES
APRON ASSEMBLY - EXTERNAL	N/A	APRON ASSEMBLY (FACTORY ASSEMBLED)	2
APRON ASSEMBLY - INTERNAL	N/A	APRON ASSEMBLY (FACTORY ASSEMBLED)	VARIES
SILICONE	100711	SILICONE,SEALANT,CLEAR	1
LEGS	500101	LEG,OAK 2.25X2.25X34.25	2
LEG HARDWARE	520001	LEG HARDWARE KIT, 1 LEG	2
RUBBER BASE MOLDING	100283	RUBBER BASE MOLDING(SOLD BY FOOT)	VARIES
STAINLESS STEEL CORNERS	100057	CORNERS-STAINLESS STEEL,BASE	VARIES
SCREWS - BASE	100064	SCREW,#6X½ PTH SMS SS SCREW	VARIES
ELECTRICAL BOX	100033	ELECTRICAL BOX 3.00X2X2.50 DEEP	VARIES
ELECTRICAL OUTLET	100034	ELEC,OUTLET,GFI,20A 125V,BLK	VARIES
L BRACKET	100355	BRACKET,RAIL 1.25X1.25X4.25	VARIES
SCREWS - L BRACKET	100649	SCREW,#8X¾ PHIL TRUSS HEAD SMS	VARIES
**FIXTURE - FAUCETS**	100074-BKR	FIXTURE,L65-WSA-DIV(MULTI-SERVICE)	VARIES
**FIXTURE - SINK**	100691	SINK,EPOXY L3,BLK	VARIES
**FIXTURE - SINK TRAP**	100056	SINK TRAP,PLATIC ADJUSTABLE	VARIES
**FIXTURE - SINK STOPPER**	100112	SINK STOPPER 1 ½,BLK	VARIES
**FIXTURE - STRAINER**	100055	SINK,OUTLET/STAINER EPOXY,BLK	VARIES
**ROD SOCKETS**	206505	ROD SOCKET ASSY,SOCKET,WASHER,NUT	VARIES

### NOTE:

1. TOPS ARE EITHER PHENOLIC OR EPOXY.
2. \*\*XX\*\* INDICATES ITEMS USED ONLY FOR THE "K" SERIES.

ALL DIMENSIONS ARE IN INCHES UNLESS NOTED OTHERWISE  
 DECIMALS: .X = ± .030  
 .XX = ± .020  
 .XXX = ± .010  
 ANGLES: = ± 1°  
 CABINET SQUARENESS: = ± .0625

DWN BY: EMR DATE DWN: 10/31/16  
 APR BY: DATE APR:  
 APR BY: DATE APR:

CONFIDENTIAL:  
 ALL DESIGN RIGHTS RESERVED  
 THE INFORMATION, DATA, DESIGN, AND DRAWINGS EMBODIED  
 IN THIS DOCUMENT AND ALL REPRODUCTIONS THEREOF ARE  
 THE EXCLUSIVE PROPERTY OF DIVERSIFIED WOODCRAFTS, INC.

THESE DOCUMENTS ARE SUPPLIED WITH THE UNDERSTANDING  
 THAT THEY WILL NOT BE DISCLOSED TO THIRD PARTIES WITHOUT  
 WRITTEN CONSENT OF DIVERSIFIED WOODCRAFTS, INC. ANY  
 REPRODUCTION IN PART OR WHOLE WITHOUT WRITTEN  
 CONSENT IS SUBJECT TO LEGAL ACTION.



300 South Krueger Street  
 Suring, WI 54174  
 diversifiedwoodcrafts.com

TITLE:  
 STUDENT SERVICE ISLAND-SINGLE  
 TOOLS AND ASSEMBLY COMPONENTS

A	CREATED DRAWING	10/31/16	EMR	-
REV.	DESCRIPTION	DATE	NAME	ECN NO.

REVISION LEVEL

DRAWING NUMBER:

STUDENT SERVICE ISLAND

SCALE:

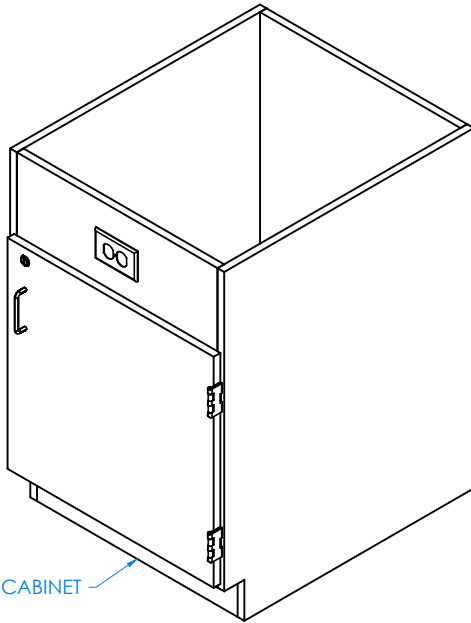
NTS

SHEET:

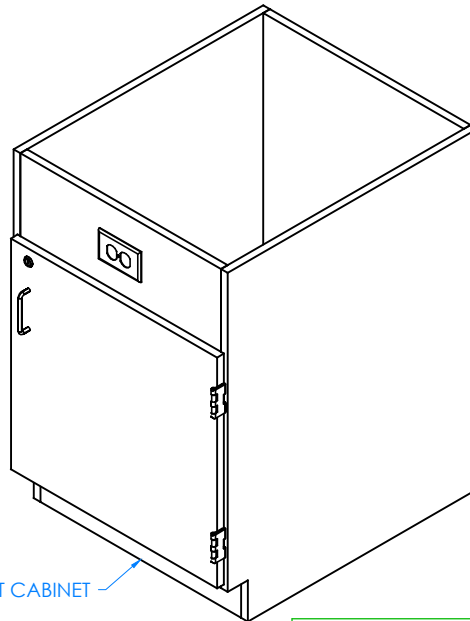
2 OF 13

REVISION:

REV A



LEFT CABINET



RIGHT CABINET

STEP 1:

- PLACE CABINETS IN DESIRED LOCATION.
- IF YOU HAVE "K" SERIES CABINETS, PLACE THEM OVER UTILITY HOOK-UPS.
- LEVEL CABINETS.
- ATTACH TO FLOOR.

**\*\*NOTE\*\***

CABINET MUST BE LEVELED OR DOORS AND DRAWERS MAY NOT OPEN OR CLOSE CORRECTLY

**NOTE:**

1.

ALL DIMENSIONS ARE IN INCHES UNLESS NOTED OTHERWISE	DWN BY:	EMR	DATE DWN:	10/31/16
DECIMALS: X = ± .030	APR BY:		DATE APR:	
XX = ± .020	APR BY:		DATE APR:	
XXX = ± .010	APR BY:		DATE APR:	
ANGLES: = ± 1°	APR BY:		DATE APR:	
CABINET SQUARENESS: = ± .0625	APR BY:		DATE APR:	

CONFIDENTIAL:  
ALL DESIGN RIGHTS RESERVED  
THE INFORMATION, DATA, DESIGN, AND DRAWINGS EMBODIED IN THIS DOCUMENT AND ALL REPRODUCTIONS THEREOF ARE THE EXCLUSIVE PROPERTY OF DIVERSIFIED WOODCRAFTS, INC.

THESE DOCUMENTS ARE SUPPLIED WITH THE UNDERSTANDING THAT THEY WILL NOT BE DISCLOSED TO THIRD PARTIES WITHOUT WRITTEN CONSENT OF DIVERSIFIED WOODCRAFTS, INC. ANY REPRODUCTION IN PART OR WHOLE WITHOUT WRITTEN CONSENT IS SUBJECT TO LEGAL ACTION.



300 South Krueger Street  
Suring, WI 54174  
diversifiedwoodcrafts.com

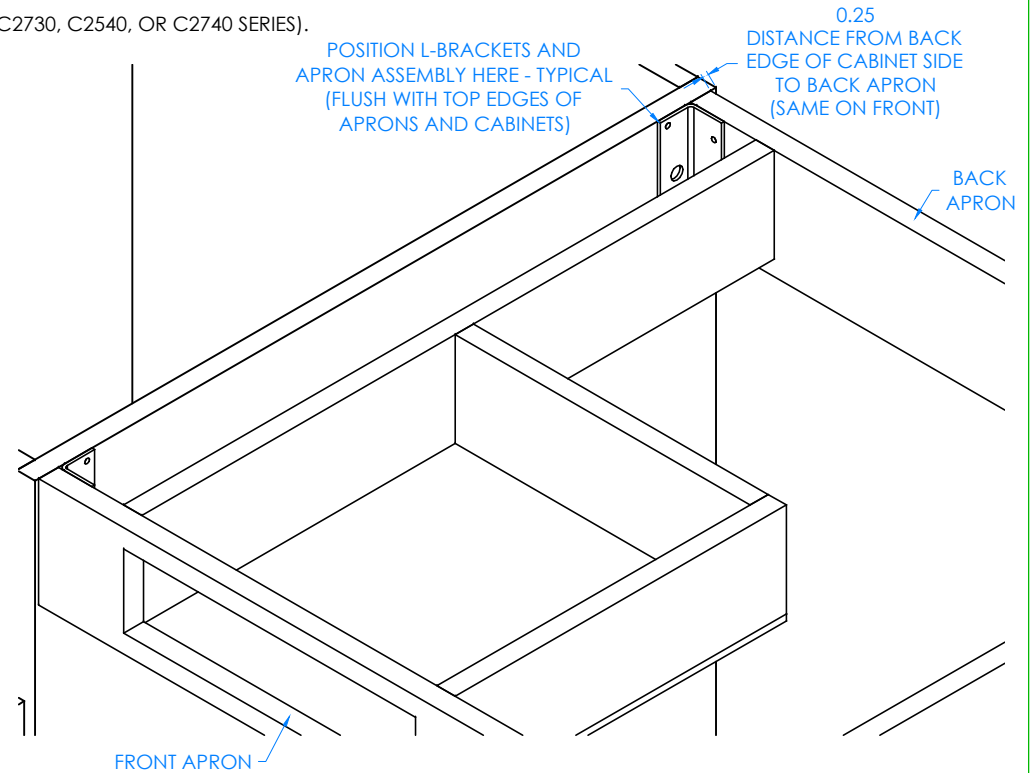
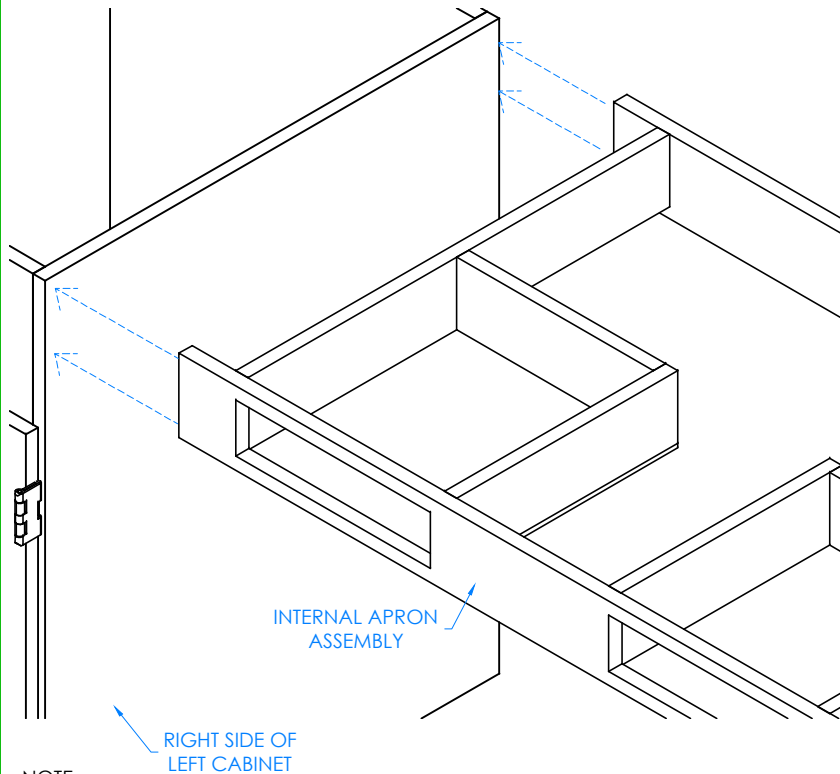
TITLE:  
**STUDENT SERVICE ISLAND-SINGLE  
ASSEMBLY INSTRUCTIONS**

DRAWING NUMBER:	SCALE:	SHEET:	REVISION:
<b>STUDENT SERVICE ISLAND</b>	NTS	3 OF 13	REV A

A	CREATED DRAWING	10/31/16	EMR	-
REV.	DESCRIPTION	DATE	NAME	ECN NO.
REVISION LEVEL				

STEP 2:

- WITH HELP FROM ANOTHER PERSON, POSITION INTERNAL APRON ASSEMBLY UP TO RIGHT SIDE OF LEFT CABINET SO IT IS CENTERED CORRECTLY AND FLUSH WITH TOP OF BASE CABINET.
- PLACE L-BRACKETS IN CORRECT POSITION ON APRON ASSEMBLY AND RIGHT SIDE OF LEFT CABINET (SHOULD BE FLUSH WITH TOP EDGE OF FRONT AND BACK APRONS).
- MARK ON SIDE OF CABINET WHERE L-BRACKET NEEDS TO BE ATTACHED.
- REPEAT ON OTHER SIDE OF INTERNAL APRON ASSEMBLY.
- CONTINUE STEP IF YOU HAVE MULTIPLE INTERNAL APRON ASSEMBLIES (EX. C2530, C2730, C2540, OR C2740 SERIES).



NOTE:

1.

CLOSE UP OF RIGHT SIDE OF LEFT CABINET AND INTERNAL APRON ASSEMBLY SHOWN

REV.	DESCRIPTION	DATE	NAME	ECN NO.
A	CREATED DRAWING	10/31/16	EMR	-
REVISION LEVEL				

ALL DIMENSIONS ARE IN INCHES UNLESS NOTED OTHERWISE	DWN BY:	EMR	DATE DWN:	10/31/16
DECIMALS: X = ± .030	APR BY:		DATE APR:	
XX = ± .020	APR BY:		DATE APR:	
XXX = ± .010	APR BY:		DATE APR:	
ANGLES: = ± 1°	APR BY:		DATE APR:	
CABINET SQUARENESS: = ± .0625	APR BY:		DATE APR:	

CONFIDENTIAL:  
ALL DESIGN RIGHTS RESERVED  
THE INFORMATION, DATA, DESIGN, AND DRAWINGS EMBODIED IN THIS DOCUMENT AND ALL REPRODUCTIONS THEREOF ARE THE EXCLUSIVE PROPERTY OF DIVERSIFIED WOODCRAFTS, INC.

THESE DOCUMENTS ARE SUPPLIED WITH THE UNDERSTANDING THAT THEY WILL NOT BE DISCLOSED TO THIRD PARTIES WITHOUT WRITTEN CONSENT OF DIVERSIFIED WOODCRAFTS, INC. ANY REPRODUCTION IN PART OR WHOLE WITHOUT WRITTEN CONSENT IS SUBJECT TO LEGAL ACTION.

300 South Krueger Street  
Suring, WI 54174  
diversifiedwoodcrafts.com

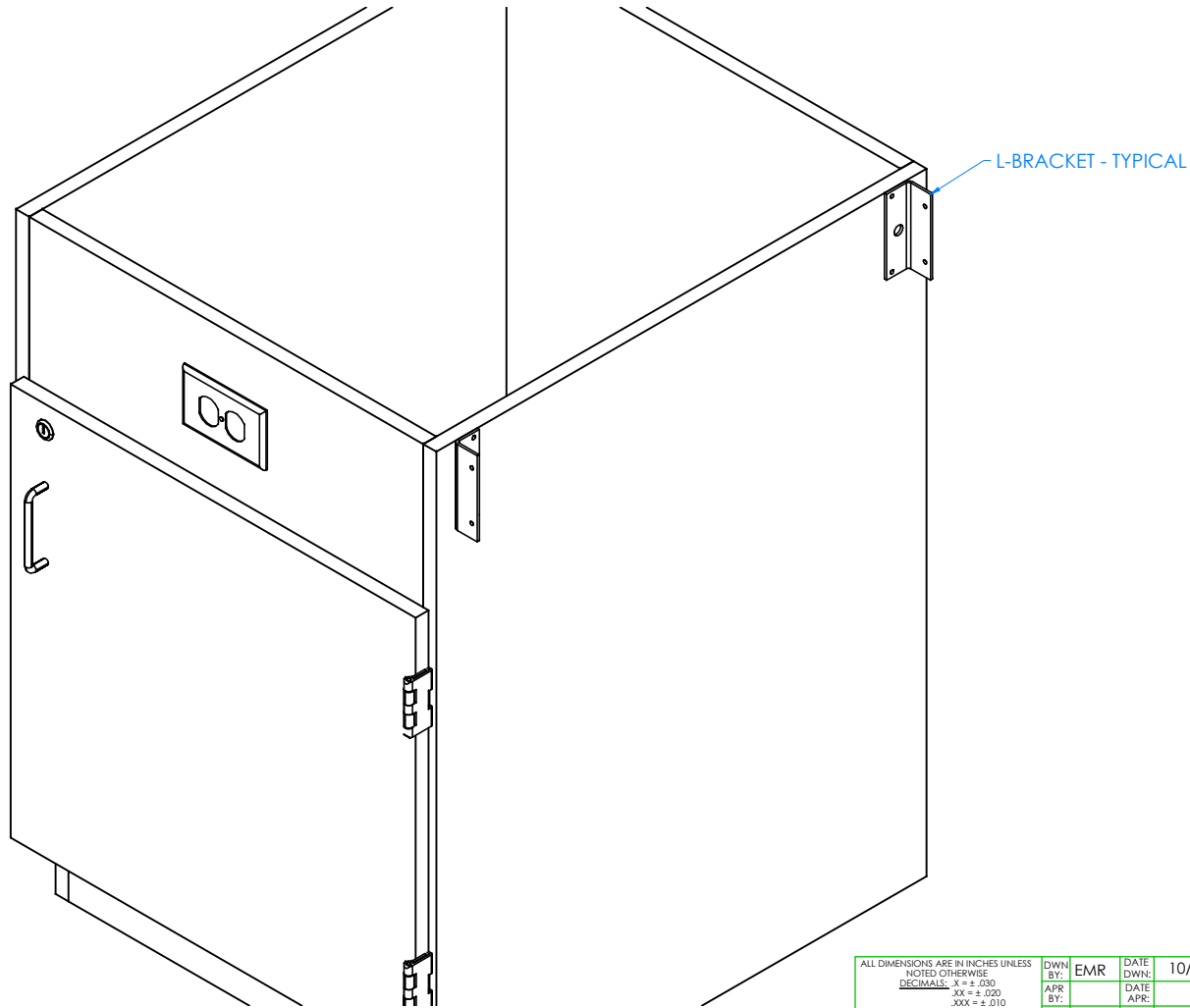
TITLE:  
STUDENT SERVICE ISLAND-SINGLE  
ASSEMBLY INSTRUCTIONS

DRAWING NUMBER:  
STUDENT SERVICE ISLAND

SCALE:  
NTS

SHEET:  
4 OF 13

REVISION:  
REV A



STEP 3:

- ATTACH L-BRACKETS TO RIGHT SIDE OF CABINET WITH HARDWARE PROVIDED.
- REPEAT FOR OTHER SIDE OF INTERNAL APRON ASSEMBLY.

NOTE:

1.

CLOSE UP OF RIGHT SIDE OF LEFT CABINET SHOWN

A	CREATED DRAWING	10/31/16	EMR	-
REV.	DESCRIPTION	DATE	NAME	ECN NO.
REVISION LEVEL				

ALL DIMENSIONS ARE IN INCHES UNLESS NOTED OTHERWISE	DWN BY:	EMR	DATE DWN:	10/31/16
DECIMALS: .X = ± .030	APR BY:		DATE APR:	
.XX = ± .020	APR BY:		DATE APR:	
.XXX = ± .010	APR BY:		DATE APR:	
ANGLES: = ± 1°	APR BY:		DATE APR:	
CABINET SQUARENESS: = ± .0625	APR BY:		DATE APR:	

CONFIDENTIAL:  
ALL DESIGN RIGHTS RESERVED  
THE INFORMATION, DATA, DESIGN, AND DRAWINGS EMBODIED IN THIS DOCUMENT AND ALL REPRODUCTIONS THEREOF ARE THE EXCLUSIVE PROPERTY OF DIVERSIFIED WOODCRAFTS, INC.

THESE DOCUMENTS ARE SUPPLIED WITH THE UNDERSTANDING THAT THEY WILL NOT BE DISCLOSED TO THIRD PARTIES WITHOUT WRITTEN CONSENT OF DIVERSIFIED WOODCRAFTS, INC. ANY REPRODUCTION IN PART OR WHOLE WITHOUT WRITTEN CONSENT IS SUBJECT TO LEGAL ACTION.



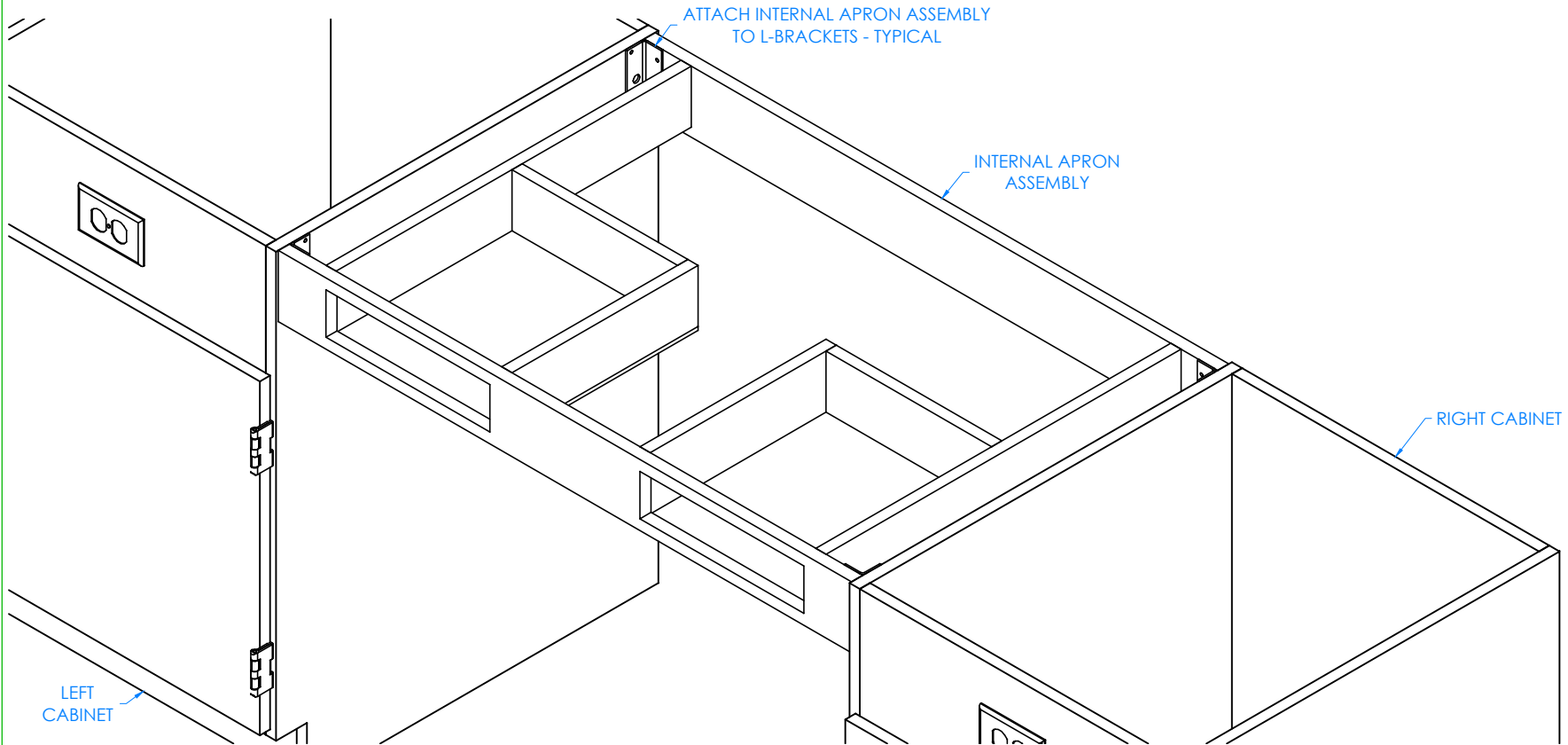
300 South Krueger Street  
Suring, WI 54174  
diversifiedwoodcrafts.com

TITLE:  
STUDENT SERVICE ISLAND-SINGLE  
ASSEMBLY INSTRUCTIONS

DRAWING NUMBER:	SCALE:	SHEET:	REVISION:
STUDENT SERVICE ISLAND	NTS	5 OF 13	REV A

STEP 4:

- WITH HELP FROM ANOTHER PERSON, PLACE INTERNAL APRON ASSEMBLY IN BETWEEN CABINETS AND ATTACH TO L-BRACKETS WITH REMAINING SCREWS PROVIDED.
- CONTINUE STEP IF YOU HAVE MULTIPLE INTERNAL APRON ASSEMBLIES (EX. C2530, C2730, C2540, OR C2740 SERIES).



NOTE:

1.

CLOSE UP OF INTERNAL APRON ASSEMBLY ATTACHED TO SIDE OF CABINET SHOWN

A	CREATED DRAWING	10/31/16	EMR	-
REV.	DESCRIPTION	DATE	NAME	ECN NO.
REVISION LEVEL				

ALL DIMENSIONS ARE IN INCHES UNLESS NOTED OTHERWISE	DWN BY:	EMR	DATE DWN:	10/31/16
DECIMALS: XX = ± .030	APR BY:		DATE APR:	
XX = ± .020	APR BY:		DATE APR:	
XXX = ± .010	APR BY:		DATE APR:	
ANGLES: = ± 1°	APR BY:		DATE APR:	
CABINET SQUARENESS: = ± .0625	APR BY:		DATE APR:	

CONFIDENTIAL:  
ALL DESIGN RIGHTS RESERVED  
THE INFORMATION, DATA, DESIGN, AND DRAWINGS EMBODIED IN THIS DOCUMENT AND ALL REPRODUCTIONS THEREOF ARE THE EXCLUSIVE PROPERTY OF DIVERSIFIED WOODCRAFTS, INC.

THESE DOCUMENTS ARE SUPPLIED WITH THE UNDERSTANDING THAT THEY WILL NOT BE DISCLOSED TO THIRD PARTIES WITHOUT WRITTEN CONSENT OF DIVERSIFIED WOODCRAFTS, INC. ANY REPRODUCTION IN PART OR WHOLE WITHOUT WRITTEN CONSENT IS SUBJECT TO LEGAL ACTION.

300 South Krueger Street  
Suring, WI 54174  
diversifiedwoodcrafts.com

TITLE:  
STUDENT SERVICE ISLAND-SINGLE  
ASSEMBLY INSTRUCTIONS

DRAWING NUMBER:  
STUDENT SERVICE ISLAND

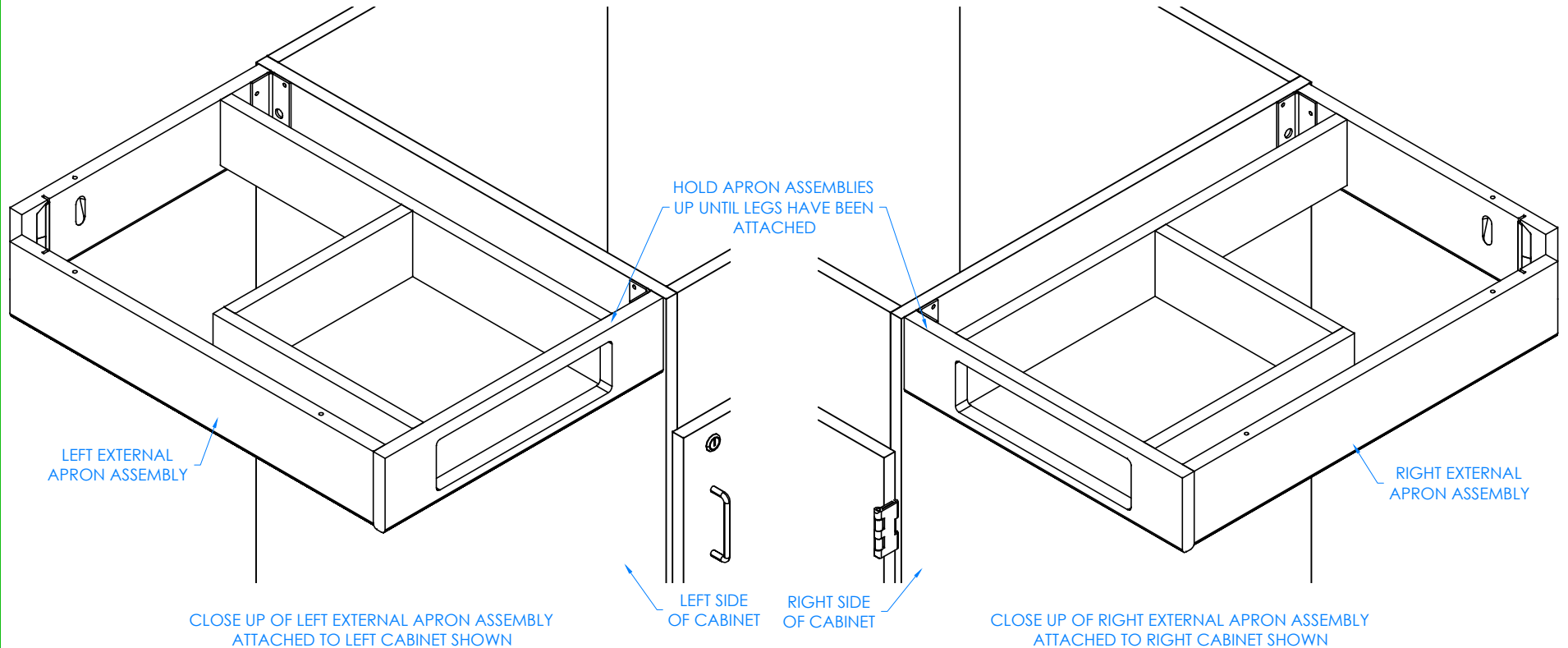
SCALE:  
NTS

SHEET:  
6 OF 13

REVISION:  
REV A

STEP 5:

- REPEAT STEPS 2-4 FOR EXTERNAL APRON ASSEMBLIES (BOTH LEFT AND RIGHT).
- SUPPORT BOTH ASSEMBLIES UNTIL LEGS HAVE BEEN ATTACHED, THEY ARE NOT STRONG ENOUGH TO WITHSTAND WEIGHT UNTIL LEGS AND TOP ARE ATTACHED.



NOTE:

1.

ALL DIMENSIONS ARE IN INCHES UNLESS NOTED OTHERWISE	DWN BY:	EMR	DATE DWN:	10/31/16
DECIMALS: $\frac{1}{16}$ = $\pm .030$	APR BY:		DATE APR:	
$\frac{1}{8}$ = $\pm .020$	APR BY:		DATE APR:	
$\frac{1}{4}$ = $\pm .010$	APR BY:		DATE APR:	
ANGLES: $\frac{1}{4}$ = $\pm .190$	APR BY:		DATE APR:	
CABINET SQUARENESS: = $\pm .0625$	APR BY:		DATE APR:	

CONFIDENTIAL:  
ALL DESIGN RIGHTS RESERVED  
THE INFORMATION, DATA, DESIGN, AND DRAWINGS EMBODIED IN THIS DOCUMENT AND ALL REPRODUCTIONS THEREOF ARE THE EXCLUSIVE PROPERTY OF DIVERSIFIED WOODCRAFTS, INC.

THESE DOCUMENTS ARE SUPPLIED WITH THE UNDERSTANDING THAT THEY WILL NOT BE DISCLOSED TO THIRD PARTIES WITHOUT WRITTEN CONSENT OF DIVERSIFIED WOODCRAFTS, INC. ANY REPRODUCTION IN PART OR WHOLE WITHOUT WRITTEN CONSENT IS SUBJECT TO LEGAL ACTION.

300 South Krueger Street  
Suring, WI 54174  
diversifiedwoodcrafts.com

TITLE:  
STUDENT SERVICE ISLAND-SINGLE  
ASSEMBLY INSTRUCTIONS

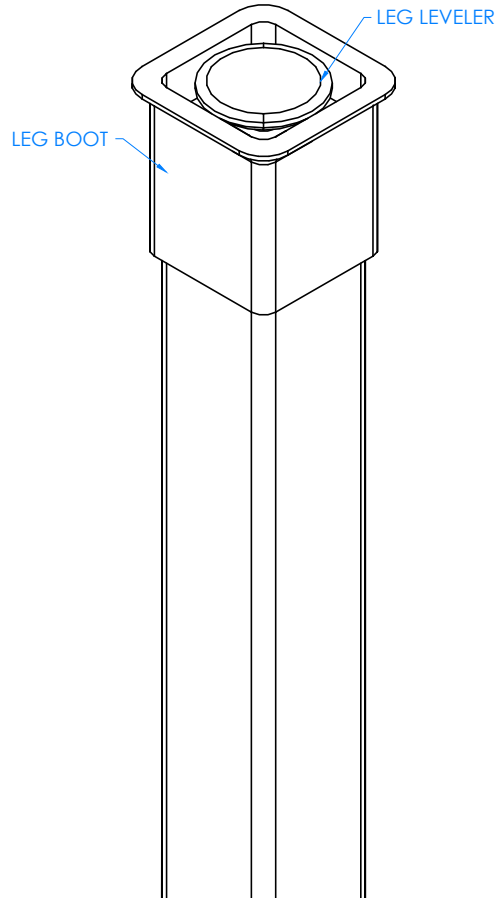
DRAWING NUMBER:  
STUDENT SERVICE ISLAND

SCALE:  
NTS

SHEET:  
7 OF 13

REVISION:  
REV A

A	CREATED DRAWING	10/31/16	EMR	-
REV.	DESCRIPTION	DATE	NAME	ECN NO.
REVISION LEVEL				



CLOSE UP OF LEG LEVELER AND LEG BOOT ASSEMBLY

STEP 6:

- SLIDE LEG BOOT ONTO LEGS WITH FLARED END TOWARDS BOTTOM OF LEGS.
- SCREW LEG LEVELERS INTO T-NUT ON BOTTOM OF LEGS.

NOTE:

1.

ALL DIMENSIONS ARE IN INCHES UNLESS NOTED OTHERWISE	DWN BY:	EMR	DATE DWN:	10/31/16
DECIMALS: $\pm .030$	APR BY:		DATE APR:	
ANGLES: $\pm 1^{\circ}0'$	APR BY:		DATE APR:	
CABINET SQUARENESS: $\pm .0625$				

CONFIDENTIAL:  
ALL DESIGN RIGHTS RESERVED  
THE INFORMATION, DATA, DESIGN, AND DRAWINGS EMBODIED IN THIS DOCUMENT AND ALL REPRODUCTIONS THEREOF ARE THE EXCLUSIVE PROPERTY OF DIVERSIFIED WOODCRAFTS, INC.

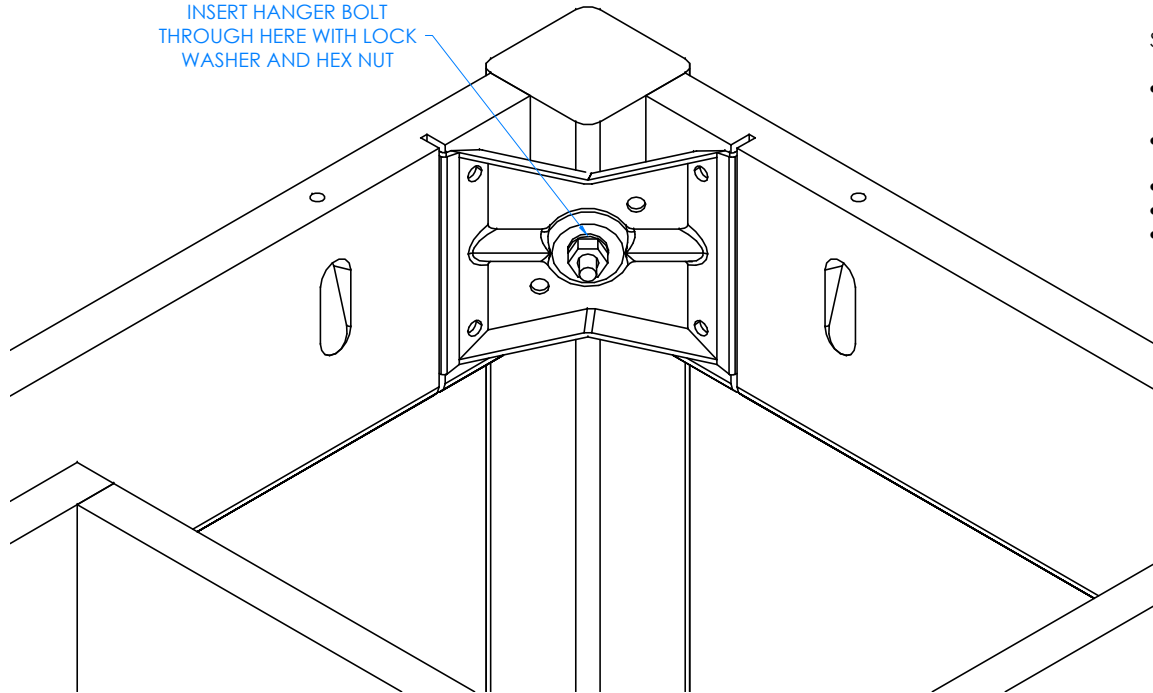
THESE DOCUMENTS ARE SUPPLIED WITH THE UNDERSTANDING THAT THEY WILL NOT BE DISCLOSED TO THIRD PARTIES WITHOUT WRITTEN CONSENT OF DIVERSIFIED WOODCRAFTS, INC. ANY REPRODUCTION IN PART OR WHOLE WITHOUT WRITTEN CONSENT IS SUBJECT TO LEGAL ACTION.

		300 South Krueger Street Suring, WI 54174 diversifiedwoodcrafts.com	
TITLE: STUDENT SERVICE ISLAND-SINGLE ASSEMBLY INSTRUCTIONS			
DRAWING NUMBER:		SCALE:	SHEET:
STUDENT SERVICE ISLAND		NTS	8 OF 13
		REVISION:	REV A

REV.	DESCRIPTION	DATE	NAME	ECN NO.
A	CREATED DRAWING	10/31/16	EMR	-
REVISION LEVEL				



INSERT HANGER BOLT  
THROUGH HERE WITH LOCK  
WASHER AND HEX NUT



## STEP 7:

- INSERT HANGER BOLT ON ONE LEG THROUGH THE CORNER BRACKET AND INSERT LOCK WASHER AND HEX NUT.
- TIGHTEN NUT USING A  $\frac{1}{2}$ " WRENCH OR  $\frac{1}{2}$ " SOCKET AND TORQUE WRENCH, TO A MINIMUM OF 12FT LBS BUT NOT TO EXCEED 17FT LBS.
- REPEAT FOR OTHER LEG.
- DO NOT APPLY PRESSURE TO APRONS AT THIS TIME.
- THEY ARE NOT STRONG ENOUGH TO WITHSTAND WEIGHT UNTIL TOP IS ATTACHED.

CLOSE UP OF CORNER BRACKET ASSEMBLY

## NOTE:

1.

ALL DIMENSIONS ARE IN INCHES UNLESS NOTED OTHERWISE	DWN BY:	EMR	DATE DWN:	10/31/16
DECIMALS: X = ± .030	APR BY:		DATE APR:	
XX = ± .020	APR BY:		DATE APR:	
XXX = ± .010	APR BY:		DATE APR:	
ANGLES: = ± 1°	APR BY:		DATE APR:	
CABINET SQUARENESS: = ± .0625	APR BY:		DATE APR:	

CONFIDENTIAL:  
ALL DESIGN RIGHTS RESERVED  
THE INFORMATION, DATA, DESIGN, AND DRAWINGS EMBODIED IN THIS DOCUMENT AND ALL REPRODUCTIONS THEREOF ARE THE EXCLUSIVE PROPERTY OF DIVERSIFIED WOODCRAFTS, INC.

THESE DOCUMENTS ARE SUPPLIED WITH THE UNDERSTANDING THAT THEY WILL NOT BE DISCLOSED TO THIRD PARTIES WITHOUT WRITTEN CONSENT OF DIVERSIFIED WOODCRAFTS, INC. ANY REPRODUCTION IN PART OR WHOLE WITHOUT WRITTEN CONSENT IS SUBJECT TO LEGAL ACTION.



300 South Krueger Street  
Suring, WI 54174  
diversifiedwoodcrafts.com

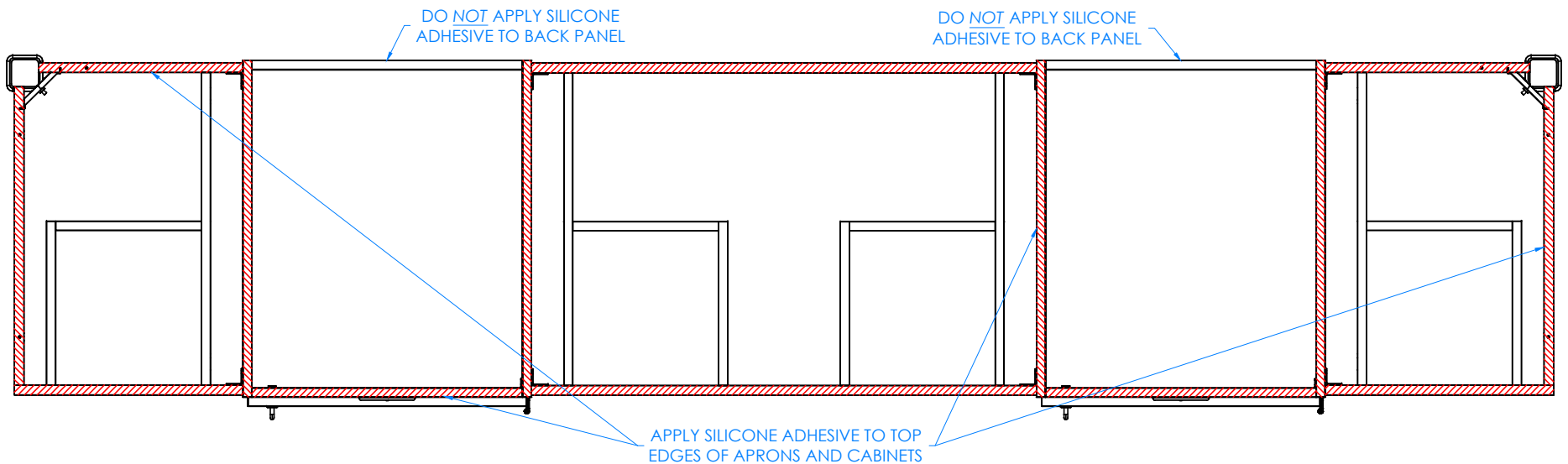
TITLE:  
STUDENT SERVICE ISLAND-SINGLE  
ASSEMBLY INSTRUCTIONS

A	CREATED DRAWING	10/31/16	EMR	-
REV.	DESCRIPTION	DATE	NAME	ECN NO.
REVISION LEVEL				

DRAWING NUMBER:	SCALE:	SHEET:	REVISION:
STUDENT SERVICE ISLAND	NTS	9 OF 13	REV A

## STEP 8:

- ADJUST LEG LEVELERS TO LEVEL LEGS WITH CABINET.
- APPLY SILICONE ADHESIVE TO TOP EDGES OF CABINET AND APRONS.
- PLACE TOP ON UNIT WITH PROPER OVERHANG (2" OVERHANG ON SIDES AND 1.25" ON FRONT AND BACK).
- APPLY A BEAD OF ADHESIVE TO THE EDGES OF TOPS AND PRESS FIRMLY TO CONNECT TOPS TOGETHER.
- WIPE OFF ANY EXCESS CAULK.
- CLAMP ON TOPS TO APRONS AND CABINETS TO REMOVE ANY WARP USING SHIMS AND C-CLAMPS, IF NEEDED, WHEN ALIGNING THE TOP (DO THIS BEFORE ADHESIVE ON EDGES SETS UP).
- LET CURE FOR 6-12 HOURS.
- DO NOT APPLY SILICONE ADHESIVE TO BACK PANELS.



TOP VIEW OF TABLE SHOWN

## NOTE:

1.

ALL DIMENSIONS ARE IN INCHES UNLESS NOTED OTHERWISE	DWN BY:	EMR	DATE DWN:	10/31/16
DECIMALS: $\times = \pm .030$	APR BY:		DATE APR:	
$\times \times = \pm .020$	APR BY:		DATE APR:	
$\times \times \times = \pm .010$	APR BY:		DATE APR:	
ANGLES: $= \pm 1^\circ$				
CABINET SQUARENESS: $= \pm .0625$				

CONFIDENTIAL:  
ALL DESIGN RIGHTS RESERVED  
THE INFORMATION, DATA, DESIGN, AND DRAWINGS EMBODIED IN THIS DOCUMENT AND ALL REPRODUCTIONS THEREOF ARE THE EXCLUSIVE PROPERTY OF DIVERSIFIED WOODCRAFTS, INC.

THESE DOCUMENTS ARE SUPPLIED WITH THE UNDERSTANDING THAT THEY WILL NOT BE DISCLOSED TO THIRD PARTIES WITHOUT WRITTEN CONSENT OF DIVERSIFIED WOODCRAFTS, INC. ANY REPRODUCTION IN PART OR WHOLE WITHOUT WRITTEN CONSENT IS SUBJECT TO LEGAL ACTION.



300 South Krueger Street  
Suring, WI 54174  
diversifiedwoodcrafts.com

TITLE:  
STUDENT SERVICE ISLAND-SINGLE  
ASSEMBLY INSTRUCTIONS

REV.	DESCRIPTION	DATE	NAME	ECN NO.
A	CREATED DRAWING	10/31/16	EMR	-
REVISION LEVEL				

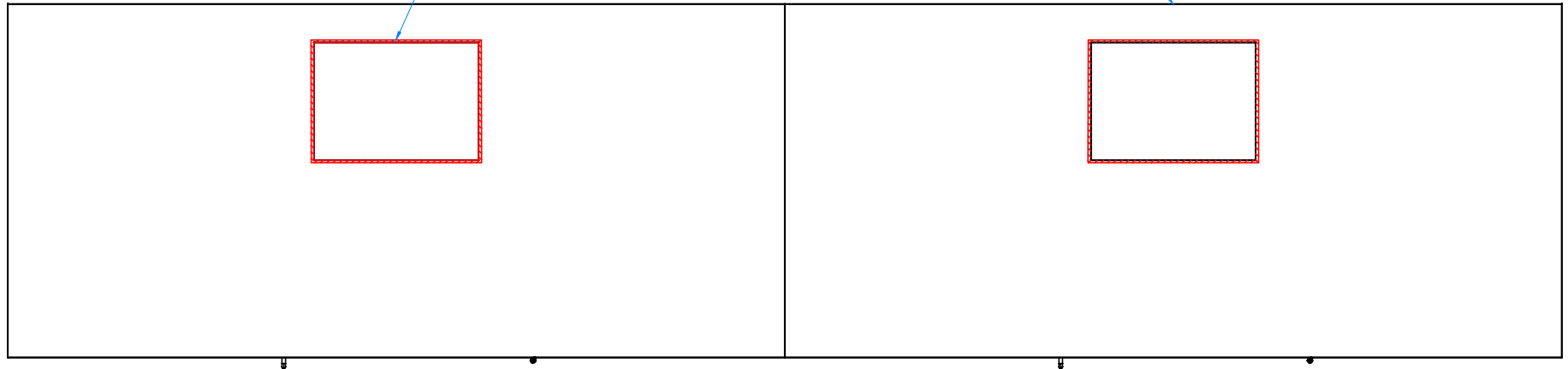
DRAWING NUMBER:	SCALE:	SHEET:	REVISION:
STUDENT SERVICE ISLAND	NTS	10 OF 13	REV A

## STEP 9:

- IF YOU DO NOT HAVE A "K" SERIES UNIT, SKIP TO STEP 10.
- APPLY SILICONE ADHESIVE TO SINK OPENINGS ON TOPS.
- LOWER SINKS INTO OPENINGS.
- WIPE OFF ANY EXCESS CAULK AND ALLOW TO SET.
- LET CURE FOR 6-12 HOURS.

APPLY SILICONE ADHESIVE  
AROUND OPENING FOR  
SINK - TYPICAL

TOP - TYPICAL



TOP VIEW OF TABLE SHOWN

## NOTE:

1.

ALL DIMENSIONS ARE IN INCHES UNLESS NOTED OTHERWISE	DWN BY:	EMR	DATE DWN:	10/31/16
DECIMALS: $\frac{1}{16} = \pm .030$	APR BY:		DATE APR:	
$\frac{1}{8} = \pm .020$	APR BY:		DATE APR:	
$\frac{3}{16} = \pm .010$	APR BY:		DATE APR:	
ANGLES: $\pm 1^{\circ}$	APR BY:		DATE APR:	
CABINET SQUARENESS: $\pm .0625$	APR BY:		DATE APR:	

CONFIDENTIAL:  
ALL DESIGN RIGHTS RESERVED  
THE INFORMATION, DATA, DESIGN, AND DRAWINGS EMBODIED  
IN THIS DOCUMENT AND ALL REPRODUCTIONS THEREOF ARE  
THE EXCLUSIVE PROPERTY OF DIVERSIFIED WOODCRAFTS, INC.

THESE DOCUMENTS ARE SUPPLIED WITH THE UNDERSTANDING  
THAT THEY WILL NOT BE DISCLOSED TO THIRD PARTIES WITHOUT  
WRITTEN CONSENT OF DIVERSIFIED WOODCRAFTS, INC. ANY  
REPRODUCTION IN PART OR WHOLE WITHOUT WRITTEN  
CONSENT IS SUBJECT TO LEGAL ACTION.

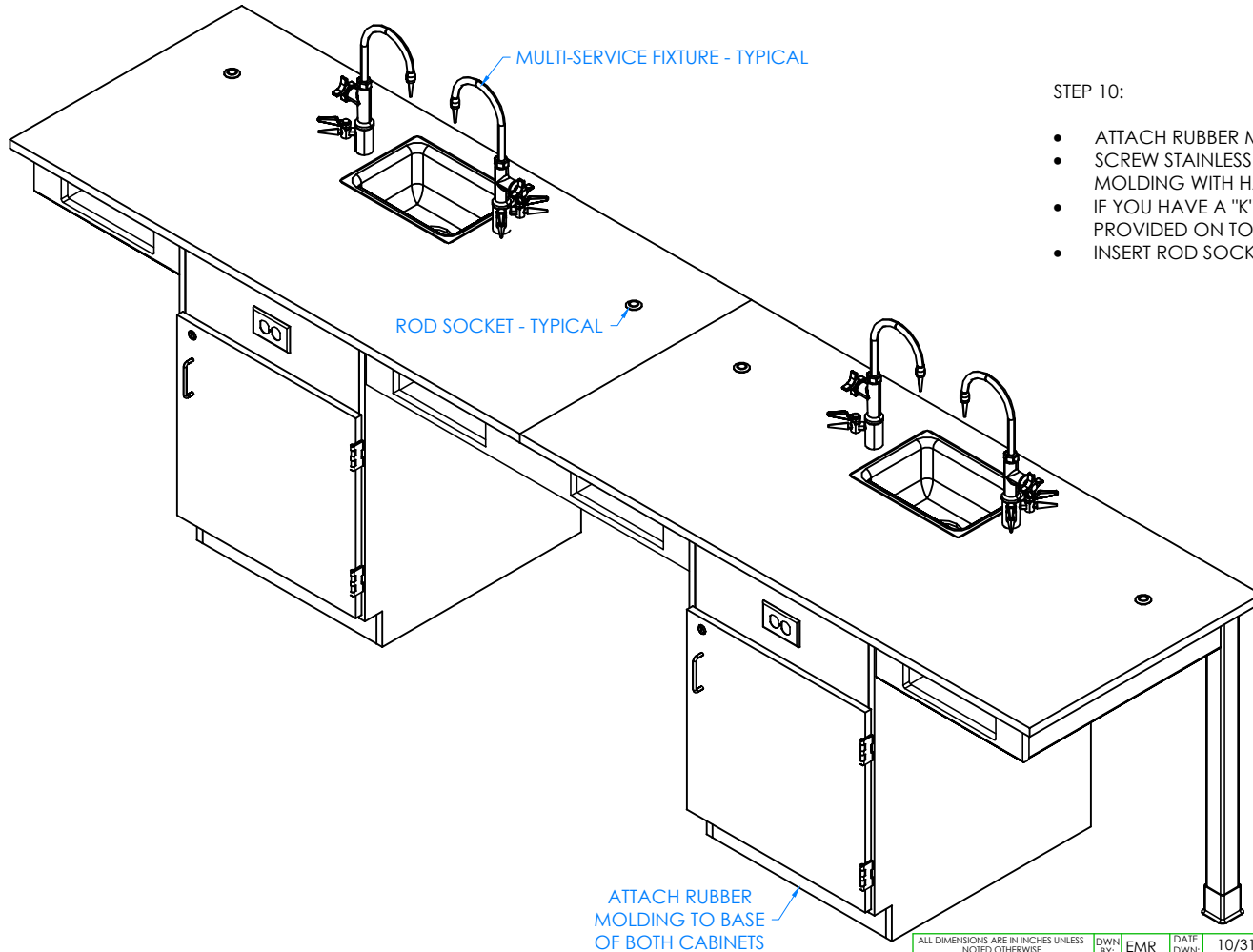


300 South Krueger Street  
Suring, WI 54174  
diversifiedwoodcrafts.com

TITLE:  
STUDENT SERVICE ISLAND-SINGLE  
ASSEMBLY INSTRUCTIONS

REV.	DESCRIPTION	DATE	NAME	ECN NO.
A	CREATED DRAWING	10/31/16	EMR	-
REVISION LEVEL				

DRAWING NUMBER:	SCALE:	SHEET:	REVISION:
STUDENT SERVICE ISLAND	NTS	11 OF 13	REV A



STEP 10:

- ATTACH RUBBER MOLDING TO BASE OF CABINETS USING CONTACT CEMENT.
- SCREW STAINLESS STEEL CORNER BRACKETS ON EACH CORNER OVER BASE MOLDING WITH HARDWARE PROVIDED.
- IF YOU HAVE A "K" SERIES UNIT, INSTALL MULTI-SERVICE FIXTURES IN HOLES PROVIDED ON TOPS.
- INSERT ROD SOCKETS INTO PRE-DRILLED HOLES IN TOP.

NOTE:

1. ALL WATER, ELECTRICAL, AND GAS CONNECTIONS SHOULD BE PERFORMED BY A TRAINED PROFESSIONAL PER LOCAL CODE.

REV.	DESCRIPTION	DATE	NAME	ECN NO.
A	CREATED DRAWING	10/31/16	EMR	-
REVISION LEVEL				

ALL DIMENSIONS ARE IN INCHES UNLESS NOTED OTHERWISE  
 DECIMALS: X = ± .030  
 XX = ± .020  
 XXX = ± .010  
 ANGLES: = ± 1°  
 CABINET SQUARENESS: = ± .0625

CONFIDENTIAL:  
 ALL DESIGN RIGHTS RESERVED  
 THE INFORMATION, DATA, DESIGN, AND DRAWINGS EMBODIED IN THIS DOCUMENT AND ALL REPRODUCTIONS THEREOF ARE THE EXCLUSIVE PROPERTY OF DIVERSIFIED WOODCRAFTS, INC.

THESE DOCUMENTS ARE SUPPLIED WITH THE UNDERSTANDING THAT THEY WILL NOT BE DISCLOSED TO THIRD PARTIES WITHOUT WRITTEN CONSENT OF DIVERSIFIED WOODCRAFTS, INC. ANY REPRODUCTION IN PART OR WHOLE WITHOUT WRITTEN CONSENT IS SUBJECT TO LEGAL ACTION.

DWN BY:	EMR	DATE DWN:	10/31/16
APR BY:		DATE APR:	
APR BY:		DATE APR:	

COMPLETE UNIT SHOWN



300 South Krueger Street  
 Suring, WI 54174  
 diversifiedwoodcrafts.com

TITLE:  
 STUDENT SERVICE ISLAND-SINGLE  
 ASSEMBLY INSTRUCTIONS

DRAWING NUMBER:	SCALE:	SHEET:	REVISION:
STUDENT SERVICE ISLAND	NTS	12 OF 13	REV A

## **TROUBLESHOOTING YOUR GFCI ELECTRICAL RECEPTACLE:**

**PLEASE NOTE: THROUGHOUT ANY OF THE FOLLOWING STEPS (PROCEDURES); IF YOU ARE NOT SURE YOU CAN DO THIS JOB SAFELY, AND COMPETENTLY, REFER THIS WORK TO QUALIFIED PROFESSIONAL!**

**If your unit comes equipped with a GFCI (Ground Fault Circuit Interrupter) electrical receptacle, and there is no power in the receptacle please consider/check the following:**

- The extension cord (if being used) is working properly.
- The breaker hasn't been tripped, or turned off.

This type of GFCI has two testing-related buttons on it. One button is appropriately labeled "TEST", and the other button is labeled "RESET". To test the GFCI receptacle follow these steps:

- Plug in an appliance (lamp or night light) into the outlet. The light should now be on. Then press the "TEST" button on the GFCI. The GFCI "RESET" button should pop out, and the light should go out.
- If the "RESET" button pops out, but the light doesn't go out, the GFCI has been improperly wired. In this case please contact a certified professional. There may also be a problem with other wiring in the same circuit.
- If the "RESET" button doesn't pop out, the GFCI is defective, or malfunctioned, and should be replaced.
- If the GFCI is functioning properly, and the lamp goes out, press the "RESET" button to restore power to the outlet.

Conversely, if you have a GFI that has tripped (which is common) and it will not reset, you may have a wiring short in the circuit, a defective appliance on the circuit, or the GFI itself has become defective. To test a tripping GFCI follow these steps:

- Remove every appliance connected to the GFCI's circuit and reset it. If it doesn't reset there may either be a wiring fault behind a socket outlet, or your GFCI itself has become faulty.
- Make sure whatever you are plugging into the GFCI is dry and not damaged.
- Only plug in one item at a time. If you are plugging in a defective item it will cause the GFCI to trip, and that item therefore should be replaced.

If you are still having difficulty the easiest way to troubleshoot a GFI is to obtain a GFI tester, which is available at most hardware stores. It plugs into the GFI outlet, and will supply you with a "snapshot" of your connections, indicating wiring problems and/or the condition of the GFI. Another way to troubleshoot is to simply purchase a new GFI and install it.