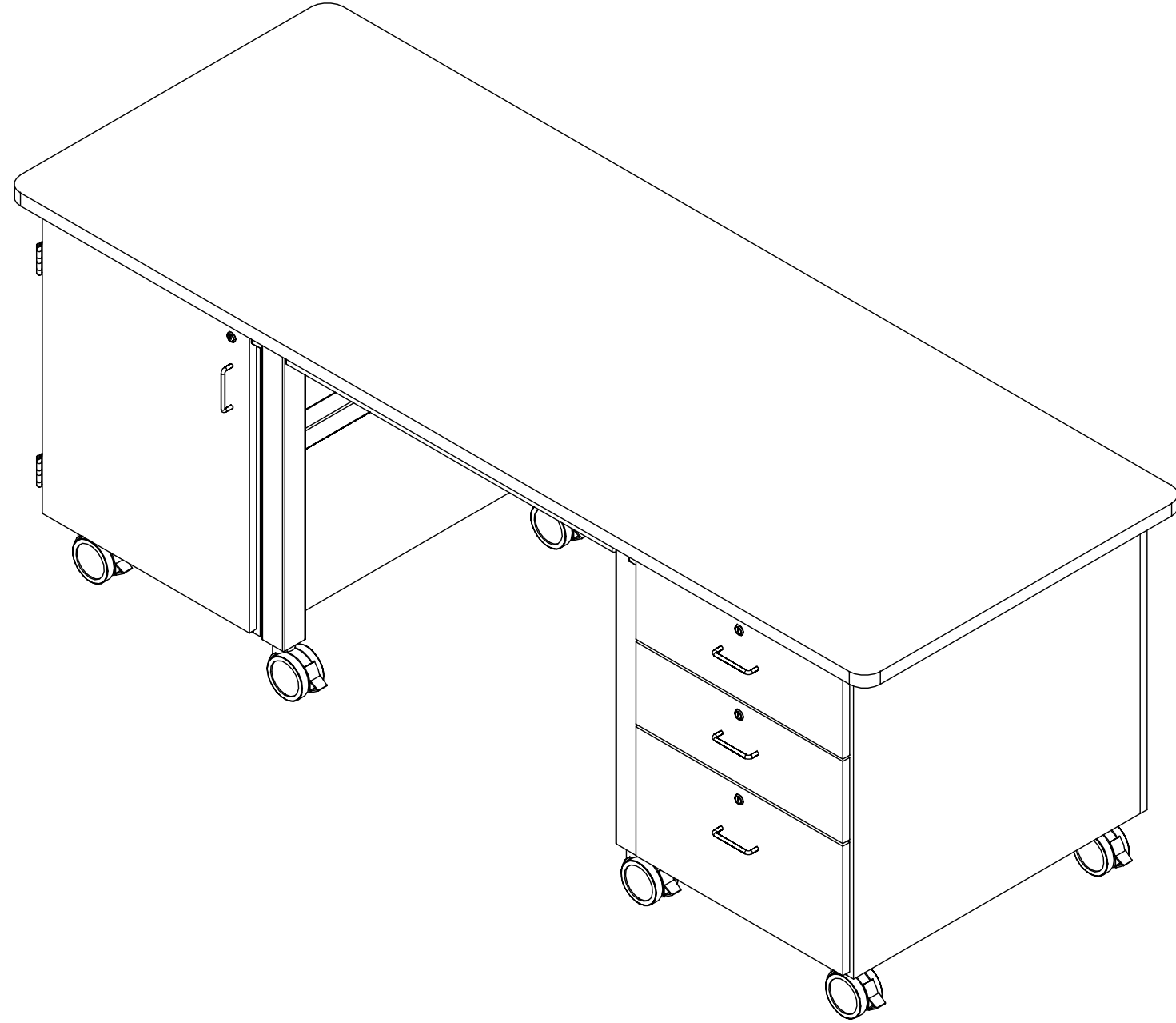


# MOBILE DEMO WORKSTATION

HFDL & HFDR SERIES (OAK OR MAPLE)  
ASSEMBLY INSTRUCTIONS



**NOTE:**

1. MODEL VIEWS MAY NOT REPRESENT EXACT MODEL PURCHASED

ALL DIMENSIONS ARE IN INCHES UNLESS NOTED OTHERWISE DECIMALS: .X = ± .030 .XX = ± .020 .XXX = ± .010 ANGLES: = ± 1° CABINET SQUARENESS = ± .0625	DWN BY: EMR APR BY: APR BY:	DATE DWN: 11/4/21 DATE APR: DATE APR:
---	-----------------------------------	---



300 South Krueger Street  
Suring, WI 54174  
diversifiedwoodcrafts.com

CONFIDENTIAL:  
ALL DESIGN RIGHTS RESERVED.  
THE INFORMATION, DATA, DESIGN, AND DRAWINGS EMBODIED IN THIS DOCUMENT AND ALL REPRODUCTIONS THEREOF ARE THE EXCLUSIVE PROPERTY OF DIVERSIFIED WOODCRAFTS, INC.

TITLE:  
MOBILE DEMO WORKSTATION  
ASSEMBLY INSTRUCTIONS

THESE DOCUMENTS ARE SUPPLIED WITH THE UNDERSTANDING THAT THEY WILL NOT BE DISCLOSED TO THIRD PARTIES WITHOUT WRITTEN CONSENT OF DIVERSIFIED WOODCRAFTS, INC. ANY REPRODUCTION IN PART OR WHOLE WITHOUT WRITTEN CONSENT IS SUBJECT TO LEGAL ACTION.

REV.	DESCRIPTION	DATE	NAME	ECN No.
D	B33 CABINET CHANGED TO B25 CABINET	4/3/2024	RJM	1466
A	CREATED DRAWING	11/4/21	EMR	N/A
REVISION LEVEL				

DRAWING NUMBER: <b>HFDL &amp; HFDR SERIES</b>	SCALE: NTS	SHEET: 1 OF 14	REVISION: REV D
--	---------------	-------------------	--------------------

# TOOLS REQUIRED

1/2" WRENCH
1/2" SOCKET AND TORQUE WRENCH - OPTIONAL
DRILL
1/8" DRILL BIT
**C-CLAMPS**
**SHIM STOCK (IF NEEDED)**

# ASSEMBLY COMPONENTS

ITEMS INCLUDED	PART #	PART DESCRIPTION	QTY
CABINET	N/A	B95 OR B96 - (SIZE VARIES)	1
CABINET	N/A	B25 - (SIZE VARIES)	1
SHELF CLIPS	100027	SHELF CLIPS,PLASTIC,5MM PIN	4
BACK	N/A	APPLIED BACK - 0.75"THK x (SIZE VARIES)	1
SCREWS - BACK	100478	SCREW,#8X1 1/4 SQ. WASHER FLAT HEAD	12
TOP	VARIES	TOP,(STYLE VARIES),(SIZE VARIES), (COLOR VARIES)	1
SCREW - TOP	100369	SCREW,#12.00X7/8 PHIL PAN HEAD SMS	24
METAL FRAME - STRINGER KIT	255254-X-KIT	STRINGER KIT,STEEL,2.50X36.75X2.00,(COLOR VARIES),MATTE/SATIN,QTY 2	1
METAL FRAME - LEG KIT	VARIES	LEG KIT,STEEL,H-FRAME,(COLOR VARIES),MATTE/SATIN	2
METAL FRAME - BOLTS	256915	BOLT,3/8"-16X4-1/2"L,BUTTON HEAD,HEX,BLK	8
METAL FRAME - NUTS	255266	NUT,LOCK,3/8"-16,ZINC FINISH,NYLON JAM LOCK NUT	8
CASTERS - LEGS	255813	CASTER,DUETTO,100MM TWIN WHEEL,BLACK,TOTAL LOCKING DEVICE	4
CASTER - CABINETS	256909	CASTER,DUETTO,100MM TWIN WHEEL,BLK,TOTAL LOCK,PLATE	4
CASTER HARDWARE	256912	CASTER,ASSY,HDWRE,16-SCREWS,16-NUTS, 12-24	1
LEG TO CABINET BRACKET	258380	BRACKET,STEEL,14GAX1.5X4.5,ZINC PLATED	4

NOTE:

1. COMPONENTS VARY WITH STYLE OF TABLE PURCHASED.
  - 1.1. FRAME COLORS:
    - 1.1.1. BLACK, WHITE, CARROT, LIME, AQUA, SILVER, LIGHT GREY, OR DARK GREY.
  - 1.2. TOP SELECTIONS:
    - 1.2.1. CHEMGUARD, PHENOLIC, 1 3/4" MAPLE, EPOXY, SHOPTOP, BUTCHER BLOCK (WALNUT), OR HPL.
  - 1.3. SIZES OF TABLE:
    - 1.3.1. WIDTH = 84" or 96"; DEPTH = 30" or 36"; HEIGHT = 30" or 36".
2. \*\*XX\*\* INDICATES ITEMS THAT MAY NOT COME WITH UNIT (DEPENDING ON MODEL PURCHASED).


REV.	DESCRIPTION	DATE	NAME	ECN No.
D	B33 CABINET CHANGED TO B25 CABINET	4/3/2024	RJM	1466
A	CREATED DRAWING	11/4/21	EMR	N/A
REVISION LEVEL				

ALL DIMENSIONS ARE IN INCHES UNLESS NOTED OTHERWISE  
 DECIMALS: .X = ± .030  
 .XX = ± .020  
 .XXX = ± .010  
 ANGLES: = ± 1°  
 CABINET SQUARENESS = ± .0625

DWN BY: EMR DATE DWN: 11/4/21  
 APR BY: DATE APR:  
 APR BY: DATE APR:

CONFIDENTIAL:  
 ALL DESIGN RIGHTS RESERVED  
 THE INFORMATION, DATA, DESIGN, AND DRAWINGS EMBODIED IN THIS DOCUMENT AND ALL REPRODUCTIONS THEREOF ARE THE EXCLUSIVE PROPERTY OF DIVERSIFIED WOODCRAFTS, INC.

THESE DOCUMENTS ARE SUPPLIED WITH THE UNDERSTANDING THAT THEY WILL NOT BE DISCLOSED TO THIRD PARTIES WITHOUT WRITTEN CONSENT OF DIVERSIFIED WOODCRAFTS, INC. ANY REPRODUCTION IN PART OR WHOLE WITHOUT WRITTEN CONSENT IS SUBJECT TO LEGAL ACTION.



300 South Krueger Street  
 Suring, WI 54174  
 diversifiedwoodcrafts.com

TITLE: MOBILE DEMO WORKSTATION TOOLS AND ASSEMBLY COMPONENTS

DRAWING NUMBER:	SCALE:	SHEET:	REVISION:
HFDR & HFDR SERIES	NTS	2 OF 14	REV D

# ASSEMBLY COMPONENTS

ITEMS INCLUDED	PART #	PART DESCRIPTION	QTY
SCREW - LEG TO CABINET BRACKET	100111	SCREW, #8X5/8 TRUSS HEAD	12
**SILICONE**	100711	SILICONE, SEALANT, CLEAR	4

NOTE:

1. COMPONENTS VARY WITH STYLE OF TABLE PURCHASED.
  - 1.1. FRAME COLORS:
    - 1.1.1. BLACK, WHITE, CARROT, LIME, AQUA, SILVER, LIGHT GREY, OR DARK GREY.
  - 1.2. TOP SELECTIONS:
    - 1.2.1. CHEMGUARD, PHENOLIC, 1<sup>3</sup>/<sub>4</sub>" MAPLE, EPOXY, SHOPTOP, BUTCHER BLOCK (WALNUT), OR HPL.
  - 1.3. SIZES OF TABLE:
    - 1.3.1. WIDTH = 84" or 96"; DEPTH = 30" or 36"; HEIGHT = 30" or 36".
2. \*\*XX\*\* INDICATES ITEMS THAT MAY NOT COME WITH UNIT (DEPENDING ON MODEL PURCHASED).

REV.	DESCRIPTION	DATE	NAME	ECN No.
D	B33 CABINET CHANGED TO B25 CABINET	4/3/2024	RJM	1466
A	CREATED DRAWING	11/4/21	EMR	N/A
REVISION LEVEL				

ALL DIMENSIONS ARE IN INCHES UNLESS NOTED OTHERWISE DECIMALS: .X = ± .030 .XX = ± .020 .XXX = ± .010 ANGLES: = ± 1° CABINET SQUARENESS = ± .0625	DWN BY: APR BY: APR BY:	EMR DATE DWN: 11/4/21 DATE APR: DATE APR:
CONFIDENTIAL: ALL DESIGN RIGHTS RESERVED THE INFORMATION, DATA, DESIGN, AND DRAWINGS EMBODIED IN THIS DOCUMENT AND ALL REPRODUCTIONS THEREOF ARE THE EXCLUSIVE PROPERTY OF DIVERSIFIED WOODCRAFTS, INC.  THESE DOCUMENTS ARE SUPPLIED WITH THE UNDERSTANDING THAT THEY WILL NOT BE DISCLOSED TO THIRD PARTIES WITHOUT WRITTEN CONSENT OF DIVERSIFIED WOODCRAFTS, INC. ANY REPRODUCTION IN PART OR WHOLE WITHOUT WRITTEN CONSENT IS SUBJECT TO LEGAL ACTION.		



300 South Krueger Street  
Suring, WI 54174  
diversifiedwoodcrafts.com

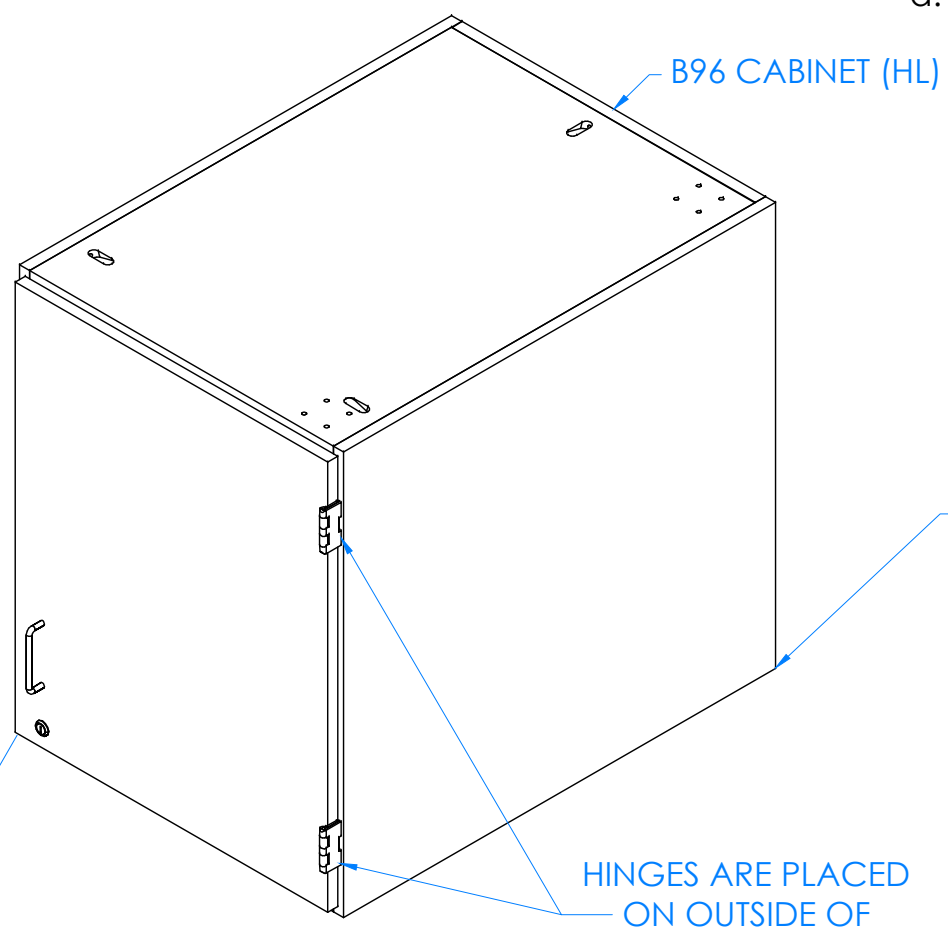
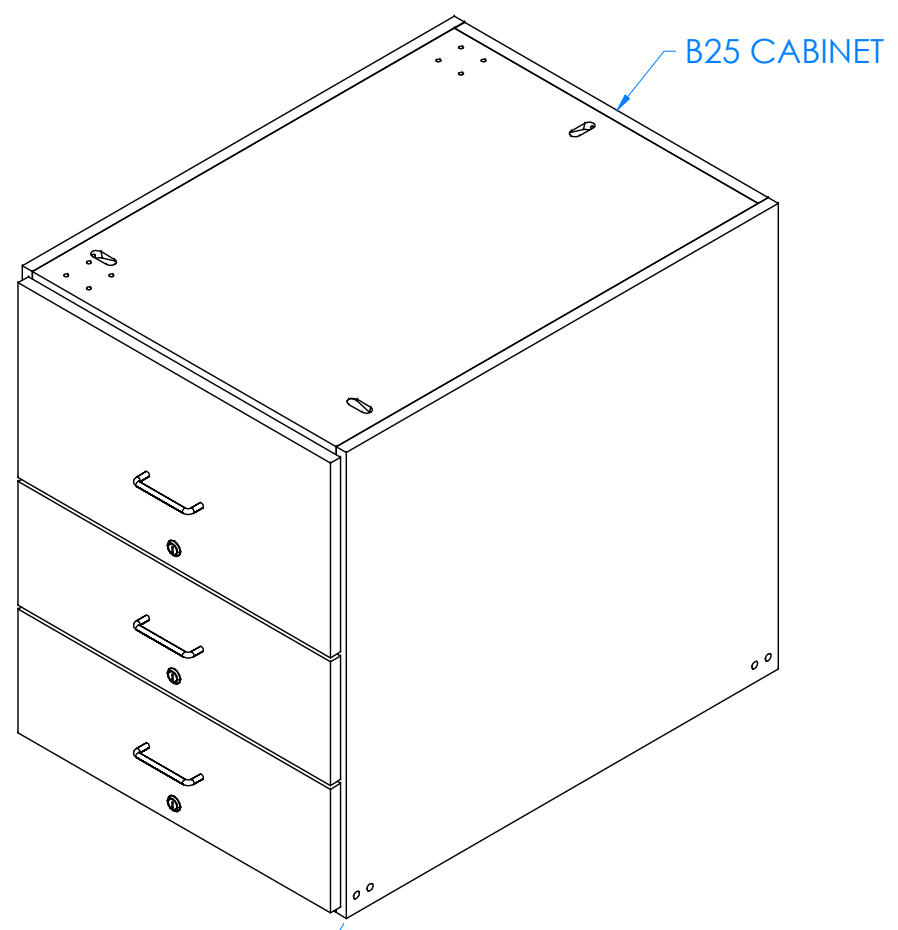
---

TITLE: MOBILE DEMO WORKSTATION TOOLS AND ASSEMBLY COMPONENTS

---

DRAWING NUMBER:	SCALE:	SHEET:	REVISION:
<b>HFDL &amp; HFDR SERIES</b>	NTS	3 OF 14	REV D

HARDWARE REQUIRED FOR STEP		
QTY	DESCRIPTION	PART NUMBER
1	CABINET	N/A
1	CABINET	N/A



STEP 1:

- a. WITH HELP FROM ANOTHER PERSON, FLIP THE TWO BASE CABINETS OVER.
- b. LEAVE ENOUGH ROOM IN BETWEEN CABINETS FOR METAL FRAME.
- c. MAKE SURE CABINETS ARE PLACED IN PROPER LOCATIONS!
- d. HINGE SIDE OF DOOR CABINET SHOULD ALWAYS BE FACING OUTWARD.

**\*\*NOTE\*\***  
BE SURE CABINETS ARE ON A CLEAN SURFACE TO PREVENT DAMAGE

42.25

NOTE:

1.

ALL DIMENSIONS ARE IN INCHES UNLESS NOTED OTHERWISE DECIMALS: .X = ± .030 .XX = ± .020 .XXX = ± .010 ANGLES: = ± 1° CABINET SQUARENESS = ± .0625	DWN BY: EMR APR BY: APR BY:	DATE DWN: 11/4/21 DATE APR: DATE APR:
---	-----------------------------------	---



300 South Krueger Street  
Suring, WI 54174  
diversifiedwoodcrafts.com

CONFIDENTIAL:  
ALL DESIGN RIGHTS RESERVED.  
THE INFORMATION, DATA, DESIGN, AND DRAWINGS EMBODIED IN THIS DOCUMENT AND ALL REPRODUCTIONS THEREOF ARE THE EXCLUSIVE PROPERTY OF DIVERSIFIED WOODCRAFTS, INC.

TITLE:  
MOBILE DEMO WORKSTATION  
ASSEMBLY INSTRUCTIONS

THESE DOCUMENTS ARE SUPPLIED WITH THE UNDERSTANDING THAT THEY WILL NOT BE DISCLOSED TO THIRD PARTIES WITHOUT WRITTEN CONSENT OF DIVERSIFIED WOODCRAFTS, INC. ANY REPRODUCTION IN PART OR WHOLE WITHOUT WRITTEN CONSENT IS SUBJECT TO LEGAL ACTION.

DRAWING NUMBER: <b>HFDL &amp; HFDR SERIES</b>	SCALE: NTS	SHEET: 4 OF 14	REVISION: REV D
--	---------------	-------------------	--------------------

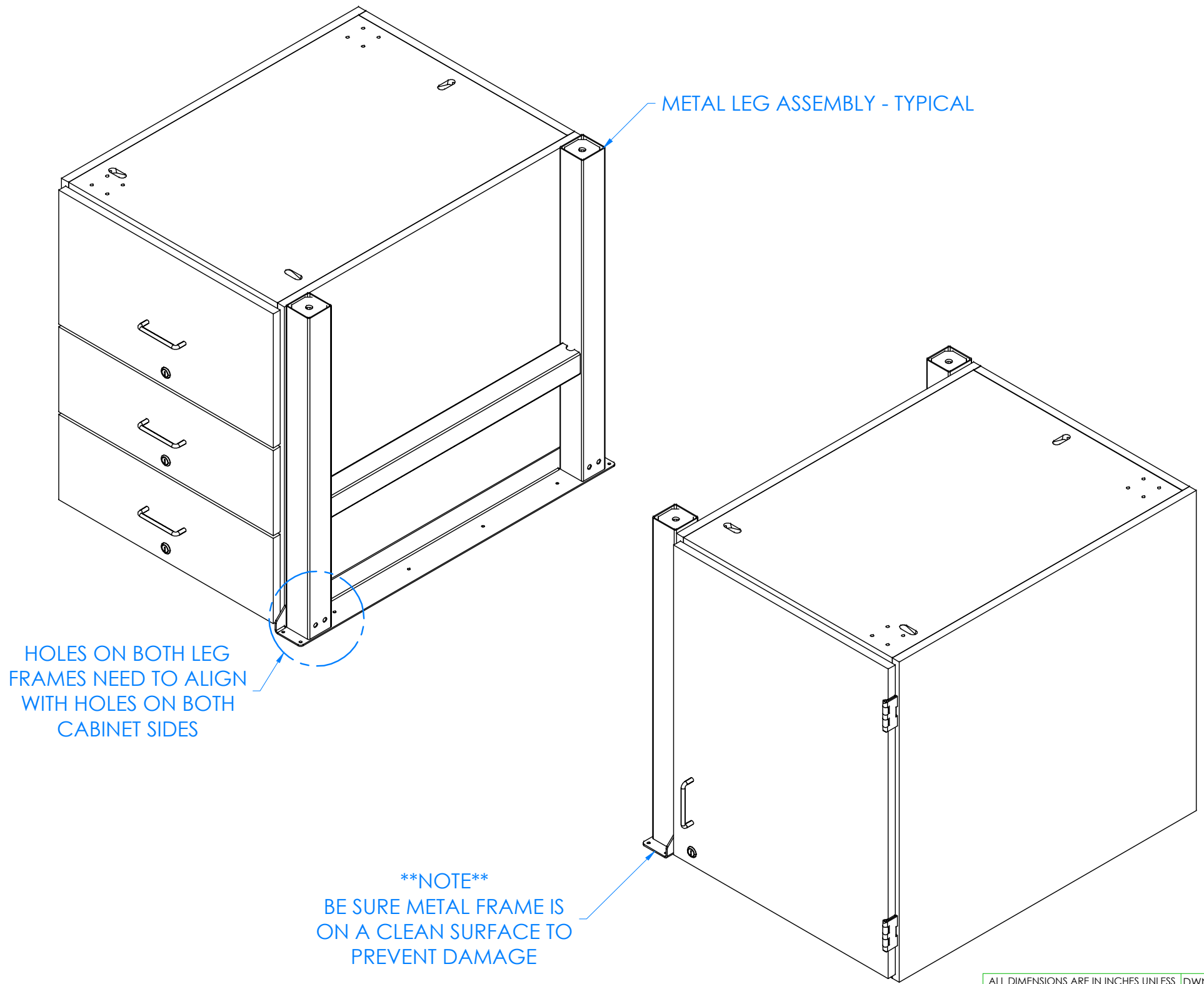
REV.	DESCRIPTION	DATE	NAME	ECN No.
D	B33 CABINET CHANGED TO B25 CABINET	4/3/2024	RJM	1466
A	CREATED DRAWING	11/4/21	EMR	N/A
REVISION LEVEL				

### HARDWARE REQUIRED FOR STEP

QTY	DESCRIPTION	PART NUMBER
2	METAL FRAME - LEG KIT	VARIES

STEP 2:

- a. PLACE THE TWO LEG FRAMES IN BETWEEN THE TWO CABINETS.
- b. ALIGN HOLES ON LEG FRAME TO THE HOLES ON EACH SIDE OF CABINETS.



NOTE:

1.

ALL DIMENSIONS ARE IN INCHES UNLESS NOTED OTHERWISE DECIMALS: .X = ± .030 .XX = ± .020 .XXX = ± .010 ANGLES: = ± 1° CABINET SQUARENESS = ± .0625	DWN BY: EMR APR BY: APR BY:	DATE DWN: 11/4/21 DATE APR: DATE APR:
---	-----------------------------------	---



300 South Krueger Street  
Suring, WI 54174  
diversifiedwoodcrafts.com

CONFIDENTIAL:  
ALL DESIGN RIGHTS RESERVED.  
THE INFORMATION, DATA, DESIGN, AND DRAWINGS EMBODIED IN THIS DOCUMENT AND ALL REPRODUCTIONS THEREOF ARE THE EXCLUSIVE PROPERTY OF DIVERSIFIED WOODCRAFTS, INC.

THESE DOCUMENTS ARE SUPPLIED WITH THE UNDERSTANDING THAT THEY WILL NOT BE DISCLOSED TO THIRD PARTIES WITHOUT WRITTEN CONSENT OF DIVERSIFIED WOODCRAFTS, INC. ANY REPRODUCTION IN PART OR WHOLE WITHOUT WRITTEN CONSENT IS SUBJECT TO LEGAL ACTION.

TITLE:  
**MOBILE DEMO WORKSTATION  
ASSEMBLY INSTRUCTIONS**

REV.	DESCRIPTION	DATE	NAME	ECN No.
D	B33 CABINET CHANGED TO B25 CABINET	4/3/2024	RJM	1466
A	CREATED DRAWING	11/4/21	EMR	N/A
REVISION LEVEL				

DRAWING NUMBER: <b>HFDL &amp; HFDR SERIES</b>	SCALE: NTS	SHEET: 5 OF 14	REVISION: REV D
--	---------------	-------------------	--------------------

## HARDWARE REQUIRED FOR STEP

QTY	DESCRIPTION	PART NUMBER
1	METAL FRAME - STRINGER KIT	255254-X-KIT

STEP 3:

- a. LOWER STRINGERS DOWN INTO POSITION.
- b. HOLES ON STRINGERS NEED TO ALIGN WITH HOLES ON LEG ASSEMBLIES.

STRINGER HOLES NEED TO ALIGN WITH HOLES ON BOTH LEG ASSEMBLIES AND CABINETS

STRINGER - TYPICAL

NOTE:

1.

ALL DIMENSIONS ARE IN INCHES UNLESS NOTED OTHERWISE DECIMALS: .X = ± .030 .XX = ± .020 .XXX = ± .010 ANGLES: = ± 1° CABINET SQUARENESS = ± .0625	DWN BY: EMR APR BY: APR BY:	DATE DWN: 11/4/21 DATE APR: DATE APR:
---	-----------------------------------	---



300 South Krueger Street  
Suring, WI 54174  
diversifiedwoodcrafts.com

CONFIDENTIAL:  
ALL DESIGN RIGHTS RESERVED  
THE INFORMATION, DATA, DESIGN, AND DRAWINGS EMBODIED IN THIS DOCUMENT AND ALL REPRODUCTIONS THEREOF ARE THE EXCLUSIVE PROPERTY OF DIVERSIFIED WOODCRAFTS, INC.

TITLE:  
MOBILE DEMO WORKSTATION  
ASSEMBLY INSTRUCTIONS

THESE DOCUMENTS ARE SUPPLIED WITH THE UNDERSTANDING THAT THEY WILL NOT BE DISCLOSED TO THIRD PARTIES WITHOUT WRITTEN CONSENT OF DIVERSIFIED WOODCRAFTS, INC. ANY REPRODUCTION IN PART OR WHOLE WITHOUT WRITTEN CONSENT IS SUBJECT TO LEGAL ACTION.

REV.	DESCRIPTION	DATE	NAME	ECN No.
D	B33 CABINET CHANGED TO B25 CABINET	4/3/2024	RJM	1466
A	CREATED DRAWING	11/4/21	EMR	N/A
REVISION LEVEL				

DRAWING NUMBER:	SCALE:	SHEET:	REVISION:
HFDL & HFDR SERIES	NTS	6 OF 14	REV D

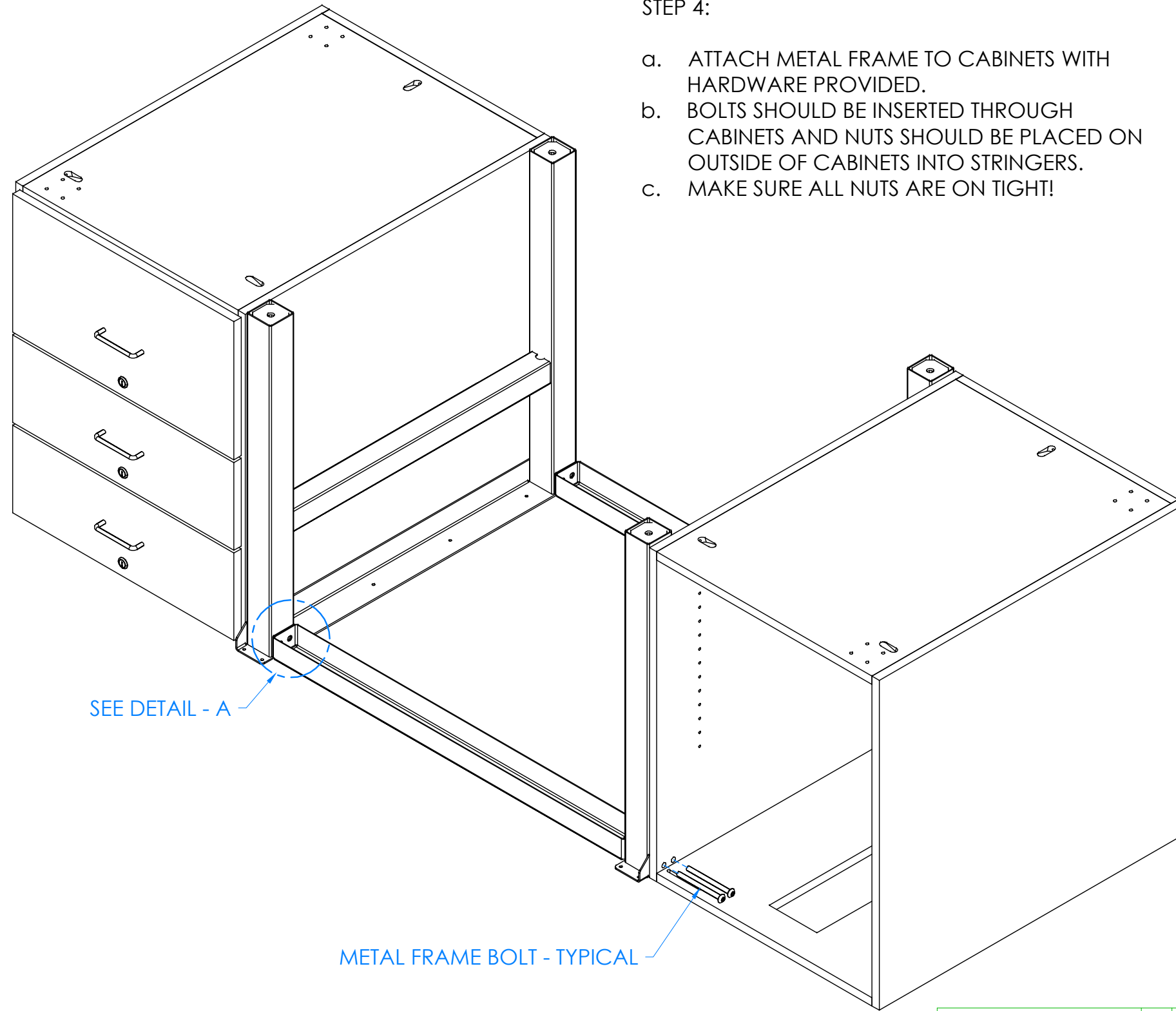


### HARDWARE REQUIRED FOR STEP

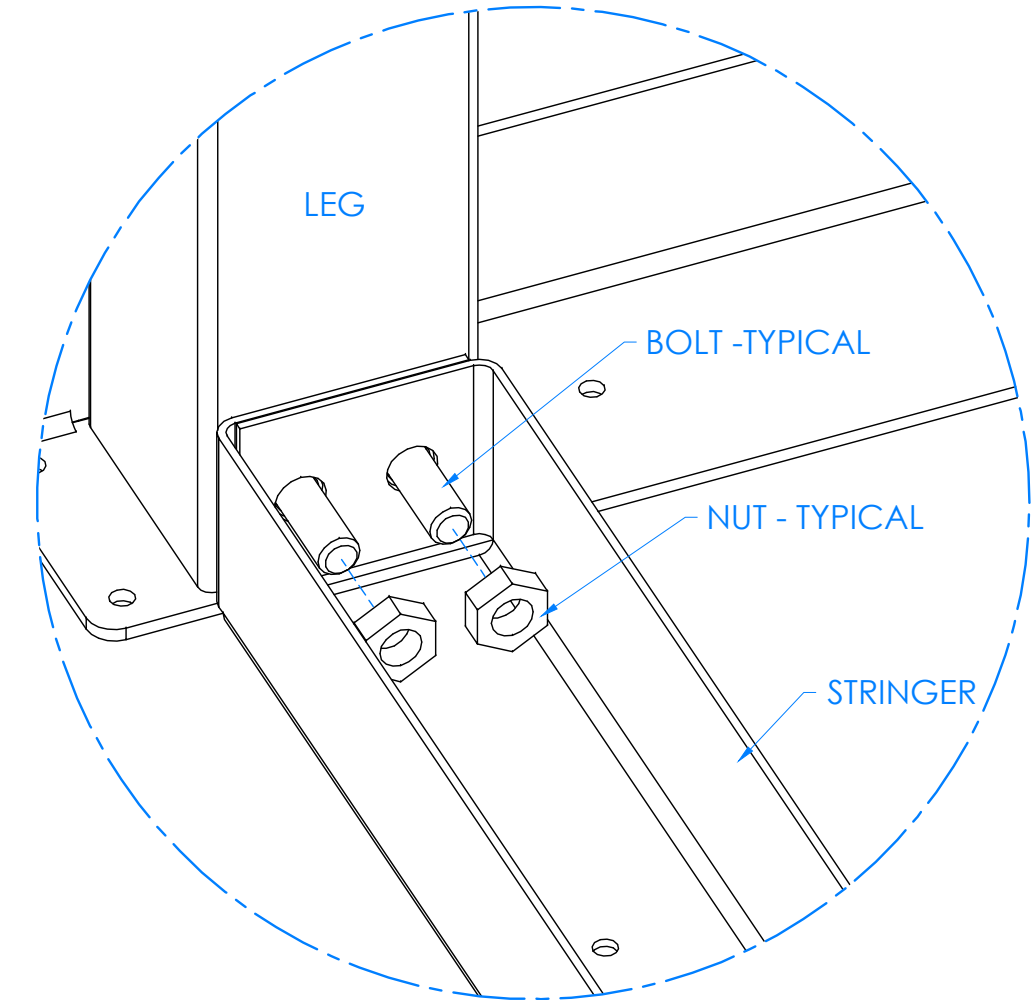
QTY	DESCRIPTION	PART NUMBER
8	METAL FRAME - BOLTS	256915
8	METAL FRAME - NUTS	255266

**STEP 4:**

- a. ATTACH METAL FRAME TO CABINETS WITH HARDWARE PROVIDED.
- b. BOLTS SHOULD BE INSERTED THROUGH CABINETS AND NUTS SHOULD BE PLACED ON OUTSIDE OF CABINETS INTO STRINGERS.
- c. MAKE SURE ALL NUTS ARE ON TIGHT!



**DETAIL-A**  
CLOSE OF UP METAL FRAME ASSEMBLY



SEE DETAIL - A

METAL FRAME BOLT - TYPICAL

**NOTE:**

DOOR AND HARDWARE REMOVED TO SHOW CLARITY

1.

ALL DIMENSIONS ARE IN INCHES UNLESS NOTED OTHERWISE	DWN BY:	EMR	DATE DWN:	11/4/21
DECIMALS: .X = ± .030	APR BY:		DATE APR:	
.XX = ± .020	APR BY:		DATE APR:	
.XXX = ± .010	APR BY:		DATE APR:	
ANGLES: = ± 1°				
CABINET SQUARENESS = ± .0625				



300 South Krueger Street  
Suring, WI 54174  
diversifiedwoodcrafts.com

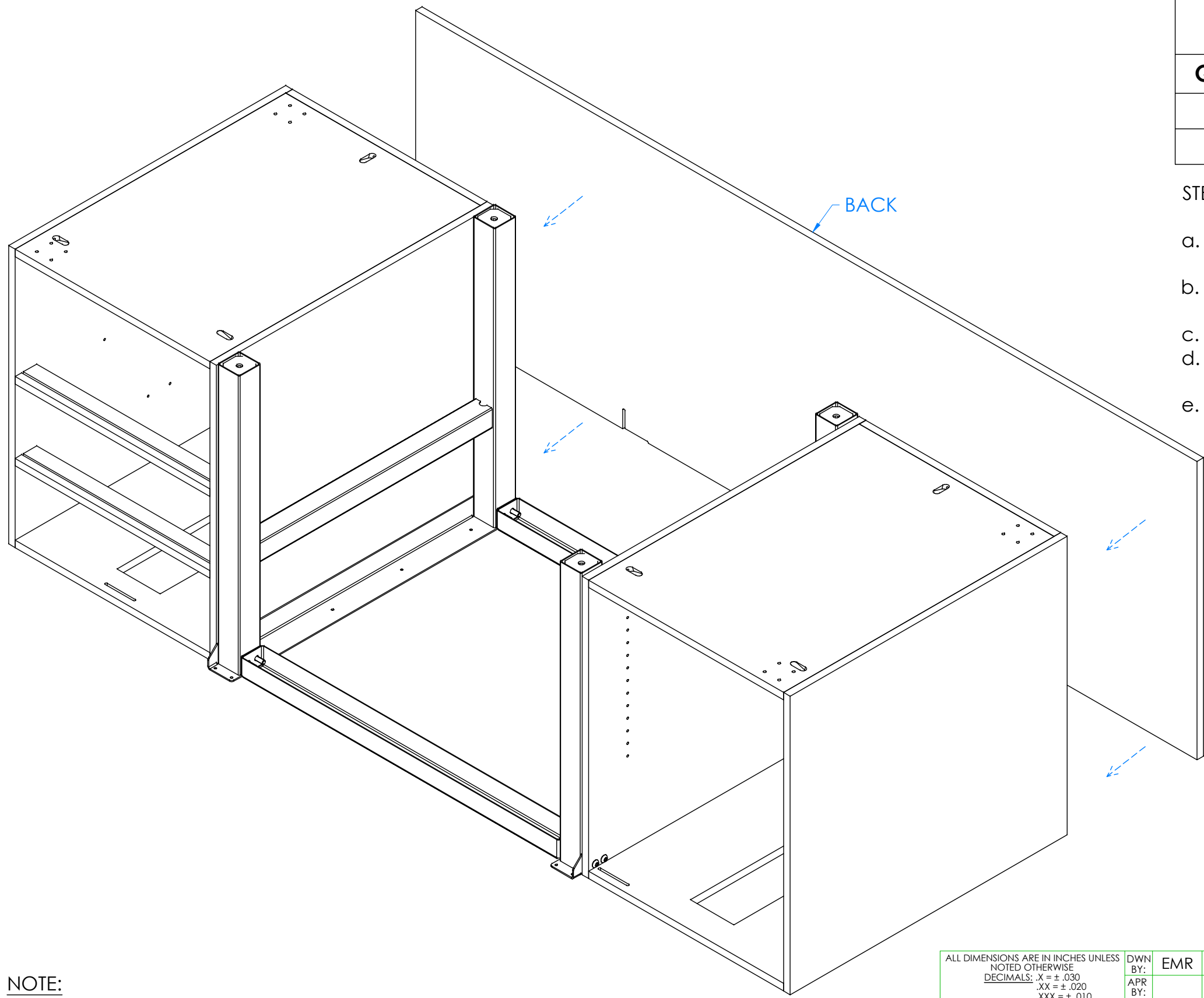
CONFIDENTIAL:  
ALL DESIGN RIGHTS RESERVED.  
THE INFORMATION, DATA, DESIGN, AND DRAWINGS EMBODIED IN THIS DOCUMENT AND ALL REPRODUCTIONS THEREOF ARE THE EXCLUSIVE PROPERTY OF DIVERSIFIED WOODCRAFTS, INC.

TITLE:  
**MOBILE DEMO WORKSTATION  
ASSEMBLY INSTRUCTIONS**

THESE DOCUMENTS ARE SUPPLIED WITH THE UNDERSTANDING THAT THEY WILL NOT BE DISCLOSED TO THIRD PARTIES WITHOUT WRITTEN CONSENT OF DIVERSIFIED WOODCRAFTS, INC. ANY REPRODUCTION IN PART OR WHOLE WITHOUT WRITTEN CONSENT IS SUBJECT TO LEGAL ACTION.

REV.	DESCRIPTION	DATE	NAME	ECN No.
D	B33 CABINET CHANGED TO B25 CABINET	4/3/2024	RJM	1466
A	CREATED DRAWING	11/4/21	EMR	N/A
REVISION LEVEL				

DRAWING NUMBER:	SCALE:	SHEET:	REVISION:
<b>HFDL &amp; HFDR SERIES</b>	NTS	7 OF 14	REV D

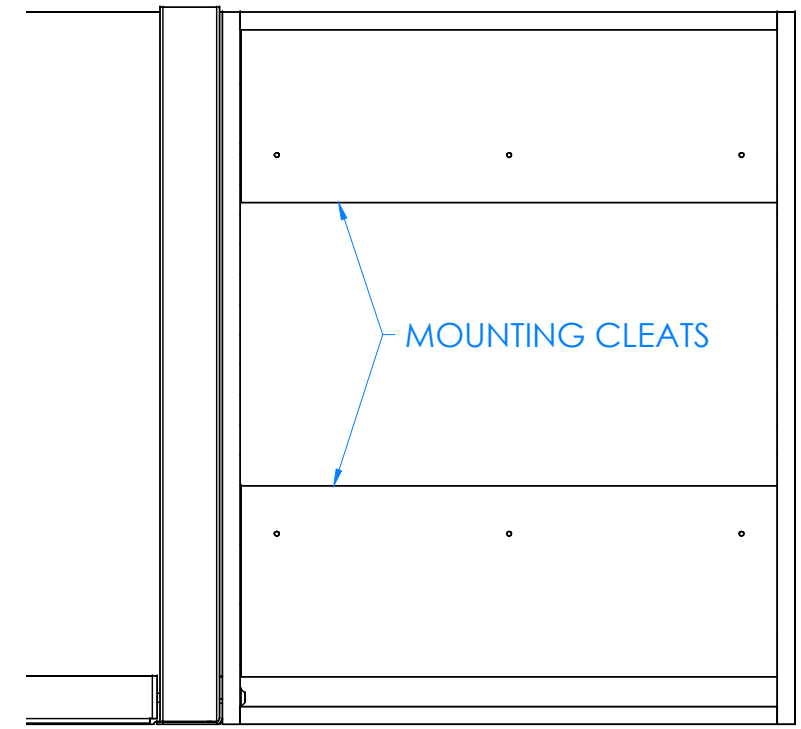


## HARDWARE REQUIRED FOR STEP

QTY	DESCRIPTION	PART NUMBER
1	BACK	N/A
12	SCREWS - BACK	100478

STEP 5:

- a. ATTACH BACK PANEL TO CABINETS WITH HARDWARE PROVIDED.
- b. SCREW THROUGH HOLES IN MOUNTING CLEATS LOCATED INSIDE OF BOTH CABINETS.
- c. PRE-DRILL HOLES IN BACK TO PREVENT CRACKING.
- d. NOTE: YOU WILL NEED TO REMOVE DRAWERS FROM DRAWER CABINET TO REACH MOUNTING CLEATS.
- e. MAKE SURE BACK PANEL IS FLUSH WITH OUTSIDE OF CABINETS!



INSIDE OF DOOR CABINET SHOWN  
DOOR AND HARDWARE REMOVED TO SHOW CLARITY

NOTE:

1.

ALL DIMENSIONS ARE IN INCHES UNLESS NOTED OTHERWISE DECIMALS: .X = ± .030 .XX = ± .020 .XXX = ± .010 ANGLES: = ± 1° CABINET SQUARENESS = ± .0625	DWN BY: EMR APR BY: APR BY:	DATE DWN: 11/4/21 DATE APR: DATE APR:
---	-----------------------------------	---

CONFIDENTIAL:  
ALL DESIGN RIGHTS RESERVED  
THE INFORMATION, DATA, DESIGN, AND DRAWINGS EMBODIED IN THIS DOCUMENT AND ALL REPRODUCTIONS THEREOF ARE THE EXCLUSIVE PROPERTY OF DIVERSIFIED WOODCRAFTS, INC.

THESE DOCUMENTS ARE SUPPLIED WITH THE UNDERSTANDING THAT THEY WILL NOT BE DISCLOSED TO THIRD PARTIES WITHOUT WRITTEN CONSENT OF DIVERSIFIED WOODCRAFTS, INC. ANY REPRODUCTION IN PART OR WHOLE WITHOUT WRITTEN CONSENT IS SUBJECT TO LEGAL ACTION.



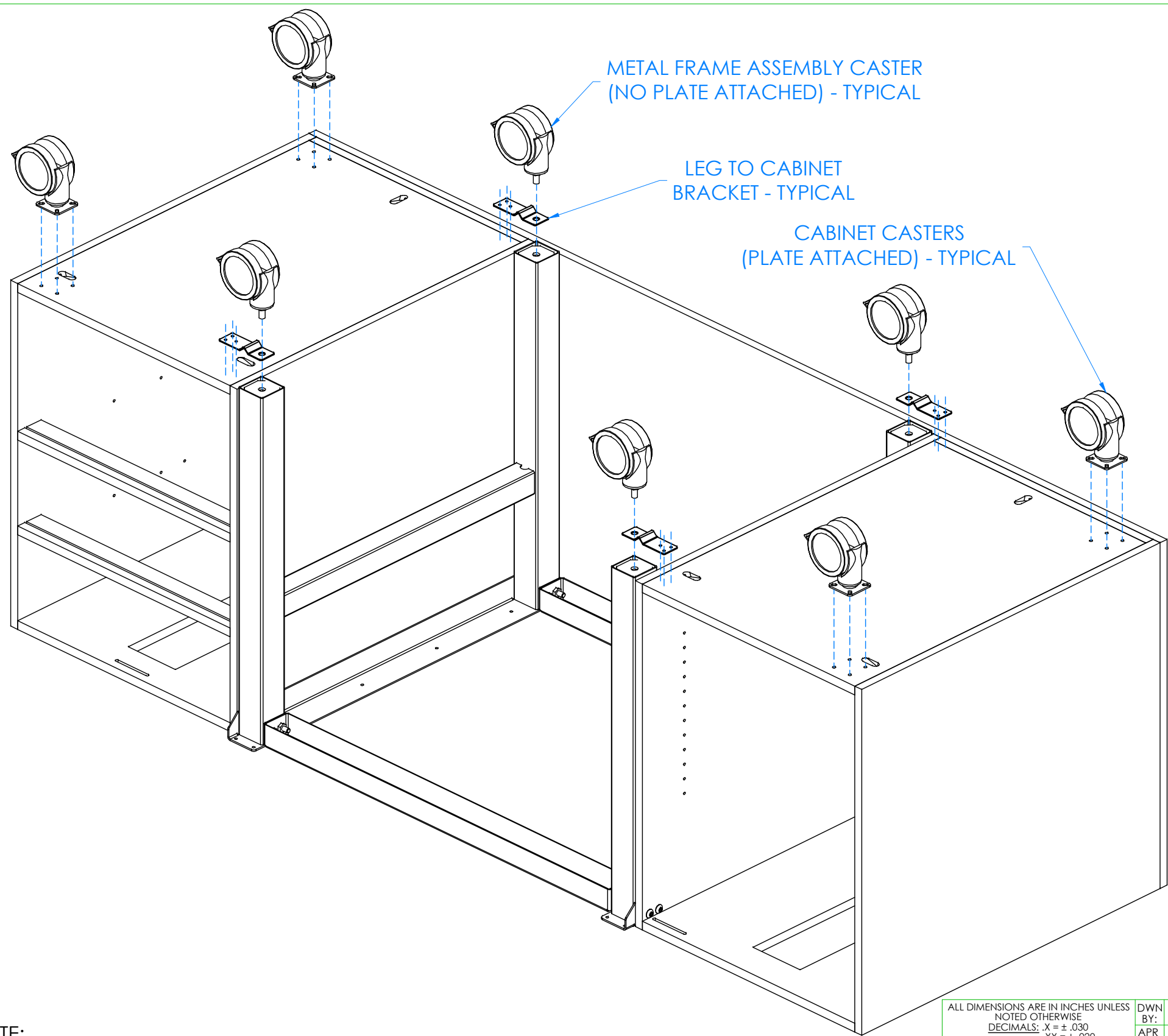
300 South Krueger Street  
Suring, WI 54174  
diversifiedwoodcrafts.com

TITLE:  
MOBILE DEMO WORKSTATION  
ASSEMBLY INSTRUCTIONS

REV.	DESCRIPTION	DATE	NAME	ECN No.
D	B33 CABINET CHANGED TO B25 CABINET	4/3/2024	RJM	1466
A	CREATED DRAWING	11/4/21	EMR	N/A
REVISION LEVEL				

DRAWING NUMBER: <b>HFDL &amp; HFDR SERIES</b>	SCALE: NTS	SHEET: 8 OF 14	REVISION: REV D
--	---------------	-------------------	--------------------





### HARDWARE REQUIRED FOR STEP

QTY	DESCRIPTION	PART NUMBER
4	CASTERS - LEGS	255813
4	CASTERS - CABINETS	256909
1	CASTER HARDWARE	256912
4	LEG TO CABINET BRACKET	258380
12	SCREW - LEG TO CABINET BRACKET	100111

STEP 6:

- a. ATTACH CASTERS TO BOTTOM OF WORKSTATION.
- b. PLATE CASTERS TO BE INSTALLED ON CABINETS.
- c. STEM CASTERS TO BE INSTALLED ON LEG ASSEMBLIES WITH LEG TO CABINET BRACKET INSTALLED IN BETWEEN.
- d. PRE DRILL HOLES USING A 1/8" DRILL BIT AND USE PROVIDED SCREWS TO FASTEN LEG TO CABINET BRACKETS TO THE CABINETS.
- e. MAKE SURE STEM CASTERS AND PLATE CASTER HARDWARE ARE THREADED ALL THE WAY AND FULLY TIGHTENED.
- f. CASTERS ARE NOT TO BE USED TO LEVEL WORKSTATION!

NOTE:

1.

ALL DIMENSIONS ARE IN INCHES UNLESS NOTED OTHERWISE DECIMALS: .X = ± .030 .XX = ± .020 .XXX = ± .010 ANGLES: = ± 1° CABINET SQUARENESS = ± .0625	DWN BY: EMR APR BY: APR BY:	DATE DWN: 11/4/21 DATE APR: DATE APR:
---	-----------------------------------	---

CONFIDENTIAL:  
ALL DESIGN RIGHTS RESERVED  
THE INFORMATION, DATA, DESIGN, AND DRAWINGS EMBODIED IN THIS DOCUMENT AND ALL REPRODUCTIONS THEREOF ARE THE EXCLUSIVE PROPERTY OF DIVERSIFIED WOODCRAFTS, INC.

THESE DOCUMENTS ARE SUPPLIED WITH THE UNDERSTANDING THAT THEY WILL NOT BE DISCLOSED TO THIRD PARTIES WITHOUT WRITTEN CONSENT OF DIVERSIFIED WOODCRAFTS, INC. ANY REPRODUCTION IN PART OR WHOLE WITHOUT WRITTEN CONSENT IS SUBJECT TO LEGAL ACTION.

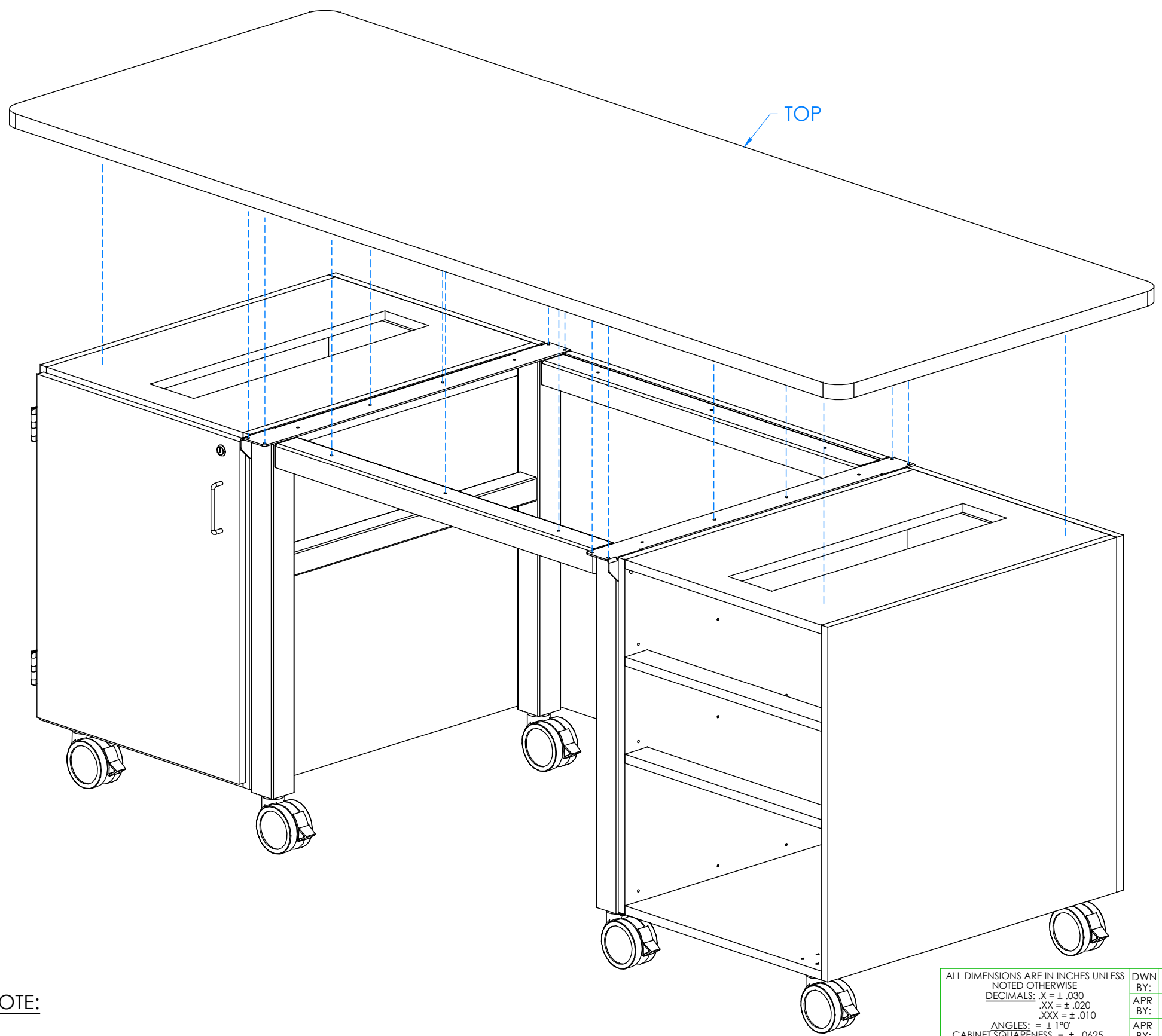


300 South Krueger Street  
Suring, WI 54174  
diversifiedwoodcrafts.com

TITLE:  
**MOBILE DEMO WORKSTATION  
ASSEMBLY INSTRUCTIONS**

REV.	DESCRIPTION	DATE	NAME	ECN No.
D	B33 CABINET CHANGED TO B25 CABINET	4/3/2024	RJM	1466
A	CREATED DRAWING	11/4/21	EMR	N/A
REVISION LEVEL				

DRAWING NUMBER: <b>HFDL &amp; HFDR SERIES</b>	SCALE: NTS	SHEET: 9 OF 14	REVISION: REV D
--	---------------	-------------------	--------------------



## HARDWARE REQUIRED FOR STEP

QTY	DESCRIPTION	PART NUMBER
1	TOP	VARIES
24	SCREW - TOP	100369

STEP 7:

- a. IF YOUR UNIT HAS AN EPOXY OR PHENOLIC TOP, SKIP TO STEP 8.
- b. WITH HELP FROM MULTIPLE PEOPLE, FLIP WORKSTATION UP SO IT IS UPRIGHT ON THE CASTERS.
- c. PLACE TOP ONTO WORKSTATION WITH PROPER OVERHANG (CENTERED ON TABLE).
- d. ATTACH TOP TO CABINETS AND METAL FRAME ASSEMBLY WITH HARDWARE PROVIDED.
- e. SCREW THROUGH INSIDE OF CABINETS AND HOLES LOCATED ON METAL FRAME ASSEMBLY.
- f. PRE-DRILL HOLES IN TOP TO PREVENT CRACKING.
- g. MAKE SURE SCREWS ARE TIGHT AND TOP IS SECURE.
- h. SPACE SCREWS ACCORDINGLY PER QUANTITY SUPPLIED!

NOTE:

1.

ALL DIMENSIONS ARE IN INCHES UNLESS NOTED OTHERWISE DECIMALS: .X = ± .030 .XX = ± .020 .XXX = ± .010 ANGLES: = ± 1° CABINET SQUARENESS = ± .0625	DWN BY: EMR APR BY: APR BY:	DATE DWN: 11/4/21 DATE APR: DATE APR:
---	-----------------------------------	---



300 South Krueger Street  
Suring, WI 54174  
diversifiedwoodcrafts.com

CONFIDENTIAL:  
ALL DESIGN RIGHTS RESERVED.  
THE INFORMATION, DATA, DESIGN, AND DRAWINGS EMBODIED IN THIS DOCUMENT AND ALL REPRODUCTIONS THEREOF ARE THE EXCLUSIVE PROPERTY OF DIVERSIFIED WOODCRAFTS, INC.

TITLE:  
MOBILE DEMO WORKSTATION  
ASSEMBLY INSTRUCTIONS

THESE DOCUMENTS ARE SUPPLIED WITH THE UNDERSTANDING THAT THEY WILL NOT BE DISCLOSED TO THIRD PARTIES WITHOUT WRITTEN CONSENT OF DIVERSIFIED WOODCRAFTS, INC. ANY REPRODUCTION IN PART OR WHOLE WITHOUT WRITTEN CONSENT IS SUBJECT TO LEGAL ACTION.

REV.	DESCRIPTION	DATE	NAME	ECN No.
D	B33 CABINET CHANGED TO B25 CABINET	4/3/2024	RJM	1466
A	CREATED DRAWING	11/4/21	EMR	N/A
REVISION LEVEL				

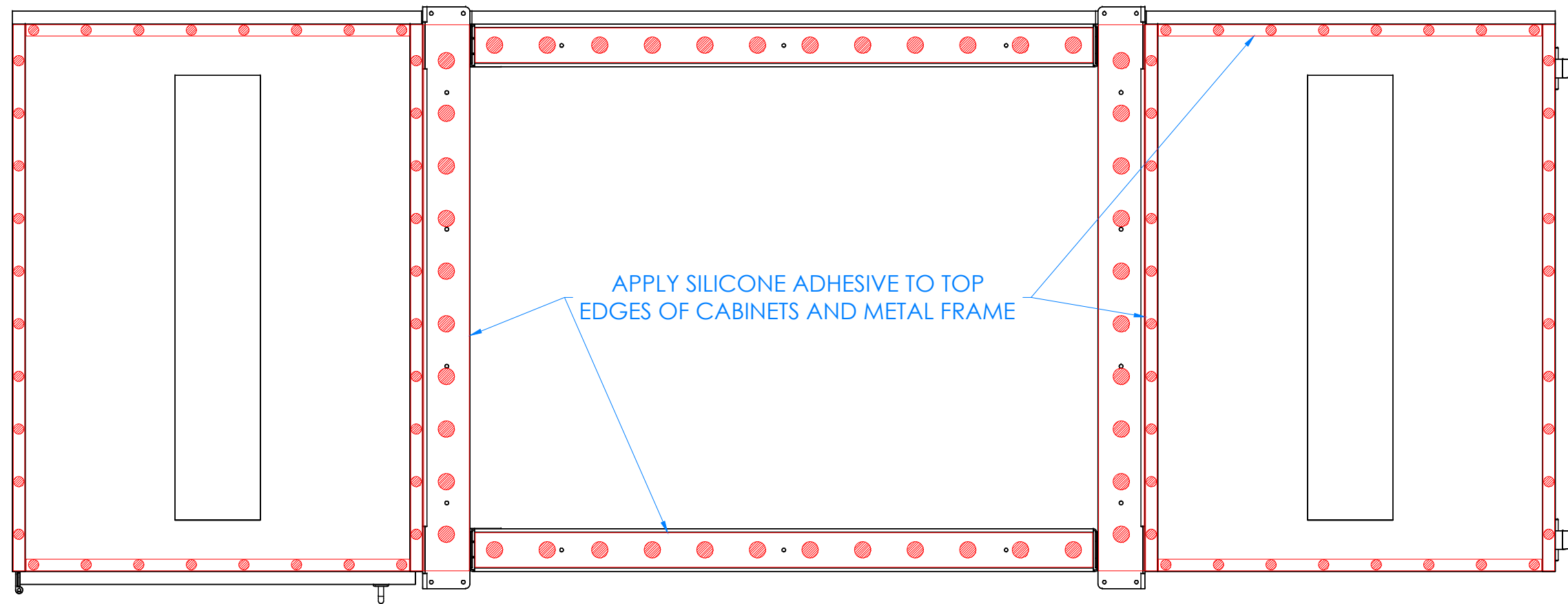
DRAWING NUMBER:	SCALE:	SHEET:	REVISION:
HFDL & HFDR SERIES	NTS	10 OF 14	REV D

STEP 8:

- a. IF YOUR UNIT DOES NOT HAVE AN EPOXY OR PHENOLIC TOP, SKIP TO STEP 9.
- b. WITH HELP FROM MULTIPLE PEOPLE, FLIP WORKSTATION UP SO IT IS UPRIGHT ON THE CASTERS.
- c. APPLY SILICONE ADHESIVE TO TOP EDGES OF CABINET AND METAL FRAME.
- d. APPLY SILICONE ADHESIVE IN DOT PATTERN LIKE SHOWN BELOW FOR BEST RESULTS.
- e. PLACE TOP ON WORKSTATION WITH PROPER OVERHANG (CENTERED ON WORKSTATION).
- f. CLAMP ON TOP TO CABINETS AND METAL FRAME TO REMOVE ANY WARP USING SHIMS AND C-CLAMPS, IF NEEDED, WHEN ALIGNING THE TOP (DO THIS BEFORE ADHESIVE SETS UP).
- g. LET CURE FOR 6-12 HOURS.

### HARDWARE REQUIRED FOR STEP

QTY	DESCRIPTION	PART NUMBER
1	TOP	VARIES
4	SILICONE	100711



TOP VIEW OF WORKSTATION SHOWN

NOTE:

1.

ALL DIMENSIONS ARE IN INCHES UNLESS NOTED OTHERWISE DECIMALS: .X = ± .030 .XX = ± .020 .XXX = ± .010 ANGLES: = ± 1° CABINET SQUARENESS = ± .0625	DWN BY:	EMR	DATE DWN:	11/4/21
	APR BY:		DATE APR:	
	APR BY:		DATE APR:	
	APR BY:		DATE APR:	



300 South Krueger Street  
 Suring, WI 54174  
 diversifiedwoodcrafts.com

CONFIDENTIAL:  
 ALL DESIGN RIGHTS RESERVED.  
 THE INFORMATION, DATA, DESIGN, AND DRAWINGS EMBODIED IN THIS DOCUMENT AND ALL REPRODUCTIONS THEREOF ARE THE EXCLUSIVE PROPERTY OF DIVERSIFIED WOODCRAFTS, INC.

TITLE:  
**MOBILE DEMO WORKSTATION  
 ASSEMBLY INSTRUCTIONS**

THESE DOCUMENTS ARE SUPPLIED WITH THE UNDERSTANDING THAT THEY WILL NOT BE DISCLOSED TO THIRD PARTIES WITHOUT WRITTEN CONSENT OF DIVERSIFIED WOODCRAFTS, INC. ANY REPRODUCTION IN PART OR WHOLE WITHOUT WRITTEN CONSENT IS SUBJECT TO LEGAL ACTION.

DRAWING NUMBER:	SCALE:	SHEET:	REVISION:
<b>HFDL &amp; HFDR SERIES</b>	NTS	11 OF 14	REV D

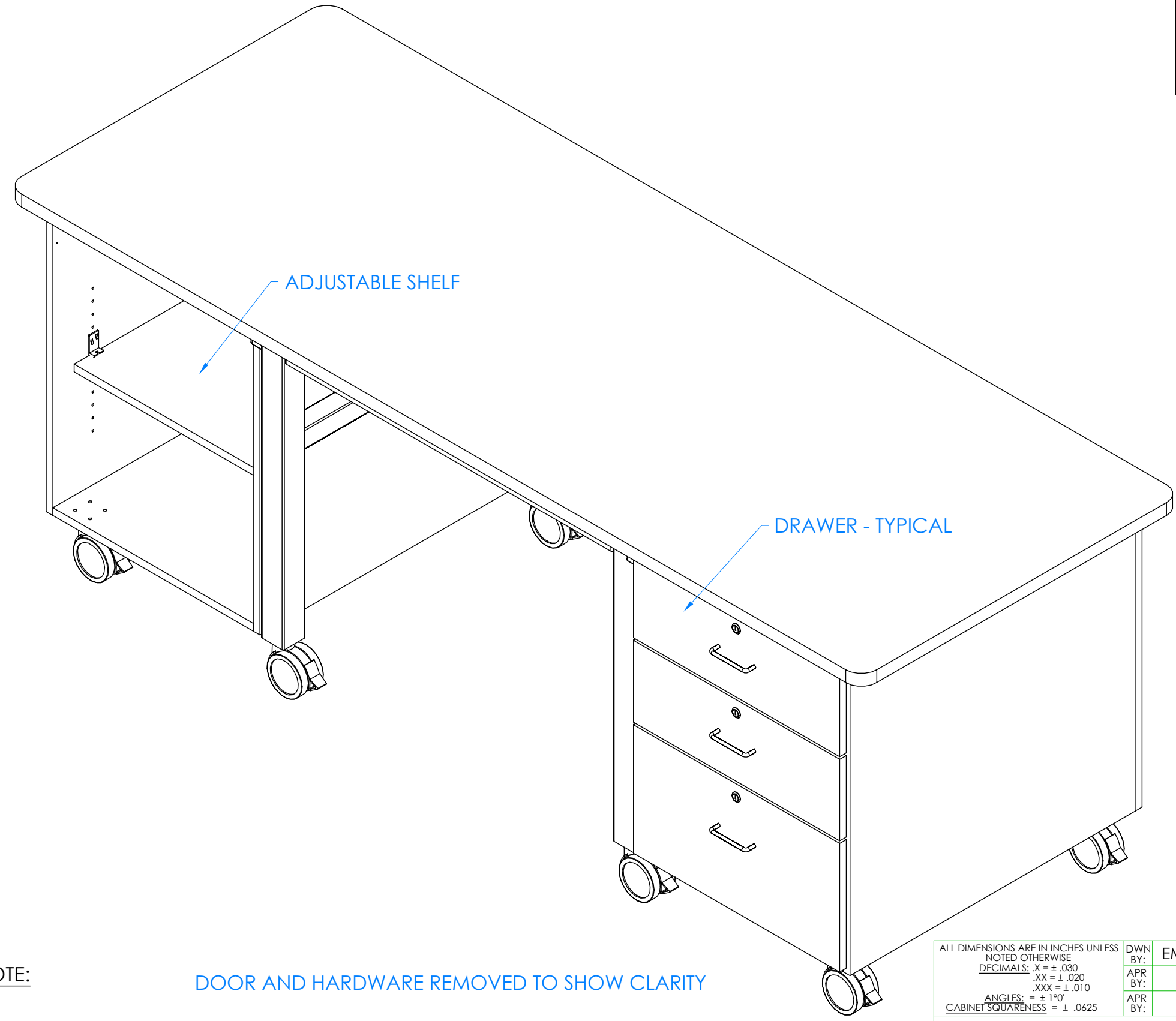
REV.	DESCRIPTION	DATE	NAME	ECN No.
D	B33 CABINET CHANGED TO B25 CABINET	4/3/2024	RJM	1466
A	CREATED DRAWING	11/4/21	EMR	N/A
REVISION LEVEL				

## HARDWARE REQUIRED FOR STEP

QTY	DESCRIPTION	PART NUMBER
4	SHELF CLIPS	100027

STEP 9:

- a. INSERT SHELF CLIPS IN DESIRED LOCATION.
- b. PLACE SHELF ON CLIPS, MAKING SURE IT IS LEVEL.
- c. PLACE DRAWERS BACK INTO CABINET.



NOTE:

DOOR AND HARDWARE REMOVED TO SHOW CLARITY

1.

ALL DIMENSIONS ARE IN INCHES UNLESS NOTED OTHERWISE DECIMALS: .X = ± .030 .XX = ± .020 .XXX = ± .010 ANGLES: = ± 1° CABINET SQUARENESS = ± .0625	DWN BY: EMR APR BY: APR BY:	DATE DWN: 11/4/21 DATE APR: DATE APR:
---	-----------------------------------	---

CONFIDENTIAL:  
ALL DESIGN RIGHTS RESERVED  
THE INFORMATION, DATA, DESIGN, AND DRAWINGS EMBODIED IN THIS DOCUMENT AND ALL REPRODUCTIONS THEREOF ARE THE EXCLUSIVE PROPERTY OF DIVERSIFIED WOODCRAFTS, INC.

THESE DOCUMENTS ARE SUPPLIED WITH THE UNDERSTANDING THAT THEY WILL NOT BE DISCLOSED TO THIRD PARTIES WITHOUT WRITTEN CONSENT OF DIVERSIFIED WOODCRAFTS, INC. ANY REPRODUCTION IN PART OR WHOLE WITHOUT WRITTEN CONSENT IS SUBJECT TO LEGAL ACTION.

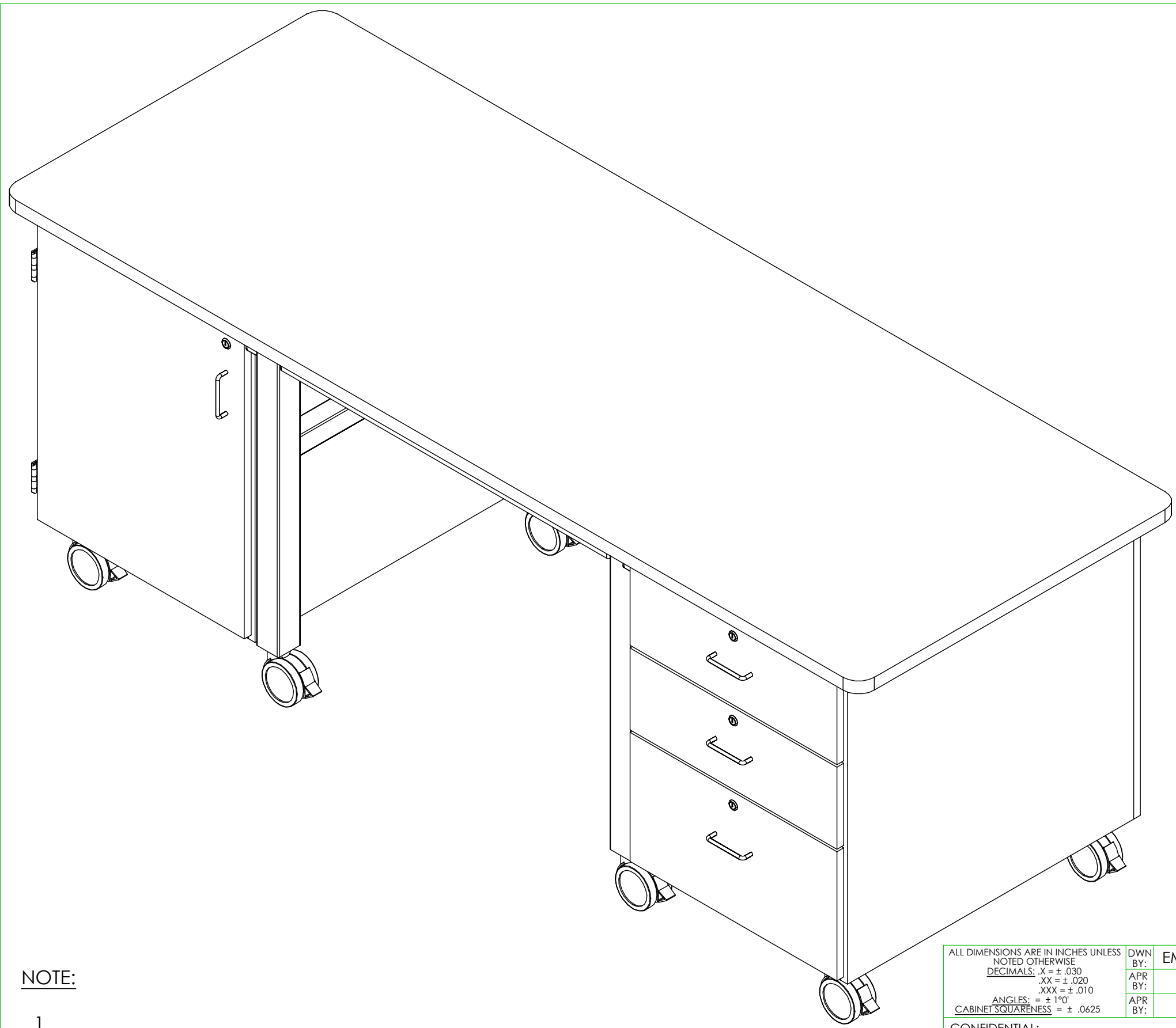


300 South Krueger Street  
Suring, WI 54174  
diversifiedwoodcrafts.com

TITLE:  
MOBILE DEMO WORKSTATION  
ASSEMBLY INSTRUCTIONS

REV.	DESCRIPTION	DATE	NAME	ECN No.
D	B33 CABINET CHANGED TO B25 CABINET	4/3/2024	RJM	1466
A	CREATED DRAWING	11/4/21	EMR	N/A
REVISION LEVEL				

DRAWING NUMBER: <b>HFDL &amp; HFDR SERIES</b>	SCALE: NTS	SHEET: 12 OF 14	REVISION: REV D
--	---------------	--------------------	--------------------



STEP 10:

- a. SET WORKSTATION IN DESIRED LOCATION.

NOTE:

- 1.

COMPLETE UNIT SHOWN

REV.	DESCRIPTION	DATE	NAME	ECN No.
D	B33 CABINET CHANGED TO B25 CABINET	4/3/2024	RJM	1466
A	CREATED DRAWING	11/4/21	EMR	N/A
REVISION LEVEL				

ALL DIMENSIONS ARE IN INCHES UNLESS NOTED OTHERWISE DECIMALS: .X = ± .030 .XX = ± .020 .XXX = ± .010 ANGLES: = ± 1° CABINET SQUARENESS = ± .0625	DWN BY: EMR APR BY: APR BY:	DATE DWN: 11/4/21 DATE APR: DATE APR:
---	-----------------------------------	---

CONFIDENTIAL:  
ALL DESIGN RIGHTS RESERVED  
THE INFORMATION, DATA, DESIGN, AND DRAWINGS EMBODIED IN THIS DOCUMENT AND ALL REPRODUCTIONS THEREOF ARE THE EXCLUSIVE PROPERTY OF DIVERSIFIED WOODCRAFTS, INC.

THESE DOCUMENTS ARE SUPPLIED WITH THE UNDERSTANDING THAT THEY WILL NOT BE DISCLOSED TO THIRD PARTIES WITHOUT WRITTEN CONSENT OF DIVERSIFIED WOODCRAFTS, INC. ANY REPRODUCTION IN PART OR WHOLE WITHOUT WRITTEN CONSENT IS SUBJECT TO LEGAL ACTION.



300 South Krueger Street  
Suring, WI 54174  
diversifiedwoodcrafts.com

TITLE:  
MOBILE DEMO WORKSTATION  
ASSEMBLY INSTRUCTIONS

DRAWING NUMBER: <b>HFDL &amp; HFDR SERIES</b>	SCALE: NTS	SHEET: 13 OF 14	REVISION: REV D
--	---------------	--------------------	--------------------



PRODUCT

# Butcher Block (Varnished Tops) *Maintenance & Repair*

## SPILLS

- Be sure any spills are cleaned up immediately. Excessive moisture and certain chemicals allowed to stand on a finished surface can cause damage.
- Clean spills or soiled areas with a damp cloth and dry thoroughly.
- Periodically, apply a coat of spray wax, paste wax, or lemon oil to finished surface. This will enhance and protect the finish and insure a moisture barrier is intact in the event the finish becomes scratched or worn.

## SCRATCHES & DENTS

- Minor scratches and dents can be easily repaired by rubbing the affected area with steel wool or fine grit (#220) sandpaper. Remember, when rubbing or sanding always sand with the grain of the wood. Feather edges of repair in to the surrounding area. Remove all dust and residue and apply a coat of clear lacquer type finish or paint. Clear lacquer type finish can be purchased at most paint or hardware stores. Small cans of touch-up paint are available from your dealer or representative. Paint colors can easily be matched at most paint stores. Confine touch-up only to the area that was sanded. Remember, follow manufacturing directions on product label when refinishing.
- Major scratches and gouges where large portions of wood have been removed or damaged should be handled by a professional experienced in furniture repair with the proper tools and equipment.

## MINERAL STREAKS

- Mineral Streaks—Natural Coloring of wood due to mineral deposits in the tree. Repair is not required and will add to the individuality of your table. Sizes can range up to a 1/4" wide and up to 3" in length.

## HUMIDITY GUIDELINES

Your Butcher Block was kiln-dried to an initial moisture content of 7.6%. In order to maintain the beauty and integrity of your Butcher Block, it is recommended that special care be taken to keep the relative humidity and temperature within your home or warehouse in the highlighted range. This will limit the amount of expansion and contraction in your natural wood product and minimize the risk of environmental damage.

- **Environment Acclimation:** Environmental damage does not constitute defective product. Allowing your Butcher Block to acclimate to the environment for at least 72 hours prior to installation, following recommended installation practices that allow your Butcher Block to move with the conditions and controlling the environment itself are all key factors that determine the life of your product.
- **Temperature Changes:** It is important to note that as winter temperatures drop, so does relative humidity in the air. The heaters come on which further dries the air. Keeping the area humidified to an acceptable level usually becomes necessary during the winter months. The opposite is true in spring and summer as humidity rises, dehumidifiers and air conditioners become the method of control.

		RELATIVE HUMIDITY %																	
		5	10	15	20	25	30	35	40	45	50	55	60	65	70	75	80	85	90
TEMPERATURE (°F)	30	1.4	2.6	3.7	4.6	5.5	6.3	7.1	7.8	8.7	9.5	10.4	11.3	12.4	13.5	14.9	17	18.5	21
	40	1.4	2.6	3.7	4.6	5.5	6.3	7.1	7.8	8.7	9.5	10.4	11.3	12.4	13.5	14.9	17	18.5	21
	50	1.4	2.6	3.6	4.6	5.5	6.3	7.1	7.9	8.7	9.5	10.3	11.2	12.3	13.4	14.8	16	18.4	20.9
	60	1.3	2.5	3.6	4.6	5.4	6.2	7	7.8	8.6	9.4	10.2	11.1	12.1	13.3	14.6	16	18.2	20.7
	70	1.3	2.5	3.5	4.5	5.4	6.2	6.9	7.7	8.5	9.2	10.1	11	12	13.1	14.4	16	17.9	20.5
	80	1.3	2.4	3.5	4.4	5.3	6.1	6.8	7.6	8.3	9.1	9.9	10.8	11.7	12.9	14.2	16	17.7	20.2
	90	1.2	2.3	3.4	4.3	5.1	5.9	6.7	7.4	8.1	8.9	9.7	10.5	11.85	12.6	13.9	15	17.3	19.8
100	1.2	2.3	3.3	4.2	5	5.8	6.5	7.2	7.9	8.7	9.5	10.3	11.2	12.3	13.6	15	17	19.5	

*Example: If conditions in a warehouse are 60% relative humidity at 50 degrees Fahrenheit Dry wood will pick up moisture until 11.2% is reached, regardless of wood species and initial moisture content.*