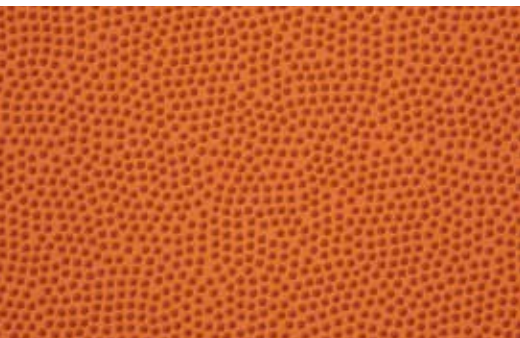
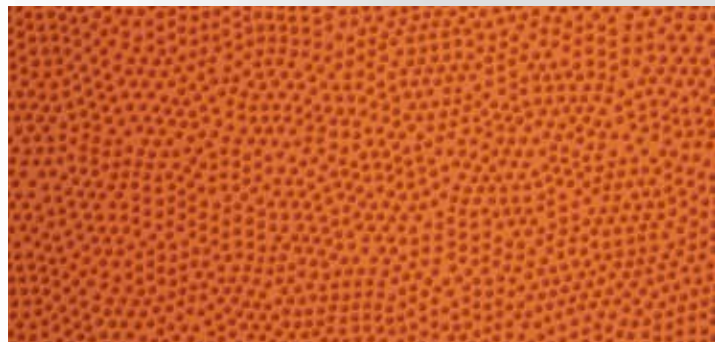


douglas® // **HOOPS**

REIMAGINE HOW YOU PLAY THE GAME OF BASKETBALL





 **-PRO™** **ADJUSTABLE
SERIES**



645 MAX

42" x 60"
CLEARVIEW
BACKBOARD
(item # 69660)

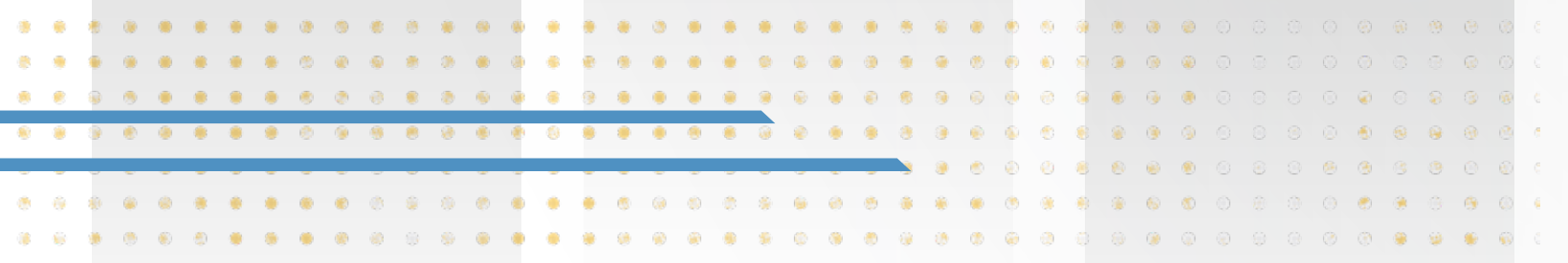
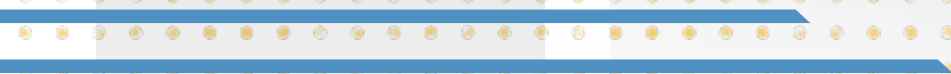
646 MAX

42" x 72"
CLEARVIEW
BACKBOARD
(item # 69672)



645 STEEL

42" x 60"
STEEL
BACKBOARD
(item # 69665)





MAX CLEAR VIEW BACKBOARD

Our durable, unobstructed, NBA regulation size "clear view" tempered glass backboard has an aluminum perimeter frame supported by a welded steel back frame. This combination allows for a very rigid playing experience and maximum ball response. Unlike traditional "H Frame" backboard supports, the reinforced galvanized steel extension arms attach directly to the perimeter frame, allowing for the preferred, professional "clear view" appearance. Our tempered glass board is a full 1/2" thick which is the same used at all competitive levels such as the NBA and NCAA. Plus, we've pre-installed black, one-inch thick molded vinyl backboard padding to give you the best playing experience. Ever.



PRESSURE BREAKAWAY GOAL

The stress of heavy, unsupervised play and repetitive dunks are no match for Douglas® D-Pro™ MAX Basketball Systems' durability and performance. Constructed of robust steel with a CSPC compliant powder-coat finish and featuring a 5/8" thick, 18" steel rim, and a double spring pressure flex breakaway mechanism, our recreational breakaway goal attaches to the MAX clear view backboard with a double reinforced steel backplate. Featuring unique hidden net attachment style hooks along the inside of the hoop, our pressure breakaway goal will withstand the weight of even the most aggressive slam dunks from family members of all ages. You better believe it.



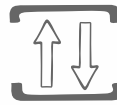
REINFORCED EXTENSION ARMS

A corrosion-resistant, 1-9/16" x 3-1/8" top reinforced extension arm and lower 2" x 4" reinforced extension arm attach to the outer perimeter and the base of the backboard frame allowing for the preferred clear view style. Overhanging the regulation 4', our Douglas® D-Pro™ MAX Basketball Systems provide increased stability and strength and ample room for lay-ups and fast paced game play.



GALVANIZED STEEL POLE

Constructed from 6" square galvanized steel with a 3/16" wall thickness, the Douglas® D-Pro™ MAX Basketball System is built to handle rugged play in the toughest conditions. Through decades of design and testing, we have manufactured our one-piece construction galvanized steel pole, equipped with double welded base gussets, with the optimal specifications to minimize shake and vibration. Every steel pole is finished in an attractive black acrylic powder coat to prevent chipping, rusting and corrosion in virtually any environment from coast to coast. For increased aesthetic appeal and to keep our players safe and free from injury, we have included a durable 2" thick fitted pole and base pad with every Douglas® D-Pro™ MAX Basketball System. Rest assured, your MVPs are protected.



STRESS FREE HEIGHT ADJUSTMENT

Gamers of any age and any size can dunk for days on their very own Douglas® D-Pro™ MAX Basketball System. Effortlessly adjust the goals' height anywhere from 5-1/2' to 10' with two lift-assist, pre-assembled cylinders. The lift-assist ingenuity counterbalances the weight of the backboard so even a small child can raise and lower the goal. The smooth operating adjustable height crank assembly has an easy-to-read gauge allowing you to effortlessly raise and lower in mere seconds. The stainless steel handle is removable to prevent unwanted tampering.



EASIEST INSTALLATION PROCESS

A robust anchor system allows for easy and accurate leveling during installation. All systems are set in a structurally sound 4' deep concrete footing providing a safe and steady base you can trust. Not only are our bolts and base completely covered for player safety, our J-bolt anchor system permits you to dismount your basketball system and move to a new location - all you will have to do is install a new anchor system at the new location. Easy. As. Pie.



PROTECTIVE PADDING

Form fitted pole and base padding are manufactured with durable black all-weather vinyl that is UV and all weather resistant. Dense foam padding is 2" thick for maximum impact protection. Padding secures in the back with sewn-in overlapping velcro straps. Sleek, molded vinyl backboard padding offers maximum player protection while not interfering with game play. Backboard padding is pre-installed for your convenience.



ALL WEATHER PROTECTION

Blazing summers, drizzly springs, and icy winters are no match for the ultimate weather protection of our Douglas® D-Pro™ MAX Basketball System. Our team immerses our steel in a bath of molten zinc to produce a corrosion resistant, multi-layered coating of zinc-iron alloy and zinc metal, preventing rusting and chipping, while providing ultimate weather protection against the elements. All of the fastening hardware is made from stainless steel to ensure your system maintains its structural integrity. Plus, all protective padding is completely weather treated and UV resistant. Rest assured, your system will be protected against the elements, long after the buzzer goes off. We've got you covered.

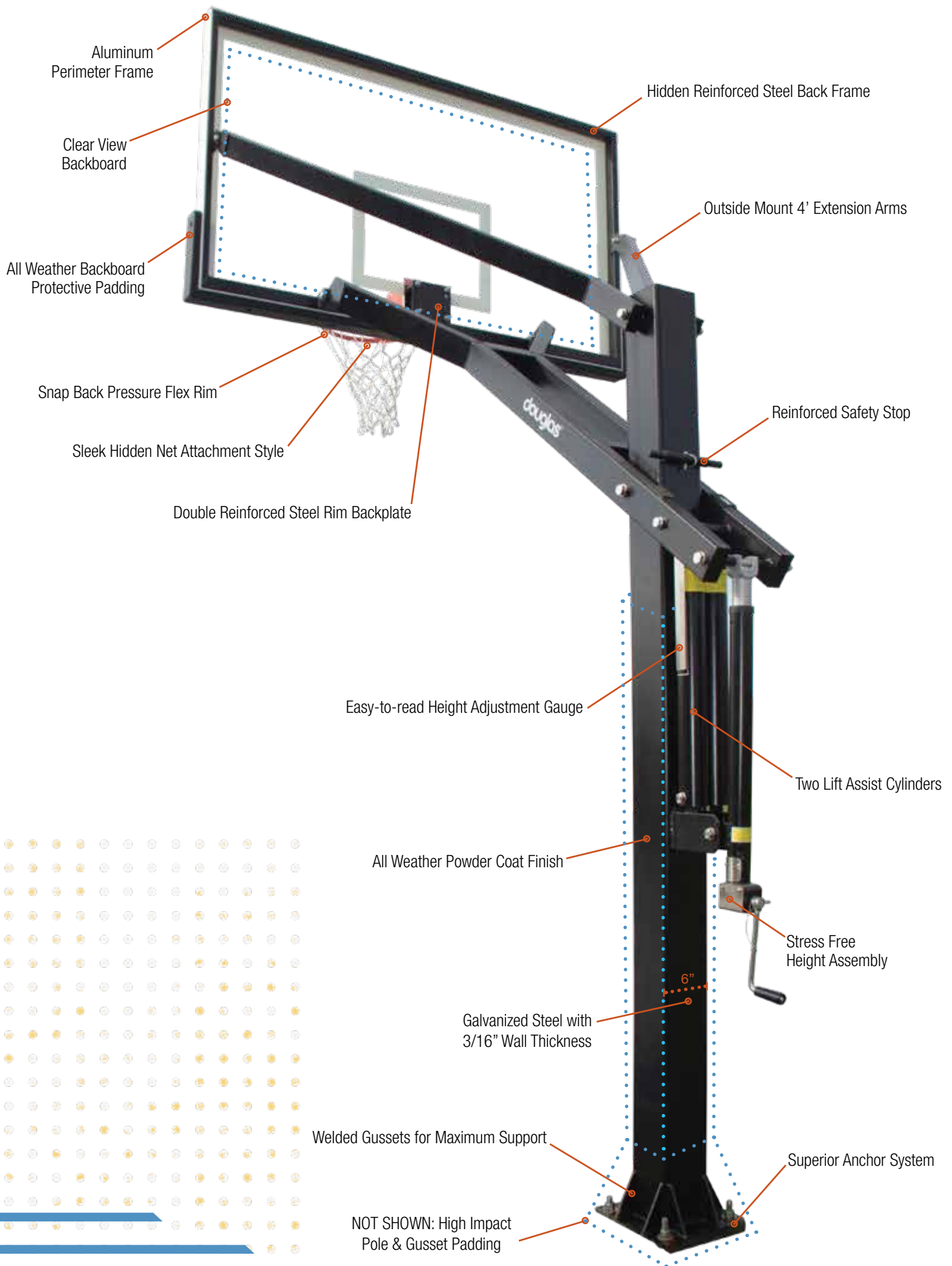


LIFETIME LIMITED WARRANTY

With over five decades of experience manufacturing elite sports equipment and great customer service to help you identify and solve problems, we stand behind our systems and guarantee a lifetime of dunks for our MVPs. Replacement parts are always readily available, so you never have to miss a minute of playtime. We've got your back and we're here to stay.



STEEL BACKBOARD Durable 42"x 60" rectangular steel backboard has a 12 gauge steel shell with a white powder coat finish and an orange printed target and border. Board has an integral reinforced steel channel on reverse side for mounting and increased board support.



F//5™ **FIXED SERIES**

The Douglas® F5™ Basketball Systems were designed with safety in mind and is the best in its class for ultimate durability and play. The system boasts the high quality features of the adjustable series in a fixed version making it an ideal choice for institutional applications such as neighborhood parks, municipalities, school playgrounds and anywhere else an adjustable system is not desired or needed.

5' FIXED EXTENSION ARM

The Douglas® F5™ fixed extension arm overhangs 5' providing stability, strength and extra room for lay-ups and fast competitive play. The unique extension mount is angled and completely out of the play area minimizing any potential contact with the extension mount. The corrosion-resistant 5" x 5" reinforced extension arm attaches to the base of the backboard and to the outer perimeter of the frame allowing for the preferred "clear view" style. Upper brace arms are provided for maximum stability. The Pressure Breakaway Goal attaches directly to the extension arm so it will withstand the weight of even the most aggressive slam dunks.



655 MAX

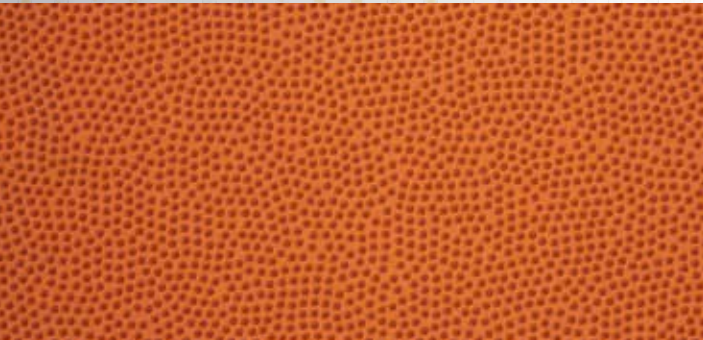
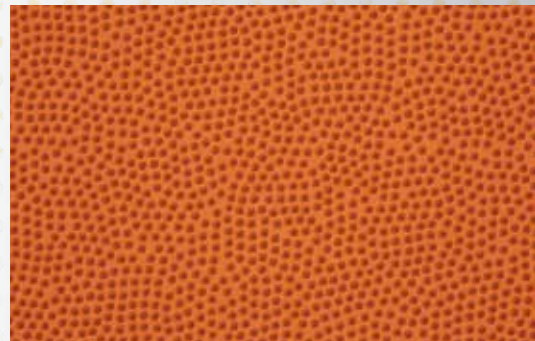
42" x 60"
CLEARVIEW
BACKBOARD
(item # 69560)

656 MAX

42" x 72"
CLEARVIEW
BACKBOARD
(item # 69572)

655 STEEL

42" x 60"
STEEL
BACKBOARD
(item # 69565)



douglas[®] // ***HOOPS***

1-800-553-8907
douglas-sports.com