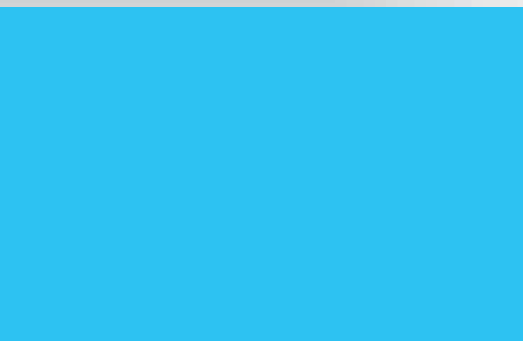
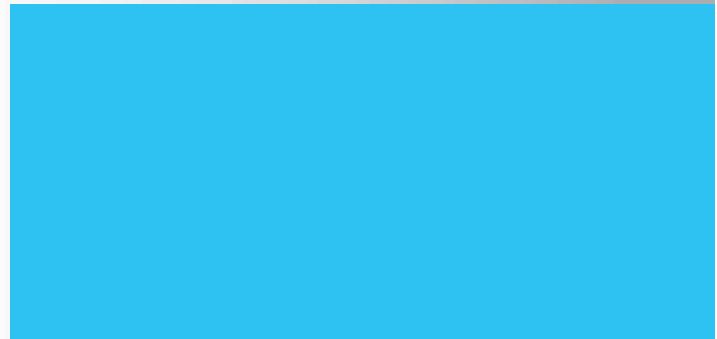




# PICKLEBALL

quality products



# Douglas® Pickleball Posts & Nets

USA Manufactured  
by Douglas® 



## ○ Pickleball Premier™ XS Posts

Green (Item # 63074)

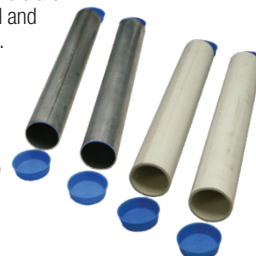
Black (Item # 63075)

The Cadillac of posts is also available for pickleball court construction measuring 54" in length to sit 36" above ground. These 2-7/8" OD round posts are constructed of 8-gauge steel. Posts are internally wound and feature a jam-free cable tensioning hardware system. Plated steel gear housings and caps are made of die-cast zinc. Gear function is 30:1 to ensure a smooth, easy operation. Posts feature Allied's® superior Flo-coat™ galvanization process and are then finished in forest green or black baked-on polyester powder coat to resist rust and increase durability. Integrated welded steel lacing rods are included for a professional net installation. Flush mounted gear plate cover and removable handle are chrome plated. Stainless Steel and Brass gears are also available.

### Corresponding Ground Sleeves:

24" PVC  
(GS-24PVC) (Item # 63164)

24" Aluminum  
(GS-24RD) (Item # 63171)



2 7/8"

## ○ Pickleball Premier™ RD Posts

Green (Item # 63070)

Black (Item # 63071)

These popular posts are designed for pickleball court construction measuring 54" in length to sit 36" above ground. The Premier™ 3" OD round (RD) posts are constructed of heavy-duty 11-gauge steel. Posts are internally wound and feature a self-locking gear mechanism. Gears are constructed of plated steel and the small gear is case hardened. Gear housings and caps are made of cast aluminum alloy. Gear function is 30:1 to ensure a smooth, easy operation. Posts are finished in forest green or black baked-on polyester powder coat finish to resist rust and increase durability. Integrated welded steel lacing rods are included for a professional net installation. Gear plate cover and removable handle are chrome plated.

### Corresponding Ground Sleeves:

24" Steel (GS-24) (Item # 63424)

3"



## ○ SW-36 Deluxe Pickleball Posts

Green (Item # 63078)

Black (Item # 63079)

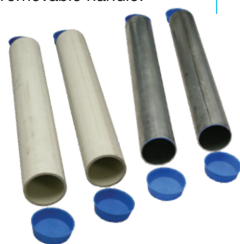
These recreational workhorse posts are designed for pickleball court construction measuring 54" in length to sit 36" above ground. These classic external wind posts are constructed of 8 gauge steel in 2-7/8" OD. The posts, external gears and handle are finished in forest green or black baked-on polyester powder coat finish to resist rust and increase durability. Integrated welded steel lacing rods are included for a professional net installation. The aluminum deluxe reel offers a smooth adjusting operation with a side mounted removable handle.

### Corresponding Ground Sleeves:

24" PVC (GS-24PVC) (Item # 63164)

24" Aluminum (GS-24RD) (Item # 63171)

2 7/8"



## ○ Pickleball Nets

These Douglas® nets meet the IFP and USA's requirements for official Pickleball and QuickStart Tennis sizes. Nets boast the same features as our Douglas® tennis nets and carry a 4 year warranty. Custom sizes are available.

JTN-30

36"h x 21'9"l (Item # 20105)

PN-30 -Optional shorter height

31"h x 21'9"l (Item # 20103)



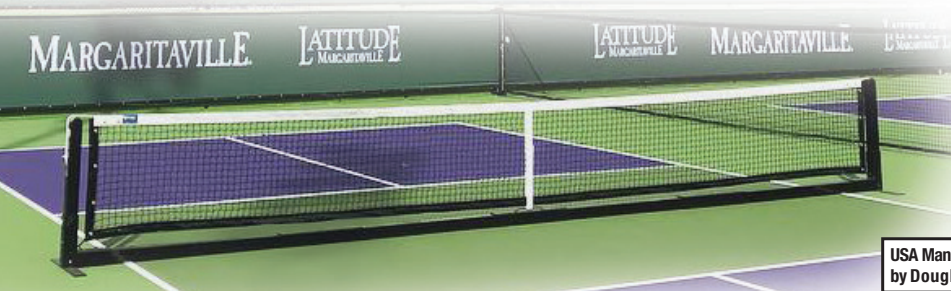
## ○ Pickleball Premier™ SQ Surface Mount

Black (Item # 63080)

Easily convert existing tennis courts to pickleball courts with these easy-to-install surface mount posts. These 36" high posts boast all the features of the standard Premier™ SQ posts except they offer a heavy-duty bottom welded base plate to secure posts to the playing surface. The Premier™ SQ posts are constructed of heavy-duty 11-gauge steel. Posts are internally wound and feature a self-locking gear mechanism. Gears are constructed of plated steel and the small gear is case hardened. Gear housings and caps are made of cast aluminum alloy. Gear function is 30:1 to ensure a smooth, easy operation. Posts are finished in forest green or black baked-on polyester powder coat finish to resist rust and increase durability. Integrated welded steel lacing rods are included for a professional net installation. Gear plate cover and removable handle are chrome plated.



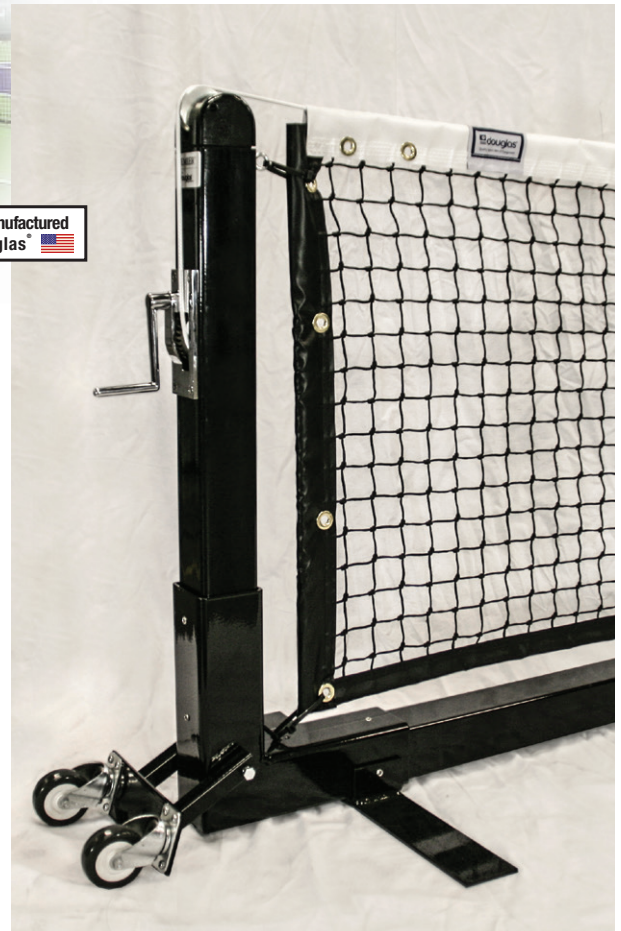
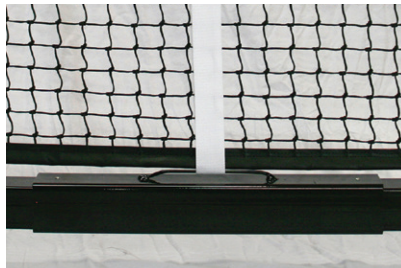
# Portable Pickleball Systems



USA Manufactured by Douglas

## ○ Douglas® PPS22-SQ Portable Pickleball 36”h x 22’1 (Item # 63122)

Portable PPS-SQ systems are easy-to-assemble and offer the same long-lasting features as the classic Premier™ SQ tennis post. The 3” square post is constructed from heavy-duty 11-gauge steel. This portable system is supported by unique flat stabilizer legs that offer a greater range of play and increases player safety. Post is internally wound and features a self-locking gear mechanism. Gears are constructed of plated steel and the small gear is case hardened. Gear housings and caps are made of cast aluminum alloy. Gear function is 30:1 to ensure a smooth, easy operation. Systems are finished with black baked-on polyester powder coat to resist rust and increase durability. Heavy-duty base frame is also constructed of 11-gauge 3” square steel and 3-1/2” square 3/16” heavy-wall steel. Net easily attaches with the top cable and to an eye-bolt on the base frame; no lacing rods are needed. Systems are complete with the PN-30 Pickleball net and a velcro center strap. Flush mounted gear plate cover and removable handle are chrome plated. The transporter features heavy-duty non-scurf swivel casters that allow for smooth and easy mobility. Transporter bracket simply flips up and out of the way while unit is in play.



## ○ SwiftNet Portable Pickleball Net (Item # 33165)

The SwiftNet Portable Pickleball Net System allows precise regulation heights from their net. The unique locking system and supportive brace used on this system keep it at the perfect 34” height at the center and 36” height at side lines of the court. The net uses a high-tensile, non-stretch top cord which means that the net doesn’t sag or require re-adjustment even after weeks of use. With only five parts, the net can be quickly and easily assembled (or disassembled) in under 3 minutes. The SwiftNet is incredibly lightweight, weighing 14 lbs.



## ○ PickleNet Deluxe

36”h x 22’1 (Item # 33162)  
With the PickleNet players can enjoy Pickleball on any flat surface indoors or outdoors. Complete system is fast and simple to assemble and easily maneuvered with the 4” locking wheels. The PickleNet Deluxe system is made from powder-coated steel and comes in official Pickleball dimensions (22’ x 34”). Center-strap design maintains consistent height along the net. Adjustment straps on net edges provide excellent net tension. Made from heavy 420D nylon, our PickleNet Deluxe bag features a durable zipper, carry straps, and internal sections to make portable net storage easier than ever. Strong 1.5” x 3” oval tubing allows for a fast set up and automatic alignment of the center frame. The elastic bottom net band speeds up net set-up, helps maintain consistent net tension, and takes stress off of the net to increase durability.



## ○ Pickleball Portable Set

36”h x 22’1 (Item # 33160)  
Lightweight, portable pickleball set can be set up and moved in as little as 8 minutes. Frame is made from hollow steel tubing that is powder coated with a bright green paint. System has a raised lateral bar that allows for balls to pass underneath and a center stabilizer for additional support. The black mesh net has vinyl white net bindings with an “easy buckle” net tension system. Portable system comes with a nylon carry case with a velcro strap for the frame.



# Douglas® Windscreen

Douglas® is the leading USA manufacturer of windscreens, privacy screen and sport screen. With over 50 years of custom fabrication experience we have the highest and most strict material specifications in the industry. All Douglas® screens are specifically manufactured for tough outdoor conditions with UV and weather protection extruded in every fiber. Each screen is custom finished with either an 18oz solid vinyl overlay and 4-ply hem, or 3-ply with a double sewn solid vinyl insert. All finishing includes high performance exterior grade thread and #2 rust proof brass grommets. The diverse line of windscreens offered by Douglas® ensures you can find the best material at the best price for any recreational or industrial application. Our sales representatives are highly knowledgeable and provide unparalleled service and support.



## USA Manufactured

### QUALITY

As the manufacturer, we control every aspect of the production process. Every piece of material goes through multiple quality control checks to ensure accuracy and precision. Douglas's meticulous attention to detail guarantees consistent, quality craftsmanship every time.

### SELECTION

Douglas® carries a complete line of premium windscreens in both polypropylene and vinyl coated polyester. Our wide range of materials includes both open and closed mesh fabrics, standard and custom colors and digital print ready. Our sales representatives will gladly guide you through the options and help you select the material that is best suited for your application.

### SERVICE

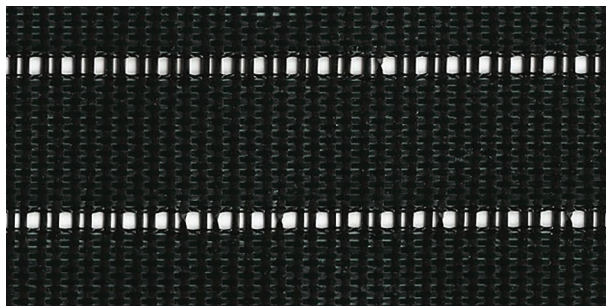
Our dependable customer service team takes pride in quick response times with most inquiries being answered in no more than 24 hours. Every employee at Douglas® is cross trained on all products to ensure we always have the answers to all your questions. Our goal is your 100% satisfaction and we work relentlessly to exceed your expectations.

### CUSTOMIZATION

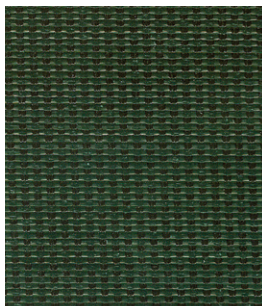
Our screens are custom made to your exact specifications with any custom color, design, cut-out and size possible. We can assist with all aspects of your project such as graphic design, layout and drawings.

## PolyPro™ Plus Premium

This 100% Polypropylene material is Douglas's® most popular windscreen. Choose from OMP (Open Mesh) or CMP (Closed Mesh) fabric. This low-maintenance material offers classic good looks and highly durable performance. Polypropylene material is heat-set so your screens will never shrink or change shape. Weather and UV protection is extruded into every fiber of Douglas® Poly-Pro Plus Premium Windscreens for maximum performance and long life.



Black Open Mesh

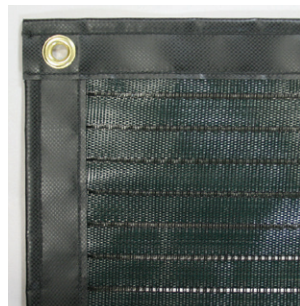


Green Closed Mesh

Fabric:	100% polypropylene; OMP: Open Mesh - 28 x 14 leno weave CMP: Closed Mesh - 30 x 16 leno weave
Windbreak:	Open - 85% Closed - 95%
Weight per square yard:	Open - 7 oz. Closed - 8 oz.
Tensile Strength:	Open - 380 x 185 Closed - 450 x 215
Colors:	Dark Green or Black
Warranty:	4-year limited

### Douglas® Polypropylene Features & Options

Windscreens are available in standard 6' and 9' heights although panels can be customized to any dimensions. Any screen length is available; however, 60' is the maximum recommended length per panel.



#### Douglas® 4-Ply Hems

PolyPro Plus is finished with 4-Ply reinforced hems. Finished hems are constructed with a double stitched 18 oz vinyl overlay to provide incredibly strong finished panels. Built-in #2 brass grommets are spaced every 12" on the sides and every 18" on the top and bottom.



#### Center Tab with Grommets

All 9' screens include a Center Tab with grommets for anti-billowing installation.



#### Center Reinforcement Tape

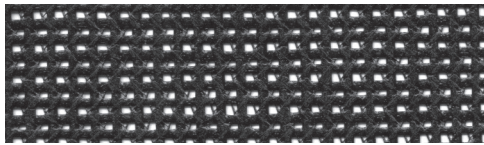
Optionally, 9' screens may substitute a Center Reinforcement Tape (CRT) with grommets that can be laced to the fence.



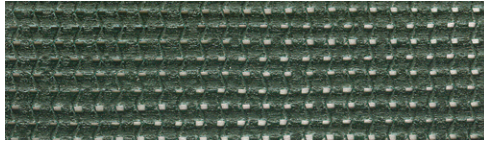
**AVR Air Vents** If windscreens are planned for high wind areas and are over 6' high, reinforced air vents are recommended. These optional cut and sewn AVR's measure 10" w x 8" and are placed at 10' intervals along the length of the screen.

# Vinyl Coated Polyester (VCP)

This versatile and attractive windscreen fabric is durable and boasts great weather resistance. VCP screens are available in a variety of colors and custom digital printing and logos can be printed directly on the material.



Black



Dark Green



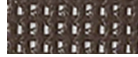
Yellow



Red



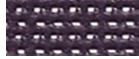
Navy Blue



Brown



White



Purple



Burgundy



Bright Green



Royal Blue



Orange



Gray

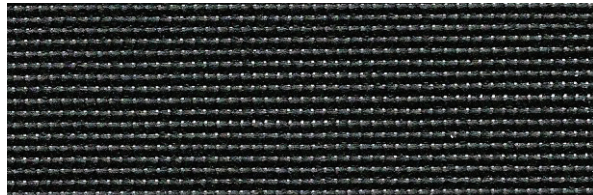


Open Blue

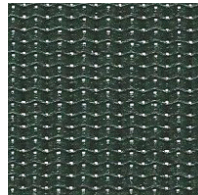
Fabric:	50% vinyl, 50% polyester; Open Mesh - 9 x 12 weave
Windbreak:	Open - 80%
Weight per square yard:	Open - 8.5 oz.
Tensile Strength:	Open - 230 x 200
Standard Colors:	Dark Green or Black
Other Colors:	Yellow, White, Royal Blue, Red, Purple, Orange, Navy Blue, Burgundy, Gray, Brown, Bright Green and Open Tournament Blue
Warranty:	3-year limited

## VCP Max™

VCP Max™ goes one step further by offering maximum tensile strength and visual blockage. At 87% windbreak, VCP Max™ allows more airflow than closed mesh screens, but provides a better visual background than open mesh screens.



Black



Dark Green

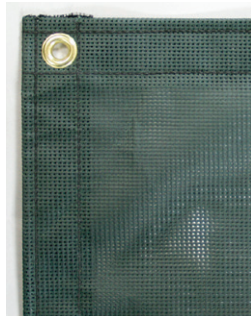


Open Tournament Blue

Fabric:	16 x 17 weave
Windbreak:	85%
Weight per square yard:	Open - 10 oz.
Tensile Strength:	395 x 401
Colors:	Dark Green, Black or Open Tournament Blue
Warranty:	4-year limited

### ○ Douglas® Vinyl Coated Polyester (VCP) Features

Windscreens are available in standard 6' and 9' heights although panels can be customized to any dimensions. Any screen length is available; however, 60' is the maximum recommended length per panel.



**Douglas® 3-Ply Hems**  
Vinyl Coated Polyester fabrics are finished with Douglas extra-strong 3-Ply hems. Finished hems are reinforced with solid vinyl inserts and double sewn to 1-1/2" wide. Built-in #2 brass grommets are spaced every 12" on the sides and every 18" on the top and bottom.



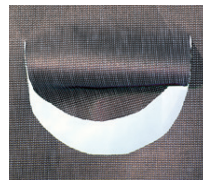
**Center Reinforcement Tape**  
Optionally, 9' screens may substitute a Center Reinforcement Tape (CRT) with grommets that can be laced to the fence.



**Center Tab with Grommets**  
All 9' screens include a Center Tab with grommets for anti-billowing installation.

### ○ Vinyl Coated Polyester Air Vent Options

Air Vents allow wind to pass through your windscreen without damaging your fence or windscreen. If the screens are closed mesh, over 6' high or planned for high wind areas air vents are recommended. Standard Air Vents are placed every 10' along the length of the screen.



**AV Air Vents**  
Die-cut and heat sealed half moon air vents are recommended and are only available on vinyl-coated polyester material. Air vents measure 8" w x 5" h.



**AVR Air Vents**  
Reinforced air vents can be cut and sewn into any windscreen material. Reinforced air vents measure 10" w x 8" h.

## Digital Printing

Our Vinyl Coated Polyester windscreen fabrics can be customized with a school name, logo, mascot or advertisement. Windscreens are printed with our high quality UV digital printing process. Our elite printing method allows us to print directly on our materials eliminating the "white back" eye sore as used by other printing companies. We specialize in wide format, multi-color print completely treated for long lasting outdoor use. Once printed, the ink becomes part of the material and will not crack, peel or fade. All print jobs include a complimentary artwork design proof for approval. Once approved; our state of the art digital printer runs the exact blueprint from the artwork proof with laser precision eliminating any chance of error.



# Court Accessories

## Fence Guard

Eliminate chain link injuries and add some color to your court. Our premium quality protective fence covers offer the highest level of player protection. Don't be fooled by low cost, thin walled look-a-likes, demand the best! The professional teardrop shaped profile is easy to install with just one person. Exterior grade UV resistant polyethylene construction is maintenance free and is designed to be the longest lasting fence cap available. Pre-drilled every 24" and includes ties for securing to the fence. Available in (3) grades of durability with (6) colors to choose from. Comes in 7' sections; in 84' cartons only.



**Lite**  
(Item # 36984L)  
1 Year limited warranty  
.05 wall thickness  
2-5/8"W x 4"H x 7'L  
Yellow, forest green,  
red or blue.

**Standard**  
(Item # 36984)  
3 Year limited warranty  
.07 wall thickness  
2-5/8"W x 4"H x 7'L  
Yellow, forest green,  
red, blue, orange or  
white.

**Premium**  
(Item # 36982)  
5 Year limited warranty  
.10 wall thickness  
3"W x 4-1/2"H x 7'L  
Yellow, forest green,  
red or blue.



## Poly-Cap

250' roll (Item # 36966)  
100' roll (Item # 36960)  
Package 100 ties (Item # 36968)  
Poly-Cap is UV treated and is available in Bright Yellow (standard), Dark Green, Orange or Black. Improves safety and makes any field more attractive. Comes pre-slit and ready to install. Yellow or Dark Green 18" UV tie-raps are recommended every 3' to secure poly-cap to fence. 2-Year warranty. Please specify desired color when ordering.

**Poly-Cap Installer Tool**  
(Item # 36969)

Install 100' in less than 10 minutes!



## Prefabricated Divider Netting

Create a barrier in between pickleball courts for uninterrupted play with Douglas® high quality divider nets. These prefabricated divider netting panels measure is 10' x 60'(65') and can be used indoors or outdoors. Netting in 1-3/4" sq mesh and the outside perimeter has a reinforced sewn rope border making it easy to hang. Choose from Black or Green netting. Court divider nets can also be custom fabricated to your facility's required dimensions.

## #420 Knotless Pylon

This lightweight, pylon netting is ideal for divider netting. #420 Knotless Polypropylene (Pylon) is 1-1/2" square mesh and has a 125# break strength. Choose from Black or White. Weather treated to withstand moisture and sunlight. Netting is finished with a vinyl border and provides the netting with added strength while keeping the nets shape. The reinforced, double stitched vinyl also gives the net a sharp appearance. Optional brass grommets can be added and are placed every 18".



2.0 mm; 1-3/4" Sq Mesh  
10' x 65' Panels

Lightweight; 125 lb. break strength  
**Black, Tape Bound with Grommets**  
(Item # 32020)



2.0 mm; 1-3/4" Sq Mesh  
10' x 60' Panels

Lightweight; 125 lb. break strength  
**Black, Rope Border (Item # 32012)**  
**Green, Rope Border (Item # 32010)**



## Premium Knotless Polypropylene

This Premium high tenacity Polypropylene (Pylon) netting offers maximum longevity and durability. Pylon netting is ideal for high impact applications. Netting is treated and extruded through the fibers for maximum weather and UV resistance. Netting is finished with a sewn rope border

3.0 mm; 1-3/4" Sq Mesh  
10' x 60' Panels

Medium Weight, 250 lb break strength  
**Black, Sewn Rope Border (Item # 32025)**



## Pickleball Paddles and Balls Set

(Item # 33168)

This bundle comes with four Rally Tyro 2 Composite Paddles that will make it a snap to get started playing doubles. Along for the ride are six green Jugs Indoor Balls, which are known for their high visibility and great bounce. Rally Tyro 2 Paddles are some of the best beginner paddles available. They're a light weight 6.7-7.0 ounces, which allows you to react quickly at the net while controlling your shots. They have a small grip to appeal to most any player. Rally Tyro 2 Paddles have a standard 7-3/4" wide face. The Jugs balls you get in this bundle are a bright green color that stands out against most courts. These balls are made of a durable plastic that performs well on many different playing surfaces.



## Court Signs

Court Rules (Item # 34872)

Soft Sole Shoes Only (Item # 34872A)

Courts Closed for Maintenance (Item # 34872B)

Please Register (Item # 34872C)

Please Keep Gates Closed (Item # 34872D)

Durable dark green plastic court signs with white printing. Signs have pre-drilled mounting holes.

Vertical orientation Signs measure 8 x 10.



### Court Numbers

(Item # 34756)

Durable dark green plastic court signs with white printing. Signs have pre-drilled mounting holes. Vertical orientation sign measure 8" x 10". Choose from numbers 1 to 20; please specify desired numbers.



### Court Rules

Tennis Play Only

Tennis Shoes Only, No Other Shoes Allowed

No Skateboards, Bikes or In-line Skates

No Food or Drinks on Court

Limit Play to One Hour if Others Are Waiting

Surface Slippery When Wet or Dirty

## Straightliner™ Tape Machine

The Straightliner is the fastest and easiest tool to mask court boundaries for painted lines.

The tool lays masking tape lines precisely and evenly up to 3" apart. Tape width guides can be changed in seconds. Frame is constructed of black powder coated steel and the tape holder is non-corrosive aluminum. Other features include smooth, non-marking black rubber rollers and comfort grip black rubber handles. The removable 9" pointer guide screws to front of base frame. The standard Straightliner only lays straight parallel lines while the Plus model lays straight and curved. Masking tape is not included.



### Straightliner™

(Item # 63700)

Lay straight parallel masking tape lines 1-1/2", 2", 2-1/2" or 3" apart. Can use 1" or 2" wide masking tape. Includes (2) tape guides to accommodate tape widths.

### Straightliner™ Plus (Item # 63600)

Plus model creates curves, circles and straight lines for court boundaries. For use with 1" wide masking tape. Creates parallel lines 1-1/2", 2" or 2-1/2" apart.

## Court Dry

CourtDry I (Item # 34735)

EZ RR-36 Roller Replacement (Item # 34603)

Stop wet weather conditions from interfering with tennis matches or other outdoor court games with the Court Dry. The tough PVA foam roller quickly absorbs and pushes away water. Powdercoated stainless-steel frame has a T-socket that securely holds the roller and handle in place during use. Removable roller can easily be substituted for a replacement roller.

CourtDry II (Item # 34734)

SR-DRR-36 Roller Replacement (Item # 34742)



## Deluxe Courtsider Benches

5' White (Item # 34764)

5' Forest Green (Item # 34765)

5' Open Blue (Item # 34765B)

6' 6" White (Item # 34762)

6' 6" Forest Green

(Item # 34763)



Courtsider Benches are the most popular court side bench used in US Tennis facilities. Benches are ideally suited for private and public court use, pool patios, parks and golf tees.

Choose from 5' or 6.5' length models. Benches are constructed of extruded high density plastic resin that are treated with UV and mildew inhibitors. Material is maintenance-free, weatherproof and lightweight. Bench is fairly portable and can be moved around easily if needed. Slatted seats are contoured for ergonomic comfort and stability. Middle slat is a one-piece construction for additional strength and support. Seat is supported by durable solid plastic legs that can be bolted down to solid surfaces for permanent positioning. Choose from green, white or blue. Packaged in (5) easy-to-assemble components (seat and back are preassembled).

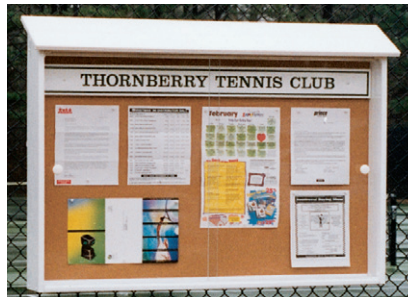
## The Outpost

Model 50, Display Area: 22.5"H x 20.5"W (Item # 33872) (shown)

Model 150, Display Area: 22.5"H x 44.5"W (Item # 33870) (shown)

Model 250, Display Area: 29.5"H x 44.5"W (Item # 33871)

Outdoor message display boards are an easy, maintenance-free way to post items outdoors. Message board is constructed of environmentally friendly recycled plastic and will not rot, splinter or crack and never needs to be painted. The Outpost features, weatherproof exterior, sliding Plexiglas doors on rust free aluminum tracks and a cork display area. Choose from white, dark green or black. Display boards can be post or fence mounted; installation accessories are sold separately. Customized name signs are available. Shown with optional lock, header sign and fence kit. Choose from (3) models.



## Cabana Benches

6' Model (4' long bench) (Item # 30021)

8' Model (6' long bench) (Item # 30019)

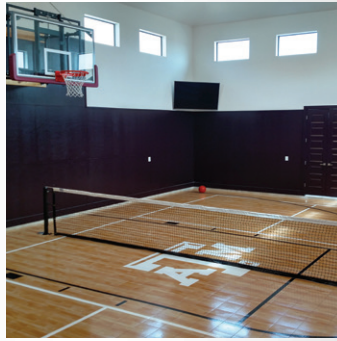
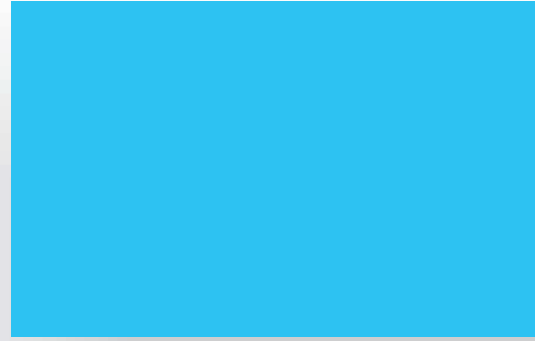
10' Model (8' long bench) (Item # 30020)



The Covered Cabana Benches are an attractive way to improve the look and functionality of your court. The square heavy-gauge steel frame has a black powder coat finish for ultimate protection.

The Durawood plastic composite bench is maintenance free and weather resistant. Bench is bolted and welded to the heavy-gauge steel framework. Choose from (3) possible seating configurations. Standard colors are forest green, pacific blue, burgundy, black and Forest Green Stripe. Custom canvas colors and printing options are available at an additional charge. Bench can be installed "Surface Mount" or "Direct Burial".





**50**  
YEARS  
est. 1967



USA MANUFACTURER

1-800-553-8907  
douglas-sports.com