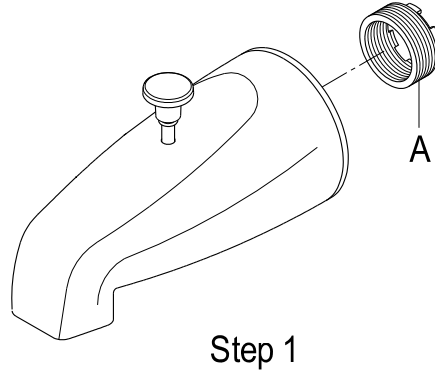


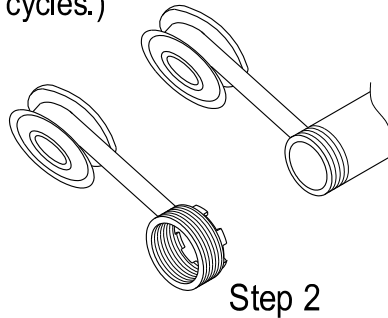
## INSTALLATION INSTRUCTIONS For Use With EDO's Tub Spout

### Installation Instruction:

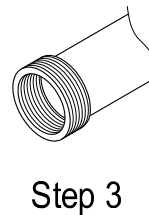
1. Remove bushing(part A) from spout.



2. Wrap Teflon tape on both bushing and pipe.  
(Considering the different Teflon tapes are with different thickness, please wrap Teflon tape at least 6 cycles. It would be better to wrap more than 6 cycles.)



3. Screw pipe into bushing.



4. Screw bushing into spout.

