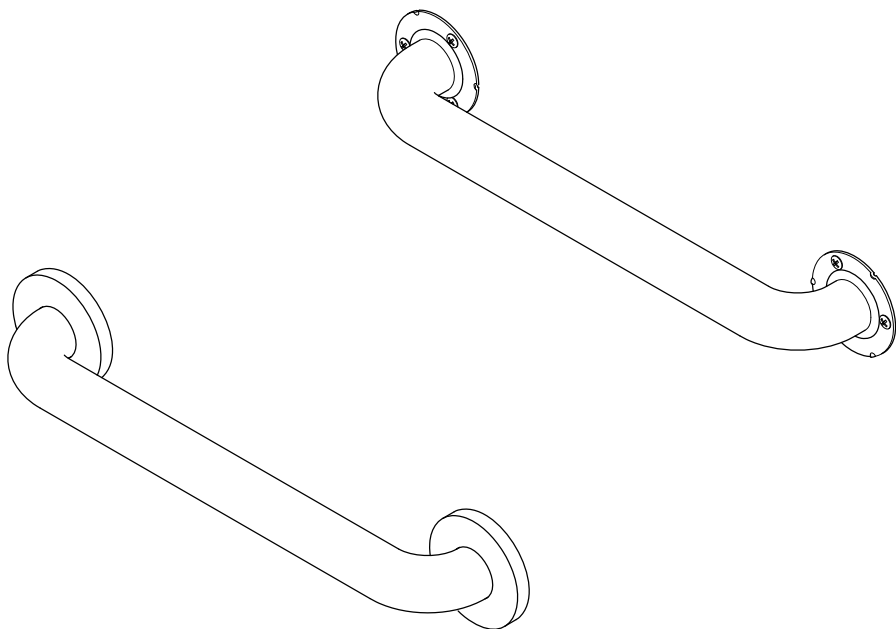


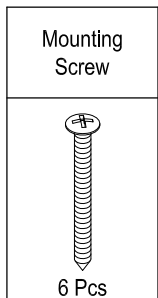
# KINGSTON

KITCHEN & BATH

## Grab Bar with or without Cover Installation



### Parts:



MODEL	FINISH
CS	Stainless Steel, with Cover
CT	Stainless Steel, with Cover, Textured
ES	Stainless Steel, without Cover
ET	Stainless Steel, without Cover, Textured

## CAUTION

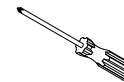
Failure to follow all installation directions may cause product to detach from the wall and cause serious injury

www.kingstonbrass.com  
TOLL-FREE CUSTOMER SERVICE: 1-877-2-KBRASS  
TECHNICAL SUPPORT E-mail: service@kingstonbrass.com  
12775 Reservoir Street, Chino, CA 91710

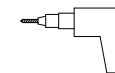
### TOOLS REQUIRED



Marking Pencil



Phillips Screwdriver



Power Drill

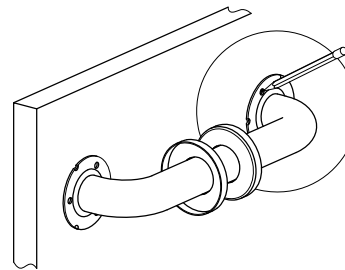


Fig. 1

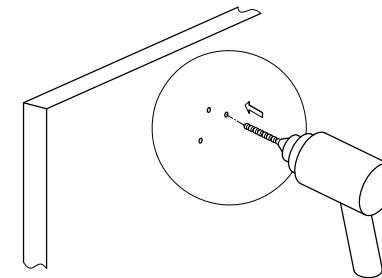


Fig. 2

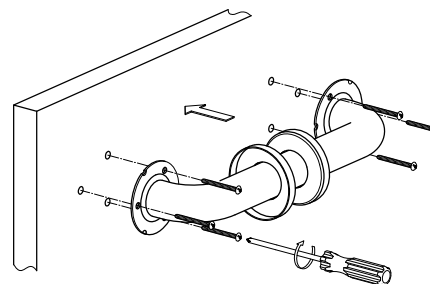


Fig. 3

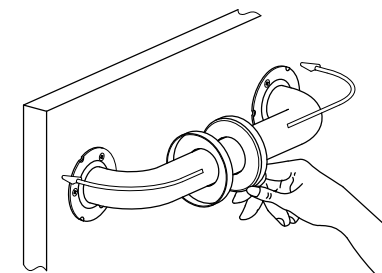


Fig. 4

### Installation Steps:

1. Locate position on the wall and mark location of the holes.
2. Drill Starter holes (5/64" ).
3. Mount grab bar to the wall using 2" screws (Enclosed).

This grab bar is designed to be installed on wood bracing, if a proper wood bracing is not available consult your contractor as to the best anchors to use for your specific application some options available are Tile/ masonry anchors, toggle bolts, plastic anchors, metal anchors and drywall anchors.

### Cleaning

Clean with a damp cloth only.  
Avoid using metal or abrasive polishes.