



Cyclone X-Series Bead Seaters

Operating Instructions

PART #20390/#20390AL/#20391/#20391AL/#20392



Please read all information before operating these products

Instructions:

SAFETY WARNING:

READ AND FOLLOW ALL WARNINGS, CAUTIONS AND INSTRUCTIONS ASSOCIATED WITH THE PROPER USE OF THIS PRODUCT. FAILURE TO COMPLY COULD RESULT IN DEATH, BODILY INJURY AND/OR DAMAGE TO EQUIPMENT.

Warning: *This product as well as all tire tools, should never be used by persons unless they have been trained properly according to the O.S.H.A. regulation #29CFR 1910.177 entitled "Servicing Single-Piece & Multipiece Rim Wheels". Copies of this regulation can be obtained by contacting this manufacturer. 800-352-9852 or sales@esco.net.*

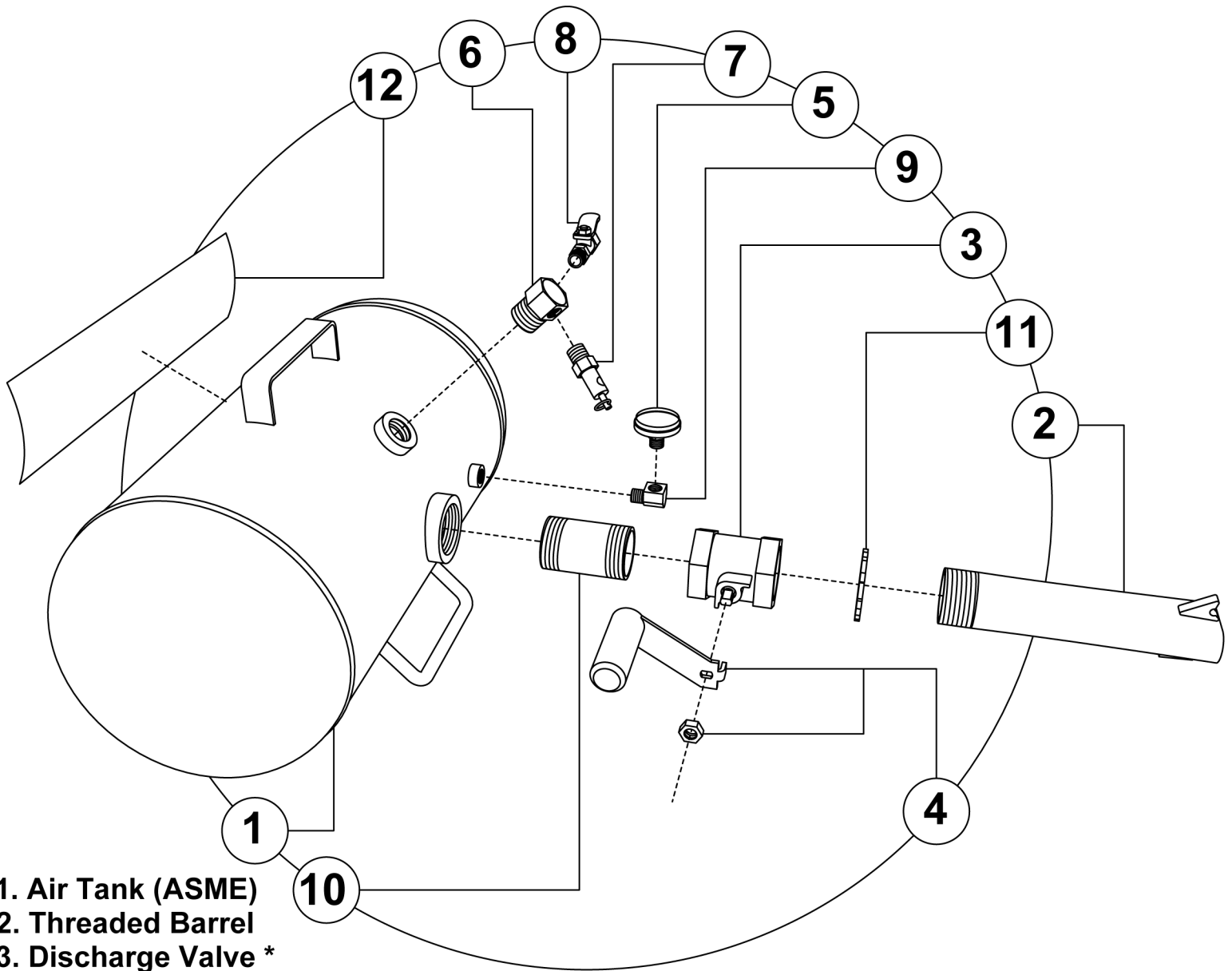
OPERATOR MUST ALWAYS WEAR EYE PROTECTION WHEN SERVICING TIRES/WHEELS. KEEP BYSTANDERS 20 FEET AWAY WHEN TANK IS CHARGED. ALWAYS STORE AND TRANSPORT WITH DISCHARGE VALVE OPEN. ALWAYS BE SURE PRESSURE RELEASE IS CLEAR OF FOREIGN MATTER (I.E. ICE, DIRT, SAND, ETC...) KEEP OUT OF REACH OF CHILDREN. DO NOT TAMPER WITH PRESSURE SAFETY RELEASE. EXCESSIVE PRESSURE COULD CAUSE TANK FAILURE RESULTING IN INJURY OR EVEN DEATH.

OPERATING INSTRUCTIONS

1. Use eye protection when servicing tire/wheel.
2. Keep work area clear.
3. Lay mounted tire flat on floor or ground with wide flange up (inflating stem facing down) place stand under rim near inflating stem.
4. Operating pressure of unit is 80-100 psi from compressed air supply. Increase pressure or decrease pressure as necessary. Safety pop off set at 150 psi.
5. Attached self holding chuck from air supply to inflating stem on rim.
6. Hold bead seater at an approximately 45 degree angle from floor with guide on top of rim.
7. Hold handle tight and quickly open discharge valve.

Larger tires may be too difficult to seat, please make sure to use the proper sized Bead Seater for the Size Tire.

Cyclone X-Series Parts Breakdown



- 1. Air Tank (ASME)
 - 2. Threaded Barrel
 - 3. Discharge Valve *
 - 4. Handle & Nut Assembly For Valve
 - 5. Air Gauge
 - 6. 3/4" x 1/4" x 1/4" Dual Air Manifold Fitting
 - 7. Safety Release Valve (ASME)
 - 8. 1/4" Filler Valve
 - 9. 1/4" 90 Degree Fitting
 - 10. 1-1/2" Pipe Nipple
 - 11. Ring Lock Nut
 - 12. Label
- * Comes Standard w/Handle & Nut