

# APP USER GUIDE



**24/7 HELP** For 24/7 customer support, visit [feit.com/help](http://feit.com/help)

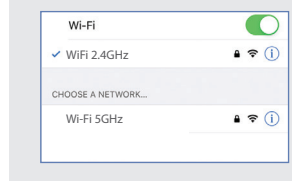
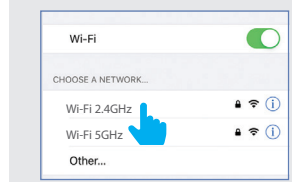
**System Requirements**  
Minimum: iOS 11.0, Android™ 6.0 Marshmallow or higher  
- Dedicated 2.4GHz Wi-Fi Network -

Your screen images may differ from this user guide.

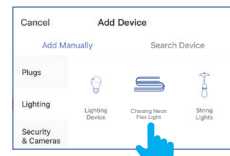
BEFORE USING THIS USER GUIDE FOR INCLUDED INSTALLATION GUIDE FOR PROPER PRODUCT INSTALLATION.

NOTE: Only works with 2.4GHz Wi-Fi networks.

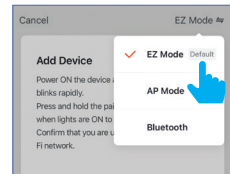
Go to your Wi-Fi settings and connect your phone to your 2.4GHz Wi-Fi network.



- 2 Tap **Lighting**, then select **Chasing Neon Flex Light**.

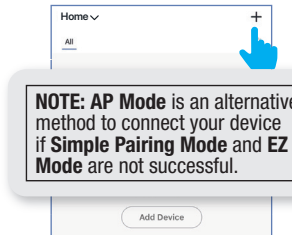


- 3 Tap the upper right corner and make sure you have **EZ Mode** selected. Follow steps 4-6 from **Simple Pairing Mode** to complete setup.



## Alternative Set-up Method AP Mode

- 1 Tap the plus icon (+) in the upper right corner.



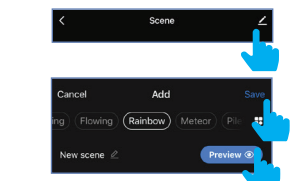
**NOTE: AP Mode is an alternative method to connect your device if Simple Pairing Mode and EZ Mode are not successful.**

- 2 Tap **Lighting**, then select **Chasing Neon Flex Light**.



## Modify

- 7 Tap **The pencil inside the DIY box** from the top right of your screen. Choose a Scene style option from the top of your screen (**Gradient, Jump, Breathe, Flashing, Flowing, Rainbow, Meteor, PileUp, Falling, Follow, Flutter, Flash, Rebound, Shuttle, Random** or **Switch**). Tap **Preview** to view the effect on your Chasing Neon Flex Light. Tap **Save** in the top right of your screen to lock in desired effect.



- A Desired Scene colors, you can choose up to 16. Tap **Preview** to view the **Scene**.
- B Select **Scene** sequence customization options by selecting desired option(s) below the color bar. Options will vary based on **Scene** type.

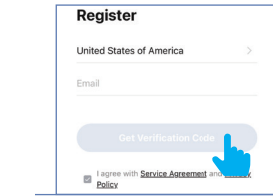


## Set Up Device

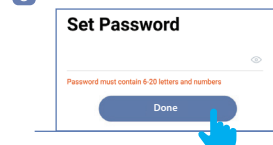
- 1 Download the **Feit Electric** app.



- 2 Launch the **Feit Electric** app. Enter an email address to register, then tap **Continue**. A verification code will be sent to your email.

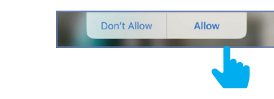


- 3 Create a password then tap **Done**.

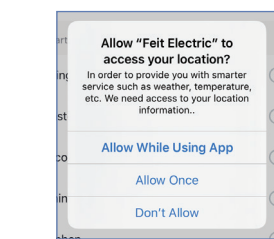


## Permissions & Location Access

**Allow** notifications (highly recommended).

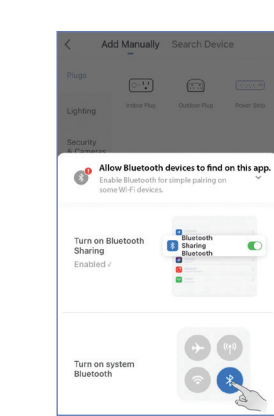


- 5 **Allow** the **Feit Electric** app to access your location to help connect your Neon Flex Light.



## Simple Pairing Mode

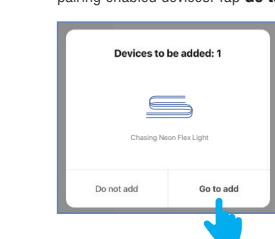
- 1 Make sure the Chasing Neon Flex Light is flashing, then tap **Add Device** or the plus icon (+) on the upper right corner.



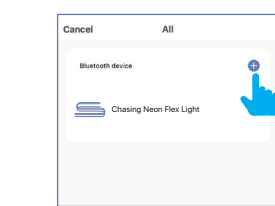
**NOTE: If your Neon Flex Light is not flashing make sure it is on by pressing the power button on the control module. Then press and hold the power button until the unit starts blinking.**

## Simple Pairing Mode

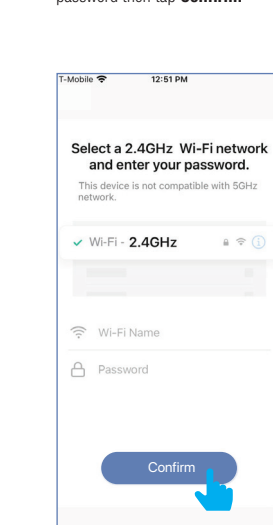
- 2 The Chasing Neon Flex Light name(s) will appear in a small window for simple pairing enabled devices. Tap **Go to add**.



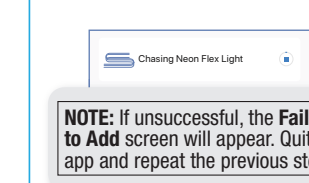
- 3 Select one Chasing Neon Flex Light from the list. Tap the plus icon (+).



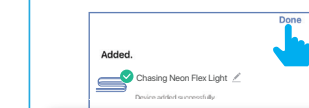
- 4 After confirming that you are on a 2.4GHz Wi-Fi network, enter your password then tap **Confirm**.



- 5 The status window will appear and show progress toward set-up.



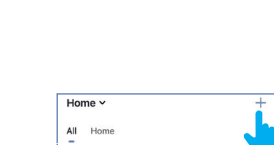
- 6 To rename press next, tap the **Pen** icon, enter the new name and tap **Done**. The Chasing Neon Flex Light is now ready to be controlled with the **Feit Electric** app.



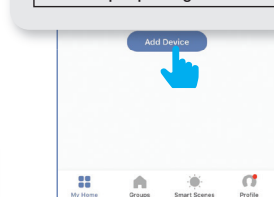
**NOTE: Constant power to the Chasing Neon Flex Light is required at all times.**

## Alternative Set-up Method EZ Mode

- 1 Tap the plus icon (+) in the upper right corner.

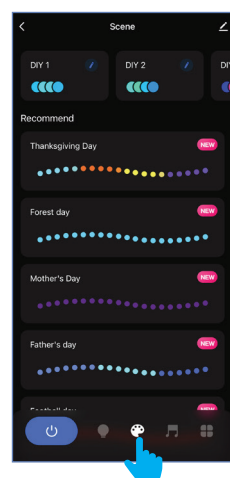


**NOTE: Use EZ Mode to set up multiple smart products at the same time or if there are issues with simple pairing.**



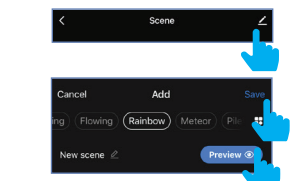
## Scene

- 6 Tap the Color icon in the bottom of the screen. Tap the desired Scene from the middle of your screen.



## Plan

- 7 Tap **The pencil inside the DIY box** from the top right of your screen. Choose a Scene style option from the top of your screen (**Gradient, Jump, Breathe, Flashing, Flowing, Rainbow, Meteor, PileUp, Falling, Follow, Flutter, Flash, Rebound, Shuttle, Random** or **Switch**). Tap **Preview** to view the effect on your Chasing Neon Flex Light. Tap **Save** in the top right of your screen to lock in desired effect.

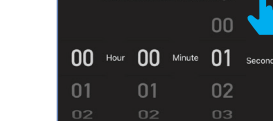
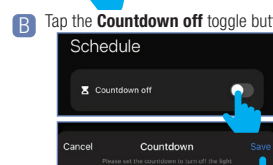
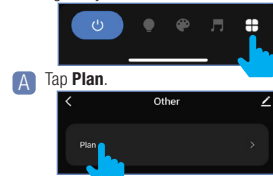


- A Desired Scene colors, you can choose up to 16. Tap **Preview** to view the **Scene**.
- B Select **Scene** sequence customization options by selecting desired option(s) below the color bar. Options will vary based on **Scene** type.



## Plan

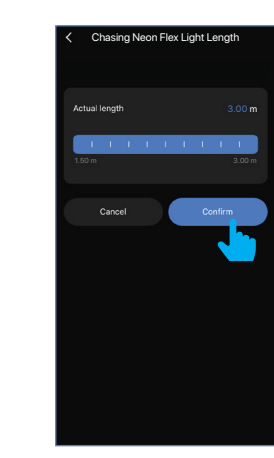
- 8 Tap the **Other** icon in the bottom right of your screen.



- C Set the countdown to turn the light off by scrolling up or down on the **Hour, Minute** and **Second**. Tap **Save** in the upper right hand corner once you have set your desired time.

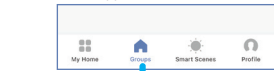
## Chasing Neon Flex Light Length

If you'd like to adjust how much of the neon flex you'd like to animate drag the slider right for a max of 3m and minimum of 1.5m



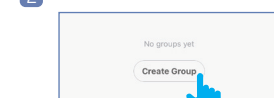
## Groups

- 1 Tap the **Groups** icon at the bottom of the app home screen.

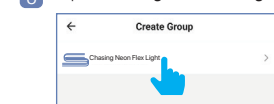


**NOTE: To create groups you will need at least two Chasing Neon Flex Lights. You can only group a Chasing Neon Flex Light with other Chasing Neon Flex Lights.**

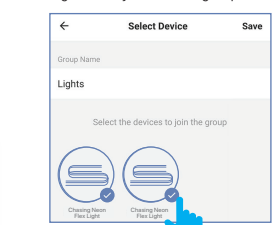
- 2 Tap on **Create Group**.



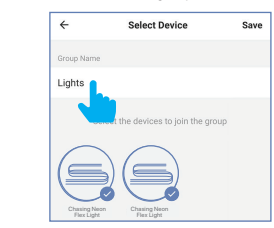
- 3 Tap on **Chasing Neon Flex Light**.



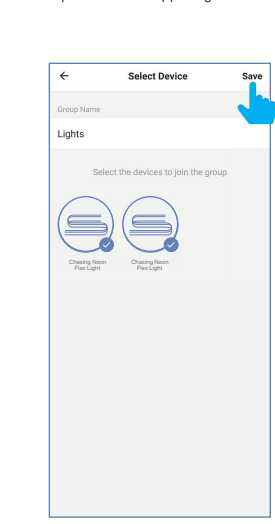
- 4 Select the Chasing Neon Flex Lights that you want to group.



- 5 Tap the group name and enter the name of the group.



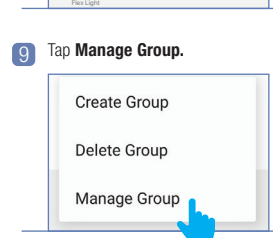
- 6 Once the group is named and the Chasing Neon Flex Lights are selected, tap **Save** in the upper right corner.



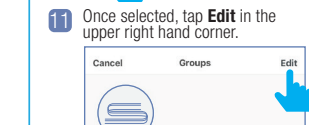
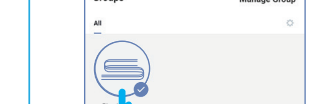
- 7 **Manage Groups** Tap the **Groups** icon.



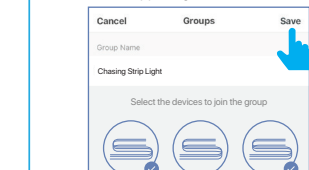
- 8 Tap the context menu in the upper right corner (⋮).



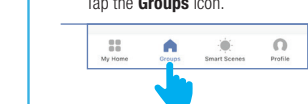
- 10 Select the group to edit.



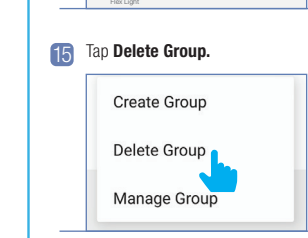
- 11 Once selected, tap **Edit** in the upper right hand corner.



- 13 **Delete Groups** Tap the **Groups** icon.

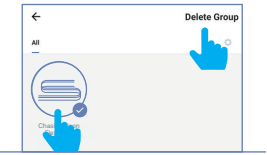


- 14 Tap the context menu in the upper right corner (⋮).

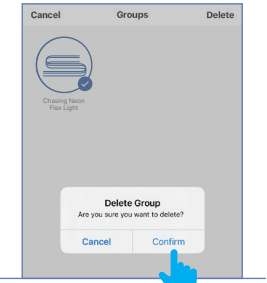


- 15 Tap **Delete Group**.

16 Select the group to delete. Once selected, tap **Delete Group** in the upper right corner.

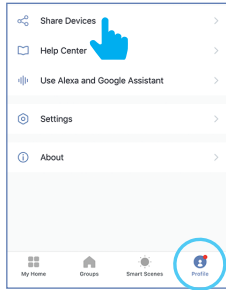


17 Tap **Confirm**.



## Share Control of a Device (Two Methods)

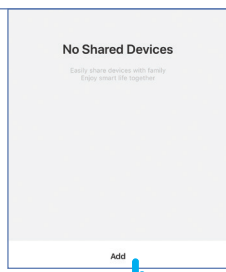
1 **Method 1:** Tap the **Profile** icon, then tap **Share Devices**.



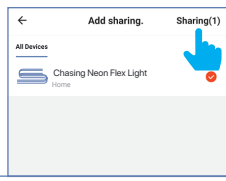
A **Method 2:** From the Chasing Neon Flex Light's settings menu, tap the **Pen** icon located in the upper right corner. Then tap **Share Devices**.



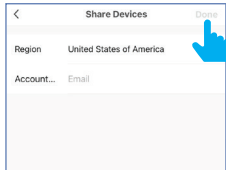
2 Tap **Add** at the bottom of the screen.



3 Select the device that you wish to share. Tap **Sharing** in the upper right corner.



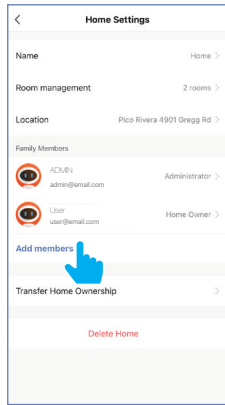
4 Enter the account name of the person you want to share with (this is typically their email address). Then tap **Done** when prompted.



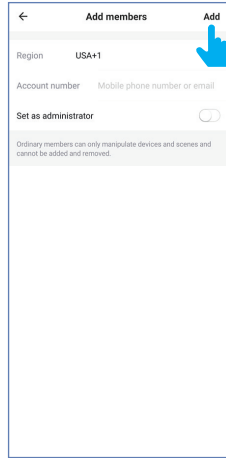
**NOTE:** New members must set up an account before sharing is possible.

## Share Control of All Devices Within a Location

1 From the home screen, tap **Profile**, then **Location Management**, then the location you would like to share. Tap **Add members**.

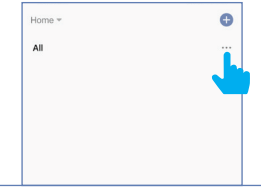


2 Enter the new member's email address then tap **Add**.

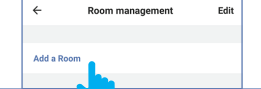


## Room Management

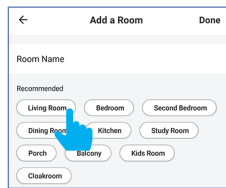
1 Tap the three dots from the home menu, then tap **Room Management**.



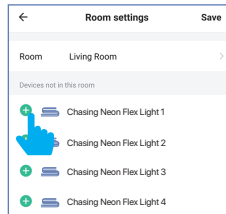
2 Tap **Add a Room**.



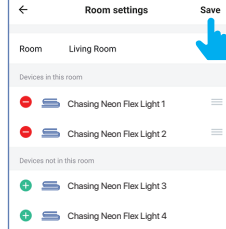
3 Tap on a preset room name or create your own.



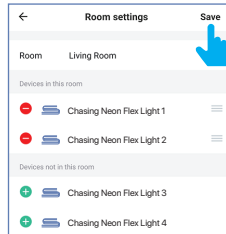
4 Add individual lamps by tapping on the icon **+** next to each Chasing Neon Flex Light's name.



5 When finished, tap **Save** in the upper right corner.

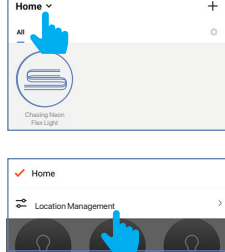


6 Remove individual Chasing Neon Flex Lights by tapping on the icon **-** next to each Chasing Strip Light's name.

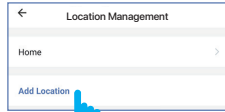


## Home Management

1 Tap **Home** from the main menu, then tap **Location Management**.

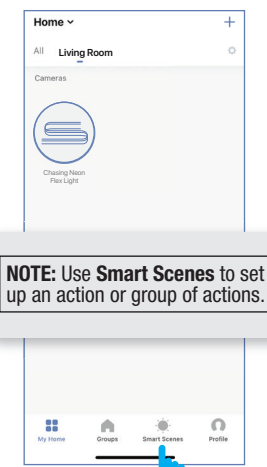


2 Tap **Add Location** to indicate where the bulbs are located.



## Smart Scenes

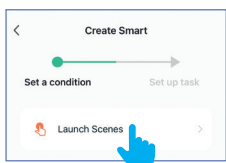
1 From the **My Home** page, tap **Smart Scenes** at the bottom of screen.



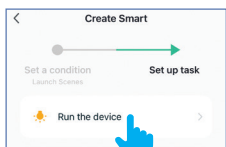
2 In the **Smart Scenes** tab, tap the plus icon **+**.



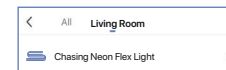
3 Tap on **Launch Scenes**.



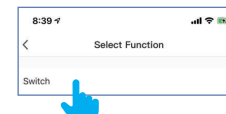
4 Tap on **Run the device**.



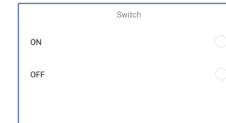
5 Select your device to initiate an action.



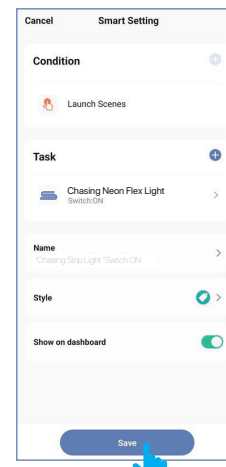
6 On the **Select Function** screen, tap on the action you want the device to perform.



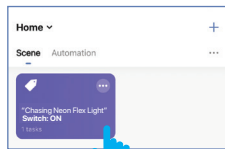
A On the Switch screen, tap On or Off.



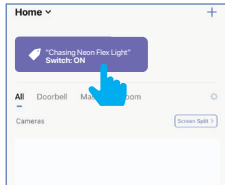
7 Review your scene, edit them if necessary, then **Save**.



8 Your action(s) will appear under **Scene** tab.

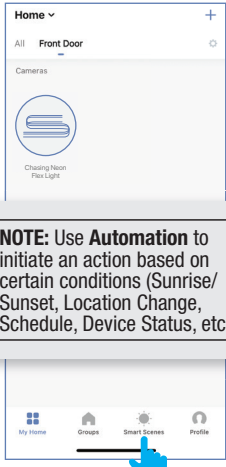


A It will also appear on the top of your **My Home** screen. Tap to execute your action(s).



## Automation

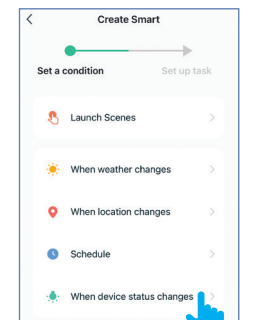
1 From the **My Home** page, tap **Smart Scenes** at the bottom of screen.



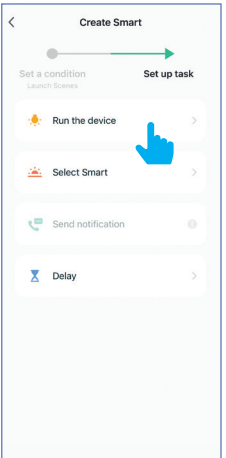
2 Tap **Automation** at the top of the screen, and then tap on plus icon **+**.



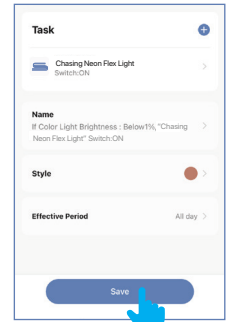
3 Set a condition you would like to trigger.



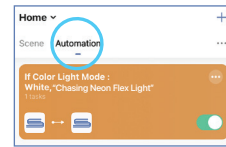
4 Set up a task you would like to automate.



5 Review your automations, edit them if necessary, then **Save**.

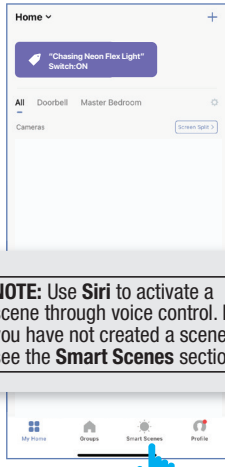


6 Your automation will appear under the **Automation** tab.

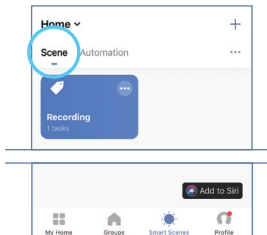


## Enable Siri Shortcuts® (for use with iPhone)

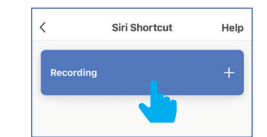
1 From the **My Home** page, tap **Smart Scenes** at the bottom of screen.



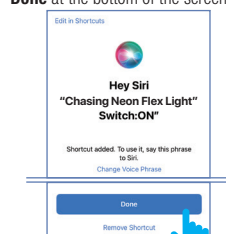
2 In the **Scene** tab, tap **Add to Siri** located at the bottom of the screen.



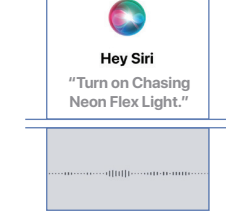
3 In the **Siri Shortcut** screen, tap on the action you would like to add to **Siri**.



4 On the **"Hey Siri"** screen, tap on the device name to edit it. Tap **Done** at the bottom of the screen.

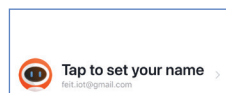


5 Now you can use the **"Hey Siri"** command to control this action from your iOS device. **"Hey Siri, turn on Chasing Neon Flex Light."**

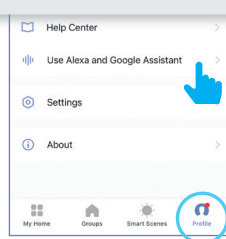


## CONNECT TO ALEXA

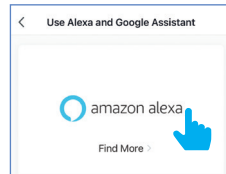
1 Tap on **Profile** at bottom right. Tap on **Use Alexa and Google Assistant**.



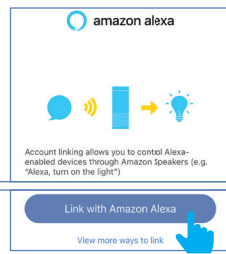
**NOTE:** Sign in to Amazon Alexa. If you do not have an account with Amazon, please create one.



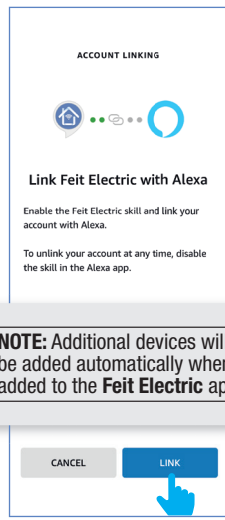
2 Tap on **Amazon Alexa**.



3 Tap on **Link with Amazon Alexa**.

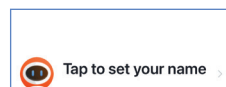


4 Tap on **Link**. You will be linked automatically to your Amazon Alexa app.

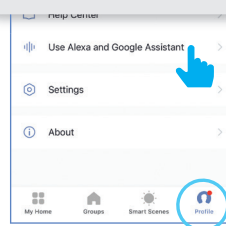


## CONNECT TO GOOGLE ASSISTANT

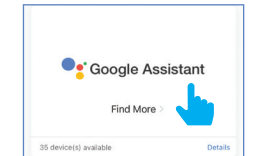
1 Tap on **Profile** bottom right. Tap on **Use Alexa and Google Assistant**.



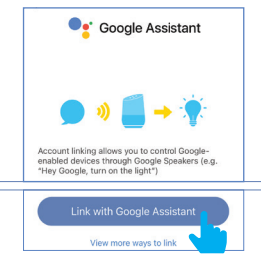
**NOTE:** Sign in to Google Assistant. If you do not have an account with Google, please create one.



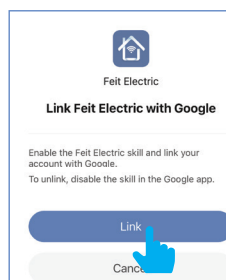
2 Tap on **Google Assistant**.



3 Tap on **Link with Google Assistant**.



4 Tap on **Link**. You will be linked automatically to your Google Assistant app.



**NOTE:** Additional devices will be added automatically when added to the Feit Electric app.

## Need Help?

Please refer to our online resources at [www.feit.com/help](http://www.feit.com/help) to learn about more features & latest updates



[feit.com/help](http://feit.com/help)

