



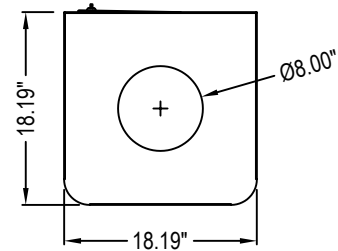
EX-CELL KAISER
 11240 MELROSE AVENUE
 FRANKLIN PARK, IL 60131
 PHONE: (847) 451-0451
 FAX: (847) 261-9448
 www.ex-cell.com

AVAILABLE BODY (LASER CUT GRAPHIC):

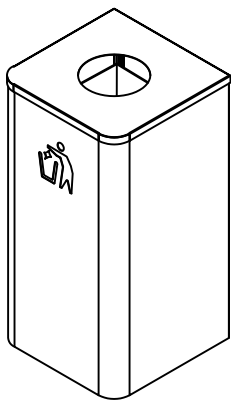
TRASH - LDW-24 SS
 (BLACK BACKING)



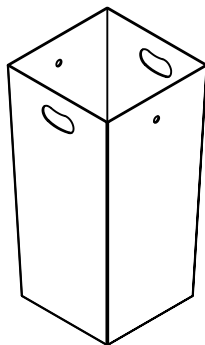
RECYCLING - LDR-24 SS
 (BLUE BACKING)



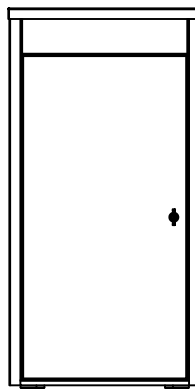
TOP VIEW



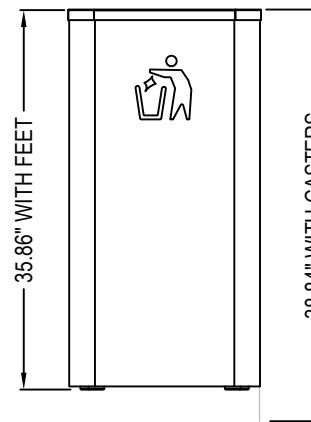
PERSPECTIVE
 24 GALLON RECEPTACLE



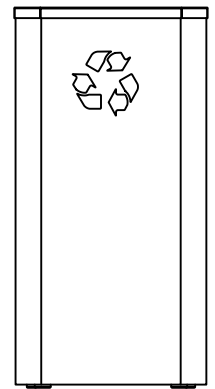
PERSPECTIVE
 24 GALLON LINER



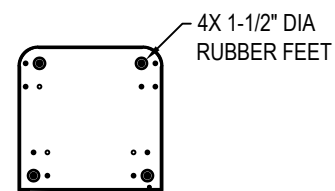
SIDE VIEW



FRONT VIEW
 LDW-24 SS



FRONT VIEW
 LDR-24 SS



BOTTOM VIEW

SPECIFICATIONS:

BODY AND BOTTOM: 18 GA STAINLESS STEEL. COMPLETELY WELDED CONSTRUCTION

LID: 16 GA STAINLESS STEEL

LOCK: 1/4 TURN

WEIGHT: 65 LBS

- CUSTOM LASER CUT ANY WORDING/LOGO

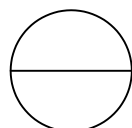
- UL-94 RATED RIGID LEAKPROOF LINER, 24 GALLON CAPACITY. BLACK, LLDPE WITH BAG RETENTION HOLES AND CUT OUT LIFT HANDLE

- UNIT SHIPS WITH 4 RUBBER FEET AND 4 CASTERS - WHICH ARE SCREWED TO BOTTOM OF UNIT. CUSTOMER TO INSTALL.

- REAR ACCESS DOOR ALLOWS FOR EASY SERVICABILITY

NOTES:

1. INSTALLATION TO BE COMPLETED IN ACCORDANCE WITH MANUFACTURER'S SPECIFICATIONS.
2. DO NOT SCALE DRAWING.
3. THIS DRAWING IS INTENDED FOR USE BY ARCHITECTS, ENGINEERS, CONTRACTORS, CONSULTANTS AND DESIGN PROFESSIONALS FOR PLANNING PURPOSES ONLY. THIS DRAWING MAY NOT BE USED FOR CONSTRUCTION.
4. ALL INFORMATION CONTAINED HEREIN WAS CURRENT AT THE TIME OF DEVELOPMENT BUT MUST BE REVIEWED AND APPROVED BY THE PRODUCT MANUFACTURER TO BE CONSIDERED ACCURATE.
5. CONTRACTOR'S NOTE: FOR PRODUCT AND COMPANY INFORMATION VISIT www.CADdetails.com/info AND ENTER REFERENCE NUMBER 5283-056



LIQUIDS DISPOSAL COLLECTION

24 GALLON LIQUIDS DISPOSAL WASTE RECEPTACLE (LDR-24 SS & LDW-24 SS)