

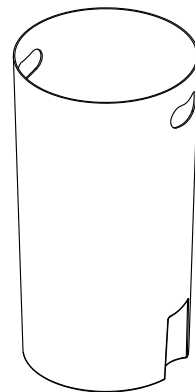
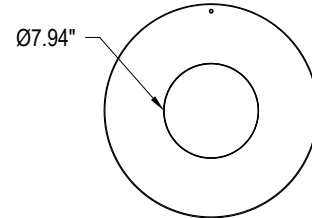


EX-CELL KAISER
 11240 MELROSE AVENUE
 FRANKLIN PARK, IL 60131
 PHONE: (847) 451-0451
 FAX: (847) 261-9448
 www.ex-cell.com

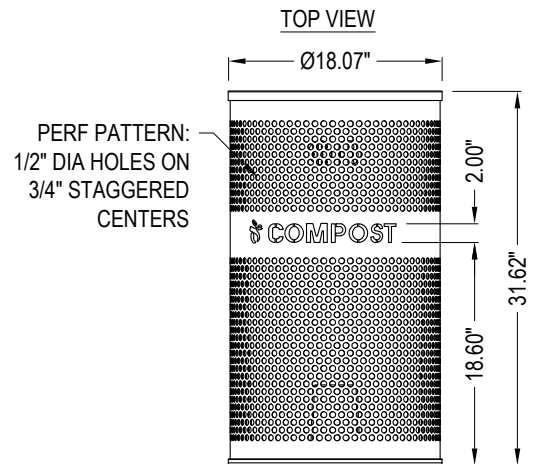
- SELECT DESIRED FINISH:
- POLISHED SS BODY / STEEL PAINTED LID
 - CUSTOM (ANY RAL COLOR MATCH)
- SELECT DESIRED DECAL:
- STANDARD (NONE)
 - CUSTOM (ANY WORDING OR LOGO)



PERSPECTIVE
 33 GALLON RECEPTACLE



PERSPECTIVE
 33 GALLON LINER



FRONT VIEW

POLISHED SS BODY / STEEL PAINTED LID
STANDARD TEXTURED LID: BLACK
STANDARD BODY: POLISHED STAINLESS STEEL

SPECIFICATIONS:

BODY AND BOTTOM: 18 GA T430SS W/ #4 FINISH. COMPLETELY WELDED CONSTRUCTION.

LID: 20 GA STEEL.

- PREPARED IN 5 STAGE PRETREATMENT AND ELECTROSTATICALLY POWDER COATED WITH TGIC POLYESTER POWDER COATING 2-3 MIL THICKNESS. MULTIPLE VARIATIONS.

- UL-94 RATED RIGID LEAKPROOF LINER, 33 GALLON CAPACITY. GREEN, LLDPE WITH BAG RETENTION HOLES AND CUT OUT LIFT HANDLE.

- LID IS ATTACHED TO UNIT WITH A PVC COATED LANYARD CABLE.

- UNIT SITS ON A GASKET ATTACHED TO THE BOTTOM OF UNIT.

NOTES:

1. INSTALLATION TO BE COMPLETED IN ACCORDANCE WITH MANUFACTURER'S SPECIFICATIONS.
2. DO NOT SCALE DRAWING.
3. THIS DRAWING IS INTENDED FOR USE BY ARCHITECTS, ENGINEERS, CONTRACTORS, CONSULTANTS AND DESIGN PROFESSIONALS FOR PLANNING PURPOSES ONLY. THIS DRAWING MAY NOT BE USED FOR CONSTRUCTION.
4. ALL INFORMATION CONTAINED HEREIN WAS CURRENT AT THE TIME OF DEVELOPMENT BUT MUST BE REVIEWED AND APPROVED BY THE PRODUCT MANUFACTURER TO BE CONSIDERED ACCURATE.
5. CONTRACTOR'S NOTE: FOR PRODUCT AND COMPANY INFORMATION VISIT www.CADdetails.com/info AND ENTER REFERENCE NUMBER 5283-049



33 GALLON COMPOST RECEPTACLE WITH GREEN LINER/TOP (VCC-33 PERF SS)