



EX-CELL KAISER
11240 MELROSE AVENUE
FRANKLIN PARK, IL 60131
PHONE: (847) 451-0451
FAX: (847) 261-9448
www.ex-cell.com

☒ SELECT DESIRED FINISH:

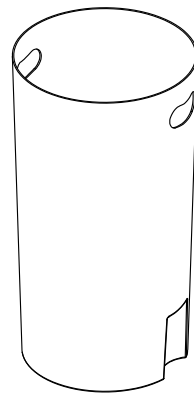
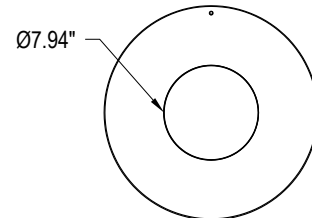
- ☐ POLISHED SS BODY / STEEL PAINTED LID
☐ CUSTOM (ANY RAL COLOR MATCH)

☒ SELECT DESIRED DECAL:

- ☐ STANDARD (NONE)
☐ CUSTOM (ANY WORDING OR LOGO)

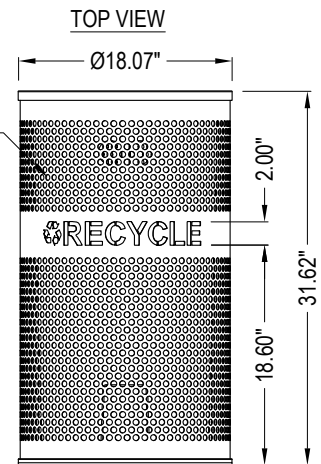


PERSPECTIVE
33 GALLON RECEPTACLE



PERSPECTIVE
33 GALLON LINER

PERF PATTERN:
1/2" DIA HOLES ON
3/4" STAGGERED
CENTERS



FRONT VIEW

POLISHED SS BODY / STEEL PAINTED LID
STANDARD TEXTURED LID: RECYCLE BLUE
STANDARD BODY: POLISHED STAINLESS STEEL
SPECIFICATION:

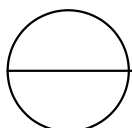
BODY AND BOTTOM: 18 GA T430SS W/ #4 FINISH. COMPLETELY WELDED CONSTRUCTION.

LID: 20 GA STEEL.

- PREPARED IN 5 STAGE PRETREATMENT AND ELECTROSTATICALLY POWDER COATED WITH TGIC POLYESTER POWDER COATING 2-3 MIL THICKNESS. MULTIPLE VARIATIONS.
- UL-94 RATED RIGID LEAKPROOF LINER, 33 GALLON CAPACITY. BLACK, LLDPE WITH BAG RETENTION HOLES AND CUT OUT LIFT HANDLE.
- LID IS ATTACHED TO UNIT WITH A PVC COATED LANYARD CABLE.
- UNIT SITS ON A GASKET ATTACHED TO THE BOTTOM OF UNIT.

NOTES:

1. INSTALLATION TO BE COMPLETED IN ACCORDANCE WITH MANUFACTURER'S SPECIFICATIONS.
2. DO NOT SCALE DRAWING.
3. THIS DRAWING IS INTENDED FOR USE BY ARCHITECTS, ENGINEERS, CONTRACTORS, CONSULTANTS AND DESIGN PROFESSIONALS FOR PLANNING PURPOSES ONLY. THIS DRAWING MAY NOT BE USED FOR CONSTRUCTION.
4. ALL INFORMATION CONTAINED HEREIN WAS CURRENT AT THE TIME OF DEVELOPMENT BUT MUST BE REVIEWED AND APPROVED BY THE PRODUCT MANUFACTURER TO BE CONSIDERED ACCURATE.
5. CONTRACTOR'S NOTE: FOR PRODUCT AND COMPANY INFORMATION VISIT www.CADdetails.com/info AND ENTER REFERENCE NUMBER 5283-031



VENUE COLLECTION

33 GALLON RECYCLING RECEPTACLE (VCR-33 PERF SS)