



FALLTECH[®]

**DROPPED OBJECT
PREVENTION**

FT FOR TOOLS

DROPPED OBJECT PREVENTION



FT for Tools™ enables you to prevent dropped object related injuries. It is a complete system that offers multiple component options to create a dropped object prevention solution to fit your tools and your work applications while enabling you to work efficiently and safely.

Tool Attachments / Tape Measure

Tape Measure Holder attachment fits most large sized tape measures. Provides belt clip for convenience and D-ring for secure attachment. Also has belt loop for dual function as holster when no drop hazards exist.



| Item # | Tape Measure Attachments | Pack Qty. | Max Tool Wt. |
|--------|--------------------------|-----------|--------------|
| 5400A1 | Tape Measure Holder | 1 | 2 lbs. |



Tool Attachments / Battery Boot

Battery Boot attachment fits most cordless power tool batteries, including low profile and high capacity designs. Provides D-ring for secure attachment.



| Item # | Battery Boot Attachments | Pack Qty. | Max Tool Wt. |
|--------|--------------------------|-----------|--------------|
| 5401A1 | Battery Boot | 1 | 6 lbs. |

Tool Attachments / Adhesive

Adhesive Tool Attachment uses industrial grade adhesive pad to secure tools. For use with choke-on wire loop tool attachments.



| Item # | Adhesive Attachments | Pack Qty. | Max Tool Wt. |
|---------|--------------------------|-----------|--------------|
| 5402A10 | Adhesive Tool Attachment | 10 | 2 lbs. |

DROPPED OBJECT PREVENTION



FT for Tools™ enables you to prevent dropped object related injuries. It is a complete system that offers multiple component options to create a dropped object prevention solution to fit your tools and your work applications while enabling you to work efficiently and safely.

Tool Attachments Cold Shrink

Cold Shrink tool attachments require no heat or additional tools to apply. For use with choke-on tool attachments.



| Item # | Adhesive Attachments | Pack Qty. | Max Tool Wt. |
|--------|----------------------|-----------|--------------|
| 5410A5 | Cold Shrink, Small | 5 | 5 lbs. |
| 5411A5 | Cold Shrink, Medium | 5 | 10 lbs. |
| 5412A5 | Cold Shrink, Large | 5 | 15 lbs. |



Tool Attachments Shackle

Shackle tool attachments are designed for tools with existing captive eye connection points. Attach directly with tool tethers or use additional tool attachments.



| Item # | Adhesive Attachments | Pack Qty. | Max Tool Wt. |
|--------|------------------------|-----------|--------------|
| 5420A2 | Shackle, 0.4" x 0.75" | 2 | 15 lbs. |
| 5421A2 | Shackle, 0.5" x 1.0" | 2 | 15 lbs. |
| 5422A2 | Shackle, 0.65" x 1.25" | 2 | 15 lbs. |
| 5423A2 | Shackle, 0.8" x 1.5" | 2 | 15 lbs. |



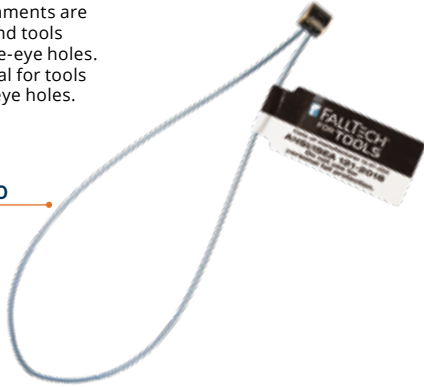
DROPPED OBJECT PREVENTION

FT for Tools™ are designed to help you hold on to your gear and prevent drop injuries to workers at lower levels. Utilized as a tool tethering system of compatible components, a typical assembly may contain a tool attachment, a tool tether, and in some cases a tool anchor. FT for Tools™ provides multiple component options in each of these product groups so you can create tethering solutions to fit your tools and your work applications.

Tool Attachments Choke-on

Choke-on Loop attachments are for connections to hand tools having integral captive-eye holes. Wire rope options ideal for tools with smaller captive-eye holes.

5317A10



| Item # | Choke-on Loop Attachments | Pack Qty. | Max Tool Wt. |
|---------|---------------------------|-----------|--------------|
| 5317A10 | 5½" Choke-on Wire Loop | 10 | 2 lbs. |
| 5317A25 | 5½" Choke-on Wire Loop | 25 | 2 lbs. |

Tool Attachments Swage-lock

Swage-lock Loop attachments are for connections to hand tools having integral captive-eye holes. Wire rope options ideal for tools with smaller captive-eye holes.

5314A10

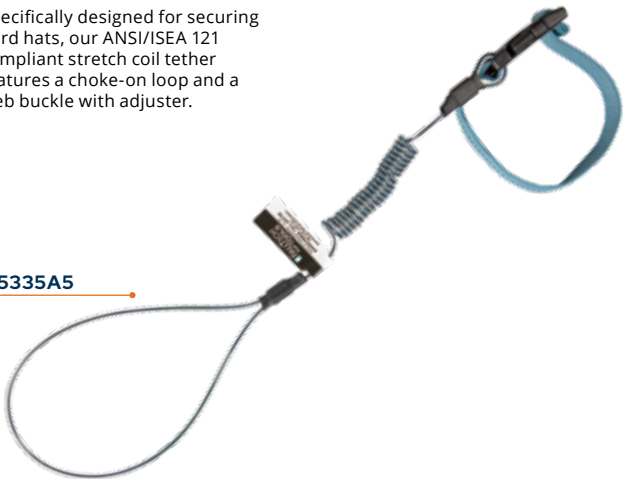


| Item # | Swage-lock Attachments | Pack Qty. | Max Tool Wt. |
|---------|-------------------------|-----------|--------------|
| 5314A10 | 2" Swage-lock Wire Loop | 10 | 3 lbs. |
| 5314A25 | 2" Swage-lock Wire Loop | 25 | 3 lbs. |

Hard Hat Tethers Stretch-coil with Web

Specifically designed for securing hard hats, our ANSI/ISEA 121 compliant stretch coil tether features a choke-on loop and a web buckle with adjuster.

5335A5



| Item # | Hard Hat Tethers | Pack Qty. | Max Wt. |
|---------|--|-----------|---------|
| 5335A5 | ANSI Stretch-coil with Web, Cinch-loop /Web and Adjuster 18" | 5 | 2 lbs. |
| 5335A25 | ANSI Stretch-coil with Web, Cinch-loop/Web and Adjuster 18" | 25 | 2 lbs. |

Tool Tethers Non-Stretch

FallTech® Non-Stretch Web Tool Tethers are designed for securing larger jobsite tools weighing up to 40 lbs. to an appropriately rated anchorage. Options are available with dual swivel aluminum carabiners or choke-loop with swivel aluminum carabiner.

5340A



5340B

| Item # | Non-Stretch Tool Tethers | Pack Qty. | Max Tool Wt. |
|--------|---|-----------|--------------|
| 5340A | Non-stretch, Swivel Aluminum Carabiners, 78" | 1 | 40 lbs. |
| 5340B | Non-stretch, Choke-loop with Swivel Aluminum Carabiner, 78" | 1 | 40 lbs. |

DROPPED OBJECT PREVENTION

FallTech® Premium Tool Tethers include essential features such as swiveling carabiners to prevent tethers from twisting and binding. They are a critical link for safely connecting users and their tools. Available in preferred configurations and constructed with durable, yet smaller diameter woven elastic web, they suit most applications up to 15 lb. maximum tool weight. Options feature choke-on loops paired with swivel aluminum carabiners. Other choices include dual-swivel carabiner models.

Premium Tool Tethers

Stretch-web

5043A1

5065A1

5044A1

5066A1

5061A1



| Item # | Stretch-web Premium Tool Tethers | Pack Qty. | Max Tool Wt. |
|--------|--|-----------|--------------|
| 5043A1 | Premium Tool Tether with Dual Swivel Aluminum Carabiners, 36" | 1 | 5 lbs. |
| 5065A1 | Premium Tool Tether, Choke-on Web-loop with Swivel Aluminum Carabiner, 36" | 1 | 5 lbs. |
| 5044A1 | Premium Tool Tether with Dual Swivel Aluminum Carabiners, 36" | 1 | 15 lbs. |
| 5066A1 | Premium Tool Tether, Choke-on Web-loop with Swivel Aluminum Carabiner, 36" | 1 | 15 lbs. |
| 5061A1 | Premium Tool Tether, Choke-on Cinch-loop with Swivel Aluminum Carabiner, 36" | 1 | 15 lbs. |

DROPPED OBJECT PREVENTION

FT for Tools™ helps you work safely and efficiently with your gear and while preventing drop injuries to workers at lower levels. FallTech Premium Tool Tethers include stretch coil, so they remain close to you and avoid snagging. They feature dual swivel aluminum carabiners and accommodate most uses up to 5 lb. maximum tool weight. Stretch-coil tethers measure 10" fully retracted and can expand to 36" in length as needed.

Premium Tool Tethers / Stretch-coil



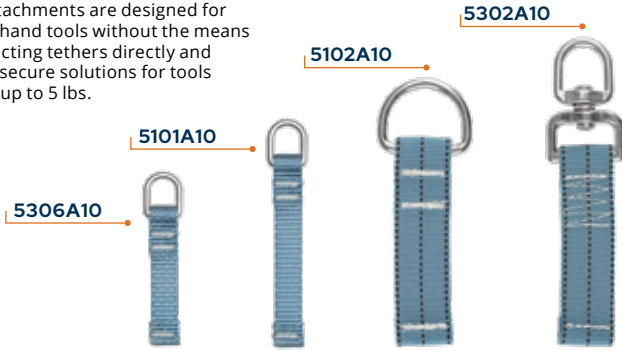
| Item # | Stretch-coil Tool Tethers | Pack Qty. | Max Tool Wt. |
|--------|---|-----------|--------------|
| 5215A1 | Stretch-coil with Dual Swivel Aluminum Carabiners | 1 | 5 lbs. |
| 5215A5 | Stretch-coil with Dual Swivel Aluminum Carabiners | 5 | 5 lbs. |
| 5212A1 | Stretch-coil with Dual Swivel Aluminum Carabiners | 1 | 2 lbs. |
| 5212A5 | Stretch-coil with Dual Swivel Aluminum Carabiners | 5 | 2 lbs. |

DROPPED OBJECT PREVENTION

The FT for Tools™ system enables you to work productively with your tools while preventing drop tool injuries at lower levels. Functioning as a tool tethering system of compatible components, FT for Tools™ includes a tool attachment, a tool tether, and in some cases, a tool anchor. You can create a tethering solution to fit your specific tool and work application.

Tool Attachments / Tape-on

D-ring attachments are designed for common hand tools without the means for connecting tethers directly and to create secure solutions for tools weighing up to 5 lbs.



| Item # | Tape-on Attachments | Pack Qty. | Max Tool Wt. |
|---------|-------------------------|-----------|--------------|
| 5306A10 | D-ring, ½" x 2½" | 10 | 2 lbs. |
| 5101A10 | D-ring, ½" x 3½" | 10 | 2 lbs. |
| 5102A10 | D-ring, 1" x 3½" | 10 | 5 lbs. |
| 5302A10 | Swivel D-ring, 1" x 3½" | 10 | 5 lbs. |

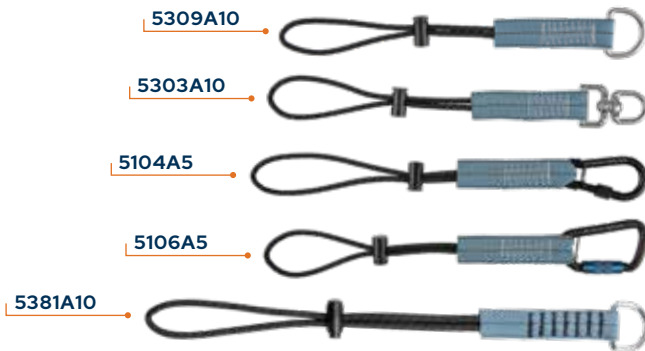
Premium Tool Tape / No-heat

No-heat tool tape is used to secure D-ring attachments to tools up to 5 lbs.; for use with tool tethers and wrist anchors and available in 15' and 30' rolls.



| Item # | No-heat Tool Tape | Pack Qty. | Max Tool Wt. |
|---------|-----------------------------|-----------|--------------|
| 5307A1 | 15' x 1" Premium Tool Tape | 1 | 5 lbs. |
| 5307A10 | 15' x 1" Premium Tool Tape | 10 | 5 lbs. |
| 5308A1 | 30' x 1" Premium Tool Tape" | 1 | 5 lbs. |
| 5308A10 | 30' x 1" Premium Tool Tape | 10 | 5 lbs. |

Tool Attachments / Choke-on



| Item # | Choke-on Loop Attachments | Pack Qty. | Max Tool Wt. |
|---------|---------------------------|-----------|--------------|
| 5309A10 | Standard D-ring, 11" | 10 | 5 lbs. |
| 5303A10 | Swivel D-ring, 11" | 10 | 5 lbs. |
| 5104A5 | Steel Carabiner, 11" | 5 | 5 lbs. |
| 5106A5 | Aluminum Carabiner, 11" | 5 | 5 lbs. |
| 5318A10 | Standard D-ring, 11" | 10 | 15 lbs. |

Tool Attachments / Choke / Tape-on

For larger and heavier hand and power tools with problematic handle sizes, our loop-end attachments utilize combined choke-on and tape-on fastening for tools weighing up to 35 lbs. Tool tape sold separately.



| Item # | Choke-on Loop Attachments | Pack Qty. | Max Tool Wt. |
|--------|-------------------------------|-----------|--------------|
| 5310A1 | Loop-end 13" with support arm | 1 | 35 lbs. |
| 5310A5 | Loop-end 13" with support arm | 5 | 35 lbs. |

DROPPED OBJECT PREVENTION

FT for Tools™ will help you work safely and efficiently with your gear and while preventing drop injuries to workers at lower levels. A typical assembly may contain a tool attachment, a tool tether, and, in some cases, a tool anchor. You can create tethering solutions to fit your specific tool and work application.

Hard Hat Tethers

Stretch Coil / Stretch Web

Specifically designed for securing hard hats, two user-preferred options are available to protect against the drop. Our stretch coil tether features a choke-on loop and snap-clip combination and the stretch web version includes an adjuster paired with a snap-buckle.

5329A5



5330A5

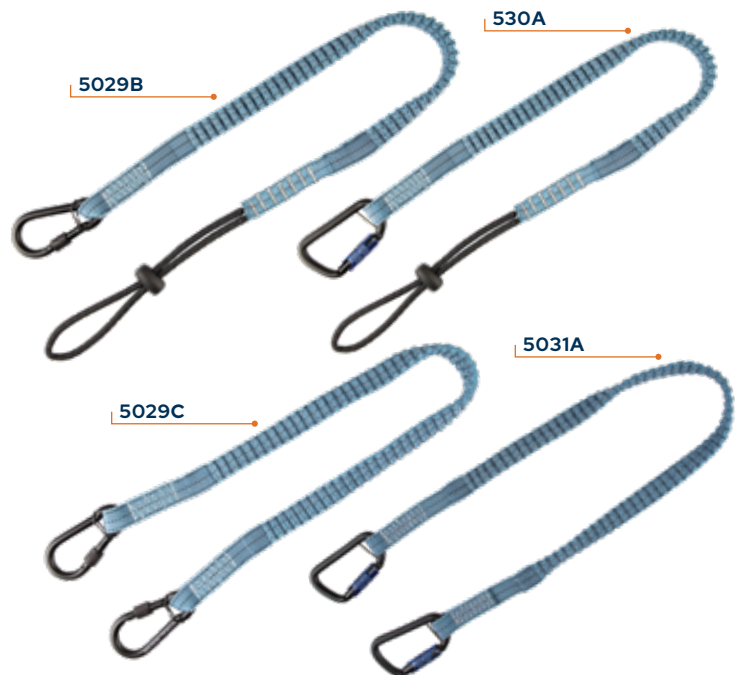
| Item # | Hard Hat Tethers | Pack Qty. | Max Tool Wt. |
|---------|---------------------------------------|-----------|--------------|
| 5329A5 | Stretch coil 18" Cinch-loop/Snap-clip | 5 | 2 lbs. |
| 5329A25 | Stretch coil 18" Cinch-loop/Snap-clip | 25 | 2 lbs. |
| 5330A5 | Stretch Web 25" Adjuster/Snap-buckle | 5 | 2 lbs. |
| 5330A25 | Stretch Web 25" Adjuster/Snap-buckle | 25 | 2 lbs. |

Tool Tethers

Stretch Web

FallTech® Tool Tethers are the critical link for safely connecting users and their tools and are available in preferred configurations to suit most applications up to 15 lb. max. tool weight. All are constructed with woven elastic web and feature either choke-on loops paired with steel screwgate or aluminum twist-lock carabiner options or for added functionality, tethers are also available in dual-carabiner models.

| Item # | Stretch-web Tool Tethers | Pack Qty. | Max Tool Wt. |
|---------|-----------------------------------|-----------|--------------|
| 5029B | Choke-on Loop, Steel Carabiner | 1 | 15 lbs. |
| 5029B10 | Choke-on Loop, Steel Carabiner | 10 | 15 lbs. |
| 5030A | Choke-on Loop, Aluminum Carabiner | 1 | 15 lbs. |
| 5030A10 | Choke-on Loop, Aluminum Carabiner | 10 | 15 lbs. |
| 5029C | Dual Steel Carabiners | 1 | 15 lbs. |
| 5031A | Dual Aluminum Carabiners | 1 | 15 lbs. |



Specifications and Standards

| Component | Type | Total Capacity | Standards |
|------------------|-------------------|------------------------------|--------------------|
| Tool Tape | All | up to 5 lbs. | ANSI/ISEA 121-2018 |
| Tool Attachments | Tape-on, Choke-on | up to 2 lbs. up to 5 lbs. | |
| | Loop-end | up to 35 lbs. | |
| Wrist | Anchor | up to 5 lbs. | |

| Component | Type | Total Capacity | Standards |
|--------------|----------------|----------------|--------------------|
| Tool Tethers | Hard Hat | 2 lbs. | ANSI/ISEA 121-2018 |
| | Speed-clip | up to 5 lbs. | |
| | Choke-on | up to 15 lbs. | |
| | Dual Carabiner | up to 15 lbs. | |

| Component | Type |
|------------|--------------------|
| Webbing | Polyester |
| Carabiners | Steel and Aluminum |

Warnings: The maximum permissible free fall in a tool tethering system is 8 ft. Never tether any tool or equipment to yourself weighing more than 5 lbs. Max.

DROPPED OBJECT PREVENTION

The FallTech® Speed-clip system provides quick tool changes when working at heights while protecting those below you from the hazard of dropped objects. It features multiple compatible components, including tool attachments, wrist attachment anchors, and tool tethers for creating custom solutions for tools weighing up to 5 lbs.

Speed-clip Attachments / Choke-on / Carabiner

Speed-clip attachments are available with choke-on loops, steel screwgate and aluminum twist-lock carabiners for connection to tools with captive-eye holes. All are 11" in length and may be combined with our Speed-clip tethers or wrist attachment anchor.

5027F

5105A5

5107A5



| Item # | Speed-Clip Attachments | Pack Qty. | Max Tool Wt. |
|---------|------------------------------|-----------|--------------|
| 5027F | Choke-on Loop, 1" x 11" | 3 | 5 lbs. |
| 5027F15 | Choke-on Loop, 1" x 11" | 15 | 5 lbs. |
| 5105A5 | Steel Carabiner, 1" x 11" | 5 | 5 lbs. |
| 5107A5 | Aluminum Carabiner, 1" x 11" | 5 | 5 lbs. |

Wrist Attachment Anchor / Speed-clip / D-ring

For interchangeable solutions commonly needed in close proximity work, our Wrist Attachment Anchor features a speed-clip receiver and a steel D-ring to provide multi-function adjustable attachment for speed-clips, carabiners and choke-on loops. Flexible neoprene and elastic with UniFit sizing for tools weighing up to 5 lbs.



5331A1



| Item # | Wrist Attachment Anchor | Pack Qty. | Max Tool Wt. |
|--------|-------------------------------|-----------|--------------|
| 5331A1 | Speed-clip and D-ring, UniFit | 1 | 5 lbs. |
| 5331A5 | Speed-clip and D-ring, UniFit | 5 | 5 lbs. |

Speed-clip Tool Tethers / Choke-on / Carabiner

Our Speed-clip Tool Tethers are designed for versatility as both stand-alone direct-connect tethers and for compatibility within our Speed-clip system in creating solutions to meet your specific needs. Available with elastic choke-on loops and options with steel screwgate and aluminum twist-lock carabiners for tools weighing up to 5 lbs.

5027E

5032A



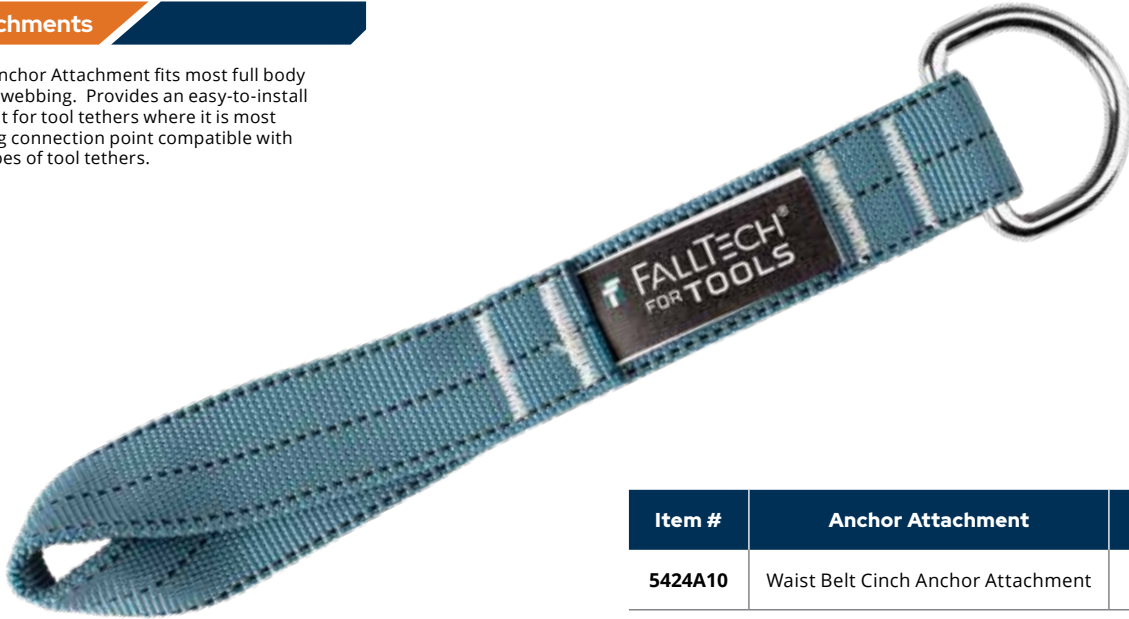
| Item # | Choke-on Loop Attachments | Pack Qty. | Max Tool Wt. |
|--------|-----------------------------------|-----------|--------------|
| 5027E | Choke-on loop, Steel Carabiner | 1 | 5 lbs. |
| 5032A | Choke-on loop, Aluminum Carabiner | 1 | 5 lbs. |

DROPPED OBJECT PREVENTION

FT for Tools™ enables you to prevent dropped object related injuries. It is a complete system that offers multiple component options to create a dropped object prevention solution to fit your tools and your work applications while enabling you to work efficiently and safely.

Anchor Attachments

Waist Belt Cinch Anchor Attachment fits most full body harness belts and webbing. Provides an easy-to-install anchor attachment for tool tethers where it is most convenient. D-ring connection point compatible with many different types of tool tethers.



| Item # | Anchor Attachment | Pack Qty. | Max Tool Wt. |
|---------|------------------------------------|-----------|--------------|
| 5424A10 | Waist Belt Cinch Anchor Attachment | 1 | 5 lbs. |

Tool Tethers

Retractables

Compact design with high strength Dyneema rope reduces clutter or snags and increases productivity. Features dual aluminum self-closing, self-locking carabiners for maximum tool security.



| Item # | Retractable Tool Tether | Pack Qty. | Max Wt. |
|--------|--|-----------|---------|
| 5430A1 | Retractable Tool Tether, Dyneema Rope with Dual Aluminum Carabiners, 48" | 1 | 2 lbs. |

Discover the full selection of all
our fall protection products at
www.falltech.com



Tel / 323.752.0066

Fax / 323.752.5613

**©2021 Alexander Andrew, Inc
1306 S. Alameda St. Compton,
CA. 90221-4803**

Tools shown not included.

Product description and specifications
herein may change without notice.

U.S. and International Patents Pending.

Part #480-00047

