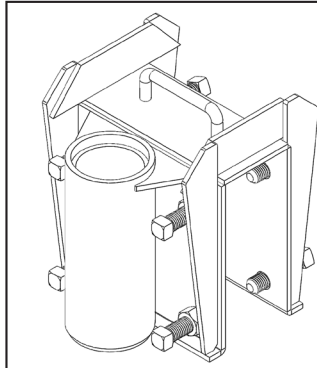


Confined Space Davit Barrel Mount Sleeve

65012F User Instruction Manual



DESCRIPTION:

Allows for bolt-on installations into any existing edges, walls and other structures up to 3.5 in. thick. To be used with the FallTech Davit Arm part numbers, 6500128 and 6500244, and Lower Mast Extension part numbers, 6500321, 6500433, 6500545, and 6500657.

Standard of Conformity: OSHA 1926.502

GENERAL SPECIFICATION

Rated Capacity (Work load): 620 lbs (281 kg)
@ Minimum 4:1 Design Factor
Mast Moment Proof Load: 81,000 in-lbs (9,152 Nm)
Mast Rotation: 180°
Weight: 37 lbs (16.8 kg)
Mounting Bolt Torque: Top Bolts: 70 ft-lbs
Bottom Bolts: 35 ft-lbs

MATERIALS AND CONSTRUCTION

General Construction: Welded Steel
Base-Plate Material: ASTM A36 Steel Plate
Sleeve Insert Material: Sch. 40 Pipe PVC Pipe, STM-D-1785
Finish (Steel): Zinc Plated
Plating Specification (Zinc): ASTM B633-13, Type III, SC2, Yellow

MINIMUM MOUNTING REQUIREMENTS

Wall Thickness: Maximum 3.5 in.

The structure and mounting hardware must be capable of withstanding a 81,000 in-lbs (9,152 Nm) moment and a 5,000 lb (2268 kg) vertical load. Installation MUST comply with local regulation standards and be approved by a Qualified Person before use.

To be used in conjunction with the FallTech Confined Space Davit System only.

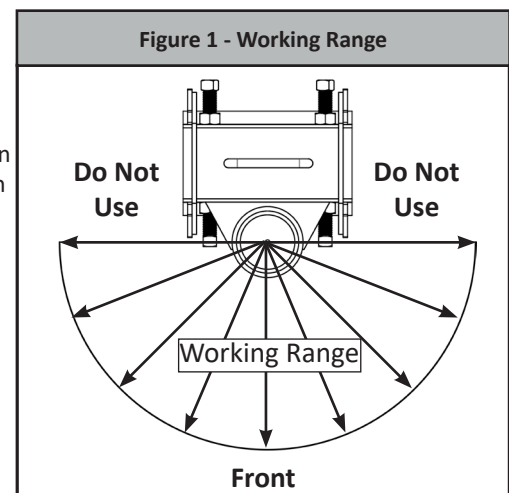
PRE-USE INSPECTION

Inspect the Confined Space Barrel Mount Sleeve thoroughly for damage. Inspection should include, but not be limited to, checking for dents, cracks, deformed or bent tubing, and welded areas for cracks.

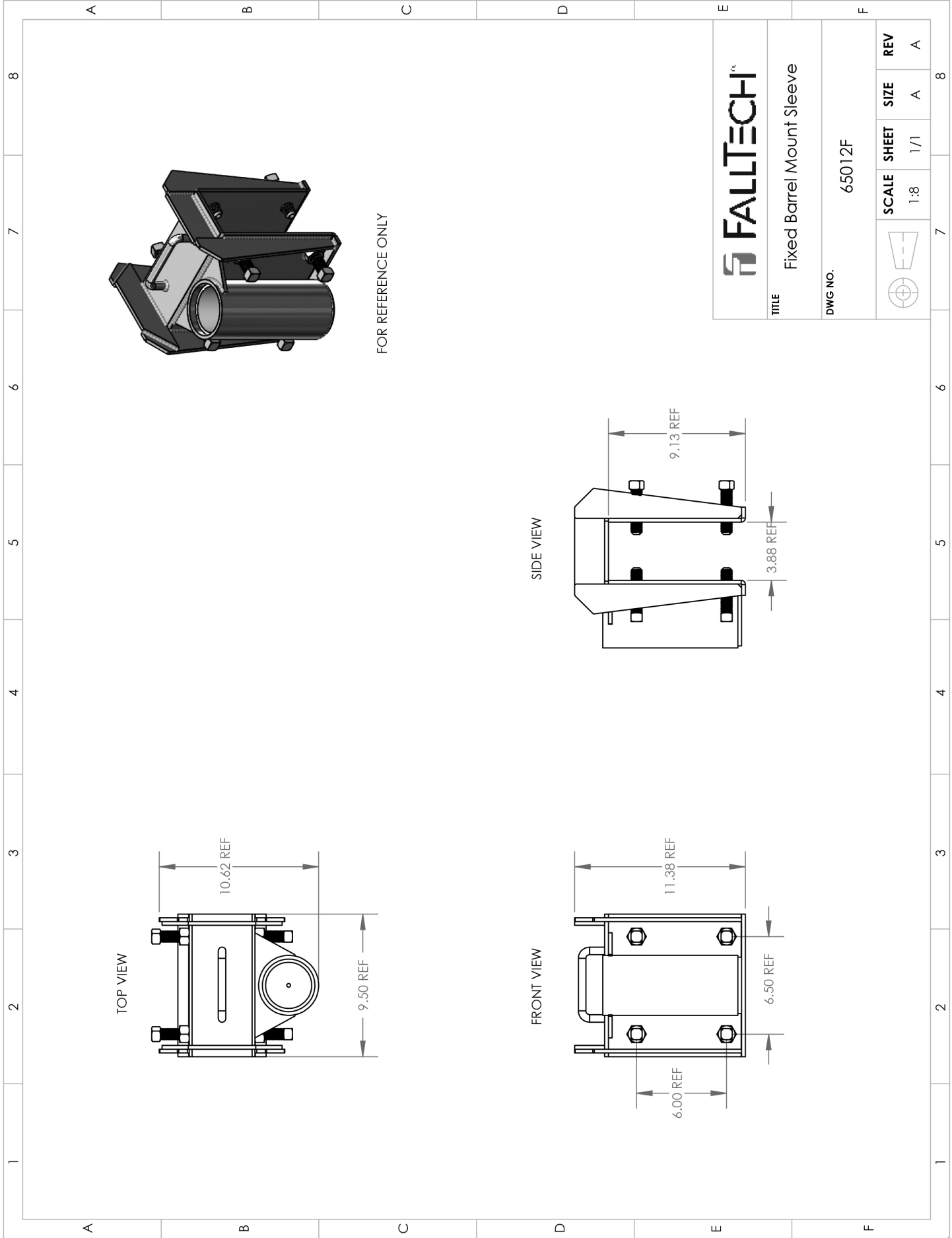
If the Confined Space Barrel Mount Sleeve fails any part of this inspection, remove from service immediately.

APPLICATION RESTRICTIONS:

1. Confined Space Barrel Mount Sleeves are to be used with Davit Arms and Lower Mast Extension manufactured by FallTech ONLY.
2. System design factor depends on other system components and the configuration in which they are assembled. The minimum design factor for all standard FallTech safety system masts and accessories is 4:1.
3. Working range is 90° from the front in each direction of the Barrel Mount Sleeve, see Figure 1.
4. If base material fails to meet minimum requirements, a reinforcement MUST be added in order to meet minimum requirements.
5. Each installation MUST comply with local regulation standards and be approved by a Qualified Person before use.



This manual is intended to meet the Manufacturer's Instructions as required by the American National Standards Institute (ANSI) Z359 and should be used as part of an employee training program as required by the Occupational Safety and Health Administration (OSHA).



TITLE		Fixed Barrel Mount Sleeve	
DWG NO.		65012F	
	SCALE	SHEET	REV
	1:8	1/1	A A