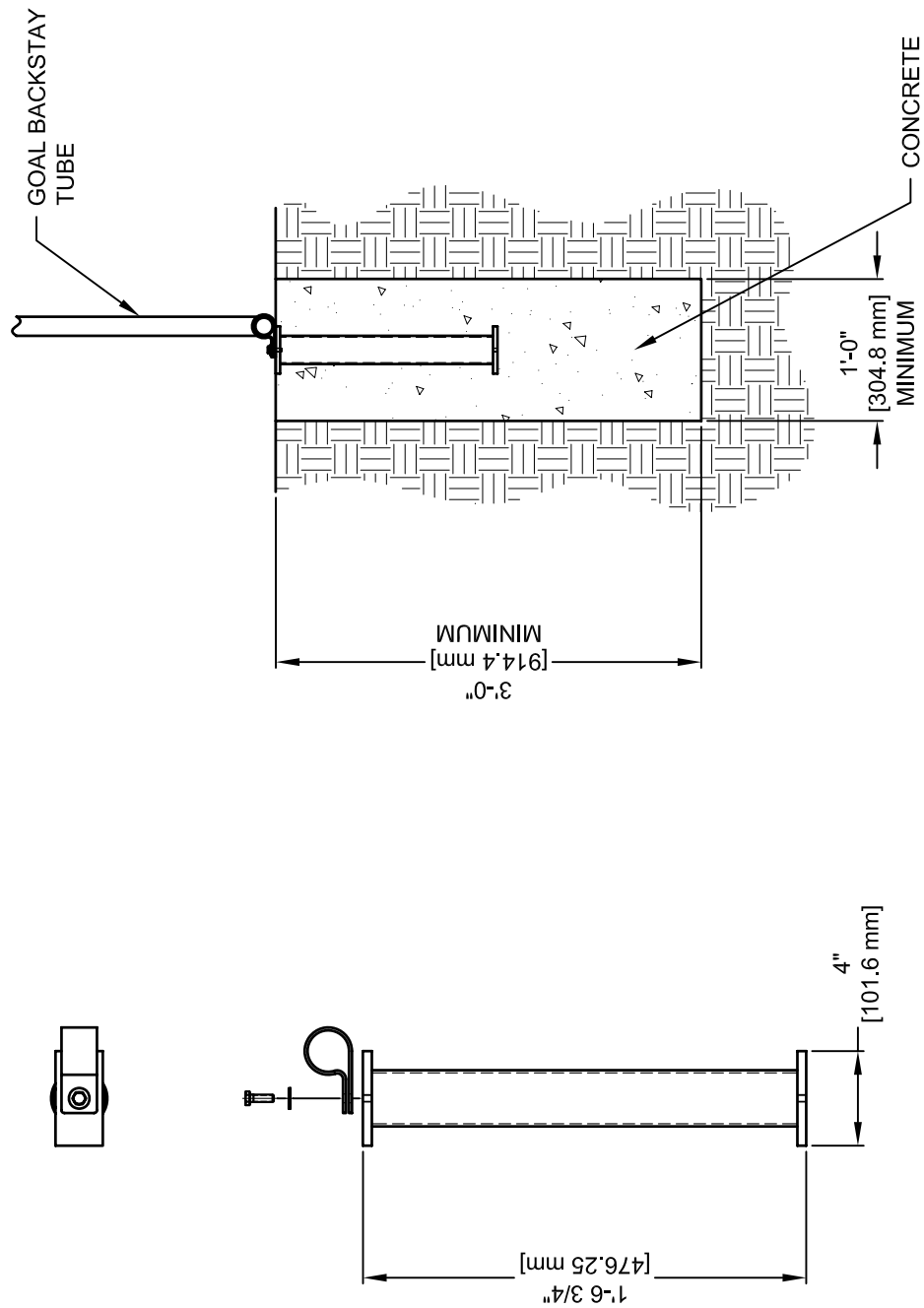


ANCHOR DESIGNED TO FIT ALL GARED PORTABLE SOCCER GOALS. MINIMUM OF TWO ANCHORS REQUIRED PER GOAL.
 ANCHOR AND CLAMP ARE CONSTRUCTED OF HEAVY GAGE GALVANIZED STEEL.
 ANCHORS MUST BE INSTALLED IN A CONCRETE BASE WITH A MINIMUM 12" DIAMETER AND 36" MINIMUM DEPTH.



NOTICE

CONSUMER PRODUCT SAFETY ALERT

From the U.S. Consumer Product Safety Commission, Washington, D.C.

Portable/Moveable Soccer Goals can fall over causing serious injury or death. Securely anchor or counterweight portable goals at ALL times. Check ALL connecting hardware before EVERY use. When goals are not in use: tip goal on face, chain to nearby fence or store in secure area.

REVISION		
REV.	DATE	BY
A	06/02/08	JJC

Gared Holdings, LLC
 9200 E. 146th St. Noblesville, IN 46060

THIS DOCUMENT CONTAINS TRADE SECRET AND OTHER MATERIALS WHICH ARE PROTECTED BY CONFIDENTIALITY NOTICE AND AGREEMENT AND BY COPYRIGHT. ANY USE OR COPYING OF THIS DOCUMENT EXCEPT AS AUTHORIZED BY GARED HOLDINGS, LLC IS STRICTLY PROHIBITED.

SOCCER GOAL UNDERGROUND ANCHOR			
DRAWN	CONNERLEY	DATE	03/20/08
MATERIAL	N/A		
APPROVED	JJC	DATE	03/20/08
FINISH	N/A		
FILE LOC.	Q:\Final Release\Specifications		DWG. NO. SGUA
SIZE	SCALE	SHT. NO.	PART NO.
A	NONE	1 OF 1	
			REV
			A



MODEL SGUA

SOCCER GOAL UNDERGROUND ANCHOR

Soccer goal underground anchor shall be constructed of 2 3/8" O.D. heavy wall galvanized steel tubing at least 18" long. Steel plates welded on each end shall have a tapped hole in the center for anchor bolt. Anchor assembly shall include a strap clamp to fit the backstay tubing of the soccer goal. When installed, the strap clamp shall be connected to the backstay and bolted to the anchor pipe secured in concrete.

Anchor pipe shall be installed in a concrete footing 12" in diameter minimum and 36" deep minimum. Allow sufficient time for concrete to cure before installing goals.

Concrete for installation not included.

***CONSUMER PRODUCT SAFETY ALERT**

From the U.S. Consumer Product Safety Commission, Washington, D.C.

Portable/Movable Soccer Goals can fall over causing serious injury or death. Securely anchor or counter weight portable goals at ALL times. Check ALL connecting hardware before EVERY use. When goals are not in use: tip goal on face, chain to nearby fence or store in secure area.

Subject to design change and current manufacturing practices.
Revised April 4, 2008 ©2008 Gared Holdings, LLC