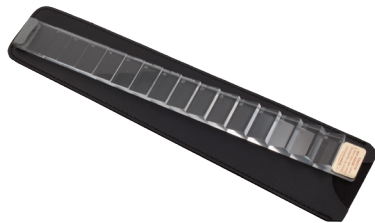




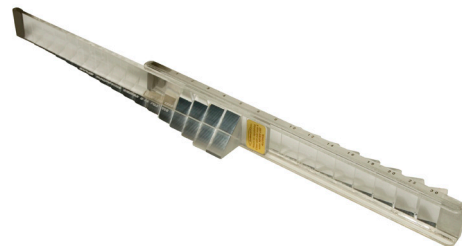
# Prisms: Binocular Vision

Technical Bulletin

Part Number	Description
<b>444600</b>	Horizontal Prism Bar: A 16 segment horizontal prism bar. Comes in a protective sleeve.
<b>444700</b>	Vertical Prism Bar: A 15 segment vertical prism bar. Comes in a protective sleeve.
<b>444800</b>	Combination Prism Bar Set: Comes with a 16 segment horizontal and 15 segment vertical prism bar.
<b>444910</b>	Prism Set with Magnetic Handle (Set of 16): Loose prisms with magnetically attachable handles.
<b>444510</b>	Prism Set with Magnetic Handle (Set of 22): Loose prisms with magnetically attachable handles.
<b>467300</b>	Risley Rotary Prism (20 PD): Rotates thru to 20 PD right-Exo to 20 PD left-Eso.
<b>467400</b>	Risley Rotary Prism (30 PD): Rotates thru to 30 PD right-Exo to 30 PD left-Eso.
<b>583200</b>	Prism Bar Set with Storage Box: Includes a horizontal or vertical prism bar in a foam-lined plastic storage case.
<b>113130</b>	Combination Vertical & Horizontal Prism Bar: A dual-use bar that measures primary and secondary deviations.
<b>444900</b>	Loose Prism Set (Set of 16): 16 prisms for measuring deviation in strabismus.
<b>444500</b>	Loose Prism Set (Set of 22): 22 prisms for measuring deviation in strabismus.
<b>502600</b>	Prism Set in Wooden Box (Empty Box for 22): An empty wooden box fitted for 22 prisms.
<b>567100</b>	Prism Set in Wooden Box (Set for 22): A set of 22 loose prisms in a wooden box.
<b>567200</b>	Prism Set in Wooden Box (Set for 16): A set of 16 loose prisms in a wooden box.
<b>467100</b>	Stainless Steel Stick Prism: 16 prims mounted on stainless steel sticks that come in a metal storage box.



**#444700 - Vertical Prism Bar**



**#113130 - Combination Vertical & Horizontal Prism Bar**



**#444900 & #444500 - Loose Prism Set**



**#467100 - Stainless Steel Stick Prism**