



# Trial Lens Sets

Technical Bulletin



## Trial Lens Set in Traditional Chrome Rims

This trial lens set provides the full complement of 268 lenses packaged in an attractive lockable briefcase. Space is provided for your choice of trial frame sold separately. Standard 38mm lens size.

### **Full Set includes:**

**Sphere lens in Pairs (+/-)** (160 count)—dioptrors as follows: 0.12, 0.25, 0.50, 0.75, 1.00, 1.25, 1.50, 1.75, 2.00, 2.25, 2.50, 2.75, 3.00, 3.25, 3.50, 3.75, 4.00, 4.25, 4.50, 4.75, 5.00, 5.25, 5.50, 5.75, 6.00, 6.50, 7.00, 7.50, 8.00, 8.50, 9.00, 9.50, 10.00, 11.00, 12.00, 13.00, 14.00, 15.00, 16.00, 18.00, 20.00.

**Cylinder lens in Pairs (+/-)** (80 count)—dioptrors as follows: 0.12, 0.25, 0.50, 0.75, 1.00, 1.25, 1.50, 1.75, 2.00, 2.25, 2.50, 2.75, 3.00, 3.25, 3.50, 3.75, 4.00, 4.50, 5.00, 5.50, 6.00.

**Prism lenses** (12 count): Pairs: 0.50. Singles: 1.00, 2.00, 3.00, 4.00, 5.00, 6.00, 7.00, 8.00, 9.00, 10.00.

**Auxiliary Lenses** (16 count): 0.25 and 0.50 (+/-) Jackson Cross Cylinder, Singles: Red Lens, Green Lens, Occluder, 1.00 mm Slit, Polariscope, Frosted. Pairs: Maddox, Plano, Cross, Pinhole.

Case Dimensions: Briefcase LxWxH - 23 1/2 x 14 1/2 x 2 7/8 inches (59.7 x 36.8 x 7.3 cm) including handle.

Removeable Insert LxWxH - 21 1/16 x 12 3/8 x 1 7/8 ( 53.5 x 31.4 x 4.8 cm) Insert is 1 3/8 (3.5 cm) without lenses.

**449300** - Full Trial Lens Set with Case



## Trial Lens Set with Red and Black Rims - Ophthalmology

This trial lens set provides the same list of 268 lenses. These are packaged in an attractive lockable briefcase, however, rims are plated for quick identification. The Red = minus, Black = plus. Also includes case, Prisms and accessory lenses. Space is provided for your choice of trial frame. Case and insert dimensions are identical to 449300 above.

**592000** - Full Trial Lens Set with Red (-) and Black (+) Rims



# Trial Lens Sets

Technical Bulletin



## **Perimeter Trial Lens Set**

Perimeter Trial Lens Set provides the key values of spheres and cylinders needed for use with your perimeter instruments. Each set contains 28 plus and 28 minus spheres from 0.25 to 16.00 and 12 plus (or choose plus cylinders) cylinders from 0.25 to 5.00.

Available as either minus or plus cylinders lens set.

**685900** - Plus Set

**686000** - Minus Set



## **Trial Lens Holders**

Easily use your existing trial lenses with these handheld Trial Ring Holders. Made of sturdy black plastic for long lasting durability.

**151440** - 4 Well Holder

**151460** - 10 Well Holder

**532300** - 8 Well Holder with 2 lens holder with axis scale

**151560** - 8 Well Raff Level Holder

**151441** - 4 Well Holder with Scale



# Trial Lens Sets

Technical Bulletin

## Trial Lens Set Accessories

### Occluders, Pinholes and Prisms in Trial Rings



**532400** - Black Occluder

**532500** - Black with 1mm Pinhole

**532600** - Black with 1.5mm Pinhole

**532700** - Black with 1mm by 23mm Slit

**532800** - Black with 1mm by 5mm Cross Pattern

**532900** - Black with 13 1.5mm Pinholes

**533000** - Clear Lens with Etched Cross Pattern

**533100** - Frosted Occluder

**346700** - Bagolini Lenses in Trial Lens Ring

### Maddox and Filters for Trial Frames

Maddox lenses mounted in trial rings. Available as a set with White, Red or Green or individually. Note choices of orientation below.



**484800** - Maddox Set Oriented 90° to Handle

**473000** - Maddox Red Oriented 90° to Handle

**473100** - Maddox green Oriented 90° to Handle

**473200** - Maddox White Oriented 90° to Handle

**501200** - Maddox Red Oriented 45° to Handle

**501300** - Maddox Green Oriented 45° to Handle

**501400** - Maddox White Oriented 45° to Handle

#### **Filter Only:**

**526000** - Red Filter in Trial Ring

**526100** - Green Filter in Trial Ring

Maddox in Trial Rings with with saw kerf index mark at top of Maddox lines and Maddox lines oriented 45 degrees from center of handle.

**556100** - Maddox Red with Saw Kerf at Top 45° to Handle

**556200** - Maddox Green with Saw Kerf at Top 45° to Handle

**526300** - Maddox White with Saw Kerf at Top 45° to Handle



### Mount Your Own Trial Lens Rims

These empty rims are for use in mounting your own trial frame lenses. For standard 38 mm lenses.

**464000** - Empty Trial Lens Rims

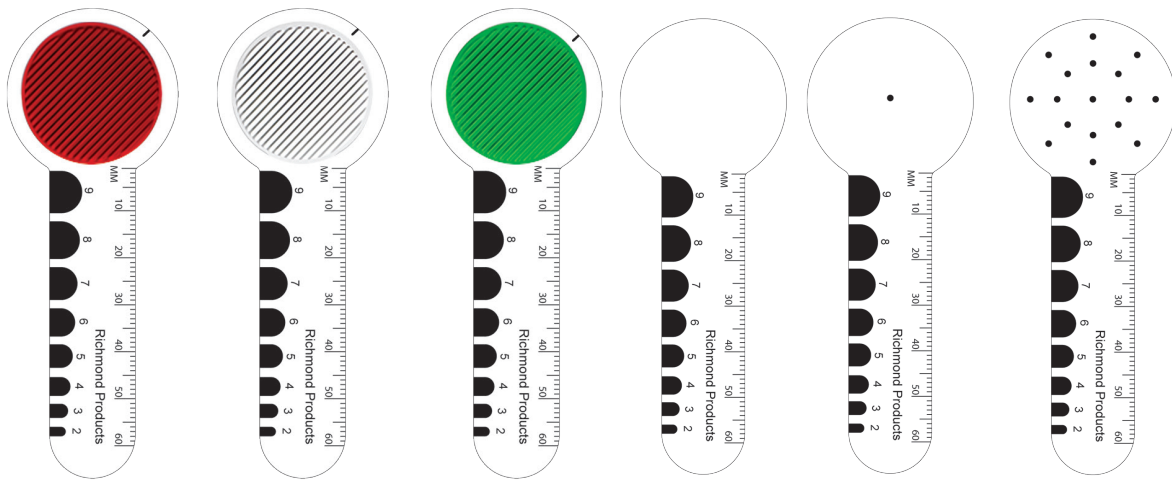




# Trial Lens Sets

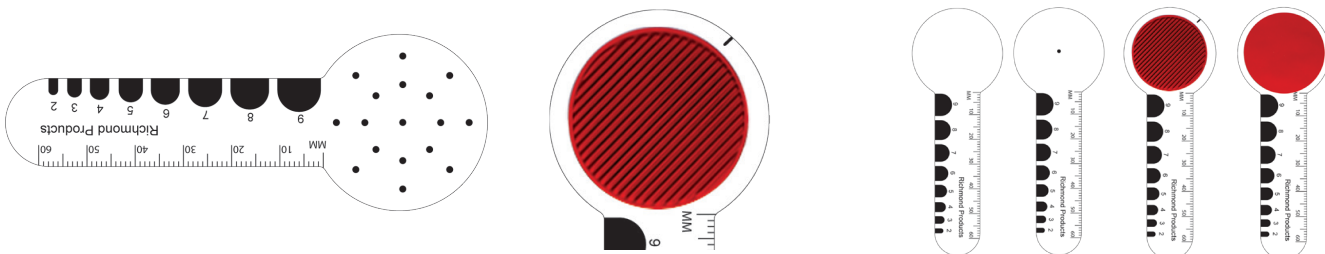
Technical Bulletin

## Four Inch Mini Occluder Family



Ideal to carry in your pocket, for Rounds, Nursing Homes or other 'on the go' situations with choice of occluding, Pinhole (single or 17 holes), Maddox or Red Filter for Neuro. Printed with half moon pupilometer to the edge with 8 sizes: 2 mm to 9 mm. Plus 6 cm Ruler. Easily fit in a trial frame. White Styrene cleans up easily with alcohol. Your choice of Maddox Rod in Red, Green or White (clear) enables Double Maddox testing or just insures easy identification of which Maddox is yours. Maddox Rods are set at 45 degrees from handle to afford a simple flip to change from a horizontal line (viewed by the patient) to a vertical line. Maddox orientation indicated by small notch in outer edge of handle. This new Mini-Occluder family joins our full line of occluders, pinholes, Maddox Rods and filters available in standard 10 inch, short 7 inch, double ended, and 38 mm trial frame mounted.

The Mini Occluder Family is available as a set of 4 or individually. The Set includes the occluder, 17 pinhole, Red Maddox (with notch indicator) and Red Filter in a storage box.



Four inch (10 cm) Mini Occluder with 17 pinholes

Red Maddox with notch to indicate alignment of 'lines'

Set includes the occluder, 17 pinhole, Red Maddox and Red filter

Part Number	Description
<b>609100</b>	Set of 4 inch with Occluders, 17 Pinhole, Red Filter and Red maddox
<b>605700</b>	Four inch Occluder, white, printed with Pupilometer and mm Ruler
<b>605800</b>	Four inch Single Pinhole Occluder, 1.5 mm pinhole, printed with Pupilometer and mm Ruler
<b>605900</b>	Four inch 17 Pinhole Occluder, 1.5 mm pinholes, printed with Pupilometer and mm Ruler
<b>606000</b>	Four inch Red Maddox, printed with Pupilometer and mm Ruler
<b>607300</b>	Four inch Green Maddox, printed with Pupilometer and mm Ruler
<b>607400</b>	Four inch White Maddox, white, printed Pupilometer and mm Ruler
<b>608200</b>	Four inch Red Filter, white, printed with Pupilometer and mm Ruler



# Trial Lens Sets

Technical Bulletin

---



## Missing Some Trial Lenses? We can help!

We offer individual Trial Lenses with Chrome Rims. We can help you fill in any missing lenses in your set. Call or e-mail a list of the powers you need and we'll send a quote.

Or you can visit our web site for a complete listing.

If your set does not use chrome rims, tell us what type of mounting you need and we'll see if we can provide lenses in the rims to your specs.

We also offer empty chrome rims if you have particular requirements you want to mount special lenses.