

PRODUCT INFORMATION PACKET



Model No: B2853V1
Catalog No: B2853V1
MODEL-CFHP-56FR
Pool Pump Motors



Regal and Century are trademarks of Regal Rexnord Corporation or one of its affiliated companies.
©2021 Regal Rexnord Corporation, All Rights Reserved. MC017097E





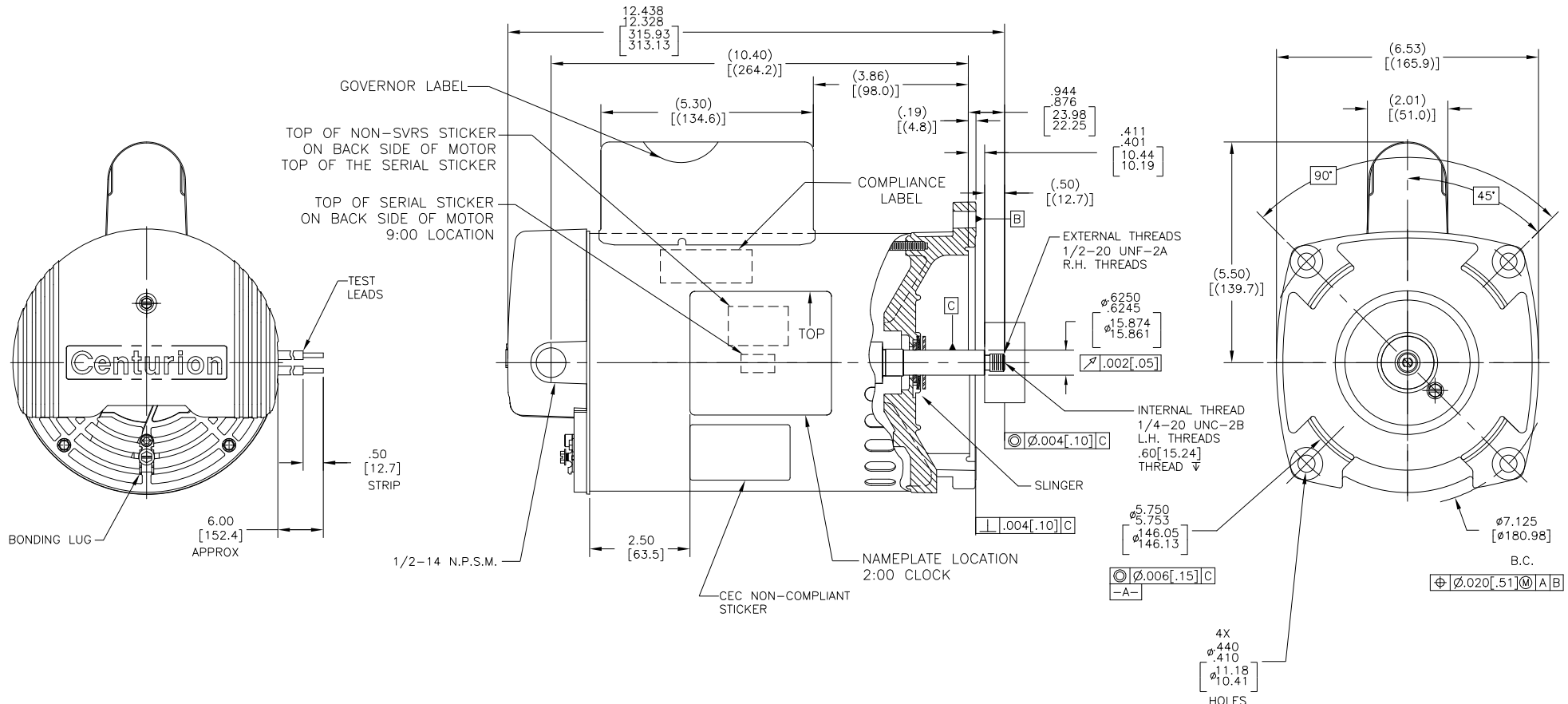
Nameplate Specifications

Output HP	1.0 Hp	Output KW	0.75 kW
Frequency	60 Hz	Voltage	230/115 V
Current	SF 6.5/13.0 A	Speed	3450 rpm
Service Factor	1.25	Phase	1
Duty	Continuous	Insulation Class	F
Frame	P56Y	Enclosure	Drip Proof
Thermal Protection	Thermally Protected	Ambient Temperature	50 °C
UL	Recognized	CSA	Y

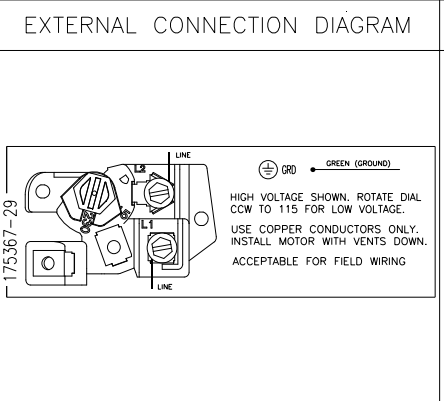
Technical Specifications

Electrical Type	Permanent Split Capacitor, Single Or Dual Voltage	Poles	2
Rotation	Counterclockwise Pump End	Mounting	Round
Motor Orientation	Horizontal	Drive End Bearing	Ball
Opp Drive End Bearing	Ball	Frame Material	Rolled Steel
Shaft Type	1/2 Threaded	Overall Length	12.44 in
Frame Length	8.00 in	Shaft Diameter	0.625 in
Shaft Extension	.910 in		
Outline Drawing	B2853V1-S01	Connection Drawing	17536729.PCX

This is an uncontrolled document once printed or downloaded and is subject to change without notice. Date Created:10/07/2021



NAMEPLATE DATA	
MODEL: F56AB45Z01	CUST PN: B2853V1
HP: 1.0	SF: 1.25
ROT: CW	
RPM: 3450	
TYPE: CX	CODE: L
FORM:	FRAME: P 56 Y
VOLTS: 230/115	
AMPS:	
MAX AMPS:	
SF AMPS: SF 6.5/13.0	
PH: 1	HZ: 60
INS: F	AMB: 50°C
DUTY: CONT	
ENCLOSURE: DP	
THERMALLY PROTECTED	



- NOTES
- FOR THREADED SHAFT EXT. ECCENTRICITY OF THREADED PORTION OF SHAFT IS HELD WITHIN .004[.102] TOTAL GAGE READING WITH THE INDICATOR ON O.D. OF GROUND RING GAGE AS SHOWN. THE GAGE BEING STATIONARY WITH RESPECT TO THE ROTOR.
 - END PLAY NOT TO EXCEED .010[.254] MEASURED WITH NO THRUST.
 - ALL DIMENSIONS SHOWN IN PARENTHESIS ARE REFERENCE DIMENSIONS.
 - FINISH PAINT TO BE BLACK.
 - 1.24 SF HP
 - CONNECTED FOR 230V.DUAL VOLTS MOTOR SEE CONNECTION DIAGRAM TO CHANGE VOLTS TO 115V. THRUST.
 - CTQ REQUIREMENT SEE EP000105-008
 - RoHS & REACH REQUIREMENT SEE EP000014.

PERFORMANCE CURVE		APPROVED SAMPLE	
SS0097396		---	
UL COMPONENT		CSA	
FILE#	CCN#	FILE#	GUIDE#
E25022	XEWR2/8	LR4642	4211-0
CUSTOMER	DISTRIBUTION		

CRITICAL TO QUALITY CHARACTERISTICS(CTQs)	DRAWING REVISION	REVISION BY	DATE	TOLERANCES UNLESS OTHERWISE SPECIFIED	DRAWN BY:
(P) PROCESS	E	HAIKUA ZHANG	07-02-2021	DEC. INCH mm ANGLE	Y.LIU
(E) ENGINEERING	ECR-0210627	TRISTIA.ZHAO	07-02-2021	.X ±0.1 [±3]	DATE: 03-15-2016
(A) APPLICATION				.XX ±0.02 [±0.5]	APPROVED BY: B.SHEN
(R) REGULATORY				.XXX ±0.005 [±0.13]	DATE: 03-15-2016
(L) LIFE				.XXXX ±0.0005 [±0.013]	REFERENCE
				REMOVE BURRS & BREAK SHARP EDGES .003/.015 [08.38]	MATERIAL
				CORNER FILLETS .02 [5]	PROCESS/FINISH
				MACHINED SURFACES .125 INCH mm 3/2	SIZE DWG NO
				mm SHOWN IN [BRACKETS]	B2853V1
					SHEET 1

REGAL Beloit America, Inc.

MODEL-CFHP-56FR OUTLINE

THIRD ANGLE PROJECTION

FILE#	CCN#	FILE#	GUIDE#
E25022	XEWR2/8	LR4642	4211-0