



411-9100



411-9110



411-9120



411-9130



411-9140



411-9150



411-9210



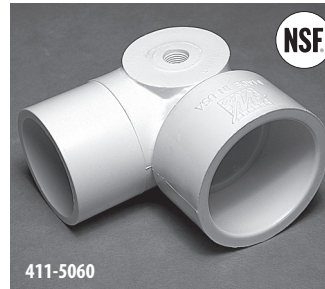
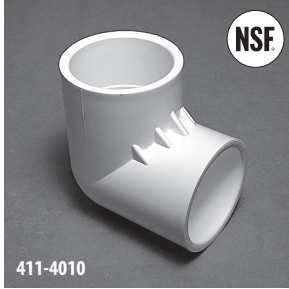
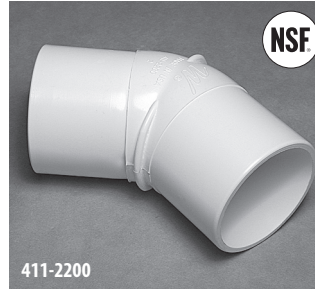
411-9200

Sweep Ells

Part No.	Description	NSF Approved	Case Weight	Case Quantity	List (US \$)
411-9100	1 1/2" Spigot x 1 1/2" S	x	7.15 lbs.	25	4.97
411-9110	1 1/2" S x 1 1/2" S	x	6.65 lbs.	25	4.97
411-9120	2" Spigot x 2" S	x	31.55 lbs.	70	5.68
411-9130	2" S x 2" S	x	27.89 lbs.	60	5.68
411-9140	2 1/2" Spigot x 2 1/2" S	x	26.4 lbs.	30	9.04
411-9150	2 1/2" S x 2 1/2" S	x	26.9 lbs.	30	9.04
411-9200	3" S x 3" S	x	25.59 lbs.	20	14.06
411-9210	3" S x 3" Spigot	x	25.59 lbs.	20	14.06

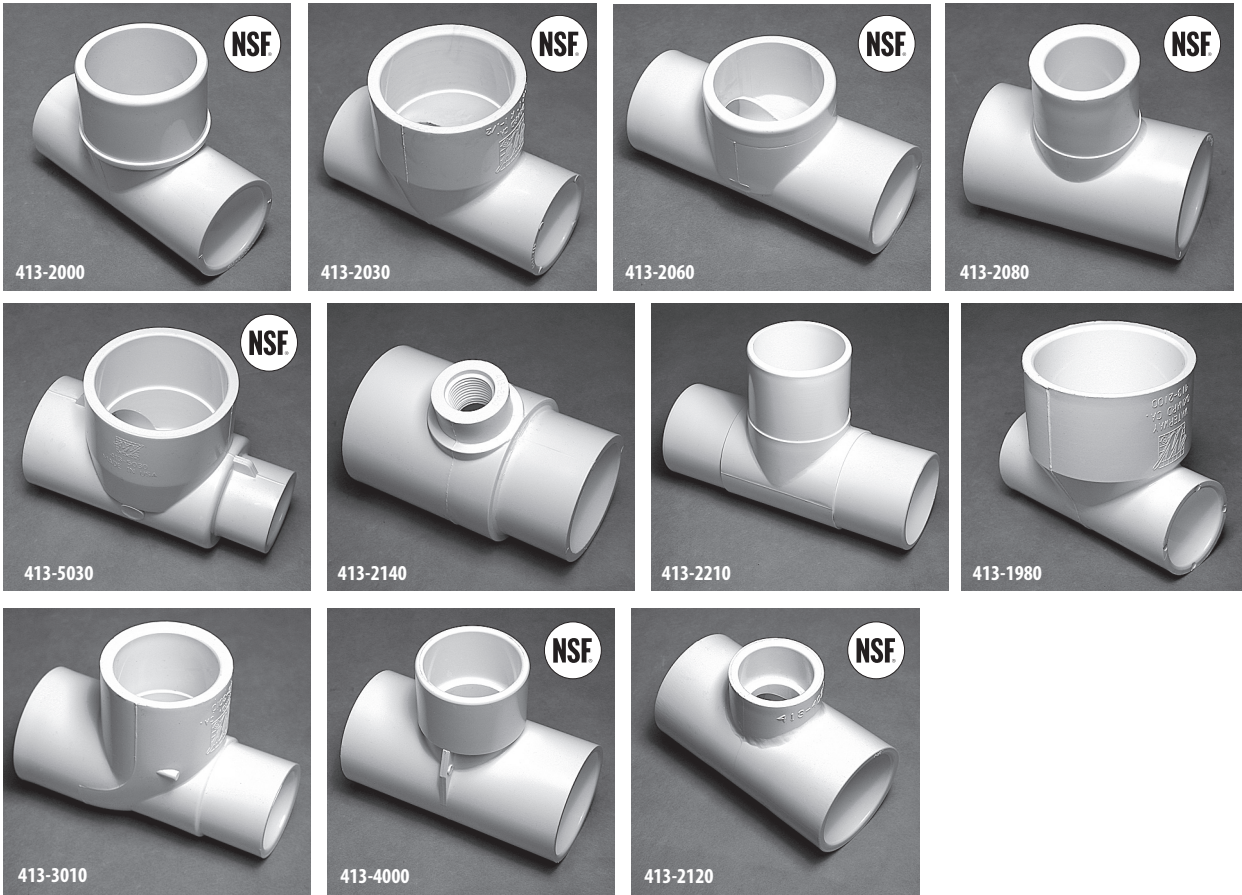


Ells, Tees, & Wyes / 45° and 90° Ells



45° and 90° Ells

Part No.	Description	NSF Approved	Case Quantity	List (US \$)
411-2020	45° Street Ell – 1" S x 1" Spigot	x	50	3.24
411-4040	45° Street Ell – 1 1/2" S x 1 1/2" Spigot		140	4.32
411-5030	45° Street Ell – 2" S x 2" Spigot		90	5.39
411-2010	45° Ell – 1" S x 1" S	x	150	3.17
411-2200	45° Ell – 2" Spigot x 2" Spigot	x	80	5.68
411-2000	90° Street Ell – 1" S x 1" Spigot	x	50	2.22
411-4000	90° Street Ell – 1 1/2" S x 1 1/2" Spigot		130	3.76
411-5080	90° Street Ell – 2" S x 2" Spigot		70	4.83
411-4010	90° Ell – 1 1/2" S x 1 1/2" S	x	50	2.43
411-5040	90° Street Ell – 2" S x 2" Spigot x 1/2" FPT Left Side Outlet	x	60	9.43
411-5050	90° Street Ell – 2" S x 2" Spigot x 3/8" FPT Left Side Outlet		25	9.43
411-5550	90° Ell – 1 1/2" Spigot x 1 1/2" Spigot	x	50	3.76
411-2100	90° Ell – 2" Spigot x 2" Spigot	x	60	5.39
411-4050	90° Ell – 1 1/2" S x 1 1/2" Spigot x 1" S Side Outlet	x	25	5.39
411-5060	90° Street Ell – 1 1/2" S x 1 1/2" Spigot x 1/8" FPT Side Outlet	x	50	6.75
411-4080	90° Street Ell – 1 1/2" S x 1 1/2" Spigot x 1/2" S Outlet	x	50	5.25
411-9170	Ell - 2" S x 2" S x 3/4" SB		50	8.04
411-9180	Ell - 2 1/2" S x 2 1/2" S x 3/4" SB		30	10.30



Tees

Part No.	Description	NSF Approved	Case Quantity	List (US \$)
413-2000	1" S x 1" S x 1 1/2" Spigot	x	50	4.04
413-2030	1" S x 1" S x 1 1/2" S	x	140	4.04
413-2060	Low Profile - 1" S x 1" S x 1 1/2" Spigot	x	50	4.59
413-2080	1" S x 1" S x 1" Spigot	x	100	2.18
413-5030	2" S x 1 1/2" S x 1" S	x	70	6.81
413-2140	2" S x 2" Spigot x 1/2" FPT		25	7.28
413-2180	2" Spigot x 2" S x 3/8" Air Bleed		75	7.06
413-2130	2" S x 2" Spigot x 3/4" FPT		75	7.28
413-2210	2" Spigot x 2" Spigot x 2" Spigot		40	6.78
413-1980	Reducer - 1/2" S x 1/2" S x 1" S		100	2.18
413-3010	Reducer - 1" S x 1" S x 1" Spigot / 3/4" S		50	2.56
413-4000	1 1/2" S x 1 1/2" S x 1 1/2" Spigot	x	90	5.57
413-2150	2" Spigot x 2" S x 1/2" S		75	5.42
413-2120	2" Spigot x 2" Spigot x 1" S	x	90	6.33
413-2090	1 1/4" S x 1 1/4" S x 1 1/2" Spigot		100	5.39



Ells, Tees, & Wyes / Sanitary Tee, Cross Tee, and Tee Assemblies



413-2320

Sanitary Tee

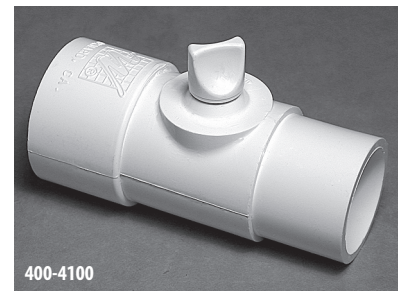
Part No.	Description	Case Quantity	List (US \$)
413-2320	2 1/2" x 2 1/2" x 2 1/2"	15	16.59



413-1770

Cross Tee

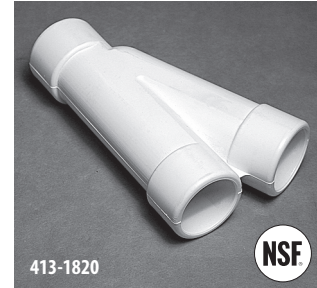
Part No.	Description	NSF Approved	Case Quantity	List (US \$)
413-1770	Cross Tee - 1 1/2" S x 3/4" S x 3/4" S x 3/4" S	x	50	78.18



400-4100

Tee Assemblies

Part No.	Description	Case Quantity	List (US \$)
400-4100	Tee Assembly with Relief Plug 1 1/2" S x 1 1/2" Spigot x 3/8" FPT	100	8.49
400-4260	Tee Assembly with Relief Plug 2" Spigot x 2" S x 3/8" FPT with O-Ring	70	8.81

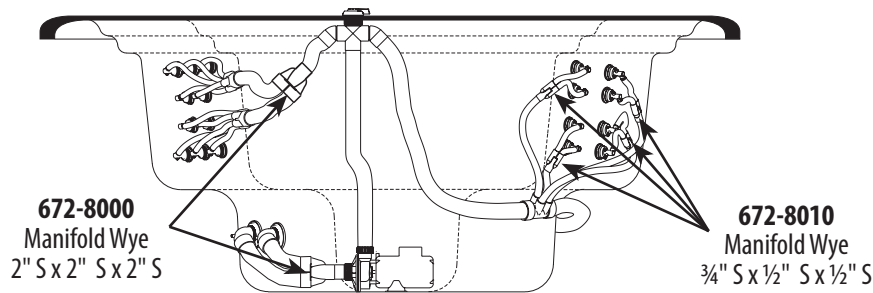
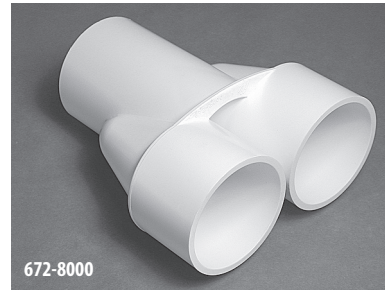
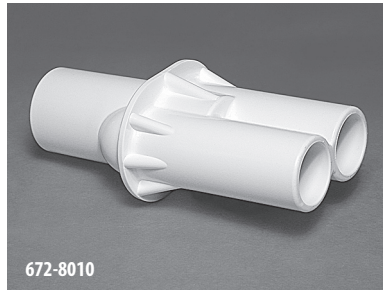


Wyes

Part No.	Description	NSF Approved	Case Quantity	List (US \$)
413-1810	120° Wye - 3/4" S x 3/4" S x 3/4" S	x	50	5.39
413-4160	120° Wye - 1" S x 1" S x 1" S		100	5.39
413-4100	120° Wye - 1 1/2" S x 1 1/2" S x 1 1/2" S		70	8.12
413-5080	120° Wye - 2" S x 2" S x 2" S		50	11.32
413-5040	120° Wye - 2" S x 1 1/2" S x 1 1/2" S	x	50	11.32
413-4130	120° Wye - 1 1/2" S x 1" S x 1" S	x	140	7.28
413-1820	22 1/2° Wye - 3/4" S x 3/4" S x 3/4" S	x	50	5.05
413-2020	22 1/2° Wye - 1" S x 1" S x 1" S		120	5.39
413-4140	22 1/2° Wye - 1 1/2" S x 1" S x 1" S		90	6.15

FEATURES:

- Improves performance
- Saves plumbing cost
- Makes plumbing easier
- Available in two different sizes
- Made of fitting grade type 1 PVC
- Made in the USA



Manifold Wyes

Part No.	Description	Case Quantity	List (US \$)
672-8010	3/4" S x 1/2" S x 1/2" S	220	3.61
672-8020	1" S x 3/4" S x 3/4" S	180	3.61
672-8040	1 1/2" S x 1 1/2" S x 1 1/2" S	50	8.22
672-8000	2" S x 2" S x 2" S	30	11.29
672-8050	2 1/2" S x 2 1/2" S x 2 1/2" S	20	9.75