

PIPELINE PUMPS® 1.5 HORSEPOWER PUMP



High-Efficiency Full-Featured Pumps

For pump performance curve and specifications please scan the QR code



FEATURES

Permanent Magnet Motor (PMM) drive system

Total Enclosed Fan Cool (TEFC)

Four programmable speeds from 800 to 3400 RPM

Noise reduction vibration dampening rubber insert

Base model does not include WiFi compatibility or RS485 communication port. Smart model includes WiFi compatibility and RS485 communication port

Includes communication cable

RS485 communication port compatible with Hayward®, Jandy® and Pentair® controllers

Automation capability programmable start and stop times

Integrated 2½" and 2" (socket) pump union connection

Ergonomic lid handles with quick-release quarter-turn 4-point locking lid

High-capacity self-aligning HDPE ultra-durable basket

High-efficiency volute design

1 per case

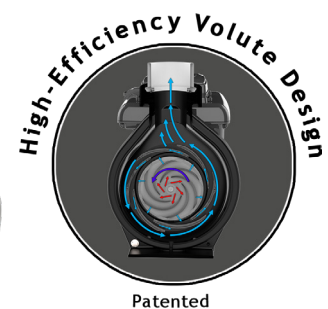
16 per pallet

NEW

PIPELINE PUMPS®
HIGH-EFFICIENCY FULL-FEATURED PUMPS



WiFi compatible through phone app



Part #

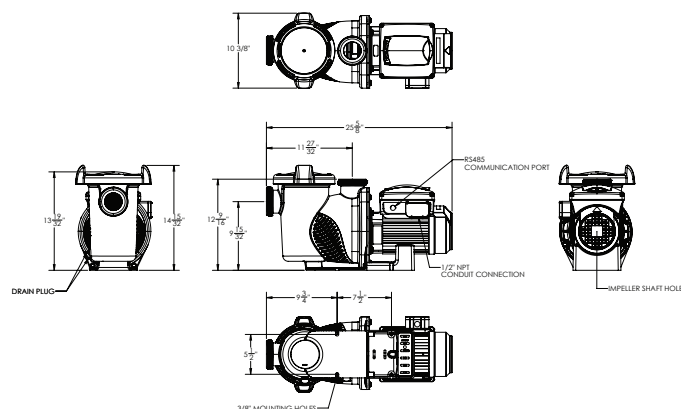
PLP150B - 1.5 HP, Variable Speed, Base Model

PLP150S - 1.5 HP, Variable Speed, Smart Model

PLP150B-SVRS - 1.5 HP, Variable Speed, Base Model, With SVRS

PLP150S-SVRS - 1.5 HP, Variable Speed, Smart Model, With SVRS

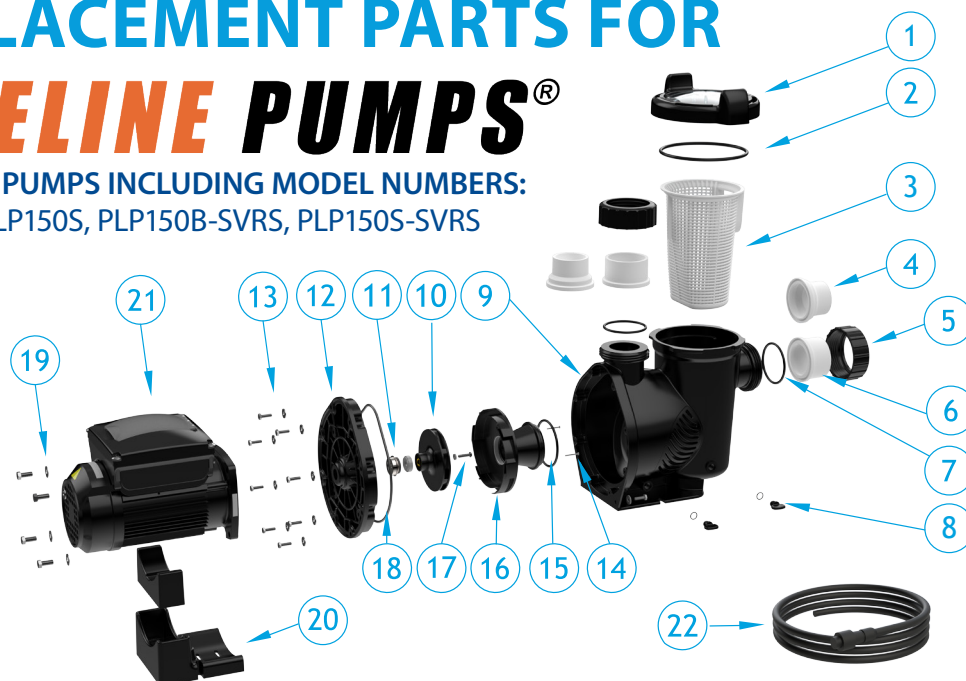
Hayward®, Pentair® and Jandy® are registered trademarks of Hayward Industries, Inc, Pentair Flow Services AG, and Zodiac Pool Systems, LLC., respectively
U.S. Patent No. 11,193,504 and Other Patents Pending



P 877-768-2717 F 877-276-POOL Outside the US: P +1-949-336-1940 F +1-949-336-1940
info@aquastarpoolproducts.com www.aquastarpoolproducts.com

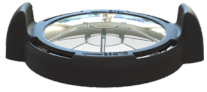
REPLACEMENT PARTS FOR **PIPELINE PUMPS®**

FOR 1.5HP PUMPS INCLUDING MODEL NUMBERS:
PLP150B, PLP150S, PLP150B-SVRS, PLP150S-SVRS



| ITEM NO. | PART NO. | DESCRIPTION |
|----------|-----------------|---|
| 1 | AP1101 | PUMP LOCKING RING AND COVER |
| 2 | O-RING-439-EPDM | O-RING, #439, EPDM |
| 3 | AP1009 | PUMP BASKET |
| 4 | AP1102 | PUMP UNION, 2" SOCKET, QTY 2 |
| 5 | AP1103 | NUT, UNION, 2.5", QTY 2 |
| 6 | AP1104 | PUMP UNION, 2.5" SOCKET, QTY 2 |
| 7 | O-RING-338-EPDM | O-RING, #338 EPDM |
| 8 | AP1105 | DRAIN PLUG AND ORING, #014,A EPDM |
| 9 | AP1005 | PUMP HOUSING |
| 10 | AP1036 | IMPELLER ASSEMBLY, 1.5 HP |
| 11 | AP1051 | SEAL, CERAMIC, PS-3865R |
| 12 | AP1006 | SEAL PLATE, PUMP |
| 13 | AP1106 | SCREW, 1/4"-20 X 7/8" LG, HEX HEAD, 18-8 SS AND WASHER, 3/4" OD X 5/16" ID, USS, 18-8 SS, QTY 8 |
| 14 | AP1107 | SCREW, 4-40 X 1-1/8" LG., PAN HEAD PHILL. 316SS, QTY 2 |
| 15 | O-RING-341-EPDM | O-RING, #341, EPDM |
| 16 | AP1017 | DIFFUSER, PUMP |
| 17 | AP1108 | 1/4-20 X 1" LG, LEFT THD, BUTTON SCREW, 316 SS AND WASHER, .5" OD X .23" ID X .1" THK., EPDM RUBBER |
| 18 | O-RING-370-EPDM | O-RING, #370 EPDM |
| 19 | AP1109 | SCREW, 3/8"-16 X 1" LG., HEX HEAD, 18-8 SS AND WASHER, 7/8" OD X .4" ID X .05" THK., 18-8 SS, QTY 4 |
| 20 | AP1110 | BUMPER AND FOOT, MOTOR SUPPORT |
| 21a | AP150B | 1.5 HP, VARIABLE SPEED, BASE MODEL |
| 21b | AP150S | 1.5 HP, VARIABLE SPEED, SMART MODEL |
| 21c | AP150B-SVRS | 1.5 HP, VARIABLE SPEED, BASE MODEL WITH SVRS |
| 21d | AP150S-SVRS | 1.5 HP, VARIABLE SPEED, SMART MODEL WITH SVRS |
| 22 | AP2006 | COMMUNICATION CABLE |

1



2



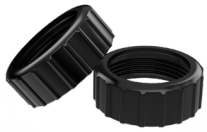
3



4



5



6



7



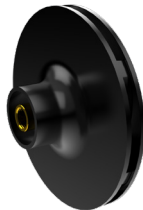
8



9



10



11



12



13



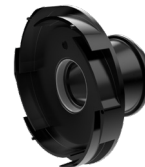
14



15



16



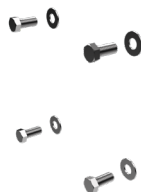
17



18



19



20



21

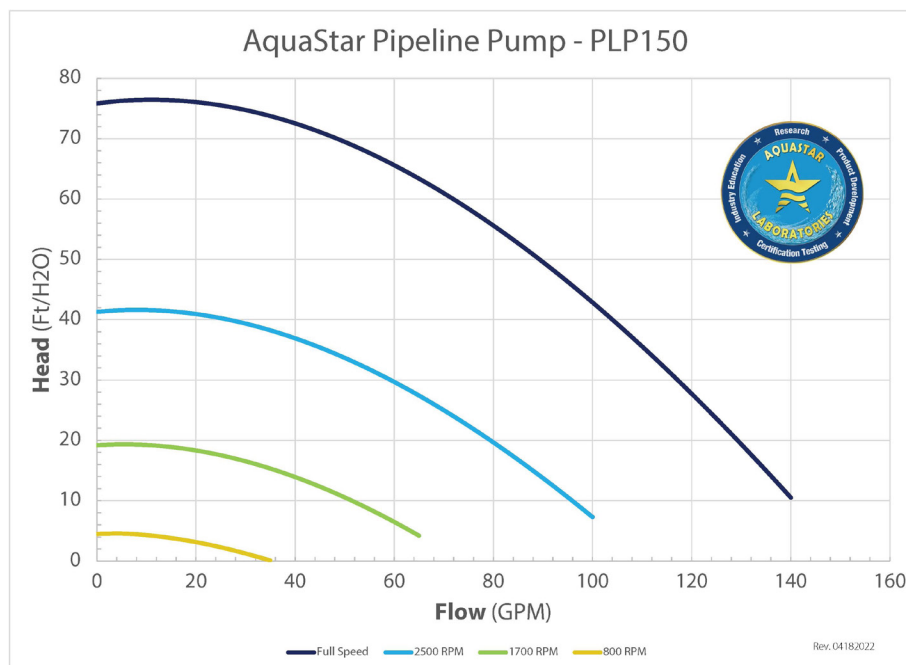


22



PIPELINE PUMPS® PUMP CURVES

Pump Curves for PLP150B, PLP150S, PLP150B-SVRS, and PLP150S-SVRS



Pump Curves for PLP300S and PLP300S-SVRS

