

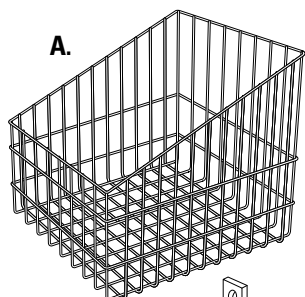
TILT-OUT HAMPER

Installation Instructions

Inspect all parts and read all instructions prior to beginning assembly and installation.

Parts Included

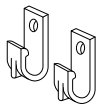
- A. Hamper basket
- B. J-hooks
- C. Mounting Screws



A.



C.



B.

Tools Required

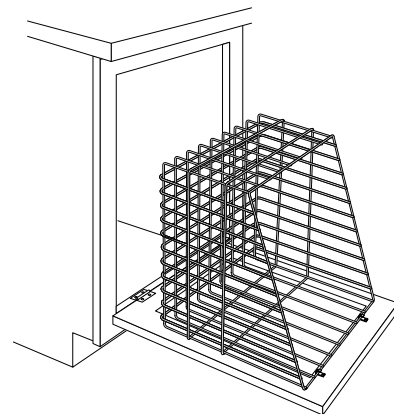
- Phillips head screwdriver
- Drill with 1/16" (1.5mm) bit for drilling pilot holes
- Pencil

Product Assemblies

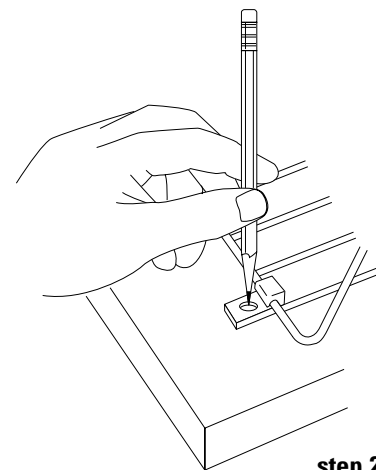
T01710
T01713
T01716

Step 1 Open cabinet door and hold hamper in place on back of door. Hamper is designed to be installed on the top frame of the wood where the wood is the thickest. Caution: Make sure the mounting screws are not longer than the thickness of the door by measuring the thickness at the doorframe.

Step 2 Mark the position of the mounting screw locations with a pencil. It is recommended to use small pilot holes drilled into the door to avoid splitting the wood. Fasten the J-hooks in place, using the screws provided. Hang hamper on J-hooks. Installation is now complete.



step 1



step 2



Real Solutions
For Real Life.™

KNAPE & VOGT MANUFACTURING COMPANY

P.O. Box 191, Muncie, IN 47308

0.899.6535 • 765.288.8730 • Fax 765.288.0851 • www.kv.com

RN-230EFS 05/03