



Engineered to Innovate

# Brochure Pack

US Version



# Mini 60

Striplox  
2/30 Walker Street,  
Tennyson Brisbane QLD 4105,  
Australia  
+61 7 3392 6172  
striplox@joinlox.com

[joinlox.com/striplox](http://joinlox.com/striplox)

## Striplox™ Mini 60

### Convenient concealed slide to lock joint

Striplox Mini 60 is suited to typical everyday assembly processes without the need for specialised branded tools. The connector system offers flexibility as well as rapid assembly, producing a tight and neat fully concealed permanent and reusable joint every time.

Striplox Mini 60 is suitable for numerous applications and can be used with a variety of substrates and building products from 12mm thick and upwards. Striplox Mini's strength, durability, versatility, ease of use with limited tools, and no loose fasteners will save on labour costs. Modular components can be shipped in flat pack form, delivering significant competitive advantages.

*Integrating Striplox Mini into your products and installations either in the factory, in the home or even in the most remote site locations will ultimately change the functionality and processes used bring greater profitable results.*

### Benefits

- Assembly with standard 4" biscuit cutter
- Cabinetry or panels can be fitted permanently or removed with ease
- Can be used in substrates of 0.5" thickness and upwards
- No visible fixings – completely concealed joint
- Eliminates damage – install panels during final build
- Strength, Durability and Versatility
- Lower transportation cost – flat pack
- Lower labour costs with fast on site assembly
- Joining will not interfere with substrate finish (ie. Veneers, 2pac paint)

### Applications

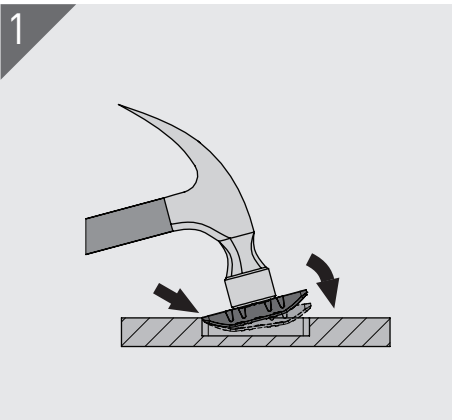
- Modular entertainment builds
- Locker systems assemblies
- Furniture construction and interior fitting
- Shop fitting displays and signage
- RV and Marine fit outs
- Commercial wall paneling and office partitioning
- Feature ceilings, walls, cabinetry, shelving
- Framing of artwork/mirrors
- Toilet/shower partitioning
- Wardrobe fit outs
- Exhibition and trade events
- DIY garden shed and Patio



**Get your Striplox Sample Kit!**

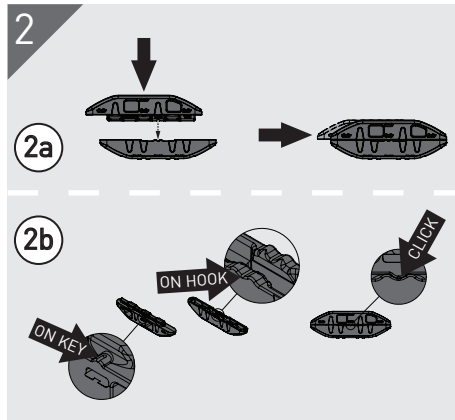
Contact your local distributor or request a Sample Kit from [joinlox.com/striplox](http://joinlox.com/striplox) or call 1800 JOINLOX.

# How it works



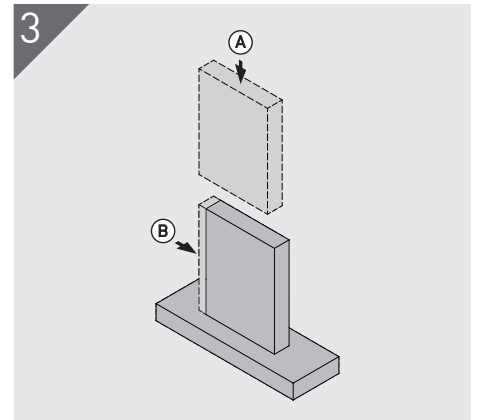
## Installation

Apply glue to the groove. To aid in the installation, start by inserting one end in the slot then use a hammer or mallet to tap the Striplox Mini 60 into place.



## Assembly

The Mini 60 features alignment marks (2a) and locating tabs (2b) which click into place when fully assembled. Please note this feature is not a lock, making the joint fully reversible.



## Completion

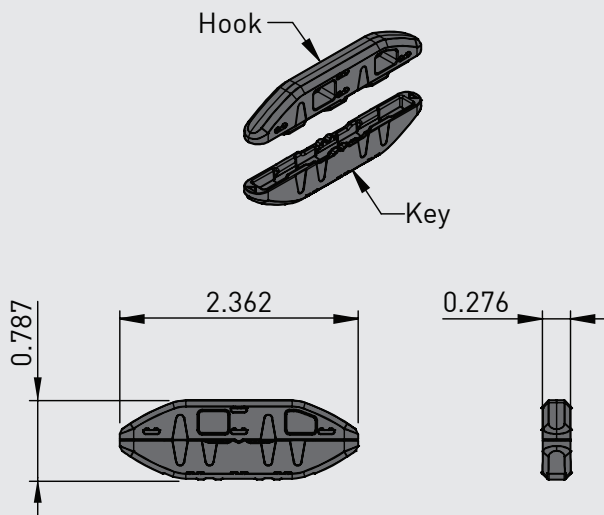
Due to the unique design, the key only need to travel one pitch for full lock-up, giving you a firm, invisible joint every time.

# Specifications

<b>Material:</b> High Strength Reinforced Nylon <b>Colour:</b> Black <b>Fixing:</b> Glue Tested using MDF and fixed with glue. *C is in direction of lock-up	Direction	Indic. Load Capacity
	A	198 lb
	B	176 lb
	*C	220 lb

- Refer to Mounting Data Sheet for full dimensions
- Refer to Installation Guide

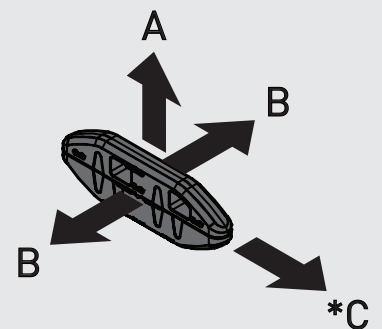
## Dimensions



Visit the Striplox website for more information



## Load Direction



Striplox  
 2/30 Walker Street,  
 Tennyson Brisbane QLD 4105,  
 Australia  
 +61 7 3392 6172  
 striplox@joinlox.com

Proudly Australian Designed, Owned and Manufactured



[joinlox.com/striplox](http://joinlox.com/striplox)

Material	High Strength Reinforced Nylon
Colour	Black
Fixing Method	Glue

### Mounting

#### 1 Router Cut Option

Use a  $\text{Ø}9/32$ " router bit to cut a slot in both substrates where the Hook and Key of the Mini 60 is to be mounted. Depth needs to be 0.394" for each.

#### 2 Biscuit Cut Option

Set the depth stop to #20 and guide height for substrate thickness. Plunge in once then repeat using the **Mark-Out Template**, packing the guide 0.118" to achieve a 0.276" cut.

#### 3 Striplox Liquidlox

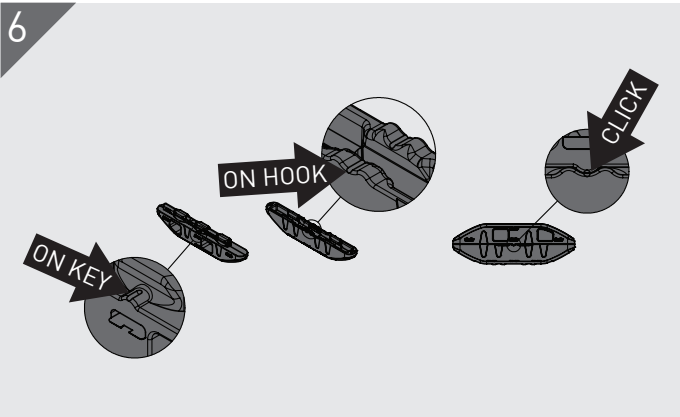
Apply Striplox Liquidlox 15 second cure adhesive to both sides of the slot in each substrate. Visit [joinlox.com/striplox](http://joinlox.com/striplox) or call 1800 JOINLOX to find out more about Striplox Liquidlox and Mark-Out Template.

#### 4

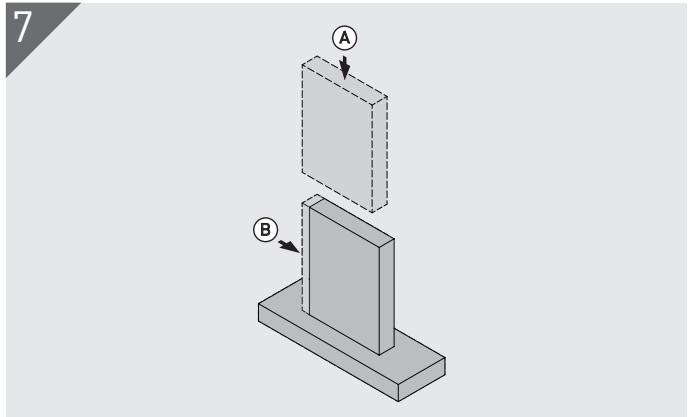
To aid in the installation of the Key and Hook, start by inserting one end in the slot when use a hammer or mallet to tap the component into place. Ensure centre lines on substrate align with centre marks on Hook and Key.

#### 5

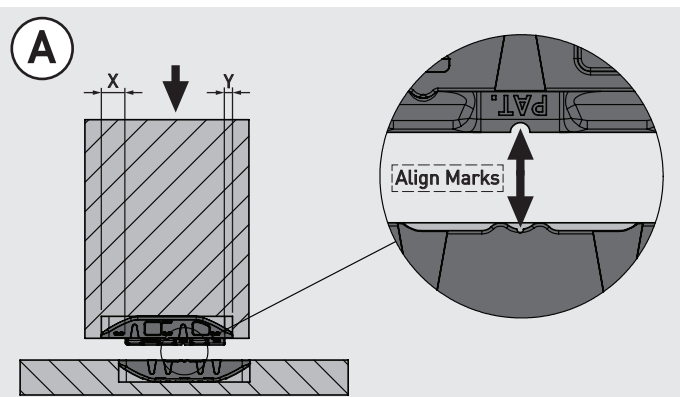
After glue is applied, insert Key and Hook into slot until flush with substrate. Allow to dry as per glue manufactures instructions.



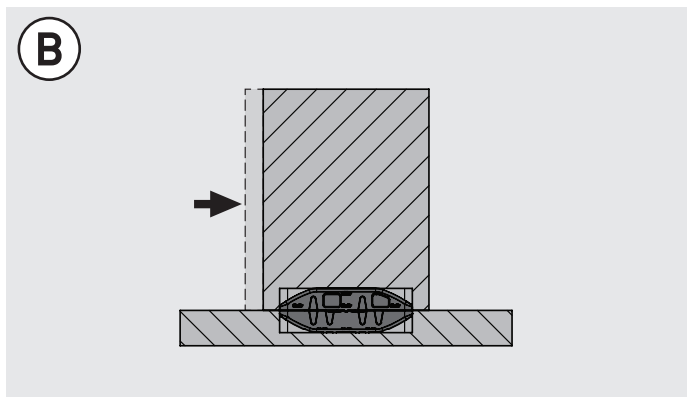
The Mini 60 features locating tabs which click into place when fully assembled. Please note this feature is not a lock, making the joint fully reversible.



Assembly components remembering the Key only needs to travel 1 pitch for full engagement. This is detailed in steps A and B.

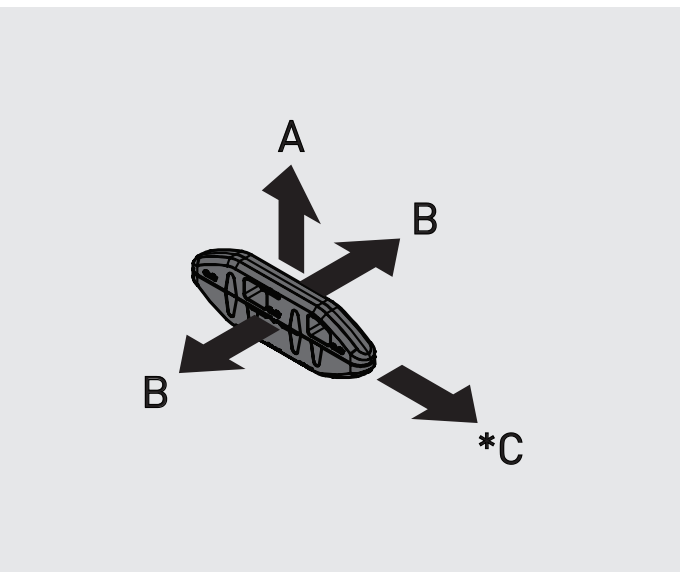


Note the offset of the lugs on the Key body, length X is larger than Y. Insert the Hook into the Key with the longer X end towards the face to be pushed during assembly.



To complete the assembly push the end of the substrate (with X offset) until the Mini 60 is fully engaged.

## Load Capacity



Direction	Indic. Load Capacity
A	198 lb
B	176 lb
*C	220 lb

- Tested using MDF and fixed with glue.
- \*C is in direction of lock-up.

# Striplox Mini 60

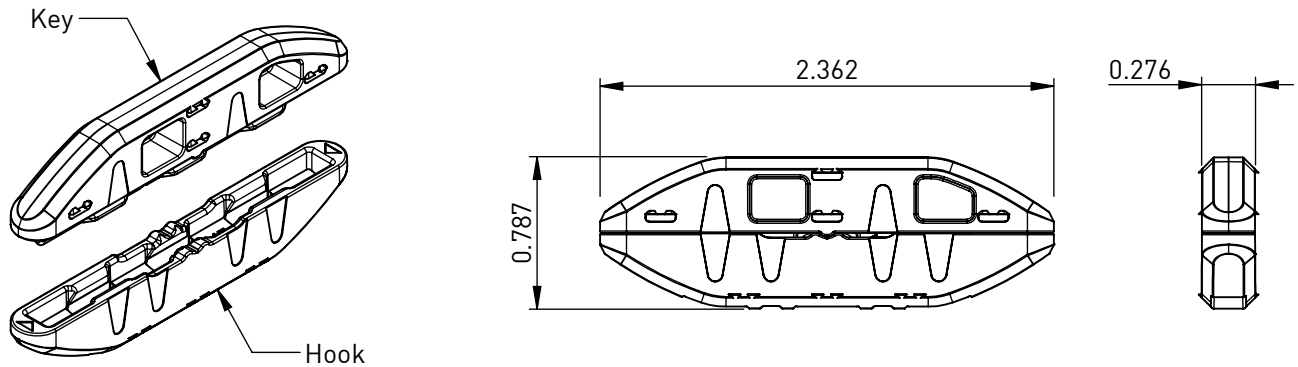
## Rapid Assembly Systems



### Mounting Data Sheet - US Version

All dimension in inches

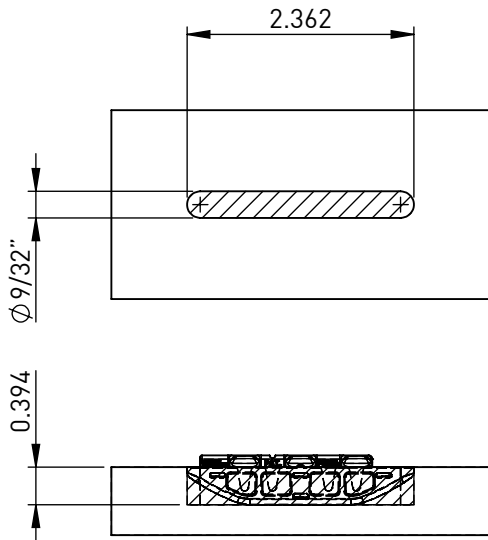
#### General Dimensions



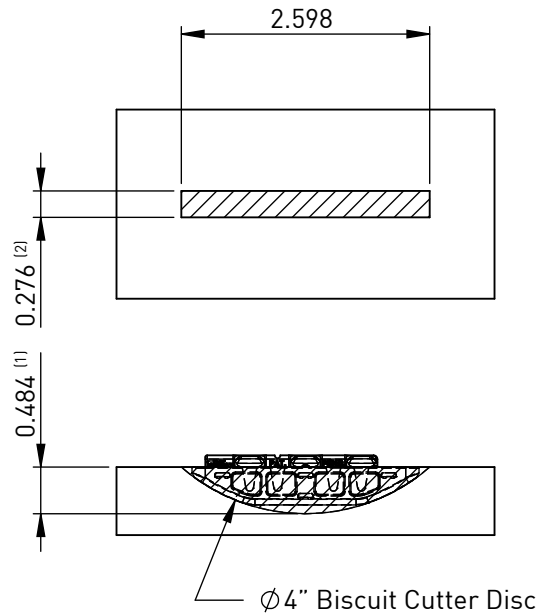
Material	High Strength Reinforced Nylon
Colour	Black
Fixing Method	Glue

#### Mounting Dimensions

##### Option A - Router Cut



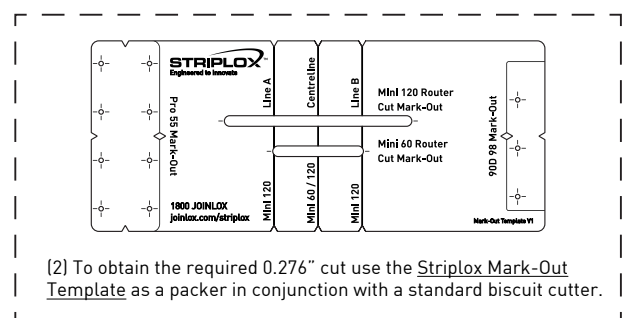
##### Option B - Biscuit Cutter



(1) #20 biscuit cutter depth setting

#### Notes:

1. Groove detail typical for both Hook and Key halves.
2. Key shown in groove.



(2) To obtain the required 0.276" cut use the Striplox Mark-Out Template as a packer in conjunction with a standard biscuit cutter.