



Engineered to Inovate

# Brochure Pack

US Version



# Pro 23

Striplox  
2/30 Walker Street,  
Tennyson Brisbane QLD 4105,  
Australia  
+61 7 3392 6172  
[striplox@joinlox.com](mailto:striplox@joinlox.com)

[joinlox.com/striplox](http://joinlox.com/striplox)



## Striplox<sup>TM</sup> Pro 23

Makes concealed joints easy

Striplox Pro 23 makes joining faster and simpler. Expanding on the versatile Pro range, the conveniently sized Striplox Pro 23 will mount to the most commonly used standard sized framing and stud whilst delivery high strength and durability due to its unique design where loads are distributed evenly over the entire product.

*Designed for panels, frames and components, this hidden mounting system delivers a flawless finish with perfect alignment every time.*

The secret to Striplox is the unique award winning design, internationally patented secure fastening system suitable for a wide variety of substrates. By using Striplox designers, installers and manufactures are able to re-think assembly processes.

Striplox is perfect for many applications/designs and are only limited by your imagination. Striplox Pro 23 is the perfect joining solutions for all cabinetry and can be removed and refitted time after time.



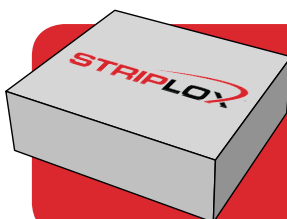
### Benefits

- No visible fixings
- Eliminates damage – install panels during final build
- Lower transportation cost – flat pack
- Lower labour costs on site assembly
- Designed using the internationally recognised 32 system
- Strength, Durability and Versatility
- No tools or trade skills required for assembly
- Cabinetry or panels can be fitted permanently or removed and re-used with ease
- Striplox Pro 23 can be configured in many different ways to best suit your application, surface mount or rebate mount and orientated for vertical or horizontal assembly
- Variety of mounting options glue and or screw fix



### Applications

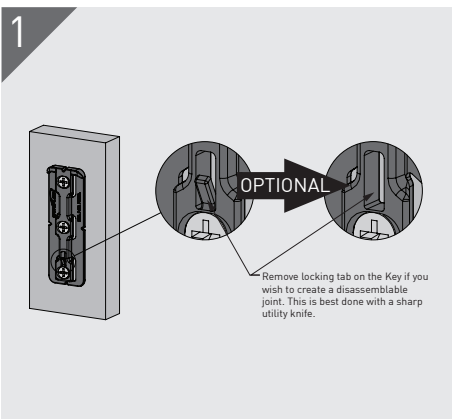
- Ceilings, walls, cabinetry, feature panels
- Commercial wall paneling and office partitioning
- Enhanced performance of acoustic paneling
- Floating shelves
- Furniture construction and interior fitting
- Shop fitting displays and signage
- Exhibition and trade events
- DIY garden shed and Patio
- RV and Marine fitouts



**Get your Striplox Sample Kit!**

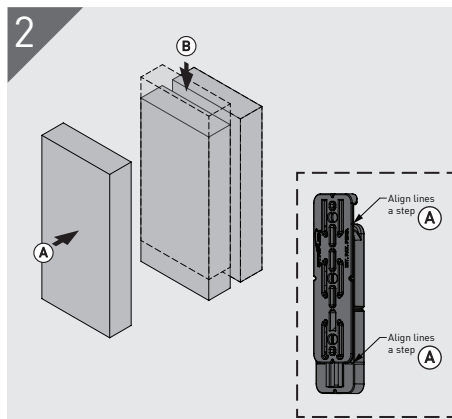
Contact your local distributor or request a Sample Kit from [joinlox.com/striplox](http://joinlox.com/striplox) or call 1800 JOINLOX.

## How it works



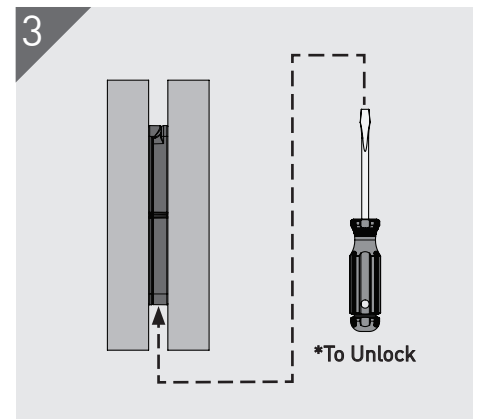
### Installation

Attach both components of the Pro 23 to the desired substrates.  
Remove locking tab if required.



### Assembly

Both components of Pro 23 self align and slide to lock into place. Due to the unique design, the components only need to travel one pitch for full engagement.



### Completion

Complete the installation according to the desired application.

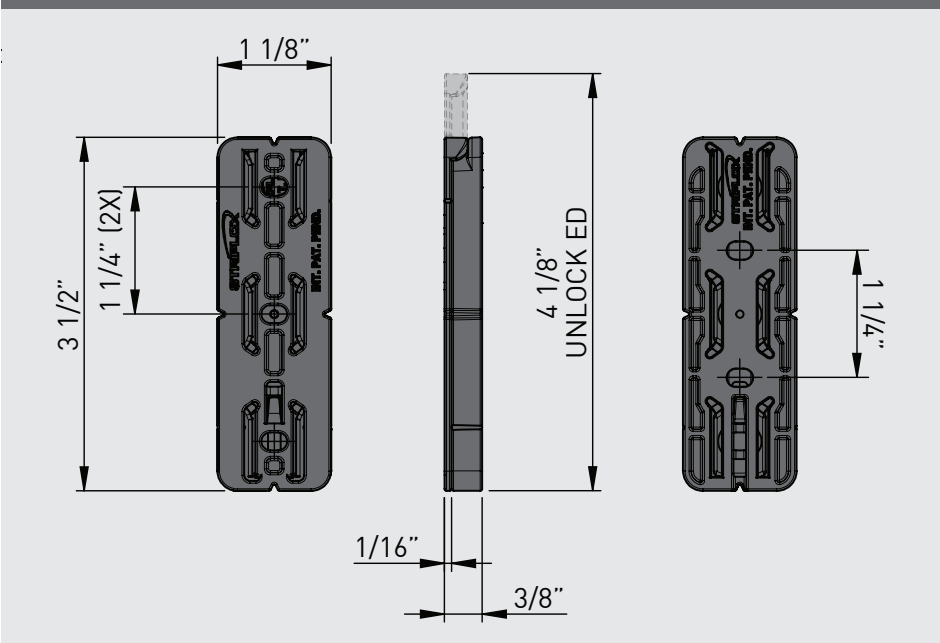
To unlock insert a small screwdriver to release locking tab.

## Specifications

<b>Material:</b> High Strength Reinforced Nylon <b>Colour:</b> Black <b>Fixing:</b> 8G Screws (5x) or Glue *Ensure sufficient screw embedment in substrate. *Tested using Particle Board and fixed with screws.	Direction	Indic. Load Capacity
	A	242 lb
	B	209 lb
	C	352 lb

- Refer to Mounting Data Sheet for full dimensions
- Refer to Installation Guide

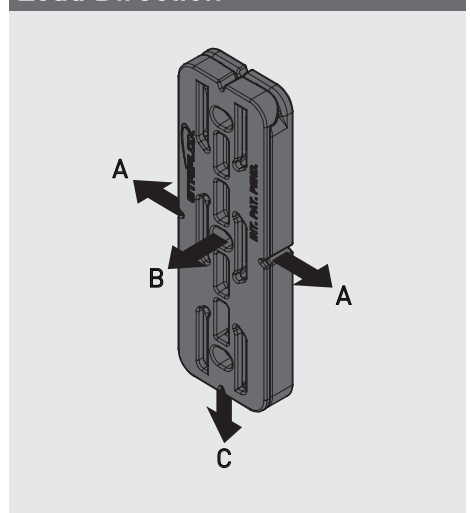
### Dimensions



Visit the Striplox website for more information



### Load Direction



Striplox  
2/30 Walker Street,  
Tennyson Brisbane QLD 4105,  
Australia  
+61 7 3392 6172  
striplox@joinlox.com

Proudly Australian Designed, Owned and Manufactured

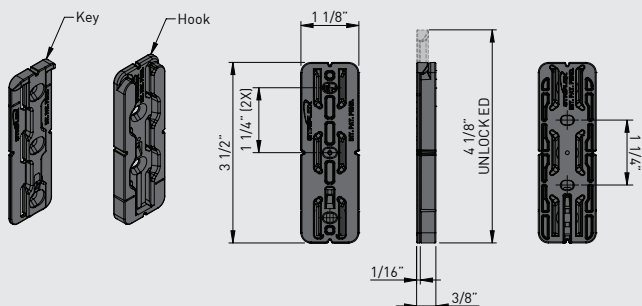
**STRIPLOX**™

**JOINLOX**®

[joinlox.com/striplox](http://joinlox.com/striplox)

Striplox™ and Joinlox® are trademark and patent protected internationally.

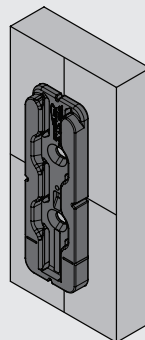
StriploxPro23 Brochure - US V1.0



Material	High Strength Reinforced Nylon
Colour	Black
Fixing Method	8G Screws (5x) or Glue

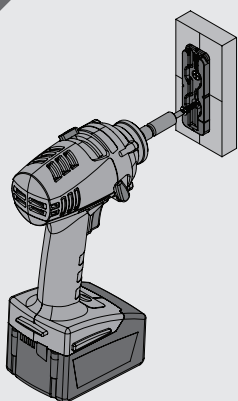
### Flush Mounting

1



Mark center lines, vertical and horizontal, on both substrates. Flush mounting requires no additional preparation. Line the notches in each component (Hook shown here) with the center lines. **Mark-Out Template** can also be used.

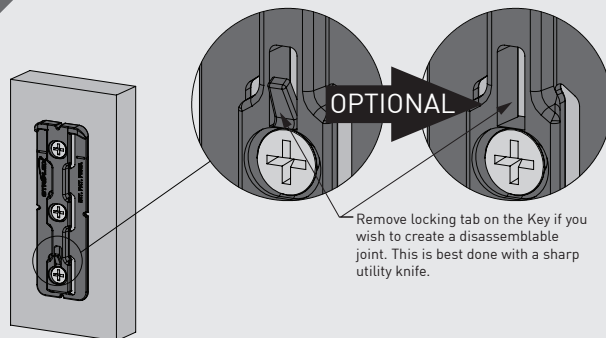
2



**Striplox Liquidlox**  
can also be used for  
mounting the Pro 23

Hold the component in place and fasten to the substrate with 5 x 8G screws. Repeat for matching component. Ensure sufficient screw embedment in substrate.

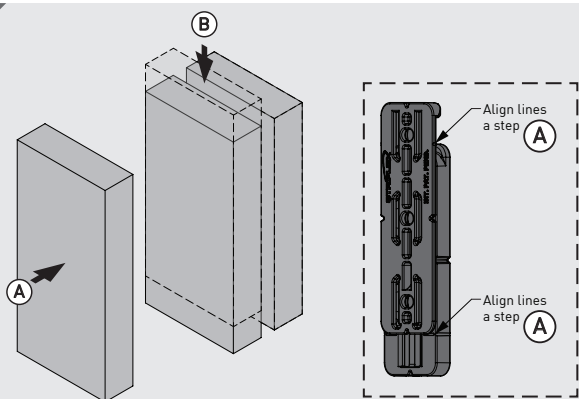
3



Remove locking tab on the Key if you wish to create a disassemblable joint. This is best done with a sharp utility knife.

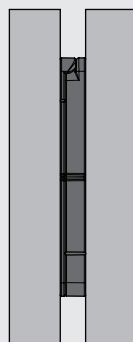
Prior to assembly, establish whether the joint is to be permanent or disassemblable.

4



Assembly the joint remembering the Pro 23 only needs to travel 1 pitch for full engagement. Alignment lines are designed into the parts to help with assembly.

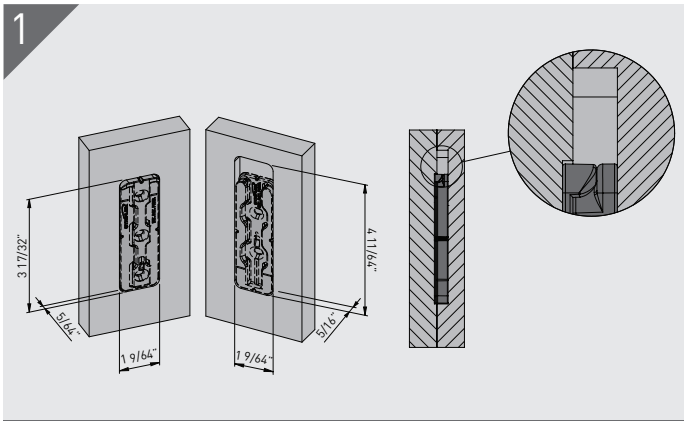
5



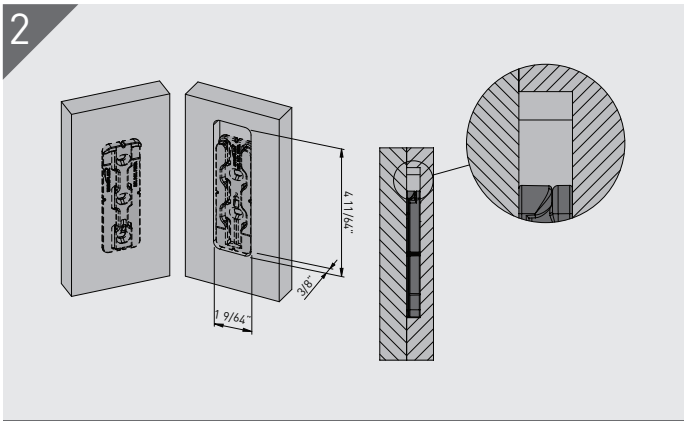
See second page for  
**Rebate** and **Set-Back**  
mounting options.

When assembled, the substrates will be separated by the thickness of the engaged Pro 23.

# Rebate Mounting

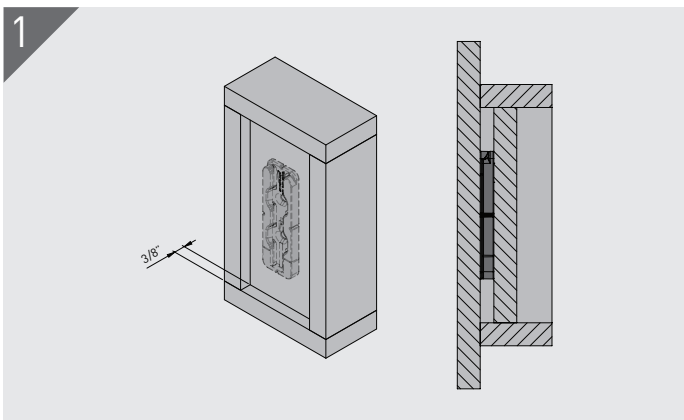


**Part Rebate** - each substrate mounting face is rebating as shown. Ensure sufficient screw embedment in substrate.



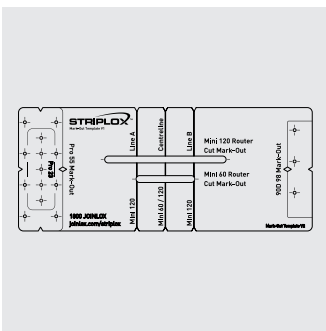
**Full Rebate** - 1 of the substrate mounting faces is rebating the full depth as shown. Ensure sufficient screw embedment in substrate.

# Set-Back Mounting



Setting back the mounting face of either the Hook (as shown) or Key by 3/8" results in a concealed joint without the need to cut rebates.

# Installation Aids



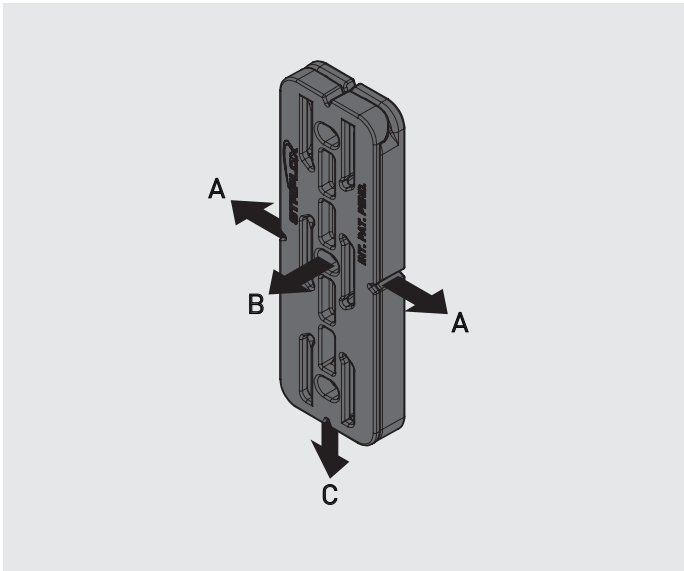
**Striplox Mark-Out Template**  
Developed to aid in the installation of the Striplox Pro 23, Pro 55, 90D 98, Mini 60 and 120.



**Striplox Liquidlox**  
Instant adhesive with a 15 second cure time. Liquidlox delivers a strong and reliable connection between Striplox products and most substrates.

Visit [joinlox.com/striplex](http://joinlox.com/striplex) or call 1800 JOINLOX to find out more about these installation aids.

# Load Capacity



Direction	Indic. Load Capacity
A	242 lb
B	209 lb
C	352 lb

- Tested using particle board and fixed with screws.
- Ensure sufficient screw embedment in substrate.

# Striplox Pro 23

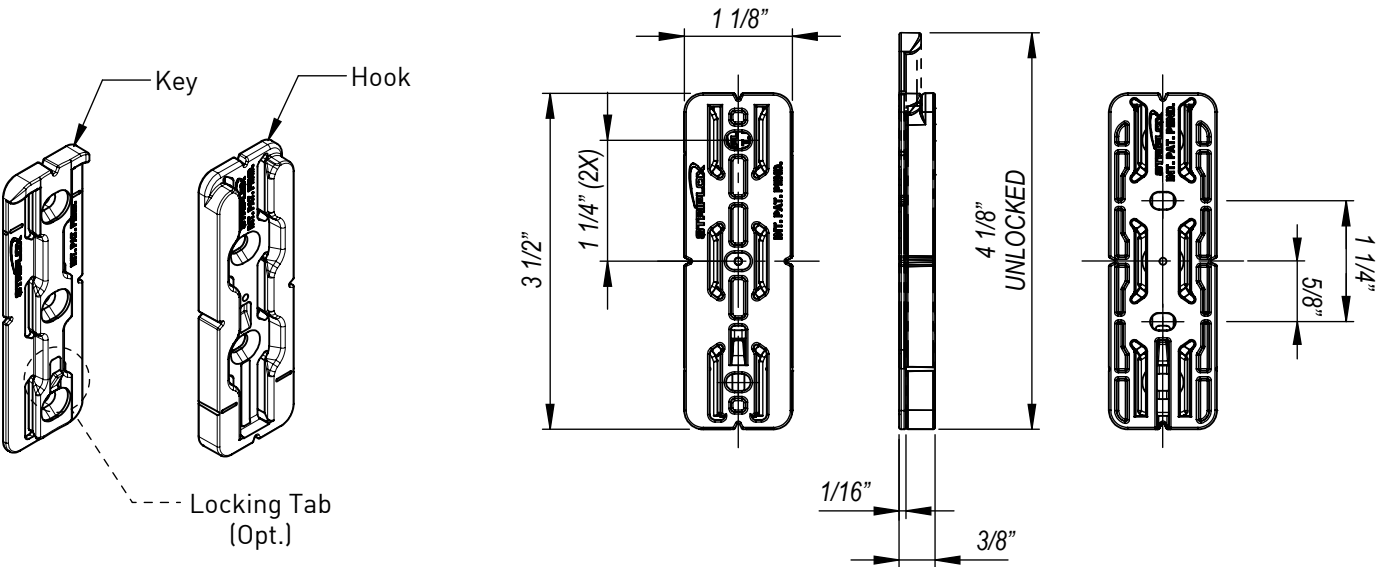
Rapid Assembly Systems



## Mounting Data Sheet - US Version

All dimension in inches

### General Dimensions



Material	High Strength Reinforced Nylon
Colour	Black
Fixing Method	8g Screws or Glue

\*Ensure sufficient screw embedment in substrate.

### Mounting Dimensions

