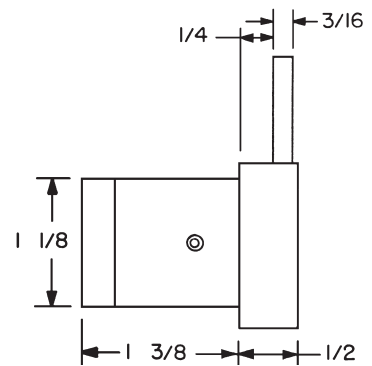
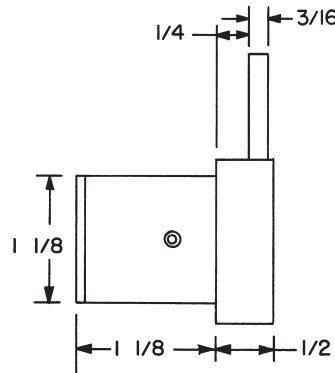
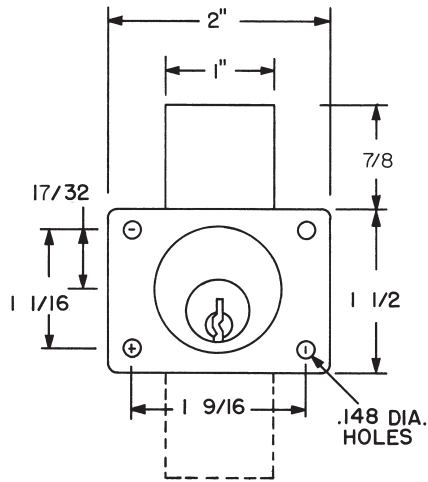
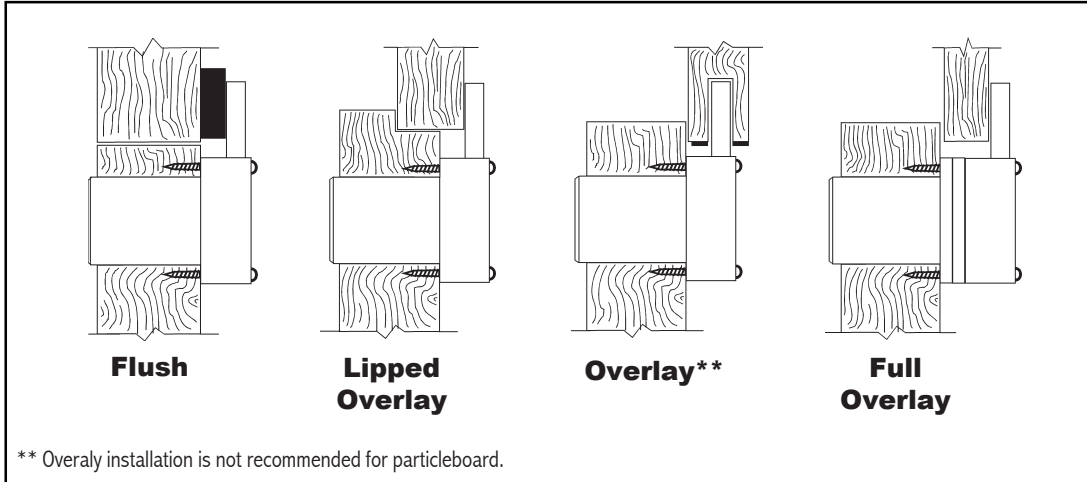


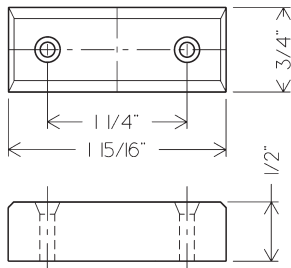
Installation Instructions

800

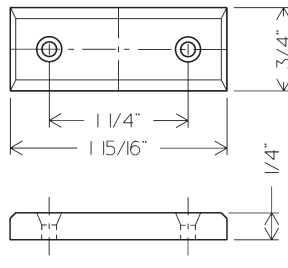
Typical Installation



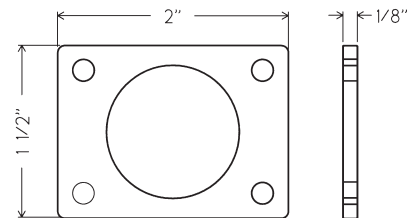
Use of spacers and strikes depends on application and material thickness.



10-055 - 1/2" bar strike



10-054 - 1/4" bar strike



10-350 - 1/8" spacer

| | | | | |
|--|--|------------------------------|----------------------------|---------------------------------|
| Title Installation instructions for 800 series cabinet drawer lock | | | | |
| Series 800 | Barrel Length 1-1/8" or 1-3/8" | Bolt type Deadbolt | Mounting Surface | Revision Date 06/2005 |

