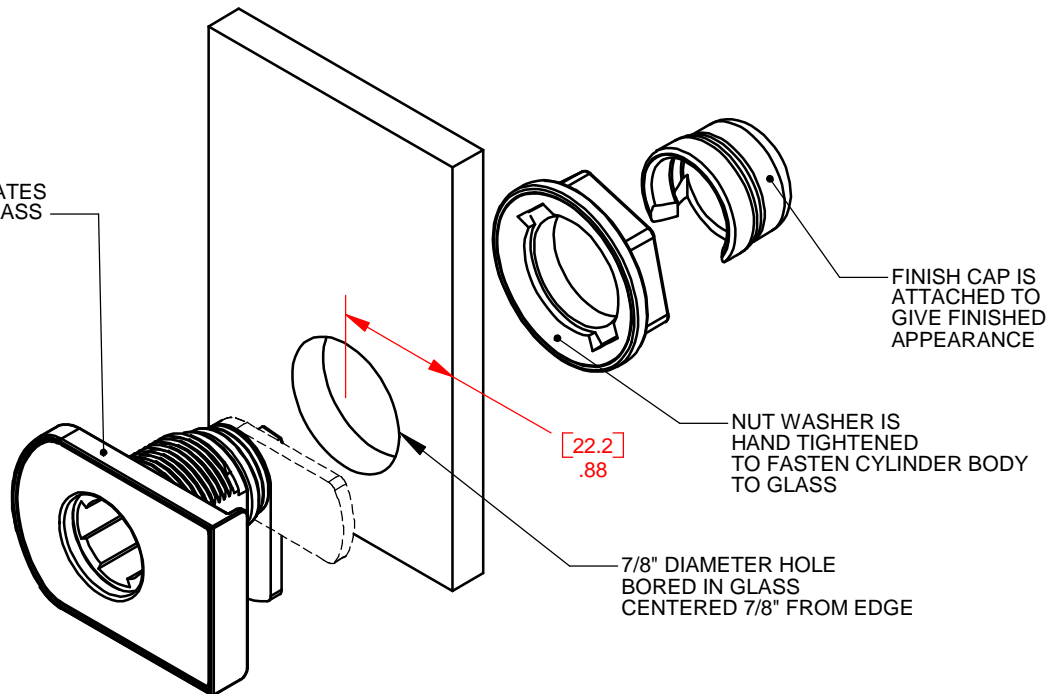


CYLINDER BODY ROTATES THROUGH HOLE IN GLASS

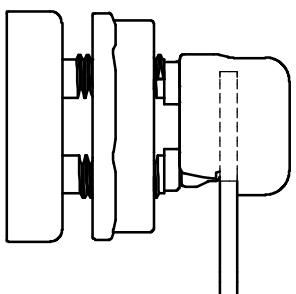


[22.2] .88

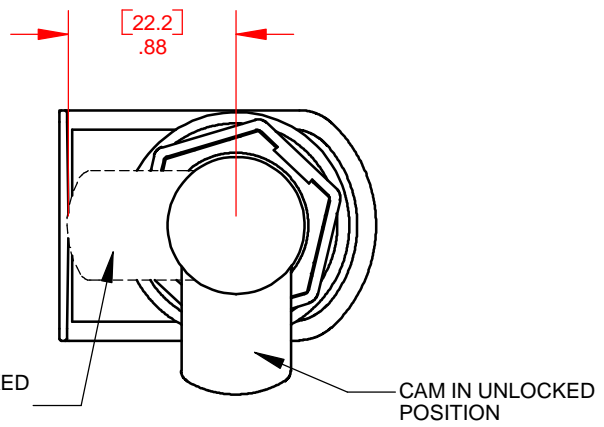
FINISH CAP IS ATTACHED TO GIVE FINISHED APPEARANCE

NUT WASHER IS HAND TIGHTENED TO FASTEN CYLINDER BODY TO GLASS

7/8" DIAMETER HOLE BORED IN GLASS CENTERED 7/8" FROM EDGE



CAM IN LOCKED POSITION



CAM IN UNLOCKED POSITION

PART NUMBERS:

- CB-301 NICKEL FINISH
- CB-305 BRASS FINISH
- CB-307 SATIN NICKEL FINISH

COMPONENTS ARE BAGGED TOGETHER IN POLYBAG

DATE	03/24/03	DRAWING#	CB-30X
------	----------	----------	--------

DESCRIPTION	TYPE 300 GLASS DOOR CAM LOCK
-------------	------------------------------

**CompX**  
**TIMBERLINE**



915 Sherwood Drive Phone: 847-234-1864  
Lake Bluff, IL 60044 Fax: 847-234-7922