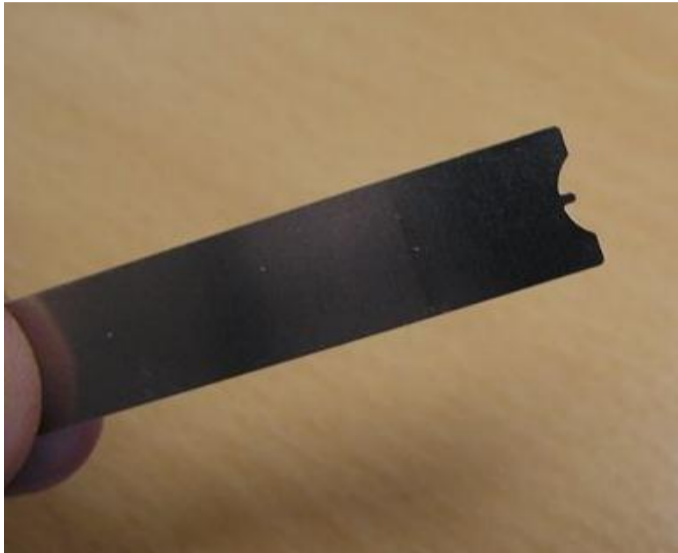


Instructions for Combi-Code Lock Codefinder
Article 231.16.999



The steel plate codefinder must be inserted into the slot on the left side (art. 231.16.300 or 231.16.310) or on the right side of the right wheel (art. 231.16.311).

Hold steel plate codefinder upright using slight and constant downward pressure. Advance the left (right) wheel with a screwdriver in numerical order (0, 1, 2, 3, 4, 5, 6, 7, 8, 9) until the spike of the steel plate drops slightly at the correct digit and then advance the wheel further.

Follow this procedure with the center wheel and then the right (left) wheel.

When completed, be certain to record the correct combination code for future use.

of the left wheel
t. 231.16.301

sure. Then
, 2, 3, ...)
you cannot

.

e reference.