



Häfele Connect Wall Switch BLE

850.00.025
850.00.026



732.28.365

HDE 08/2018

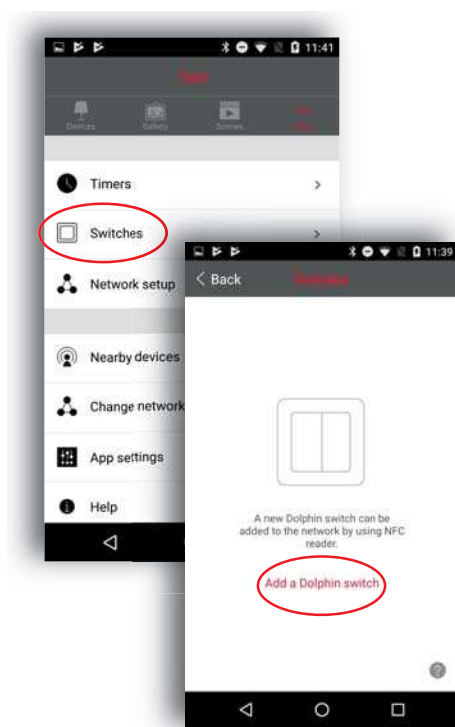
Using the Häfele Connect Wall switch BLE

With the battery-less wall switch it is possible to control e.g. scenes, animations or individual BLE boxes without using your smartphone or tablet. The technology is based on the patented EnOcean Dolphin energy harvesting technology and therefore works without a cable and without a battery. The switch is completely maintenance free.

The switches are integrated into the Häfele Connect App via a so-called NFC interface. Unfortunately, Apple does not currently support this feature. Therefore, an Android device with NFC function is necessary for the first use. After initial configuration the switch can also be configured with an iOS device.

Available as single rocker or a double rocker switch with various configurations.

First time use



1. Go to **More > Switches** in your Android device.

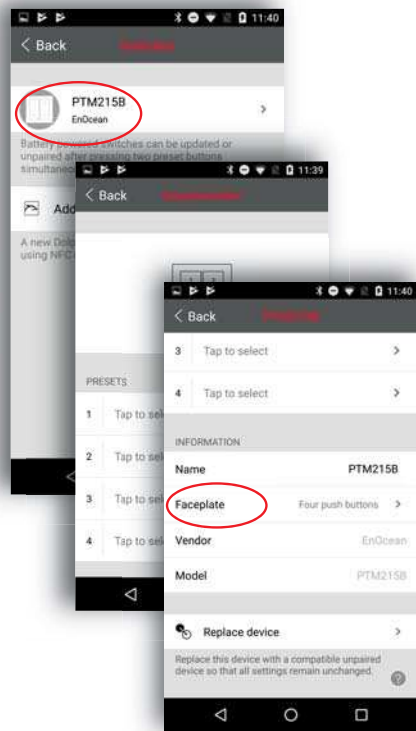
2. Click on **Add a Dolphin switch**.



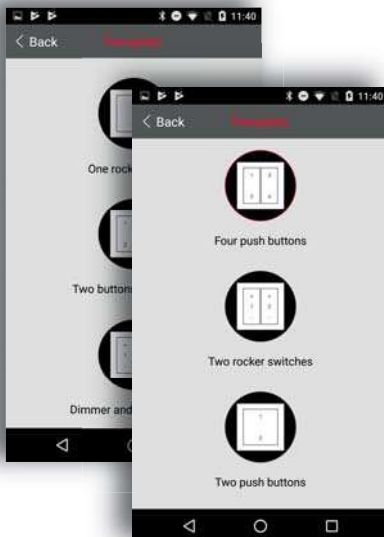
3. Touch the switch with the back side of your device.

4. When the NFC reader of your mobile device detects the switch you will hear a sound signal and a new switch window is opened.

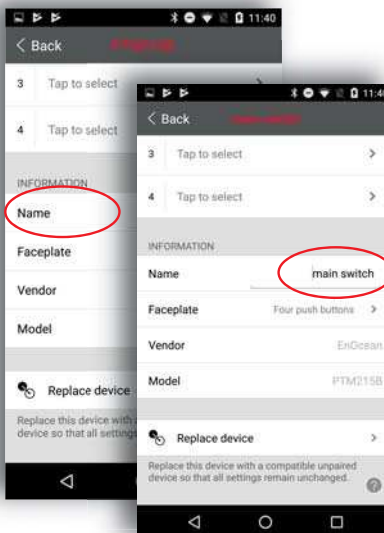
5. By clicking the switch a configuration window is opened. Here you can configure the switch. First you have to select the **Faceplate**.

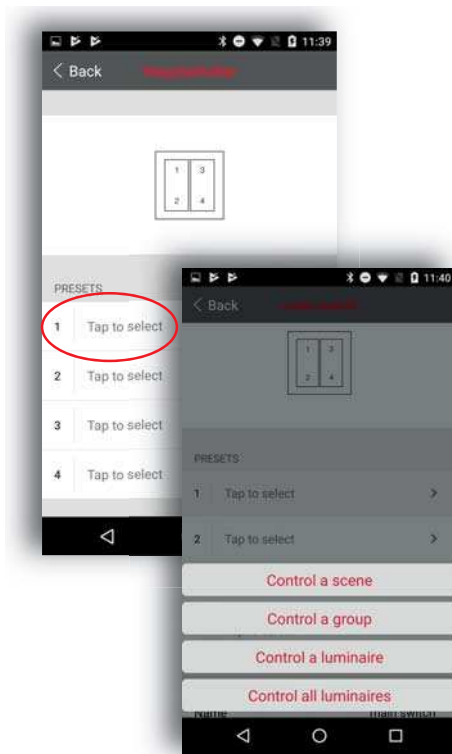


6. A selection window will open. Choose the right configuration and press **Back**.

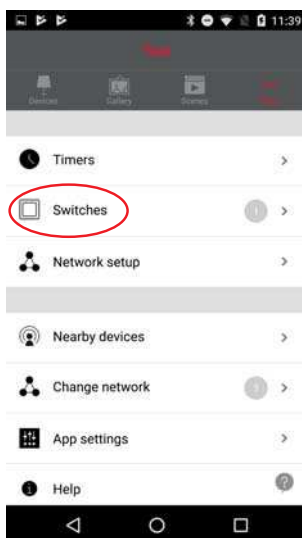


7. You can rename the switch individually. Therefore you have to press the **Name** button. Then insert your desired name.

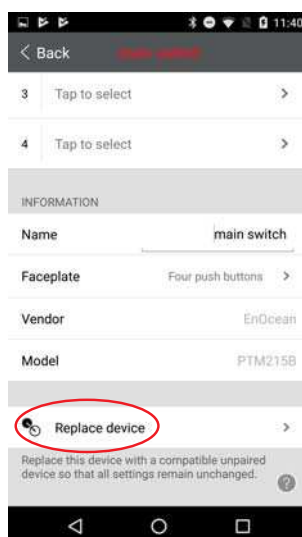




8. Depending on the selected faceplate you can link the buttons of the switch to control scenes, devices or groups. It is also possible to control all devices together.



9. Your connected switches will be displayed next to the menu point **Switches**.



10. If you want to replace your switch go to the menu point **Replace device**. Your entire configuration will be transferred to the new switch.