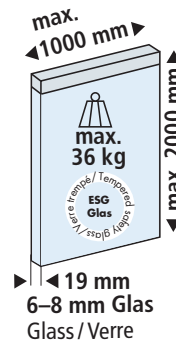
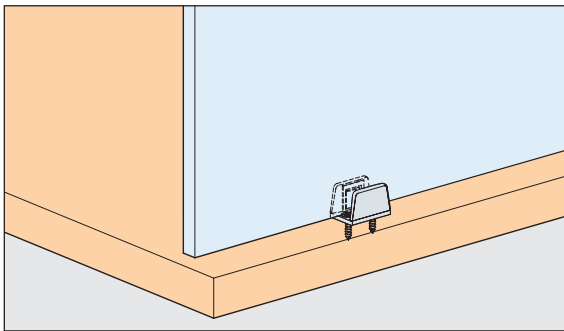
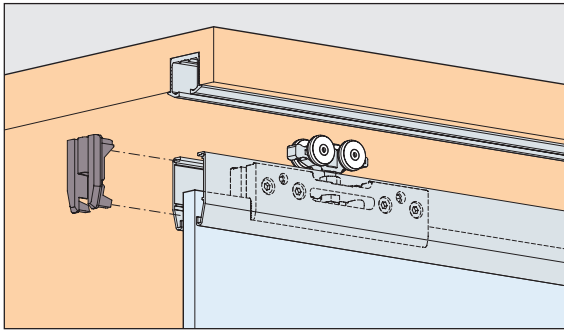
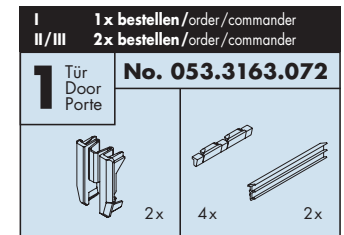
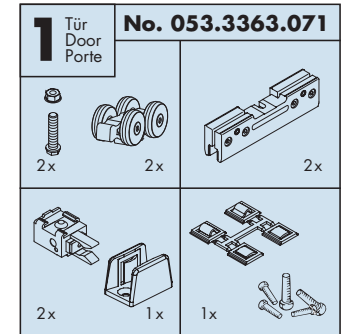


Montageanleitung Mounting instructions Instructions de montage



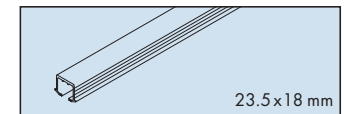
Garnituren / Sets / Garnitures



Zubehör / Accessories / Accessoires

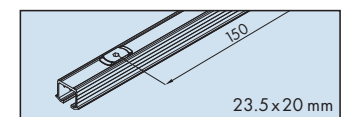
A Einfachlaufschiene, Alu eloxiert, zum Kleben
Single running track, aluminium anodized, for glue fixing
Rail de roulement simple, en alu anodisé, à coller

Gr./Size	Art. No.
2500 mm	053.3324.250
3500 mm	053.3324.350
6000 mm	053.3324.600



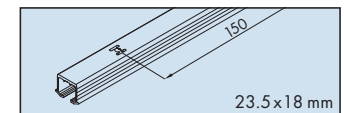
B Einfachlaufschiene, Alu eloxiert, mit Drehriegel
Single running track, aluminium anodized, with swivel lug
Rail de roulement simple, en alu anodisé, avec verrou
(nicht für Hartholz/MDF, not for hard wood/MDF, pas pour bois dur/MDF)

2500 mm	053.3327.250
3500 mm	053.3327.350
6000 mm	053.3327.600



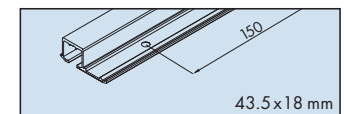
C Einfachlaufschiene, Alu eloxiert, gelocht, zum Schrauben
Single running track, aluminium anodized, pre-drilled, for screw fixing
Rail de roulement simple, en alu anodisé, perforé, à visser

2500 mm	053.3325.250
3500 mm	053.3325.350
6000 mm	053.3325.600



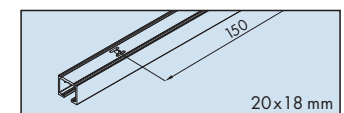
D Einfachlaufschiene, Alu eloxiert, gelocht, zum Schrauben
Single running track, aluminium anodized, pre-drilled, for screw fixing
Rail de roulement simple, en alu anodisé, perforé, à visser

2500 mm	053.3341.250
3500 mm	053.3341.350
6000 mm	053.3341.600



E Einfachlaufschiene Alu eloxiert, gelocht, zum Aufschrauben
Single running track aluminium anodized, pre-drilled, surface mounted
Rail de roulement simple en alu anodisé, perforé, à visser en applique

2500 mm	053.3326.250
3500 mm	053.3326.350
6000 mm	053.3326.600



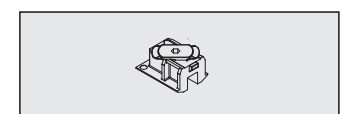
Clip-Blende zu Klemmschuh, Alu eloxiert
Clip-on panel for clamping shoe, aluminium anodized
Cache à clipser pour patin de serrage, en alu anodisé

2500 mm	053.3168.250
3500 mm	053.3168.350
6000 mm	053.3168.600



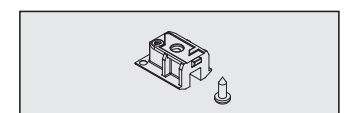
Schienenendstück zu 053.3324/3325/3327, mit Drehriegel
Track end piece for 053.3324/3325/3327, with swivel lug
Pièce d'extrémité pour 053.3324/3325/3327, avec verrou
(nicht für Hartholz/MDF, not for hard wood/MDF, pas pour bois dur/MDF)

2x	053.3355.051
----	--------------



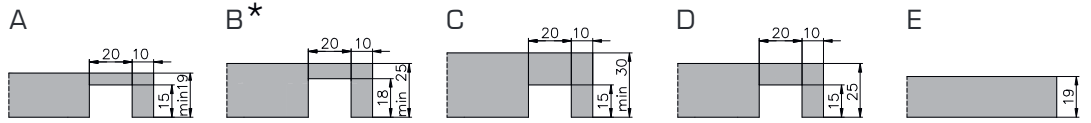
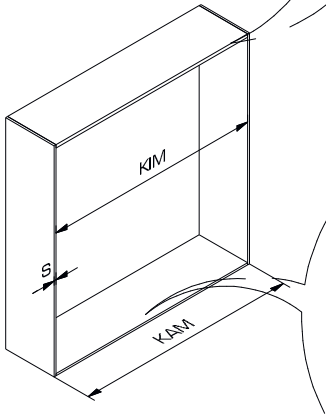
Schienenendstück zu 053.3324/3325/3327, Kunststoff grau
Track end piece for 053.3324/3325/3327, plastic grey
Pièce d'extrémité pour 053.3324/3325/3327, plastique gris

2x	053.3354.071
----	--------------



A Werkzeug | Tool | Outil

- ⊕ PZ: 1
- ⊙ SW: 3/4
- ⊗ TX: 8
- ⊖ No.: -
- ⊙ SW: 8

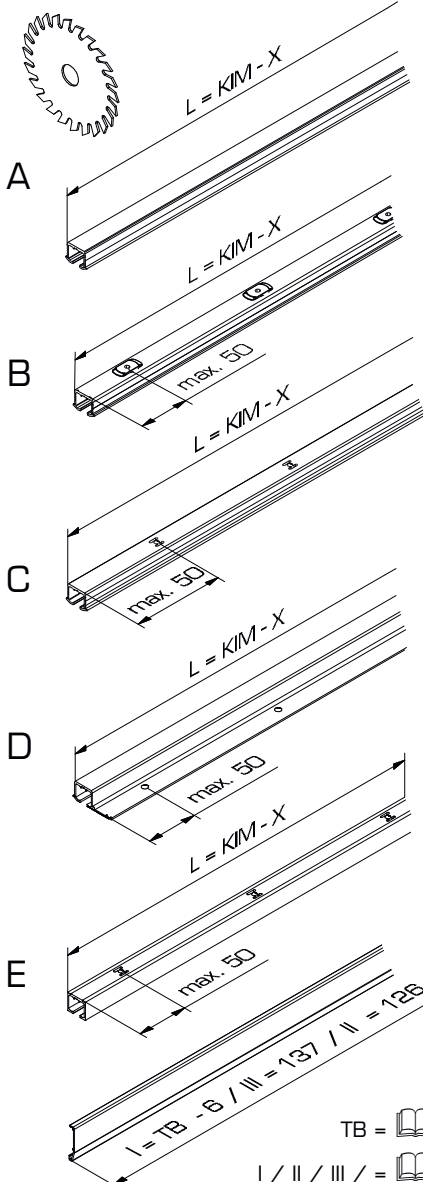


* Nicht für Hartholz/MDF
Not for hard wood/MDF
Pas pour bois dur/MDF

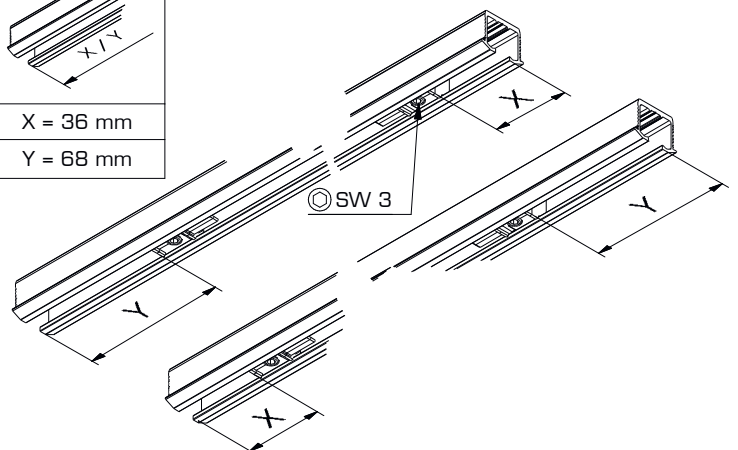
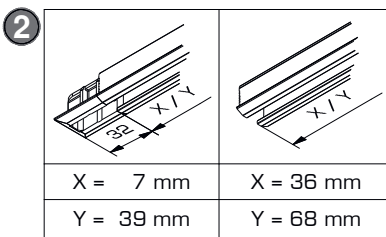
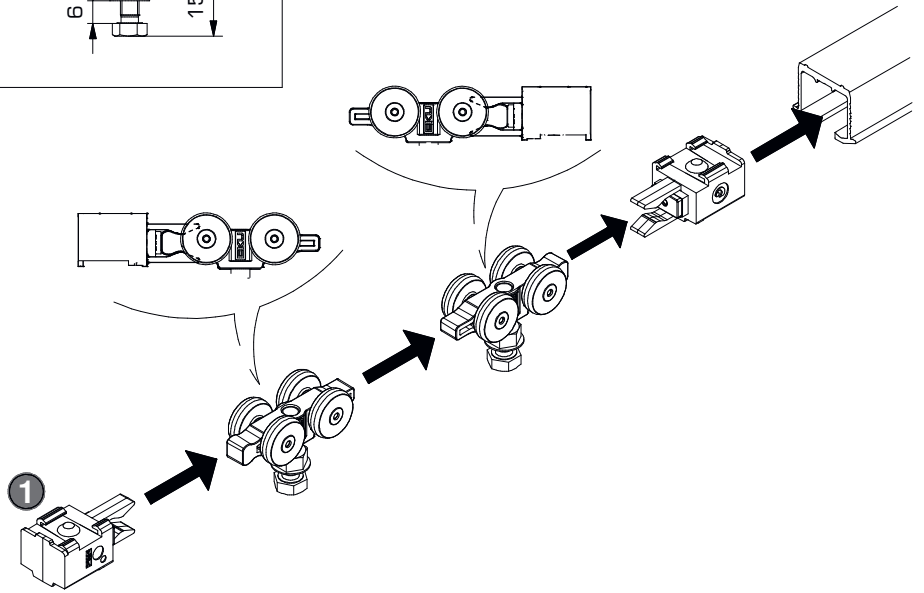
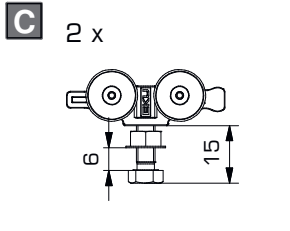


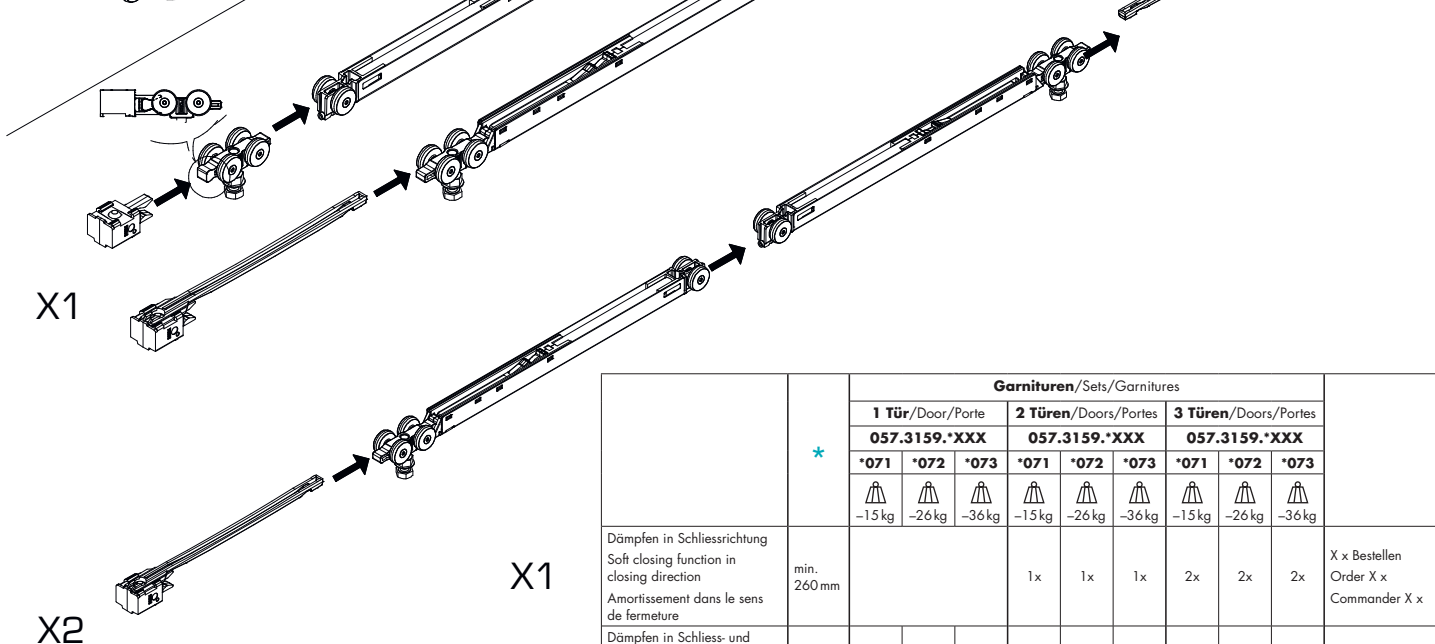
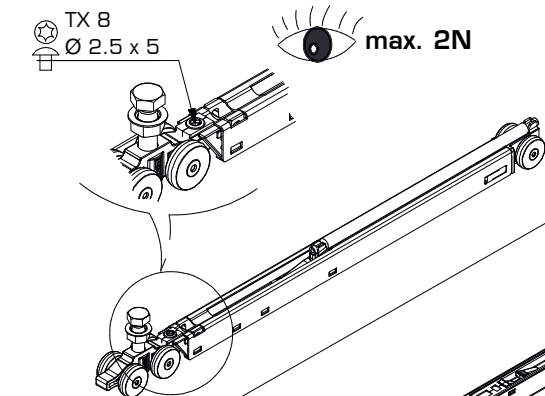
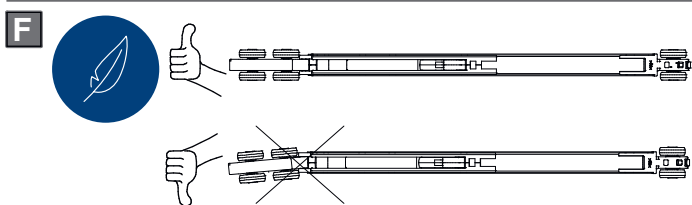
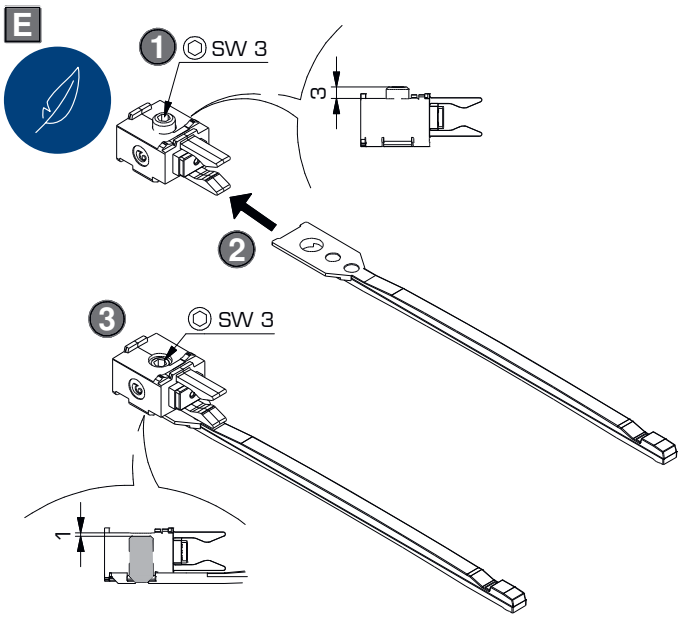
Befestigungsvarianten A - E / Mounting options A - E / Variantes de fixation A - E: 4

- B**
- | | |
|--|-------------------|
| | 0 Stk.: X = 1 mm |
| | 1 Stk.: X = 32 mm |
| | 2 Stk.: X = 64 mm |



TB = 7
I / II / III = 7





G

Garnituren / Sets / Garnitures

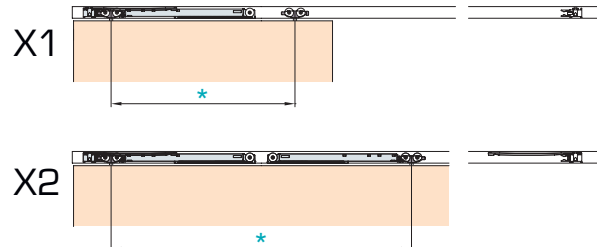
No. 057.3159.XXX

Empfehlung: Der Zugang zu den Dämpfungskomponenten sollte jederzeit möglich sein. Demontierbare Laufschienen oder Möbelkonstruktion entsprechend planen.

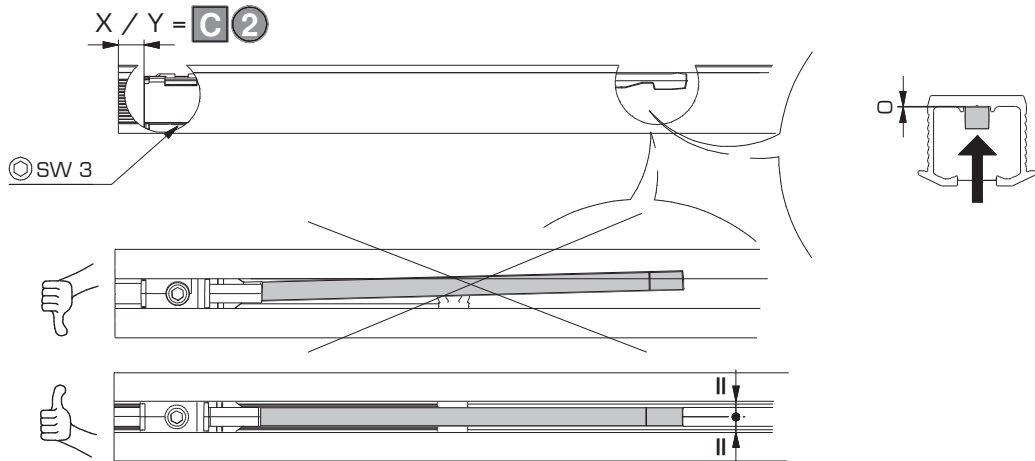
Recommendation: The access to soft-closing components should be possible at any time. Plan removable running tracks or furniture designs accordingly.

Recommandation: L'accès aux composants de l'amortisseur doit être possible à tout moment. Prévoir en conséquence des rails de roulement ou une constructions de meuble démontables.

	2x
	2x
	2x



	*	Garnituren/Sets/Garnitures									X x Bestellen Order X x Commander X x
		1 Tür/Door/Porte 057.3159.*XXX			2 Türen/Doors/Portes 057.3159.*XXX			3 Türen/Doors/Portes 057.3159.*XXX			
		*071	*072	*073	*071	*072	*073	*071	*072	*073	
		-15 kg	-26 kg	-36 kg	-15 kg	-26 kg	-36 kg	-15 kg	-26 kg	-36 kg	
Dämpfen in Schliessrichtung Soft closing function in closing direction Amortissement dans le sens de fermeture	min. 260 mm				1x	1x	1x	2x	2x	2x	
Dämpfen in Schliess- und Öffnungsrichtung Soft closing function in opening and closing direction Amortissement dans le sens de fermeture et d'ouverture	min. 460 mm	1x	1x	1x	2x	2x	2x	2x	2x	2x	X x Bestellen Order X x Commander X x

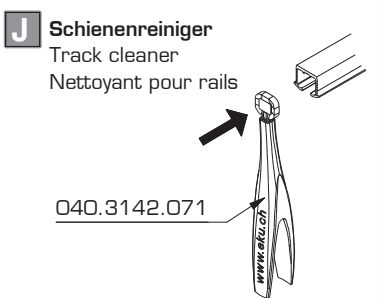
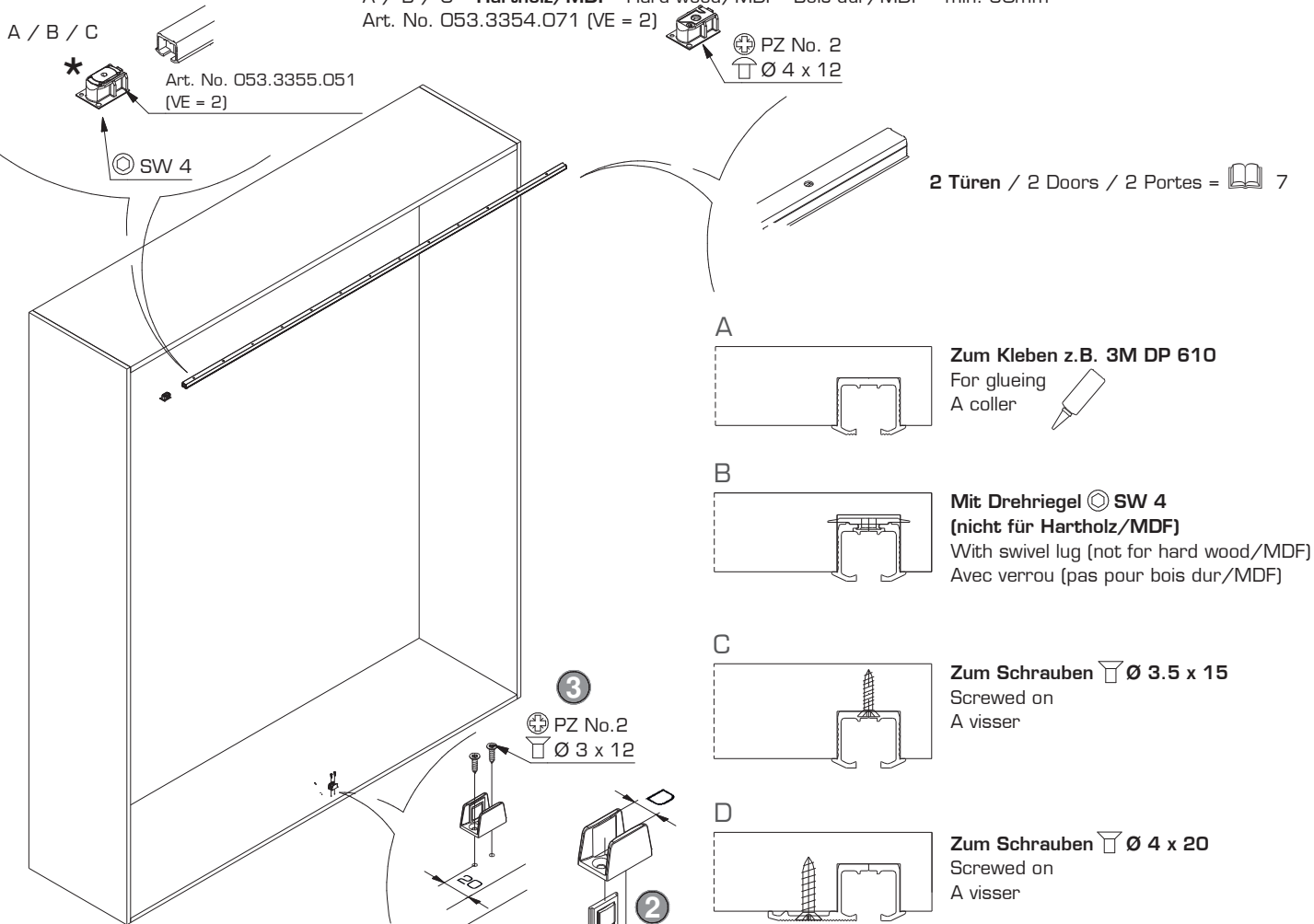


I

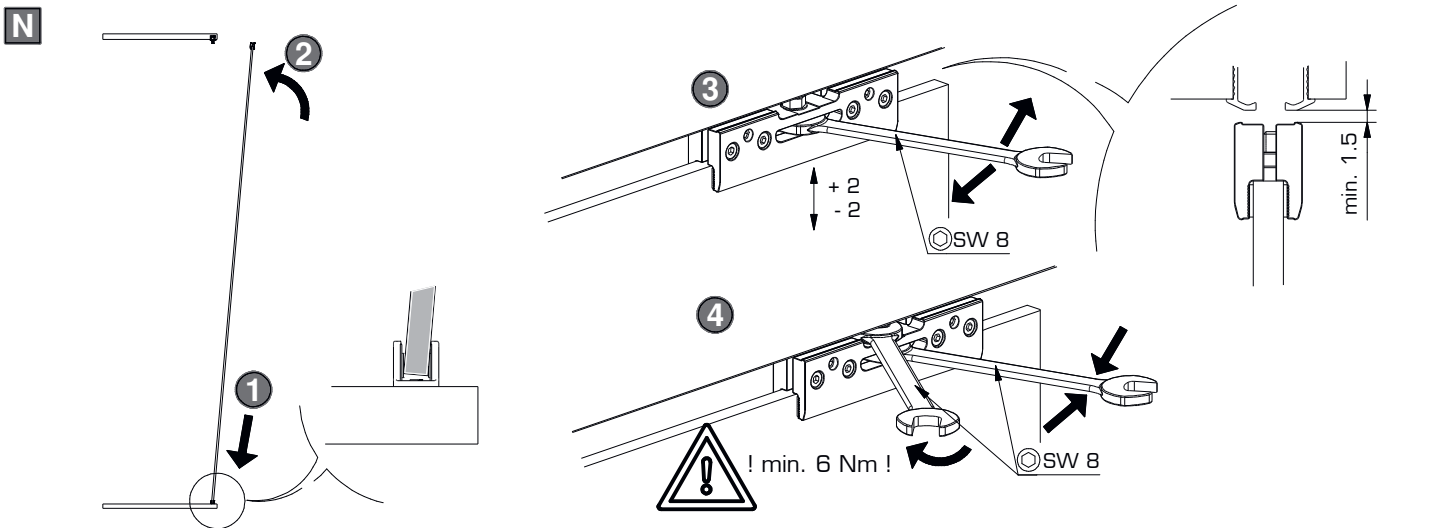
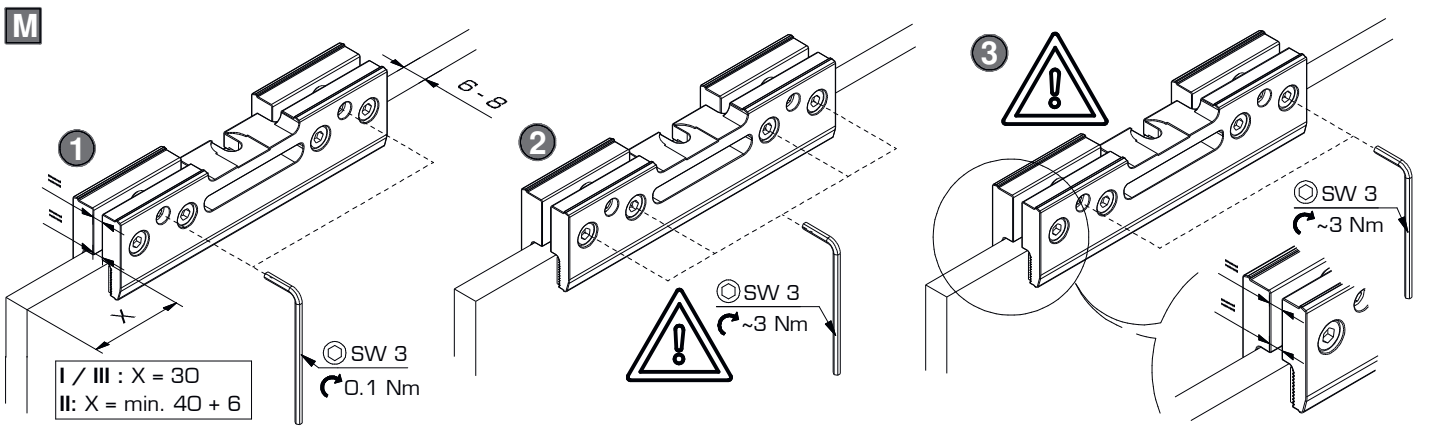
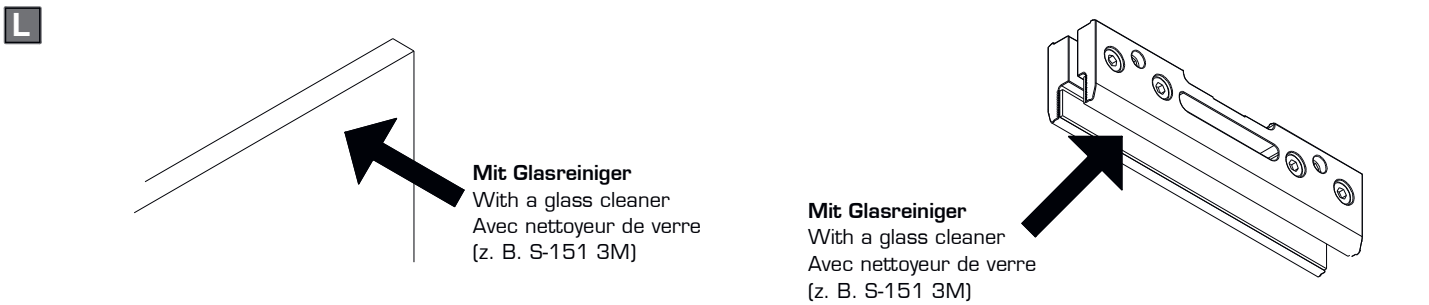
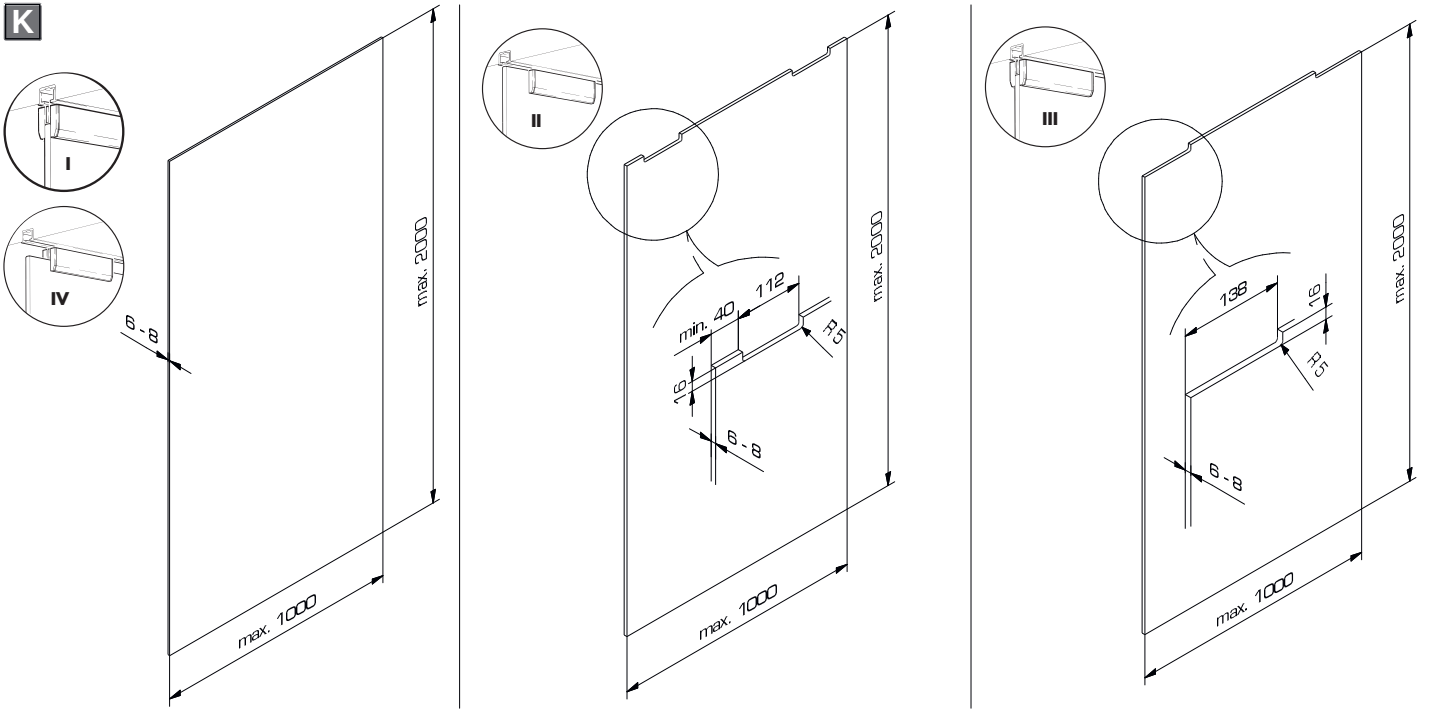


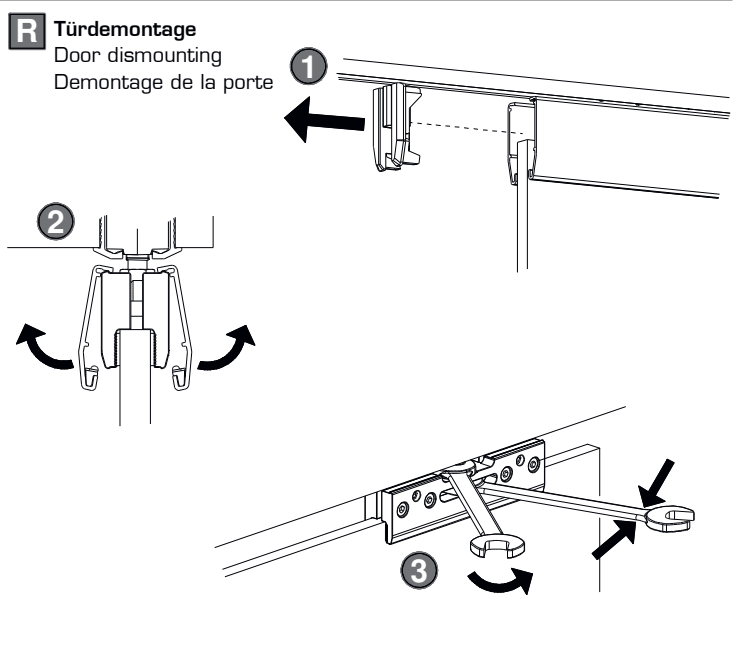
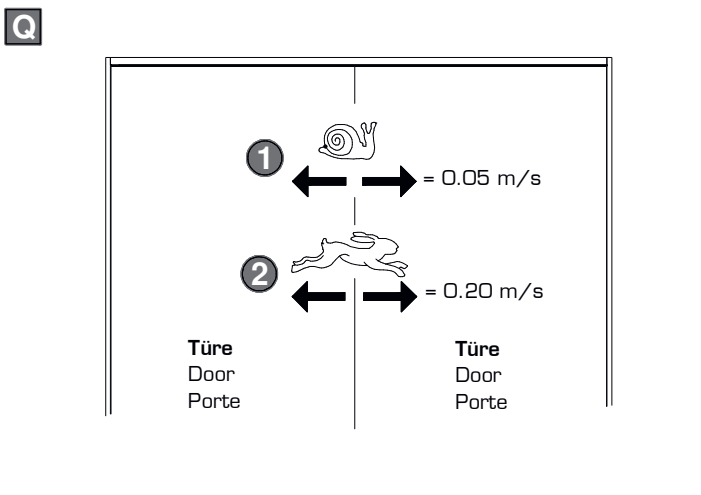
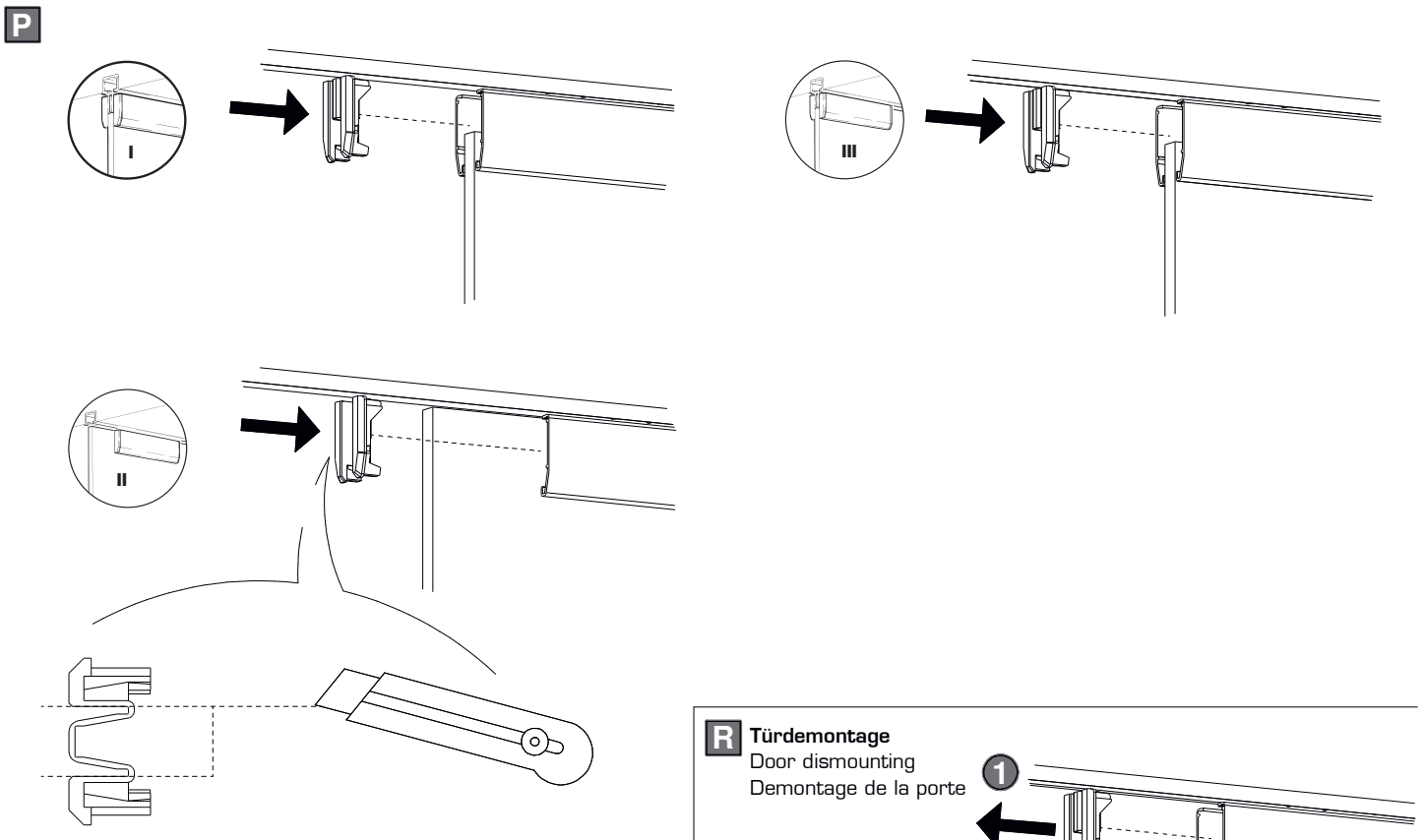
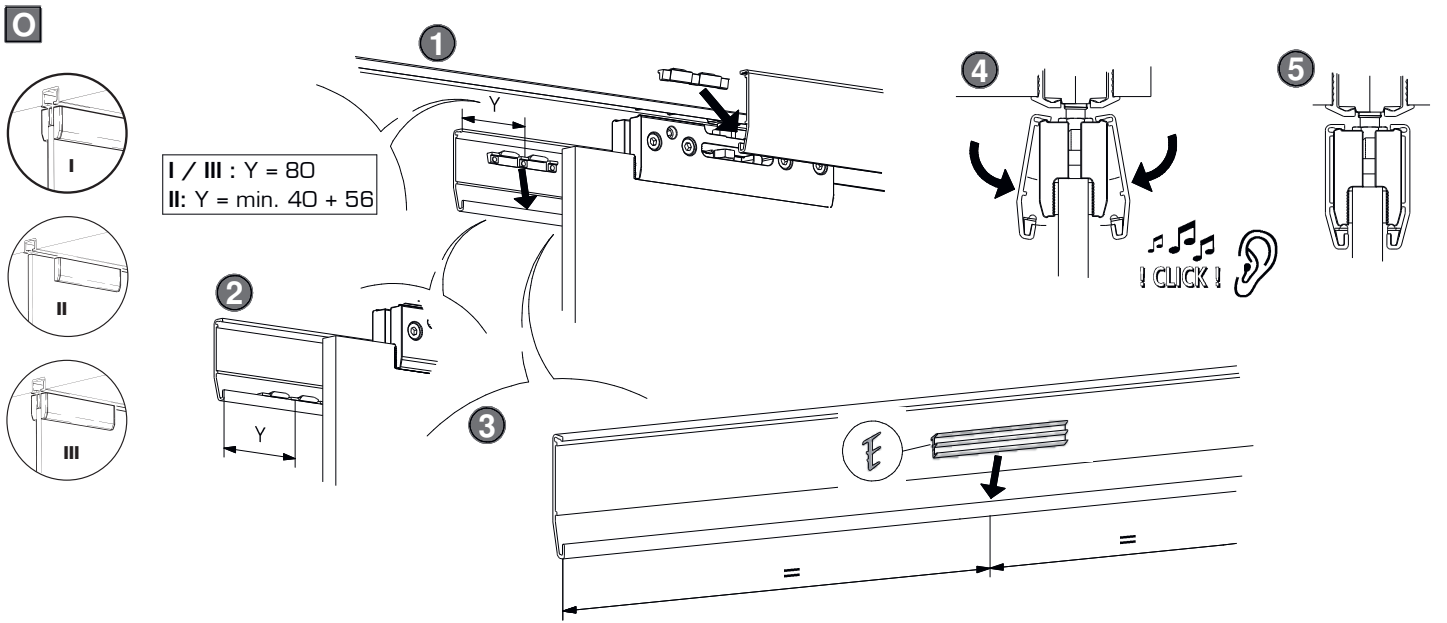
* Nicht für Hartholz/MDF
Not for hard wood/MDF
Pas pour bois dur/MDF

A / B / C = Hartholz/MDF - Hard wood/MDF - Bois dur/MDF = min. 30mm
Art. No. 053.3354.071 (VE = 2)

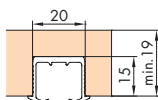


D	Combination mm
D = 6	4 + 8
D = 8	8 + 8

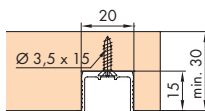




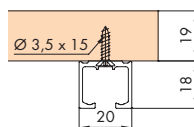
Einbaubeispiele/Mounting examples/Exemples de montage



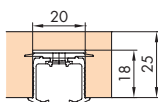
A zum Kleben
for glue fixing
à coller



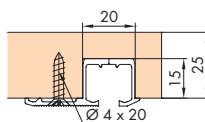
C zum Schrauben
for screw fixing
à visser



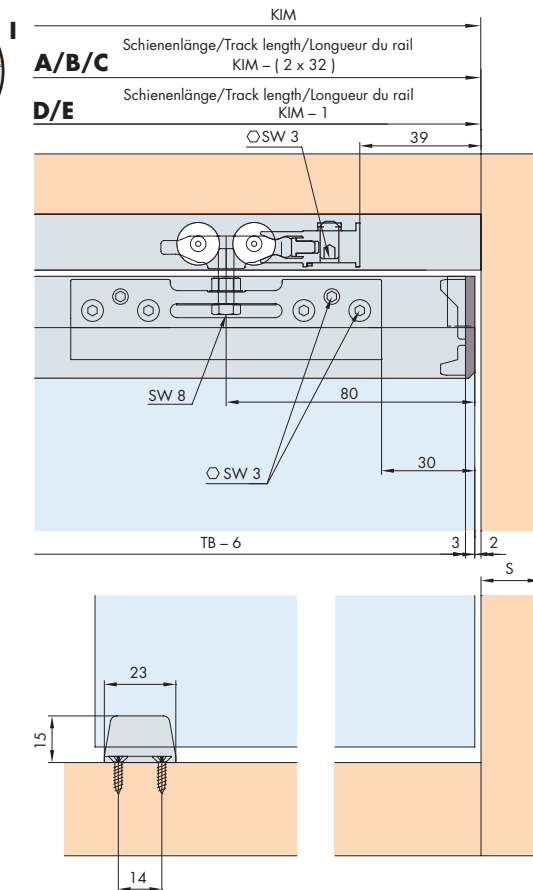
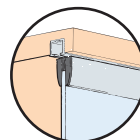
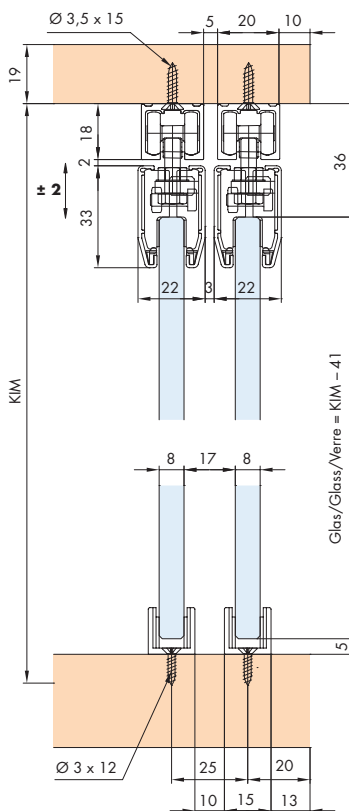
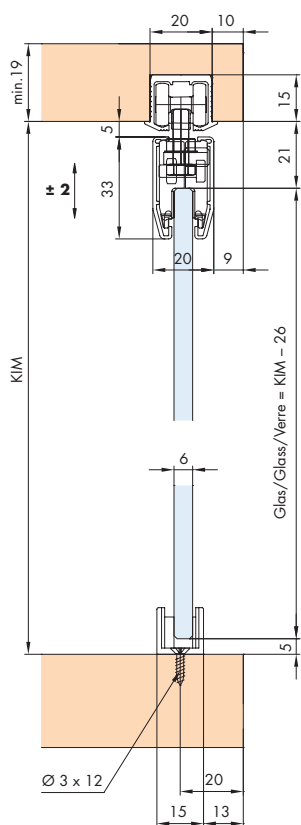
E zum Aufschrauben
for surface mounting
with screws
à visser en applique



B mit Drehriegel (nicht für Hartholz/MDF)
with swivel lug (not for hard wood/MDF)
avec verrou (pas pour bois dur/MDF)



D zum Schrauben
for screw fixing
à visser



Einbaubeispiele mit Glasbearbeitung

Mounting examples with glass processing
Exemples de montage avec usinage du verre

