



# TAG HARDWARE DESIGNER BAG

Experience the TAG Hardware difference. Encourage your customers to feel the difference of luxurious materials and fine engineering. Kindle a spark of joy as your customer delights in the coordinated finishes.

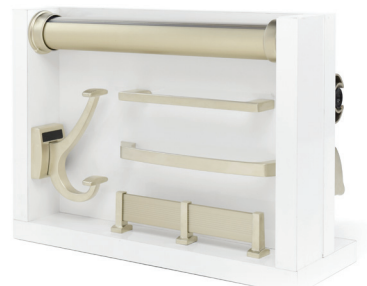
Take this valuable showroom experience direct to your client ... with the new TAG Hardware Designer Bag, complete with *Designer Inspiration Book*, double-sided Display Kit, product samples and swatches ... all in an easy-to-carry shoulder bag.



SHOULDER BAG  
+ EXTRA POCKETS FOR SAMPLES



DESIGNER INSPIRATION BOOK



DOUBLE-SIDED MOUNTED DISPLAY  
(SIDE A)



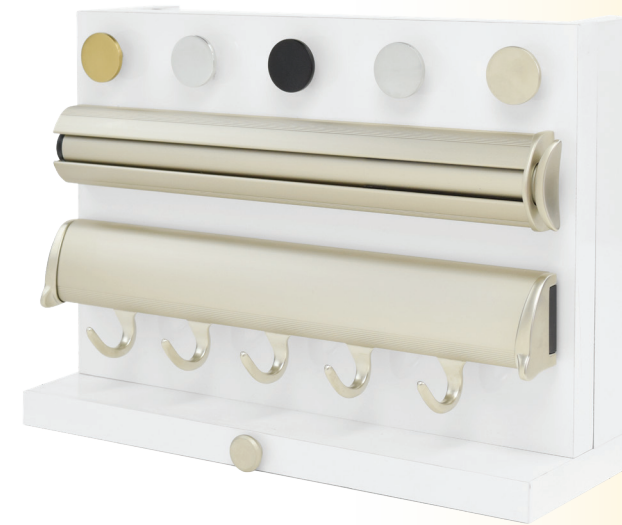
SYMPHONY SAMPLE



DECORATIVE HARDWARE  
+ FINISH SAMPLES



LEATHER & FABRIC SWATCHES



DOUBLE-SIDED MOUNTED DISPLAY  
(SIDE B)

## FEATURE FOCUS: DESIGNER BAG DOUBLE-SIDED DISPLAY

The Designer Bag includes the double-sided Display Kit, with popular hardware products mounted on a neutral white melamine table-top assembly.

This functional display showcases the operation of select products, such as the popular Elite Valet Rack, Belt Rack, and Valet Pin. The double-side display also comes with your choice of either the Signature or Elite Closet pole. This featured display is provided in the finish you select for the entire Designer Bag ensemble.

### SIDE A

- ELITE or Signature Pole (your selection)
- ELITE Compact Coat Hook
- ELITE Handle
- ELITE Arched Handle
- ELITE Shoe Fence

### SIDE B

- Decorative Knobs, displaying other finishes
  - ELITE Valet Rack \*
  - ELITE Belt Rack \*
  - ELITE Valet Pin \*
- \* functional products

## DESIGNER BAG ORDER DETAILS

WITH DOUBLE-SIDED DISPLAY

### WITH ELITE POLE

	<b>CR</b>	<b>MAL</b>	<b>SG</b>	<b>MNL</b>	<b>MG</b>	<b>BLK</b>
	<b>Chrome</b> 31.925.00.CR (732.31.765)	<b>Matte Aluminum + Chrome</b> 31.925.00.MALCR (732.31.766)	<b>Slate Grey</b> 31.925.00.SG (732.31.771)	<b>Matte Nickel</b> 31.925.00.MNL (732.31.767)	<b>Matte Gold</b> 31.925.00.MG (732.31.769)	<b>Black</b> 31.925.00.BLK (732.31.773)

### WITH SIGNATURE POLE

	<b>CR</b>	<b>MAL</b>	<b>SG</b>	<b>MNL</b>	<b>MG</b>	<b>BLK</b>
	<b>Chrome</b> 31.926.00.CR (732.31.760)	<b>Matte Aluminum + Chrome</b> 31.926.00.MALCR (732.31.761)	<b>Slate Grey</b> 31.926.00.SG (732.31.770)	<b>Matte Nickel</b> 31.926.00.MNL (732.31.762)	<b>Matte Gold</b> 31.926.00.MG (732.31.764)	<b>Black</b> 31.926.00.BLK (732.31.772)

## DESIGNER BAG UPGRADE

WITHOUT DOUBLE-SIDED DISPLAY

Already have the double-sided Display Kit? Upgrade to the complete Designer Bag ensemble, including more Decorative Hardware, Symphony Sample, Finish Samples, Leather and Fabric Swatches, and *Designer Inspiration Book*.

<b>Chrome</b> 31.927.00.CR (732.31.774)	<b>Matte Aluminum + Chrome</b> 31.927.00.MALCR (732.31.775)	<b>Slate Grey</b> 31.927.00.SG (732.31.779)
<b>Matte Nickel</b> 31.927.00.MNL (732.31.777)	<b>Matte Gold</b> 31.927.00.MG (732.31.776)	<b>Black</b> 31.927.00.BLK (732.31.784)

