

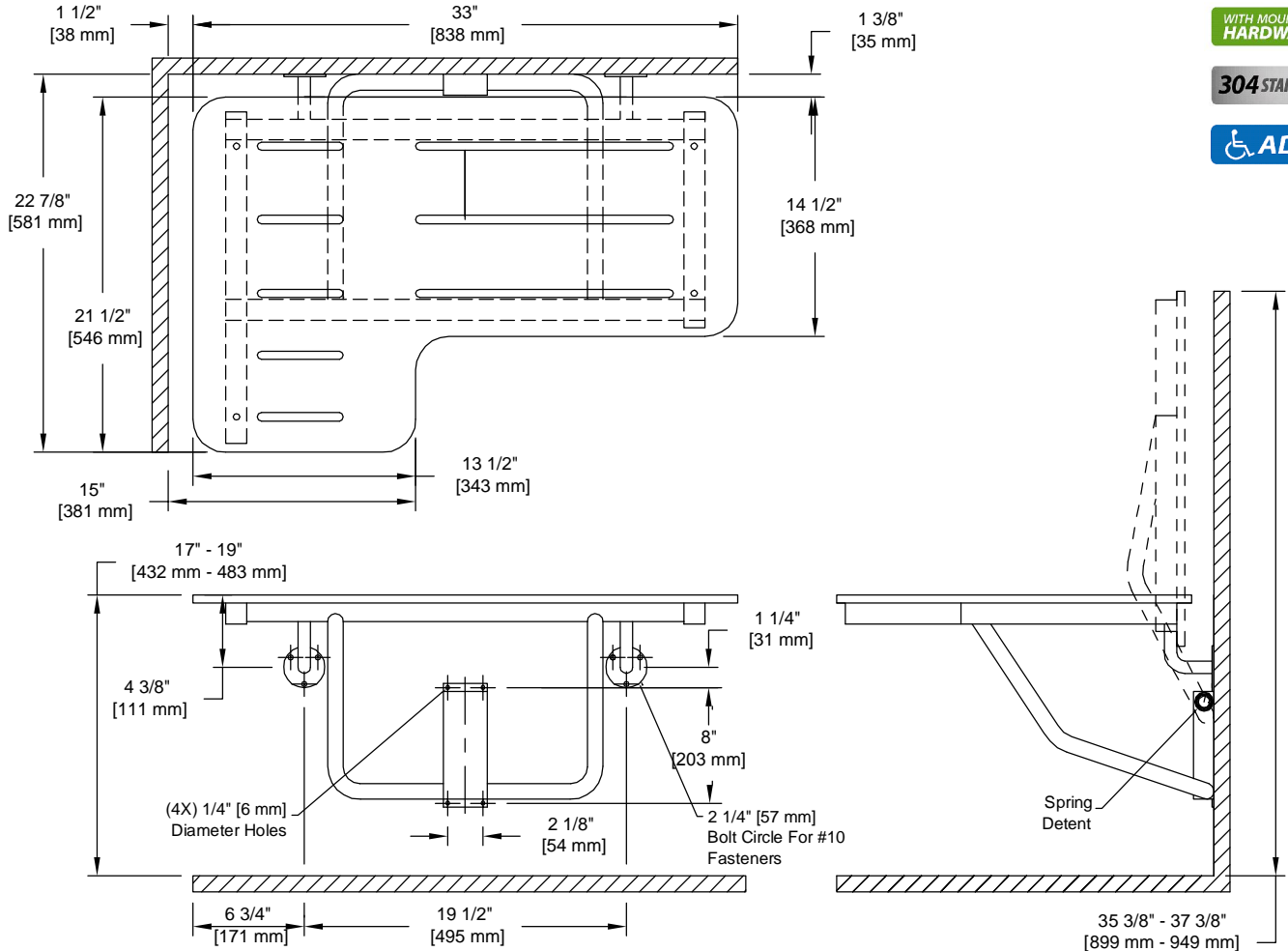
PRODUCT DATA SHEET

Product Description: Folding shower seat with a stainless steel frame and phenolic plastic seat. Installs in the back right side of a shower enclosure. Frame is fabricated from 304 grade stainless steel with a US32D brushed stainless steel finish. ADA compliant and designed to support loads in excess of 250 lbs when properly installed. For your safety, we recommend a professional installer or licensed contractor to install the folding shower seat. Ships with mounting hardware.

WITH MOUNTING
HARDWARE

304 STAINLESS

ADA



Overall Size: 33" W X 37 3/8" H X 22 7/8" D

Material: 304 Grade Stainless Steel, Phenolic Seat

Finish: US32D Brushed Stainless Steel

Cross Reference

Manufacturer	Part Number



Description:

**Folding Shower Seat,
Phenolic, Stainless Steel
Tubing (RH)**

Part Number:

19071

Date

10/20

Rev.

04

Sheet 1 of 1