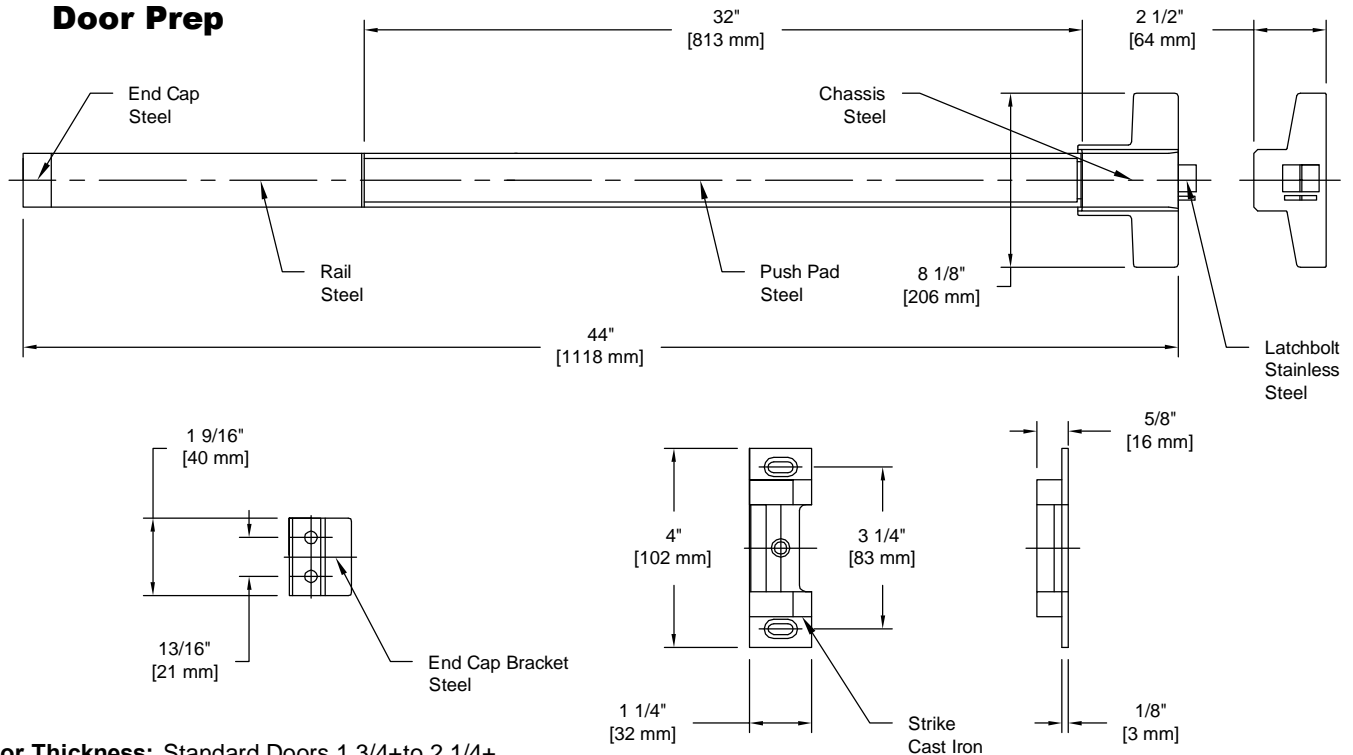


PRODUCT DATA SHEET

Product Description: Panic exit device, for 33" to 52" wide doors. UL10C 3 hour fire rated, ANSI A156.3 Grade 1. Non handed. Rail and push pad are fabricated from heavy gauge steel with a powder coated aluminum finish. Trim available in the following functions: classroom, storeroom, passage and dummy. Device and trim for 161 standard cut out. Mounting hardware and 239 strike included. ADA compliant. Ships with mounting hardware.

Designed For 161 Cut Out Door Prep



Door Thickness: Standard Doors 1 3/4" to 2 1/4"

Latch Bolt: Stainless Steel 3/4" Throw

Strike: 239 Standard

ANSI/BHMA: Exit Device: A156.3 Grade 1



Overall Size: 44" W X 8 1/8" H X 2 1/2" D

Material: Steel, Cast Iron, Stainless Steel

Finish: Powder Coated Aluminum

Cross Reference

Manufacturer	Part Number
CAL-ROYAL	F2200
CORBIN/RUSSWIN	ED8200A
DORMA	F8300
VON DUPRIN	22EO-F
YALE	2100



Description:

Panic Exit Device, Fire Rated, 44", Rim Type, UL10C, ANSI Grade 1

Part Number:

PE550048FP

Date

09/16

Rev.

03

Sheet 1 of 1