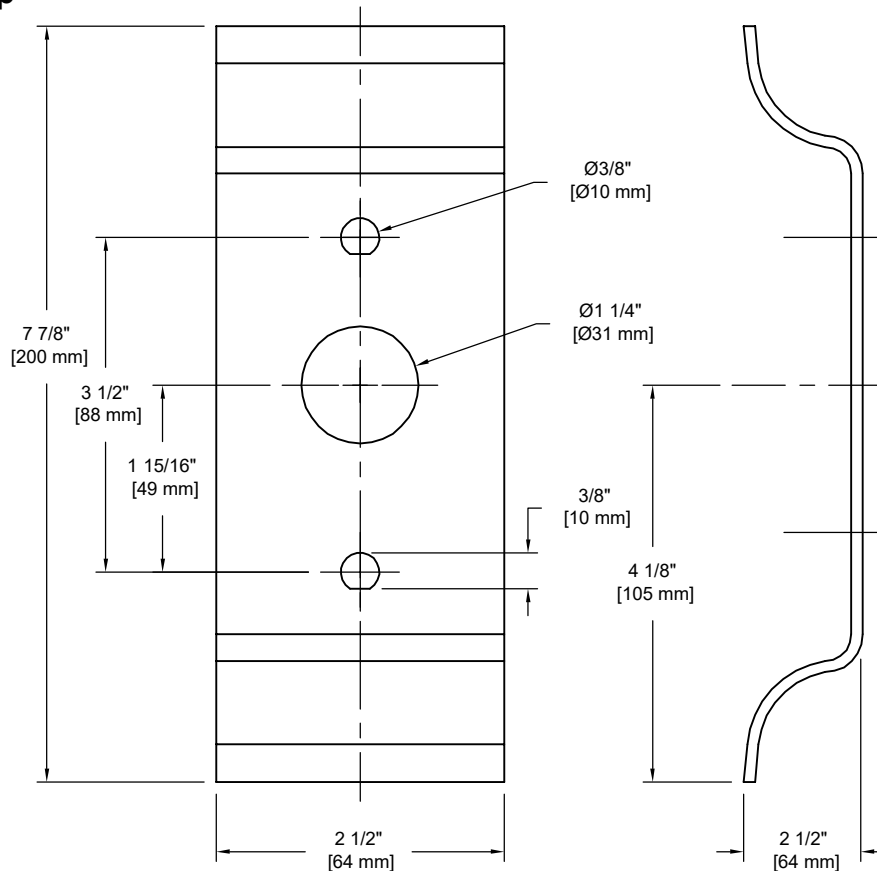


PRODUCT DATA SHEET

Product Description: Panic exit device pull trim. Fabricated from heavy gauge steel with a powder coated aluminum finish. Fits both UL fire rated and UL panic exit devices. Ships with a Schlage SC 4 cylinder and keys.

**Designed For
161 Cut Out
Door Prep**



Door Thickness: Standard Doors 1 3/8" To 2"

Cylinder: Solid brass 6-Pin Removable Core Schlage "SC 4 Keyway"



Overall Size: 2 1/2" W X 7 7/8" H X 2 1/2" D

Material: Steel

Finish: Powder Coated Aluminum

Cross Reference

Manufacturer	Part Number
CAL-ROYAL	2200NL



Description:

**Panic Exit, Device Pull Trim,
Schlage "SC 4"**

Part Number:

PET3000C

Date

09/16

Rev.

02

Sheet 1 of 1