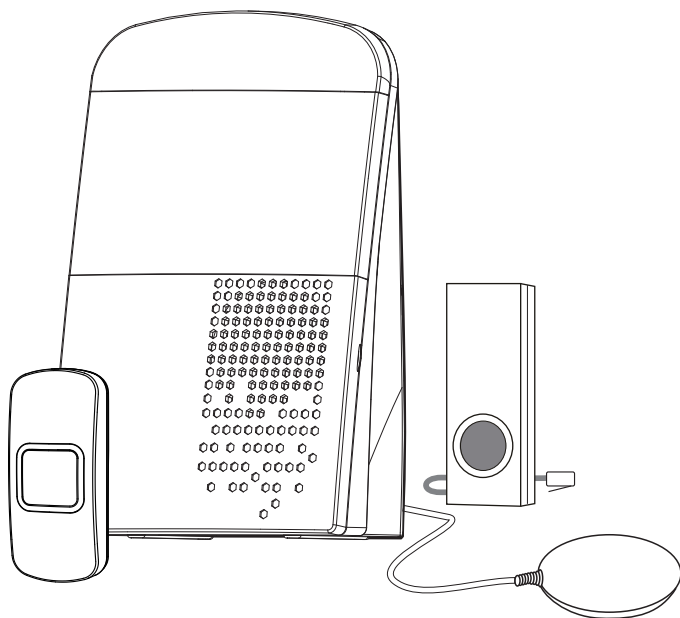


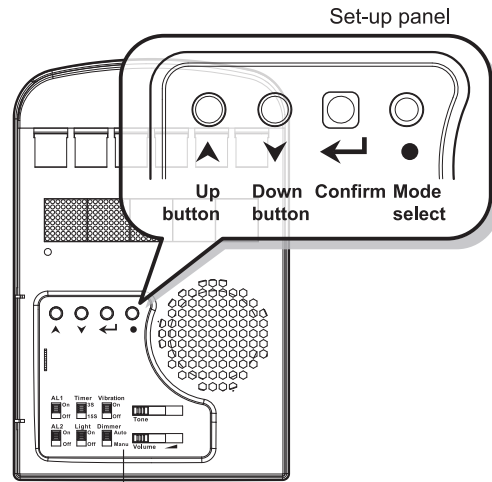
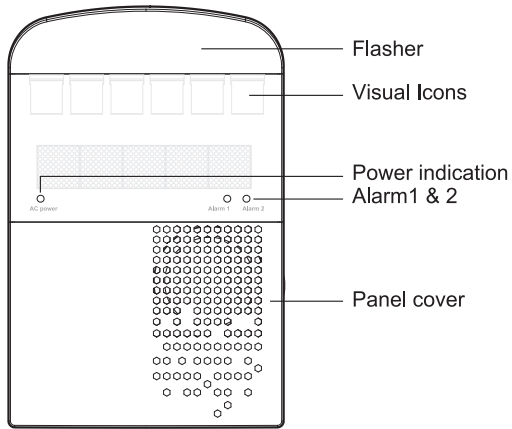
USER MANUAL

Notification System With Dual Alarm Clock

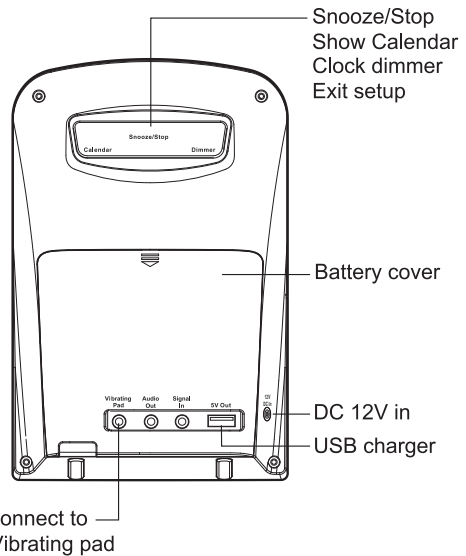
KNS360



About the KNS360

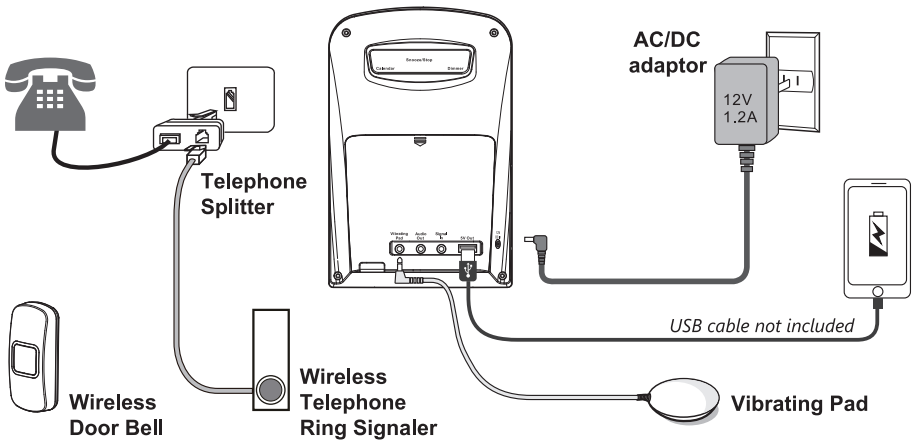


Function On/Off switches & Volume, sound tone control




Before use

- Connecting the alert system



Connecting to Main Power

- Connect AC/DC adaptor to the **DC Jack**  on the left side of the clock and plug into AC outlet

Connecting the Vibrating Pad

- Plug the Vibrating Pad into the '**Vibrating Pad**' jack  on the clock

Connecting the Telephone

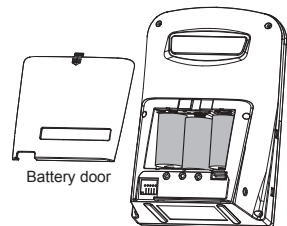
- Using the **telephone splitter** connect the phone and the **Wireless Telephone ring signaler** into the RJ-11 inputs
Plug the RJ-11 splitter into the phone line jack

☀️ The **KNS360** is now ready to use

☀️ Tips

Back up power

Install 'C' size batteries (Not included) for back up in case of AC power failure.

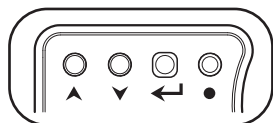


Before use

- Set the clock time and calendar date

Setting the date

- Open the front door to the setup panel
- Press the **Mode** ● button once
- The display show **SET CAL**, press **confirm** ⬅️ to start
- Press the **Up/Down** buttons to select the calendar year, press confirm to set
- Press the **Up/Down** buttons to select the calendar month, press confirm to set
- Press the **Up/Down** buttons to select the calendar day, press confirm to set and exit



Setting the clock

- Press the **Mode** ● button twice
- The display show **SET CLK**, press **confirm** ⬅️ to proceed
- 12↔24 hour format, press **Up/Down** to switch the arrow point to select 12↔24 HR format
- Press **confirm** ⬅️ to start the hour and minute setting, and the date setting
- Press the **Up/Down** to adjust the minutes, press **confirm** ⬅️ to set the minutes
- Press the **Up/Down** to set the hour, press **confirm** ⬅️ to set and start the clock running

Setting the Volume

- Press the confirm ⬅️ button to play the melody, then slide the volume knob to the desired level



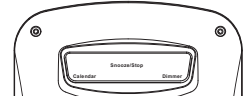
Setting the Alarms

- Press **Mode** ● button three times to set **Alarm 1**; Press four to set **Alarm 2**
- Press confirm ⬅️ to start the setup of the Alarm time
- Press **Up/Down** to adjust the minutes of the alarm, press **confirm** ⬅️ to set then press **Up/Down** to set the hour, press **confirm** ⬅️ to set
- To set the Alarm melody, press **Up/Down** to listen the melody press confirm ⬅️ to set
- Press **Up/Down** to turn the vibrating pad On/Off, press Up to turn 'VIB:√' (on) press Down to turn 'VIB:X'(off). Press **confirm** ⬅️ to set
- Press **confirm** ⬅️ to next two output trigger on/off set-up, if you don't need, please press **confirm** ⬅️ twice to exit

How to use

To show the Date

- Press the calendar button once, the date will display for 10 seconds



Turning the Alarm(s) On/Off

- Open the front door, find the Alarm1 and Alarm2 switch On/Off
- with the Alarm switch on the 'Alarm' indicator below the clock will light up

Turning the vibrating pad On/Off

- Place the vibration on/off switch in the desired position.

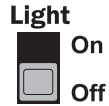
Adjusting the clock brightness control

- With the "Dimmer" switch in the 'Auto' position, brightness will adjust automatically
- With the switch in the 'Manual', press the Snooze/Dimmer button to select 1 of 3 brightness settings



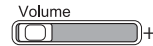
Turning the flash alert On/Off

- Set the Light switch to the On or Off position



Turning the alert sound Off

- Slide the volume knob to the far left



Using the Snooze function

- Press the Snooze button once to mute the alarm for 10 minutes;
- Press once again to stop the alarm completely

Charge your connected device

- KNS360 provides an 5V/1A USB socket for your convenience

Customizing the tone of the alarm/alert melody #32

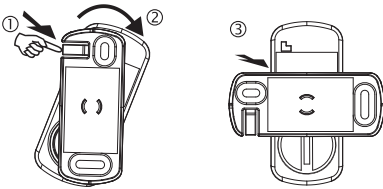
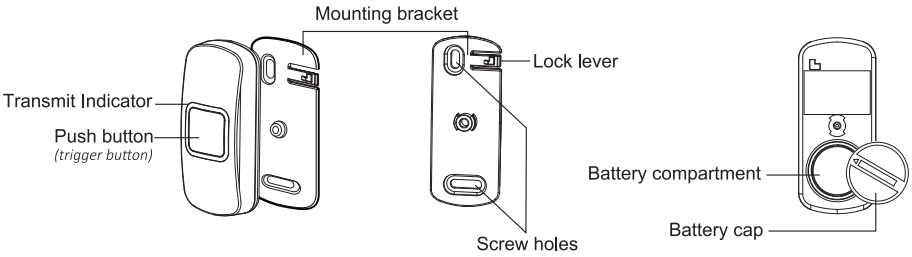
- Slide the tone button left or right to vary the frequency of the alarm/alert melody #32



About the sensors

Wireless Door Bell:

Parts & Function

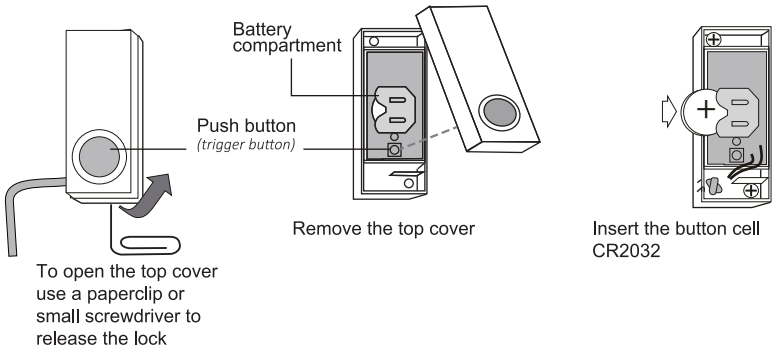


Sperate the Wireless Door Bell from the bracket

- ① To release the lock lever rotate the bell counter-clockwise 90°
- ② Pull out the button assembly

Wireless Telephone Ring Signaler:

Parts & Function



Connect a sensor(s)

- Sensors that come with KNS360 are paired at the factory and are ready to use

If you need to customize, please follow the steps below

Unpair the sensor

- Press the **Mode** ● button five times
- The display shows **PAIR** , press **confirm** ← to start
- The display shows Zone:1, press **Up** to stop at the Zone you're going to clear
- Then press both Up and Down buttons for seconds till you listen a beep tone
- Release the buttons, you see the “:” changed to “-” sign
- The sensor was on the Zone was cleared, **confirm** ← to exit

Pair a new sensor with the KNS360-CK

- Press the **Mode** ● button five times
- The display reads **PAIR** , press **confirm** ← to enter
- Select the Zone pressing **Up** / **Down** to stop at the Zone you want to pair the sensor
- Press and hold the **trigger** button on the sensor until the display shows **LINKED**
- After successful pairing the display shows the name of the sensor ,
- If want to change the name the sensor, press **Up** / **Down** to choose from other options, press **confirm** ←
- The display shows the default melody first, press Up / Down for other melody options,
- Choose “None” to set this sensor on silent
- Press **confirm** ← to complete and exit

☀ *When triggering the sensor, the display shows the Zone number instead of **LINKED** , this means the sensor being paired was paired to another Zone, please clear the sensor and retry the pairing operation.*

Generating a new code for a sensor(s)

☀ *When connecting a new sensor, the display always shows another Zone number, this means another sensor on that Zone may be running the same code as the new sensor, please follow the steps below to change the code of your new sensor*

- Remove the battery from a sensor
- Press and hold the trigger button, insert the battery
- Keep pressing and hold the trigger button for 5 seconds
- A new code is generated after the LED flashes 5 times
- Redo the operation for pairing a new sensor

External connection

KNS360 provides some output terminal for special application

Signal In:

This is an external 3-12V DC input trigger.

Signal In



Audio Out:

This is audio signal output to the external alarm or audio induction loop system.

Audio out



Normal Open (NO) terminal:

This 2-pin terminal is normally open circuit, it will close the circuit when the receiver is triggered. The duration depends upon the timer setting

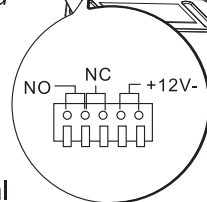
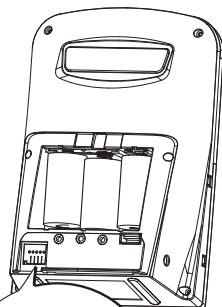
Normal Close (NC) terminal:

This 2-pin terminal is a normally close circuit, it will open the circuit when the receiver is triggered. The duration depends upon the timer setting

Normally open and normally closed cannot be connected together (The rating cannot exceed 48V/500mA)

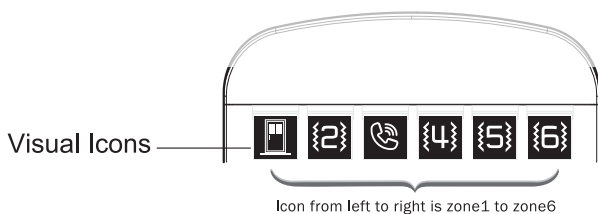
12V out terminal:

This 2-pin terminal provides 12V to drive external device when the receiver is triggered. The duration depends on the timer setting. Please noted the current of the external device cannot exceed 200mA

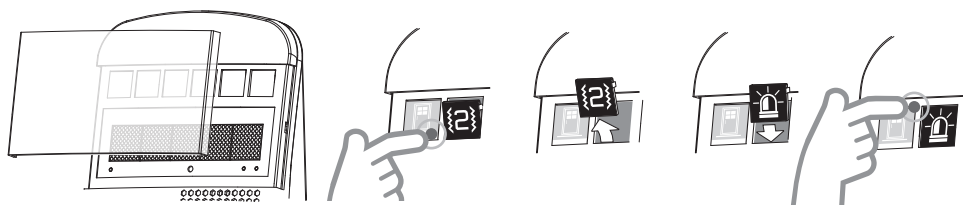


Connecting icon(s) with a sensor

- KNS360 provides 6 visual icons which correspond with the zones, When you rearrange or add the new sensor to a zone, you can also change the icon to match.



Change the visual icon(s)



① Take off the lens

② Push the plate's bottom to get it goes out

③ Take it out from the top

④ Insert the new one from the top

⑤ Push the top to fix

Power indication

- When connecting to the power, the clock will blink, press the Snooze to stop blinking
- When operating on battery power, the LED of AC Power turns off
- When operating on battery power, the vibrating pad, USB charger and 12V output will not function.
- When the batteries are low and need to be replaced the display shows "BattLo" **BATTLO**.
- When the Zone icon blinks this means the sensor for that icon has a low battery and needs to be replaced.

Reference

Default sensor's name and melody

SENSOR NAME	Default	Option	Option	Default Melody
Door Bell	Bell	D. Bell	Knock	1
Door/window Sensor	Window	Door	Invade	28
Mailbox Sensor	Mail	M. Box	Letter	12
Fall sensor	Fall AI	Pad	Help	29
Flood detector	Flood	Empty	Full	14
Toilet pull sensor	Toilet	Help	Slip	27
Magnet sensor	Magnet	Steal	Lost	17
Entry mat	Mat	Escape	Enter	15
PIR/Driveway sensor	PIR	Road	Invade	13
Sound sensor	Baby	Cry	Sound	31
Telephone ring transmitter	Phone	Ring	Call	19
Garage door	Garage	Open	G.Door	6
Gas detector	Gas	Danger	Alarm	10
T3	Smoke	Danger	Fire	13
T4	CO	Danger	Fire	13

MAINTENANCE

- For best results, use good quality batteries.
- Always replace old or weak batteries.
- Do not use cleaning solvents on electronic products. Solvents contain chemicals that can damage electronic circuitry.
- Do not expose the receiver unit to rain or immerse in water.

WARNING

The manufacturer is not responsible for any radio or TV interference caused by unauthorized modifications to this equipment.

FCC Statement:

This equipment has been tested and found to comply with the limits for a Class B digital device, pursuant to part 15 of the FCC Rules. These limits are designed to provide reasonable protection against harmful interference in a residential installation. This equipment generates, uses and can radiate radio frequency energy and, if not installed and used in accordance with the instructions, may cause harmful interference to radio communications.

However, there is no guarantee that interference will not occur in a particular installation. If this equipment does cause harmful interference to radio or television reception, which can be determined by turning the equipment off and on, the user is encouraged to try to correct the interference by one or more of the following measures:

- * Reorient or relocate the receiving antenna.
- * Increase the separation between the equipment and receiver.
- * Connect the equipment to an outlet on a circuit different from that to which the receiver is connected.

This device complies with part 15 of the FCC rules. Operation is subject to the following two conditions: (1) This device may not cause harmful interference, and (2) this device must accept any interference received, including interference that may cause undesired operation.

Note: Modifications to this product will void the user's authority to operate this equipment.



3408 Indale Road, Fort Worth, Texas 76116
Voice/TTY: (817)738-2485 Fax: (817)738-1970
Email: info@KrownMfg.com
Web Site: www.krownmfg.com
1 Year Manufacturer Warranty