

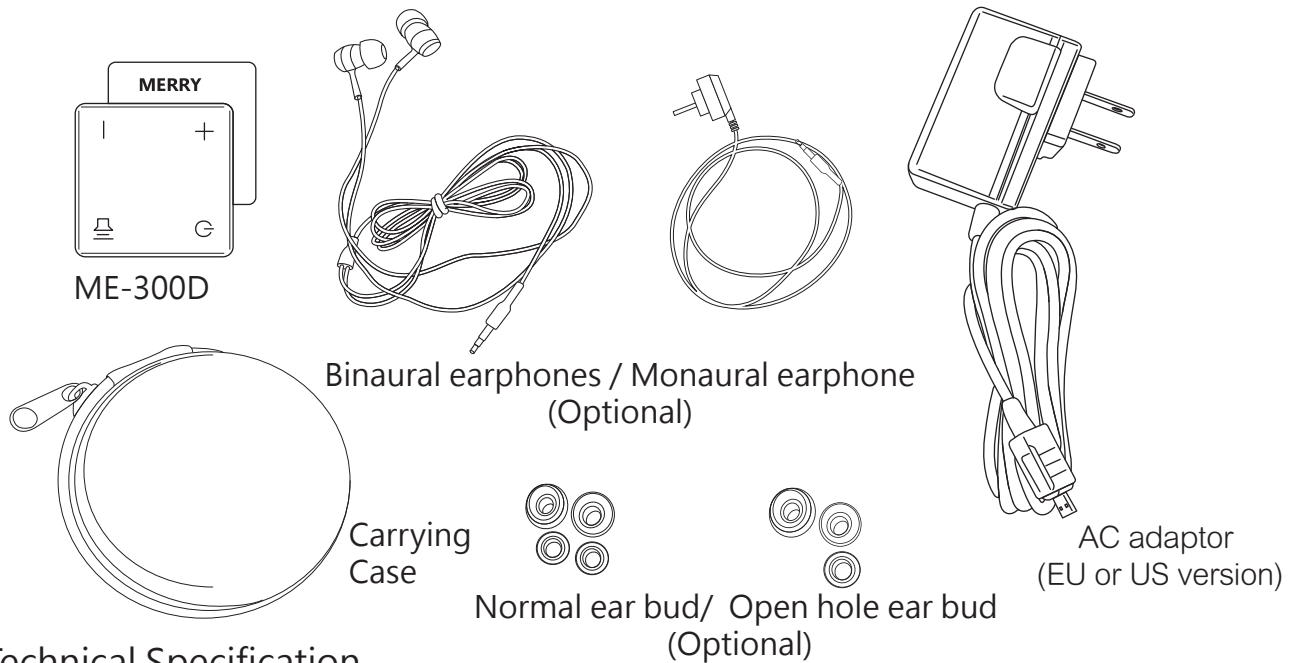
Concerto  
Sounds & Clear

My Personal Sound Amplifier

Model No.: ME-300D



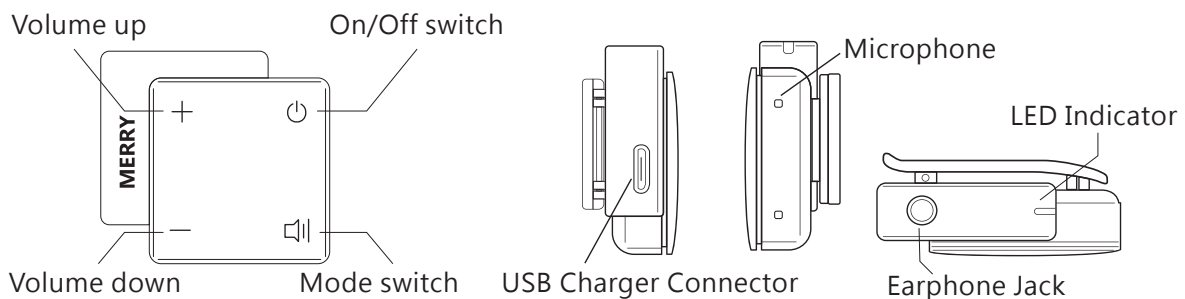
## Inside package



### Technical Specification

Max Sound Pressure Level at 90 dB input (OSPL90):	115 dB SPL
Max Full-on Gain (FOG):	47 dB
Size:	32.5(H)*36(W)*14.4(D) mm
Weight:	18.3 g (earphone not included)
Power Supply: Battery	3.7V Li-ion battery
Capacity	80mAh
Average power consumption	3.2mA
Operating time	20 hours
Charging cycle	more than 500 times
Charging time	1 hour

## Functions



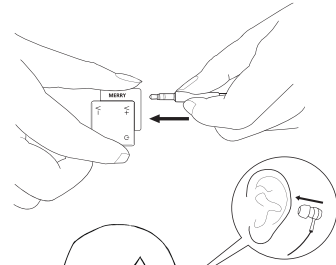
## Thank you for choosing ME-300D

MERRY ME-300D personal hearing device has a built-in Li-ion rechargeable battery. Do not disassemble this battery or attempt to repair or modify it in any manner. When the battery is first put on charge, it is better to fully charge them. Warning: Keep the battery away from high temperature environment, including intense sunlight heat. When the battery is put on charge, keep them at the temperature range from 5°C to 40°C

# How to use

## A.Plugging the earphone

Insert stereo earphone into control box.

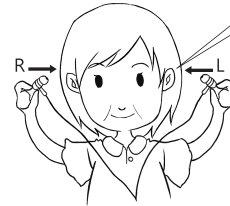


## B.Wearing earphones

Put the earbuds in your ear.

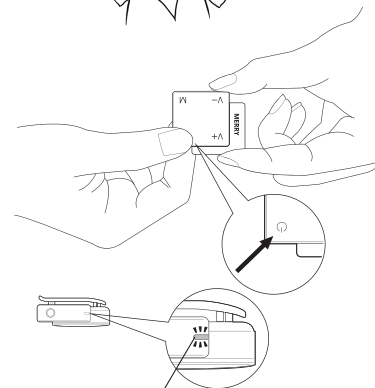
Mark "L" represents left side.

Mark "R" represents right side.



## C.Powering on

Press the "On/Off Switch" button for 3 seconds to turn on your control box.



LED Indicator

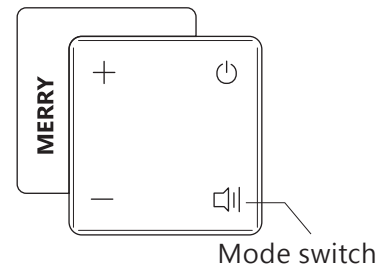
## D.Mode switching

Mode 1: Quiet Mode. (1 beep)

Mode 2: General Mode. (2 beeps)

Mode 3: Clear Mode. (3 beeps)

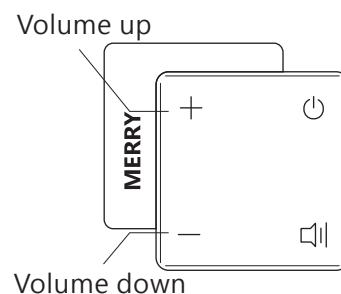
Mode 4: TV Mode. (4 beeps)



Mode switch

## E.Volume control

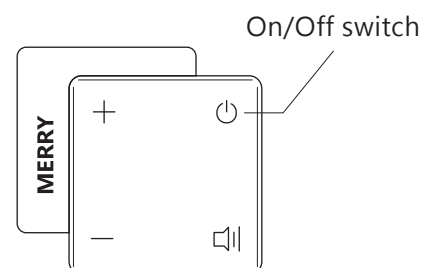
Press "+" or "-" to adjust the level of volume .



Volume down

## F.Turning the power off

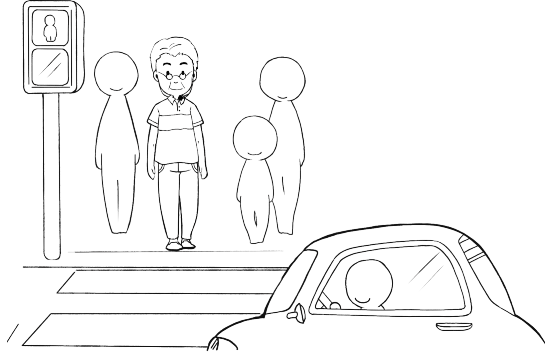
Press the "On/Off Switch" button for 3 seconds to power off the ME-200P. When the power is off, the LED indicator light will be turned off.



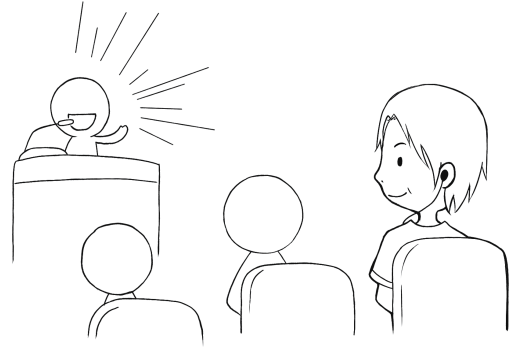
On/Off switch

## Situation

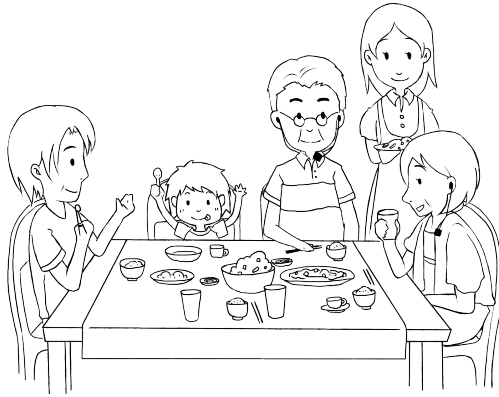
**Mode1** **Quiet Mode:**  
Minimizing ambient noises from the environment.



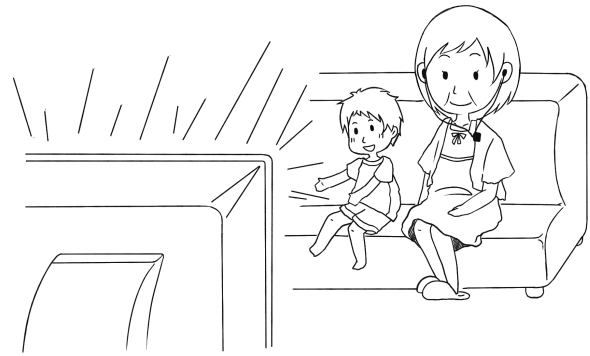
**Mode3** **Clear Mode:**  
Reducing ambient noises for quieter performance.



**Mode2** **General Mode:**  
Emphasizing on human voice to make speech clearer. This mode is recommended for daily use.



**Mode4** **TV Mode:**  
Amplifying both high and low frequencies. This mode is ideal for watching TV and listening to music.



## LED Indicator

The color of LED indicator illustrates the power status of ME-300D.

	Status	Color of LED Indicator
Power on	Normal power	Green
	Low battery	Orange
	Charging	Blue
	Fully charged	Green
Power off	Not charged	Off
	Charging	Blue
	Fully charged	Off

## Troubleshooting

Question	Solution
No response after pressing On/Off switch	If you encounter some operation problems with the ME-300D, please check the following items first: ▲ Is your ME-300D powered up? ▲ Are your ear buds blocked by ear wax? Clean your ear buds with a cotton swab if necessary.
High-pitched noises inearphone	Insert ear buds tightly into ear canal. Reduce volume or increase the distance between the earphone and the microphone of control box.

## Please note

- ※ Our Product is not hearing aid. If you have any hearing problem please see doctor for advice.
- ※ This symbol indicates that integral electrical equipment must not be treated as household waste. It should be taken to the relevant collection depot for the recycling of electrical and electronic equipment. You can obtain more detailed information about recycling of the product from your local authorities, from the nearest recycling station or from the shop you purchased the product from.



## Warning

- ▲ If you experience ringing in your ears or muffled speech, stop listening and have your hearing checked.
- ▲ Please keep the ME-300D away from children and pets. In case a small child or pet swallows the ME-300D, please consult a doctor immediately.
- ▲ Do not use the ME-300D where it is forbidden to use electronic devices.
- ▲ Please keep the ME-300D away from fire (high temperature), water (humid environment), or any devices generating high voltage of electric current.
- ▲ Please use the AC adapter provided by Merry Electronics to charge your ME-300D.

Manufacturer  
MERRY ELECTRONICS CO., LTD  
No.22, 23rd Road, Taichung Industrial Park,  
Taichung, 40850 Taiwan, R.O.C.  
Hear@merry.com.tw