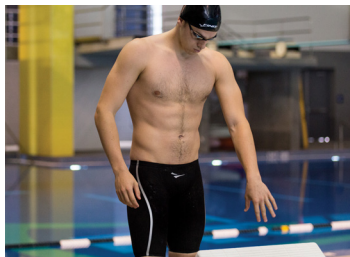


RIVAL | ELITE TECHNICAL RACING SUIT

OPEN BACK KNEESKIN: 1.10.021
CLOSED BACK KNEESKIN: 1.10.028
JAMMER: 1.10.125
SWIMWEAR / TECHNICAL

Designed for competitive athletes with a balance between compression, support, and flexibility to lock and lift the hips into perfect body alignment



TWO-WAY STRETCH FABRIC

Focuses on flexibility by supporting the curved areas of the body, such as the hips and chest



COMPRESSION IN THE RIGHT AREAS

Compression placed in areas to conform and streamline the body, thus reducing drag



EVERY SEAM HAS A REASON

Seams are placed to complement and strengthen the fabrics, while enhancing compression in adjacent areas



ELITE FIT

Designed for competitive athletes with a balance between compression, support, and flexibility



WATER REPELLENCY

A hydrophobic coating is applied and creates that cool "water beading effect" we all love



COMPRESSIVE DUAL-PANELING

Features a unique liner fabric – each panel is customized to match the stretch characteristics of the outer fabric



PRODUCT DESCRIPTION

Constructed using two fabrics – the one-way stretch fabric increases compression and the two-way stretch fabric allows optimal range of motion. The combination of the two fabrics supports muscles and enables muscle efficiency. Seams are strategically placed to strengthen the bond between fabrics and enhance compression in adjacent areas. Designed in California at the FINIS Stroke Lab.



DESIGNED IN CALIFORNIA



COLOR WAYS & STYLES



OPEN BACK
KNEESKIN
[177]



CLOSED BACK
KNEESKIN
[177]



JAMMER
[177]

● BLACK [101] *NOT PICTURED