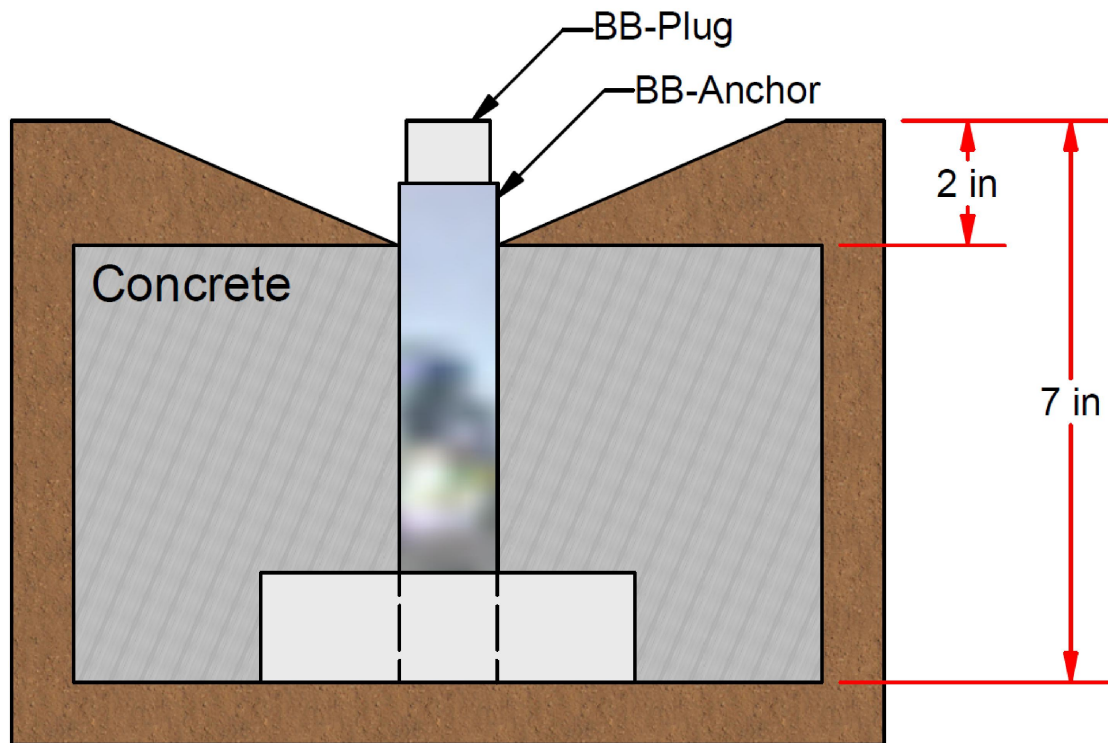
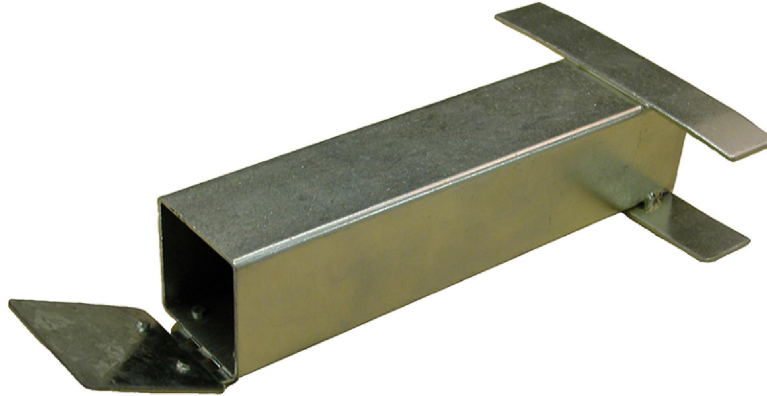


BB-ANCHOR - BASEBALL ANCHOR



- > COMPATIBLE WITH BB-200, BB-400, BB-500, HP-200, AND MORE
- > FITS 1 1/2" STANCHION
- > 6" LENGTH
- > USE BB-PLUG TO PREVENT DIRT FROM GETTING INSIDE



BB-ANCHOR

1 1/2" Flared Baseball Anchor

© COPYRIGHT 2022 JAYPRO SPORTS, LLC. ALL RIGHTS RESERVED THIS PRINT IS THE PROPERTY OF JAYPRO SPORTS, LLC. AND MAY NOT BE REPRODUCED WITHOUT WRITTEN PERMISSION

www.jayprosports.com
(800) 243-0533
976 Hartford Turnpike
Waterford, CT 06385 USA

Rev:

SHEET 1 OF 2