



--- Line Drive Batting Cage ---
BBLD-5000



Call Jaypro Sports Equipment at 1-800-243-0533 during regular business hours for technical support.

www.jaypro.com

JAYPRO SPORTS
BBLD-5000 The Line Drive

IMPORTANT NOTICE:

1. INSPECT ALL PARTS FOR DAMAGE. REPORT ANY DAMAGES TO THE TRUCKING COMPANY.
2. BEFORE EACH USE CHECK EQUIPMENT FOR PROPER CONNECTING HARDWARE AND STRUCTURAL INTEGRITY. REPLACE DAMAGED OR MISSING HARDWARE IMMEDIATELY.
3. SECURELY TIGHTEN ALL NUTS AND BOLTS.
4. **NEVER** ALLOW ANYONE TO RIDE ON BATTING CAGE DURING TRANSPORT.
5. USE OF THIS EQUIPMENT OTHER THAN INTENDED MAY BE HAZARDOUS.
6. ALTERATION OR MODIFICATION OF THIS EQUIPMENT MAY BE HAZARDOUS AND RESULT IN INJURY. FOR REPAIR OR REPLACEMENT, CONTACT YOUR DEALER OR JAYPRO SPORTS.
7. FRONT COVER PHOTO SHOWN WITH OLD REAR WHEEL DESIGN THAT HAS BEEN IMPROVED.

LIST OF RECOMMENDED TOOLS & SUPPLIES

| ITEM | DESCRIPTION |
|------|--|
| 1 | BOX WRENCHES, ADJUSTABLE WRENCHES, OR SOCKET SET |
| 2 | 3/16" OR 7/32" ALLEN WRENCH |
| 3 | RUBBER MALLET |
| 4 | 8 FT OR 10 FT STEP LADDER |
| 5 | RAGS, CLEANING SOLUTION |

HOW YOUR BBLD-5000 IS RECEIVED VS. LIST OF MATERIALS

| PACKAGE | ITEM NUMBERS IN LIST OF MATERIALS (NEXT PAGE) |
|---------------|---|
| BBLD-5DRJ | 10 |
| BBLD-5BCJ | 9 |
| BGLC-75STRUTS | 11 |
| BBLD-5SP | 7 |
| BBLD-5BPS | 6, 8 |
| BBLD-5BPM | 5 |
| BBLD-5BPL | 4 |
| BBLD-5K | 14, 15, 16, 18, 20, 23, 24, 26, 28, 30, 32 |
| BBGS18-RW | 1, 2, 3, 12, 13, 16, 17, 19, 22, 23, 24, 25, 27, 28, 29, 30, 31 |
| LDN-5 | NET |
| BBLD-5KF | FM0028 PADDING |

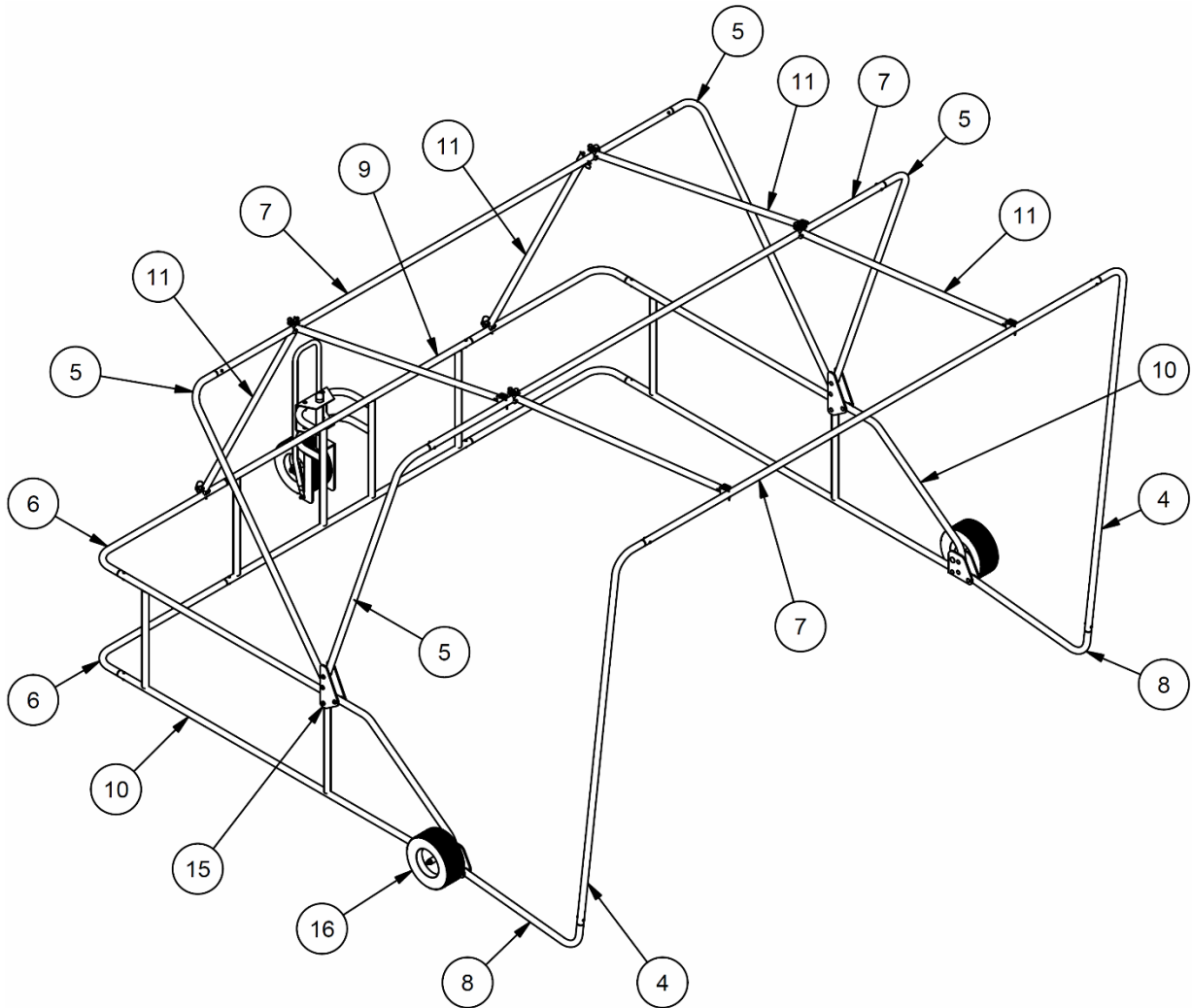
JAYPRO SPORTS
THE LINE DRIVE BATTING CAGE, BBLD-5000
LIST OF MATERIALS (MAIN FRAME)

| ITEM | QTY | PART NUMBER | DESCRIPTION |
|------|-----|----------------|--|
| 1 | 1 | BBGS18-3 | 1" OD x 3/4" ID x 1-5/16" LONG SLEEVE |
| 2 | 1 | BBGS1818 | REAR WHEEL ASSEMBLY |
| 3 | 1 | BBGS1821 | LIFTING HANLDE |
| 4 | 2 | BBLD-5-1 | FRONT FRAME L-SECTION x 132-7/8" |
| 5 | 4 | BBLD-5-2 | MID FRAME L-SECTION x 93-1/4" |
| 6 | 4 | BBLD-5-5 | REAR BASE FRAME L-SECTION x 56-3/8" |
| 7 | 3 | BBLD-51 | FRAME MEMBER, CTR PIPE x 178-9/16" |
| 8 | 2 | BBLD-55 | FRAME MEMBER, BENT x 46-11/16" |
| 9 | 1 | BBLD-5BCJ | REAR BASE MID FRAME WELDMENT |
| 10 | 2 | BBLD-5DRJ | SIDE FRAME SECTION |
| 11 | 6 | BBLS123 | BBLD-5000 STRUT |
| 12 | 1 | BGLC-K | REAR WHEEL RECEIVER |
| 13 | 1 | BGLC-P | REAR WHEEL JACK BRACKET |
| 14 | 4 | SR5362 | WHEEL PLATE |
| 15 | 4 | SR5363 | BBLD-5000 FRAME PLATE |
| 16 | 3 | RW5008 | 16" x 6 1/2" PNEUMATIC WHEEL & TURF TIRE |
| 17 | 4 | HB5038 | 3/8-16 x 2 1/2 CARRIAGE BOLT GRD 5 |
| 18 | 16 | HB5051 | 1/2"-13 x 3 1/2" CARRIAGE BOLT, ZP |
| 19 | 2 | HB5052 | 1/2"-13 x 1 1/2" CARRIAGE BOLT, ZP |
| 20 | 2 | HB5103 | 3/4"-10 x 10" CARRIAGE BOLT, ZP |
| 21 | 15 | HN261 | 5/16-18 UNC-Nylon Lock Nut-ZP-GrNC |
| 22 | 7 | HN265 | 3/8-16 UNC-Nylon Lock Nut-ZP-GrNC |
| 23 | 18 | HN268 | 1/2-13 UNC-Thin Nylon Lock Nut-ZP-GrNC |
| 24 | 3 | HN5019 | 3/4"-10 STOVER LOCKNUT, ZP |
| 25 | 3 | HS286 | 3/8-16 x 1 HEX CAP SCREW-ZP-GrNC |
| 26 | 15 | HS5015 | 5/16-18 x 2-1/4 HEX CAP SCREW-ZP-GrNC |
| 27 | 1 | HS5389 | 3/4-10 x 9" HEX CAP SCREW-ZP-Gr5 |
| 28 | 60 | HW2044 | 1/2" SAE FLAT WASHER, ZP |
| 29 | 7 | HW2047 | 3/8 SAE WASHER-ZP-GrNC |
| 30 | 19 | HW343 | 3/4 SAE WASHER-ZP-GrNC |
| 31 | 1 | HW5031 | SHIM 1 3/4"IDX2.5ODX.134 THICK |
| 32 | 1 | RP473 | 1 1/2" END CAP |

ASSEMBLY INSTRUCTIONS

- Unpack all parts and check against parts list to ensure that all have been included.
- Select a large clear flat area to assemble the cage.

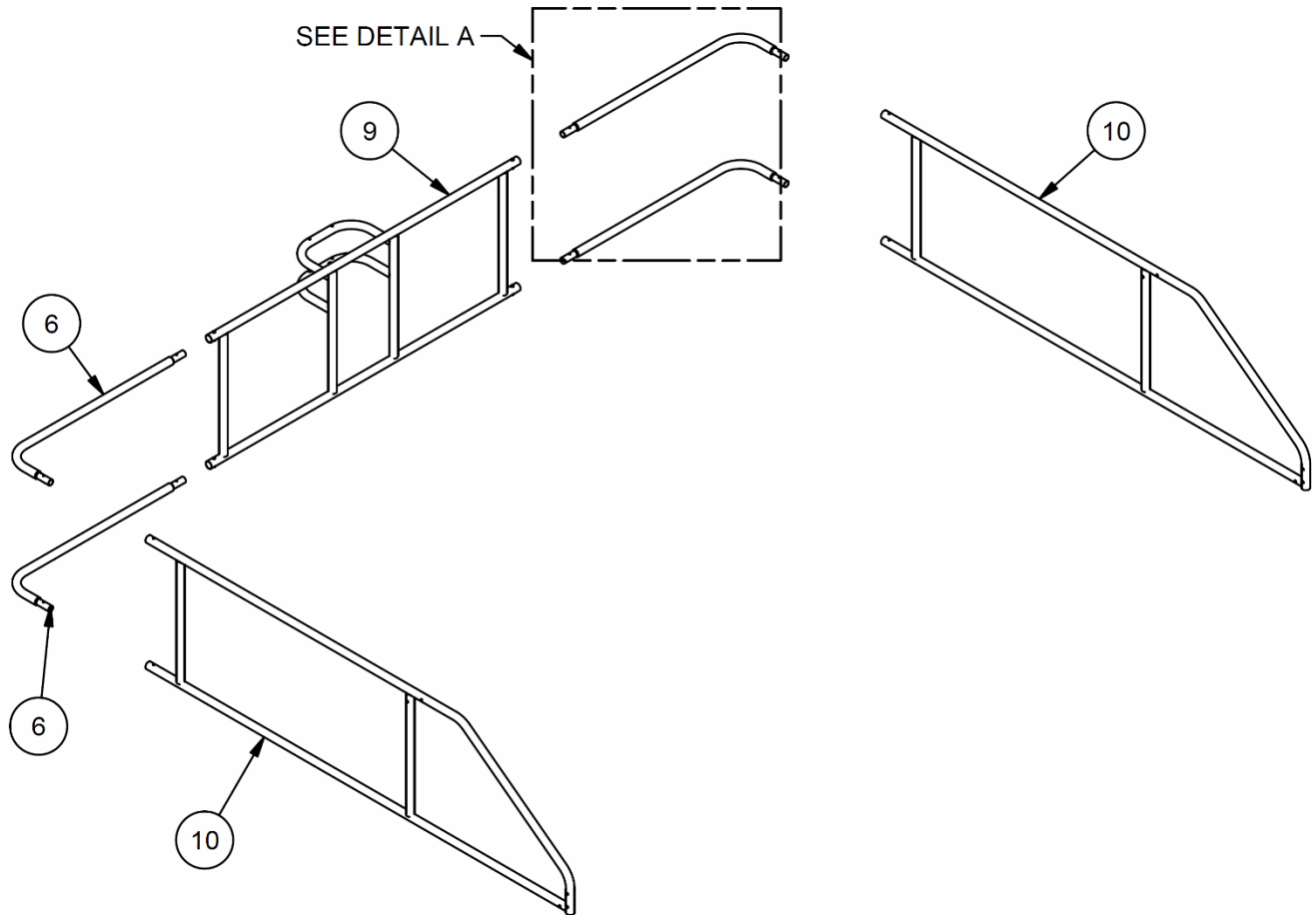
BBLD-5000 QUICK REFERENCE (SEE EXPLODED VIEWS OF DIFFERENT SECTIONS FOR HARDWARE CALLOUTS)



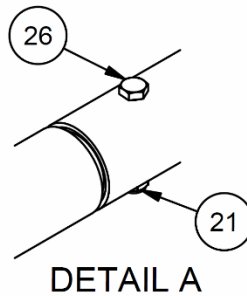
| ITEM | QTY | PART NUMBER | DESCRIPTION |
|------|-----|----------------|-------------------------------------|
| 4 | 2 | BBLD-5-1 | FRONT FRAME L-SECTION x 132-7/8" |
| 5 | 4 | BBLD-5-2 | MID FRAME L-SECTION x 93-1/4" |
| 6 | 4 | BBLD-5-5 | REAR BASE FRAME L-SECTION x 56-3/8" |
| 7 | 3 | BBLD-51 | FRAME MEMBER, CTR PIPE x 178-9/16" |
| 8 | 2 | BBLD-55 | FRAME MEMBER, BENT x 46-11/16" |
| 9 | 1 | BBLD-5BCJ | REAR BASE MID FRAME WELDMENT |
| 10 | 2 | BBLD-5DRJ | SIDE FRAME SECTION |
| 11 | 6 | BBL5123 | BBLD-5000 STRUT |
| 15 | 4 | SR5363 | BBLD-5000 FRAME PLATE |
| 16 | 3 | RW5008 | WHEEL 16" PNEUMATIC |

Assemble Lower Frame:

| ITEM | QTY | PART NUMBER | DESCRIPTION |
|------|-----|-------------|-------------------------------------|
| 6 | 4 | BBLD-5-5 | REAR BASE FRAME L-SECTION x 56-3/8" |
| 9 | 1 | BBLD-5BCJ | REAR BASE MID FRAME WELDMENT |
| 10 | 2 | BBLD-5DRJ | SIDE FRAME SECTION |

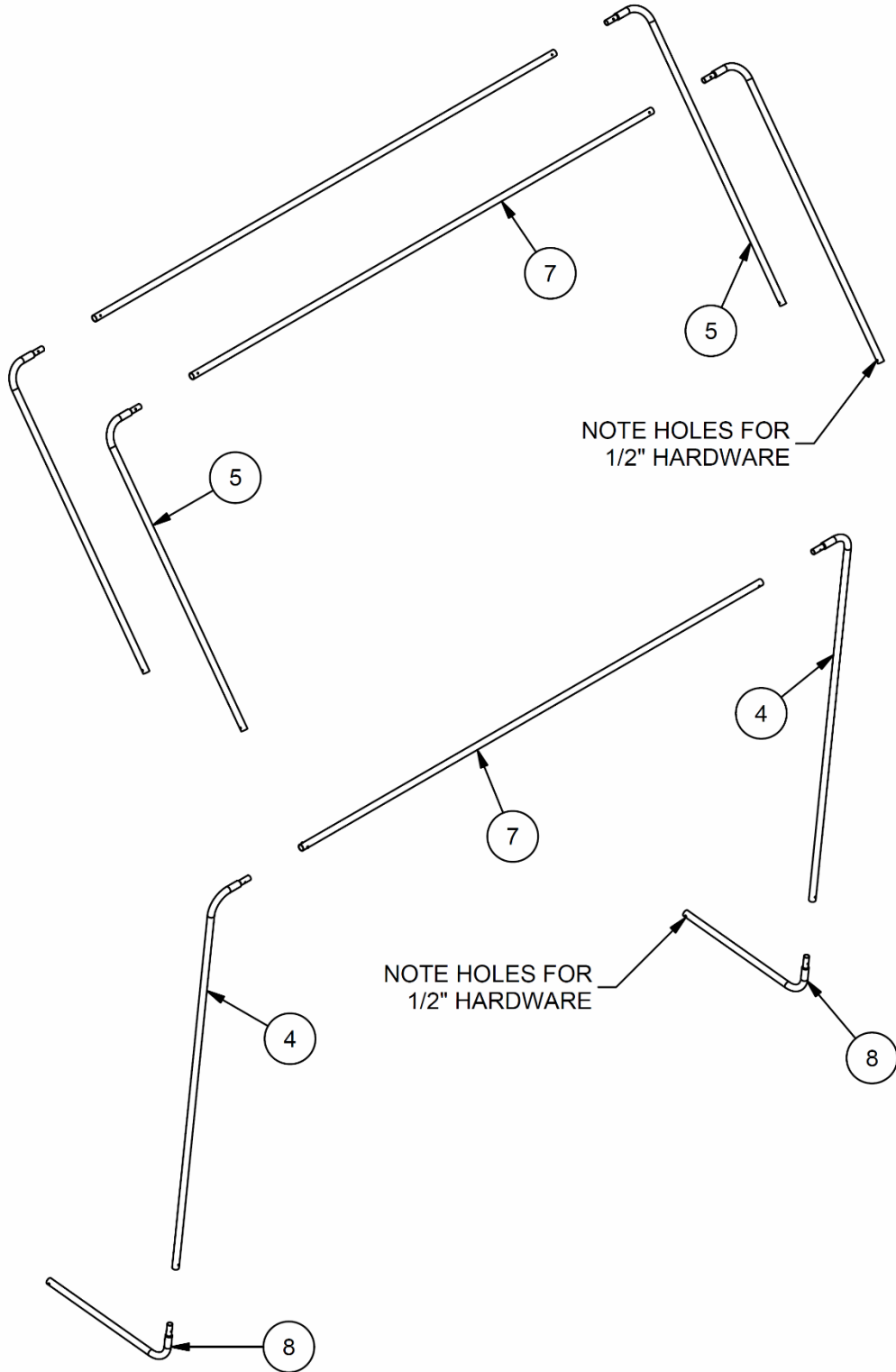


| ITEM | QTY | PART NUMBER | DESCRIPTION |
|------|-----|-------------|---------------------------------------|
| 21 | 15 | HN261 | 5/16-18 UNC-Nylon Lock Nut-ZP-GrNC |
| 26 | 15 | HS5015 | 5/16-18 x 2-1/4 HEX CAP SCREW-ZP-GrNC |

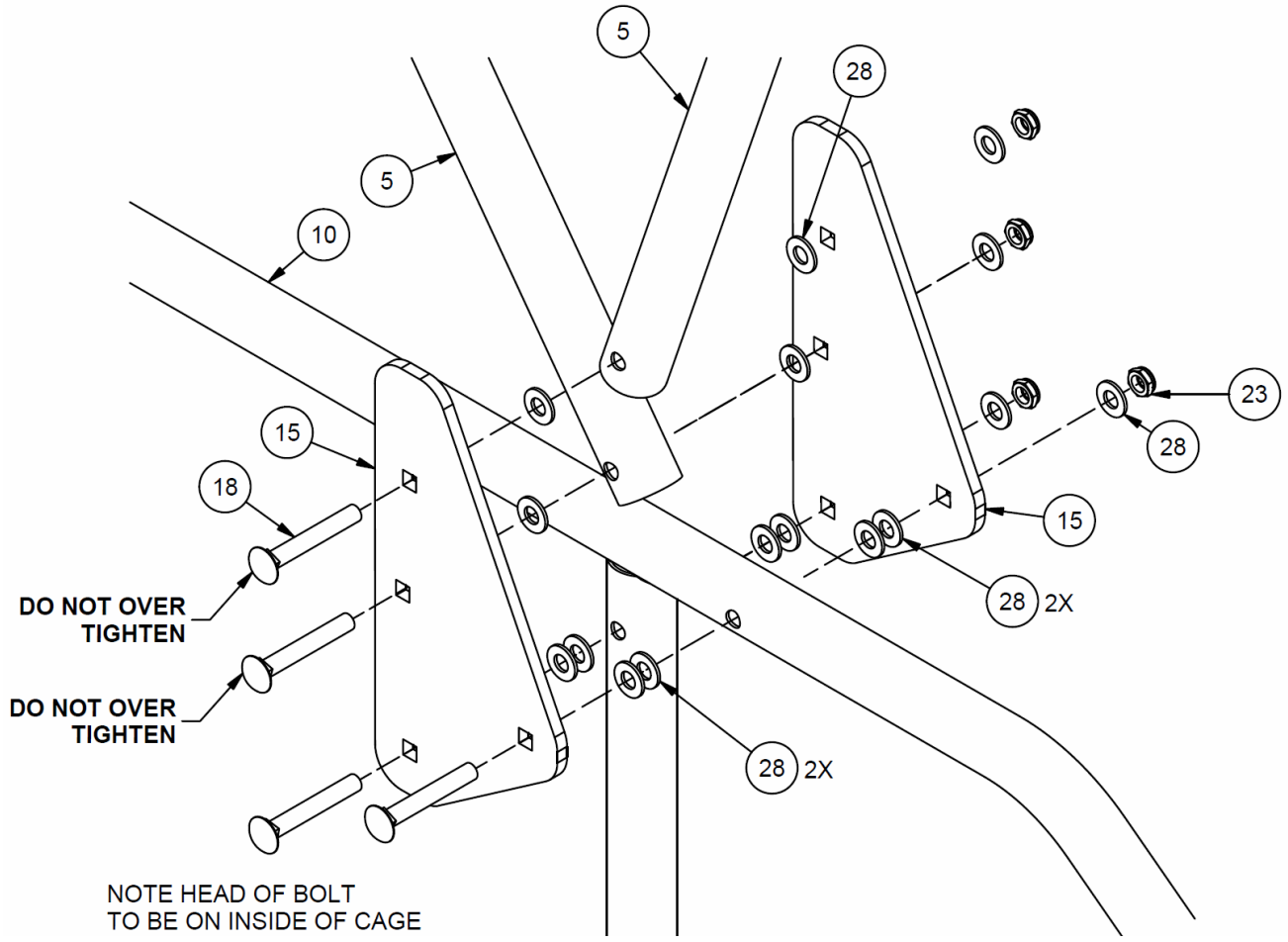


Build and Install Upper Frame Sections:

| ITEM | QTY | PART NUMBER | DESCRIPTION |
|------|-----|-------------|------------------------------------|
| 4 | 2 | BBLD-5-1 | FRONT FRAME L-SECTION x 132-7/8" |
| 5 | 4 | BBLD-5-2 | MID FRAME L-SECTION x 93-1/4" |
| 7 | 3 | BBLD-51 | FRAME MEMBER, CTR PIPE x 178-9/16" |
| 8 | 2 | BBLD-55 | FRAME MEMBER, BENT x 46-11/16" |



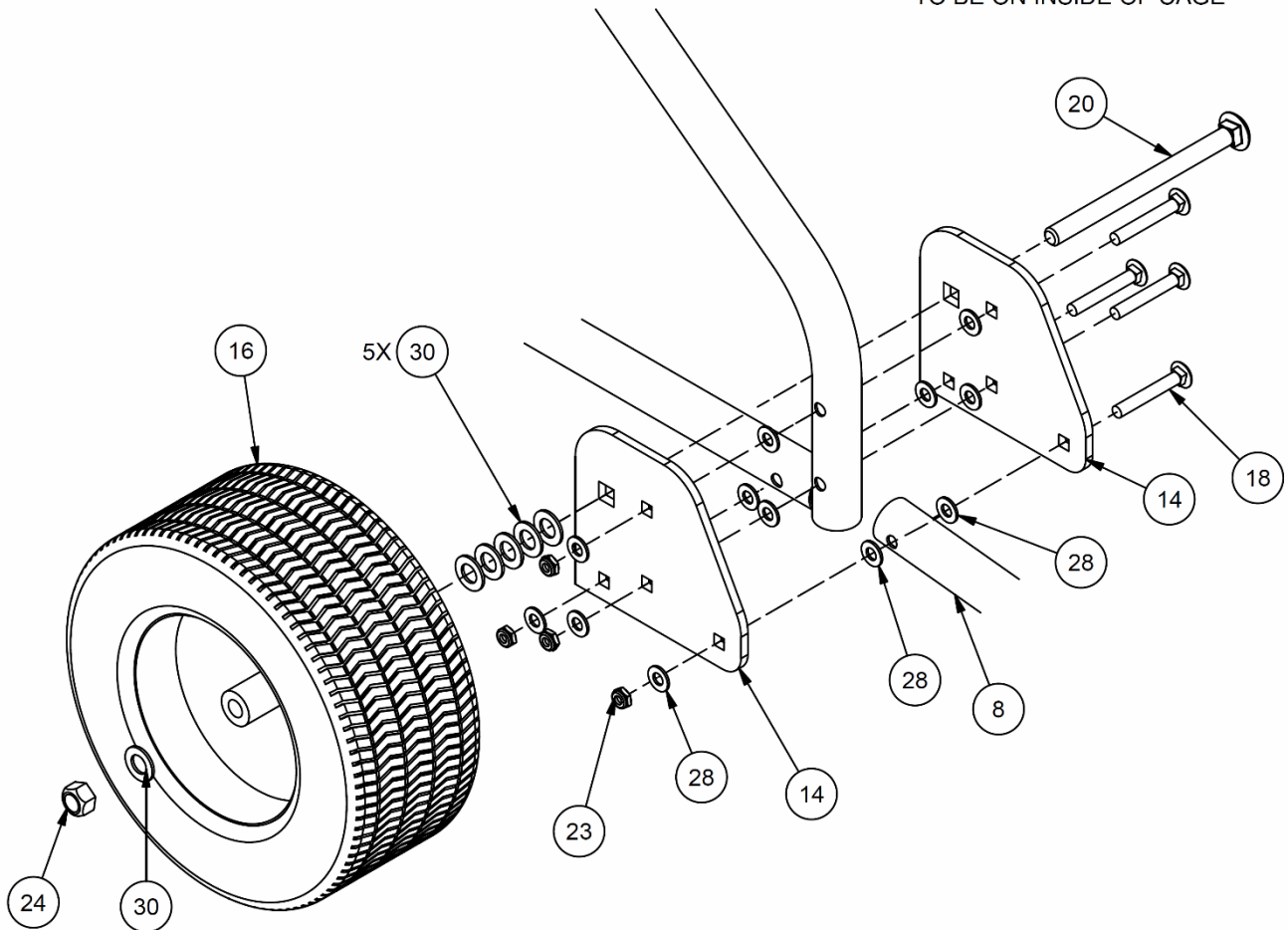
| ITEM | QTY | PART NUMBER | DESCRIPTION |
|------|-----|-------------|--|
| 5 | 4 | BBLD-5-2 | MID FRAME L-SECTION x 93-1/4" |
| 10 | 2 | BBLD-5DRJ | SIDE FRAME SECTION |
| 15 | 4 | SR5363 | BBLD-5000 FRAME PLATE |
| 18 | 16 | HB5051 | 1/2"-13 x 3 1/2" CARRIAGE BOLT, ZP |
| 23 | 18 | HN268 | 1/2-13 UNC-Thin Nylon Lock Nut-ZP-GrNC |
| 28 | 60 | HW2044 | 1/2 SAE WASHER-ZP-GrNC |



Assemble Front Wheel Assembly:

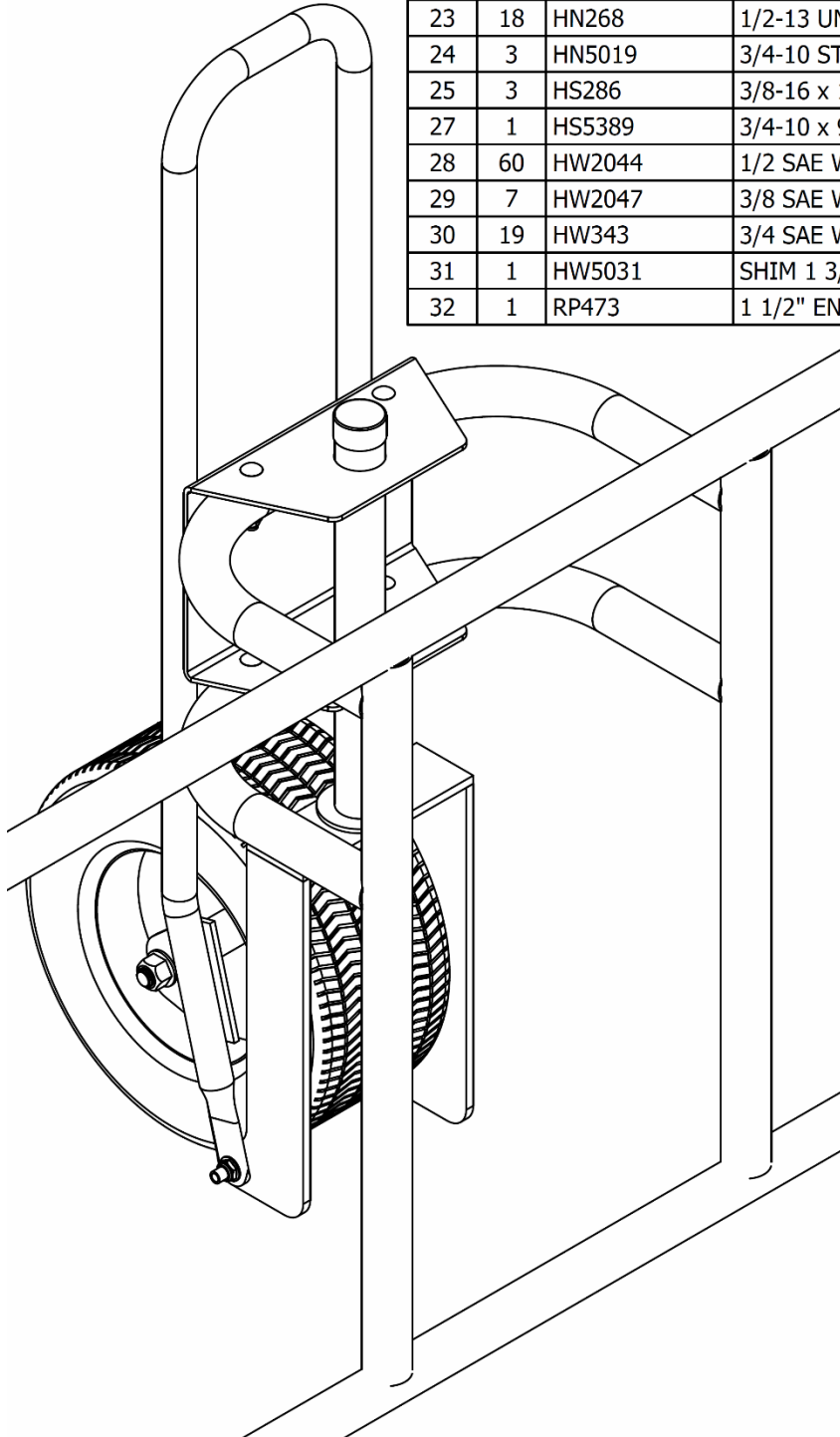
| ITEM | QTY | PART NUMBER | DESCRIPTION |
|------|-----|-------------|--|
| 8 | 2 | BBLD-55 | FRAME MEMBER, BENT x 46-11/16" |
| 14 | 4 | SR5362 | WHEEL PLATE |
| 16 | 3 | RW5008 | WHEEL 16" PNEUMATIC |
| 18 | 16 | HB5051 | 1/2"-13 x 3 1/2" CARRIAGE BOLT, ZP |
| 20 | 2 | HB5103 | 3/4"-10 x 10" CARRIAGE BOLT, ZP |
| 23 | 18 | HN268 | 1/2-13 UNC-Thin Nylon Lock Nut-ZP-GrNC |
| 24 | 3 | HN5019 | 3/4-10 STOVER LOCKNUT ZINC PLATE |
| 28 | 60 | HW2044 | 1/2 SAE WASHER-ZP-GrNC |
| 30 | 19 | HW343 | 3/4 SAE WASHER-ZP-GrNC |

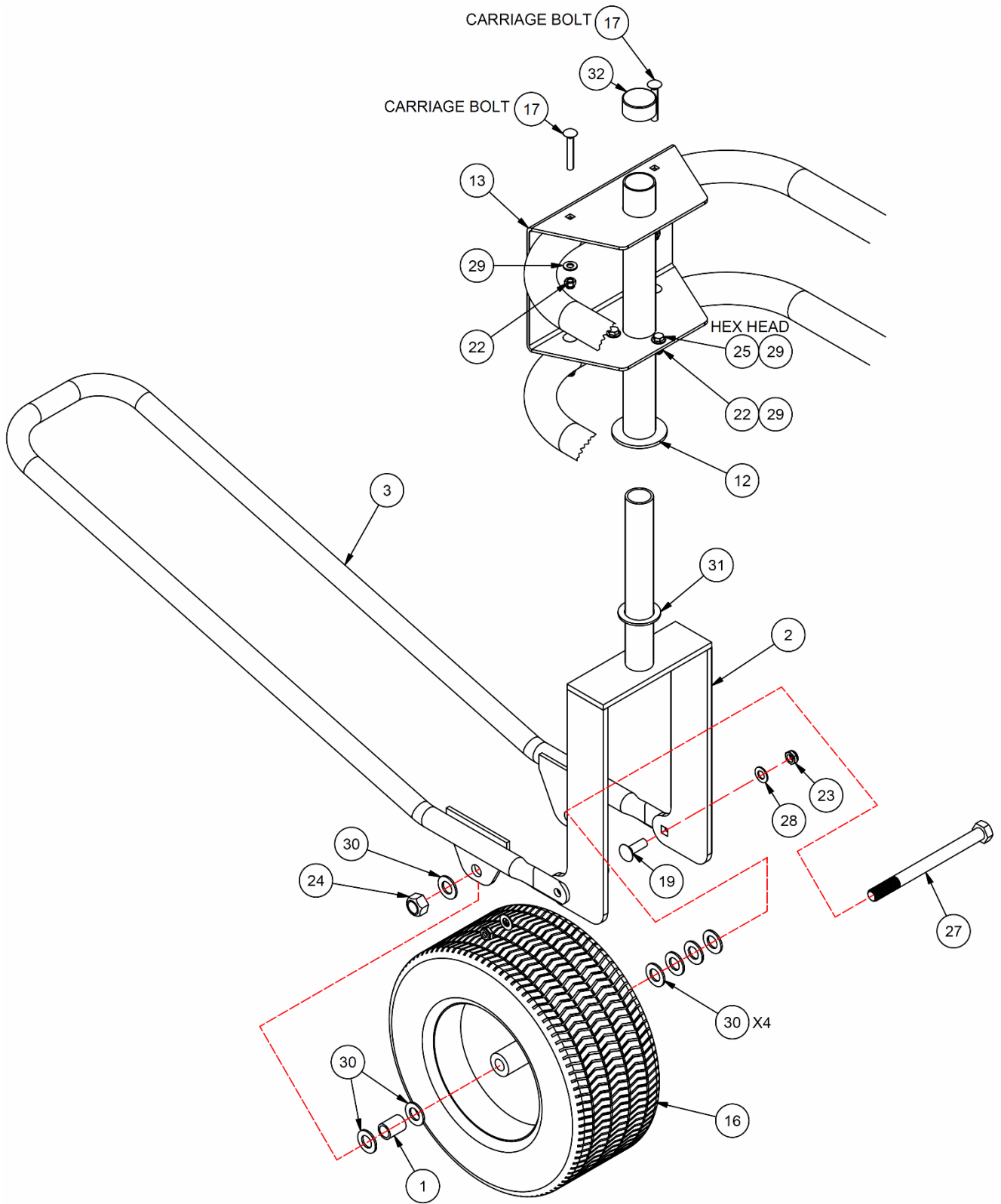
NOTE HEAD OF BOLT
TO BE ON INSIDE OF CAGE



Assemble Rear Wheel Assembly:

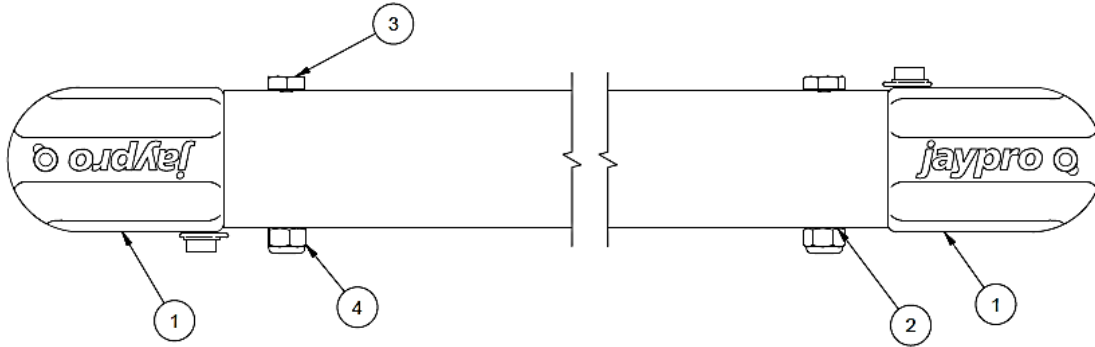
| ITEM | QTY | PART NUMBER | DESCRIPTION |
|------|-----|-------------|--|
| 1 | 1 | BBGS18-3 | 1" OD x 3/4" ID x 1-5/16" LONG SLEEVE |
| 2 | 1 | BBGS1818 | REAR WHEEL ASSEMBLY |
| 3 | 1 | BBGS1821 | LIFTING HANLDE |
| 12 | 1 | BGLC-K | REAR WHEEL RECEIVER |
| 13 | 1 | BGLC-P | REAR WHEEL JACK BRACKET |
| 16 | 3 | RW5008 | WHEEL 16" PNEUMATIC |
| 17 | 4 | HB5038 | 3/8-16 x 2 1/2 CARRIAGE BOLT GRD 5 |
| 19 | 2 | HB5052 | 1/2"-13 x 1 1/2" CARRIAGE BOLT, ZP |
| 22 | 7 | HN265 | 3/8-16 UNC-Nylon Lock Nut-ZP-GrNC |
| 23 | 18 | HN268 | 1/2-13 UNC-Thin Nylon Lock Nut-ZP-GrNC |
| 24 | 3 | HN5019 | 3/4-10 STOVER LOCKNUT ZINC PLATE |
| 25 | 3 | HS286 | 3/8-16 x 1 HEX CAP SCREW-ZP-GrNC |
| 27 | 1 | HS5389 | 3/4-10 x 9" HEX CAP SCREW-ZP-Gr5 |
| 28 | 60 | HW2044 | 1/2 SAE WASHER-ZP-GrNC |
| 29 | 7 | HW2047 | 3/8 SAE WASHER-ZP-GrNC |
| 30 | 19 | HW343 | 3/4 SAE WASHER-ZP-GrNC |
| 31 | 1 | HW5031 | SHIM 1 3/4"IDX2.5ODX.134 THICK |
| 32 | 1 | RP473 | 1 1/2" END CAP |





Assemble struts: (BBL123)

| ITEM | QTY | PART # | DESCRIPTION |
|------|-----|----------|---------------------------------------|
| 1 | 2 | AF5016A | 1.90" CAST STRUT CLAMP |
| 2 | 1 | BBL123-1 | BOLT-ON LITTLE SLAM STRUT |
| 3 | 2 | HS5015 | 5/16-18 x 2-1/4 HEX CAP SCREW-ZP-GrNC |
| 4 | 2 | HN261 | 5/16-18 UNC-Nylon Lock Nut-ZP-GrNC |



After the frame is fully assembled, check all hardware to make sure it is tightened and all joints are secured. Raise the upper frame arches into position using the strut pipes and check for alignment (see setup instructions).

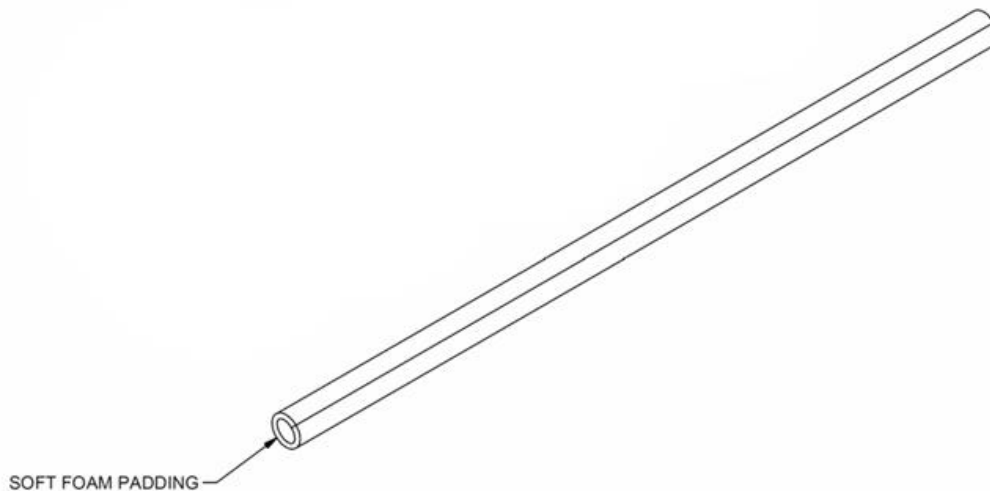
- Before installing the net and padding, wipe frame with a clean rag.

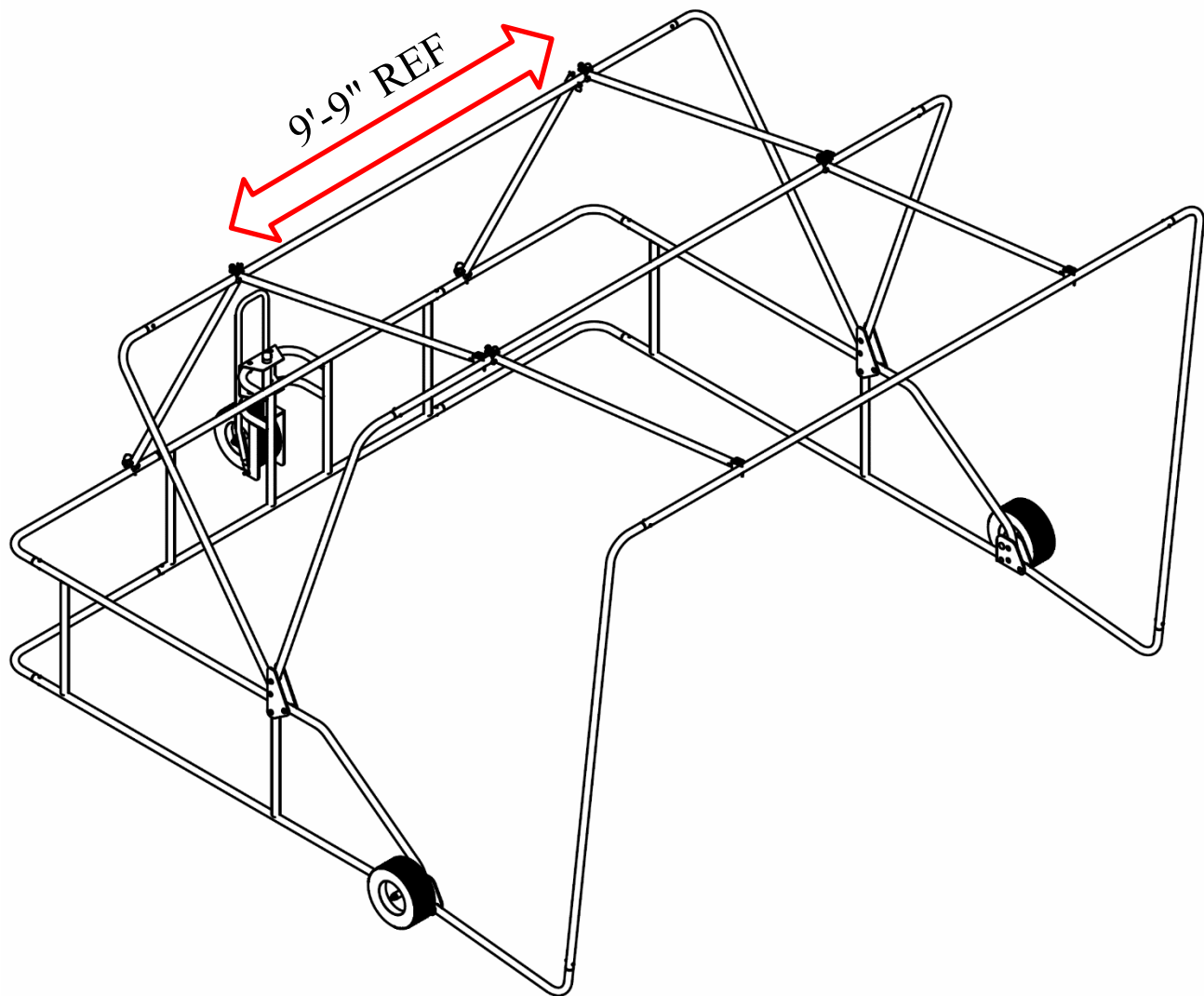
LIST OF MATERIALS (Net and Padding)

| ITEM | QTY | PART # | DESCRIPTION |
|------|-----|--------|----------------------------|
| 1 | 1 | LDN-5 | NET WITH BAFFLE |
| 2 | 50 | RP5096 | CABLE TIES 11" |
| 3 | 300 | CR0016 | 1/8" CORD (FT) |
| 4 | 3 | FM0028 | RICOCHET PADDING |
| 5 | 4 | RP5066 | ADJUSTABLE 6 FOOT STRAP |
| 6 | 1 | SKT-50 | VINYL SKIRT (IF PURCHASED) |

Attach Ricochet Padding:

1. Attach three pieces of ricochet padding to the front frame as shown on the front cover.
2. The pad material is slit along its length. Open the padding up and slide it over the pipe members.



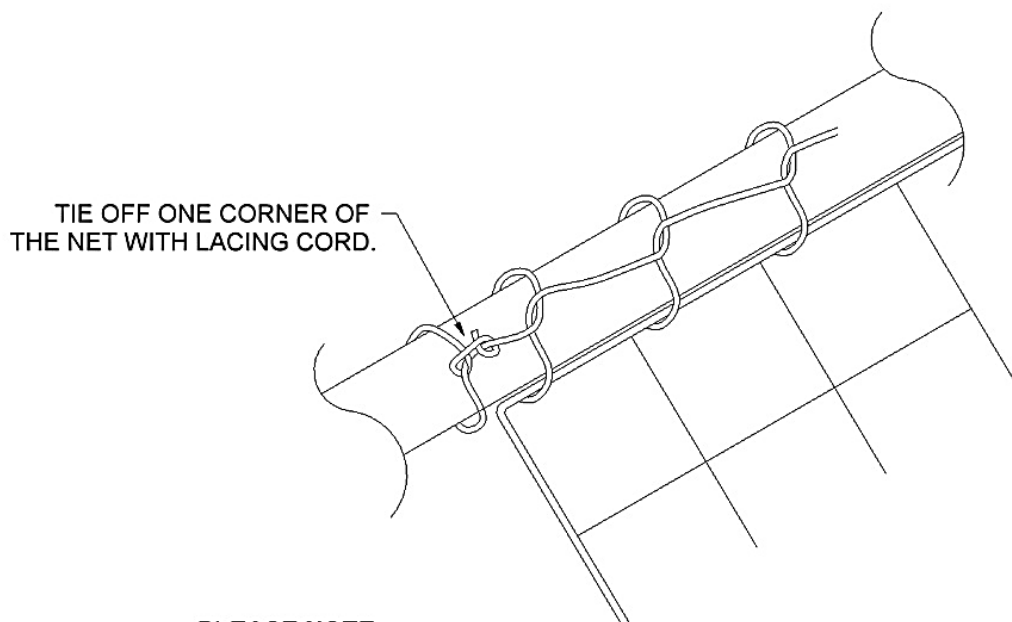


Attach net:

The outer perimeter of the net is to be fully laced to both the front arch and the base of the frame. See detail on next page showing how to lace if unfamiliar with lacing. The net will be suspended from the center two arches by about 6”.

1. Cut a couple dozen 18” long cords from the roll of 1/8” black cord.
2. Remove the net and spread it out in front of the cage.
3. Locate the tags that call out the FRONT CORNERS, FRONT TOP and MIDDLE BACK.
4. With the frame in the folded position, take the section labeled FRONT TOP and position it in the center of the top center crossbar. Tie the net to the crossbar using one of the temporary cords. Tie the leading edge of the net to either side of the frame every couple of feet using additional cord pieces. Continue tying off the net, working towards the front.
5. When done verify that the net is truly centered, and the labels LEFT FRONT CORNER and RIGHT FRONT CORNER are in the proper corners when looking into the cage. If the labels are reversed it means the net is upside down and the baffle will end up on the wrong side (outside) of the cage – reverse the net if needed.
6. Shift the net from side to side as needed to center it.

7. Once the net is properly centered, go back to the TOP FRONT center point and lace the leading edge of net securely to the front arch. Starting from the center, lace to one side and then the other.
8. After the net is fully laced to the front arch – from the rear of the cage, carefully raise the front arch section using two struts (two people required, one strut each side).
9. Locate the next reinforced section of the net (about 8’ back from the front edge) and loosely tie it in place to the 2nd arch using the temporary positioning cords. Again, start at the middle and work to either side, tying off every couple of feet. The net should hang at least 6” away from the tubing to lessen any potential ricochet.
10. Raise the 2nd arch using two struts and repeat step 9 for the third arch. When complete, raise the third arch into position.
11. Starting at the center, tie the net to the top member of the lower frame every couple of feet. Center the net from side to side as needed.
12. Fully lace the bottom edge of the net to the bottom member of the lower frame.
13. Adjust the length and position of the cords on the 2nd and 3rd arches so the net is properly positioned. Securely tie each cord. This can be done using a stepladder with the frame in the raised position or by lowering the frame and adjusting one section at a time.



PLEASE NOTE:

- THE TYPE OF MATERIAL AND SIZE OF THE MESH WILL DETERMINE THE APPROPRIATE LACING DIMENSION.
- ALWAYS LACE CLOSE ENOUGH TO PREVENT THE PLAYING BALL FROM PASSING THROUGH ANY GAPS.
- USE HALF HITCH TYPE KNOTS ALONG THE LENGTH OF YOUR FRAME.
- DRAW EACH KNOT TIGHT BEFORE CONTINUING.



Attach skirt: (IF PURCHASED)

1. Fully raise the upper portion of the cage.
2. Attach the vinyl skirt to the top and bottom pipes of the lower frame using the zip ties.
3. For best results, start at the center and work out to the front corners.
4. Shown below with extra ricochet padding and vinyl padding covers sold separately.



Typical net tied to frame.



Strut pipe clamps (5) to be store in between jack bracket (13).

SET-UP AND TRANSPORT

Raising and Lowering the Upper Cage:

NOTE: At least two people are required for the following steps.

Caution: Keep body parts clear of pinch points between pipes and fittings.

1. Two struts are required to raise and support each arch. The raising of each arch must be done in tandem, with equal force and extension.
2. Attach one end of two struts to the top front frame horizontal pipe, secure in place with a quick release pin or locking claw. Space these apart so that one of the struts is attached at each end of the horizontal frame pipe.
3. Push up and forward on each of the struts attached in the previous step; the front section of the frame should be moving easily and without binding while raising the struts.
Caution: Watch for any binding of the frame and/or netting while doing this, stop immediately if anything is caught on frame hardware. Take extreme care while doing these steps to prevent frame and/or net damage.
4. Place the bottom end of the struts onto the next folding frame section and secure them in place with quick release pins.
5. Take two more struts and place them inboard of the previous two struts on the second frame folding section of horizontal pipe. Secure using quick release pins.
6. Push up and forward on each of the struts from the previous step; the front and second sections of the frame should be moving up and forward easily without binding while the raising struts.
7. Repeat for the next frame section.
8. Attach the final two struts and move the entire upper frame into position. The entire front of the cage may now begin to pull forward due to gravity at this point and will come to rest on the ground.
9. Place the bottom clamp onto the top pipe of the lower frame and secure in place with quick release pins. Some effort may be required to seat these last two fittings in place, depending on net tension and the ground formation in your assembly working area.
10. To disassemble or 'fold' unit, reverse above steps. Use caution when lowering the frame sections to avoid injury.

After each use, inspect all fittings, hardware, pipes, and net for integrity and tightness. Any damage or loose hardware may result in unsatisfactory performance or failure. Contact the factory or dealer for replacement parts.

TRANSPORTING CAGE:

The cage can be transported by going forward or backward. Transporting the cage should be done with 2 or 3 people.

Note: Cage should only be transported in the fully folded position. Never move the cage when fully raised.

1. To transport the cage, fully lower the upper frame, gather the net, and secure it to the rear frame using the adjustable 6-foot strap (RP5066).
2. Raise the rear of the cage by lowering the rear wheel lifting handle.

MAINTENANCE INSTRUCTIONS

Conduct a thorough inspection of the cage annually looking for loose bolts and nuts. Due to normal vibration during play, fasteners may work themselves loose. Tighten adequately on a regular basis to prevent injury.

Apply a small amount of lithium grease to any moving parts, especially axles and wheels. If wheels have zirk fittings, you may inject grease into the wheel bearings using a commercially available grease gun.

Inspect the net and padding for wear; contact the factory to arrange for replacements or servicing.

Paint retouching – any commercially available rust-preventive paint is acceptable for touching up chipped paint and areas of rust. Follow the paint manufacturer's suggestions for proper application of paint & primer. (All steel parts provided are either galvanized and/or powder coated for extra protection but priming and painting should be adequate for proper maintenance of equipment after it leaves the factory.)

Storage: Unit can be stored outside, but protection from the elements is recommended. The batting cage is designed with climatized and weather resistant materials but will age over time. Aging is accelerated if exposed to the weather, especially in Northern regions where freezing is expected during winter months. If possible, as part of seasonal storage, store indoors (net can be removed if desired to extend the life of this item; see catalog or call number listed above if replacement net is needed).

For replacement parts, information, or questions, please call Jaypro Sports at 1-800-243-0533 or find us online at www.jaypro.com